

C O Z Y **N** S A F E[®]
Without Compromise...

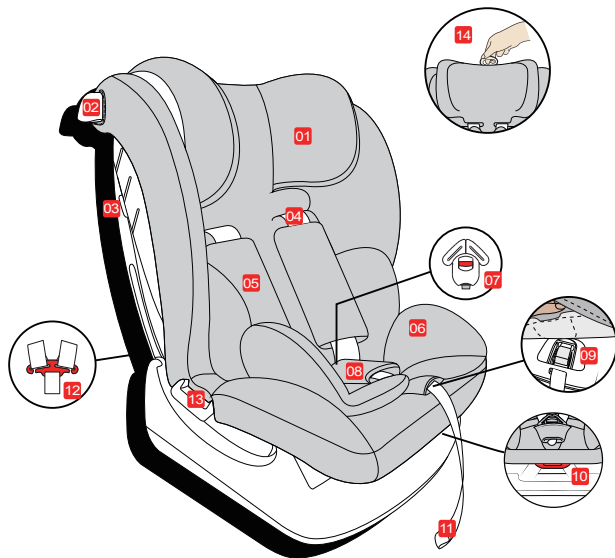


EST-913
FITZROY i-Size
Instruction Manual

Height:40-135cm (Please read this Instruction Manual carefully before use)

CONTENTS

01	PRODUCT OVERVIEW -----	01-02
02	SAFETY WARNING -----	03
03	USAGE	
3.1	Installation position of the car seat in vehicle-----	04
3.2	Adjusting the headrest-----	05
3.3	Checking the shoulder strap height-----	05
3.4	Using the buckle-----	06
3.5	Adjusting the length of the harness-----	06
3.6	Reclining the seat-----	07
3.7	Removing the harness-----	08
3.8	Removing the chest pads-----	08
3.9	Remove the crotch pad and buckle-----	09
3.10	Adjusting the height of the harness-----	09
04	INSTALLATION	
4.1	Installed rearward-facing (Height:40-105CM)-----	10-12
4.2	Installed forward-facing (Height:100-135CM)-----	13
05	MAINTENANCE AND CLEANING -----	14
5.1	Daily maintenance	
5.2	Washing instructions	
5.3	Remove and assemble the fabric cover	



- 01 Headrest
- 02 Belt guide hook
- 03 Belt clamp
- 04 5-point harness
- 05 Chest pad
- 06 Insert
- 07 Buckle
- 08 Crotch pad
- 09 Harness adjustment button
- 10 Recline adjuster
- 11 Harness adjuster strap
- 12 Harness connector
- 13 Belt guide
- 14 Headrest adjuster

“UNIVERSAL BELTED” NOTICE

- This is a Universal Belted Enhanced Child Restraint System. It is approved according to UN Regulation No.129, for use primarily in "Universal seating positions" as indicated by vehicle manufacturers in the vehicle user's manual.
- If in doubt, consult either the Enhanced Child Restraint System manufacturer or the retailer.

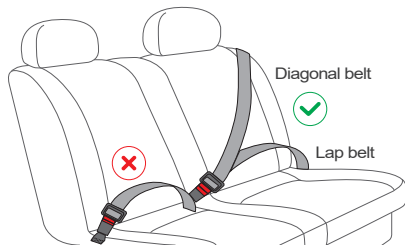
“ I-SIZE BOOSTER SEAT ” NOTICE

- This is a i-Size booster seat Enhanced Child Restraint System. It is approved according to UN Regulation No.129, for use primarily in " i-Size seating positions" as indicated by vehicle manufacturers in the vehicle user's manual.
- If in doubt, consult either the Enhanced Child Restraint System manufacturer or the retailer.

* DO NOT use the device in seating positions with an active frontal airbag.
* Only suitable if the approved vehicles are fitted with 3 point safety-belts,
approved to UN/ECE Regulation No.16 or other equivalent standards.

- This product can be used rearward-facing with the 5-point safety system for children with a height of 40-105cm, using adult three-point belt to fix the child restraint system.
- This product can also be used forward-facing for children with a height of 100-135cm, using the adult three-point belt to fix the child restraint system.
- Do not use any load bearing contact points other than those described in the instructions and marked in the child restraint.
- Please keep for future reference, a storage compartment for the instructions is located on the back of the child seat.
- Do not use this child seat in the home. It has not been designed for home use and should only be used in your car.
- Do not use rearward facing child seat in seating positions where there is an active frontal airbag installed, death or serious injury can occur.
- For the reason of safety, the child seat must be fixed inside the vehicle using adult three-point belt even if you do not put your child inside the child seat.
- The rigid items and plastic parts of a child seat shall be so located and installed that they are not liable, during everyday use of the vehicle to become trapped by a movable seat or in a door of the vehicle.
- Any straps holding the restraint to the vehicle should be tight.
- Any straps restraining the child should be adjusted to the child's body.
- Straps should not be twisted.
- Ensure that any lap strap is worn low down, so that the pelvis is firmly engaged.
- The device should be replaced when it has been subjected to violent stresses in an accident.
- It's dangerous to make any alterations or additions to the device without the approval of the Type Approval Authority, it's also dangerous not to follow closely the installation instructions provided by the manufacturer.
- When the seat is not provided with a textile cover, the seat should be kept away from sunlight, otherwise it may be too hot for the child's skin.
- Don't leave your child in the car seat unattended.
- Any luggage or other objects liable to cause injuries in the event of a collision should be properly secured.
- The car seat shall not be used without the cover. The seat cover should not be replaced with any, other than the one recommended by the manufacturer, because the cover constitutes as an integral part of the restraint performance.
- The instructions shall be retained on the device for its life period or in the vehicle handbook.
- The user shall also be referred to the vehicle manufacturer's handbook.
- Never use a second-hand product, as you can never be certain what was happened to it.

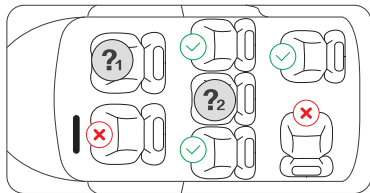
3.1 Installation position of the child seat in vehicle



✓ Suitable

✗ Not suitable

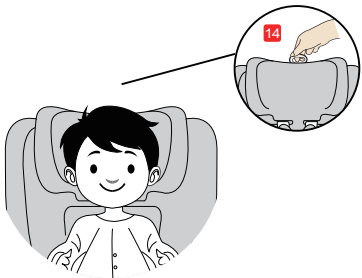
Only suitable if the approved vehicles are fitted with a 3 point safety-belt, approved to UN/ECE Regulation No.16 or other equivalent standards.



?₁ Not to be used in seating positions where an active frontal airbag is installed.

?₂ Only use on this seat if a lap and diagonal seat belt is fitted.

3.2 Adjusting the headrest



- As shown in the picture, you can adjust the headrest up and down by pulling on the headrest adjuster **14** and adjust the headrest to a position suitable for the child's head.

3.3 Checking the shoulder strap height



 too low



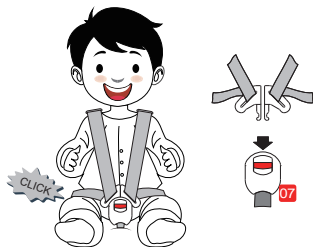
 too high



 slightly higher

- Always check that the shoulder straps are at the correct height for your child. The child's shoulder straps should always be threaded through the slots in the cover and seat shell so they are level or slightly above your child's shoulders.

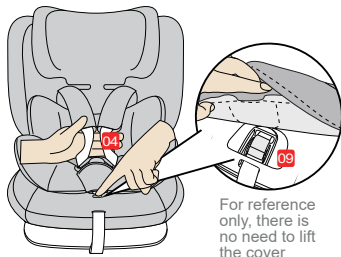
3.4 Using the buckle



- Assemble the left and the right pieces of the buckle together.
- Insert the two pieces into the slot of the buckle. When the buckle is correctly engaged you will hear a “click”. Always double check the buckle is locked by pulling the harness.

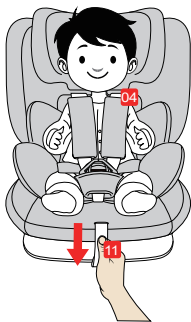
*** If you want to release the harness, press the red button down on the buckle.**

3.5 Adjusting the length of the harness



- To loosen the harness **04** locate the adjuster **09** on the front of the seat (marked press on the cover). Press down the adjuster as you grip the two shoulder straps with your other hand. Pull the harness towards you while pressing the adjuster to loosen the harness.

*** Always pull the harness from under the chest pads, never pull the chest pads themselves.**

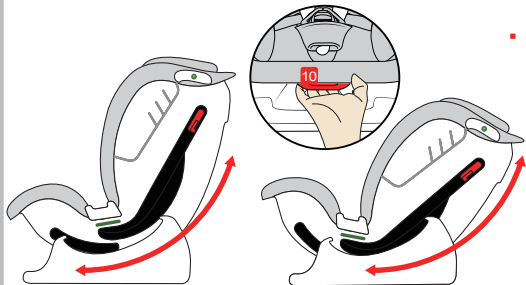


- To tighten the harness **04** pull the harness adjuster strap **11** away from the car seat. You may need to guide the harness into place using your other hand.

* The harness should be adjusted as tightly as possible without causing discomfort to your child. A loose harness can be dangerous.

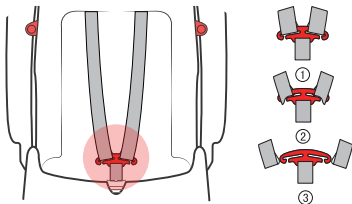
* Always check the harness is tight each and every time you place your child in the car seat.

3.6 Reclining the seat



- To recline the seat pull the recline adjuster **10** and position the seat to your required recline angle. The car seat has 3 x forward facing recline positions and 1 x 145° rear facing recline position.

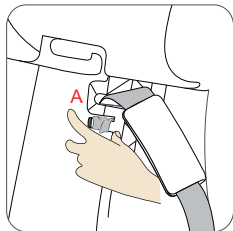
3.7 Removing the harness



- Loosen the harness turn the child seat so you can see the back. Slide the harness off the harness connectors. (As shown in figure ①②③).

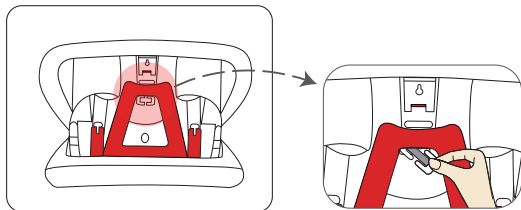
You can then remove the buckle tongues from the harness and then hide the harness under the covers converting your car seat to a high backed booster.

3.8 Removing the chest pads



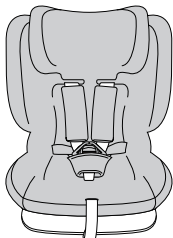
- Loosen the cloth cover inside the seat and adjust the headrest to the highest position (see page 5, 3.2 of the manual). Remove the chest strap from the hook and pull out the chest pad. Repeat for the other side.

3.9 Remove the crotch pad and buckle



- Adjust the child seat to the most reclined position and turn it so you can see the bottom. Turn the buckle locking clip on their narrowest position and feed it through the slot under the bottom of the child seat. The crotch pad and buckle can now be removed.

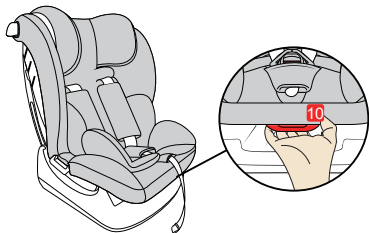
3.10 Adjusting harness height



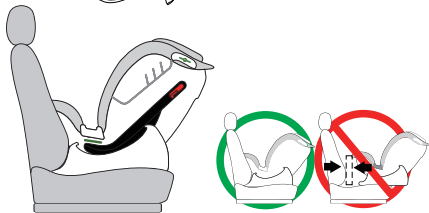
- The car seat 5-point harness will automatically adjust along with the headrest. Always check that the shoulder straps are at the correct height for your child. The child's shoulder straps should always be threaded through the slots in the cover and seat shell so they are level or slightly above your child's shoulders.

4.1 Installed rearward facing (Height:40-105CM)

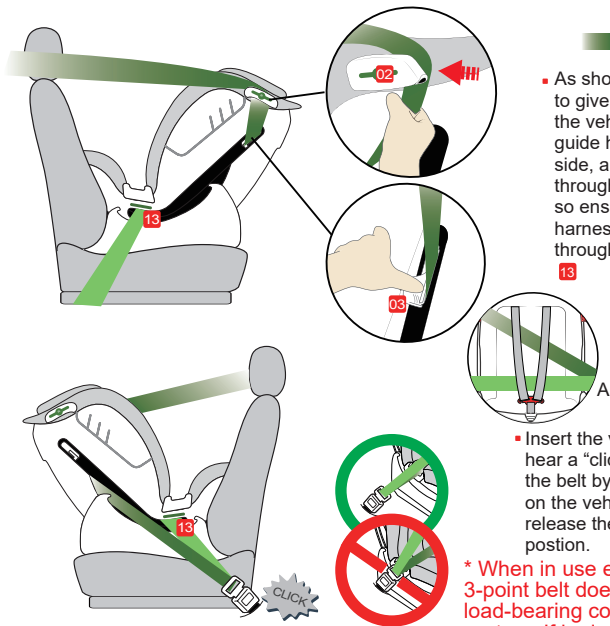
* Do not use forward facing before the child's age exceeds 15 months.



- Method: Pull the recline adjuster **10** under the seat, adjust to the most reclined position.



- Put the child seat rearward facing on the car seat and make sure that the front of the child seat is firmly pressed against the vehicle seat backrest.

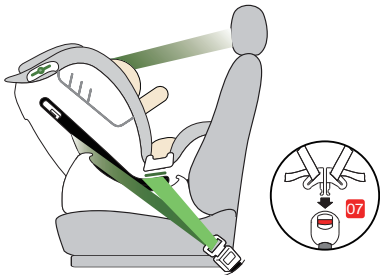


■ Shoulder belt ■ Lap belt

- As shown in the figure, firstly pull the vehicle belt to give yourself as much slack as possible, feed the vehicle shoulder belt into the car seat belt guide hook **02** and belt clamp **03** on the same side, and then continue to pass the vehicle belt through to the other side of the seat (when doing so ensure the vehicle belt goes behind the harness Figure A). Ensure that the lap belt goes through the belt guide on the base of the seat **13**

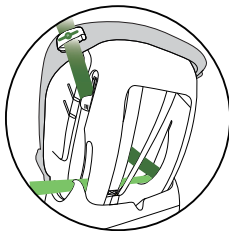
- Insert the vehicle seat belt into the buckle until you hear a “click” sound. Then remove any slack from the belt by releasing the belt clamp **03** and pulling on the vehicle belt as hard as you can. Then release the belt clamp to lock the vehicle belt in position.

* When in use ensure that the buckle of the adult 3-point belt does not interfere with the main load-bearing contact point of the child restraint system. If in doubt, please contact the manufacturer of the child restraint system.



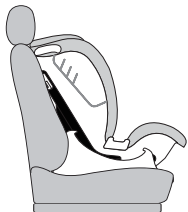
- Put your child into child seat.
- * Check the height of the harness is in the correct position and fasten the buckle **07**.
- * Check that the harness has not been twisted.
- * Check that the cover is not impeding the movement or fit of the harness in anyway.

IMPORTANT:
Ensure there are no twists in the vehicle belt.
The 3-point vehicle belt passes through the backrest as shown in the picture:



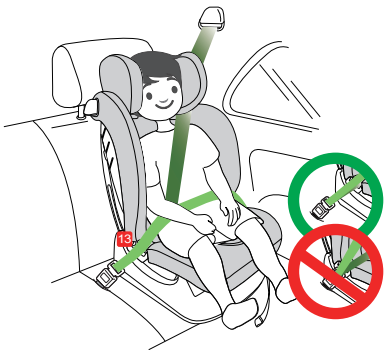
4.2 Installed forward-facing (Height:100-135CM)

* Do not use the device in seating positions where an active frontal airbag installed.



- Put the child seat forward facing on the vehicle seat and make sure that the back of the child seat is firmly pressed against the vehicle seat backrest.

■ Shoulder belt ■ Lap belt



- Place the child in the car seat and adjust the height of the headrest. Make sure that the bottom of the headrest is at the height of the child's shoulder and is locked in place.
- Pull out the vehicle belt, the shoulder strap must pass through the headrest belt guide, and then pass through the belt slot **13** together with the lap belt, insert it into the buckle until you hear a "click". Ensure the lap belt goes through the belt guide on both sides of the seat.
- * Make sure the vehicle belt is not slack or twisted.
- * When in use ensure that the buckle of the adult 3-point belt does not interfere with the main load-bearing contact point of the child restraint system. If in doubt, please contact the manufacturer of the child restraint system.

5.1 Daily maintenance

- In daily use, periodically check the child seat. The child seat should be replaced after an accident.
- Please keep this child seat in a dry and ventilated place to avoid damp and mold.
- If the child seat becomes dirty, clean the harness and the plastic pieces by wiping them with a damp sponge and let it dry naturally.
- If food or drink accidentally drops on to the buckle, disassemble the buckle from the child seat and rinse it gently with warm water. Leave it dry naturally .
- For cleaning the entire child seat fabric cover, please refer to the 5.2 washing instructions.

5.2 Washing instructions

- Never use any solvent, chemical detergent or lubricant on any part of your child seat.



5.3 Remove and assemble the fabric cover

- Firstly, remove the crotch pad and buckle from the child seat and then remove the harness, chest pads and insert.
- Remove the fabric cover of the child seat.
- * To install the fabric cover, please operate follow the above instructions in reverse order.

CHILD INFORMATION
(KEEP WITH CAR SEAT AT ALL TIMES IN CASE OF EMERGENCY)

C O Z Y  S A F E[®]

NAME:

.....

DATE OF BIRTH (DD/MM/YYYY):

.....

ADDRESS:

.....

.....

.....

ALLERGIES/MEDICAL CONDITIONS:

.....

.....

.....

EMERGENCY CONTACT 1:

NAME:

.....

PHONE NUMBER:

.....

EMERGENCY CONTACT 2:

NAME:

.....

PHONE NUMBER:

.....

Cozy N Safe
136 Oxford Street, Wolverhampton, West Midlands,
WV14 7DP, UK
Tel: +44 (0) 1902 494905
Email: enq@cozynsafe.com