

CHILD INFORMATION
(KEEP WITH CAR SEAT AT ALL TIMES IN CASE OF EMERGENCY)
NAME:

.....

DATE OF BIRTH (DD/MM/YYYY):

.....

ADDRESS:

.....
.....
.....

ALLERGIES/MEDICAL CONDITIONS:

.....
.....
.....

EMERGENCY CONTACT 1:

NAME:

.....

PHONE NUMBER:

.....

EMERGENCY CONTACT 2:

NAME:

.....

PHONE NUMBER:

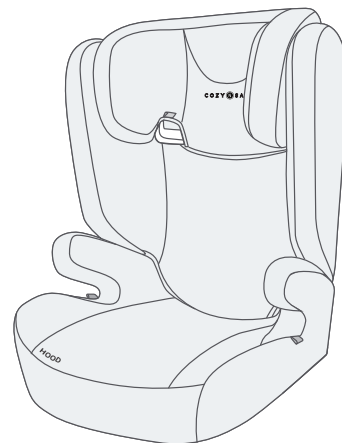
.....

www.cozynsafe.com

Cozy N Safe
Oxford Street, Wolverhampton, West Midlands, WV14 7DP, UK
Tel: +44 (0) 1902 494905 | Email: enq@cozynsafe.com

ORIGINAL

HOOD i-Size



With backrest,
i-Size booster seat: 100-150cm;
Without backrest,
Universal booster cushion: 135cm-150cm



Safety information

This safety manual and the separate operating manual are components of the product and contribute to its safe use. Non-Compliance may lead to serious or even fatal injuries. If in doubt, do not use product and immediately contact your retailer.

- Read the operating manual and safety manual.
- Keep with the product for reference.
- If the product is given to third parties, include the operating instructions with the product.

Risk of injury from damaged child seat

In the event of an accident at a collision speed of more than 10 km/h, the child seat may be damaged without the damage being immediately visible. Serious injuries may result from another accident.

- Replace product following an accident.
- Have damaged product inspected (even if it has fallen onto the ground).
- Regularly check all important parts for damage.
- Ensure that all mechanical components work properly.
- Never lubricate or oil parts of the product.
- Properly dispose of the damaged product.

Risk of burns from hot components

Components of the product can become hot in direct sunlight. Children's skin is sensitive and maybe harmed as a result.

- Protect the product against intensive direct sunlight when not in use.

Risk of crushing from moving backrest

When straightening the backrest, fingers may be crushed between the backrest and the seat cushion.

- Keep fingers out.

Avoid damaging the product

- Never use product in a free-standing position, even for testing.
- Product is not a toy.
- Ensure that the child seat is not trapped between hard objects (vehicle door, seat rails, etc.).
- Store child seat in a safe place when not in use.
- Keep product away from: Damp, moisture, liquids, dust and salt spray.
- Do not lean heavy objects on the child seat.
- Do not store child seat directly next to sources of heat or in direct sunlight.

Secure product in the vehicle

Risk of injury if installed incorrectly

If the product is uninstalled or used other than as described in the operating instructions, serious or even fatal injuries may result.

- Never secure the child seat with a 2-point seat belt.
- Only use on vehicle seats facing or against the direction of travel.
- Note and follow the instructions in the vehicle handbook.

Risk of injury due to missing contact surface

It is necessary for the backrest of the child seat to be flat to the vehicle seat. If the headrest of the vehicle seat prevents this, then carry out the following steps.

- Check whether the vehicle handbook allows the headrest to be removed.
- If this is allowed, then remove the headrest according to the vehicle handbook. Immediately reattach the headrest as soon as the child seat is no longer used on the vehicle seat.
- If it is prohibited, select a different vehicle seat.

How to avoid damaging the vehicle

- The vehicle's sensitive seat covers may be damaged.
- Use the vehicle seat protectors. These are available separately.

Risk of injury due to over-long belt lock

The position of the belt lock affects the protective function of the child seat.

- Select a different vehicle seat if the seat belt lock is in or in front of the dark-green belt guide.
- If in doubt contact your retailer.

Use in the vehicle

Risk of injury during use

The temperature in a vehicle can rise to dangerous levels quickly. In addition, it is dangerous to step out of the vehicle from the side facing the street.

- Never leave a child unsupervised in the vehicle.
- Only allow the child to board and disembark on the footpath-side.
- On long journeys, take regular breaks in order to give your child chance to move and play.

Risk of injury from slack straps

Slack straps are areas of the seat belt that lie loosely against the child's body.

Slack straps have a negative impact on the protective function.

- Check straps are tight and not twisted.
- Avoid thick clothing under the belt.
- Ensure that any lap strap is worn low down, and that any impact shield installed properly, so that the pelvis is firmly engaged, shall be stressed.
- Never leave your child unattended in the child restraint system in the vehicle.

Risk of injury from unsecured objects

In the case of an emergency stop or accident, unsecured objects or people may cause injury to other occupants in the vehicle.

- Never secure your child by holding them tightly on your lap.
- Secure the backrests of the vehicle seats find (e.g. engage foldable rear bench seat).
- Secure all heavy or sharp- edged objects in the vehicle (e.g. on the parcel shelf).
- Do not place objects in the foot well.
- Ensure that everyone in the vehicle has their seatbelts fastened.
- Ensure that the product is always secured when it is in the vehicle, even if no child is being transported.

Risk of injury from unsecured child

If the child causes the vehicle seat belt lock to open , in the event of an emergency stop or an accident there is a risk of serious or even fatal injuries.

- Stop the vehicle safely as soon as this is possible.
- Ensure that the child seat is correctly fastened.
- Ensure that the child is buckled up correctly.
- Explain the consequences and dangers to the child.

Cleaning and care

Never use child seat without seat cover

The seat cover is an integral safety component of the child seat. If the seat cover is not used, this may lead to serious or even fatal injuries.

- Only use original replacement seat covers.
- Replacement seat covers are available from your retailer.



WARNING!

This operating manual and the separate are components of the product and contribute to its safe use. Noncompliance may lead to serious or even fatal injuries. If in doubt, do not use product and immediately contact your retailer.

Intended use

This product has been designed, tested and certified according to the requirements of the European Standard for Child Safety Equipment UN ECE R129/03.

Height of child: 100 cm – 150 cm

This product is designed exclusively for securing a child in a vehicle.

This approval is invalidated if you make any modifications to this product.

Changes may only be made by the manufacturer. The stickers on the product are an important component of the product.

➤Do not make any changes.

➤Do not remove stickers.

Check fastening before each car journey:

- The lap belt sits in the left and right dark green belt guides.
- The lap belt sits as low as possible over the child's hips on both sides.
- The diagonal belt sits in the dark green belt guide on the side of the seat belt lock.
- The diagonal belt sits in the light green belt guide.
- The diagonal belt leads diagonally to the back from the child seat.
- The vehicle seat lock is neither in nor in front of the dark-green belt guide.
- The seat belt is pulled tight and not twisted.

Cleaning and care

➤ Clean plastic parts with soapy water.

➤Do not use abrasive cleaning agents (e.g. solvents).

Disposal

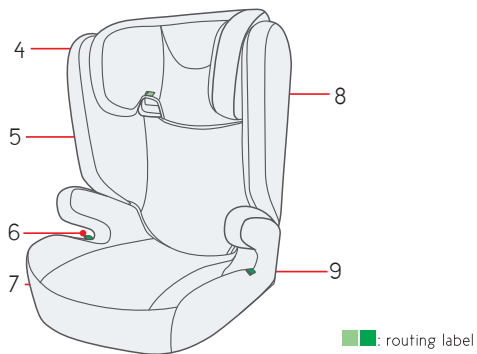
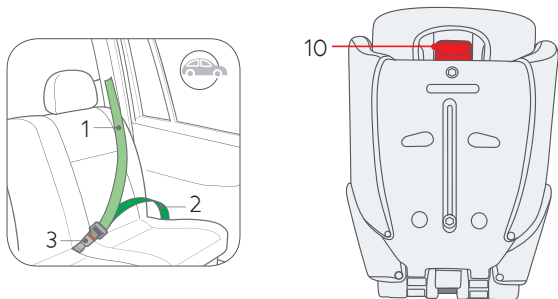
➤ Observe the disposal regulations in your country.

➤Do not dismantle product.

Parts List

1. Diagonal belt
2. Lap belt
3. Seat belt lock
4. Headrest
5. Backrest
6. Safety belt route slot
7. Base
8. Head belt guide
9. Belt slot label
10. Height adjuster

Please make sure there are no missing parts. Please contact the retailer if anything is missing.




Concerns on Installation

see images 1 - 2


1

BELTED




3-point car seat belt

With backrest suitable for the child height 100-150CM

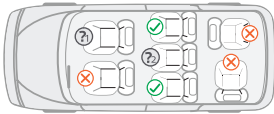






Without backrest suitable for the child height 135-150CM



2

NOTICE

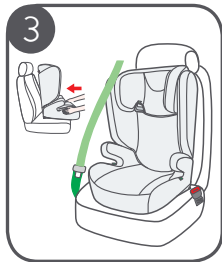


-  You can install this position
-  Unable to install the position
-  When in front of the seat with opened airbag, cannot install in this place.
-  Only with ISOFIX attachments or with the three point safety belt can install in this place.

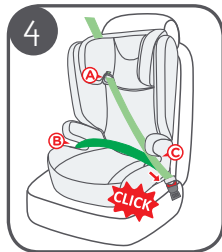
Installation of the seat with backrest 3-point car seat belt installation(100-150CM)

see images 3 - 5

1. Place the baby car seat on the vehicle's seat and pull out the 3-point car seat belt. 3

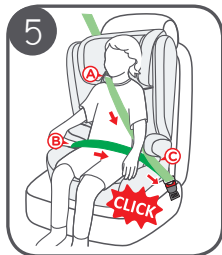


2. Follow the routine to install the baby car seat. 4



! Secure empty child seat before each journey

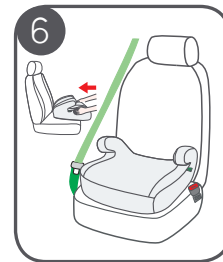
3. Put the child into the safety car seat and then Pull car seat belt follow the belt route and lock. 5



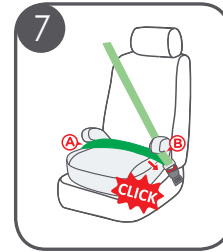
Installation of the seat without backrest 3-point car seat belt installation(135-150CM)

see images 6 - 8

1. Place the baby car seat on the vehicle's seat and pull out the 3-point car seat belt. 6



2. Follow the routine to install the baby car seat. 7



! Secure empty child seat before each journey

3. Put the child into the safety car seat and then Pull car seat belt follow the belt route and lock. 8

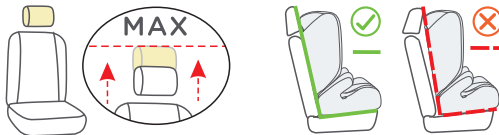


Adjustment

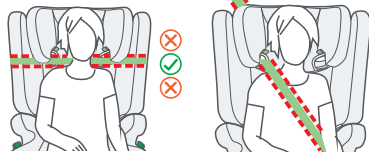
For Head Support and Shoulder Harnesses

Note

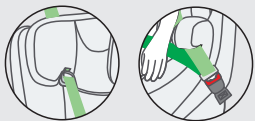
! Adjust the car seat



! Adjust the height of headrest and belt slot to suitable height of child.



! Fasten car seat belt and make sure, it is tight enough.

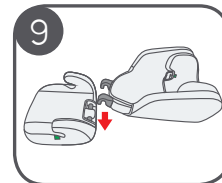


✗ If car seat belt is too long, it is not suitable to tighten baby car seat. When in impact, it will not work. Please check if car seat is suitable before using baby car seat.

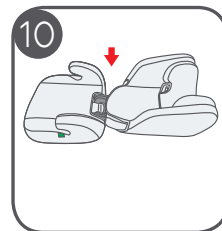
Assembling the seat

see images 9 - 11

1. Align base and backrest in a straight line. 9



2. Place backrest hooks inside base securely. 10



3. Gently keep pressure on hooks as you lift backrest up. 11

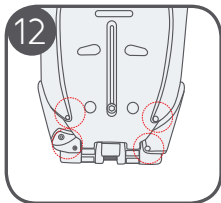


! Do not force may cause damage

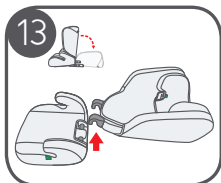
Remove the cover

see images 12 - 15

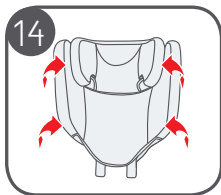
1. Turn the seat to the back and unlock the snap fastener. 12



2. Push backrest to make it separate from booster. 13

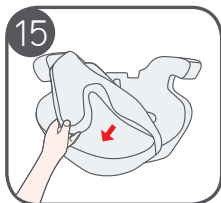


3. Pull all directions to take out the fabric cover. 14



4. Take off the fabric cover. 15

! Follow in reverse order and repeat the procedure to put on the fabric cover.



Care and Maintenance

- ! In daily use, check periodically the child seat. The child seat should be replaced after an accident.
- ! Please keep this child seat in dry and ventilated place to avoid damp moldy.
- ! If the child seat becomes dusty, clean the plastic pieces by swiping them with a damp sponge and let it dry naturally.
- ! For cleaning the entire child seat fabric cover, please refer to the washing instruction.

Washing instruction

cleaning the entire child seat fabric cover. Never use any solvent, chemical detergent or lubricant on any part of your child seat.

