

CHILD INFORMATION  
(KEEP WITH CAR SEAT AT ALL TIMES IN CASE OF EMERGENCY)  
NAME:  
.....

DATE OF BIRTH (DD/MM/YYYY):  
.....

ADDRESS:  
.....  
.....  
.....

ALLERGIES/MEDICAL CONDITIONS:  
.....  
.....  
.....

EMERGENCY CONTACT 1:

NAME:  
.....

PHONE NUMBER:  
.....

EMERGENCY CONTACT 2:

NAME:  
.....

PHONE NUMBER:  
.....

[www.cozynsafe.com](http://www.cozynsafe.com)

Cozy N Safe  
Oxford Street, Wolverhampton, West Midlands, WV14 7DP, UK  
Tel: +44 (0) 1902 494905 | Email: [enq@cozynsafe.com](mailto:enq@cozynsafe.com)

● 76cm-150cm



HUDSON i-Size

EST - 238

Instruction Manual



## GENERAL SAFETY INSTRUCTIONS

Please take the time to read these instructions carefully and always keep them in the storage pouch provided on the child seat for later reference. The instructions must accompany the child seat if it is later passed on to a third party.

### **DANGER! For the protection of your child:**

- \* Before closing the vehicle door, check that neither your child nor any parts of the child seat can get jammed in the door.
  - \* In the event of an accident at a collision velocity greater than 10 km/h, it is possible that the child seat may be damaged without the damage being immediately visible. In this case the child seat must be replaced. Please dispose of it properly.
  - \* Always have the child seat examined if it has been damaged (e.g. if it falls to the ground).
  - \* Regularly check all important parts for damage. In particular, ensure that all the mechanical parts are fully functional.
  - \* Never lubricate any parts of the child seat with grease or oil.
  - \* Never leave your child unattended in the child seat in the vehicle.
  - \* Have your child enter and exit the vehicle on the pavement side only.
  - \* When not in use, protect the child seat from direct exposure to sunlight. The child seat can become very hot in direct sunshine. Children's skin is sensitive and could be harmed as a result.
  - \* The more snugly the belt fits over your child's body, the safer your child will be. Therefore, avoid having your child wear thick clothes under the belt.
  - \* On long journeys, take regular breaks in order to give your child a chance to run about and play.
  - \* If using on the rear seat: Move the front seat far enough forward to ensure that your child's feet will not knock against the backrest of the front seat (to prevent the risk of injury).
- DANGER!** For the protection of all vehicle occupants:  
In the case of an emergency stop or accident, unsecured objects or people may cause injury to other occupants in the vehicle. Therefore, please always ensure that ...
- \* no load-bearing contact points are used other than those specified in these instructions and those marked on the child seat.
  - \* the backrests of the car seats are secured (for example, check that any fold-down rear seat bench has snapped into place).
  - \* all heavy or sharp edged objects present in the vehicle (e.g. on the parcel shelf) are held securely.

- \* all persons in the vehicle have their seatbelts fastened.
- \* the child seat is secured whenever it is in the vehicle, even if it is not carrying a child.

### **WARNING! For your protection when handling the child seat:**

- \* Never use the child seat in a free-standing position, not even for testing.
- \* To avoid damage, ensure that the child seat is not jammed in between hard objects (car door, seat rails, etc.).
- \* Keep the child seat in a safe place when not in use. Do not place heavy objects on the seat and do not store directly next to heat sources or in direct sunlight.
- \* The rigid items and plastic parts of a child restraint must be so located and installed that they are not liable, during everyday use of the vehicle to become trapped by a moveable seat or in a door of the vehicle.
- \* The child restraint must not be used without the cover.
- \* The seat cover should not be replaced with any other than the one recommended by the manufacturer, because the cover constitutes an integral part of the restraint performance.

### **USE IN THE VEHICLE**

#### **Use as intended**

This child seat has been designed, tested and approved according to the requirements of the European Standard for Child Safety Equipment (UN 129/03). It is designed to secure a child in the vehicle. It is not a toy and is not suitable for use as a seat outside the vehicle.

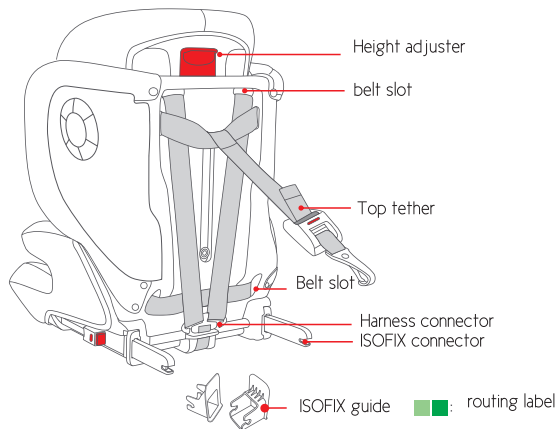
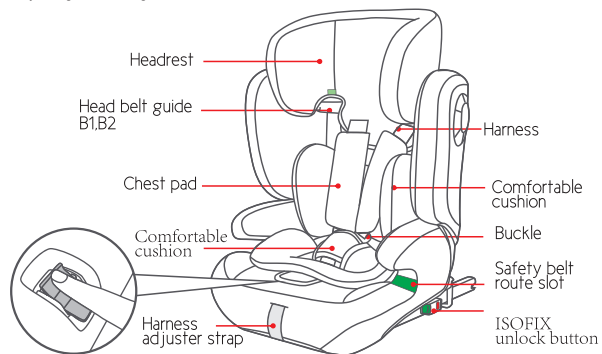
#### **SAFETY NOTES**

Elimination of the protective function through modifications. Unauthorised technical changes can cause the protective function of the seat to be reduced or completely eliminated. The certification is invalidated if any modifications are made to the child seat.

- \* Do not make any technical changes to the child safety seat.
- \* Only the manufacturer is permitted to make modifications to the child safety seat. Risk of injury through improper use. If you do not use this product as intended, serious injury or death may result.
- \* Never secure the child seat with a 2-point seat belt.
- \* Read and follow the instruction manual for the vehicle used to transport this child seat.
- \* If in doubt, refer to the manufacturer or the vendor of the child restraint system.
- \* Use the child seat according to the body height of the child to be secured.

## Parts List

Please make sure there are no missing parts. Please contact the retailer if anything is missing.



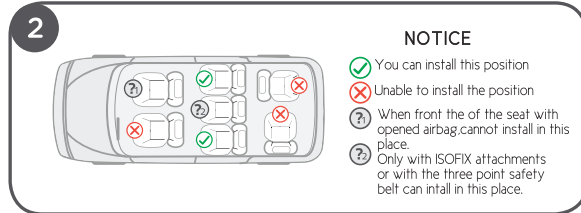
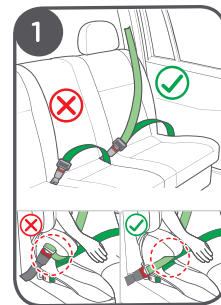
3

## Concerns on Installation

see images 1.2.

Only suitable if the approved vehicles are fitted with 3 point safety belts, approved to UN/ECE Regulation No.16 or other equivalent standards.

! If the buckle strap of car seat is too long, the child restraint system can not be installed firmly. It is very dangerous. If any doubt, please consult the child restraint system manufacturer.



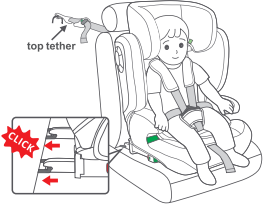

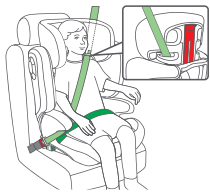
### NOTICE

- ✓ You can install this position
- ✗ Unable to install the position
- ⓘ When front of the seat with opened airbag, cannot install in this place.
- ⓘ Only with ISOFIX attachments or with the three point safety belt can install in this place.

4

## Scope of application for children

This child seat is approved for three installation methods, **A**, **B1** and **B2**. Use the installation method depending on the size of the child to be secured, see images 3.

3 Suitable for	Figure for installation
<p>Use installation method <b>A</b> 76-105cm/9kg-18kg With ISOFIX+Top Tether+ 5 point seat belt</p>	
<p>Use installation method <b>B1</b> 100-150cm/15kg-36kg With ISOFIX+car seat belt</p>	
<p>Use installation method <b>B2</b> 100-150cm/15kg-36kg With car seat belt</p>	

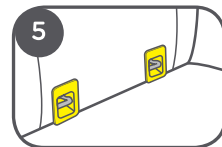
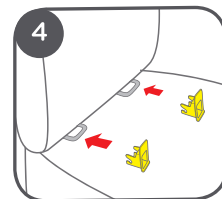
## Use the isofix

see images 4-7.

Fit the ISOFIX guides with the ISOFIX anchor points.4-5

! The ISOFIX guides can protect the surface of the vehicle seat from being torn. They can also guide the ISOFIX connectors.

Insert the locking arms into ISOFIX attachment points. 6 until you hear an audible 'CLICK' which indicates they are fully engaged. And on both sides of the locking arms button turn into (Green) 7



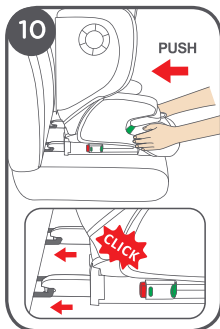
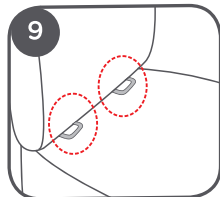
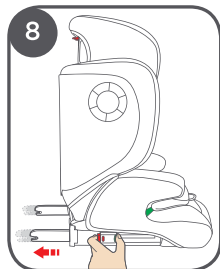
# A 76-105cm/9kg-18kg With ISOFIX+Top Tether+5 point seat belt

see images 8-16.

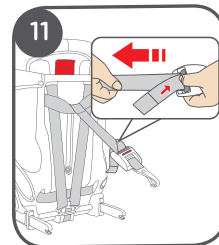
1. Press both button and push out the isofix connector.8

2. Find out isofix connection in the car.9

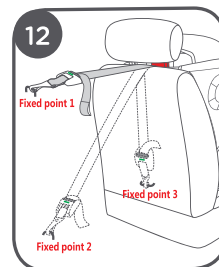
3. Push child seat follow the direction and insert isofix connector into isofix guide.10



4. Press the adjusting button and adjust the belt of top tether to the longest.11

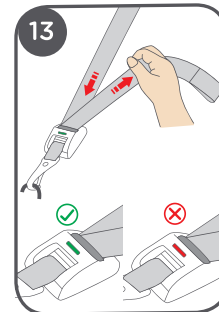


5. Connect top tether with the fixing point on the car.12

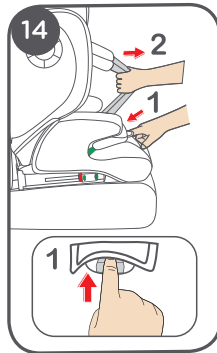


6. String the belt of top tether until the adjuster shows green.13

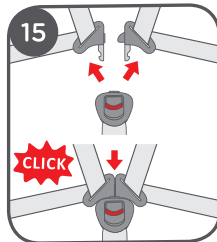
! Top tether is only for Use installation method A



7. Loosen the harness.14



8. Release the buckle, and put the child into the safety car seat. Then align the left and right buckle tongues to one tongue and insert into the buckle until you hear a 'Click'.15



9. Pull the shoulder straps upwards to remove the slack from the lap sections of the harness then pull the adjuster strap until the harness is fully tightened.16

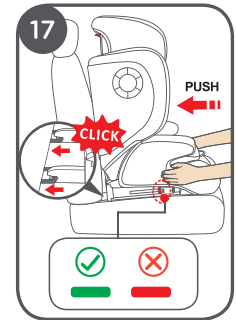


**B1** 100–150cm/15kg–36kg  
With ISOFIX+car seat belt

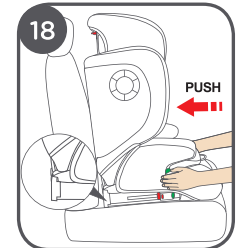
**B2** 100–150cm/15kg–36kg  
With car seat belt

see images 17–22.

1. 'B1' Connect ISOFIX with anchorage point on the car seat.17



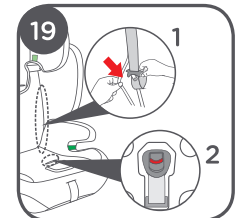
1. 'B2' Hide ISOFIX in the base. Put the seat against the car seat.18



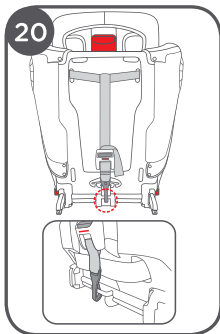
2. Routine to remove car seat pad.19  
(see image 30–34 for details)

1:Hide the strap of both sides behind the backrest cover.19-1

2:Place the buckle in the base (under the cover).19-2

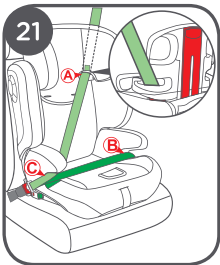


3. No need to take off the top tether.  
Click it onto the base.**20**  
! Do not use top tether when using adult safety belt.

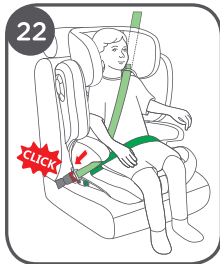


4. Follow the routine to install the baby car seat.**21**

- ! Stock the baby car seat in a safe place or ensure the baby car seat is firmly installed when not using it.



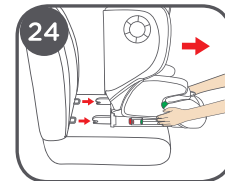
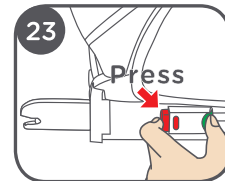
5. Put the child into the safety car seat and then Pull car seat belt follow the belt route and lock.**22**



## Disassembly and hide ISOFIX

see images 23-24.

Press the button to release the isofix connector **23** and take away the seat.**24**

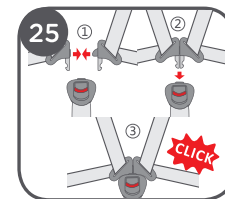


## Using the buckle

see images 25-26.

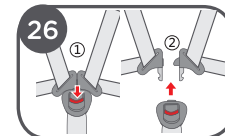
Locking Method:

Align the left and right buckle tongues to one tongue and insert into the buckle until you hear a 'Click'.**25**



Unlocking Method:

You can press the red button of the buckle downwards, the two metal sections will be pop up.**26**

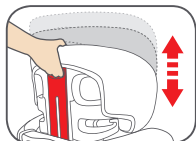


## Adjustment for Head Support and Shoulder Harnesses

### Note

Adjust the height of headrest and belt slot to suitable height of child.

! The height for the harness is adjusted by lifting the headrest.



5-point seat belt



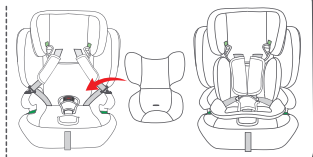
Car seat belt



## Instructions for use of cushion

### Note

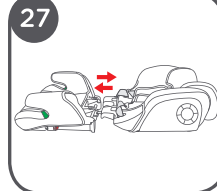
! Please use cushion for the child less than 87cm. Put cushion in child restraint system, and then adjust harness and cushion following the picture.



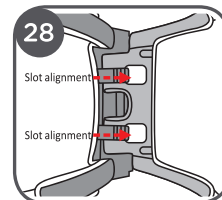
## Steps of backrest and base assembly

see images 27-29.

1. Align base and backrest in a straight line.<sup>27</sup>

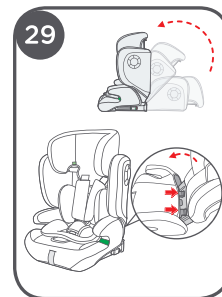


2. Place backrest hooks inside base securely.<sup>28</sup>



3. Gently keep pressure on hooks as you lift backrest up.<sup>29</sup>

! DO NOT FORCE MAY CAUSE DAMAGE.

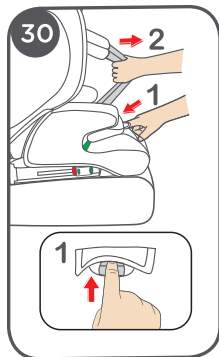




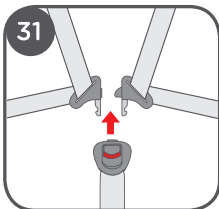
## Remove the cover

see images 30–37

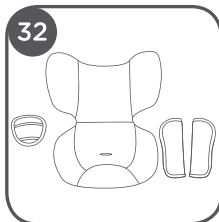
1. Loosen the harness.30



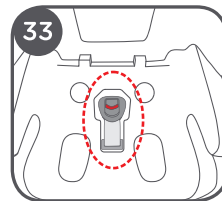
2. Release the buckle.31



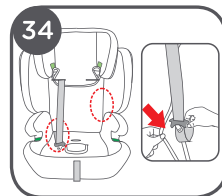
3. Keep the removed cushion well.32



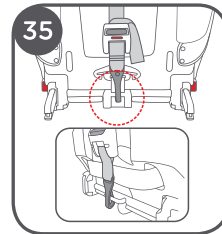
4. Place the buckle in the base (under the cover).33



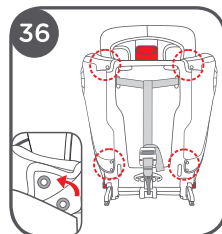
5. Hide the strap of both sides behind the backrest cover.34



6. Click the top tether onto the base. 35

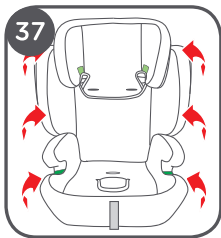


7. Turn the seat to the back and unlock the snap fastener.36



8. Pull all directions to take out the cover.**37**

! Follow in reverse order and repeat the procedure to put on the fabric cover.

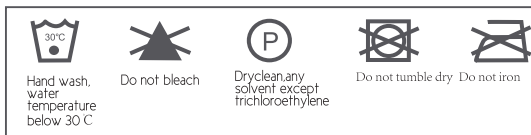


## Care and Maintenance

- ! In daily use, check periodically the child seat. The child seat should be replaced after an accident.
- ! Please keep this child seat in dry and ventilated place to avoid damp moldy.
- ! If the child seat becomes dusty, clean the seat belt and the plastic pieces by swiping them with a damp sponge and let it dry naturally.
- ! If food or drink drop accidentally on the buckle, disassemble the seat belt from the child seat and rinse it gently by warm water. Leave it dry naturally.
- ! For cleaning the entire child seat fabric cover, please refer to the washing instructions.

### Washing instruction

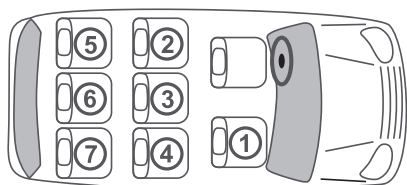
cleaning the entire child seat fabric cover. Never use any solvent, chemical detergent or lubricant on any part of your child seat.



## List of approved cars

The following vehicle list is only for reference. If your vehicle does not in the list, before using, please consult with the retailer or manufacturer.

The seat could not fit all seating positions at a stature above 135cm, if you have doubt, please consult with the manufacturer or retailer.



Saloon



No. of doors



Estate



No. of seat



Convertible



Before you purchase the vehicle, check that it is equipped with the appropriate anchorages



Hatchback



Year of manufacture



MPV



Maximum body height












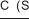




Coupe





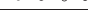










②④ Approved seats


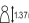


ALFA ROMEO		*
1997		②④
156 Sportwagon/ Crosswagon Q4	2007	②④
159 Sportwagon	2005 2011	① 137m ②④
Giulietta 940	2010	① 137m ②④
GT Sportcoupe	2004 2010	① 137m ②④
MiTo	2008	① 137m ① ②④
BMW		*
1(E87/E82/E81)	③ 3+5 2005	②④
1(E82)	2007	②④
1(E88)	2008	① ②④
3(E90)	2005	②④
3(E92)	2005	②④
3	08/05	②④
5(F10)	2010	②④
5(F11) Touring	2010	②④
5 GT	10/09	②④
7(E65) (Facelift 2005)	2001 2008	②④
7(F01)	2008	②④
Mini Club Man	2007	②④
Mini Countryman	① 4 2010	②④
Mini Countryman	① 5 2010	④
X1	10/09	②④
X5	2006	②④
X6	2008	① 135m ②④
Z4	2002	ISOFIX ①
DACIA		*
Duster	2010	②④
Lodgy	2012	②③④

Logan	2004	②④
Sandero	2008	②④
Sandero Stepway	2009	②④
Sandero Live 2	2012	②④
FORD		*
B-MAX	2012	②④
C-MAX	2011	②④
C-MAX	2003 2010	②④
Fiesta(MK7)	③ 3+5 2008	① 137m ②④
Fiesta	2012	① 137m ②④
Focus	2011	②④
Focus	2004 2010	① 137m ②④
Focus Turnier	2008 2010	②④
Kuga	2013	②④
Mondeo Turnier	2007	②④
Ranger	2011	②④
S-Max(Facelift 2010)	2006	②③④
Tourneo Connect	2002 2013	②④
Transit Custom	2012	②③⑥
HYUNDAI		*
Accent	③ 3+5 2000 2005	②④
Coupe	1999 2002	②④
Elantra	③ 5 2000 2006	②④
Getz	2002 2009	②④
H 1	2007	②④
i 10	2008	②④
i 20	2008	②④
ix20	2010	②④

i 30 	2007 2012	②④
i 35	2009	②④
i 40	2011	②④
Matrix	2001 2010	②④
<b>KIA *</b>		
Carens	2006 2013	②④
Carnival	2005	②④⑤⑦
Ceed 	2006 2012	②④
Ceed 	2012	②④
Cerato	2004 2008	②④
Opirus	2003 2010	②④
Magentis	2001 2005	②④
Picanto	2004 2011	②④
Rio	2005 2011	②④
Rio	2011	②④
Soul	2008	②④
<b>LEXUS *</b>		
GS	1997 2005	 ②④
IS	1998 2005	 ②④
IS	2005 2013	 ②④
RX	2003 2009	②④
<b>MAZDA *</b>		
2 DY	2003 2007	②④
2 DE	2007	②④
2	2013	②④
3 BL	2003 2009	②④

3 BK	2009 2013	②④
5  7	2005 2010	②④
5 CW	2010	②④
6 	2002 2007	 ②④
6 	2008 2012	 ②④
CX 7	2006 2009	②④
CX 7	2009	②④
MX5  5	1998 2005	①
MPV  6+7	1999 2005	
Premacy	1999 2005	②④
RX 8	2003 2012	②④
<b>MERCEDES-BENZ *</b>		
A	05/05	②④
B (Facelift 2008)	06/05	②④
C (Facelift 2004) 	2000 2007	②④
C (W204) 	2007	②④
C (S204) 	2007	②④
C (204)	03/11	②④
E (W212;S212) 	2009	②④
E (C207) 	2009	②④
GLK	2008	②④
ML (W164)	07/05	②④
R (W251/V251)	12/05	②④⑤⑦
<b>SKODA *</b>		
Citigo	2011	 ②④
Fabia I 	1999 2007	②④

Fabia I 	1999 2007	②④
Fabia II 	2007	②④
Felicia 	1994 2001	②④
Octavia I 	2000 2010	①②④
Octavia II 	2004 2012	①②④
Octavia III 	2013	①②④
Octavia Scout 	2007 2012	②④
Rapid	2012	②④
Roomster(+Facelift)	2006	②④
Superb I	2001 2008	②④
Superb II 	2008	②④
Yeti	2009	②④
<b>SUBARU *</b>		
Forester	2008 2013	②④
Impreza 	2007 2012	②④
Legacy 	2003 2009	②④
Outback	2003 2009	②④
Outback	2009	②④
Trezia	2011	②④
<b>TOYOTA *</b>		
Auris	2007 2012	②④
Auris Hybrid	2010	②④
Avensis(T25) 	2003 2009	②④
Avensis(T27) 	2009	②④
Corolla 	1997 2002	②④
Corolla 	2002 2009	②④
Corolla 	2006	②④

IQ	2009	②④
Land Cruiser	2002 2009	②④
Land Cruiser	2009	②④
Previa/Estima	2000 2006	②④
Previa/Estima	2006	②④
Prius	2003 2009	②④
Prius(+Facelift)	2009	②④
RAV 4	2000 2006	②④
RAV 4	2006 2013	②④
Urban Cruiser	2009	②④
<b>VOLVO *</b>		
C 30	2006 2012	 ②④
C 70	2005 2013	②④
XC 70	2003	②④
S 40/V 40	1995 2004	②④
S 40/V 40	2004 2012	②④
S 60	2000 2009	②④
S 60	2010	②④
S 80	1998 2006	②④
S 80 (+Facelift)	2006	②④
V 50	2004 2007	②④
V 50	2007 2012	②④
V 60	2010	 ②④
V 70 	2000 2007	②④
V 70  /XC70(+Facelift)	2007	②④
XC 60	2008	②④