

COZY **N** SAFE®

eXCALIBUR



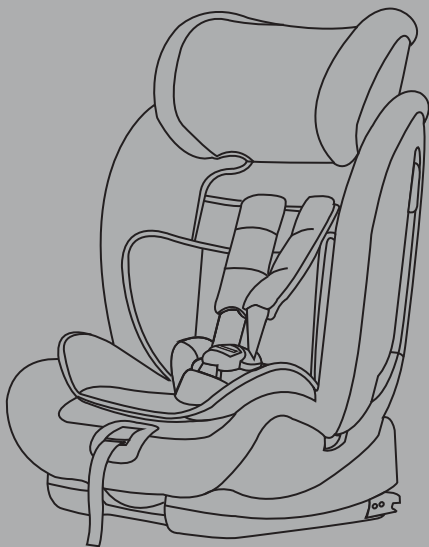
Instruction Manual

INSTRUCTION MANUAL

9 – 36kg (Approx. 9 months – 11 years)

Model: EST-02

Group: 1/2/3



Please read this manual carefully before use

COZY SAFE



CONTENTS

1. Warning	01
2. USE IN THE VEHICLE	02
3. PREPARATORY WORKS	03-04
3.1. Prepare ISOFIX	
3.2. Adjusting the headrest in 5-point harness installation	
3.3. Adjusting the headrest in vehicle belt installation	
4. INSTALLATION	05-11
4.1. Group 1 (9-18 kg)	
ISOFIX connectors +Top tether+ 5-point harness	
4.1.1. Securing your child with the 5-point harness	
4.2. Group 1 (9-18 kg) vehicle belt+ 5-point harness	
4.3. Group 2 (15-25 kg) vehicle belt+ top tether +5-point harness	
4.4. Group 2 (15-25 kg) & group 3 (22-36 kg) vehicle belt	
5. REMOVAL OF THE CHILD SEAT	11
6. REMOVING THE 5-POINT HARNESS	12-13
7. REFITTING THE 5-POINT HARNESS	14-15
8. CARE AND MAINTENANCE	16-17
8.1. Care for the harness buckle	
8.2. Cleaning	

1. WARNING

Please read carefully before installing the child seat in the vehicle.

1. This child safety seat is suitable for use as group 123 from approx. 9 months to 11 years age/ 9–36kg
2. Please read these instructions carefully, as incorrect installation could result in serious injury. If any injuries should occur as a result of incorrect installation, the manufacturer will accept no responsibility.
3. This child seat is in accordance with the ECE R44/04 regulations and may be installed in the majority of vehicles equipped with approved points, such as ISOFIX points, in accordance with ECE regulation 16.
However, prior to purchase, the child seat should always be tested in your vehicle with the child seated, in order to ensure that the model meets your needs.
4. Never use the child safety seat without its cover.
5. Protect the child safety seat from direct sunlight, as the seat can get very hot and harm the child.
6. Child seats or accessories that are damaged or have been used incorrectly must be replaced.
7. Do not leave heavy objects inside the car, as these may injure the child in the event of an accident.
8. Ensure that no part of the child seat is caught in the door of the vehicle or in a reclining seat. In addition, ensure that the safety seat is correctly installed and secured.
9. Do not disassemble, modify, or add any piece to the child seat or harness, as this would seriously affect its basic functioning and the safety that the child seat provides.
10. The safety seat must remain installed in the vehicle. Even if the child is not seated in the car seat. The child must never be left unattended while seated in the safety seat, not even outside the vehicle.
11. Keep the safety seat away from corrosive products.
12. The manufacturer guarantees the quality of its products, but not the quality of second-hand products or products belonging to other companies.
13. Instruction illustrations are for informational purposes only. The child restraint system may contain small differences compared to the photographs or images in the instruction manual.

COZY SAFE



2. USE IN THE VEHICLE

Please observe the instructions on the use of child restraint systems described in your vehicle owner's manual.

The seat may be also used in vehicles equipped with ISOFIX ,Top Tether anchoring systems or 3-point belt

You can use your child car seat as follows:

In the direction of travel



Against the direction of travel



with 2-point belt (Vehicle belt)

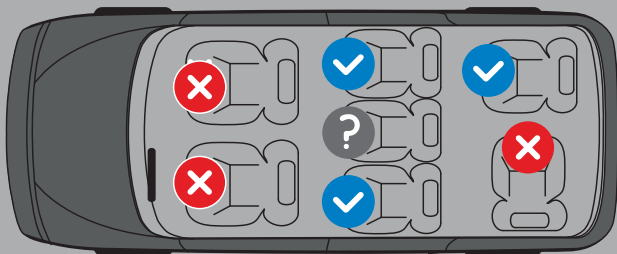


On seats featuring:

ISOFIX attachments and Top Tether anchoring



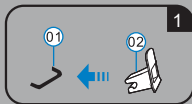
3-point belt (Vehicle belt)



3. PREPARATORY WORKS

3.1 Prepare ISOFIX

1. If your vehicle is not equipped with the ISOFIX insert guides as standard, clip the two insert guides 02 which are included with the seat with the cut-out facing upwards onto the two ISOFIX attachment points 01 of your vehicle.



TIP: The ISOFIX attachment points are located between the surface and the backrest of the vehicle seat (fig.1).

2. Pull the fabric loop 03 to pull out both locking arms to the most extended position (fig.2).



3.2 Adjusting the headrest in 5-point harness installation

A correctly adjusted headrest 07 ensures optimal protection for your child in the safety seat:

The headrest 07 must be adjusted so that the shoulder belts 08 are at the same level as your child's shoulders (fig.3).

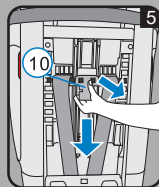
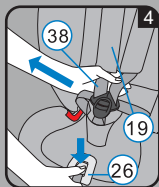
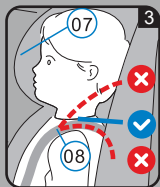
CAUTION! The shoulder belts 08 must not run behind the back of the child or at ear height or above the ears.

The shoulder belts are adjusted as follows:

1. Press the adjusting button 26 and at the same time pull both shoulder belts 08 forwards. Do not pull on the shoulder pads 19, loosen the 5-point harness of the child seat as much as possible (fig.4).

Back side of the child seat:

2. Press the button of the shoulder belt height adjuster 10 at the rear of the seat shell and tilt the shoulder belt height adjuster 10 towards you.
3. Slide the shoulder belt height adjuster 10 to select the correct height of the shoulder belts 08 and engage it in the position that fits for your child by releasing the button (fig.5).



COZY SAFE



3.3. Adjusting the headrest in vehicle belt installation

A correctly adjusted headrest 07 ensures that the diagonal seat belt section 11 is optimally positioned, and gives your child the optimal protection.

The headrest 07 must be adjusted so that there is a space two fingers wide between the headrest 07 and your child's shoulders (fig.6).

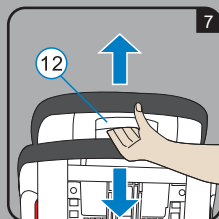
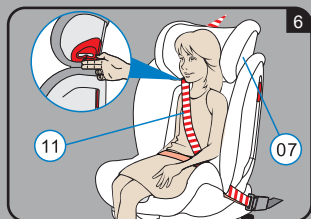
To adjust the height of the headrest to fit your child:

1. Squeeze the adjustment handle 12 on the back of the headrest 07.

This unlocks the headrest (fig.7).

2. You can now move the unlocked headrest 07 to the desired height. As soon as you release the adjustment handle 12 the headrest 07 will lock into place.

3. If the position of headrest 07 is still not correct, additional adjustments can be made through the shoulder belt height adjuster 10, as explained in Section 3.2



This seat offers a variety of mounting options, the following table indicates the types of installation for the respective groups:

Group	Fitting options	Vehicle belt	ISOFIX	Top tether	Child installation	User guide chapter
Group 1	Method 1	Yes			With 5-point harness	4.1
	Method 2		Yes	Yes	With 5-point harness	4.2
Group 2	Method 1	Yes		Yes	With 5-point harness	4.3
	Method 2	Yes			Vehicle belt	4.4
	Method 3	Yes	Yes		Vehicle belt	4.4
	Method 4	Yes	Yes	Yes	Vehicle belt	4.4
Group 3	Method 1	Yes			Vehicle belt	4.4
	Method 2	Yes	Yes		Vehicle belt	4.4
	Method 3	Yes	Yes	Yes	Vehicle belt	4.4

COZY SAFE



4. INSTALLATION

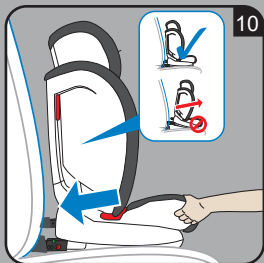
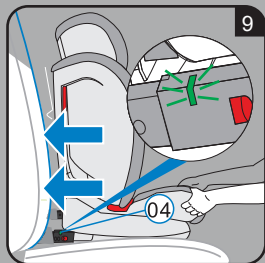
4.1 GROUP 1 (9-18 kg)


ISOFIX connectors + Top tether+ 5-point harness

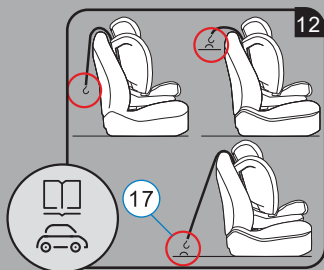
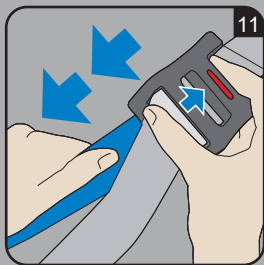
1. Make sure that the child seat's 5-point harness is installed correctly (see section 7).
2. Follow the steps in section 3.1 (to prepare the ISOFIX.)
3. Follow the steps in section 3.2 (to adjust headrest.)
4. Take the Top Tether and lay it over the child seat.
5. Place the child seat facing in the direction of travel on the vehicle seat.
6. Grasp the child seat with both hands and slide the two locking arms 15 firmly into the insert guides O2 until the locking arms engage with a clicking noise on both sides, the ISOFIX indicator O4 will turn green on both sides (fig.8,9).

CAUTION! The locking arms are only correctly engaged if both of the safety buttons O4 are completely green.

7. Push the child seat towards the backrest applying firm, even pressure on both sides (fig.10).
8. Try to move the child safety seat to make sure it is safely attached and re-check the green safety buttons O4 to make sure that both of them are completely green.



9. Take the top tether and if required, lengthen the belt by pressing the top tether brake button to release the strap, pulling to adjust as necessary (fig.11).
10. Hook the snap hook 17 into the Top Tether anchoring point recommended in your vehicle owner's guide. Look for this symbol in your vehicle (fig.12). 
11. To tension the top tether, remove any slack by pulling on the free end of strap until it is suitably tightened. The top tether will be properly tightened when the tension indicator turns completely green (fig.13).
12. Follow the steps in the next section securing your child with the 5-point harness.

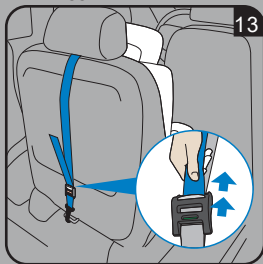


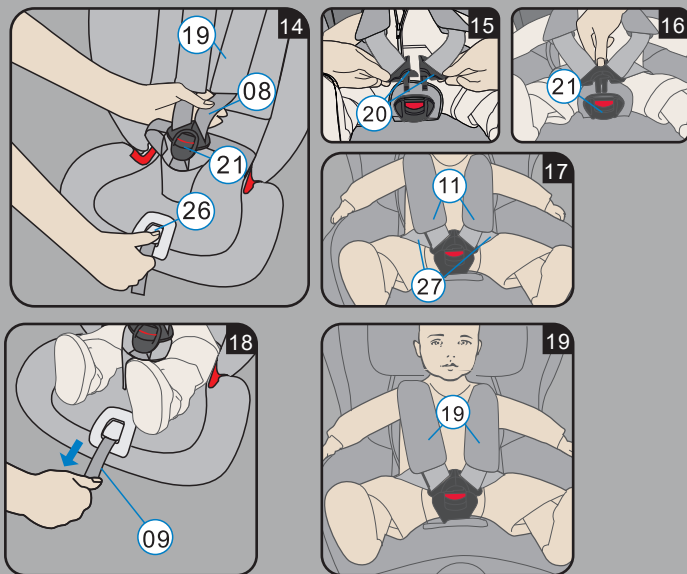
4.1.1 SECURING YOUR CHILD WITH THE 5-POINT HARNESS

The more snugly the harness fits over your child's body, the better your child will be protected.

Therefore avoid putting thick clothes on your child under the belt.

1. Open the harness buckle 21 by pressing the red button.
2. Press the adjusting button 26 and at the same time pull both shoulder belts 08 forwards. Do not pull on the shoulder pads 19 (fig.14).
3. Place your child in the child seat.





4. Make sure that your child's back lies flat against the backrest of the child seat.
5. Guide the two buckle latches 20 together and engage them before putting them into the harness buckle 21 – this should make a click noise (fig.15,16,17).
6. Pull on the adjuster strap 09 until the harness lies flat and is close against your child's body.

For the safety of your child, before every journey in the car check that...

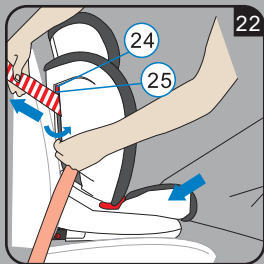
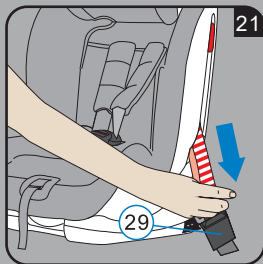
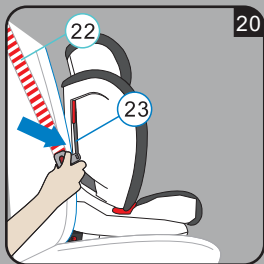
- The child safety seat is engaged on both sides with the ISOFIX locking arms 15 in the ISOFIX attachment points 01 and that both green safety buttons 04 are completely green.
- The child seat is firmly installed in the vehicle.
- The Top Tether 13 is tightly tensioned over the backrest of the car seat and the tension indicator 18 is green.
- The straps of the child safety seat are close to the body without constricting the child.
- The shoulder belts 08 are correctly adjusted and the straps are not twisted.
- The shoulder pads 19 are at the same level as your child's shoulders.
- The buckle latches 20 are engaged in the harness buckle 21.

COZY SAFE



4.2 GROUP 1 (9-18 kg) Vehicle belt+ 5-Point Harness

1. Make sure that the child seat's 5-point harness is installed correctly (see section 7).
2. Follow the steps in section 3.2 (to adjust headrest).
3. Place the child seat facing in the direction of travel on the vehicle seat.
4. Pull the vehicle belt 22 out and guide it through the belt guides of the child seat. Make sure that the belt is not twisted (fig.20).
5. Engage the buckle tongue in the vehicle seat buckle 29 this should make a click noise (fig.21).
6. On the side opposite the car seat belt buckle, press lever 24 and hold down and insert diagonal belt in belt lock-off 25 (fig.22).
7. Apply your body weight to the child seat (kneel into the seat). At the same time pull the diagonal belt strongly to tighten .
8. Follow the steps in section securing your child with 5-point harness.



For the safety of your child, before every journey in the car check that...

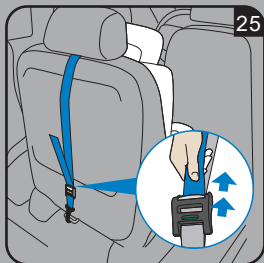
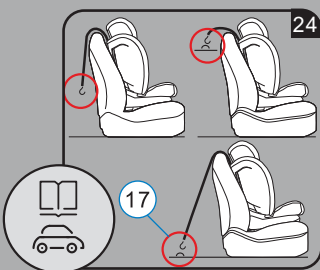
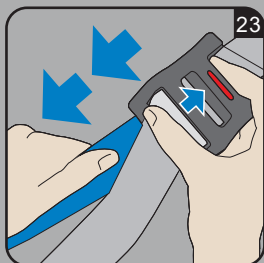
- The child seat is firmly installed in the vehicle;
- The belt is not twisted.
- The diagonal belt is only clamped by the lock-off which is located on the opposite side from the car seat belt buckle.
- The straps of the child safety seat are close to the body without constricting the child.
- The shoulder belts 08 are correctly adjusted and the straps are not twisted.
- The shoulder pads 19 are at the same level as your child's shoulders.
- The buckle latches 20 are engaged in the harness buckle 21.



4.3 GROUP 2 (15–25 kg)

Vehicle belt+ Top tether +5-Point Harness

1. Follow the steps in section 4.2 (to fix child seat by three point belt.)
2. Take the top tether and if required, lengthen the belt by pressing the top tether brake button to release the strap, pulling to adjust as necessary (fig.23).
3. Hook the snap hook 17 into the Top Tether anchoring point recommended in your vehicle owner guide. Look for this symbol in your vehicle (fig.24).
4. To tension the top tether, remove any slack by pulling on the free end of strap until it is suitably tightened. The top tether will be properly tightened when the tension indicator turns completely green (fig.25).
5. Follow the steps in section securing your child with 5-point harness.



For the safety of your child, before every journey in the car check that...


- The child seat is firmly installed in the vehicle.
- The belt is not twisted.
- The Top Tether 13 is tightly tensioned over the backrest of the car seat and the tension indicator 18 is green.
- The diagonal belt is only clamped by the lock-off which is located on the opposite side from the car seat belt buckle.
- The straps of the child safety seat are close to the body without constricting the child.
- The shoulder belts 08 are correctly adjusted and the straps are not Twisted.
- The shoulder pads 19 are at the same level as your child's shoulders.
- The buckle latches 20 are engaged in the harness buckle 21.



4.4 GROUP 2 (15–25 kg) & GROUP 3 (22–36 kg) Vehicle belt

1. Make sure that the child seats 5-point harness is removed correctly (see section 6)
2. Follow the steps in section 3.3 (to adjust headrest.)
3. Install car seat on vehicle.

Option A. Install child seat with ISOFIX connectors and Top tether.

1. Take the Top Tether and lay it over the child seat.
2. Place the child seat facing in the direction of travel on the vehicle seat.
3. Grasp the child seat with both hands and slide the two locking arms 15 firmly into the insert guides 02 until the locking arms engage with a clicking noise on both sides, the ISOFIX indicator 04 turns green on both sides (fig.8,9).
4. Take the top tether and if required, lengthen the belt by pressing the top tether brake button to release the strap, pulling to adjust as necessary (fig.11).
5. Hook the snap hook 17 into the Top Tether anchoring point recommended in your vehicle owner's guide. Look for this symbol in your vehicle (fig.12). 
6. To tension the top tether, remove any slack by pulling on the free end of strap until it is suitably tightened. The top tether will be properly tightened when the tension indicator turns completely green (fig.13).

Option B. Install Child seat with ISOFIX connectors only.

1. Place the child seat facing in the direction of travel on the vehicle seat.
2. Grasp the child seat with both hands and slide the two locking arms 15 firmly into the insert guides 02 until the locking arms engage with a clicking noise on both sides, the ISOFIX indicators 04 will turn green on both sides (fig.8,9).

Option C. Install without ISOFIX connectors neither Top tether.

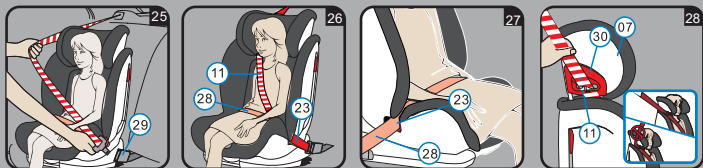
Make sure ISOFIX connectors are in the shortest position.

1. Have your child sit down in the child seat.
2. Pull out the vehicle seat belt and guide it in front of your child to the vehicle seat buckle 29. Engage the buckle tongue in the vehicle seat buckle 29 CLICK! (fig.25).

CAUTION! Do not twist the belt.



4. INSTALLATION / 5. REMOVAL OF THE CHILD SEAT



3. Place the diagonal seat belt section 11 and lap belt section 28 on the side of the vehicle seat belt buckle 29 under the armrest and into the red belt guide 23 of the child seat (fig.26).
4. Place the lap belt section 28 on the other side of the child seat in the red belt guide 23 (fig.27).
5. Guide the diagonal seat belt section 11 into the red belt holder 30 of the headrest 07 until it lies completely in the belt holder 30 and is not twisted (fig.28).
6. Make sure that the diagonal seat belt section 11 runs over your child's shoulder bone, and not in front of his or her neck.

Tip! You can still adjust the height of the headrest 07 again here in the vehicle.

For the safety of your child, before every journey in the car check that...

- The lap belt section 28 runs through the light red belt guides 23 on both sides of the seat cushion.
- The diagonal seat belt section 11 on the side of the vehicle seat belt buckle 29 also runs through the light red belt guide 23 of the seat cushion.
- The diagonal seat belt section 11 runs through the dark red belt holder 30 of the headrest.

5. REMOVAL OF THE CHILD SEAT

1. To release the ISOFIX fastening, squeeze the safety button, first on one side, then on the other.
2. Open the buckle of the vehicle seat belt and pull out the diagonal from lock-off.
3. To release the Top Tether anchoring, loosen the belt by pressing the brake button of the adjuster. Then take the snap hook out of the anchoring point.
4. Push the ISOFIX locking arms back into the seat shell .

COZY SAFE



6. REMOVING THE 5-POINT HARNESS

1. Loosen the 5-point harness 38 of the child seat as much as possible (fig.29).

Back side of the child seat:

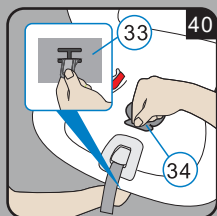
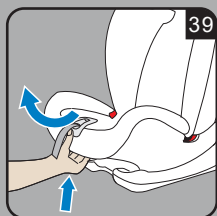
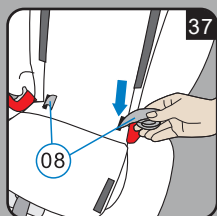
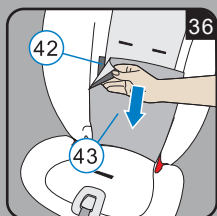
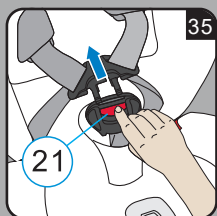
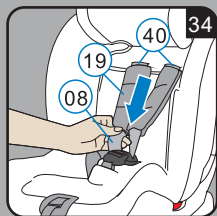
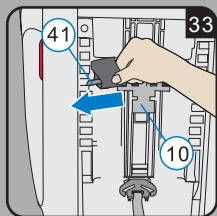
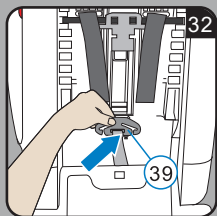
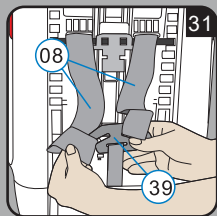
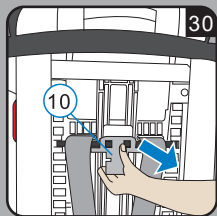
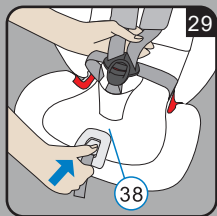
2. Press the button of the shoulder belt height adjuster 10 at the rear of the seat shell and tilt the shoulder belt height adjuster 10 towards you (fig.30).
3. Move the shoulder belt height adjuster 10 into the top position and fix the position by releasing the button of the shoulder belt height adjuster.
4. Loosen the 5-point harness 38 of the child seat as much as possible. Unhook the shoulder belts 08 on the back side of the child seat from the connecting piece 39 (fig.31).
5. Snap the connecting piece 39 in the provided storage clips (fig.32).
6. Slide the belt loops off of the plastic extensions 41 of the shoulder belt height adjuster 10 (fig.33).

Front side of the child seat:

7. Pull below both, the shoulder pads 19 and the two shoulder belts 08 to the front through the slots 40 (front side of the child seat) (fig.34).
8. Open the harness buckle 21 (press the red release button) (fig.35).
9. Open the left and right velcro 42 on the lower part of the cover 43 and lift the cover piece to the front. Slide the buckle latches 20 down into the storage compartment (fig.36.37).
10. Roll the shoulder belts 08 together and place them also into the storage compartment (fig.37).
11. Reposition the two cover parts to the rear and lock the velcro 42 on the left and right side of the cover back side (fig.38).
12. Lift the recline handle and pull at the front to fully recline the child seat (fig.39).
13. Grasp the metal plate 33 from underneath and turn it into a vertical position.
14. Push upwards and slide the metal plate 33 through the slot 34 .

Remove the harness buckle (fig.40).





COZY SAFE



7. REFITTING THE 5-POINT HARNESS

1. Squeeze the adjustment handle 12 at the rear of the headrest 07 and push the headrest into the lowest position (fig.41).
2. Open the left and right buttons on the lower part of the cover 43 and lay the cover piece on the seating area (fig.42).
3. Take the shoulder belts 08 and the buckle latches 20 from the storage compartment 47 and unroll the shoulder belts (fig.43).
4. Fold back the two cover pieces and close the left and right poppers 42 on the lower part of the cover (fig.44).
5. Refitting harness buckle 21 and crotch pad. Group 1 (9-18 kg) use the belt slot closest to the backrest a, for Group 2 (15-25 kg) use the one furthest away b.(fig.46)
6. Take the harness buckle 21 and hold the metal plate 33 vertically. Push it with the narrow side upwards through the belt slot a or b into the seat shell from above (fig.45).
7. Ensure by looking underneath the seat that the metal plate 33 is in a horizontal position and check the installation by pulling on the harness buckle 21 several times (fig.46.47).
8. Guide the two buckle latches 20 together and engage them before putting them into the harness buckle 21 - this should make a click noise (fig.48).

CAUTION! The lap belts must not be twisted or swapped.

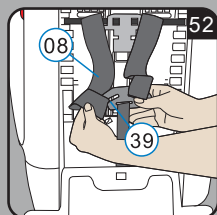
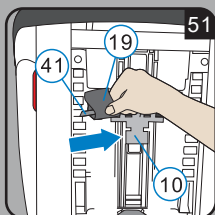
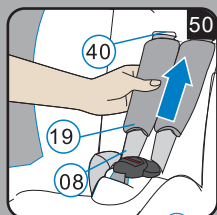
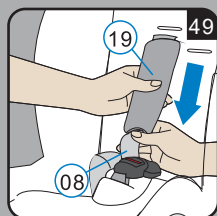
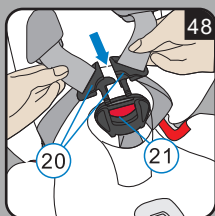
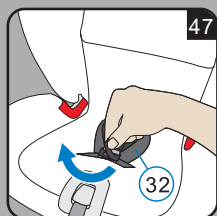
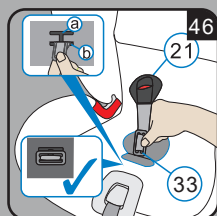
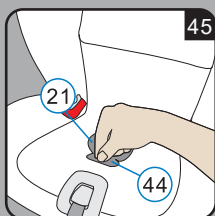
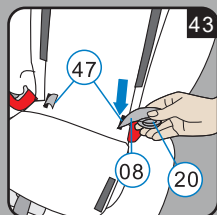
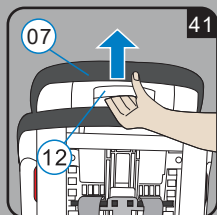
9. Thread the shoulder pads 19 onto the shoulder belts 08 in the correct orientation as shown, ensuring there are no twists. Align the two loops of the shoulder belts 08 and strap loops of the shoulder pads 19 (fig.49) .
10. Pull the shoulder belts 08 and the strap loops of the shoulder pads 19 through the slots 40 (fig.50).
11. Pull the strap loops of the shoulder pads 19 onto the plastic extensions 41 of the shoulder belt height adjuster 10 (fig.51).

Tip: The strap loops of the shoulder pads should be in the lower part.

CAUTION! The shoulder belts 08 must not be twisted or swapped.

12. Take the connecting piece 39 from the provided storage clips on the back side of the child seat.
13. Hook the shoulder belts 08 back onto the connecting piece 39 . The left loop on the left arm of the connecting piece and the right loop on the right arm (fig.52).





8. CARE AND MAINTENANCE

8.1 Care for the harness buckle

It is vital for the safety of your child that the harness buckle works correctly.

Malfunctions of the harness buckle are usually caused by accumulations of dirt or foreign bodies, such as food.

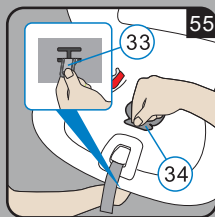
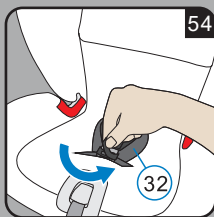
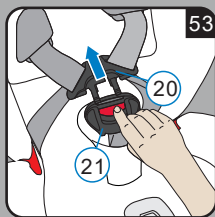
Malfunctions are as follows:

- The buckle latches are ejected only slowly when the red release button is pressed.
- The buckle latches will no longer lock home (i.e. they are ejected again if you try to push them in).
- The buckle latches engage without an audible "CLICK".
- The buckle latches are difficult to insert (you feel resistance).
- The buckle only opens if extreme force is applied.

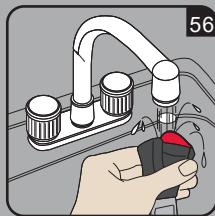
Remedy

wash out the harness buckle so that it functions properly once again:

Cleaning the harness buckle:



1. Follow section 6 to remove the harness buckle 21 (fig.53, 54, 55).
2. Soak the harness buckle 21 in warm water with washing up liquid for at least an hour. Then rinse thoroughly.

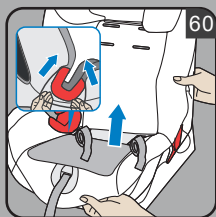
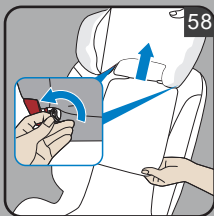
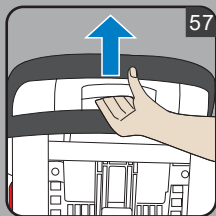


COZY SAFE



8.2 Cleaning

- The cover can be removed and washed. Please observe the instructions on the washing label of the cover. Removing the cover:



A) Headrest

1. Move the headrest of the child seat to the upper position. (fig.57)
2. Take the elastic seam of the cover from the hooks at the back side of the headrest (fig.58) and remove the cover of the headrest.

B) Cover

1. Undo the hooks on the bottom side (fig.59).
2. Remove the cover (fig.60).

Re-fitting Simply follow the steps in the opposite order.





COZY SAFE
eXCaLiBuR