

CHILD INFORMATION  
(KEEP WITH CAR SEAT AT ALL TIMES IN CASE OF EMERGENCY)

NAME:

.....

DATE OF BIRTH (DD/MM/YYYY):

.....

ADDRESS:

.....

.....

.....

ALLERGIES/MEDICAL CONDITIONS:

.....

.....

.....

EMERGENCY CONTACT 1:

NAME:

.....

PHONE NUMBER:

.....

EMERGENCY CONTACT 2:

NAME:

.....

PHONE NUMBER:

.....

Cozy N Safe, Oxford Street, Wolverhampton, West Midlands, WV14 7DP, UK  
Tel: +44 (0) 1902 494905, Email: [enq@cozynsafe.com](mailto:enq@cozynsafe.com), Web: [www.cozynsafe.com](http://www.cozynsafe.com)

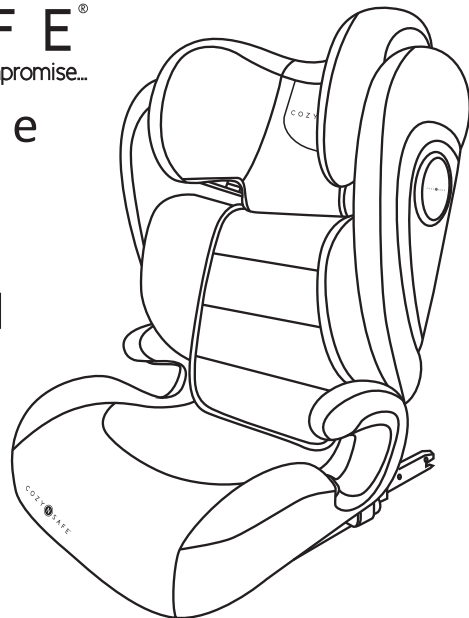
COZY  SAFE<sup>®</sup>  
Without Compromise...

COZY  SAFE<sup>®</sup>  
Without Compromise...

AUGUSTA i-Size

EST307

Instruction Manual



Suitable For Children  
100-150cm

[www.cozynsafe.com](http://www.cozynsafe.com)



# Contents

## Contents

Vital information-READ NOW .....	02
Notice .....	04
Safety notice .....	06
Parts of the seat .....	07
Seat assembly .....	08
Vehicle belt + ISOFIX installation .....	10
Vehicle seat belt installation .....	12
Headrest adjustment .....	13
Removing seat from vehicle .....	13
Maintenance and cleaning.....	14

# Vital information–READ NOW

For your child's safety. Please read these instructions carefully before use and keep them for future reference. Failure to follow the instructions contained in this manual could result in serious injury to your child.

- Do not use this child car seat in the home. It has not been designed for home use and should only be used in your vehicle.
- Never leave your child unattended in the child car seat, even for a short time.
- The child car seat should be changed when it has been subject to violent stresses in an accident.
- This child restraint should always be secured in the vehicle even when not in use. In a crash or sudden stop, an unsecured child car seat may injure other occupants.
- Always make sure that any straps holding the child restraint to the vehicle are tight. The Vehicle belt restraining the child should be adjusted to the child's body and should not be twisted.
- **IMPORTANT!** Ensure that any lap straps are worn low down, so that the pelvis is firmly engaged.
- Do not use any load bearing contact points other than those described in the instructions and marked on the child restraint, when in doubt, please contact the child restraint manufacturer.

- Any luggage or other objects liable to cause injuries in the event of a collision should be properly secured.
- Ensure that any part of the child car seat during everyday use of the vehicle cannot become trapped by a moveable seat or in a door of the vehicle.
- To prevent the risk of falling, your child should always be fastened securely in the child car seat.
- It is dangerous to make any alterations or additions to the device without the approval of the competent authority. It is also dangerous not to follow the installation instructions provided by the child restraint manufacturer.
- This child safety seat is designed for children from 100-150cm.
- The child restraint must not be used without the cover.
- The seat cover should not be replaced with any cover, other than the one recommended by the manufacturer because the cover constitutes an integral part of the restraint performance.
- Before you adjust any movable or adjustable parts of your child car seat, you must remove your child from the child car seat.
- The child car seat should be kept away from sunlight if the seat is not provided with a sun cover, otherwise it may be too hot for the child's skin.

- Never use a second-hand product as you can never be certain what has happened to it.
- Notice: Do not use in any configuration not shown in the instructions.
- Important! Please refer to the vehicle's manual before using the ISOFix connection points on the child car seat.
- Ensure that the buckle and child car seat fitting is checked prior to every journey.

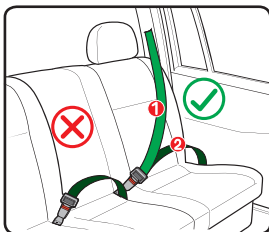
## Notice

### Notice

This is an i-Size booster seat Enhanced Child Restraint System. It is approved according to UN Regulation NO.129, for use primarily in i-Size seating positions as indicated by vehicle manufacturers in the vehicle users' manual.

If in doubt, consult either the Enhanced Child Restraint System manufacturer or the retailer.

DIRECTION	GROUP	INSTALLATION METHOD	TYPE
Forward facing	100-135cm	3-point Belt ISOFIX+3-point Belt	i-Size booster seat
Forward facing	130-150cm	3-point Belt ISOFIX+3-point Belt	Specific vehicle booster seat



### ⚠ WARNING

Only suitable if the approved vehicles are fitted with 3 point safety belts approved to UN/ECE Regulation No.16 or other equivalent standards.

- ① Car belt diagonal belt
- ② Car belt lap belt

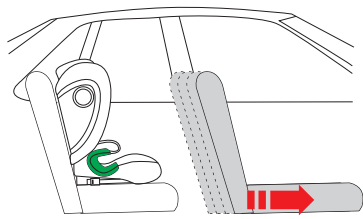
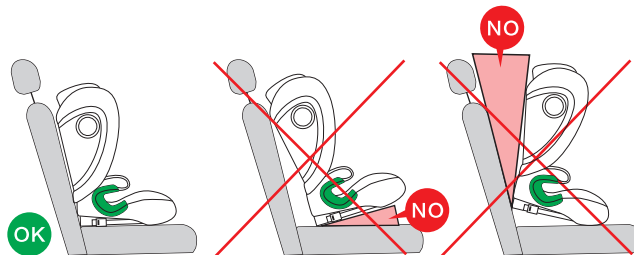
The rear vehicle seats are the most safe position for children under 12 years. This child seat must be installed on a forward facing seat. Rearward and side ward facing is strictly prohibited. Do not install the child safety seat on the front seat with an active airbag

- ✔ You can install this position
- ✘ Unable to install the position
- ❓ Do not install the child safety seat on the front seat with an active airbag.
- ❓ Install only with the three point safety belt in this location.

## ⚠ WARNING

Please read the instruction manual carefully before use. Incorrect installation could cause serious injury, in this case, the manufacturer shall not be responsible for any kind of responsibility.

## Safety notice

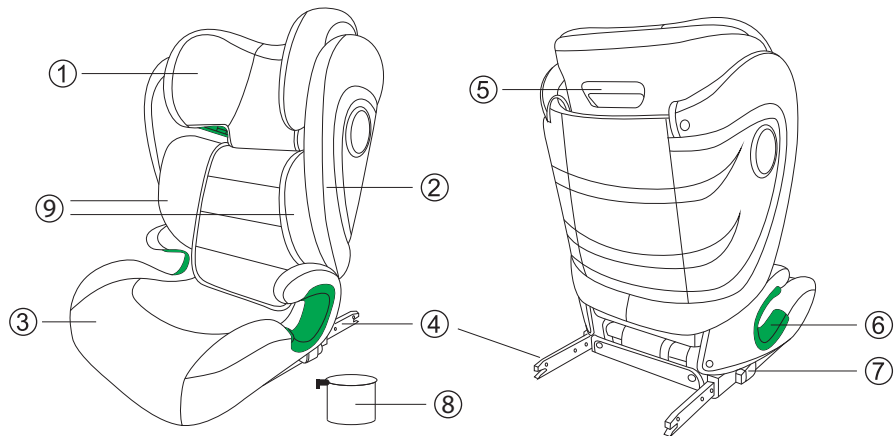


Move the front seat as far forward as possible to ensure that the child's legs have a comfortable space for movement.

Check whether the child car seat is installed correctly. Proper installation is crucial to ensure the safety of your child.

Always follow the instructions on the belting stickers located on both sides of the seat or the instructions in the manual.

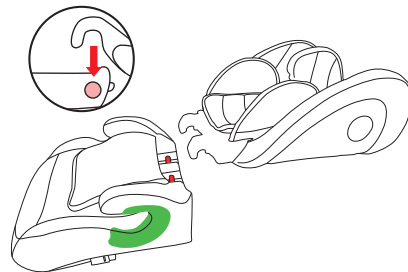
## Parts of the seat



1-Headrest    2-Backrest    3-Base    4-ISOFix    5-Headrest Adjuster

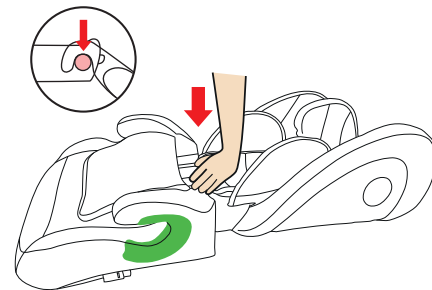
6-Belt Guides    7-ISOFix Button    8-Cup Holder    9-Detachable Side Cushions

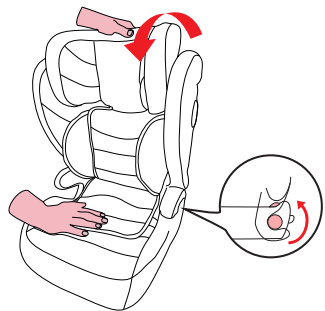
## Seat assembly



Align the base and backrest in a straight line on a flat surface.

Place the hooks inside the base and gently press down to ensure the hooks are connected to the base connection points.





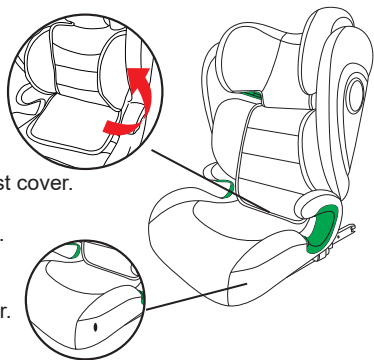
Lift the cover flap up and attach it to the velcro on the backrest, located underneath the backrest cover.

The backrest cover will now hang in-front of this.

To install the cup holder locate the slot on the side that will NOT be next to the vehicle door. Push the cup holder's peg through the slot and insert it into the groove.

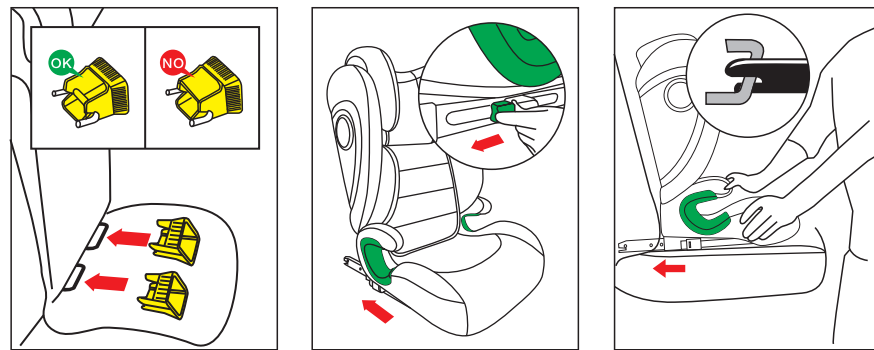
Gently keep pressure on the hooks to ensure they stay hooked to the base as you lift the backrest up. The backrest will "CLICK" into position.

**DO NOT FORCE AS THIS MAY CAUSE DAMAGE.**



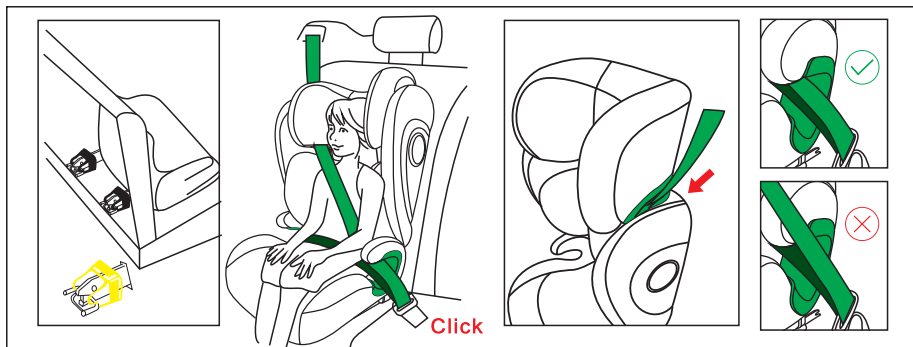
## Vehicle belt + ISOFIX installation

Applicable to vehicles equipped with an ISOFIX system that meets the requirements of ECE R14



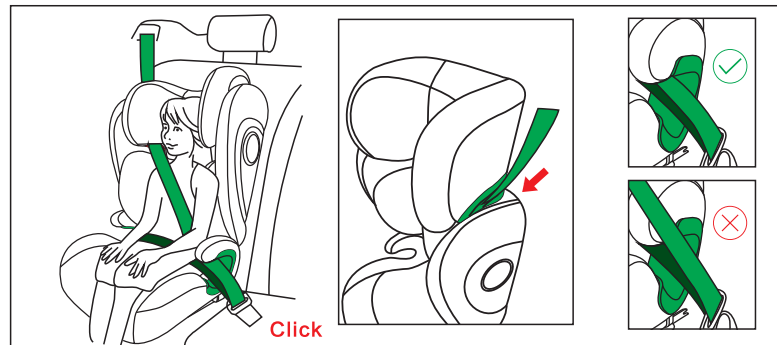
- 1). Find the ISOFIX anchor point on the vehicle, and clip the two guide sleeves on to the two ISOFIX anchor points of the car to aid installation (if needed).
- 2). Press and hold the ISOFIX unlock button while sliding outwards to fully extended the ISOFIX connectors on both sides of the child car seat.
- 3). Connect the ISOFIX connector of the child car seat to the ISOFIX anchor point of the vehicle until you hear a "click" sound. The indicators will turn green.
- 4). Push the child car seat back towards the vehicle seat until it's firmly pressed against the back of the vehicle seat.

## Using the three-point seat belt to secure children



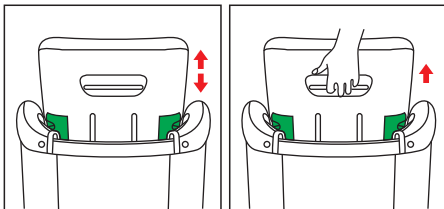
- 1). Adjust the length of the vehicle safety belt. The shoulder belt must pass through the guide hook on the headrest.
- 2). Let the child sit on the child car seat and adjust the height of the headrest according to the child's height.
- 3). Pull out the car's three-point safety belt, pass the belt over the child's shoulder and lap ensuring the waist belt passes through the guide grooves under the armrests. Click the vehicle seat belt to the vehicle buckle until you hear "click" sound, ensuring that the buckle is firmly locked.
- 4). Tighten the vehicle seat belt, adjusting the tightness according to the size of the child. Ensure the belt is not turned over or twisted. Please make sure that the position of the vehicle seat waist belt is as low as possible, so that the child's pelvis is engaged.

## Vehicle seat belt installation



- 1). Adjust the length of the vehicle safety belt. The shoulder belt must pass through the guide hook on the headrest.
- 2). Let the child sit on the child car seat and adjust the height of the headrest according to the child's height.
- 3). Pull out the car's three-point safety belt, pass the belt over the child's shoulder and lap ensuring the waist belt passes through the guide grooves under the armrests. Click the vehicle seat belt to the vehicle buckle until you hear "click" sound, ensuring that the buckle is firmly locked.
- 4). Tighten the vehicle seat belt, adjusting the tightness according to the size of the child. Ensure the belt is not turned over or twisted. Please make sure that the position of the vehicle seat waist belt is as low as possible, so that the child's pelvis is engaged.

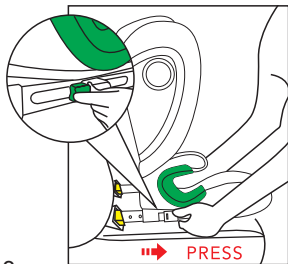
## Headrest adjustment



Pull up the handle of the seat headrest to adjust it up and down, release the handle to lock the head position.

**Note:** Please ensure that the seat headrest is locked after adjusting.

## Removing seat from vehicle



1). Press and hold the ISOFIX unlock switch and retract the connector into the base of the child car seat. (Tip; it might be easier to do one side at a time)

2). Pull the child car seat away from the vehicle seat to remove the child car seat.

## Maintenance and cleaning

### Daily maintenance

1. In daily use, check periodically the child seat. The child seat should be replaced after an accident.
2. Please keep this child seat in a dry and ventilated place to avoid damp and mold.
3. If the child seat becomes dusty, clean the seat belt and the plastic pieces by wiping them with a damp sponge and let it dry naturally.
4. For cleaning the entire child seat fabric cover, please refer to the washing instructions

### Washing instructions

Never use any solvent, chemical detergent or lubricant on any part of your child seat.



Hand wash,  
water temperature  
30°C or below



Do not use bleach



Do not tumble dry



Do not iron

### Removing and re-assembling the fabric cover

To remove the fabric cover of the child seat, de-construct the seat into its two parts and remove the covers starting from the back and working your way to the front. To install the fabric cover work from the front backwards ensuring the covers are tucked into the plastic. Use the fabric recover tool to help with this.