

AtomStack APP User Manual

Directory

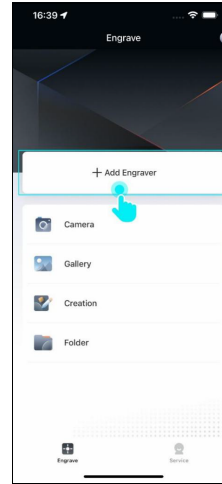
1. Software Download	01
2. Initial Device Adding/Network Setting	01
3. Devices Switching/Adding	04
4. Functional Description	05
5. Creation/ Engraving	05
6. Software updates	07
7. Firmware update	08
8. Add a camera	08
9. Search a camera in LAN	12
10. Video Recording	13
11. Camera Password Modification	14
12. Camera Reset	15

1. Software Download

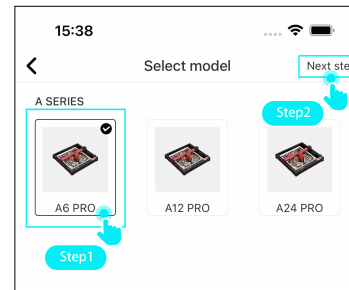
Scan the QR codes below with your mobile phone to install the app.

Andorid:

iOS:



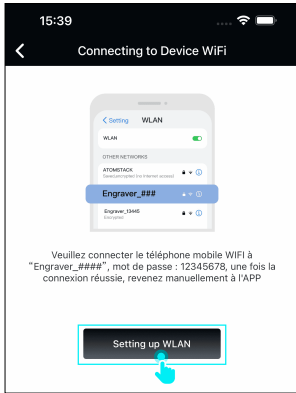
2. Select your device model then click "Next step".



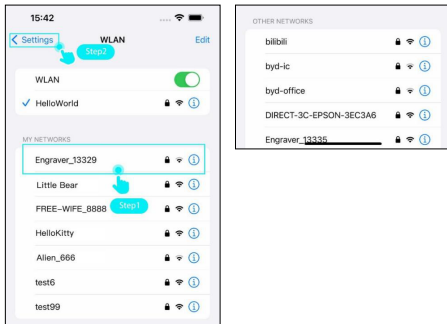
2. Initial Device Adding/Network Setting

1. Go to APP homepage, click "Add Engraver" button at the top to start device setup .

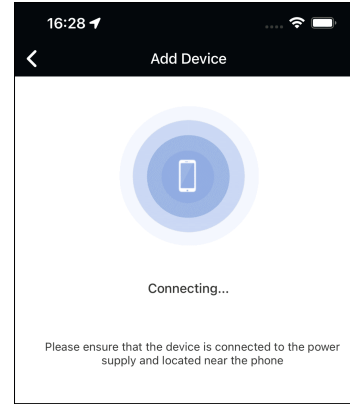
3. Please note down wifi name and password prompted on the page, and click "Setting up WLAN" button.



4. Select the engraver wifi name in WLAN page. After the engraver wifi is successfully connected, click the "Back" button in the upper left corner to return to APP homepage .



5. Appreciate your patience for the phone establishing a connection with the device, and try to keep the phone as close to the device as possible.

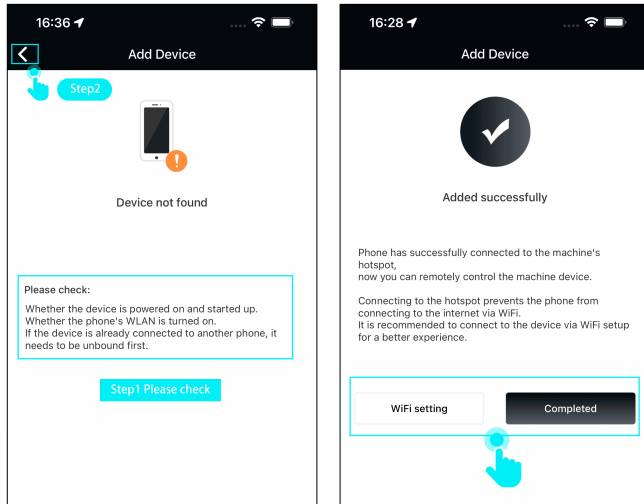


6. Please check the followings if the connection fails :

- Whether the device is powered on and started up.
- Whether the WLAN on your phone is enabled.
- If the device has been connected to another phone, you need to disconnect that phone's connection first.
- Turn off the mobile data on your phone.
- Please try restarting the device and try again.

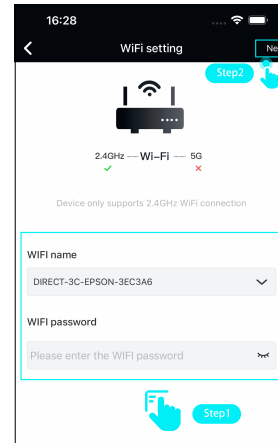
The prompted "Added successfully" means that your phone has successfully connected to the device, and now you can control the device remotely via your phone. If the device's working environment supports a WiFi network, we recommend setting the WiFi network for a better experience.

If you do not need WiFi setting, you can directly click the "Completed" button to return to the APP homepage. If you need to set the WiFi, click the "WiFi Setting" button, and the WiFi setting introduction is followed.



7. Click "WiFi setting", enter the correct WiFi name and password then click "Next" button.

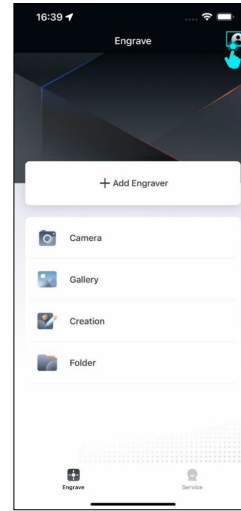
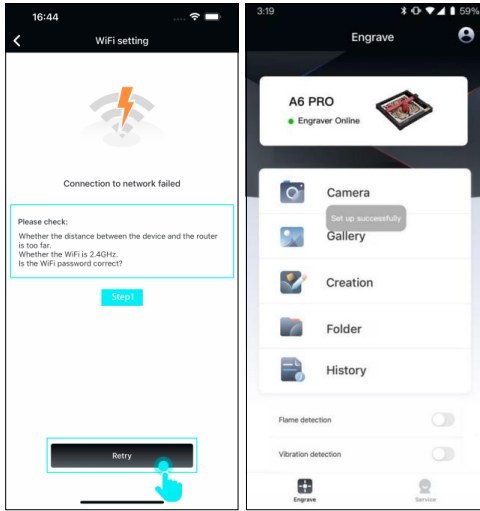
Note : WiFi setting only supports connections on the 2.4 GHz Wi-Fi band.



8.If it prompts "Connection to network failed", please check followings, click "Retry" button to redo WiFi setting.

- Check if the distance between the device and the router is too far.
- Check if the WiFi is operating on the 2.4GHz band.
- Check if the WiFi password is correct.

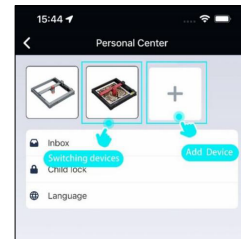
When WiFi setting is successful, it switches to APP homepage, and users can remotely control the device via WiFi from phones.



2.All previously added devices are displayed at the top, you can click on these device icons to switch between devices. Alternatively, click "+"button to add new devices.

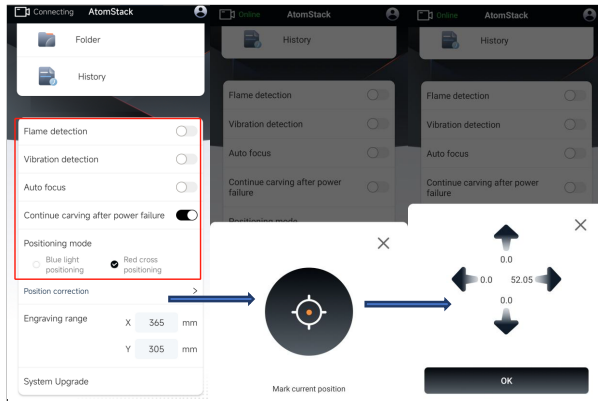
3.Devices Switching/Adding

1.If you need to replace a device that has been previously connected, you can click "Personal Center" button at the top right corner of APP homepage.



4.Functional Description

You can set up device functions on APP homepage after the device is connected. If your device does not support a particular function, that option will not be displayed on homepage. When your red cross laser is misaligned, you can use 'Position correction' function in list to calibrate the red cross positioning.

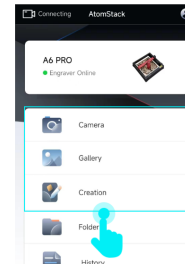


- **Flame detection:** When enabled, it triggers when a fire occurs directly below the laser. Laser module automatically returns to the origin, and buzzer sounds. Machine resumes to work after restarting. (If supported)
- **Auto-focus:** After enabling, the machine will automatically focus before engraving, and then engrave after focusing. (If supported)
- **Tilt detection:** When enabled, it triggers when the angle between the machine and the horizontal plane is between 15° and 20°. Machine automatically stops working, and buzzer sounds. Click "confirm" on display screen to dismiss the alert. (If supported)

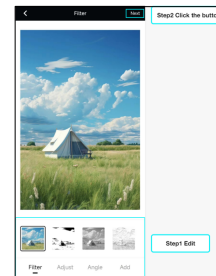
- **Resume Engraving upon Power Failure Recovery:** When enabled, if machine stops due to a power outage during engraving, the unfinished engraving work can be continued after reconnecting the machine. (If supported)

5.Creation/ Engraving

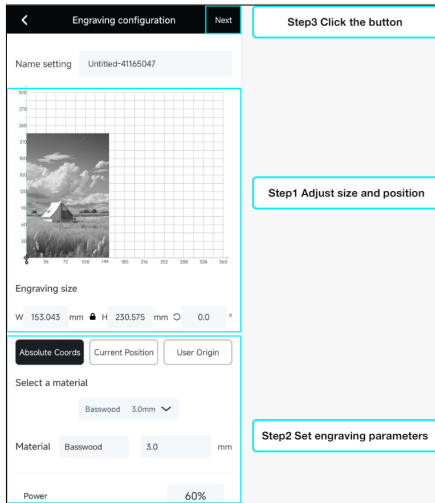
1.You can create your engraving works by Photoing/Importing album pictures/Starting from scratch in APP homepage.



2.In the creation page, you can add filters, adjust colors, and rotate images. You can also add text, materials, and barcodes to the workspace, click "Next" button in the upper right corner of the page after creation is completed.



3. In engraving configuration page, you can set dimension, position, materials, engraving parameters, etc. click "Next" button in the upper right corner of the page after configuration is completed (Attention: U disk or TK card needs to be inserted to device before engraving.)



Starting Position:

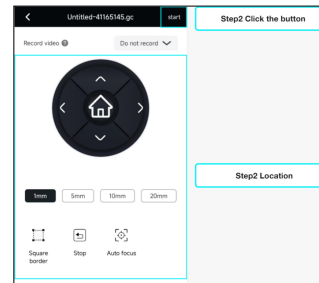
- **Absolute Coordinates:** Engrave based on the object's coordinates on the workspace, corresponding to the coordinates on the material.
- **Current Position:** Engrave based on the current coordinates of the laser as the starting position.
- **User Origin:** Engrave based on the user-set origin coordinates as the starting position.

Material Selection:

You can automatically load preset engraving parameters by selecting official preset materials.

- **Power:** Engraving power used for this layer.
- **Speed:** Engraving speed used for this layer.
- **Air Assist:** Enable air assist (if supported).
- **Passes:** Number of repetitions for engraving on this layer.
- **Cutting Start Z-axis Down Distance:** The distance the laser Z-axis descends before cutting begins (if supported).
- **Z-axis Down Distance After Each Cut:** The distance the laser Z-axis descends after each cut (if supported).
- **Line Interval:** The spacing between consecutive lines when engraving with the laser.
- **Engraving Direction:** Set the engraving direction for bitmap engraving, with options for "Horizontal" and "Vertical".
- **Bidirectional Engraving:** Set the engraving mode for bitmap engraving, with "Bidirectional" for higher efficiency but lower quality, and "Unidirectional" for lower efficiency but better quality.

4. In the move page, you can control laser to move along the X/Y axis, set the origin, frame, and fire. When ready, click "Start" to engrave.



Rectangle Border: Laser will move along the rectangular boundary of the pattern on the material so that you can preview the engraving area.

Stop: Forcefully stop any movement of the laser.

Set Start from: Set laser to start engraving from the current coordinates of the laser.

Move to Start Point: Move laser to the user-defined starting point.

Set as Center: Set the current coordinates of laser as the engraving center.

Move to Center: Move laser to the user-defined center point.

Distance: Distance of the laser's movement on X/Y axis .

Fire: Test the laser output at different power levels.

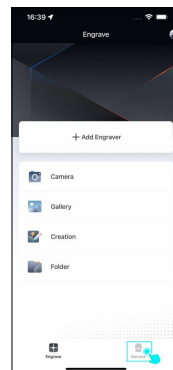
Focus: Auto focus laser on Z-axis. (If supported)

5.Go to engraving page, you can adjust the current engraving power/-speed in real time, or pause/stop the current engraving project. It prompts finish on page after project is completed .

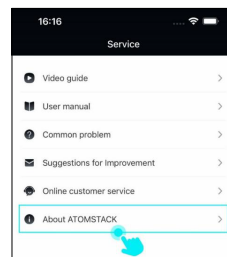


6. Software update

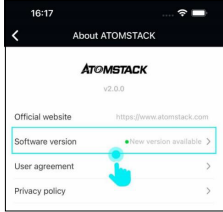
1. Click the "Service" button at the bottom right corner of APP homepage.



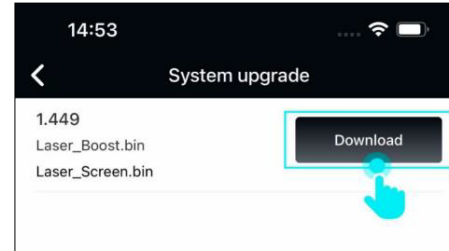
2.Click " About ATOMSTACK" button.



3. Click "Software Version" to check if current software version is the latest one, you will be prompted to update the software if there is a new version available.

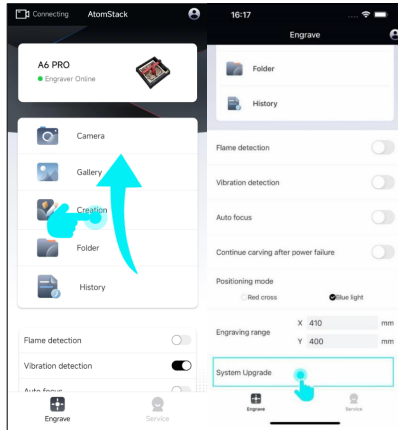


2. If the system detects a new firmware version which can be updated, the firmware version information displayed is list, click "Download" button to update the firmware.



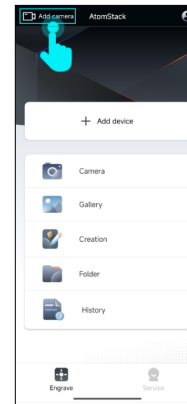
7. Firmware update

1. After the device is added successfully, drag upward on the APP homepage and click the "System Update" button at bottom of the list.

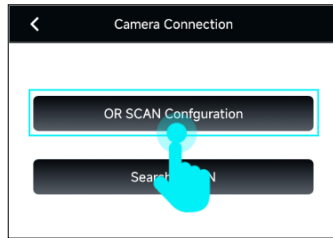


8. Add a camera

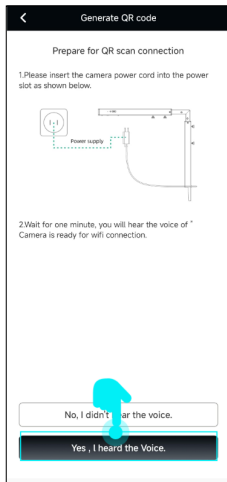
1. Go to APP homepage, click "Add camera" button in the upper left corner to start adding a camera.



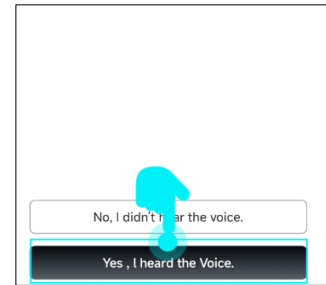
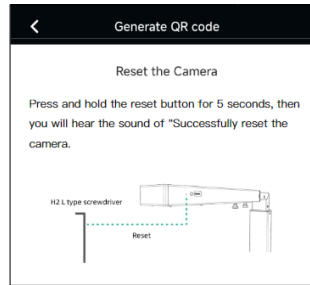
2. Click "QR SCAN Configuration" on Camera Connection page.



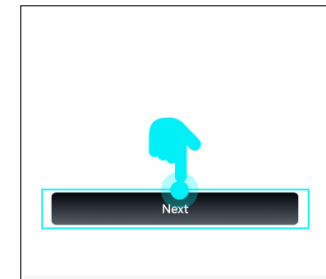
3. Connect the camera power cord to the power slot and wait for one minute. You will hear the voice of "Camera is ready for WiFi connection", click "Yes, I heard the Voice".



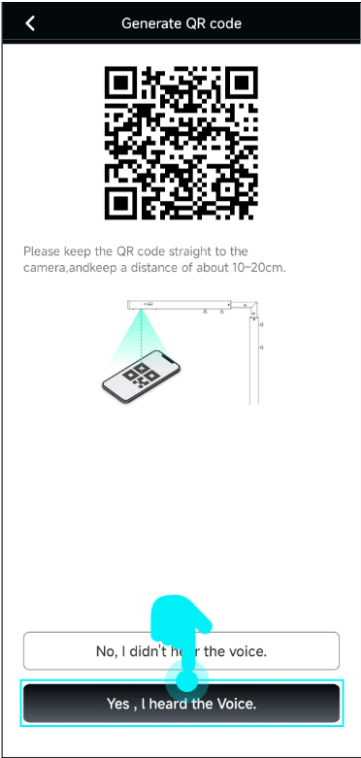
If you don't hear the voice of "Camera is ready for WiFi connection", you need to follow the prompts to reset the camera till you hear the voice of "Successfully reset the camera.", click "Yes, I heard the Voice" button to redo the camera addition steps.



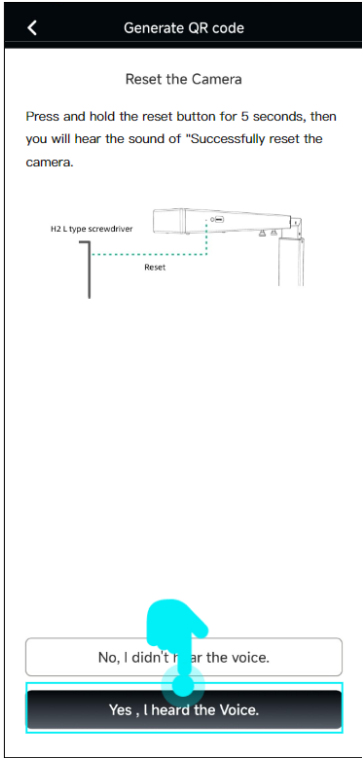
4. Fill in WiFi name and password and click "Next" on WiFi setting page.



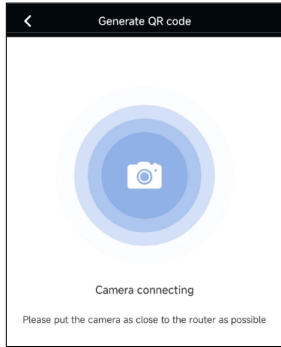
5. Align the QR code generated on your phone to the camera and keep it at a distance of about 10-20cm. Then you will hear a beep sound, click "Yes, I heard the Voice".



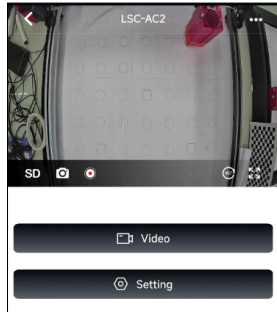
If you don't hear the beep sound, you need to follow the prompts to reset the camera till you hear the voice of "Successfully reset the camera.", click "Yes, I heard the Voice" button to redo the camera addition steps.



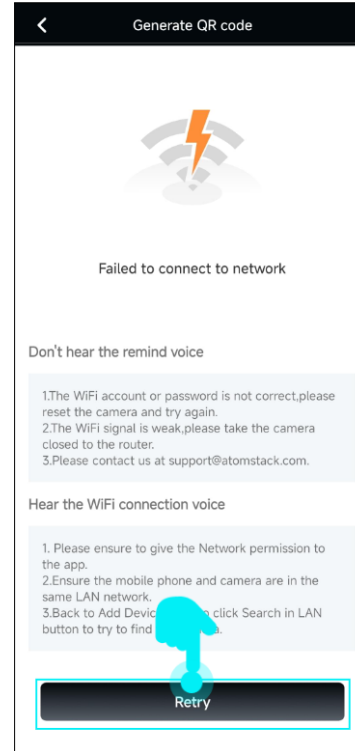
6. Please place the camera as close as possible to the router and wait for the WiFi configuration result.



7. WiFi configuration is successful, page switches to camera setting, now you can fully use various functions.

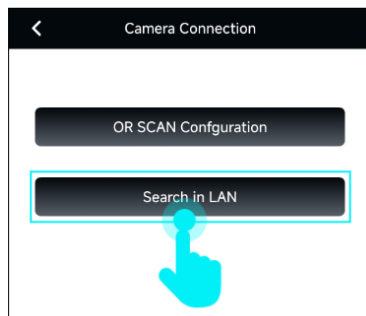


If the WiFi configuration fails, you need to troubleshoot as per the checklist prompted, click "Retry" button below to redo WiFi setting after completing troubleshooting.

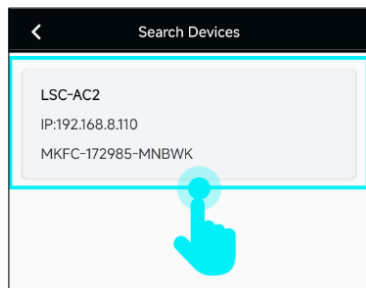


9. Search a camera in LAN

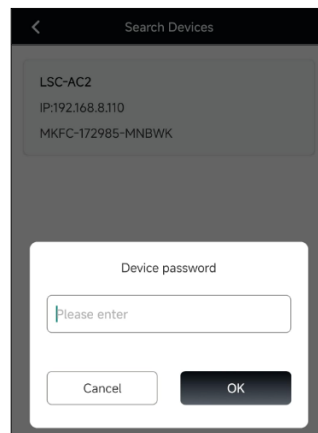
1. After a camera is added through WiFi setting, other phones can add it by searching this camera in LAN. Click "Search in LAN" on Camera Connection page.



2. Go to "Search Devices" page, click the camera information block in list.

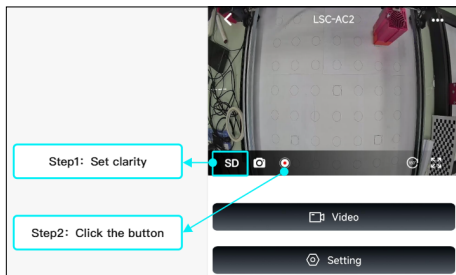


3. The interface will pop up a camera password input box, fill it with correct password (the default password is "admin"), you can complete the camera connection.

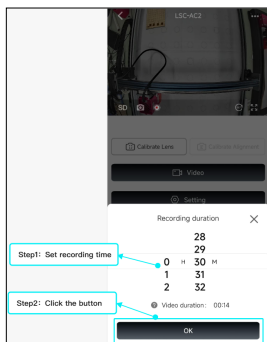


10.Video Recording

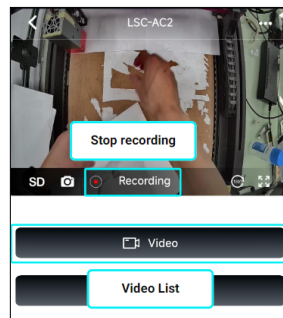
1.On camera homepage, you can switch camera video clarity by clicking the SD/HD button, SD represents standard-definition video and HD represents high-definition video. Click video recording icon on the page to start video recording.



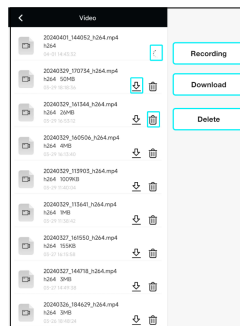
2.Firstly, you can set the duration of this video recording, and clicking "OK" button to finish setting.



3.You can click the recording icon again to stop current video recording during the recording. Click "Video" button on the page to go to video list if you would like to check the video just recorded.

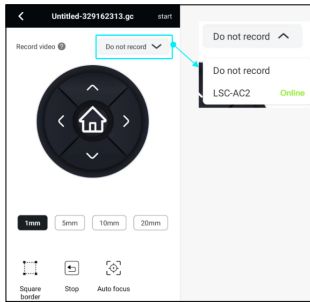


4.You can view all recorded/in progress videos and download/delete them in video list.

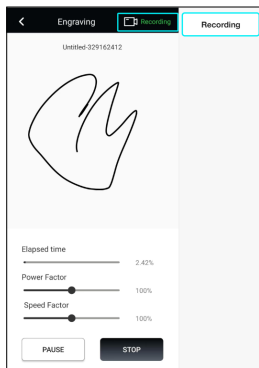


11. Change camera password

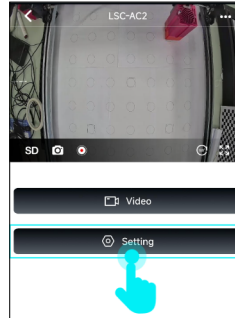
5. Apart from camera homepage, also you can click "Record video" at top of move page and select the needed camera to record engraving process.



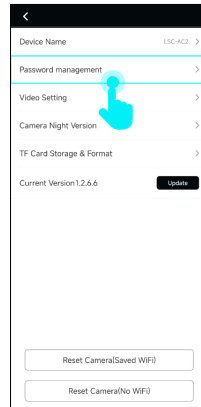
6. Select the camera to start engraving, the camera automatically records the entire carving process until it is completed.



1. Click "Setting" button on the camera homepage to change password.



2. Click "Password management" button on page.



3. On password management page, set a new password for camera firstly, then click "Save" button to save the new password.

The screenshot shows the 'Password management' screen. At the top, there is a back arrow, the title 'Password management', and a 'Save' button. Below the title, there are two text input fields: 'New Password' with a hint 'The new password must not be less th...' and 'Confirm the new password' with a hint 'Fill in the password again'. To the right of the input fields, there are two buttons: 'Step2: Save' at the top and 'Step1: Set password' below it.

12. Camera Reset

You can reset the camera on camera page by selecting "Reset Camera (Saved WiFi)" or "Reset Camera (No WiFi)" options.

- **Reset Camera (Saved WiFi):** This option resets the camera but retains the WiFi configuration data. After the camera restarts, the mobile phone can continue to connect to the camera, and the camera settings return to their default values.
- **Reset Camera (No WiFi):** This option resets the camera and deletes the WiFi configuration data. After the camera restarts, the mobile phone will need to re-add the camera, and the camera settings will return to their default values.

The screenshot shows the camera settings page. At the top, there is a back arrow and a list of settings: 'Device Name' (LSC-AC2), 'Password management', 'Video Setting', 'Camera Night Version', and 'TF Card Storage & Format'. Below these settings is the 'Current Version 1.2.6.6' with an 'Update' button. At the bottom of the page, there are three buttons: 'Reset Camera(Saved WiFi)', 'Reset Camera(No WiFi)', and 'Reset Camera'.

AtomStack 软件说明书

目录

1. 软件下载	01
2. 首次添加设备/设备配网	01
3. 更换/添加设备	04
4. 机器功能介绍	05
5. 创作与雕刻	05
6. 软件更新	07
7. 固件更新	08
8. 添加相机	08
9. 局域网搜索相机	12
10. 录制视频	13
11. 修改相机密码	14
12. 重置相机	15

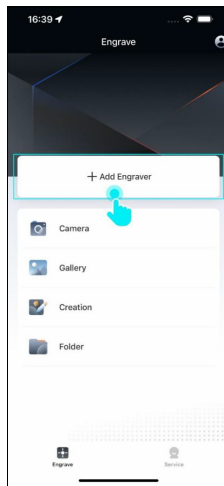
1.软件下载

您可以通过手机扫描以下二维码下载APP。

Andorid:



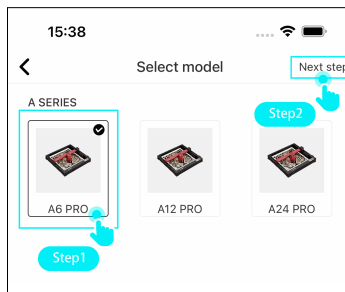
iOS:



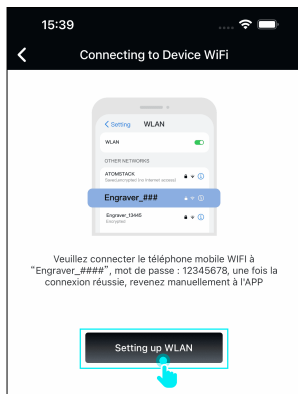
2.在界面中选择您需要添加机型，然后点击“下一步”。

2.首次添加设备/设备配网

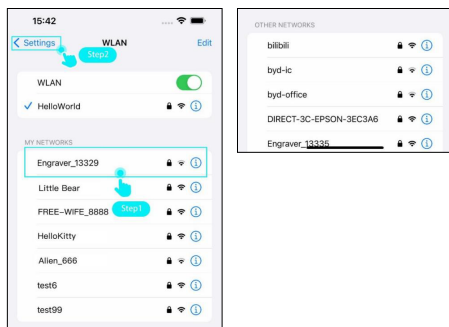
1.进入APP主界面后，您可以点击上方的“添加设备”按钮，进入添加设备的流程。



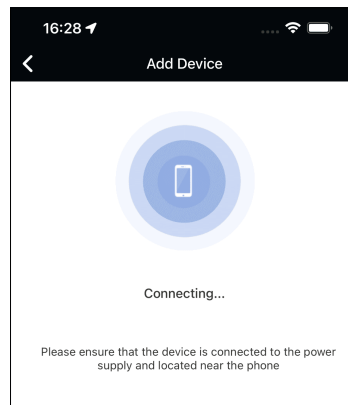
3. 请记录界面提示设备热点名字与密码，初始密码：12345678，然后点击“设置WLAN”按钮。



4. 在手机系统WLAN选择界面中，选择设备热点名称。设备热点连接成功后，点击左上角的返回按钮，返回APP。



5. 请耐心等待手机与设备建立连接，并尽量让手机靠近设备。

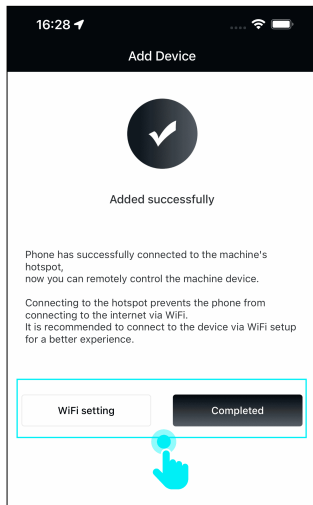
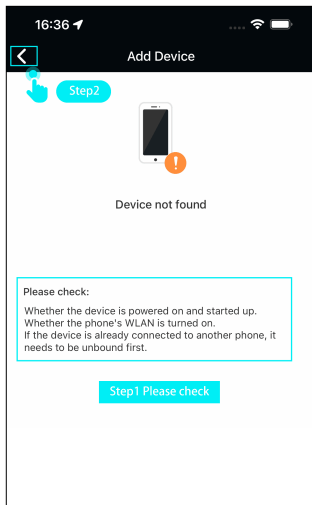


6. 如连接失败，请检查：

- 设备是否接通电源并开机启动
- 手机WLAN是否已开启
- 若设备已被其他手机连接，需要先断开该手机连接
- 关闭手机移动网络
- 请尝试重启设备后再试

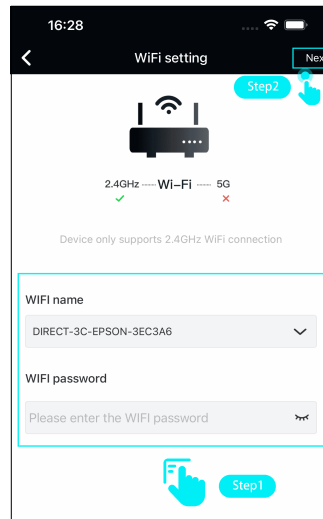
如提示添加成功，则表示手机已成功与设备建立连接，现在您可以通过手机远程控制设备。如果设备工作环境支持WiFi网络，我们建议您进行WiFi网络配置，以获得更好的体验。

如不进行WiFi配置则可以直接点击“完成”按钮返回APP主界面。如需要进行WiFi配置，则点击界面中“WiFi设置”按钮，后面继续介绍WiFi配置流程。



7. 进入Wifi配置界面后，您需要正确输入需配置WiFi名称与密码，然后点击“下一步”按钮。

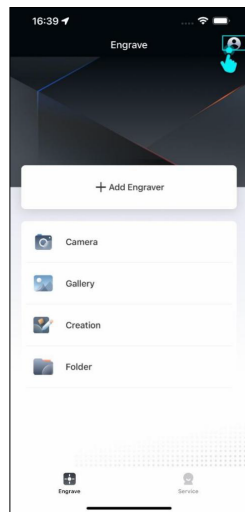
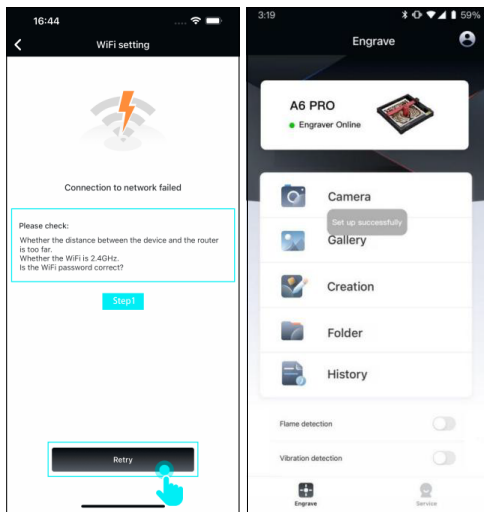
注意：WIFI配置仅支持2.4 GHz WiFi频段连接。



8. 如果界面提示无法连接到网络，请进行以下检查。检查完成后，点击“重试”按钮，重新进行WIFI配置。

- 设备与路由器的距离是否过远
- WiFi是否为2.4GHz
- WiFi密码是否正确

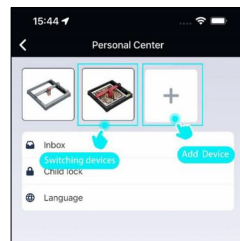
如果WIFI配置成功，界面切换到APP主页，用户手机可以通过WiFi方式连接设备进行远程控制。



3. 更换/添加设备

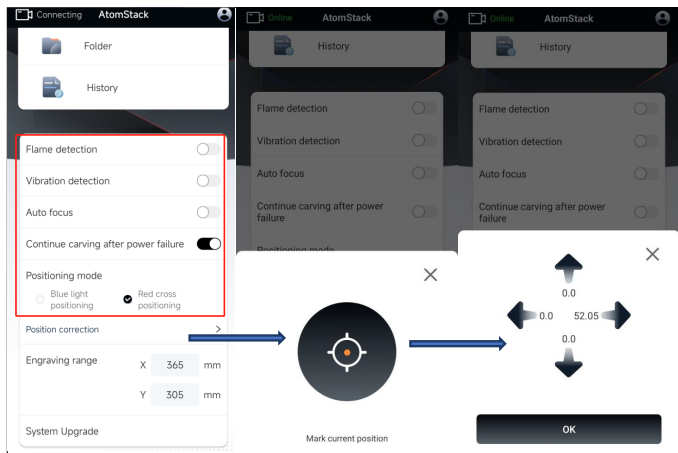
1. 如您需要更换已连接过的设备，则可以点击主界面右上角的“个人中心”按钮。

2. 界面顶部显示所有已添加过的设备，您可以点击这些设备图标进行设备切换。或点击“+”按钮进行新设备添加。



4. 机器功能介绍

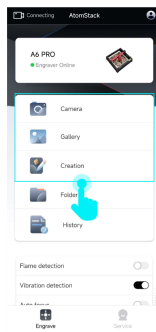
连接设备后，您可通过APP主页设置设备功能，如果您的设备不支持该功能，则界面不会显示该选项。当您的红十字激光出现偏移时，可以通过列表中“定位校准”功能，对红十字激光位置进行校准。



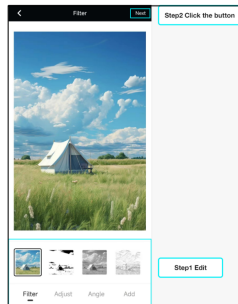
- **火焰检测**：启用后，当激光器正下方发生火灾时触发该功能，激光模块自动返回原点，蜂鸣器鸣响。重启机器后即可正常使用。（如果支持）
- **自动对焦**：启用后，进行雕刻前机器会自动进行对焦，对焦完毕后再进行雕刻（如果支持）。
- **倾斜检测**：启用后，当机器与水平平面之间的角度 15° - 20° 时，该功能被触发机器自动停止工作，蜂鸣器鸣响。点击设备屏幕上的“确定”解除警报（如果支持）。
- **断电续雕**：启用后，当机器雕刻过程中断电停止，重新连接机器后可继续未完成雕刻工作（如果支持）。

5. 创作与雕刻

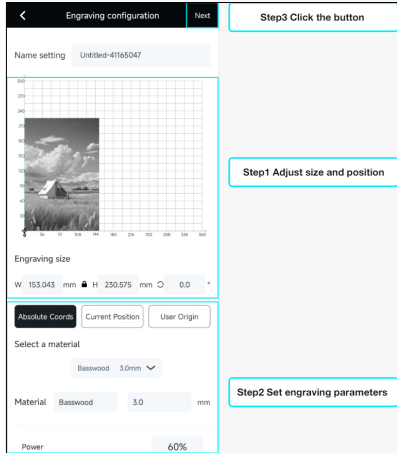
1. 在APP主页，您可以通过拍照、上传相册图片、从零开始创作您的雕刻作品。



2. 在创作界面中，您可以对图片进行滤镜添加、色彩调节、角度调整，也可以在画布中添加文字、素材、条形码。完成设计后，点击界面右上方的“下一步”按钮。



3.在雕刻设置界面中，您可以设置雕刻对象的尺寸、位置、使用的材料、雕刻参数等。完成雕刻设置后，点击界面右上方的“下一步”（注意：设备需要插入U盘或TK卡才能进行雕刻）。



开始位置

- **绝对坐标：**按照对象在画布中坐标位置，在材料上对应坐标进行雕刻。
- **当前位置：**以激光器当前坐标位置作为雕刻开始位置进行雕刻。
- **用户原点：**以用户设定原点坐标位置作为雕刻开始位置进行雕刻。

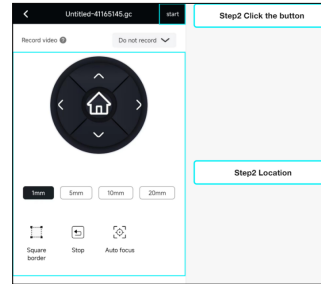
选择材质

您可以通过选择官方预设材质，自动载入预设雕刻参数。

- **功率：**该层使用雕刻功率。
- **速度：**该层使用雕刻速度。
- **空气辅助：**启用气体辅助（如果支持）。
- **加工次数：**此层重复雕刻次数。

- **开始切割Z轴下沉距离：**切割开始前，激光器Z轴下沉距离（如果支持）。
- **每次切割Z轴下沉距离：**每遍切割后，激光器Z轴下降距离（如果支持）。
- **线条间隔：**激光器雕刻连续线之间的间距。
- **雕刻方向：**设定位图雕刻方向，分为“水平”“垂直”两种。
- **双向雕刻：**设定位图雕刻模式，双向雕刻-雕刻效率高，单向雕刻-雕刻效率低但效果更好。

4. 在移动界面中您可以操作激光器进行XY轴移动、设定原点、巡边、点火，准备就绪后点击“开始”按钮进行雕刻。



巡边：激光器将沿着材料上加工图案的矩形边界进行移动，以便您可以预览雕刻区域。

停止：强制停止激光器任何运动。

设置起始点：以激光器当前位置坐标设定雕刻对象开始雕刻位置。

移动到起始点：将激光器移动至用户设定起始点位置。

设为中心：以激光器当前位置坐标设定雕刻对象雕刻中心点。

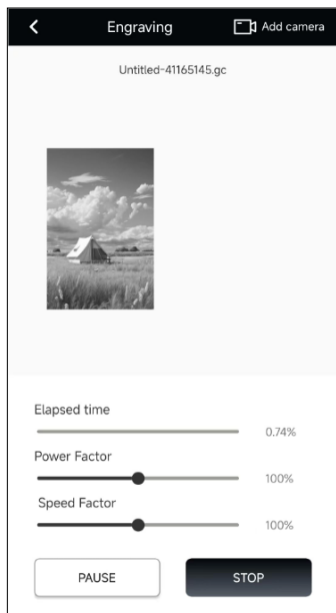
移动至中心点：将激光器移动至用户设定中心点位置。

距离：激光器XY轴移动距离。

点火：激光器不同功率下出光测试。

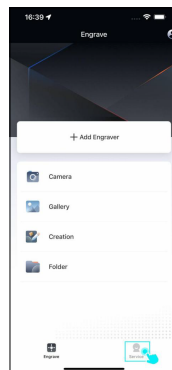
对焦：激光模组按照与雕刻材料最佳焦距，进行Z轴自动对焦（如果支持）。

5. 进入雕刻界面后，可以实时调整当前雕刻功率/速度，也可以暂停/停止当前雕刻项目。项目雕刻完成后，界面会弹出雕刻完毕提示窗口。

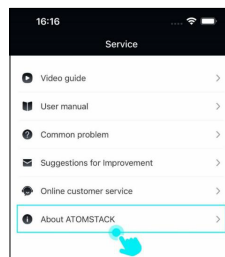


6. 软件更新

1. 在APP主页点击右下角的“服务”按钮。



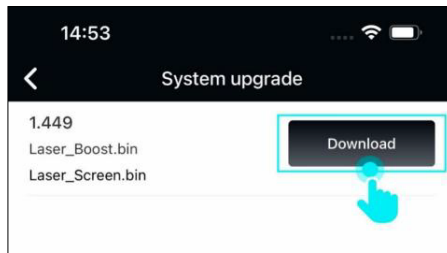
2. 在服务界面中点击“关于ATOMSTACK”按钮。



3.点击“软件版本”按钮，系统检查当前软件版本是否为最新，如有最新版本则会提示您进行软件版本更新。

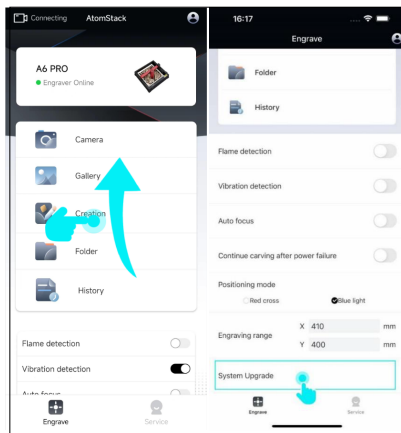


2.如系统检测到设备有可更新的固件，则列表内显示固件版本信息，点击“下载”按钮即可进入固件更新流程。



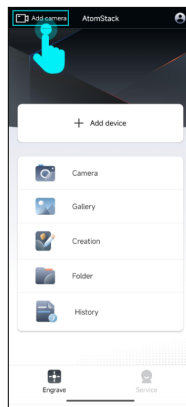
7.固件更新

1.添加设备后，在APP主页向上拖动，然后在列表底部点击“固件更新”按钮。

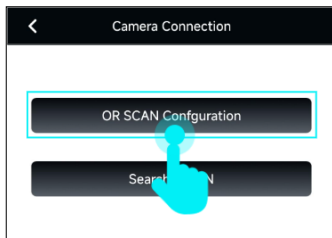


8.添加相机

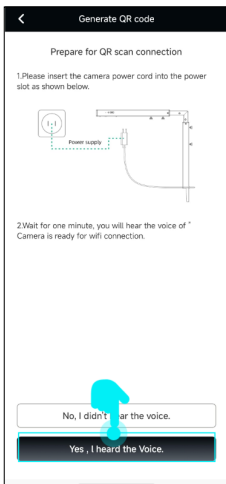
1.进入APP主页后，您可以通过点击左上方“添加相机”按钮，进入相机添加流程。



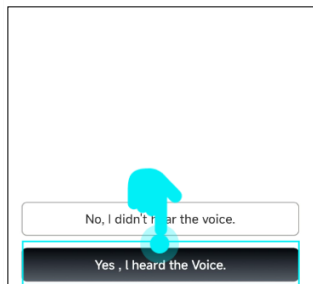
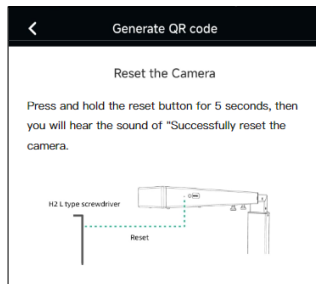
2.在相机连接页面中，点击“QR扫码配置”按钮。



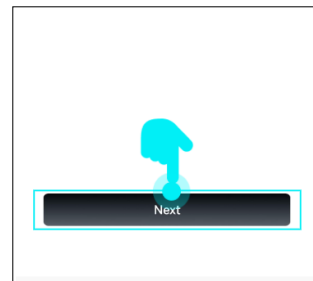
3.将相机电源线接入电源插槽，等待一分钟，您会听到“Camera is ready for WiFi connection”的声音，听到声音后，点击“是的，我听到了那个声音。”



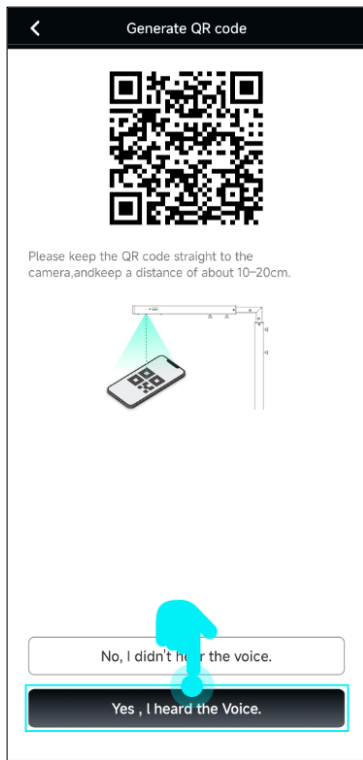
如果您没有听到“Camera is ready for WiFi connection”的声音，则需要按照界面指示进行相机重置，并在听到声音“Successfully reset the camera.”后，点击“是的，我听到了那个声音”按钮重新进行相机添加步骤。



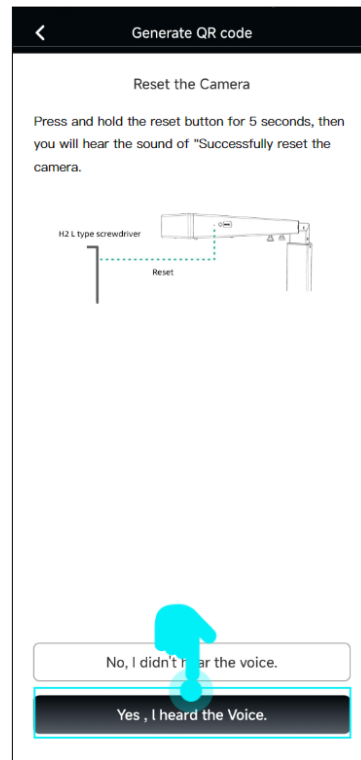
4.在WiFi配置页面中，填写相机需要配置Wifi名称与密码，然后点击“下一步”按钮。



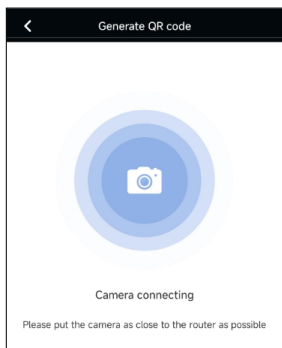
5. 将手机上生成二维码对准相机，并保持在10~20cm左右的距离，随后您会听到“嘟嘟”提示声音。听到声音后，点击“是的，我听到了那个声音。”



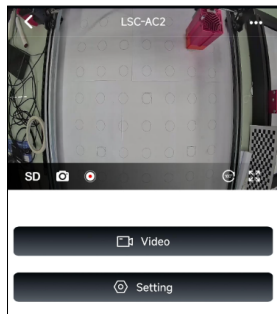
如您没有听到“嘟嘟”提示声音，则需要按照界面指示进行相机重置，并在听到声音“Successfully reset the camera.”后，点击“是的，我听到了那个声音”按钮重新进行相机添加步骤。



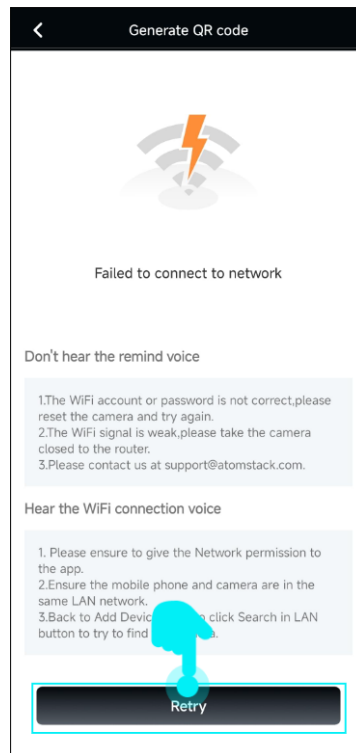
6.将相机尽量靠近路由器并等待Wifi配置结果。



7. Wifi配置成功，界面跳转至相机管理界面，现在您可以尽情享受相机提供各项功能。

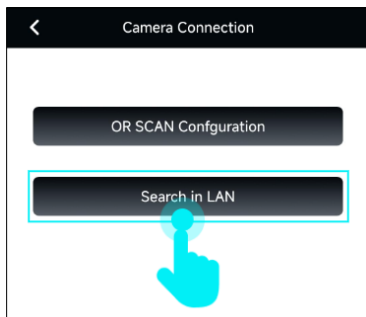


如Wifi配置失败，则需要根据界面上列出原因进行排查，完成问题排查后，点击下方“Retry”按钮重新进行Wifi配置设置。

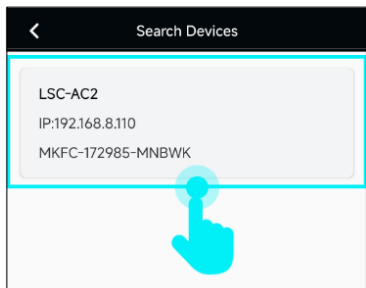


9.局域网搜索相机

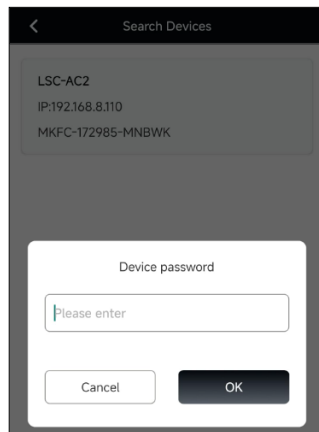
1.当相机通过Wifi配置完成添加后，其他手机可通过“局域网搜索相机”方式，进行相机添加。在相机连接界面中，点击“局域网搜索”。



2.进入“寻找设备”界面后，点击列表中“相机”信息卡片。

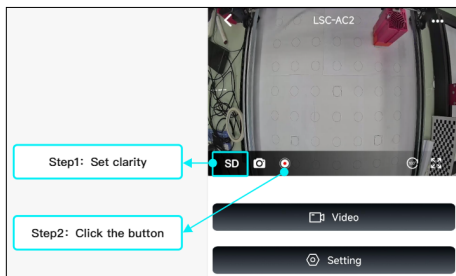


3.界面弹出相机密码输入框，通过输入框填写正确相机密码后（相机默认密码：admin），即可完成相机连接。

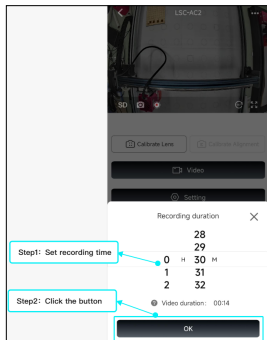


10. 录制视频

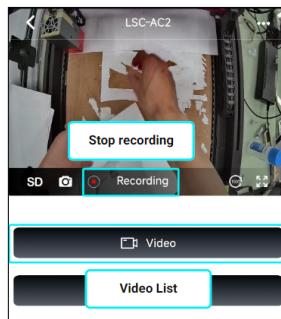
1. 在相机首页，您可以通过点击SD/HD按钮切换相机视频清晰度，SD-标清视频，HD-高清视频。点击界面上视频录制按钮，可进行视频录制。



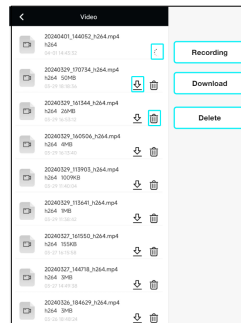
2. 首先你可以设定本次录制视频时长，然后通过点击“确定”按钮完成设定。



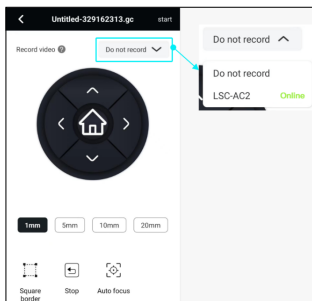
3. 视频录制过程中，您可以再次点击录制按钮，停止当前视频录制。如您需要查看刚刚录制视频，则可点击主界面上“视频”按钮进入视频列表界面。



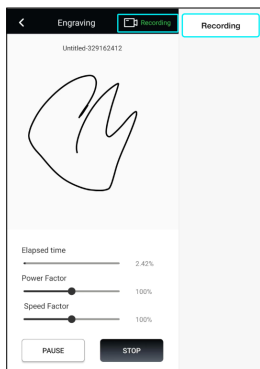
4. 在视频列表界面中，您可以查看所有录制中/已录制的视频，并可对视频进行下载、删除操作。



5.除了在相机主页，您还可以在雕刻控制界面中，点击界面上方“录制视频”，选择需要对雕刻过程进行录制相机。

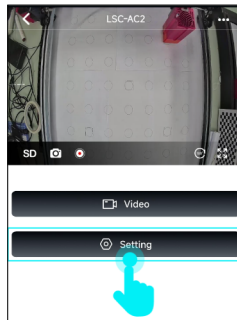


6.选择相机后开始雕刻工作，相机自动对雕刻全过程进行录制，直至雕刻结束。

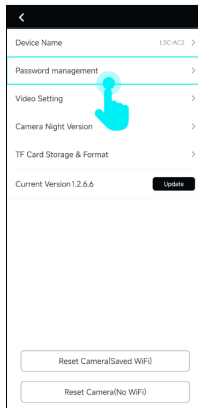


11.修改相机密码

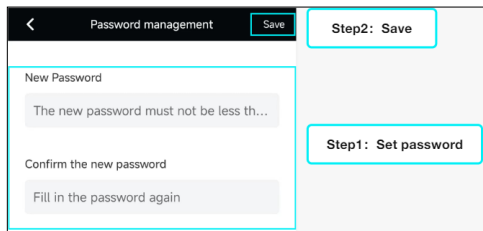
1.如需修改相机密码，可在相机主页点击“设置”按钮。



2.在设置界面中，点击“密码管理”按钮。



3.在密码管理界面中，首先设置相机新密码，然后点击“保存”按钮进行相机密码保存。



12.重置相机

您可以通过相机设置界面中“重置相机（保留WiFi）”或“重置相机（删除WiFi）”进行相机重置。

- 重置相机（保留WiFi）：重置相机但保留WiFi配置数据，相机重启后手机能继续与相机保持连接，相机各项参数返回默认值。
- 重置相机（删除WiFi）：重置相机且删除WiFi配置数据，相机重启后手机需要重新进行相机添加，相机各项参数返回默认值。

