

Ash Leslie

*The sky's lullaby*

24 Jan – 4 Feb 2024

Ash Leslie

## *The sky's lullaby*

Saint Cloche's first exhibition of 2024 delves into environmental themes, particularly focusing on the real and imagined landscape.

The inspiration comes from Australian artist Ash Leslie's experience working outdoors, closely attuned to changing weather and elements. The sky becomes a separate identity, symbolising a maternal figure powerlessly observing the world's trials and tribulations, with her changing temperament embodied in the changing hues and thoughts moving through the clouds. This current body of work includes exploration of new mediums such as poetry and installation art.

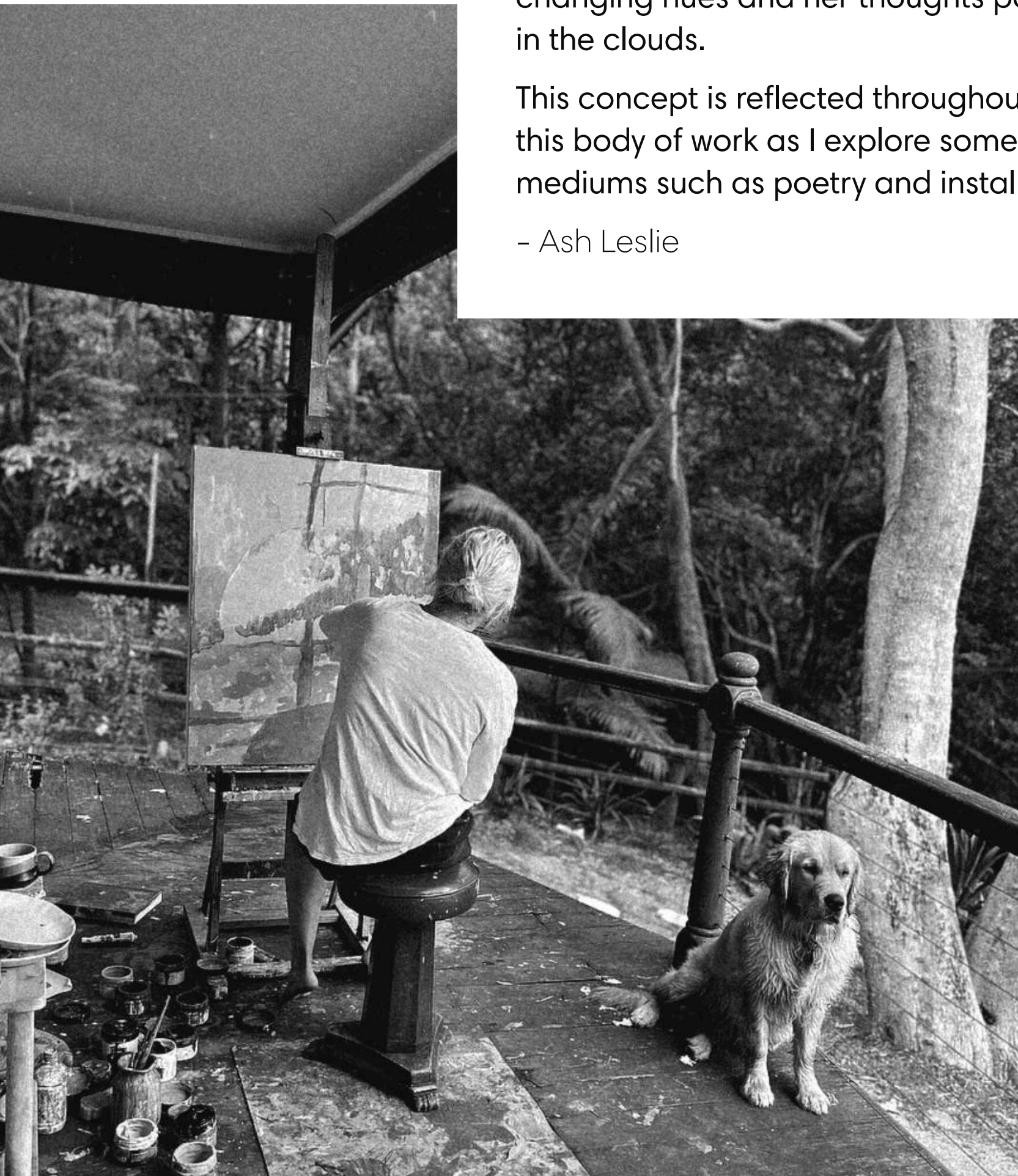
“

Over the past months I have been working outdoors on my veranda surrounded by the ever-changing weather. Becoming much more in-tune with the elements I found that they informed how I worked throughout the course of the day.

The idea of the sky as a separate identity within my practice started to take shape. I imagined a maternal figure looking down on us, a helpless bystander to the world's joy and pain. Her moods reflected in the changing hues and her thoughts passing by in the clouds.

This concept is reflected throughout this body of work as I explore some new mediums such as poetry and installation art.

- Ash Leslie

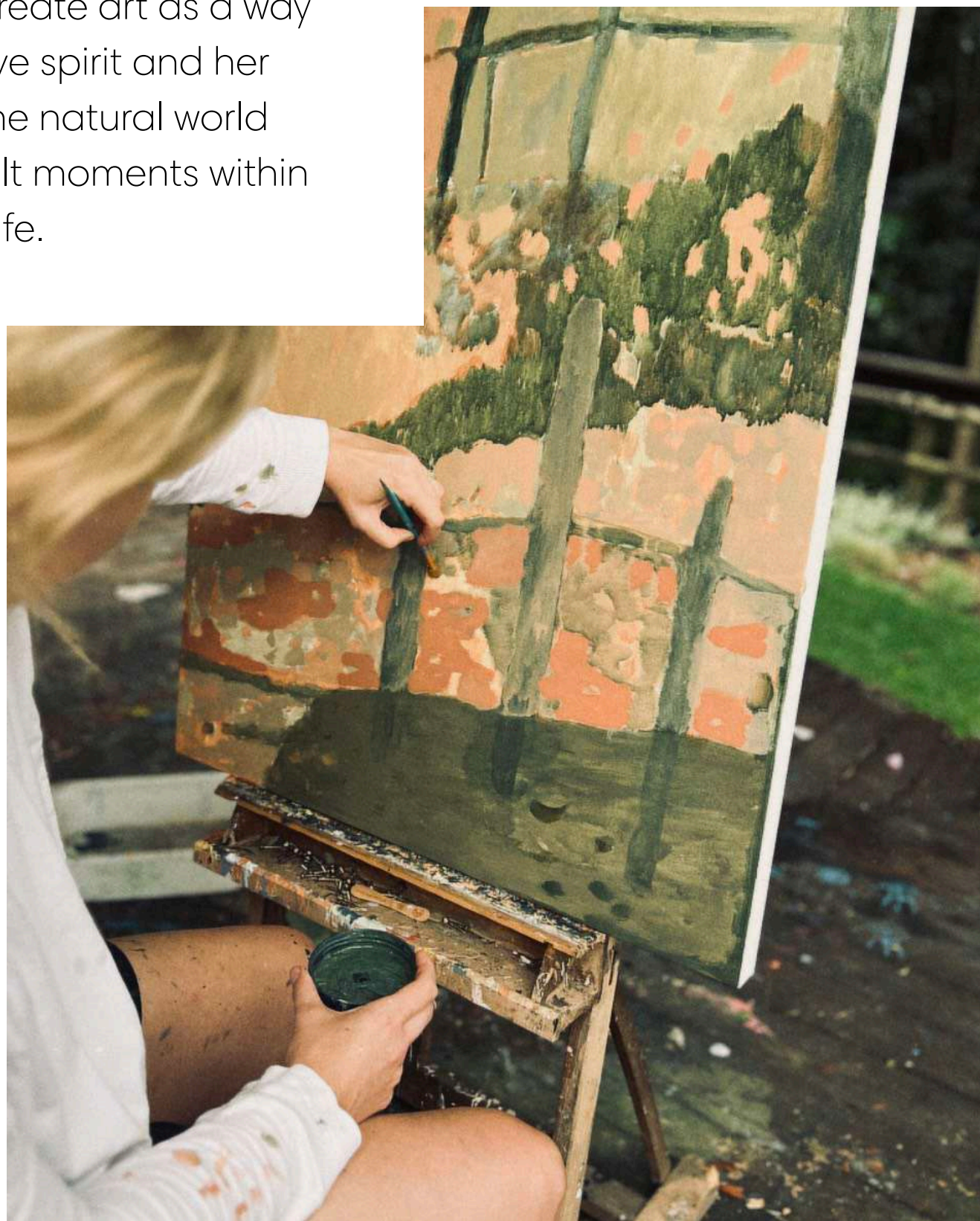




## About Ash Leslie

Ash Leslie is an abstract artist based on Sydney's South Coast. An intuitive self-taught painter, Ash trained as a graphic designer but transitioned to focus on her childhood passion for Visual Arts several years ago. Characterised by a multi-layered painting style, Ash's works explore spontaneity and balance within each composition. The result she hopes for, is to grant the viewer a sense of interest and intrigue through the portal of each painting.

Ash's work is driven by a deep, fundamental need to create art as a way of honouring her creative spirit and her greatest inspiration is the natural world around her and heartfelt moments within the journey of her own life.

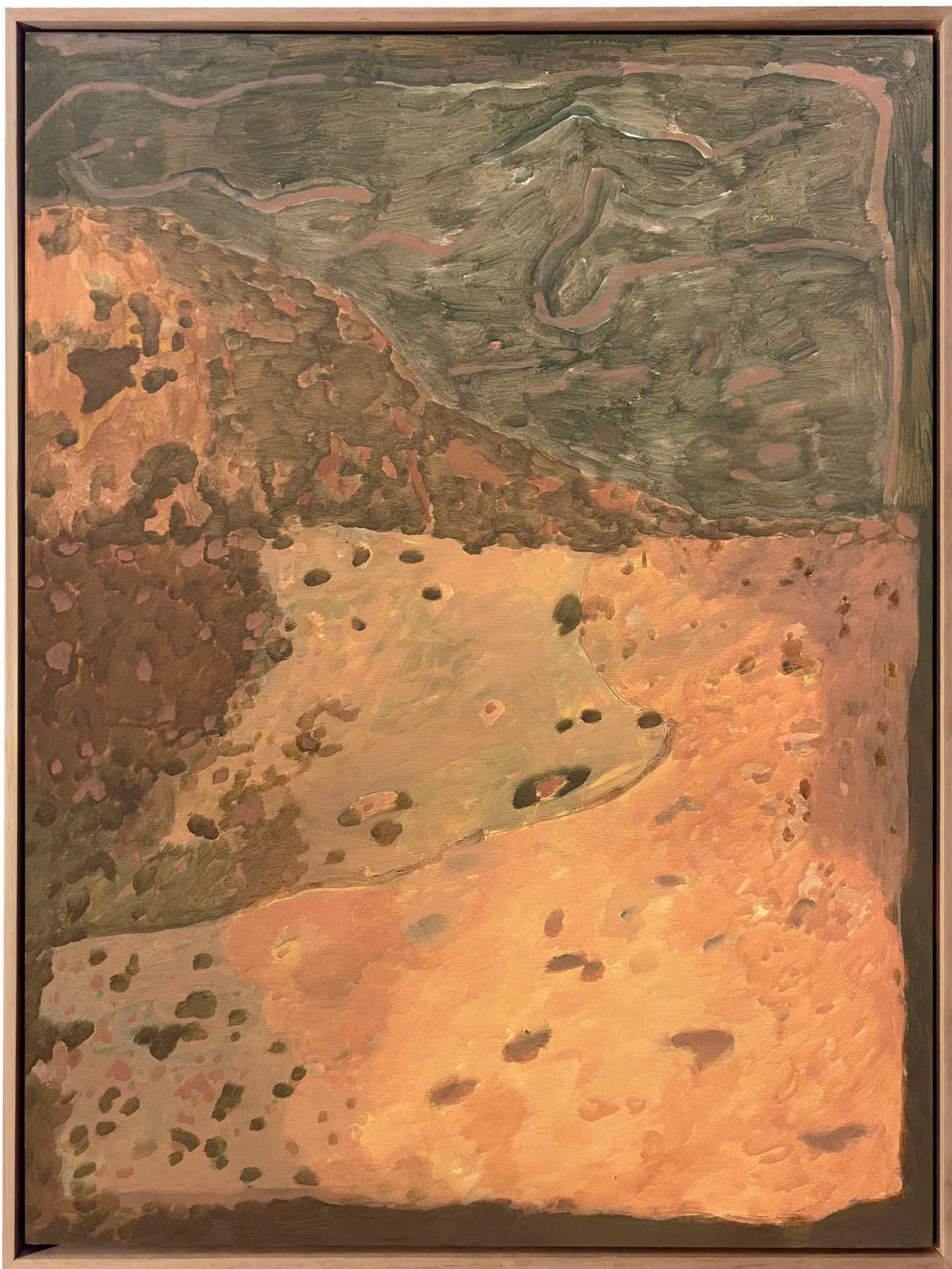




Most recently, Ash has received The Paddington Art Prize Award and in February 2023, she was invited on an artist residency by the Nock Art Foundation at their Queenstown, New Zealand location. The two weeks stay allowed Ash to take time out of her normal routine and immerse herself in the landscape and culture of the area.

Whilst working outside the confines of her normal environment and routine, Ash experimented with different ways of working and with new materials. From natural pigments made from plants found on the property to paper collage and painting onto fabric, Ash was able to spend lots of time reflecting on her practice.

This development of new ideas has resulted in a diverse collection of experimental works inspired by the energy of new experience and reflection.



**The Sky's Lullaby**

Acrylic on polycotton canvas. Framed in Scribbly Gum

122 x 92 cm

\$6,200



**Beauty In Chaos**

Acrylic on polycotton canvas. Framed in Oak

85 x 75 cm

\$3,500





**Dawns Hues**

Acrylic on polycotton canvas. Framed in Oak

85 x 75 cm

\$3,500



**Golden Hues**

Acrylic on polycotton canvas. Framed in Oak

85 x 75 cm

\$3,500



**Silence She Will Bank**

Acrylic on polycotton canvas. Framed in Oak

85 x 75 cm

\$3,500



**To Bright To Contain**

Acrylic on polycotton canvas. Framed in Oak

85 x 75 cm

\$3,500



**Fabric Of Time**

Acrylic on polycotton. Framed in Scribbly Gum

75 x 85 cm

\$3,500



**Rising Challenge**

Acrylic on paper. Framed in Tasmanian Oak

41 x 64 cm

\$1,300

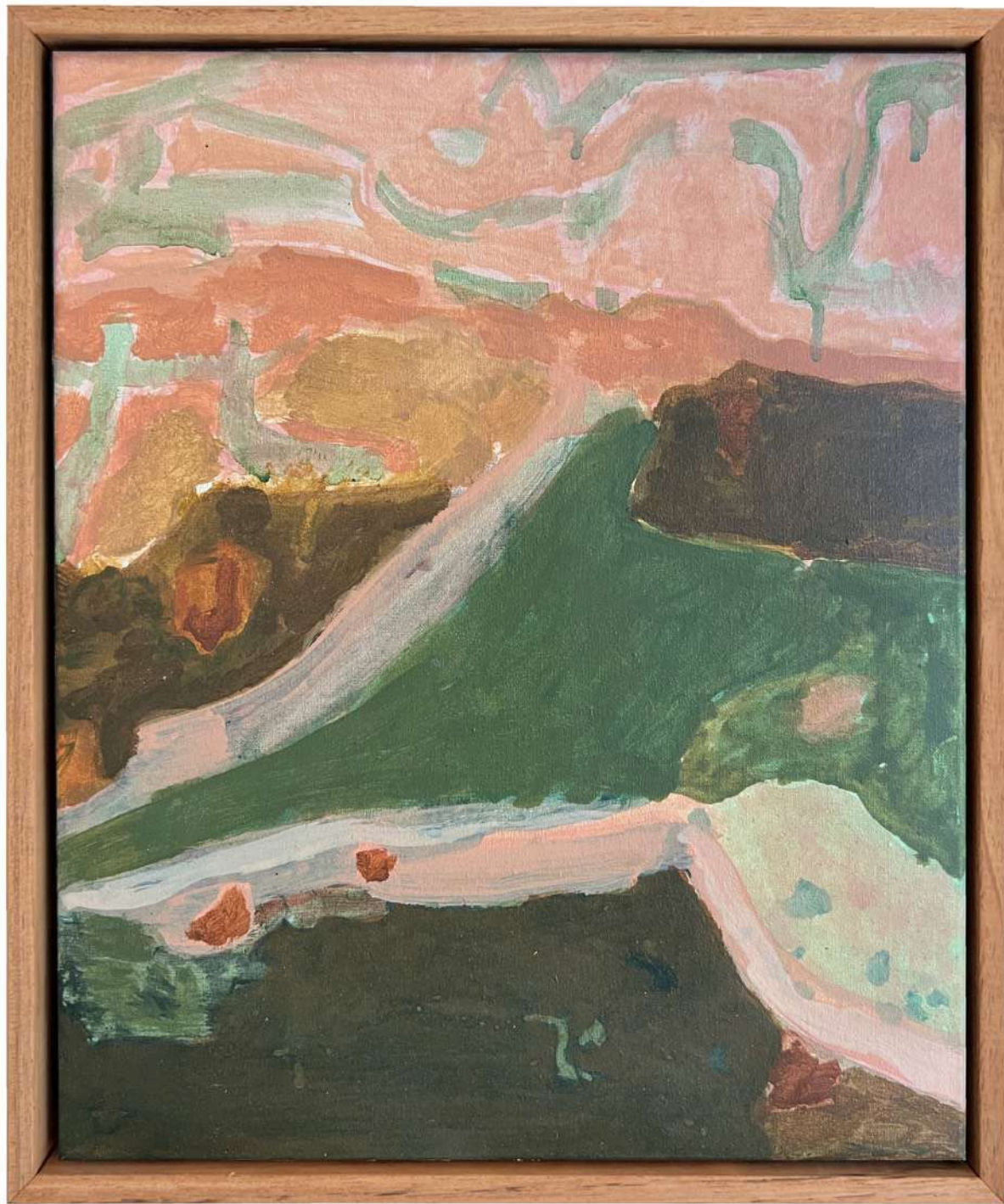


**Stary Skies**

Acrylic on paper. Framed in Tasmanian Oak

41 x 64 cm

\$1,300



**When You Wake**

Acrylic on polycotton canvas. Framed in Oak

33 x 28 cm

\$1,100





**A Lullaby**

Acrylic on polycotton canvas. Framed in Oak

32 x 27 cm

\$990

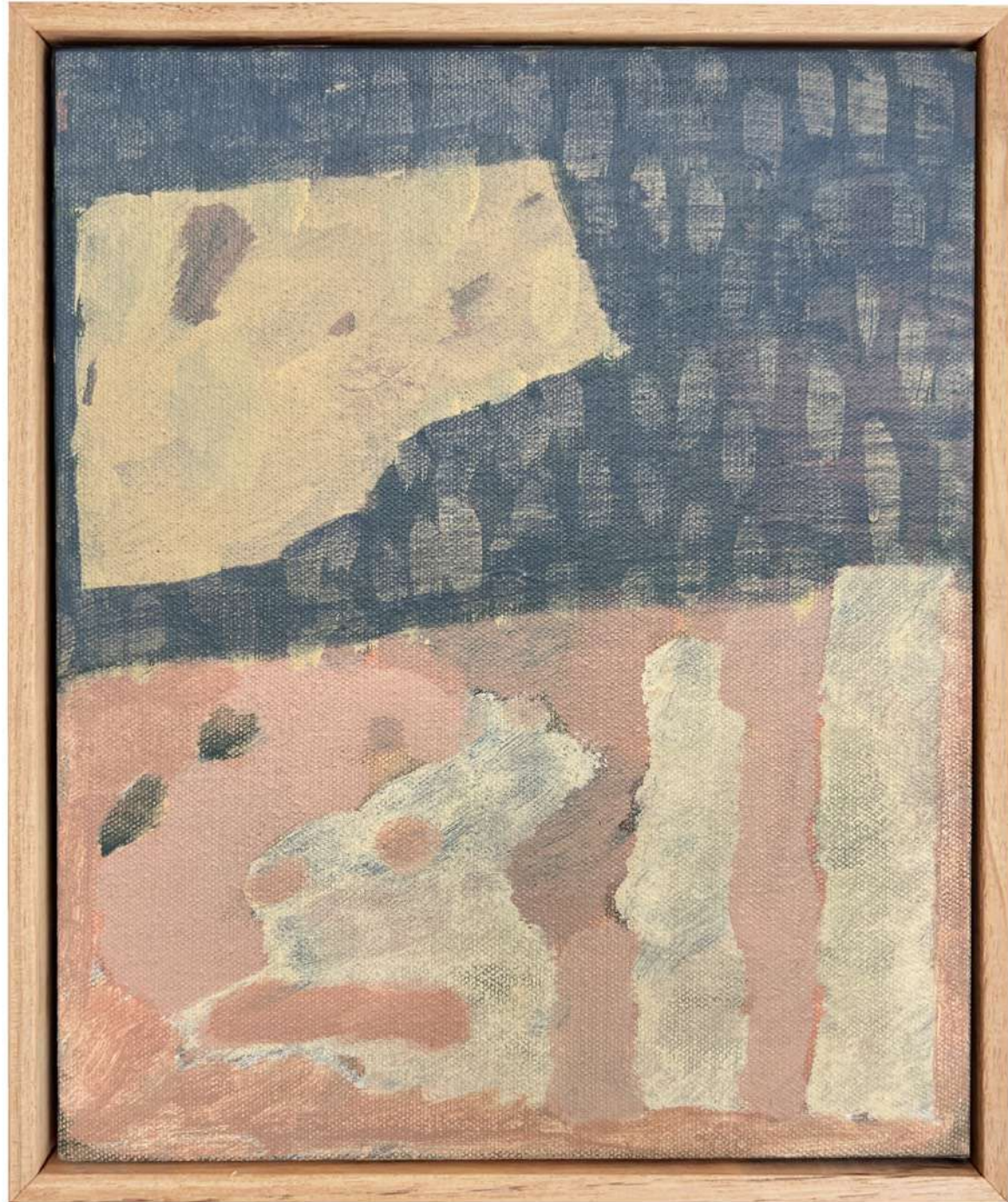


**A Wonder**

Acrylic on polycotton canvas. Framed in Oak

32 x 27 cm

\$990



**By Raindrops**

Acrylic on polycotton canvas. Framed in Oak

32 x 27 cm

\$990



**Cloud Gazing 1**

Acrylic on silk. Framed in Oak

32 x 27 cm

\$990

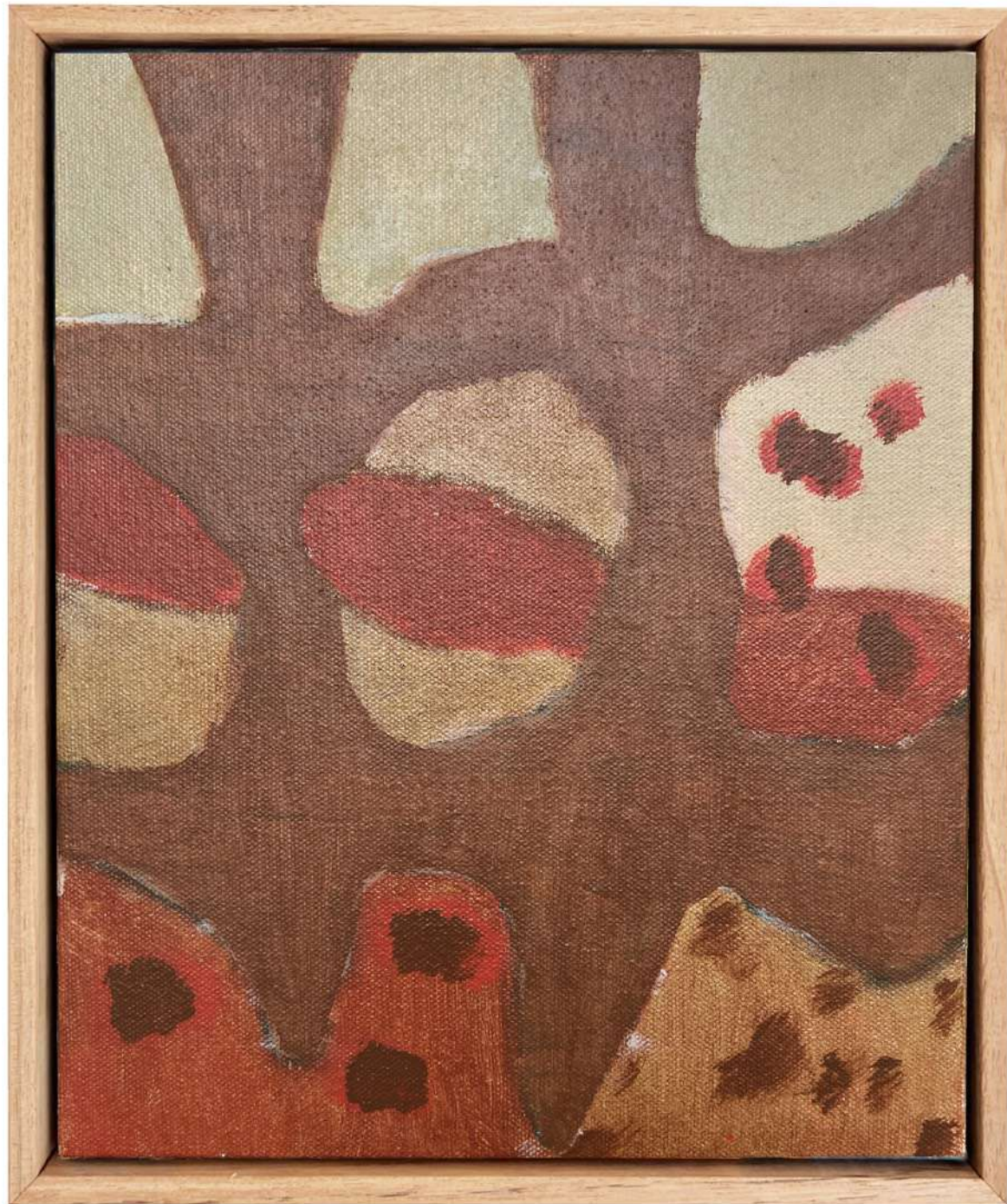


**Cloud Gazing 2**

Acrylic on silk. Framed in Oak

32 x 27 cm

\$990



**Feathers & Flames**

Acrylic on polycotton canvas. Framed in Oak

32 x 27 cm

\$990



**Reflecting**

Acrylic on polycotton canvas. Framed in Oak

32 x 27 cm

\$990



**She's Looking Down**

Acrylic on polycotton canvas. Framed in Oak

32 x 27 cm

\$990





**She Is There**

Acrylic on polycotton canvas. Framed in Scribbly Gum

28 x 23 cm

\$770



SAINT CLOCHE

Saint Cloche Gallery  
37 MacDonald Street, Paddington NSW [SaintCloche.com](http://SaintCloche.com)