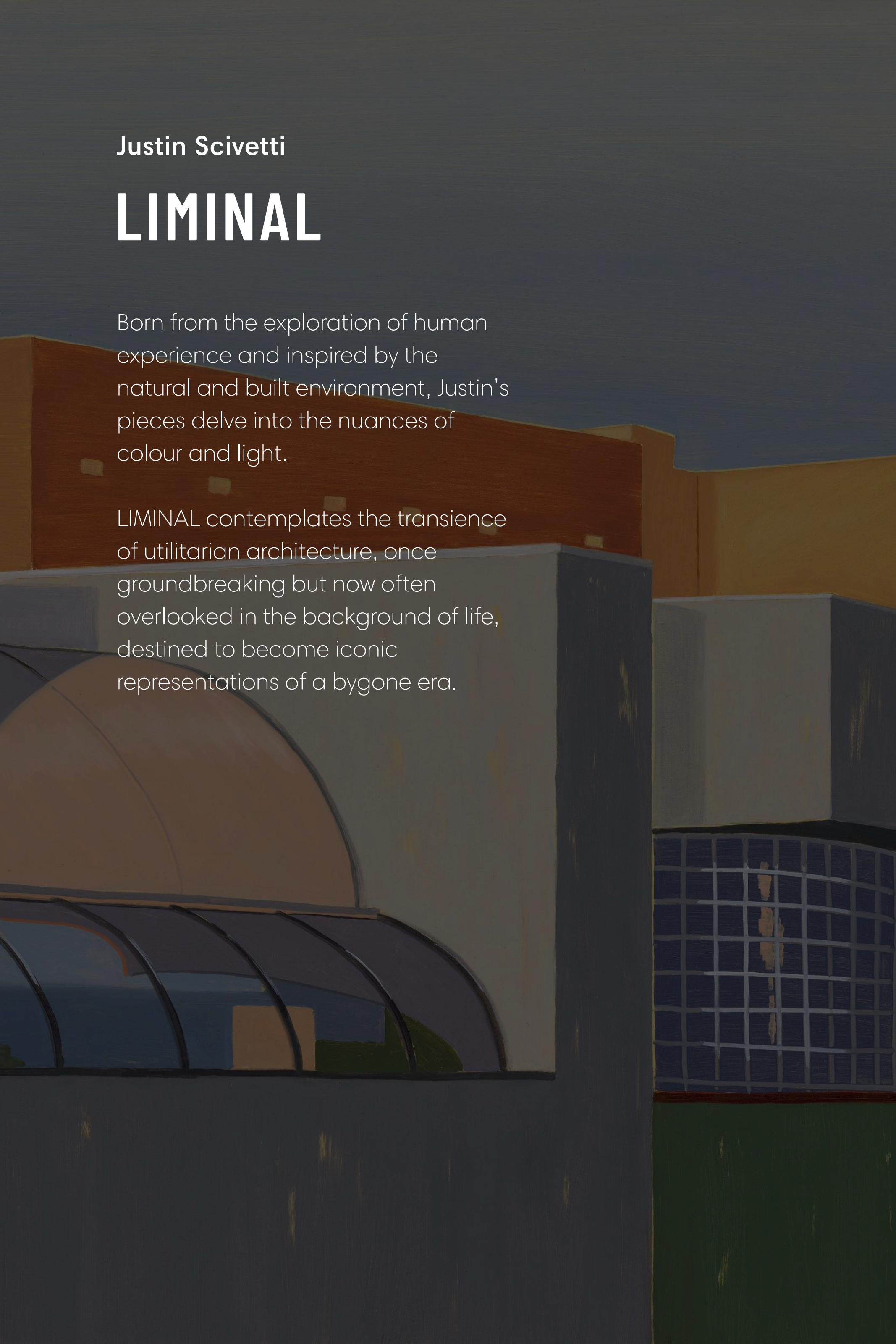


Justin Scivetti

LIMINAL

27 March - 7 April 2024





Justin Scivetti

LIMINAL

Born from the exploration of human experience and inspired by the natural and built environment, Justin's pieces delve into the nuances of colour and light.

LIMINAL contemplates the transience of utilitarian architecture, once groundbreaking but now often overlooked in the background of life, destined to become iconic representations of a bygone era.

“

“Exploration, contemplation, and iteration are the pillars of my practice. In this series, I immersed myself in industrial landscapes, creating canvases unfolding like chapters. Each piece reflects impermanence and concealed beauty in what I call ‘essential places.’

Amid these liminal landscapes, I uncover beauty in rational, modernist buildings, weaving colour and geometry into a rhythmic synthesis. Distilling and redefining elements, I liberate collective perceptions of place. These everyday forms, once groundbreaking, stand at the departure point of revered artifacts.

This series marks an inflection point at the beginning of a new epoch, capturing the changing life of essential places where manufacturing, artistry, and architecture converge. It explores the impermanence of disappearing industrial landscapes, transforming them into permanent voices through precise use of colour and iterative reconfiguration.”

- Justin Scivetti





About Justin Scivetti

Justin Maurice Scivetti is a figurative landscape painter based in Melbourne. He holds a Bachelor of Fine Arts in Printmaking from the National Art School (2011) and a Diploma of Fine Arts in Painting & Photography from St. George TAFE, Sydney (2008). More recently, he earned a Diploma of Applied Horticultural Science from Melbourne Polytechnic in 2017, aligning with his parallel career in horticulture and landscaping.

His artistic journey has been marked by exhibitions in Sydney and Melbourne, with notable recognition, including the Oil Painting Prize in the Waverly Art Prize 2019.





Liminal

Oil on Polycotton, Blackwood Frame

150 x 120 cm

\$6,900



Impermanence

Oil on Polycotton, Blackwood Frame

107 x 92 cm

\$5,700



Shelter

Oil on Polycotton, Blackwood Frame

92 x 107 cm

\$5,700



Built

Oil on Polycotton, Blackwood Frame

76 x 60 cm

\$3,300



Factory

Oil on Polycotton, Blackwood Frame

76 x 60 cm

\$3,300



Immersion

Oil on Polycotton, Blackwood Frame

76 x 60 cm

\$3,300



Reflection

Oil on Polycotton, Blackwood Frame

76 x 60 cm

\$3,300



Industry 1

Oil on Polycotton, Blackwood Frame

61 x 51 cm

\$2,500



Industry 2

Oil on Polycotton, Blackwood Frame

61 x 51 cm

\$2,500



Industry 3

Oil on Polycotton, Blackwood Frame

61 x 51 cm

\$2,500



Departure

Oil on Polycotton, Blackwood Frame

61 x 51 cm

\$2,500



In-betweenness

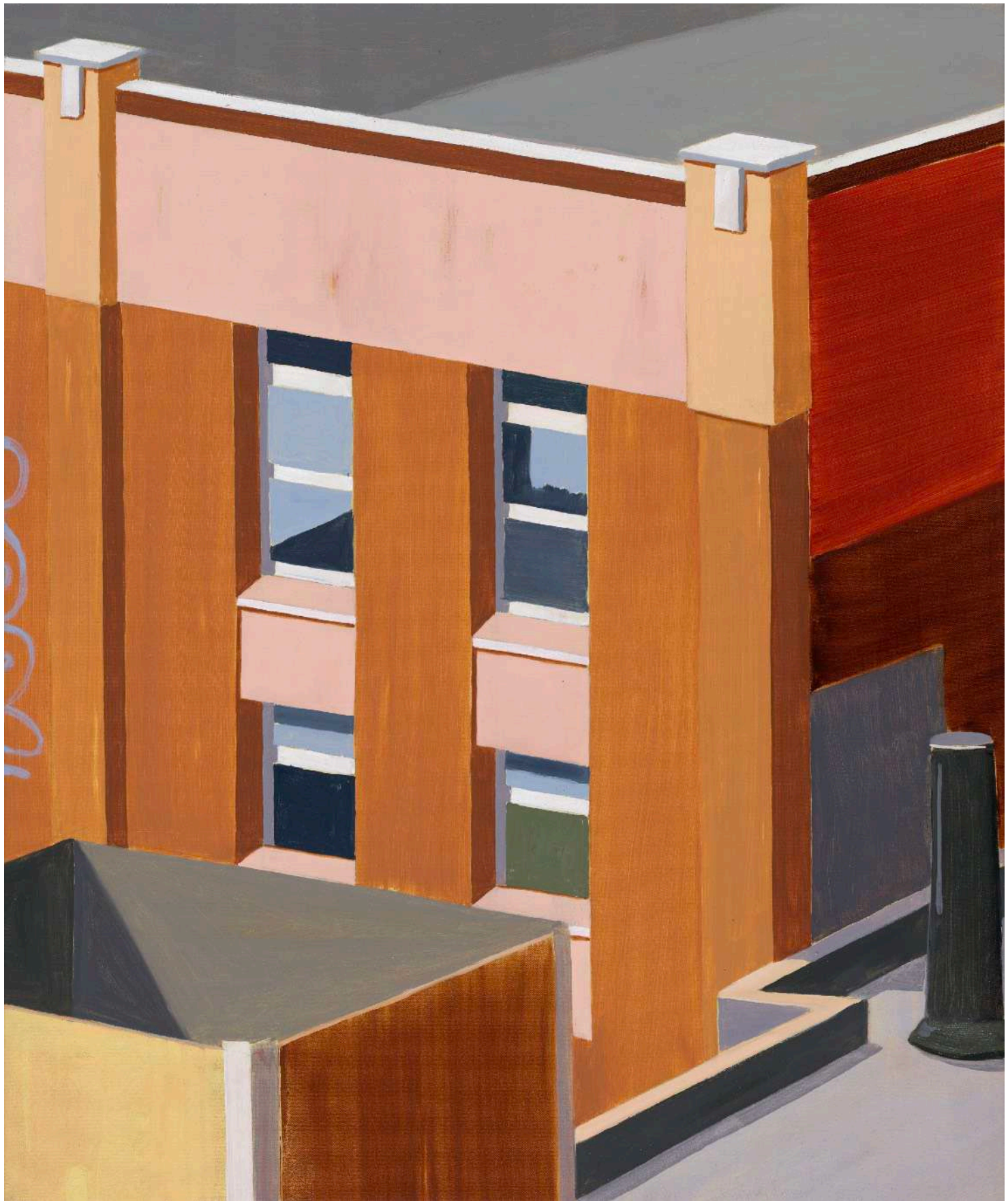
Oil on Polycotton, Blackwood Frame

61 x 51 cm

\$2,500



Ok
Oil on Polycotton, Blackwood Frame
61 x 51 cm
\$2,500



Rooftop

Oil on Polycotton, Blackwood Frame

61 x 51 cm

\$2,500



Stairway

Oil on Polycotton, Blackwood Frame

61 x 51 cm

\$2,500



SAINT CLOCHE

Saint Cloche Gallery
37 MacDonal Street, Paddington NSW
SaintCloche.com