

TIFFANY & Co.

CHADSTONE

ETHERIUM

REVEALED BY



As an extension of Saint Cloche's ongoing collaboration with Tiffany and Co Australia's Sydney flagship the ETHERIUM exhibition will now encompass Chadstone and Collingwood stores in Melbourne.

Saint Cloche Founder, Kitty Clark's exquisite curation of hand-selected artworks encapsulate the force and creativity of each emerging Australian artist through their unique and diverse works to envelope Melbourne store visitors in an immersive, sensorial experience.

Tiffany & Co is legendary for its optimism and energy that inspires a dream that will continue with the launch of ETHERIUM in Collins Street and Chadstone, merging two enchanted worlds of jewellery and art.

SAINT CLOCHE PROUDLY PRESENTS

ETHERIUM ARTISTS

WILL COOKE

TANYA LINNEY

DANIEL O'TOOLE

BEC SMITH

KIRSTEN PERRY

ETHERIUM

WILL COOKE

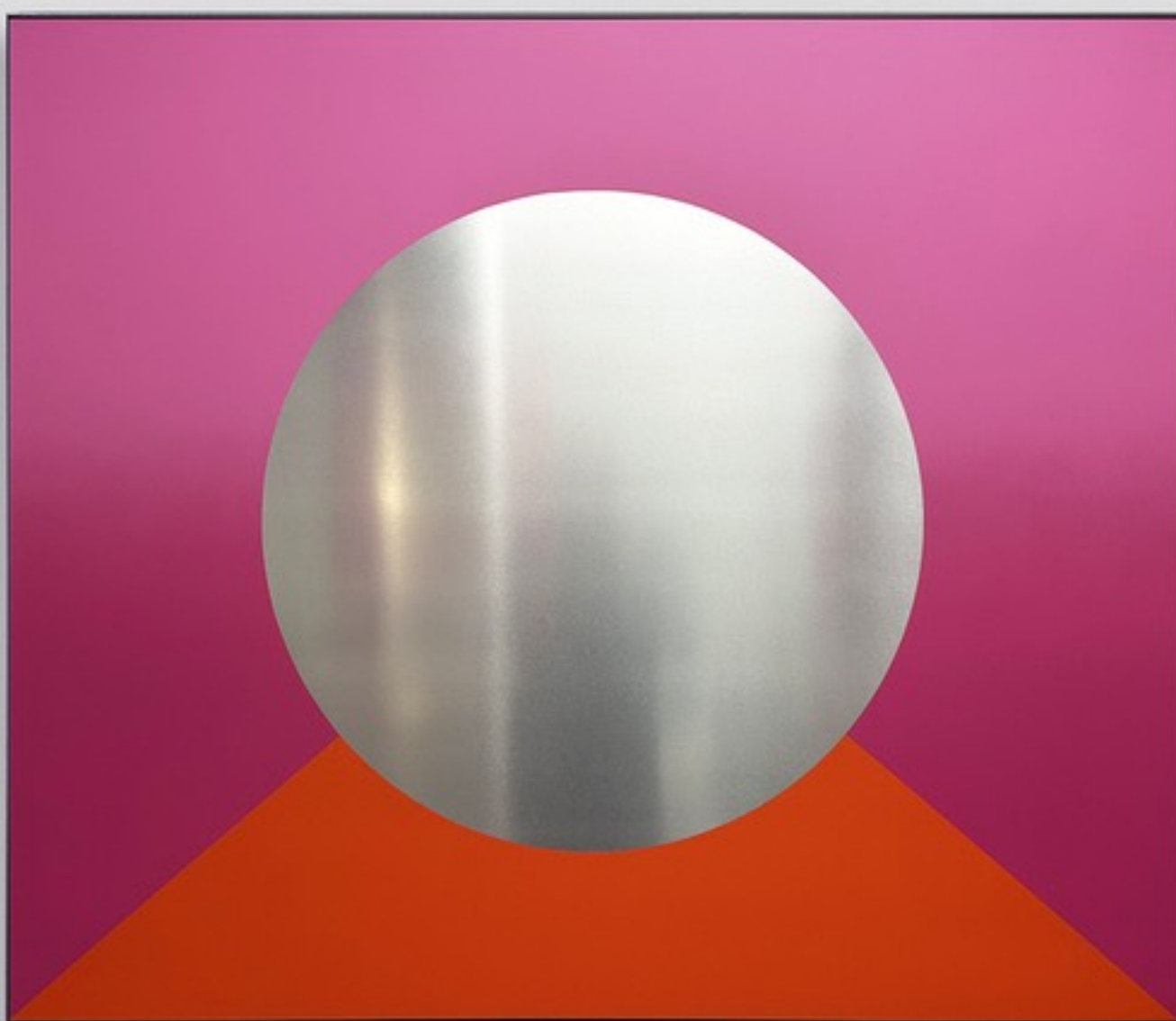
“My works embrace colour, shape and tone. These themes have been explored through multiple mediums including aluminium, paper, light and installation. I am constantly inspired by minimal abstraction, the histories of design and the evolution of architecture. The way these contexts provide material paradigms for human behaviour is endlessly interesting to me.”

Will Cooke is a Sydney-based artist who creates illusion-based paintings that revel in the histories of industrial design, meditation, architecture and personal development. Will's minimal pattern-based and often geometric artwork reflects a beautiful observation of colour, shape and tone and has seen him participate in numerous exhibitions both nationally and internationally.

Most recently, Will was commissioned by the City of Sydney to canvas the 'Top of the Town' building Darlinghurst, in a giant mural as part of their 'Art and About' program.

ETHERIUM

WILL COOKE



External Reflection

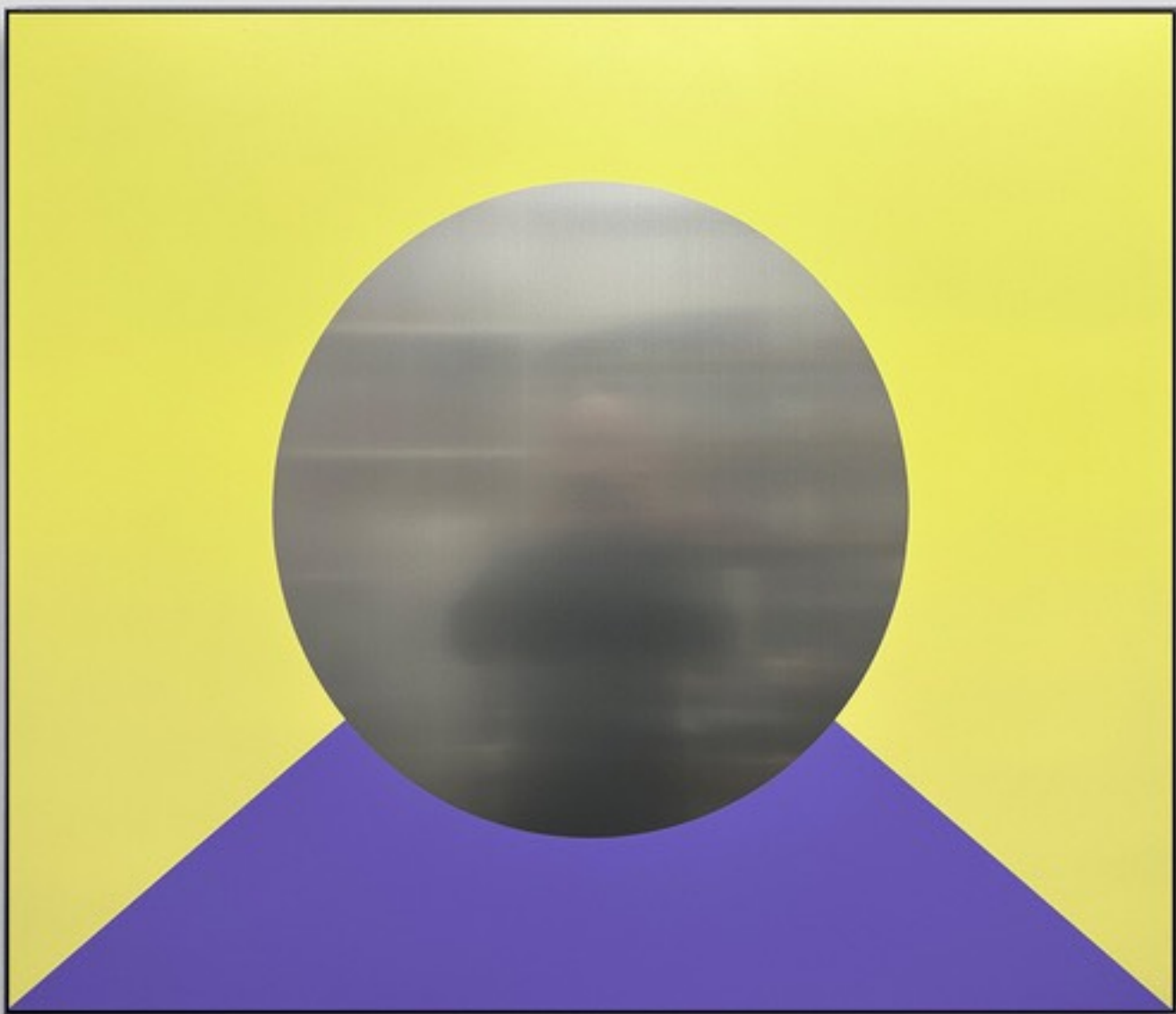
Primer, acrylic on aluminium panel, powder-coated
aluminium frame, lacquered clear coat

120 x 140 cm

\$8,500

ETHERIUM

WILL COOKE



Existential Reflection

Primer, acrylic on aluminium panel, powder-coated
aluminium frame, lacquered clear coat

100 x 120 cm

\$7,500

ETHERIUM

TANYA LINNEY

“My work is always looking for the dichotomies in life/art.

It’s in these oppositional states that I find charge and energy “

Tanya Linney is a Sydney based multi-disciplinary artist and a graduate of the National Art School. Passionate about the nexus of technology and art with a focus on the representation of domesticity and women in a digital context.

These concepts are explored through the use of sculpture, material, installation, photography and painting.

ETHERIUM

TANYA LINNEY



Swing Star
Acrylic on poly-cotton
102 x 122 cm
\$4,200

ETHERIUM

DANIEL O'TOOLE

"Inspired by personal experiences of synaesthesia, I seek to deliver a connected dialogue between sensory modes of communication; primarily between colour and sound. Various light-altering materials are used to affect visual perception and re-animate the static image. Questioning the ubiquity of the digital screen, the work emphasises 'seeing' as an active engagement rather than a passive receiving."

Naarm (Melbourne) based artist, Daniel O'Toole makes multi-media works spanning sculptural colour-field paintings, video and sound. Having worked as a musician and trained as an audio engineer, Daniel plays a range of instruments and produces experimental electronic music that has been seamlessly integrated into his synaesthetic video works that appear to be moving versions of his paintings. The range of media and sensory modes of communication have come together to form an expansive practice that deals with natural phenomena. Daniel has an almost scientific way of utilising technology and industrial fabrication processes to interface between humanity and the natural world. The result being as playful and unexpected as it is luminous and subtle.

ETHERIUM

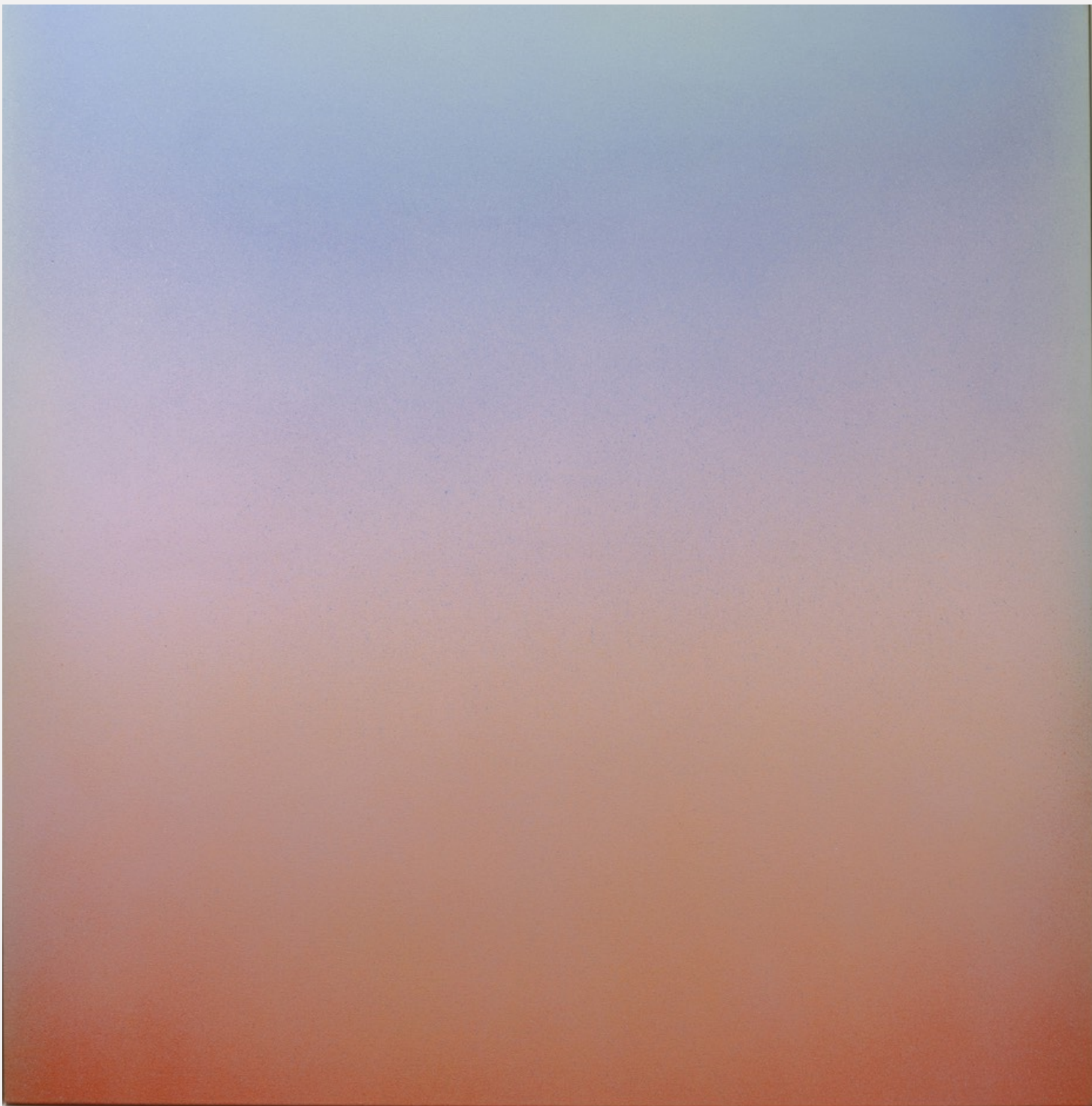
DANIEL
O'TOOLE



Untitled
Acrylic on cotton
170 x 170 cm
\$15,000

ETHERIUM

DANIEL
O'TOOLE



Amber Fields

Synthetic polymer on canvas, with custom welded aluminium frame

170 x 170 cm

\$14,000

ETHERIUM

B E C S M I T H

“My works are realisations of actual and idealised situations about the dynamics of people translated into a painted static ‘freeze frame’. The motif itself represents a sort of perpetuity and ongoing layering like a fossil or shell. Working with multiple boards, each one is a chapter in a longer narrative, and that a story is bigger than the sum of its parts. If you look closely you can see the pattern being reused repeatedly in very different ways. The pattern isn't 'perfect', it's not a 'tiled repeat pattern' one may find in a roll of fabric. The pattern is fallible, using modularity allows one, two or more boards to be moved around. Rearranged, the ‘pattern’ is momentarily disrupted and the next semblance creates something altogether new.

Bec Smith is a Melbourne-based artist who has practiced art and design in both Australia and overseas for over 20 years. In pursuit of her creative practice Smith has earned degrees from RMIT, Swinburne National School of Design and the Art Academy, London. Smith has also been selected for the Belle Art Prize and exhibited at the Melbourne Design Festival on multiple occasions. She has always stayed particularly interested in abstract, non-objective, and colourfield paintings from the early part of the last century – a natural extension of a designer’s grounding in the early design language of the Bauhaus.

ETHERIUM

B E C S M I T H



Open Circuit III

Acrylic and mixed media on board

60 x 60 cm

\$1,850

ETHERIUM

BEC SMITH



Open Circuit IV
Acrylic and mixed media on board
60 x 60 cm
\$1,850

ETHERIUM

BEC SMITH



Series Circuit IV

Acrylic and mixed media on board

60 x 60 cm

\$1,850

ETHERIUM

BEC SMITH



Close Circuit I

Acrylic and mixed media on board

60 x 60 cm

\$1,850

ETHERIUM

BEC SMITH



Open Circuit I

Acrylic and mixed media on board

60 x 60 cm

\$1,850

ETHERIUM

B E C S M I T H



Open Circuit II

Acrylic and mixed media on board

60 x 60 cm

\$1,850

ETHERIUM

BEC SMITH



Close Circuit III

Acrylic and mixed media on board

60 x 60 cm

\$1,850

ETHERIUM

B E C S M I T H



Close Circuit IV

Acrylic and mixed media on board

60 x 60 cm

\$1,850

ETHERIUM

BEC SMITH



Parallel Circuit III
Acrylic and mixed media on board
60 x 60 cm
\$1,850

ETHERIUM

BEC SMITH



Series Circuit III

Acrylic and mixed media on board

60 x 60 cm

\$1,850

ETHERIUM

KIRSTEN PERRY

“Twists and turns you would not necessarily expect. Connections made and explored, an exchange that is mutually attractive. An interchange must have some common characteristics, a compatibility, but also enough difference that creates a little miracle. This work is composed of modular units that can be arranged in various forms. Like building blocks, train sets, pipe works, the units have a playful tone that build a narrative.”

Kirsten Perry is a Naarm / Melbourne based ceramic artist. She predominately slip casts mid-fired functional and non-functional vessels that pay homage to traditional ceramics. The bio-morphic objects she creates are initially carved from disposable materials such as foam and cardboard, then translated into ceramic. Something is gained in this translation, somehow more than the evidence of the process. Kirsten’s practise highlights texture and often exaggerates imperfection. She is attracted to flaws and vulnerabilities.

Kirsten has bachelor’s in fine art and Industrial Design from RMIT University, and an Advanced Diploma of Electronic Design & Interactive Media, RMIT. Kirsten has exhibited in a range of Australian and international galleries and has won the 2021 Klytie Pate Ceramic Award and the 2021 Stanthorpe 3D Cast Art Prize, and has been a finalist in various sculpture and ceramic awards.

ETHERIUM

KIRSTEN PERRY



Trumpet Vase

Hand built press moulded raku clay with glaze

42 x 28 x 23 cm

\$3,000

ETHERIUM

KIRSTEN PERRY



Pinch Vase

Hand built press moulded raku clay with glaze

30 x 20 x 20 cm

\$1,400

ETHERIUM

KIRSTEN PERRY



Vase III

Mid fire slip cast and glaze

22 x 24 x 5 cm

\$700

ETHERIUM

KIRSTEN PERRY



Vase VI

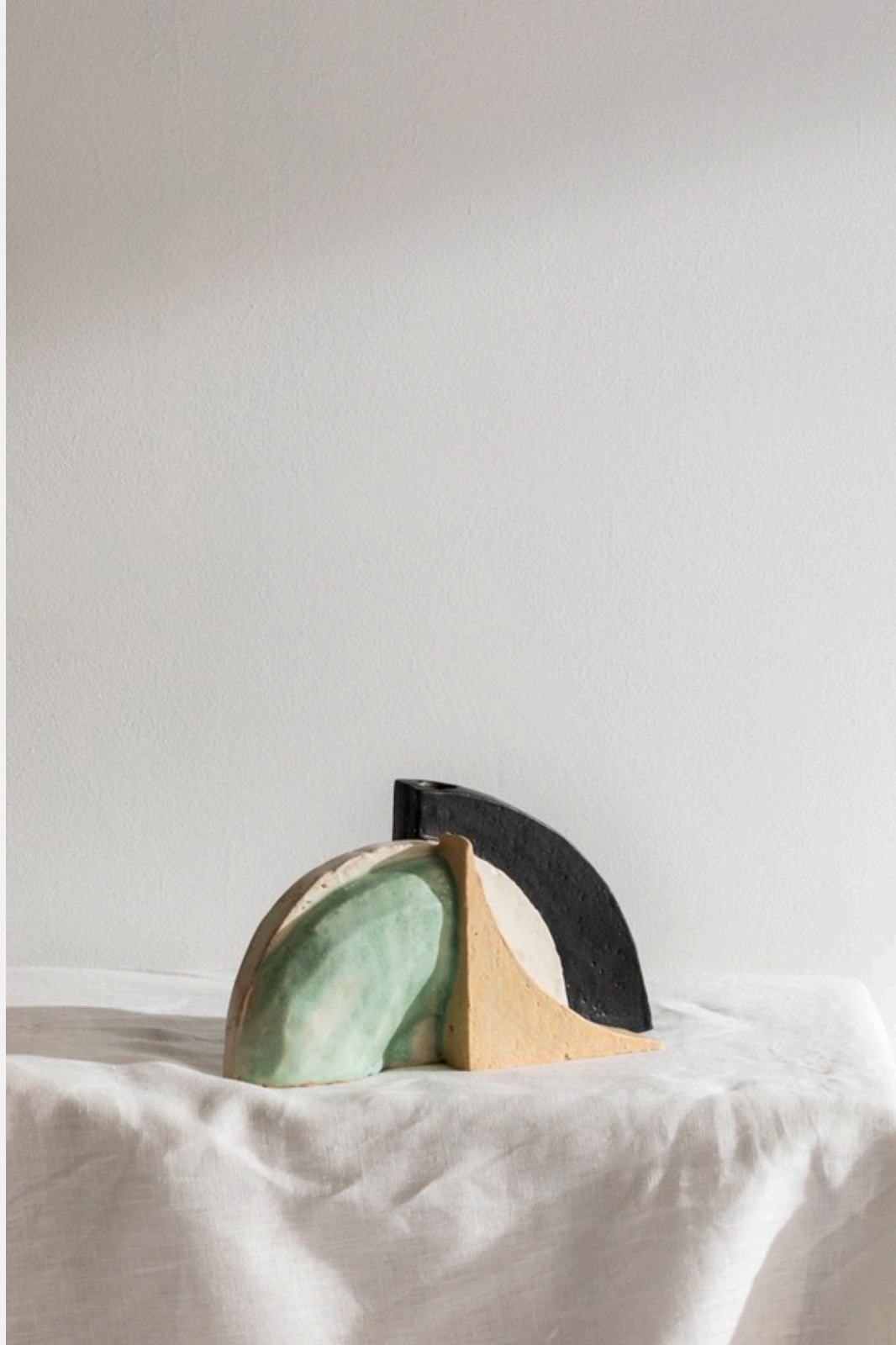
Mid fire slip cast and glaze

27 x 13 x 20 cm

\$600

ETHERIUM

KIRSTEN PERRY



Vase V

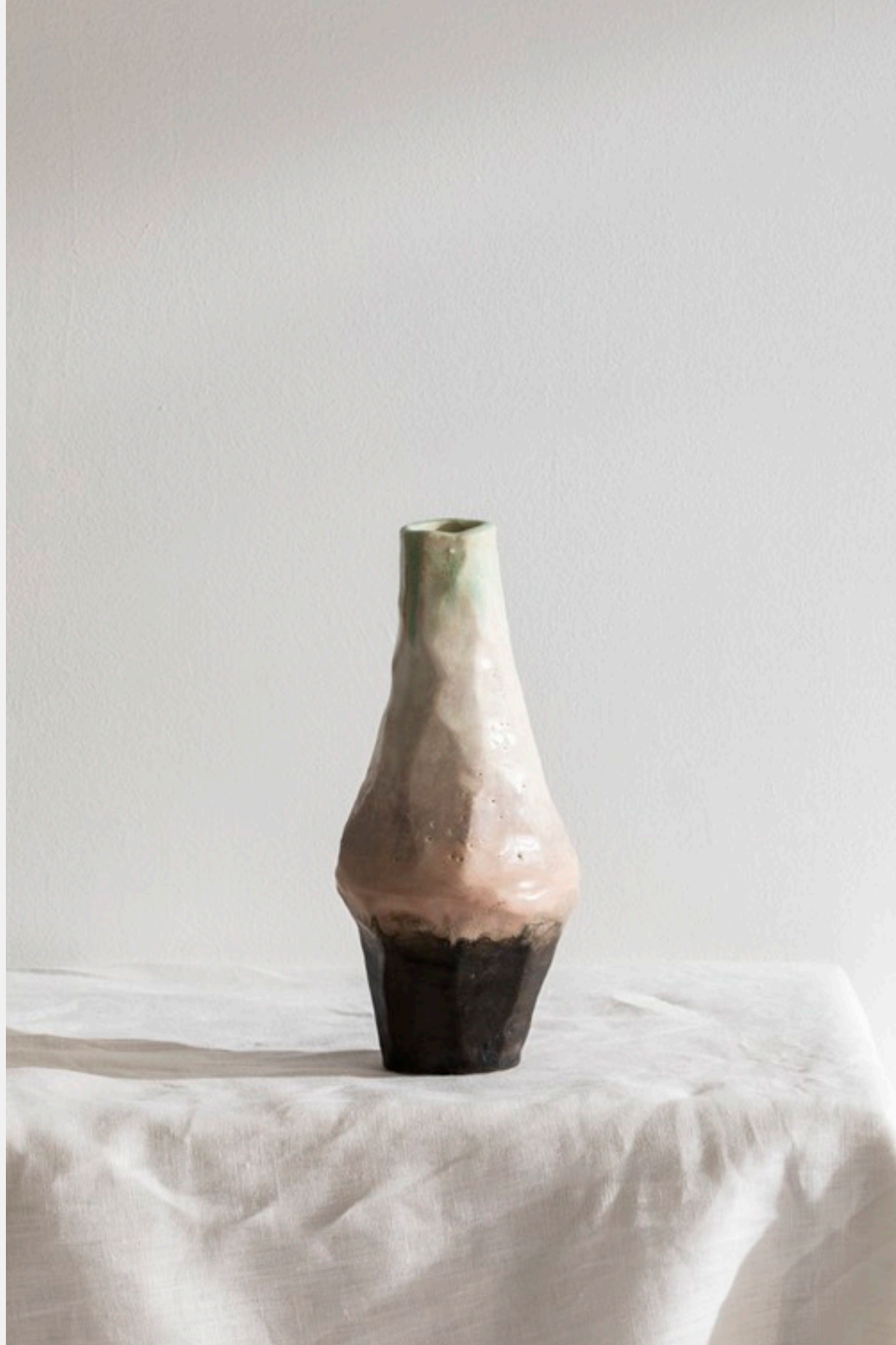
Mid fire slip cast and glaze

23 x 13 x 7 cm

\$500

ETHERIUM

KIRSTEN PERRY



Tapered Vase II
Mid fire slip cast and glaze
23 x 10 x 10 cm
\$300

ETHERIUM

KIRSTEN PERRY



Tapered Vase I
Mid fire slip cast and glaze
23 x 10 x 10 cm
\$300

ETHERIUM

KIRSTEN PERRY



Tapered Vase III
Mid fire slip cast and glaze
23 x 10 x 10 cm
\$300

ENQUIRIES
info@saintcloche.com



SAINT CLOCHE
37 MACDONALD STREET PADDINGTON NSW
SAINTCLOCHE.COM