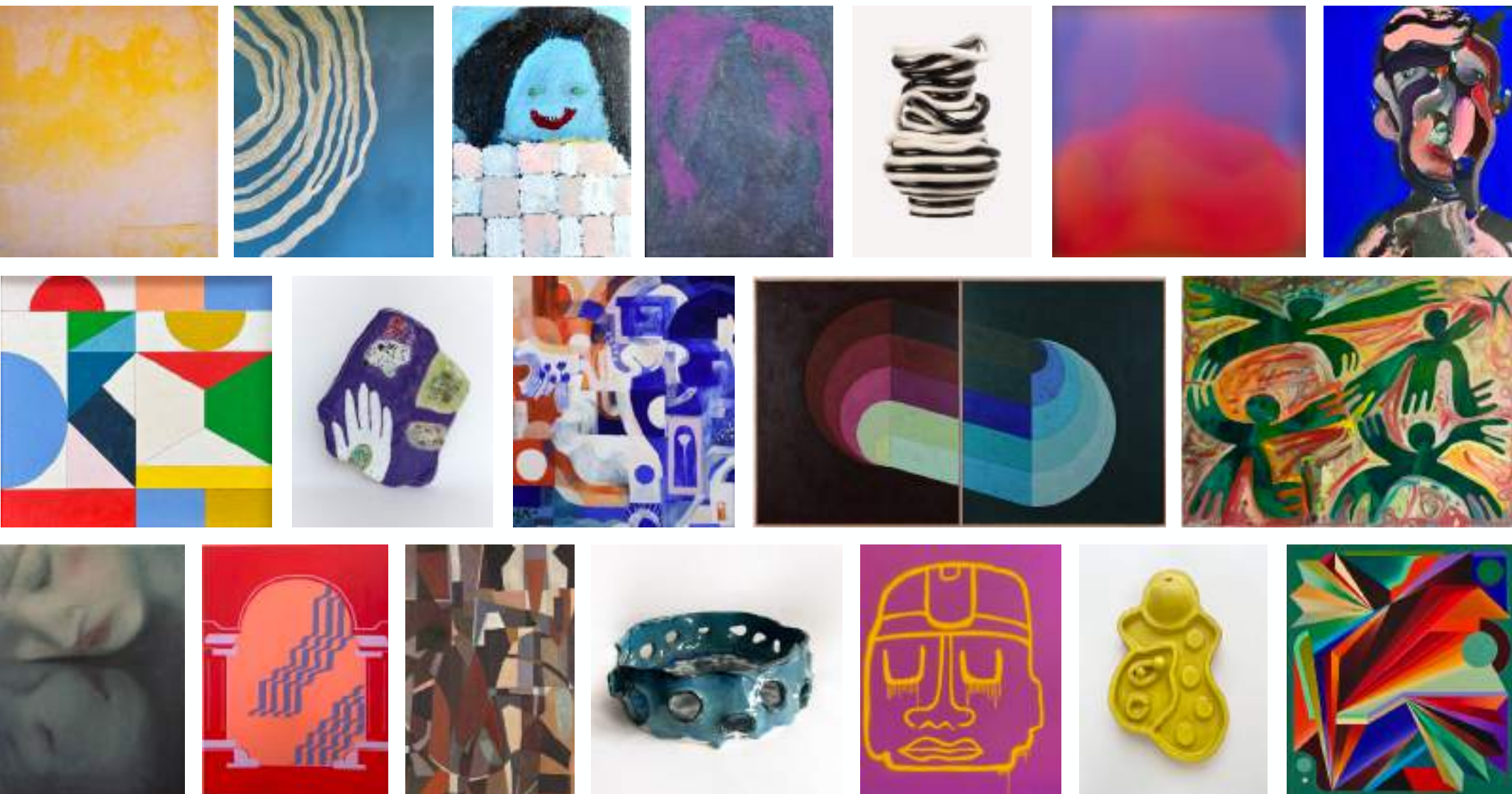




Curated by Kitty Clark

# ESCAPADE

Unveiling the Wild Spectrum of Artistic Exploration



6 December 2022 - 14 January 2024

*"As each year unfolds, and a new horizon beckons, my gaze turns to the past for inspiration and hope. In retrospection, I discover the courage to face the future anew, invoking a renewed sense of hope for a reimagined tomorrow.*

*In this remarkable era, I am reminded that, through an undaunting capacity to change, we hold the power to break down barriers and usher in a dawn of a new artistic era - beyond our wildest dreams. It is a time to celebrate the transformative potential of art and embrace the limitless possibilities that lie ahead."*

*- Kitty Clark*

# ESCAPADE

## Artists

**Annie Mangen**

**Bec Smith**

**Beth Gibbeson**

**Charlotte Alldis**

**Charlotte Swiden**

**Daniel O'Toole**

**Emma Labattaglia**

**Emma Lipscombe**

**Hannah Lange**

**Joshua Searle**

**Katie Manekshaw**

**Leanne Xiu Williams**

**Natalie Synnot**

**Nikolaus Dolman**

**Nunzio Miano**

**Ria Green**

**Sarana Haeata**

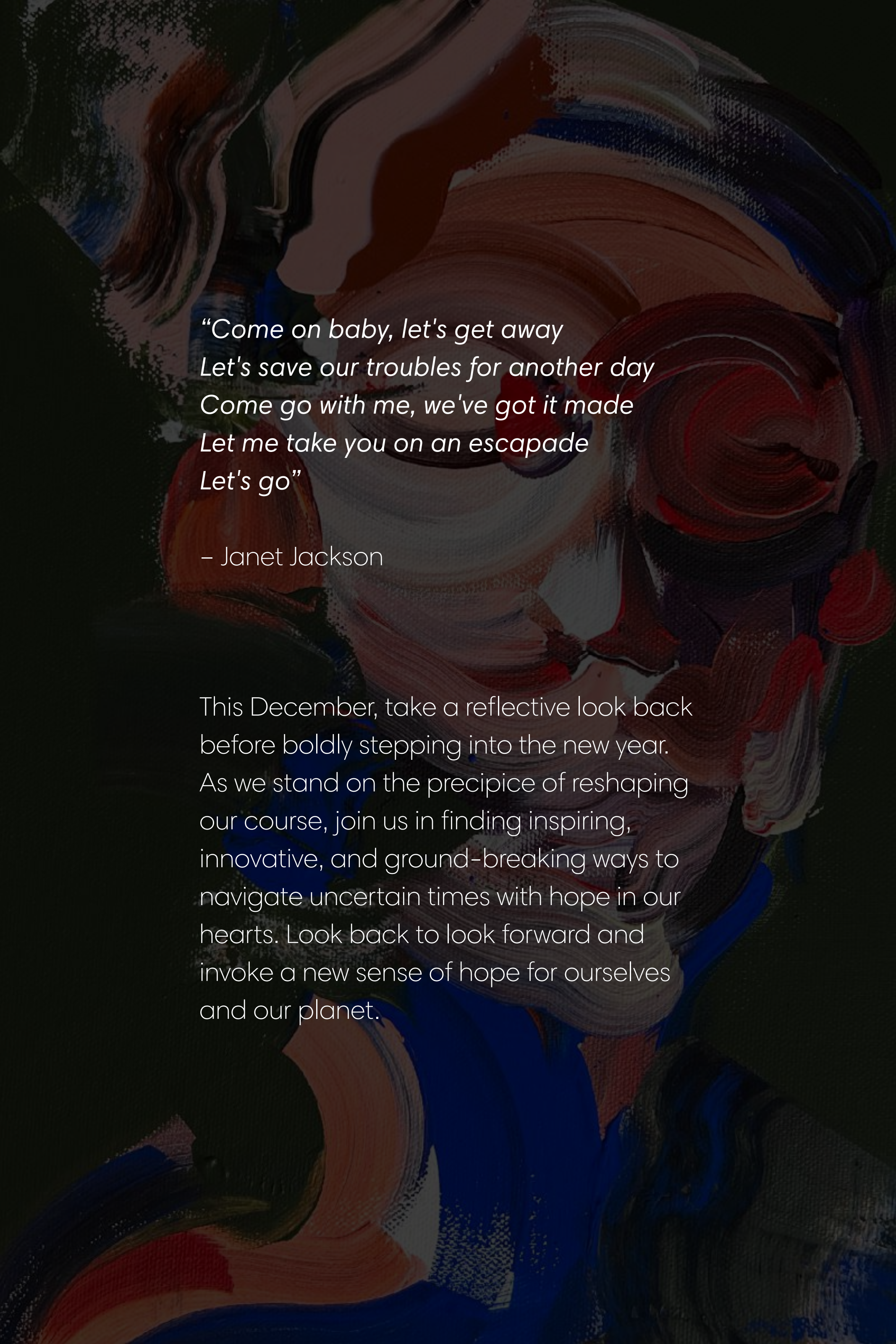
**Sonia Gill**

**Valerie Vigar**

( click artist name to link to section )

Join us for Saint Cloche's Grand Finale Group presentation curated by Kitty Clark, featuring 19 artists capturing the essence of the iconic 1990s. Escapade translates this 'best decade ever' into a contemporary vocabulary, authentically aligned with Saint Cloche and Kitty Clark's unique curatorial approach.

Explore a color journey where vibrant and contrasting palettes mirror the spectrum of emotions in the pursuit of escape and adventure. This group of artists invites you on an exploration of material sensitivity, narrating a journey of color through heritage and nostalgia.



*“Come on baby, let's get away  
Let's save our troubles for another day  
Come go with me, we've got it made  
Let me take you on an escapade  
Let's go”*

– Janet Jackson

This December, take a reflective look back before boldly stepping into the new year. As we stand on the precipice of reshaping our course, join us in finding inspiring, innovative, and ground-breaking ways to navigate uncertain times with hope in our hearts. Look back to look forward and invoke a new sense of hope for ourselves and our planet.

ESCAPADE

ANNIE  
MIANGEN

@anniemangen

“

In my exploration, 'Unobserved Growth,' delves into the perception of growth and transformation through color and form. The ability to discern incremental differences becomes apparent when colors are juxtaposed against darker or lighter tones. Each individual piece contributes to the overall visual arc, with the first and final tile symbolizing the change between a beginning and an end.

In 'Melting Pot & Wall Plate,' I purposefully embrace the definitive use of black and white to draw attention to composition, form, and space. The stark contrast between these two colors imparts a sense of strength and intensity, achieved through my deliberate practice of restraint.

Annie Mangen

## About Annie Mangen

Annie Mangen (b. 1989) is an Australian Ceramic Artist whose work explores juxtaposition through form, colour, and subject matter.

A sense of duality is expressed through Annie's work, as she ponders the space between simplicity and complexity. Her sculptural pieces evoke a playful yet bold quirk and mirror her interest in delving into themes of the self and the thicket of inner life.

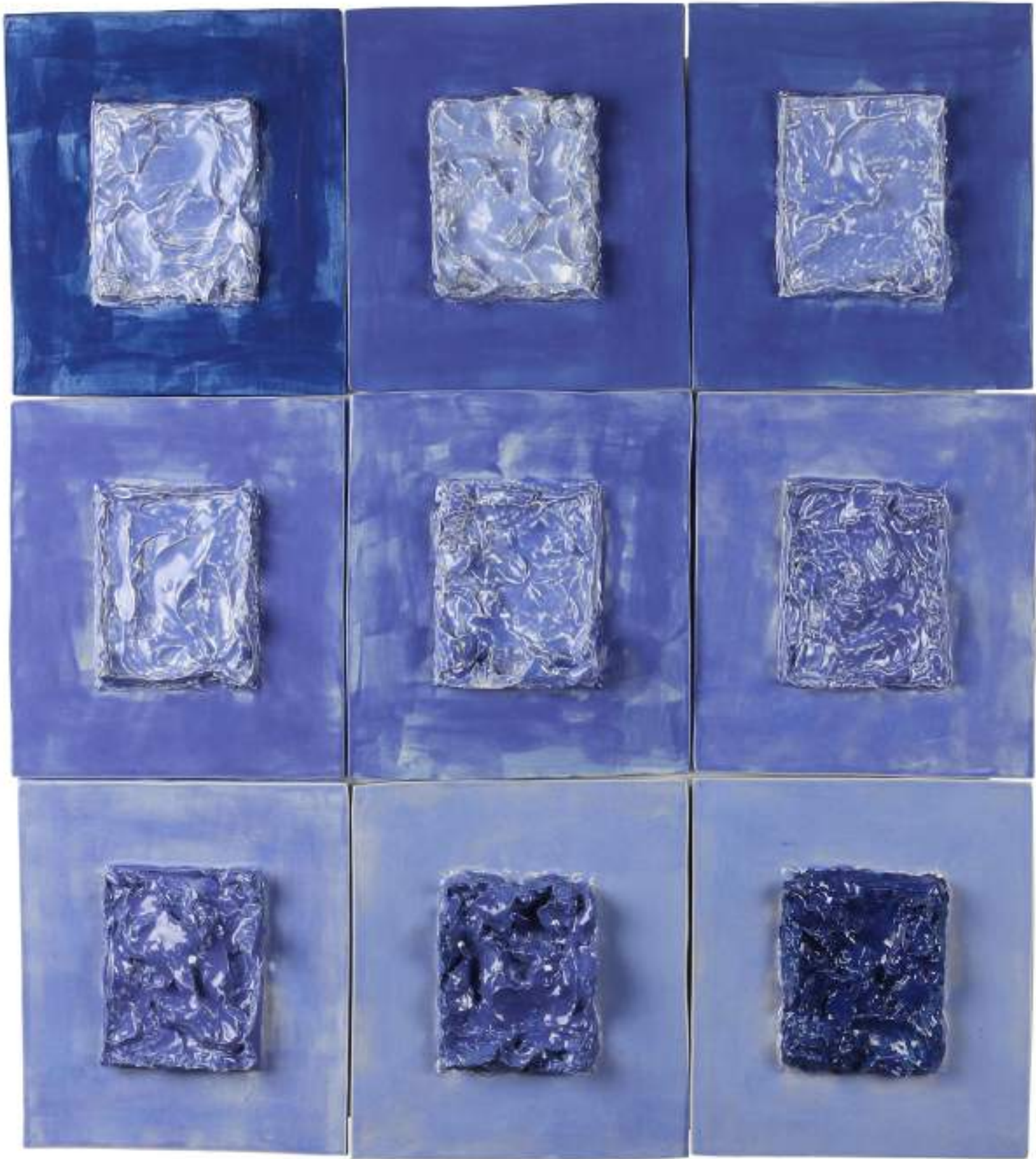
Each piece is laboured over, using a hand-built method, evolving intuitively, and celebrates the peculiarities found in each individual piece.







**Melting Pot No. 3**  
Stoneware, Glaze  
43.5 x 27 cm  
\$3,500



**Unobserved Growth**  
Stoneware, Glaze  
44 x 49 cm  
\$2,500



**Melting Pot No. 4**  
Stoneware Glaze  
35 x 19 x 15 cm  
\$1,750



**Ceramic Wall Plate**  
Stoneware, Glaze  
35 x 35 cm  
\$650



**Mother of Pearl 1**  
Stoneware, Glaze  
11.5 cm dia  
\$550

ESCAPADE

BEC SMITH

@b.ecsmith

“

The activity of colour mixing is something both alchemical as well as physiological – the process of working towards, assessing, and the altering of shifting colours yields a kind of memory sense for me. I've been thinking about particular stories in time and place, and these works stimulate my moments of high adventure, sometimes precarious, dangerous situations, or vulnerable states that have marked in my body the same sensations from those times. To me the colour spectrum in these works provide a feeling tone of light and shade – the hallmarks of adventure.

Bec Smith

## About Bec Smith

Bec Smith is a Melbourne-based artist who has practiced art and design in both Australia and overseas for over 20 years. In pursuit of her creative practice Smith has attended RMIT, The Art Academy, London, and Swinburne National School of Design. Smith has also been selected for the Belle Arti Prize and exhibited at the Melbourne Design Festival on multiple occasions. She has always stayed particularly interested in abstract, non-objective, and colourfield paintings from the early part of the last century – a natural extension of a designer's grounding in the early design language of the Bauhaus.

Bec's art explores dynamics within structures and systems, translating them into static moments in time – luminal spaces depicting stories of fiction and non-fiction, duality, and multiple truths.







**A Butterfly Flaps Its Wings / Time Ripple I + II**  
Two panel piece. Acrylic and mixed media on panel  
78 x 66 cm  
\$5,000



**Looking Inside Stromboli Volcano / Night Skinny Dipping**  
Diptych. Acrylic and mixed media on panel  
92.5 x 75 cm  
\$4,500



**Second Date / Meet Me In The Tomberua Where Ringo Starr Got Married**  
Diptych. Acrylic and mixed media on panel  
92.5 x 75 cm  
\$4,500



**Non Parlo Italiano / Searching For A Bed In Rome**  
Diptych. Acrylic and mixed media on panel  
92.5 x 75 cm  
\$4,500

ESCAPADE

BETH  
GIBBESON

@bethgibbeson



“

My paintings embark on a personal journey through a boundless realm of color, creating a visual and emotional experience with rich, bold hues that seamlessly blend and allow light to permeate. Inspired by my past and present landscapes, I aim to capture the warmth of my life's journey. My work is a dialogue where emotions converse with a carefully chosen color palette, built up through meticulous layering to weave an interplay of light and pigment. Using bold colors is my personal way of harnessing the power and love of color, assembling richness and warmth to express myself. I hope viewers' eyes travel in and around the painting, exploring their own personal connection without resting endlessly in one space.

Beth Gibbeson

## About Beth Gibbeson

Beth Gibbeson is an abstract painter and lives in the Mornington Peninsula, Victoria. Beth completed a Bachelor of Fine Arts Painting (Honours) at RMIT and has since exhibited various commercial galleries.

Beth's artistic processes engages with shape, colour, and light to convey the evolving essence of the environments that have shaped her personal experiences of the landscape from past and present. The interlocking and separation of shape, light and colour continue to represent fresh interpretations of her memories that travel with her and become a dialogue of her life.





**Ablaze**

Oil on linen framed

155 x 139.5 cm

\$8,000





**Bedazzle**

Oil on linen framed

155 x 139.5 cm

\$8,000

An abstract painting featuring several hands and faces rendered in a style reminiscent of Vincent van Gogh's 'Olympia' or similar expressionist works. The hands are painted in various colors like red, yellow, and white, with some showing distinct fingers. The faces are partially visible, with some showing eyes and mouths. The background is a mix of dark green, blue, and brown tones, with visible brushstrokes throughout.

ESCAPADE

CHARLOTTE  
ALLDIS

@charlottealldis



“

As a painter, I explore the delicate and intense gestures of mark-making, weaving stories, dreams, and wounds into narrative forms. My art celebrates the human experience, capturing moments of joy, grief, and a longing for connection.

Combining lived experiences with imagination, I craft a fantasy world where adventurous lovers take center stage. From subtle strokes to bold gestures, my paintings narrate dreams and emotional odysseys, mirroring my journey with an invisible chronic illness. Balancing playfulness and grief, they bridge the gap between mind and reality, unveiling the escapades of intertwined lovers seeking solace and adventure in life's interconnectedness.

Charlotte Alldis

## About Charlotte Alldis

Charlotte Alldis is an early, career artist based on Wurundjeri Country, Naarm, Melbourne. Charlotte has held six solo shows and several group shows in the past five years and recently curated her first large-scale project, 'Between Painters', an experimental collaborative project of practice enquiry.

Charlotte has collaborated on two seasons for Australian fashion label Kuwarii, co-founded a community project, 'Making A Mess', facilitated ongoing workshops for artists at the DAX Centre, and facilitated a kid's program for the National Gallery of Victoria. Charlotte's work is held in various private collections in Australia and internationally and has been commissioned for workshops, festivals, private collections, murals, and commercial projects.

Charlotte has a background in mental health and has completed studies in both psychology and art therapy, both of which influence her practice.





**Possibility**

Acrylic and oil on canvas

95 x 122 cm

\$2,600



**The One to Wait**

Acrylic and oil on canvas

95 x 122 cm

\$2,600

ESCAPADE

CHARLOTTE  
SWIDEN

@charlotteswiden

An abstract background composed of various shades of dark blue, black, and grey, with some lighter, torn-paper-like edges. The overall effect is a textured, layered composition.

“

Mesmerised by the ever-changing colour-scape of the descending sun, I watch the landscape transform like an animated colouring book, swiftly replacing our familiar greenery with hues from a fantastical world. Slowly it swallows all blues and drenches it in warm tones, dissolving our sense of depth and perspective. A cosmic play of light marked by the waning of all cold tones. Isn't it fascinating how we readily accept this daily spectacle as routine? It's as if the universe, an artist of unmatched skill, effortlessly repaints our planet's palette with some simple strokes. And tomorrow, our ceiling will be blue once more, the clouds will return to be white. The sky preparing for its next performance.

Charlotte Swiden



## About Charlotte Swiden

Charlotte Swiden (b. 1980, Sweden) moved to Australia in 2005, settling in Melbourne/Naarm.

Drawing on personal reflections of her Scandinavian upbringing and her new home, Swiden's work has been shaped by the interplay of two identities, two cultures, and the tensions that lie between them.

In the soft discord of existence between two worlds, Swiden weaves themes of rituals, folklore, and modern life. Playing with ambiguity, she allows objects and figures to break and layer over one another – symbolically destabilising boundaries and reshaping them in their new environments. With a wistful and empathetic approach, Swiden's artworks eloquently depict the intricacies of the human experience.

Charlotte Swiden currently lives and works on Boon wurrung (Bunurong) land in Australia. She is represented by Saint Cloche Gallery in Sydney.





**Long Path Through The Atmosphere**

Acrylic, Impasto & Oil Pastel on canvas. Framed in Tasmanian Oak

77 x 55 cm

\$2,200

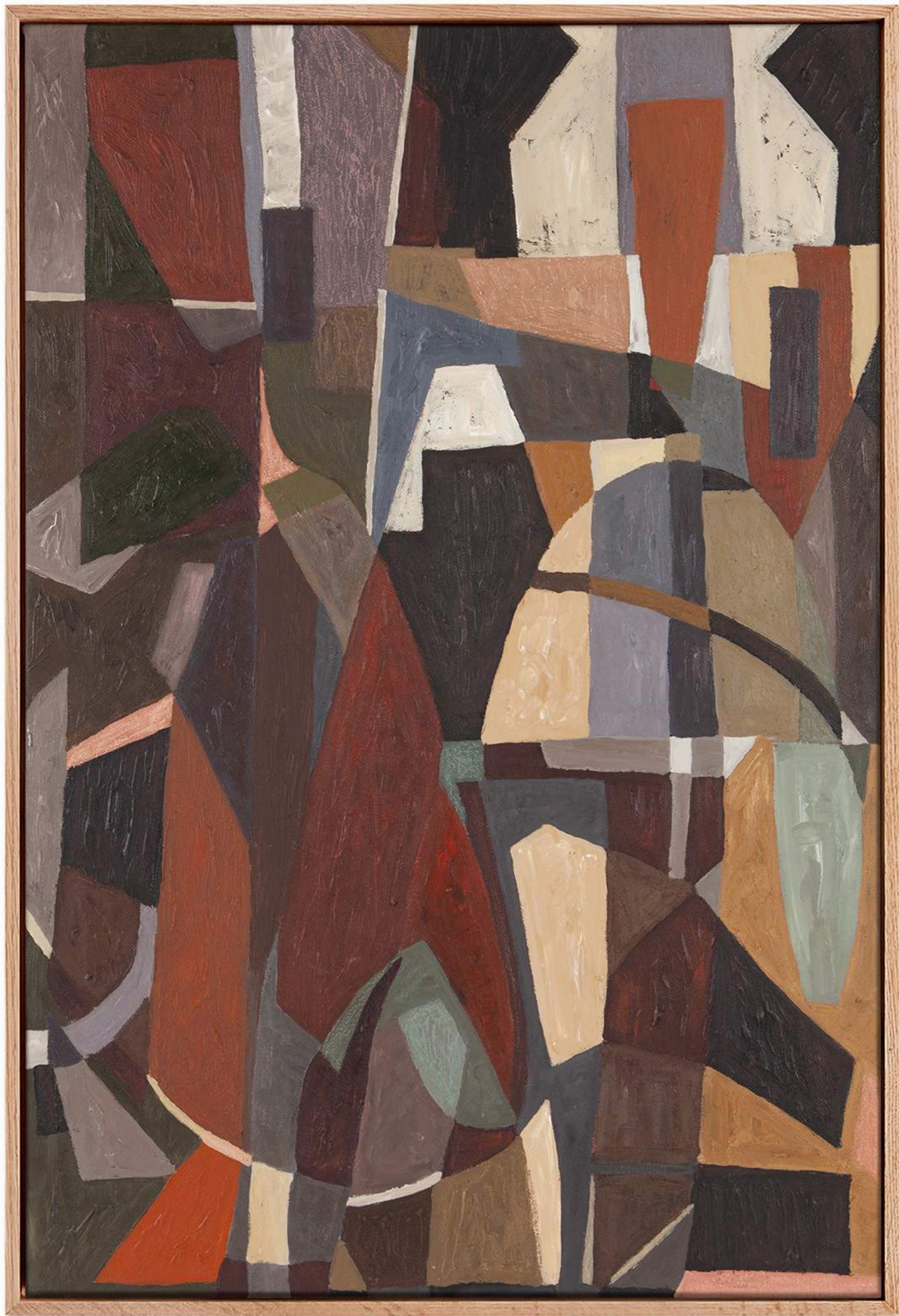


**Vanishing Horizons**

Acrylic, Impasto & Oil Pastel on canvas. Framed in Tasmanian Oak

77 x 55 cm

\$2,200



**Late Light In East**

Acrylic, Impasto & Oil Pastel on canvas. Framed in Tasmanian Oak

77 x 55 cm

\$2,200



**The Absence Of Blue**

Acrylic, Impasto & Oil Pastel on canvas. Framed in Tasmanian Oak

77 x 55 cm

\$2,200

ESCAPADE

DANIEL  
O'TOOLE

@daniel.otoole

“

My works for 'Escapade' are colour experiments that take our imagination where they will, unfold differently for each person. I am careful not to limit the feeling of a work to much with very specific names, but to keep them open ended and vague so that they hint at a feeling without overpowering its own voice that may be heard differently by each person.

Daniel O'Toole

## About Daniel O'Toole

Naarm (Melbourne) based artist, Daniel O'Toole makes multi-media works spanning sculptural colour-field paintings, video and sound. Having worked as a musician and trained as an audio engineer, Daniel plays a range of instruments and produces experimental electronic music that has been seamlessly integrated into his synaesthetic video works that appear to be moving versions of his paintings. The range of media and sensory modes of communication have come together to form an expansive practice that deals with natural phenomena.

Daniel has an almost scientific way of utilising technology and industrial fabrication processes to interface between humanity and the natural world. The result being as playful and unexpected as it is luminous and subtle.







**Towns Hum**

Dye Sublimation on medium, aluminium frame

110 x 100 cm

\$6,800



**Stereo Fields**

Synthetic polymer on Dibond panel, semi-transparent acrylic frame

112 x 92 x 7.5 cm

\$6,200



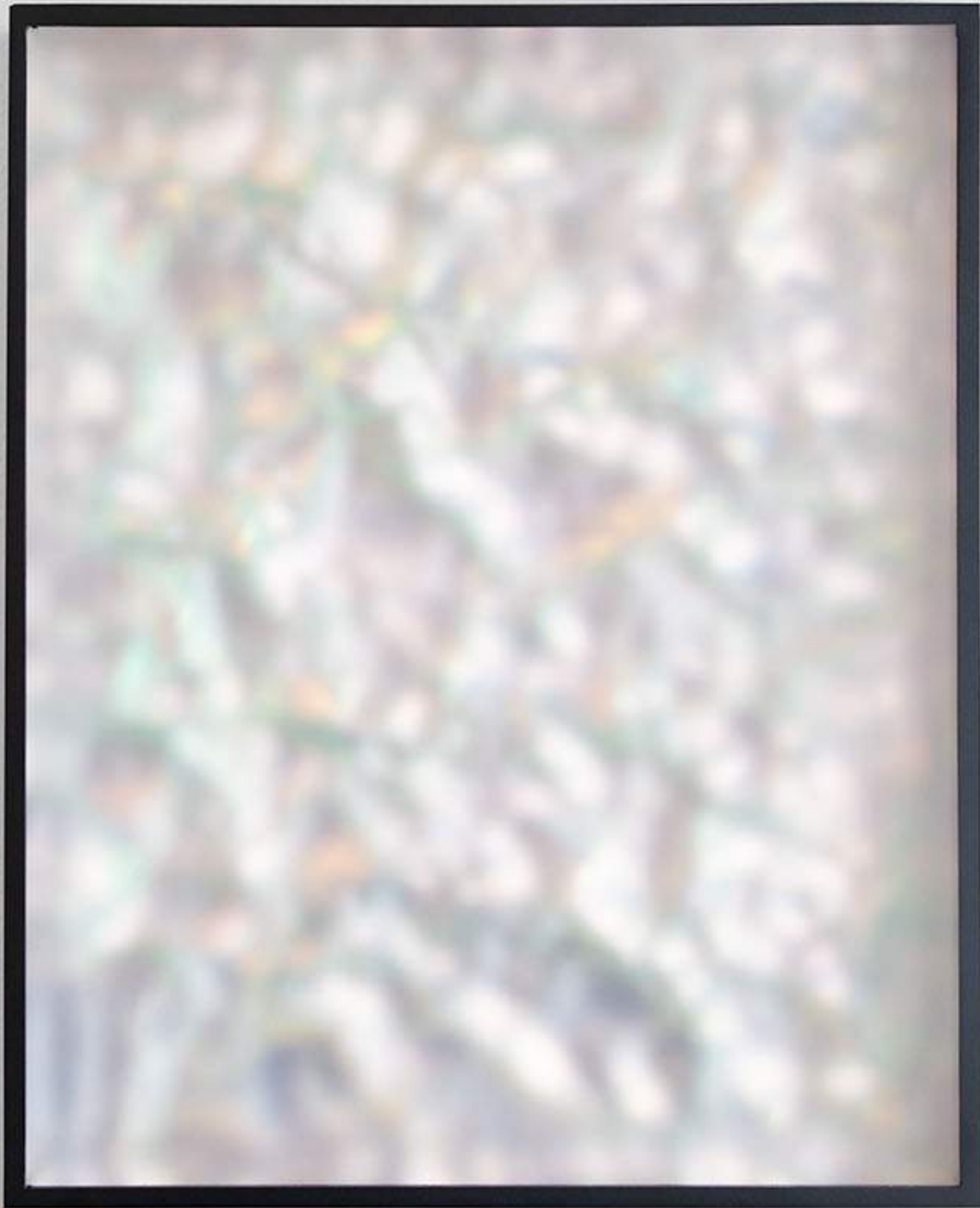


**Bright Earth**

Dye Sublimation on medium, aluminum frame

100 x 100 cm

\$6,200



**Light Emitter**

Dichroic film on aluminium form, custom welded aluminium frame, mirror inlay, acrylic face

51 x 41 x 10 cm

\$3,400

ESCAPADE

EMIMA  
LABATTAGLIA

@emma\_labattaglia



“

As a Contemporary Australian Artist based in Mornington Peninsula, I explore the contrast between the organic and synthetic worlds. My art reflects a personal, emotionally driven journey, questioning the superficial aspects of Western living. Using diverse materials like messy oil paint, collage, and spray paint, I juxtapose natural rawness with synthetic elements.

In the 'Escapade' show at Saint Cloche, I playfully depict natural elements like flowers, rain, and clouds using bright colors and repeating patterns, inviting viewers to reconsider their connection to the wild.

Emma Labattaglia

## About Emma Labattaglia

Emma Labattaglia is a Contemporary Artist with a background in Fine Arts Painting. She finished her studies in Melbourne-Australia, and Italy in 2003. Emma grew up from a young age watching her 'Opa' draw and paint in his backyard studio. With a cigarette hanging out of his mouth, he shared with her his creative world. Emma went on to create an illustration business, working in fashion and poster art.

Emma now resides in a coastal town about an hour from Melbourne, working out of her home studio surrounded by rugged ocean and bushland. She is intrigued by the organic beauty versus the manufactured beauty surrounding us. Emma explores the conflict she has with this reflection. By using a wide array of materials as well as presenting natural forms in a synthetic way, and vice versa, Emma presents her abstract view of the natural and man-made world.





**Close your Eyes and Count to 10**

Oil paint, oil stick, charcoal on canvas. Framed in Tasmanian oak

50 x 40 cm

\$1,500





**It's my Garden**

Oil paint, oil pastel, charcoal, collage, spray paint on canvas

40 x 30 cm

\$1,200



**Ring a ring a rosie**

Oil paint, oil stick, charcoal on canvas. Framed in Tasmanian oak

30 x 20 cm

\$950



**A pocket full of posies**

Oil paint, oil stick, charcoal on canvas. Framed in Tasmanian oak

30 x 20 cm

\$950



**Your Eyes are so Green**

Oil paint, oil stick, charcoal on canvas. Framed in Tasmanian oak

15 x 10 cm

\$550



ESCAPADE

EMMIA

LIPSCOMBE

@emmalipscombe\_

An abstract geometric painting featuring a grid of squares and rectangles in various colors: red, green, blue, grey, and yellow. The shapes are arranged in a way that creates a sense of depth and movement. A large red semi-circle is visible in the top left, and a yellow semi-circle is in the top right. The background is a mix of these colors, with some areas appearing darker than others.

“

This exhibition is right up my alley and what we need right now.

These paintings form part of my ongoing study of colour, pattern, space, and scale. Grouped and simplified shapes, repetition in pattern and simple forms all with varying colour exploration form the basis of my practice. Often harmonious outcomes though sometime not, it's a never-ending ritual that I'm happy to endure.

Emma Lipscombe

## About Emma Lipscombe

Deeply immersed in design throughout her life via art, interiors, landscape, architecture and design, Lipscombe's works fuse the hard-edged tangible absolute with the painterly. Her interest lies in the confluence of geometric shape and colour, and in the transformative ritual of simplifying, sampling, re-mixing, and re-working them.

Utilising skills honed through her work as a Landscape Architect on projects as far afield as London, Thailand and Beirut, Lipscombe's works bring together a designer's eye for order and scale with the artist's rich understanding of colour and luminosity.





**The Relics en grande**  
Oil on Board  
117 x 78 cm  
\$4,500

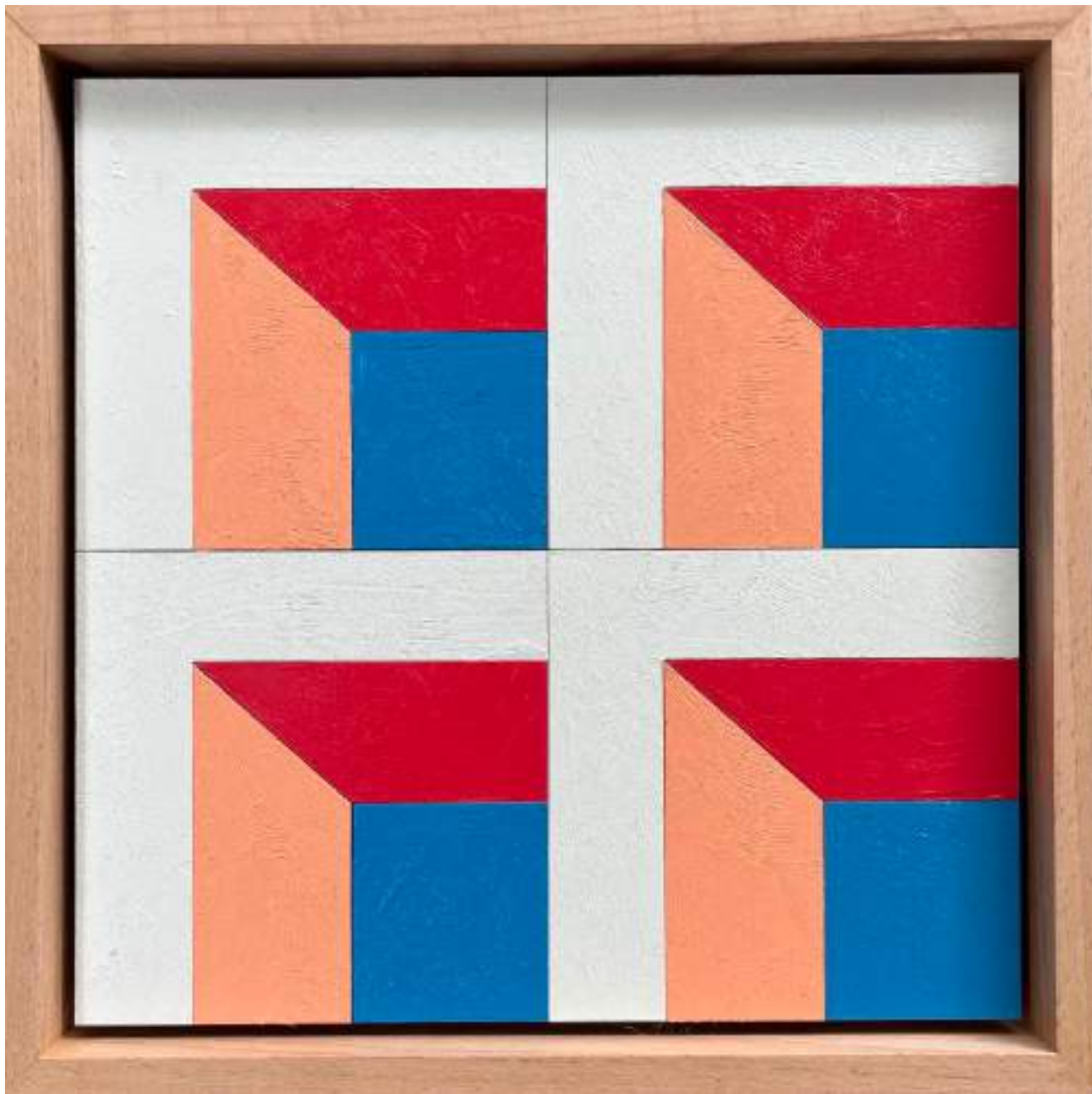




**Fresh fruit**  
Oil on Board  
27 x 29 cm  
\$880



**En plus #01**  
Oil on Board  
22 x 22 cm  
\$650



**En plus #02**  
Oil on Board  
22 x 22 cm  
\$650



ESCAPADE

HANNAH  
LANGE

@hannahlange.art

“

Exploring what these colours mean to me! How Country gifts us colour in ways that are almost impossible to recreate! From the strongest of tones to the most subtle. How seeing a shade of colour can always bring us back to Country, a form of escapism and our natural urge to reconnect with her!

Hannah Lange

## About Hannah Lange

Hannah is a proud Wiradjuri Woman. A self-taught artist telling stories of nature through art. Hannah was born and raised in the Blue Mountains on Dharug/Darug and Gundungurra country. This land has a huge influence on her work until this day. Her pieces often encompass the sweeping landscapes filled with native bushland, rivers and layered sandstone cliff faces that she once called home.

Hannah now resides on Bundjalung Country where she has infinite inspiration from the surrounding forest and coastlines. Hannah's central aim is to capture the intricate parts of nature that often go unseen, drawing attention to the beauty it has to offer. Highlighting the innate deep connection of First Nations peoples to the land, Hannah's special relationship with the land and her art practice is what keeps her connected to her culture, ancestors and to Country.





**Birrang - Blue Sky**

Acrylic on cotton canvas

150 x 120 cm

\$7,500



**Ngurrumirgan Gadhag- Blue Ocean**  
Acrylic on cotton canvas  
122 x 97 cm  
\$5,200





**Gumba Dhalawa - Green Forest Country**  
Acrylic on cotton canvas  
90 x 66 cm  
\$4,400



ESCAPADE

JOSHUA  
SEARLE

@joshua\_searle\_art



“  
In my ongoing series, 'Stolen Gold,' inspired by the Quimbaya gold figure, I explore my Australian-Colombian identity, critiquing colonial practices in institutions like the British Museum. Commissioned by the Mornington Peninsula Regional Gallery, 'Am (I Am Not Yours)' is a vibrant ode to strength, featuring the Olmec Head and provoking contemplation on cultural context.

'Oro robado' unveils a Colombian golden mask boldly declaring 'Stolen Gold' in Spanish, a striking reflection on stolen artifacts. Through these works, I invite viewers to journey beyond aesthetics, engaging with profound narratives of diasporic history, cultural displacement, and the complexities within our global heritage.

Joshua Searle

## About Joshua Searle

Mornington Peninsula native Joshua Searle, primarily a painter, explores socio-cultural issues and diasporic identity using acrylic, oil stick, oil pastel, enamel, and spray paint on canvas. His work confronts issues while celebrating Black excellence and his Colombian heritage, employing figurative repetitive figures to adapt meaning within diverse contexts.

Notable achievements include commissions with the Mornington Peninsula Regional Gallery, participation in the Archibald Prize Exhibition 2023, and a finalist position in the Sir John Sulman Prize at AGNSW in 2023. Searle's impactful exploration of identity and culture is showcased in large-scale solo exhibitions, including the recent collaboration 'I'm Sick of Being Polite' with Melbourne fashion house Monphell.





**Gold figure (Quimbaya, Colombia)**  
Acrylic and ink on canvas  
136 x 109 cm  
\$3,000



**Am (I Am Not Yours)**

Acrylic and aerosol on canvas

151 x 121.5 cm

\$2,750



**Oro robado**

Oil stick and enamel on linen

50 x 40 cm

\$550



ESCAPADE

KATIE  
MANEKSHAW

@molluskandstone



“

Continuing my artistic journey, I passionately explore the interplay of color, texture, and form in hand-built structures inspired by aerial landscapes. Using bold reactive slips and hand-painted glazes, I create delightful expressions of textural pigment.

My primary inspiration lies in exploring the intricate relationship between the macro and microcosms of the cosmos, drawing visions from nature's constant cycle of creation and destruction.

Art is my spiritual meditation, channeling a kind of love into the world and connecting me to a higher purpose. Hypnotized by coastal living, my deep connection to the ocean, fostered through diving, reveals the infinite visual magnificence of underwater realms.

Katie Manekshaw

## About Katie Manekshaw

Katie Manekshaw, a UK-born artist and entrepreneur, holds a degree in Photography and Business Studies from Lancashire University. With a background in fine arts and advertising, she served as a creative and art director in major global advertising agencies for a decade. As a creative entrepreneur, she successfully built two business brands.

Katie's artistic endeavors include exhibitions of her jewelry designs and paintings across North America and Europe. She has also authored a children's book of poetry on endangered animals, featured in an art exhibition at The Royal Randwick Children's Hospital. Recently delving into ceramics, Katie is currently based on Gadigal land (Sydney) and operates from her home studio and The Claypool Group in Botany.





**Ghost Gum**

Stoneware with hand painted glaze

37 x 22 x 20 cm

\$1,500



**Big Blue**

Stoneware with hand painted glaze

20 x 30 x 35 cm

\$1,500



**Tacos Bubble Bowl**

Stoneware with hand painted glaze

10 x 30 cm

\$850



**Rockpool Round Dish**

Stoneware with hand painted glaze

10 x 32 cm

\$800



**Bubble Ray Bowl**

Stoneware with hand painted glaze

9 x 27 cm

\$650



**Ivory Bubble Dish**

Stoneware with hand painted glaze

5 x 33 x 32 cm

\$600



**Spotted Ray**

Stoneware with hand painted glaze

8 x 28 x 30 cm

\$500





**Deep Blue Bowl**

Stoneware with hand painted glaze

10 x 28 x 22 cm

\$350



**Ocean Leaf Dish**

Stoneware with hand painted glaze

6 x 15 x 12 cm

\$200

ESCAPADE

LEANNE XIU  
WILLIAMS

[@leannexiu](#)

“

In response to 'Escapade,' I've created a series of artworks that serve as a visual exploration of colour and its relationship to human introspection.

Private moments border on the surreal and are expressed in muted tones to convey the quiet emotional resonance of certain colour palettes and similarly invite the viewer into a state of contemplation.

Leanne Xiu Williams

## About Leanne Xiu Williams

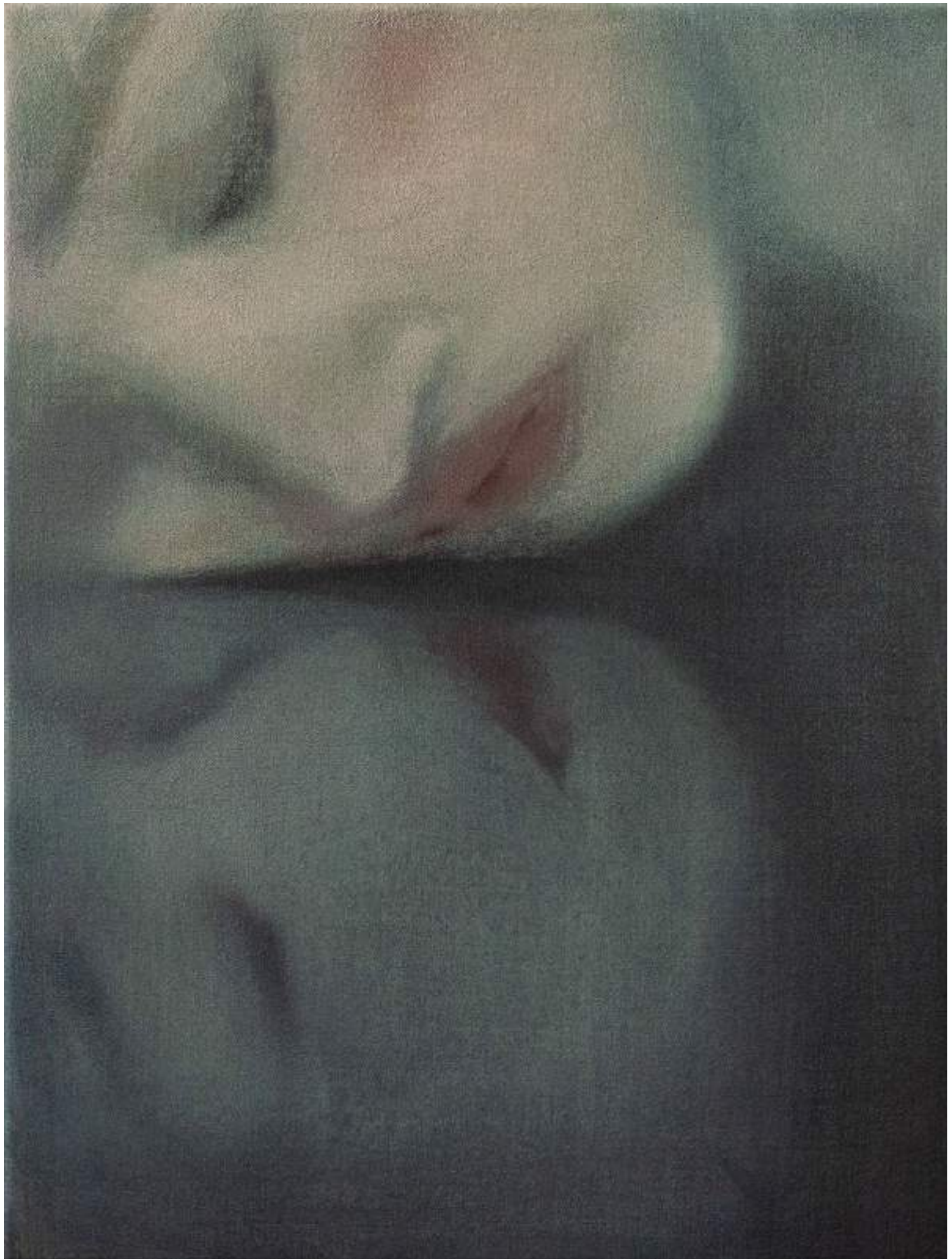
Leanne Xiu Williams, an emerging artist based on Gadigal land (Sydney), is a self-taught painter and Art History graduate from the University of Sydney. Inspired by human connections, she explores still life, portraiture, and figurative work, aiming to capture intimate moments through the interplay of light and shadow.

Her art alludes to experiences beyond representation, invoking memories, dreams, and sensations. Most recently collaborated with Two Good Co on their third book 'Change the Course, has been featured in The Design Files, and a finalist in the Portia Geach Memorial Art Award, Leanne is represented by Saint Cloche gallery.

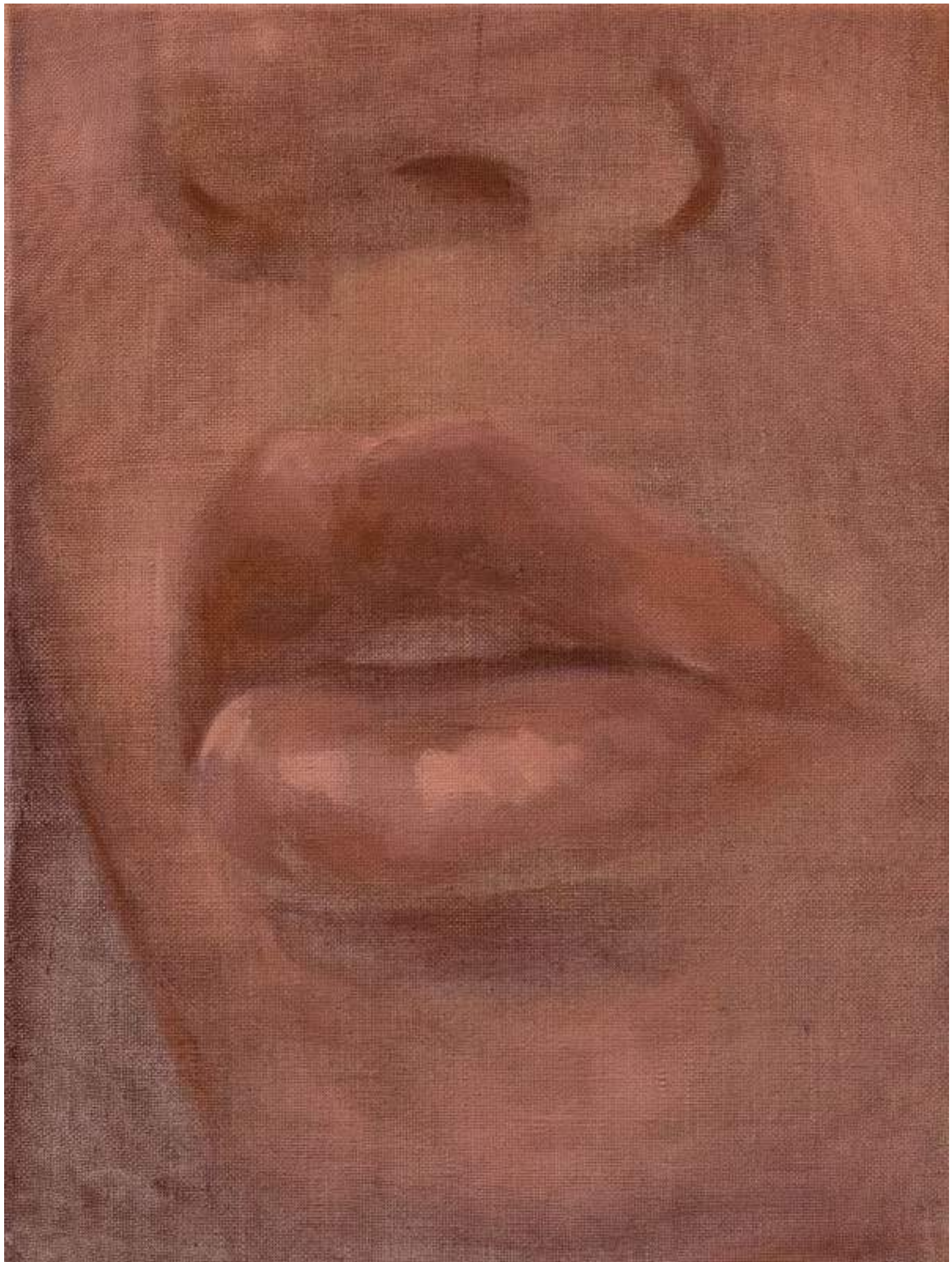




**Golden Hour**  
Oil on linen  
40 x 30 cm  
\$800



**Waxing and Waning**  
Oil on linen  
40 x 30 cm  
\$800



**A Gentle Breeze**  
Oil on linen  
40 x 30 cm  
\$800



**Moonlight**  
Oil on linen  
40 x 30 cm  
\$800





**Spring Lingers**  
Oil on linen  
40 x 30 cm  
\$800

ESCAPADE



NATALIE  
SYNNOT

@sin\_not



“

These works use color as a storytelling vehicle, drawing viewers in with the glistening allure of ceramics. Beyond the initial curiosity, they reveal running figures in distress, creating a tragicomic exploration of human anxieties. The saccharine color palette juxtaposed with themes of unease reflects the battle between reality and our internal world. The ceramic faces act as preserved moments, each color block resembling a chapter in the book of life. In my sculptural pieces, a moment of reprise emerges, almost meditative, as they submit to abstraction and the melding of colors, transcending the trappings of ego and memories.

Natalie Synnot

## About Natalie Synnot

Natalie Synnot (b.1994 Sydney, Australia) uses painting, ceramics and installation to create saccharine worlds that explore modern anxieties and existential dread through a slapstick-tragic lens.

Anecdotal and absurd; garish figures crawl and stumble through personal narratives and metaphors littered with poetry; reading like a love letter to being alive and a study of the angst and humour that accompanies.





**Pond Therapy**  
Clay, earthenware glaze  
37 x 41 x 13 cm  
\$1,800



**Pulverised Fever Dream**  
Clay, earthenware glaze  
21 x 40 x 21 cm  
\$850



**What Doesn't Kill Me Lives Within Me**  
Clay, earthenware glaze  
30 x 22 cm  
\$570



**Flow state Paranoia**  
Clay, earthenware glaze  
26 x 21 cm  
\$550



**Unlyrical Crush**  
Clay, earthenware glaze  
27.5 x 24 cm  
\$550

**The Month of Aries**  
Clay, earthenware glaze  
29 x 25 cm  
\$550

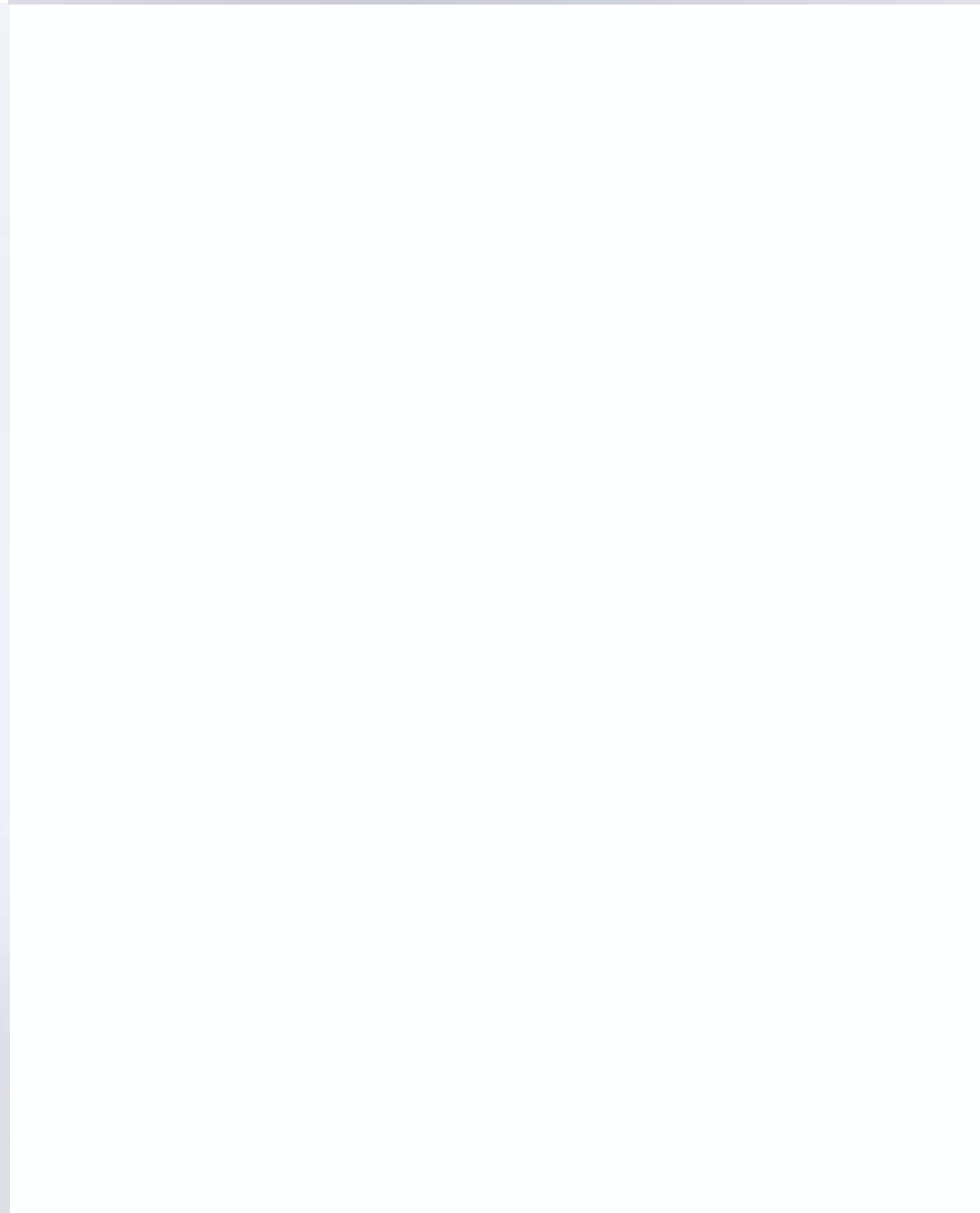




**Clown Girl Forever**  
Clay, earthenware glaze  
30 x 26.5 cm  
\$570



**Perpetual Runaway (life fitness)**  
Clay, earthenware glaze  
27.5 x 21 cm  
\$520



**Showing You My Good Side Only**  
Clay, earthenware glaze  
26 x 20 cm  
\$460

**Missing You Missing Me**  
Clay, earthenware glaze  
29 x 23 cm  
\$570



**Self Punk'd into Submission**  
Clay, earthenware glaze  
30 x 23 cm  
\$520



**Flavour Rage**  
Clay, earthenware glaze  
28 x 22 cm  
\$460

ESCAPADE

NIKOLAUS  
DOLMAN

@nikolausdolman

“

Certain colors trigger memories, serving as snapshots of past events. From house parties to street posters, I capture my first impressions in sketches, samples, or on my phone.

My recent artworks, "Midnight Purple, 2023" and "Heat Wave / Prime Real Estate, 2023," are collages of these impressions. The former, inspired by a smoky dinner party with a Prince music video, combines American pop culture and wavy typographical simulation. The latter is a mash-up influenced by covid lockdown television, doomsday scrolling, and rising temperatures, with architectural edges reflecting a brooding and contemplative atmosphere.

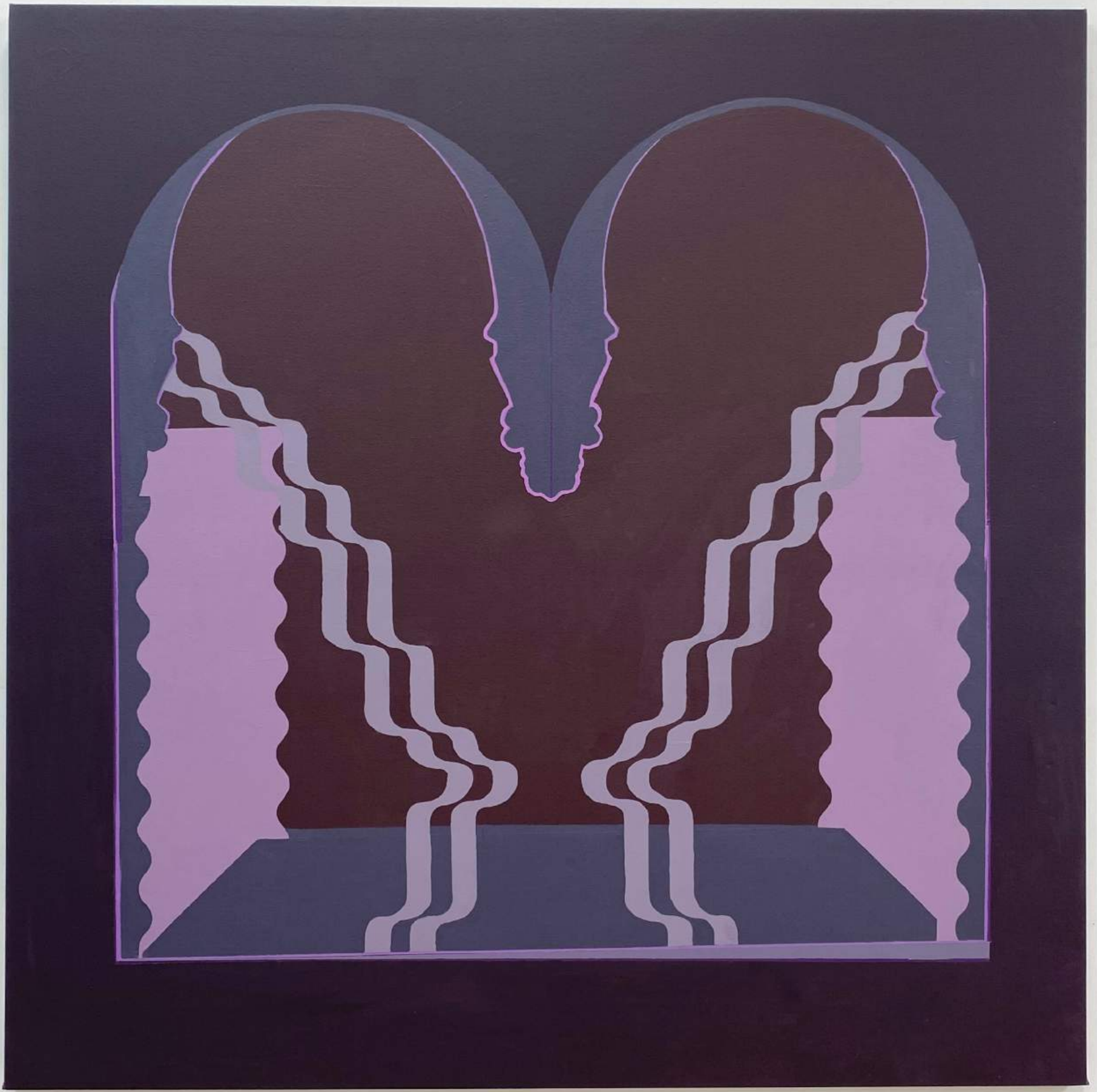
Nikolaus Dolman

## About Nikolaus Dolman

Nikolaus Dolman, b. 1987. Currently lives and works in Naarm/Melbourne, Australia. Nikolaus Dolman is an artist and arts worker, he holds a Bachelor of Fine Art specialising in printmaking at Southern Cross University, Lismore, NSW and a Master of Art Administration from the University of New South Wales Art & Design, Sydney.

Dolman's work spans across painting, printmaking, sculpture, and collage. He explores notions of the immediacy and disposability of consumer culture. He investigates our current relationship with the conventions of advertising and public space by considering representation, excess and necessity, product, and production.





**Midnight Purple**

Synthetic polymer paint & binder on board, framed

150 x 150 cm

\$5,500



**Heat Wave / Prime Real Estate**

Synthetic polymer paint & binder on board, framed

122 x 92 cm

\$3,800





ESCAPADE

NUNZIO  
MIANO

@nunziomiano

An abstract painting featuring vibrant, expressive brushstrokes in shades of blue, red, and white. The composition is dynamic, with thick, layered applications of paint creating a sense of movement and depth. The colors are rich and saturated, contrasting sharply against a dark, almost black background. The overall effect is one of raw energy and emotional intensity.

“

‘Heads’ is a body of work asking the viewer to pause for a moment, feel and connect.

My aim was to use vibrant commanding colours to illicit a series of emotions from the viewer. A variety of simple and quick brush marks can create such diverse and interesting responses.

The range of emotions reflect our current world, where we can feel highs and lows instantaneously with a very simple swipe of a news feed. The strong vibrant blue commands attention which contrast with the subtle softer blush hues.

Nunzio Miano

## About Nunzio Miano

Fuelled by his never-ending creative energy, Nunzio Miano has been fascinated with themes of identity, belonging and human connection. Nunzio's work explores his personal journey, reflecting on his cultural heritage and upbringing, and particularly the idea of multi-generational residual themes.

Nunzio's work ranges from figurative to abstract. Brightly coloured and expressive works contrast with dark and melancholy pieces exploring distortion and emotion. His last 5 solo exhibitions have been sell-out shows. Nunzio began his tertiary studies in Visual Arts at the University of Melbourne. He then graduated with a Bachelor of Arts in Graphic Design from Monash University, Melbourne. He has most recently completed studies in Florence Italy and an Artist Residency at Residenza il Palmerino in the Florentine hills.





**Complacent head**

Polymer on cotton canvas, framed in teak coloured box frame

40 x 30 cm

\$1,950

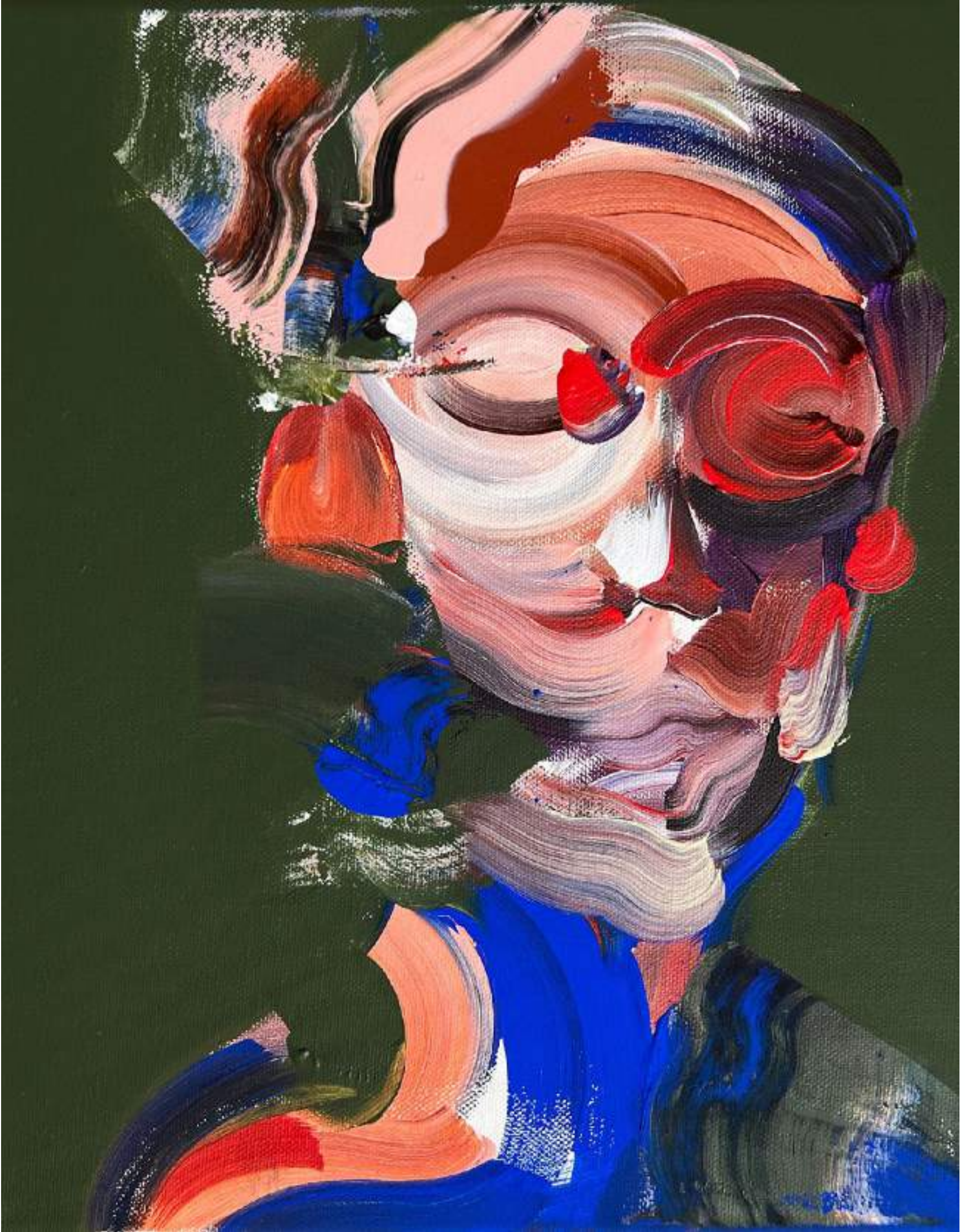


**Meditative head**

Polymer on cotton canvas, framed in teak coloured box frame

40 x 30 cm

\$1,950



**Introspective head**

Polymer on cotton canvas, framed in teak coloured box frame

40 x 30 cm

\$1,950

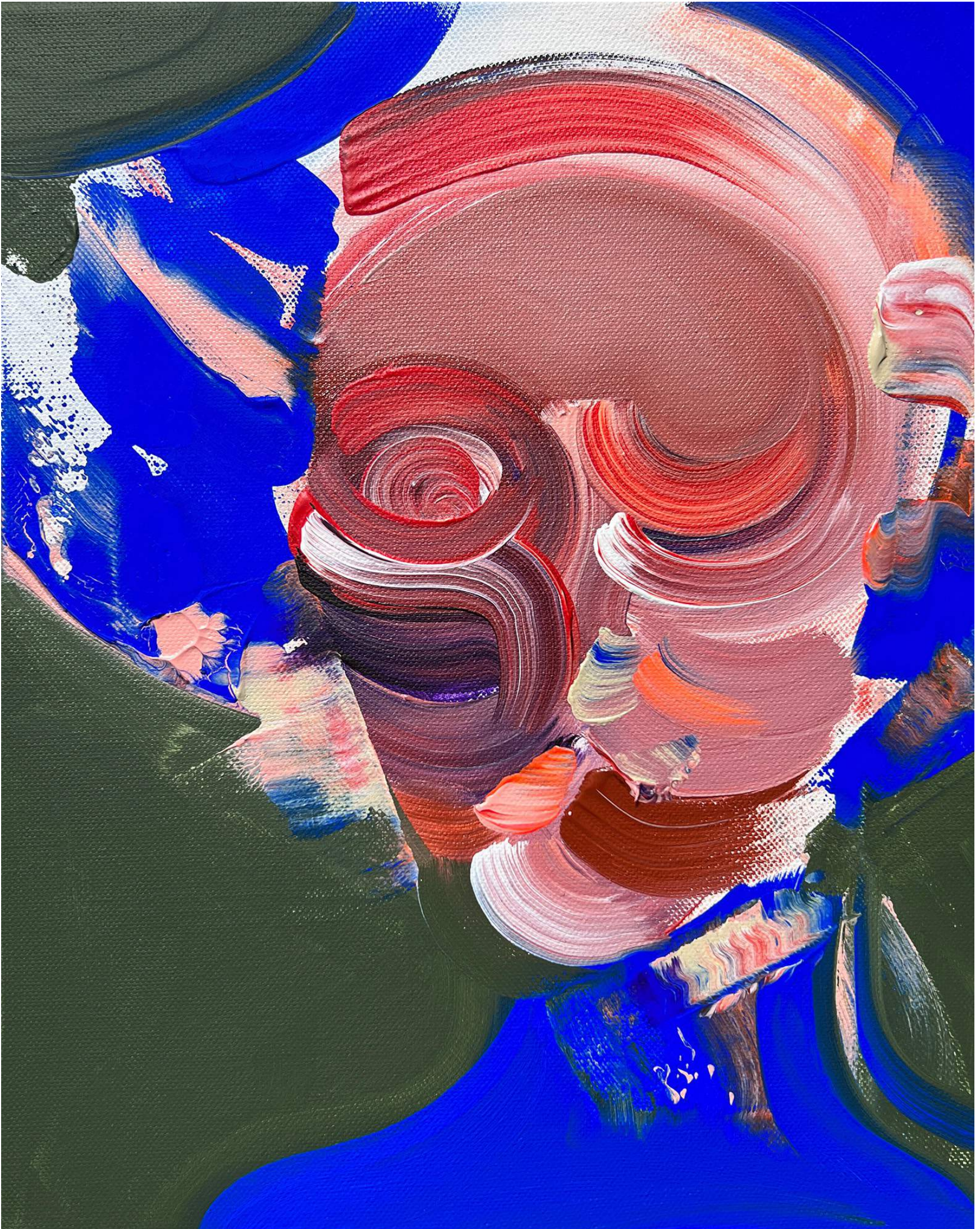


**Self obsessed head**

Polymer on cotton canvas, framed in teak coloured box frame

40 x 30 cm

\$1,950



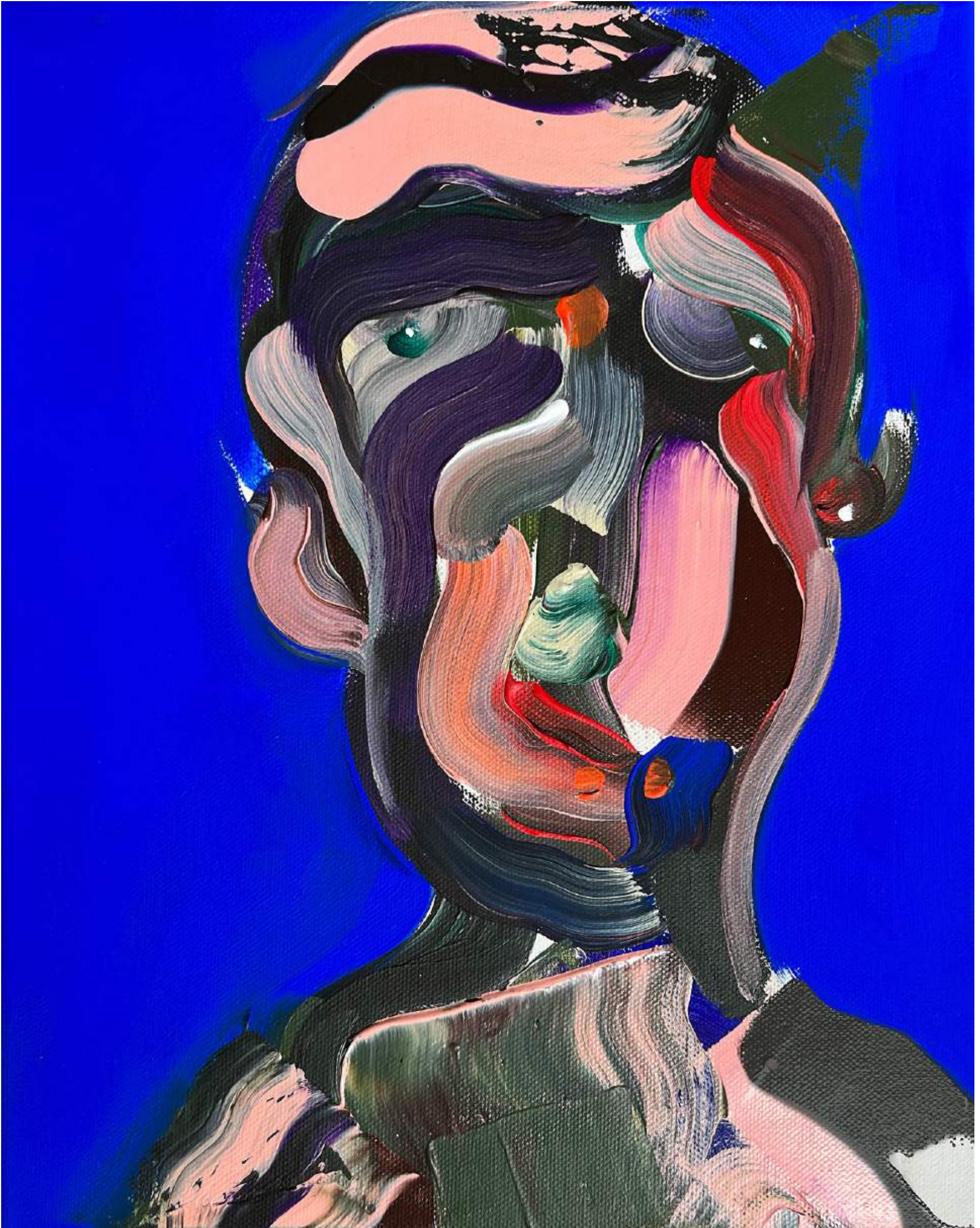
**Glamorous head**

Polymer on cotton canvas, framed in teak coloured box frame

40 x 30 cm

\$1,950





**Attentive head**

Polymer on cotton canvas, framed in teak coloured box frame

40 x 30 cm

\$1,950

ESCAPADE

RIA GREEN

@ria.m.green

A dimly lit artist's studio. In the foreground, a person's hand is visible, holding a brush and painting on a large sheet of paper. The background is filled with various art supplies, including numerous jars and containers of paint in various colors, some of which are open. The overall atmosphere is quiet and focused, with soft lighting highlighting the textures of the paint and the artist's work.

“

My work embraces colour, light, and texture as a pathway through uncharted realms. I investigate how our environment influences our spiritual, emotional, and physical being, expressing these explorations through abstract representations. Through a focus on colour and light, my art captures fleeting moments of wonder found in nature's marvels, inviting viewers on a journey of contemplation and connection.

Ria Green

## About Ria Green

Ria Green, a Melbourne-based multidisciplinary artist, delves into the impact of the environment on the spiritual, emotional, and physical self. Her abstract representations of ephemeral moments in the natural world, created through the meticulous use of color and light in painting, form the core of her practice.

Holder of a Master of Fine Art from RMIT University (2013) and a Bachelor of Art with Honours (Fine Art) from RMIT University (2007), Green has exhibited nationally and internationally since 2007, with showcases in Turin, Italy, and Marnay-sur-Seine, France, among others. Local exhibitions include Seventh Gallery, Blindside Gallery, and Counihan Gallery. Her exploration of materiality and methods has been enriched through artist residencies in Portugal, Argentina, and Italy. Notably, Green's work is part of esteemed collections, including the State Library of Victoria, National Library of Australia, RMIT University, and various private collections.



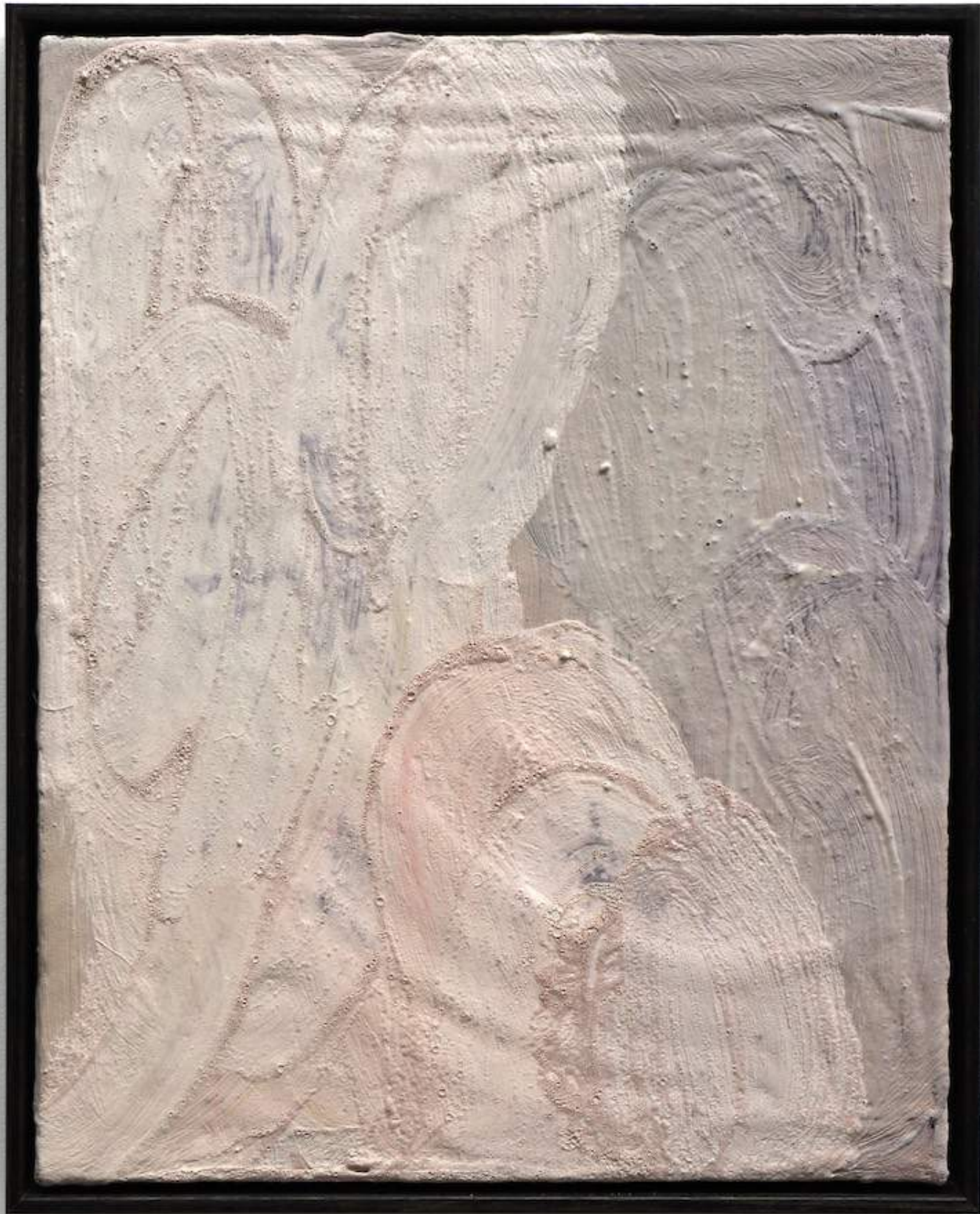


**Ultraviolet**

Gouache, water colour, pigments, oxide, dye, plaster, textile, board. Framed in Victorian Ash.

52 x 39 cm

\$1,500



**Cumulus**

Gouache, water colour, pigments, oxide, dye, plaster, textile, board. Framed in Victorian Ash.

44 x 35 cm

\$1,100



**Rivers & Lakes**

Gouache, water colour, pigments, oxide, dye, plaster, textile, board. Framed in Victorian Ash.

44 x 35 cm

\$1,100



**Radiant Nature part 95**

Gouache, water colour, pigments, oxide, dye, plaster, textile, board. Framed in Victorian Ash.

38 x 29 cm

\$990





**Tides**

Gouache, water colour, pigments, oxide, dye, plaster, textile, board. Framed in Victorian Ash.

34 x 27 cm

\$990



**Dreaming of you**

Gouache, water colour, pigments, oxide, dye, plaster, textile, board. Framed in Victorian Ash.

34 x 25 cm

\$990



ESCAPADE

SARANA  
HAEATA

@saranahaeata

A woman with short dark hair, wearing a light blue button-down shirt and light blue jeans, is sitting in a wicker chair. She is smiling and looking towards the right. The background is a large, vibrant abstract painting with various colors like blue, orange, red, and white, featuring circular and organic shapes. The overall scene is dimly lit, with the text overlaid in white.

“

It escaped at sunrise. A slow, sly shift. Its hunched, heavy folds moving towards an adventure promised by the empty sky. It wanted to rush from one side of the earth to the other, its edges skimming the ground like hot feet on the pavement. It shouted at the sleepy houses “You are not adults! You are grown kids!”

It swam beneath the clouds until the sun sucked the haze through shiny teeth, revealing its treasure. Like the ocean lifts its skirt at low tide.

This series of works came from a singular 4 meter painting that was then cut into sections. The ever morphing colour journeys from one end of the canvas to another, unfolding like a story. Now that this story has been broken into parts and will live its lives in seperate homes it will forever be connected to its siblings.

Sarana Haeata

## About Sarana Haeata

From her studio in the remote Australian central desert of Alice Springs, Sarana Haeata explores the beauty and nuances held in shared stories, collective and individual identity, with a particular focus on the female experience.

In the last 12 months, Haeata has been commissioned by The Gardener Museum in collaboration with The Boston Globe, and in 2022 her work was exhibited in New York and Miami. Striking a chord with audiences far and wide, her poignant and highly-sought-after work was also collected by Randi Zuckerberg, Reese Witherspoon and Paris Hilton last year.





**Low Tide**

Acrylic and sand on canvas

160.5 x 141.5 cm

\$8,600



**Hot Feet On The Pavement**  
Acrylic and sand on canvas  
167.5 x 86.5 cm  
\$7,000



**Escape at Sunrise**

Acrylic and sand on canvas

167.5 x 61 cm

\$6,500





**Grown Kids**

Acrylic and sand on canvas

77.5 x 41 cm

\$2,000



**Empty Sky**

Acrylic and sand on canvas

78.5 x 34 cm

\$2,000

ESCAPADE

SONIA GILL

@soniagillartist

“

By mending and revitalizing discarded fabric, my work transforms textiles through thoughtful processes of painting, dyeing, and sewing. Each piece explores material sensitivity while narrating a color journey inspired by my Indian heritage. White represents mourning and transcendence during cremation rituals. "Samsara" features charred fabric as a relic of a changed state. Yellow, the color of turmeric-dyed silk, symbolizes healing and vibrational energy reminiscent of a "hazy Varanasi sunset." Green, linked to the heart chakra and the Sanskrit root Nad, embodies the ebb and flow of life's energy in "Nāḍī." Grey signifies the haze of India's most polluted cities, contrasting with the vibrant dapples of color in "Mumbai markets."

Sonia Gill

## About Sonia Gill

Sonia Gill, founder of the multidisciplinary label SUMU, brings a wealth of experience from her origins in London. Armed with a Bachelor's degree in Textile Design, she immersed herself in the industry before making a transformative move to Naarm/Melbourne, where she established her own studio. This relocation has fueled Sonia's commitment to pushing creative boundaries in the vibrant cultural landscape of her new home.

SUMU stands as a testament to her unwavering dedication to multidisciplinary art and her unique fusion of cultural influences.





**Hazy Varanasi Sunset**

Gradient Dyed and Stitched Dupion silk

107 x 97 cm

\$3,200



**Hazy Nādī**

Dyed and stitched linen with gold thread

90 x 80 cm

\$2,800



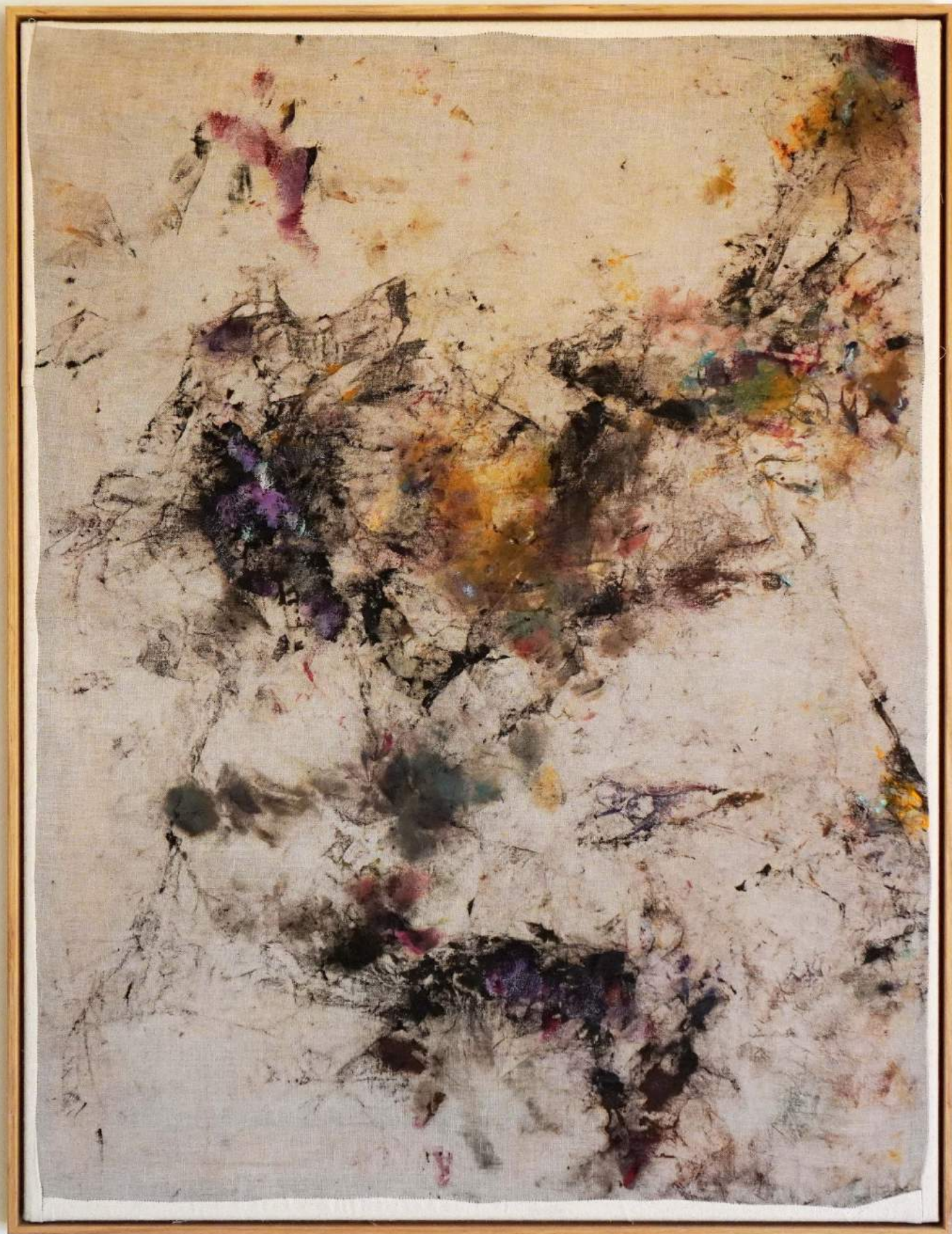
**Samsara**

Charcoal and acrylic on layered habotai silk, linen and cotton, raw Vic ash frame

87 x 66 cm

\$2,600





**Mumbai Markets**

Oil paint on stitched avocado-dyed linen, Raw Vic ash frame

87 x 66 cm

\$2,600

ESCAPADE

VALERIE  
VIGAR

@son\_ra\_\_ceramics



The use of colour in this work was influenced by past travels and adventures to the Caribbean - Spirited, optimistic and always vibrant...when I see colour I can hear music...colour is exciting.

Lamps are theatrical and suggest an eccentricity - with a feeling of ' a Mardi Gras has come to town'.... Calypso inspired and exaggerated "head pieces" (shades) with punchy crystal glazes.

Wall Reliefs have an organic nature with vibrant non traditional wall work colours... and sculpturally they are abstract profiles of iconic women with elaborate coifs such as Amy Winehouse and Susie Wong.

Valerie Vigar

## About Valerie Vigar

Valerie, a Gadigal/Sydney-based ceramic artist, initially trained as a fashion designer, completing a Diploma in Fashion Design at East Sydney Technical College. Currently pursuing a Diploma of Ceramics, her artistic journey encompasses a background in styling at Vogue Australia, where she later served as Fashion Director for Elle Australia and contributed to local titles like Marie Claire and Instyle.

Drawing on her extensive travels and fashion background, Valerie experiments with materials, color, and silhouettes, infusing her work with influences from past and present adventures. Her playful classical forms tell unique narratives, influenced by a deep fashion muscle memory for color and silhouettes. In her creative space, shared with the occasional possum, each work stands alone or is part of a small series.





**White Face wall relief work**  
Raku grog clay with glaze  
40 x 23 cm  
\$1,100



**Colour Face wall relief work**  
Raku grog clay with glaze  
38 x 22 cm  
\$1,100



**Pale Face wall relief work**  
Raku grog clay with glaze  
35 x 20 cm  
\$990



**Yellow Face wall relief work**  
Raku grog clay with glaze  
35 x 21 cm  
\$880





**Orange Sun lamp**

Raku clay with glaze, raffia lampshade, brass fittings ( ED bulbs only)

69 x 21 cm

\$2,200





**Yellow Havana lamp**

Raku clay with glaze, raffia lampshade, brass fittings ( ED bulbs only)

74 x 21 cm

\$2,200



**Curacao lamp**

Raku clay with glaze, raffia lampshade, brass fittings ( ED bulbs only)

52 x 29 cm

\$2,200





**Pink Flower lamp**

Raku clay with glaze, raffia lampshade, brass fittings ( ED bulbs only)

47 x 28 cm

\$1,650





**SAINT CLOCHE**

37 MACDONALD STREET PADDINGTON NSW

[SAINTCLOCHE.COM](http://SAINTCLOCHE.COM)