



Shark FlexStyle™

Air Styling & Drying System

STYLING GUIDE



Get to know your Shark FlexStyle™ Air Styling & Drying System.



Table of Contents

- How it Works 1
- Transform from Styler to Dryer 2
- Get to Know Your Stylers 3
- Auto-Wrap Curlers 4-5
- Oval Brush 6-7
- Paddle Brush 8-9
- Styling Concentrator 10-11
- Curl-Defining Diffuser* 12-13

*Sold separately

How it works



TIP: All 3 red Temperature lights will be OFF when **Cool Shot** is engaged.

Transform from styler to dryer.

Rotates to change modes

Styling Wand Mode / Hair Dryer Mode

Attach in Wand Mode



Attach in Dryer Mode



*Sold separately

Get to know your stylers.

- 1 Auto-Wrap Curlers**
Hassle-free curls in seconds.

 - Uses air power to automatically wrap hair around the barrel, from ends to roots
 - 2 curler barrels to create curls in both directions
- 2 Oval Brush**
Smooths & defrizzes, adds volume & bounce

Smoothing bristles—on the rounded edge for grabbing, smoothing, and shining

Detangling bristles—in the middle for combing and detangling
- 3 Paddle Brush**
Straighten & smooth all at once

Smoothing bristles—to create added tension for straightening, smoothing, and shining

Detangling bristles—for combing and detangling
- 4 Styling Concentrator**
Style & dry at the same time

Rotates for easy styling
- 5 Curl-Defining Diffuser**
Fast, even drying from root to tip

Use the lever to extend or retract the prongs for a customizable air flow

Extended prongs—for longer, thicker hair or reaching and lifting the roots

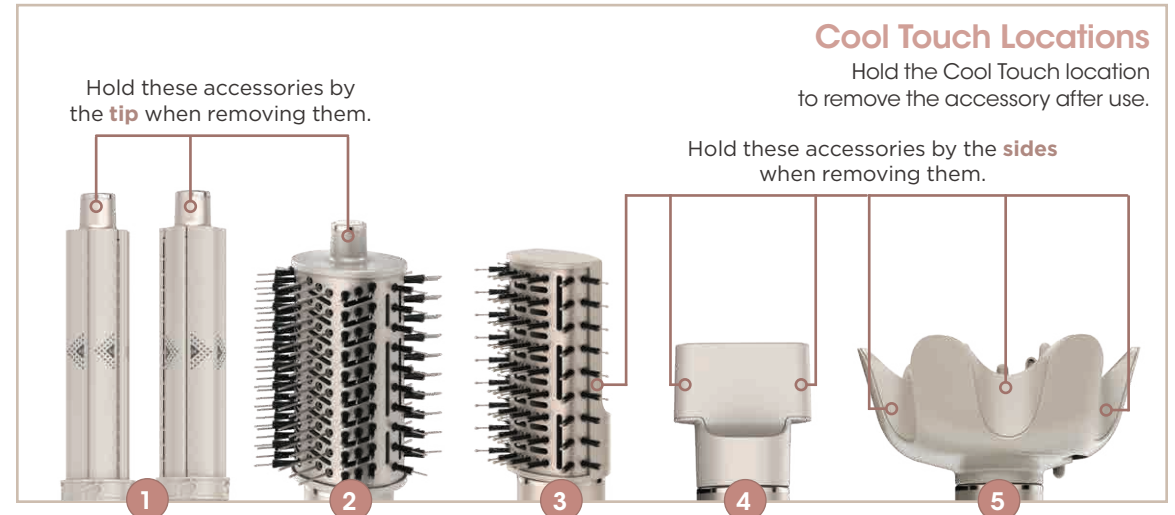
Retracted prongs—for shorter, finer hair or if the ends need a little extra air

SOLD SEPARATELY

Cool Touch Locations





Hold the Cool Touch location to remove the accessory after use.

Hold these accessories by the **sides** when removing them.

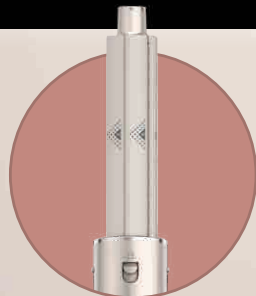


*Sold separately

Change the way you curl.

Recommended Setting:  air  |  temp 

Auto-Wrap Curlers

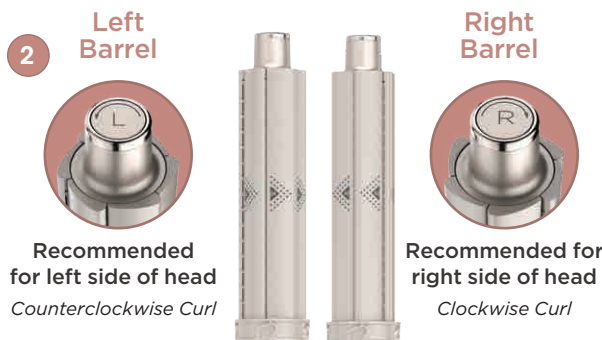


Scan the QR code and watch the how-to video to learn how to use your Auto-Wrap Curlers!



Begin with **slightly damp hair**. Separate the **top and bottom sections** of your hair.

Pro Tip: Apply hair products or styling agents as desired.

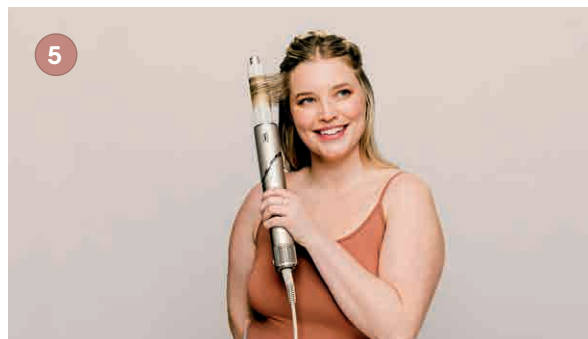


Select the direction of the curls by choosing the corresponding barrel.



Hold the **middle of a ½-inch-to-1-inch section** of hair. **Let the ends dangle.**

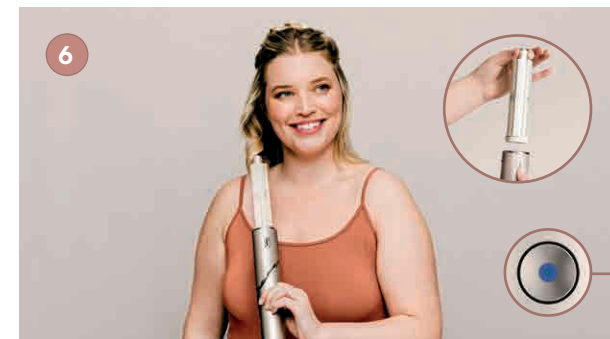
Pro tip: Grab a section of hair that is a consistent length.



Once the ends wrap, let go of the hair section and slowly **bring the barrel directly to the roots**, allowing the hair to continue to wrap itself around the barrel. **No need to twist the wand.**



Turn on the styling wand. **Bring the barrel behind the dangling ends.** The ends will automatically wrap around the barrel - **no need to manually wrap.**



For best results and to avoid heat damage, **hold the barrel in place for 10 seconds**, then press and hold the **Cool Shot button for at least 10 seconds**. Repeat as needed until hair is dry. **Turn off the styling wand** and pull the barrel straight down to reveal your curl!

Pro Tip: Use a setting or holding spray as desired for an even longer-lasting look.

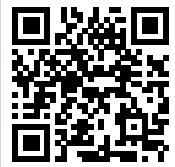
Additional Styling Tips:

- Take smaller sections and make sure your hair isn't too wet if it is having difficulty wrapping around the barrel.
- Use sectioning clips to prevent unwanted hair from being wrapped around the barrel.
- Test different moisture levels to understand the level of moisture that works best for your hair type.
- For curly or coily hair, prep your hair for curling by lengthening it using the paddle brush or oval brush.

Turn up the volume.

Recommended Setting:  air | temp

Oval Brush



For additional help and tips based on your hair type, scan the QR code to watch the how-to video and to visit our FAQ page!



Begin with rough-dried or towel-dried hair.

Pro Tip: Apply hair products or styling agents as desired.



Section your hair as desired. For voluminous blowouts, start by placing the round brush under the hair close to the roots.

Pro Tip: For even more volume, hold the brush under your hair close to the roots for 3 seconds before brushing outwards.



Roll the brush outwards from the roots to the ends to engage the bristles and gently grip the hair.

Pro Tip: For extra volume, brush your hair in an upward direction.





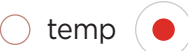
Repeat on remaining sections until hair has been dried into a bouncy, voluminous style.

Pro Tip: Set your style and help reduce frizz by pressing the **Cool Shot button**.

Additional Styling Tips:

- If you have fine hair, try reducing the airflow to help cut down on frizz.
- If you have thick hair, try increasing the heat for even faster results.
- If you have curly or coily hair, try increasing the heat to help achieve a straighter style.
- For an added curl, place the brush under the ends of the hair and roll the brush towards the roots to engage the bristles. Twist the hair off the brush to release the curl.

Perfect sleek, straight styles.

Recommended Setting:  air  |  temp 

Paddle Brush



Begin with **rough-dried or towel-dried hair**. Section your hair as desired.

Pro Tip: Apply hair products or styling agents as desired.



For a smooth, sleek style, start by **placing the brush close to the roots** to engage the detangling bristles.



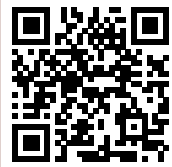
Brush down your hair, making sure to engage the smoothing bristles, and gently grip the hair.

Pro Tip: Hold the ends of your hair while brushing for added tension and smoothing.



Repeat on remaining sections until hair has been dried into a smooth, straight style.

Pro Tip: Set your style and help reduce frizz by pressing the **Cool Shot button**.



For additional help and tips based on your hair type, scan the QR code to watch the how-to video and to visit our FAQ page!

Additional Styling Tips:

- If you have fine hair, try reducing the airflow to help cut down on frizz.
- If you have thick hair, try brushing smaller sections for smoother results.
- If you have curly or coily hair, try repeatedly brushing smaller sections and increasing the heat to help achieve a straighter style.
- For added volume, place the brush under the hair section close to the roots and brush upwards using a rounding motion.

Master smooth, stylish blowouts.

Recommended Setting:  air  |  temp 

Styling Concentrator



For additional help and tips based on your hair type, scan the QR code to watch the how-to video and to visit our FAQ page!



Begin with **rough-dried or towel-dried hair**.

Pro Tip: Apply hair products or styling agents as desired.



Section your hair as desired and start styling with a round brush. **Rotate the concentrator** so airflow is always in line with the round brush.



Apply heat in a downward motion for smoothing.

Pro Tip: Apply heat at ends for shaping and bending.







Finish styling by setting shape at ends and pressing the **Cool Shot button**.

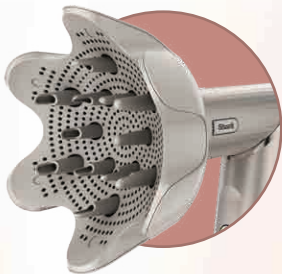
Additional Styling Tips:

- If you have fine hair, try reducing the airflow to help cut down on frizz.
- To create a curl, wrap your hair around a round brush and dry it in place using the concentrator
- For added volume, place a round brush under the roots and brush upwards while drying with the concentrator.
- For an added curl at the ends, roll the ends of the hair onto a round brush and dry in place using the concentrator.

Define your natural curls.

Recommended Setting:  air  |  temp 

Curl-Defining Diffuser



For additional help and tips based on your hair type, scan the QR code to watch the how-to video and to visit our FAQ page!



Begin with towel-dried hair. Working around your head, bunch curls from ends between the petals of the diffuser.

Pro Tip: Apply curly hair products or styling agents as desired to wet hair.



Bring the diffuser up to the roots. Pause and hold.



For more volume, slide the lever to **extend prongs to lift roots higher.**

Pro Tip: Gather hair in diffuser with prongs retracted, then extend them when you reach the roots to increase grab and maximize flow.



If desired, **flip upside down and bunch from below** for extra volume.

Pro Tip: Keep the integrity of your natural curls by switching between Low temp and the **Cool Shot** button.

Additional Styling Tips:

- Apply curly hair products to wet hair before drying to help define your curls and cut down on frizz.
- If you have thick hair, try increasing the heat for even faster results.

Looking for more inspiration, tips, and tricks?
Scan the QR code below or
visit qr.sharkclean.com/flexstyle



HD400_Series_StyleGuide_MP_Mv6

© 2022 Shark Ninja Operating LLC.

CHANGE THE WAY YOU CURL and SHARK FLEXSTYLE are trademarks of SharkNinja Operating LLC.