



Nisplay.

LET'S PLAY.

Nisplay
Tennis Ball Launcher
User Manual

INSIDE THE BOX



Ball Launcher X 1



Oscillator (Optional) X1



Lithium Battery X1



Battery Pack X 1



Remote Controller X1



Wheel Assembly X1



Charger X1



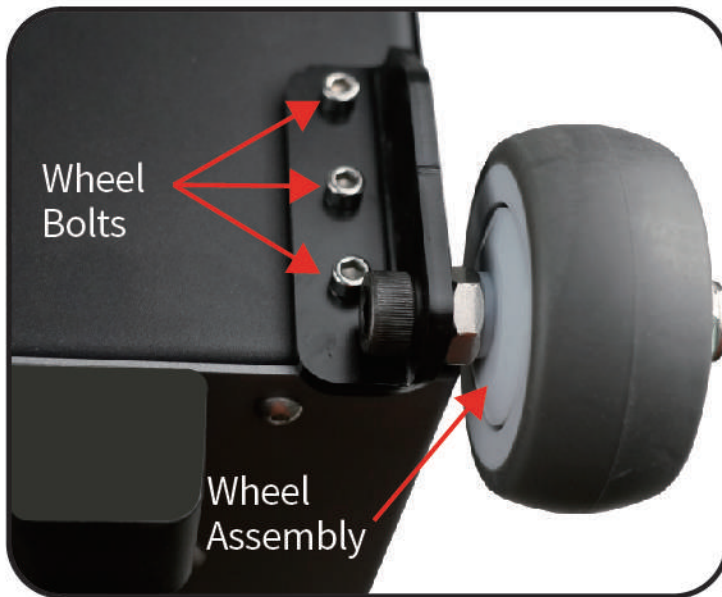
DC Power Cord X1



Y Splitter Power Cable (Optional) X1

The actual product/accessories may vary from the images shown.

WHEEL ASSEMBLY INSTALLATION INSTRUCTION



- Flip the ball machine over and place it on a table or workbench.
- Position the wheel assembly on the bottom of the machine, where there are three holes. Make sure the wheel is facing the correct direction and is next to the angle of the machine.
- Use the wheel bolts provided to securely fasten the wheel assembly to the machine. Make sure the bolts are tightened firmly.
- Repeat steps 2 and 3 to install the second wheel assembly.

OPERATION INSTRUCTION

(Please don't pull it, it is only for indication)

LAUNCH START/PAUSE ④

SAFETY WIRE (NO ACTION NEEDED) ③

POWER ②

DC POWER INPUT ①

FEED RATE (SECOND/BALL) ⑤

TOP MOTOR SPEED ⑥

BOTTOM MOTOR SPEED ⑦

LAUNCH ANGLE INDICATOR ⑨

LAUNCH ANGLE ADJUSTMENT KNOB ⑧

Nisplay

Nisplay N1 Control Panel

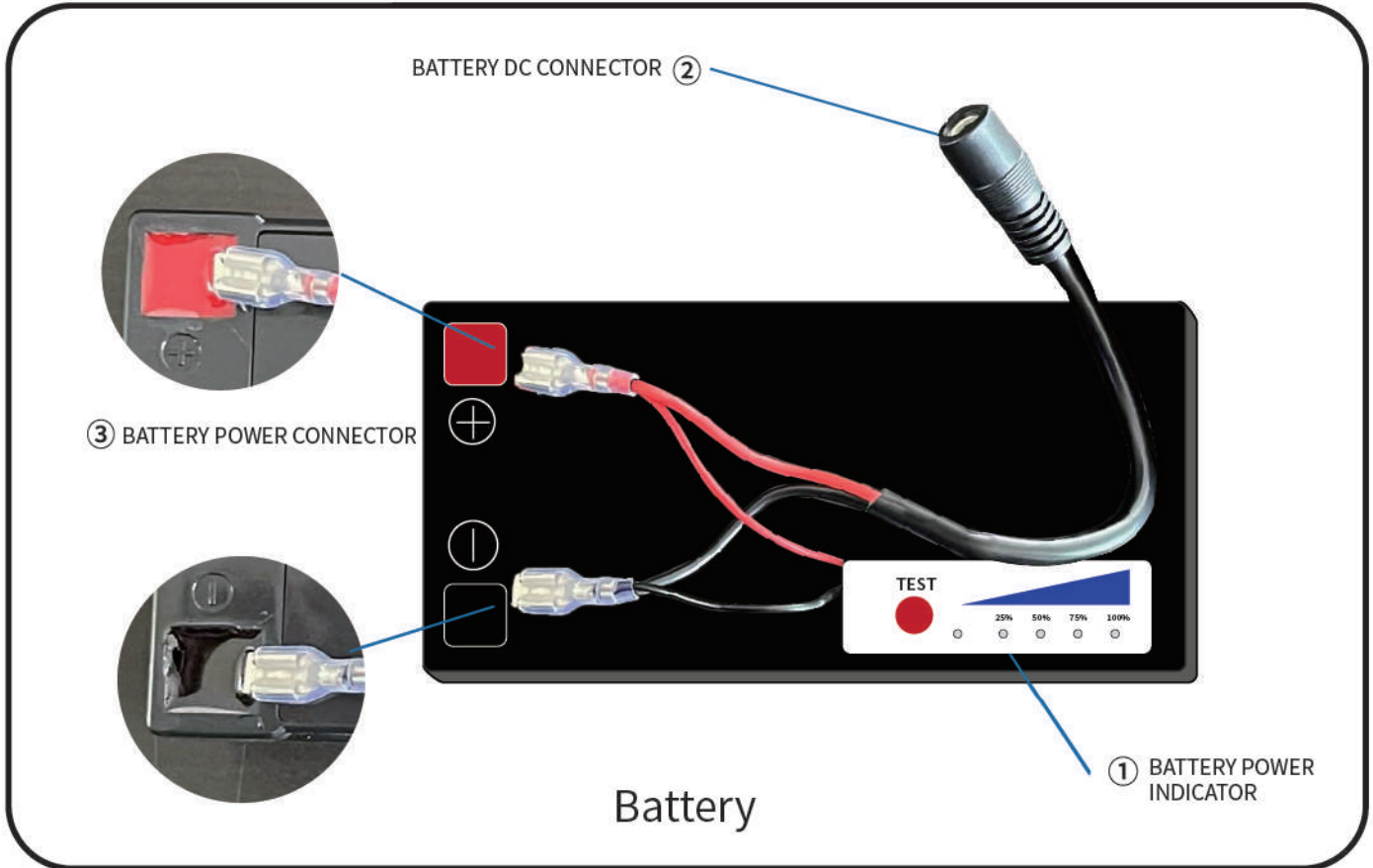
Quick Start Guide:

Please follow these quick start operating guidelines:

- Connect DC Power Cord with your battery with the DC Power Input ① on the Control Panel (Please be aware this is a DC power input only, do NOT use AC power).
- Switch Power ② on the control panel to ON.
- Adjust Feed ⑤ to an appropriate number. (1 means launch one ball every second, 9 means launch one ball every 9 seconds).
- Adjust the Top Motor Speed to an appropriate speed ⑥ . (Higher number means higher speed).
- When Top Motor Speed is larger than Bottom Motor Speed, it will launch a topspin ball
- When Bottom Motor Speed is larger than Top Motor Speed ⑦ ,it will launch a backspin ball
- Rotate Launch Angle ⑧ clockwise will lower the height of ball. Rotate is counterclockwise will increase the height of ball.
- Rotate Launch Angel ⑧ will change Launch Angel Indicator ⑨. Please adjust it to the correct angle for your need.
- After adjusting the settings. Press Start/Pause ④ to Start.
- You can also use the remote controller to start or pause.
- Ball Launcher will start to launch the ball 5 seconds after you hear a "beep".
- Ball Launcher will pause 2 seconds after you hear two "beeps" when you press Start/Pause ④ button to pause.
- Please press Start/Pause to pause and switch Power to OFF when you finish all the balls.
- Fuse ③ is a self-protection system, and no action is needed.
- Now you can start and enjoy the game.

BATTERY CONNECTION INSTRUCTION (OPTIONAL)

Battery May Not be Included



- Battery Power Indicator ①
 - Press the Test Button to show battery power from 0 – 100%.
- Battery DC Connector ②
 - Use Batter Charger to connect will charge your battery.
 - Connect your Ball Launch with DC Power Cord to battery will power your ball launcher.

Battery Power Connector ③

Please connect the Red wire to the red pin (+), and connect the Black wire to the black pin (-).
Wrong connection will damage your battery and ball launcher and may cause fire.

- To ensure best battery lifetime
 - Please place your battery evenly.
 - Charge your battery fully for the first time.
 - Re-charge your battery after use.

- Please do Not connect battery with ball launch when not in use.
- Re-use battery every 30 days.
- Please do not store the battery in a closed environment that exceeds 40 degrees Celsius (104 degrees F).
- Charge your battery
 - You must fully charge your battery for the first use.
 - The indicator will be red when charging, Green when fully charged.
 - Battery life will be damaged if not used for long time.

BATTERY PACK INSTRUCTION

- Use the sticky strip to cover the Battery Power Connector side and secure your battery when you place the battery inside.
- Insert the Battery DC Connector from the hole in the case to the outside of the Battery Pack.
- Hang the Battery Pack on the ball launcher will help to transport the ball launcher.



TRAINING MODE

The Nisplay N1 launcher depends mainly on the feed frequency, top and bottom motor speed, and the launch angel.

The illustrations below can be used as a reference for locating the ball launcher on the court for ground strokes drills/practice.

NOTE: Poor quality or condition of the tennis balls used or the outdoor weather conditions will also affect the need to adjust the ball launcher.

HORIZONTAL OSCILLATOR INSTALLATION INSTRUCTION

- Place the oscillator on the ground.
- Put the ball machine on top of the oscillator, making sure that the control panel side is on the same side as the oscillator handler.
- Connect the Y-splitter power cable to the battery.
- Connect one side of the Y-splitter power cable to the oscillator power input.
- Connect the other side of the Y-splitter power cable to the ball machine power input.
- Turn on the power switch for the oscillator, which will start it oscillating horizontally.
- Turn on the power switch for the ball machine and set it to "Start".
The ball machine will begin running.



BEGINNER'S MODE

Low ball toss Mode

Settings

A - 4
B - 1
C - 1
D - 45



Baseline low ball Mode

Settings

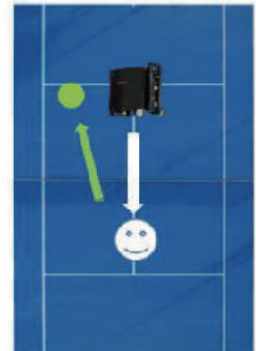
A - 4
B - 6
C - 6
D - 20



Volley Mode

Settings

A - 4
B - 5
C - 5
D - 15

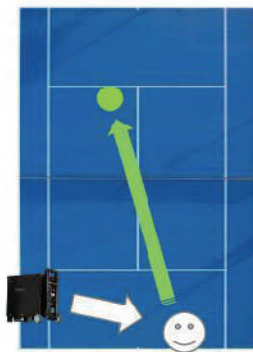


OTHER MODE

Ball boy mode

Settings

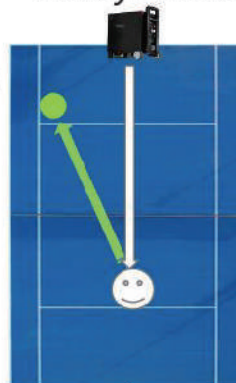
A - 10
B - 1.5
C - 1.5
D - 55



Volley Mode

Settings

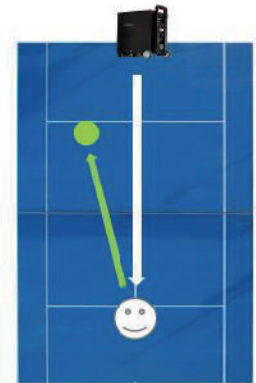
A - 2
B - 7
C - 7
D - 20



Overhead Smash Mode

Settings

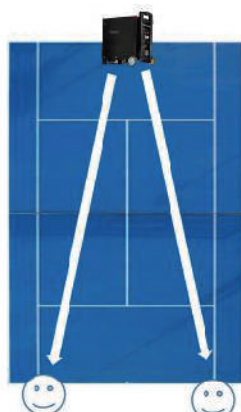
A - 3
B - 5
C - 5
D - 55



Baseline Mode

Settings

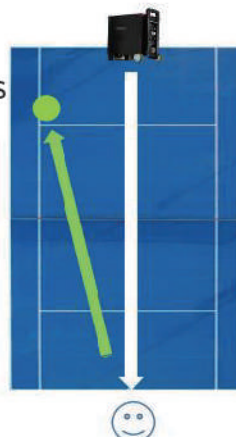
A - 4
B - 8
C - 8
D - 25



moon ball Mode

Settings

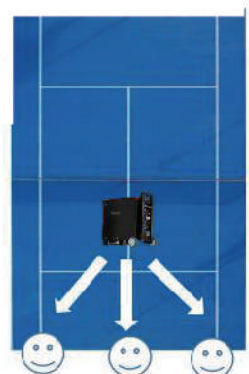
A - 4
B - 6
C - 6
D - 50



Intense low balance Mode

Settings

A - 1
B - 1
C - 1
D - 35



Note: Backhand Forehand

A is Feed Rate, which is FEED on the Control Panel (5 on the Control Panel)

B is Top Motor Speed, which is Bottom Motor Speed on the Control Panel (6 on the Control Panel)

C is Bottom Motor Speed, which is Top Motor Speed on the Control Panel (7 on the Control Panel)

D is Launch Angle, which can find the Launch Angle on the Control Panel (9 on the Control Panel)

TROUBLESHOOTING

ERROR	CAUSE	ACTION REQUIRED
Tennis not fired, long beeping siren	The ball is stuck between the two serving wheels	Turn off the power, stand on the side of the ball launcher, tilt the ball launcher back, and turn the wheel by hand to take out the ball.
Remote control doesn't work	Low Power	Change remote controller battery
	External signal interference	High voltage power or signal tower might interfere with remote controller signal. The ball launcher will go to sleep mode after 120S without any action. Please any button to re-start.
The ball launcher is on and the turntable does not turn	Remote controller paused the ball launcher	Press the remote controller to start, or re-start the ball launcher.
Ball launcher not operating	Low Power	Charge your battery
	Battery not connected	Re-connect your battery
	Self-protection is on	Re-start your ball launcher
Battery not charging	Battery does not connect correctly	Ensure the battery is connect correctly, red wire with red pin, black wire with black pin
	Battery does not connect with the DC Power Cord	Re-connect them
	Others	Contact customer service for support

Please make sure the ball launcher is always set to OFF when you troubleshoot.

SAFETY GUIDELINES

- Please don't stand in front of the ball launcher when it is ON.
- Please don't touch and block the ball launcher with your body when it is ON.
- Please don't place any non-tennis ball in the ball launcher basket when it is ON.
- Please make sure the ball launch is set to OFF when you troubleshoot or removing balls.
- Please don't use the ball launcher in rain or wet environment.
- Please don't move the ball launcher until it is fully off.

WARNING

Please follow these safety guidelines to reduce the risk of electric shock, fire, and personal injury:

- Please read the user manual before using the ball launcher.
- Please don't place any parts into water or other liquid.
- Adults must fully accompany children in use.
- Please don't stay in front of the ball launcher when it is ON. It may cause serious injury.
- Please don't move the ball launcher or troubleshoot when it is ON.
- Please wear safety goggles when you maintain or troubleshoot the ball launcher.
- Please don't place any non-tennis ball in the ball launcher basket when it is ON.
- Please turn the ball launcher OFF when not in use.



MAINTENANCE

Please clean the ball launcher periodically to remove dust and dirt.

- Use a vacuum or air blower to clean the dust and dirt.
- Use a paper or towel to wipe the external of the ball launcher.
- Please don't use anything sharp to clean the ball launcher.
- Please don't use water for cleaning.

STORAGE

To ensure the lifetime and quality of the ball launcher, please follow.

- Always store the ball launcher in a clean, dry location..
- Never store the ball launcher in a closed vehicle.
- Never store the ball launcher outside that will expose to rain and sun.

OTHER

- Product and accessories picture is just used for reference, and the actual product or accessories might be different.
- We will test and check every single machine before we ship it out, so there is a possibility there might be dust or tennis hair left on the machine.

NISPLAY Official Email
NISPLAY:TENNIS@GMAIL.COM

Australian Professional Tennis Recommendation -
Training Machine for Quickly Improving Tennis Skills