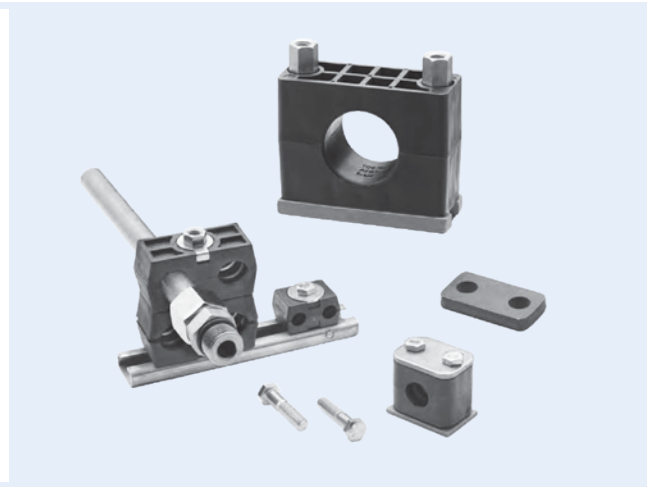


# TUBE SUPPORT KITS

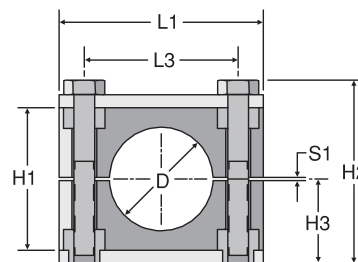
Standard Series



**Kit Includes:** (2) Clamp Halves, (2) Hex Head Bolts and (1) Cover Plate

## TUBE CLAMP KITS

KIT PART #		GROUP	TUBE SIZE in	D		H1 in	H2 in	H3 in	L1 in	L3 in	S1 in
316SS	STEEL			in	mm						
3201804	3077755	1A	1/4	0.25	6.4	1.06	1.45	0.65	1.45	0.78	0.01
3163429	3077734	1A	3/8	0.38	9.5	1.06	1.45	0.65	1.45	0.78	0.01
3186194	3077737	2	1/2	0.50	12.7	1.29	1.69	0.77	1.65	1.02	0.01
3218916	3077738	2	5/8	0.63	16.0	1.29	1.69	0.77	1.65	1.02	0.01
3216494	3077739	3	3/4	0.75	19.0	1.41	1.77	0.80	1.96	1.29	0.01
3218545	3077741	3	1	1.00	25.4	1.41	1.77	0.80	1.96	1.29	0.01
3218917	Contact Us	5	1-1/4	1.25	32.0	2.28	2.72	1.28	2.79	2.04	0.03
3218918	3077746	5	1-1/2	1.50	38.1	2.28	2.72	1.28	2.79	2.04	0.03
3218922	Contact Us	6	2	2.00	50.8	2.59	3	1.42	3.38	2.59	0.03



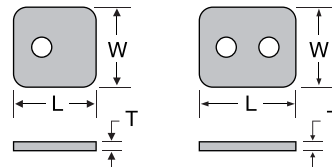
**Materials:** Clamp Halves: Black Polypropylene

## PIPE CLAMP KITS

KIT PART #		GROUP	PIPE SIZE in	D		H1 in	H2 in	H3 in	L1 in	L3 in	S1 in
316SS	STEEL			in	mm						
3218748	3077727	3	1/2	0.84	21.30	1.41	1.77	0.80	1.96	1.29	0.01
3218693	Contact Us	4	3/4	1.05	26.60	1.65	2.09	0.96	2.32	1.57	0.01
3218924	3077744	5	1	1.31	33.40	2.28	2.72	1.28	2.79	2.04	0.03
Contact Us	3077731	6	1-1/2	1.90	48.30	2.59	3.00	1.42	3.38	2.59	0.03

## COVER PLATE

GROUP	L in	W in	T in
1A	1.33	1.18	0.11
2	1.59	1.18	0.11
3	1.88	1.18	0.11
4	2.24	1.18	0.11
5	2.75	1.18	0.11
6	3.38	1.18	0.11



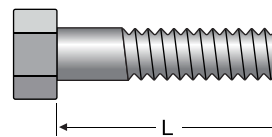
### Materials:

Steel: Zinc Nickel Plated

Stainless Steel: 316SS

## HEX HEAD BOLT

GROUP	L in
1A	1.25
2	1.38
3	1.5
4	1.88
5	2.38
6	2.75



### Materials:

Steel: Zinc Clear

Chomate Plated

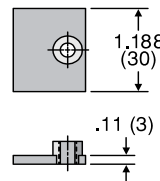
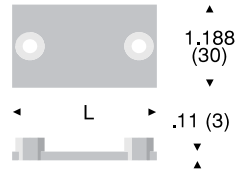
Stainless Steel: 18-8 SS

# MOUNTING OPTIONS



## WELD PLATE

PART #		GROUP	L	
SS	STEEL		in	mm
3219087	3077713	1A	1.41	36
3219089	3077700	2	1.65	42
3219090	3077707	3	1.96	50
3219092	3219091	4	2.36	60
3219093	3077718	5	2.79	71
3219094	3077712	6	3.46	88

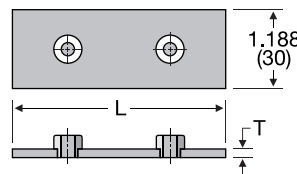


**Materials:**

Steel: 1020 Steel, Zinc-Phosphate Plated  
Stainless Steel: 316 SS

## WELD PLATE - ELONGATED

PART #	STEEL	GROUP	L	
			in	mm
3219095		1A	2.51	64
3219096		2	2.75	70
3077758		3	3.07	78
3219097		4	3.42	87
3077759		5	3.93	100
3219098		6	4.52	115

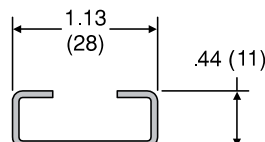


**Materials:**

Steel: 1020 Steel, Zinc-Phosphate Plated  
Stainless Steel: 316 SS  
Available Upon Request

## MOUNTING RAIL

PART #	L	
	ft	m
3042967	3.28	1

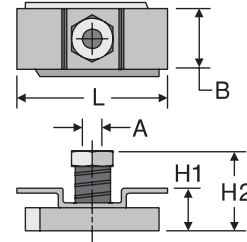


**Materials:**

Steel: Steel Unplated  
Stainless Steel: 316 SS  
Available Upon Request

## CHANNEL RAIL ADAPTER (2) REQUIRED

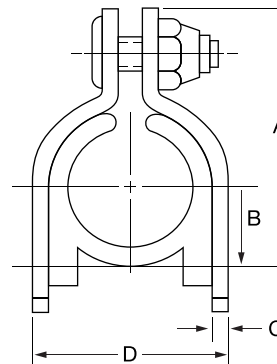
PART #	THREAD "A" UNC	L in (mm)	B in (mm)	H1 in (mm)	H2 in (mm)
3077760	1/4-20	1.37 (35)	0.74 (19)	0.51 (13)	0.77 (19.5)



**Materials:**  
Steel: Zinc Nickel Plated

## STRUT MOUNTED CUSHION CLAMP ASSEMBLY

PART #	TUBE O.D. in	A in	B in	C in	D in
3199686	1/4	1.11	0.22	0.75	0.62
3199687	3/8	1.24	0.28	0.75	0.75
3199688	1/2	1.36	0.34	0.75	0.87
3199689	3/4	1.78	0.53	0.75	1.33
3199690	1	2.03	0.66	0.75	1.79



**Materials:**  
304SS  
High Strength Thermoplastic Elastomer (TPE)  
**Temperature Rating:**  
-65F to +275F  
**Torque Specifications:**  
Available Upon Request

## TUBE STRAPS

PART #	TUBE O.D. in	BAND WIDTH in
3043253	1/4	1/2
3043254	3/8	1/2
3043255	1/2	1/2



**Materials:**  
Steel: Zinc Plated  
Stainless Steel: Available Upon Request

## PLASTIC TUBE SUPPORT STRIPS

PART #	TUBE O.D. in	NO. OF TUBES	HOLE SIZE in
3063182	1/4	10	0.187
3063185	3/8	10	0.187
3063186	1/2	6	0.187

