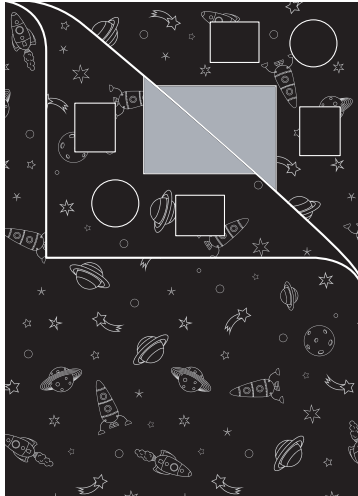




Portable Blackout Curtain



Instruction Manual

Model: AY-C01B-GL / AY-C02B-GL

Important instructions - retain for future use

Thank you for choosing to purchase a product from Aycorn.

We hope you and your little one enjoy your new Portable Blackout Blind and if you have any comments or queries, please contact our friendly customer care team at support@aycorn.com.

Safety Instructions:

⚠️ WARNING

- This appliance is intended for indoor household use and similar applications. Do not use outdoors.
- This product is not a toy. Keep it away from small children.
- The suction cups may pose a choking hazard.
- Do not leave the curtains on the windows for extended periods of time. Remove it after each use to avoid over exposure to sunlight, to prevent damage to the curtain and your window.
- The suction cups may leave light marks on a window. These can be easily cleaned away using any window detergent.

⚠️ CAUTION

- Do not use any abrasive cleaners or solvents, as this can damage the curtain.

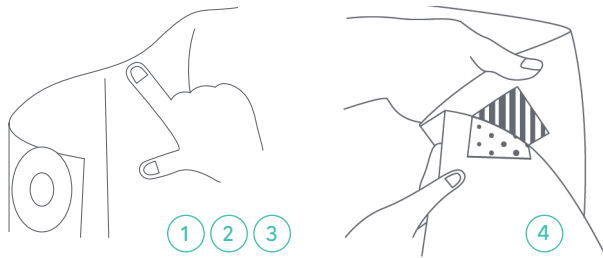
Suction Cup Set Up:

The curtain is intended for use on clean, dry windows that measure up to 130 x 200cm.

1. Wet the suction cups with your fingertips and clean water



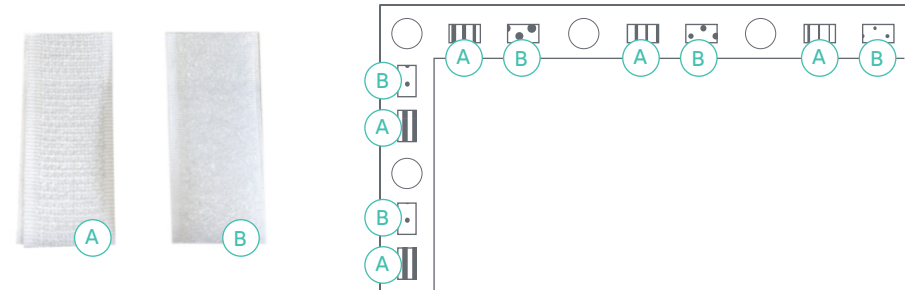
2. Attach the top of the curtain by placing the suction cups in your chosen location and apply pressure.
3. Start from the top of the curtain and work your way around to the sides and bottom.
4. To adjust the length of the curtain, pinch the material together so the velcro pieces attach to each other and the suction cups are closer to each other.



Double-Sided Tape Set Up:

Your purchase includes additional velcro tape to secure the curtain to the window frame between the suction cups. This blocks out light completely for the darkest of rooms!

Ensure the velcro tape piece used is the opposite to the velcro on the curtain.



1. Remove the protective layer on the tape and carefully stick it to the window frame so that it lines up with the velcro on the curtain.
2. Attach the curtain to the surface using the suction cups, making sure that the velcro patches line up with those on the wall.
3. Carefully smooth the velcro on the curtain to the velcro on the wall.

NOTE: This tape can damage window frames and surfaces, ensure you remove the curtain carefully.

Suction Cup Removal:

1. Pull the tap on each suction cup to let in air and release the suction.
2. DO NOT pull on the curtain itself as this may cause damage to the blind or surface.



Portable Blackout Curtain
Model: AY-C01B-GL / AY-C02B-GL

One Retail Group

24a Ryland Road, London
NW5 3EH, United Kingdom

EU Authorised Representative:

Brandrep Limited, The Black Church
St Mary's Pl N, Dublin, D07 P4AX, Ireland

www.aycorn.com
© Copyright 2021

