

INNOVATION
MADE BY GEUDER®

DMEK RAPID

**REVOLUTIONARY
ADVANCED
PRELOADABLE
INJECTION
DEVICE**



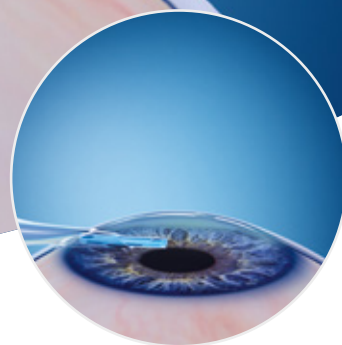
PREPARATION



LOADING



TRANSPORTATION



INJECTION

Geuder®
Precision made in Germany

NO-TOUCH WORKFLOW
FROM PREPARATION
TO IMPLANTATION

NO-TOUCH DMEK SYSTEM FOR PRELOADING AND INJECTION



CELL CULTURE FLASK
(optional)

G-38626

SZURMAN

SINGLE-USE DMEK TRANSPORTATION CARTRIDGE

Cartridge for transportation of prepared Descemet membrane for use in Descemet membrane endothelial keratoplasty (DMEK)

incl. cartridge, 2 plugs, transportation holder for cartridge and connection for loading the cartridge

6 sets per box, sterile



Professor Peter Szurman, MD
Sulzbach Eye Clinic, Germany

BENEFITS OF DMEK RAPID

FOR EYE BANKS

- Respond to increasing demand for precut tissues
- Improved workflow
- New level of standardization
- No-touch from preparation to implantation
- Support surgeons with high-quality ready-to-use graft

FOR CORNEA SURGEONS

- No need for preparation of Descemet lamella in OR
- Reliable planning of surgeries and easy patient management
- Maximized endothelial cell count due to no-touch handling process
- Less time required for overall procedure
- Easy implementation of standardized workflow

GEUDER AG reserves the right to make changes to technical details in response to recent developments. GEUDER does not assume liability for the accuracy of each individual statement.

Illustrations not drawn to scale.

Geuder[®]
Precision made in Germany

GEUDER AG
Hertzstrasse 4
69126 Heidelberg
Germany

Phone: +49 6221 3066
Fax: +49 6221 303122
info@geuder.de
www.geuder.com