



AL FAISAILIAH SCHOOL

UNIFORM GUIDE

 THE STITCH CART
TRADING COMPANY

www.stichcart.com

INTRODUCTON

Dear Parent,

We would like to take this opportunity to welcome you to www.stichcart.com this guide has been put together to assist you on the following :

- Selecting the correct uniform for your child
- Maintaining the uniform
- Size guide and How to measure

If you have any comments or suggestions relating to this guide kindly email these to customercare@stichcart.com

Wishing your child all the success for this academic year and would like to thank you for your continued custom and support.

Thanking You,

Team Stitch Cart.



AL FAISAILIAH SCHOOL

CORE UNIFORM **KG1 - KG3**

GIRLS

BASEBALL CAP

LONG SLEEVE POLO (OPTIONAL)

POLO SHIRT

SKIRT INSIDE ADJUSTABLE WAISTBAND

CORE UNIFORM **G1 - G10**

GIRLS

POLO SHIRT

SKIRT INSIDE ADJUSTABLE WAISTBAND

BASEBALL CAP

LONG SLEEVE POLO (OPTIONAL)

TROUSER INSIDE ADJUSTABLE WAISTBAND (OPTIONAL)

CORE UNIFORM **G11 - G12**

GIRLS

TROUSER INSIDE ADJUSTABLE WAISTBAND (OPTIONAL)

CLIP TIE

WHITE BLOUSE

SKIRT INSIDE ADJUSTABLE WAISTBAND

WINTER UNIFORM **ALL GRADES**

NAVY WINTER JACKET

PE UNIFORMS **ALL GRADES**

NAVY FULL ZIP HOODIE

NAVY TRACK PANTS

BLUE

RED

YELLOW

GREEN

*NB - Please check your house colour before ordering your PE Jersey

UNIFORM CARE GUIDE

THE FOLLOWING GUIDELINES WILL HELP YOU GAIN LONGEVITY FROM YOUR GARMENT.

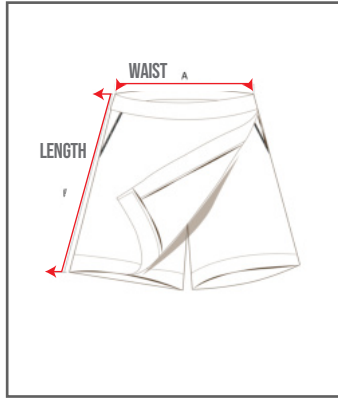
WASH CARE SYMBOLS



	WASHING	DRYING	IRONING
SKIRTS/TROUSERS/PINAFORE SHORTS	Wash at 30°C. Higher temperatures will cause shrinkage, affect the colour or weaken the fibres, wash dark colours separately. Avoid strong fabric conditioners as they can break the fibres. Do not bleach.	Do not tumble dry pleated garments as the pleats will disappear. For best results simply drip dry after washing.	If you want to improve the creases, use a steam iron or a clean damp cloth, with a regular iron. Do not use a hot iron directly on the garment.
SPORTS HOODIE/TRACK PANTS/PE JERSEY	Always wash at 30°C. Higher temperatures will cause shrinkage, affect the colour or weaken the fibres. Wash dark colours separately, Avoid strong fabric conditioners. Do not bleach.	PE Jersey do dry very quickly if left to dry naturally, but if you want to tumble dry them ensure they are on a cool setting.	Do not iron directly on to the garment and do not use excessive heat as this makes the fabric brittle. Do not iron on the print or Embroidery directly please iron on reverse.
SHIRTS - BLOUSES	Can be machine washed on a gentle polyester easy care/delicate programme up to 30° C. Avoid strong fabric conditioners. Do not bleach.	These garments can be tumble dried on a low setting. If the temperature is higher the fibres can be damaged and shrinkage may occur.	Use the synthetic setting and iron directly on to the garment. Ironing is easier if the garment is slightly damp. Do not iron on the print or Embroidery directly please iron on reverse.

* KINDLY NOTE THAT ANY PRINTS & LOGOS / EMBELLISHMENTS MUST NOT BE IRONED ON DIRECTLY BUT INSTEAD ON THE REVERSE.

SIZE GUIDE - KG GRADES (CORE UNIFORM - GIRLS)

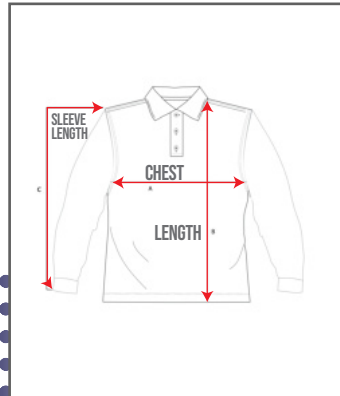
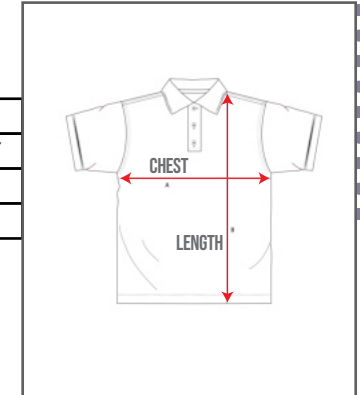


KG GRADES GIRLS SKORT

	SIZE	2	4	6	8
	TO FIT WAIST	18"-22"	20"-24"	22"-26"	24"-28"
A	OUTSIDE LEG LENGTH	11	12	13	14
B	WAIST RELAXED	11.5	12.5	13.5	14.5

KG GRADES UNISEX WHITE POLO SHIRT

	SIZE	2	4	6	8
	AGE IN YEARS	3Y	4Y	5-6Y	7-8Y
A	HALF CHEST	12	13	14	15
B	TOTAL LENGTH (SNP)	18	19	20	21



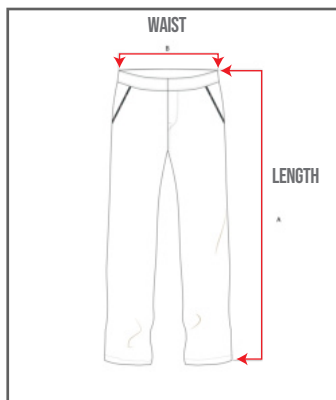
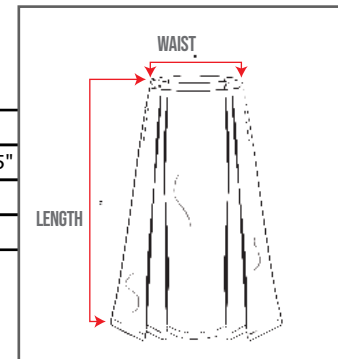
KG GRADES UNISEX WHITE POLO SHIRT L/S

	SIZE	2	4	6	8
	AGE IN YEARS	3Y	4Y	5-6Y	7-8Y
A	HALF CHEST	12	13	14	15
B	TOTAL LENGTH (SNP)	18	19	20	21
C	SLEEVE LENGTH	15	16	17	18

*DISCLAIMER:- +/-5% variation from the actual garment in line with the international tolerance level

SIZE GUIDE - G 1 - G 10 (CORE UNIFORM - GIRLS)

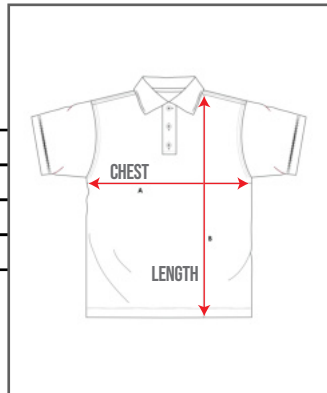
GRADES 1-12 GIRLS SKIRT		SIZE	6	8	10	12	14	16	18	20	22	24
		TO FIT WAIST	20"-23"	21"-25"	23"-27"	25"-29"	28"-32"	31"-35"	34"-38"	36"-40"	38"-42"	41"-45"
A		HALD WAIST RELAXED	11.5	12.5	13.5	14.5	16	17.5	19	20	21	22.5
B		SIDE SEAM LENGTH	29.5	31	33	35	37	39	41	42	42	43



GRADES 1-12 UNISEX TROUSER		SIZE	8	10	12	14	16	18	20	22	24	26
		TO FIT WAIST	20"-24"	22"-26"	24"-28"	26"-30"	28"-32"	30"-34"	32"-36"	34"-38"	36"-40"	40"-44"
A		OUTSIDE LEG LENGTH	12	13	14	15	16	17	18	19	20	22
B		HALF WAIST RELAXED	29	31	33	35	37	39	40	41	42	42

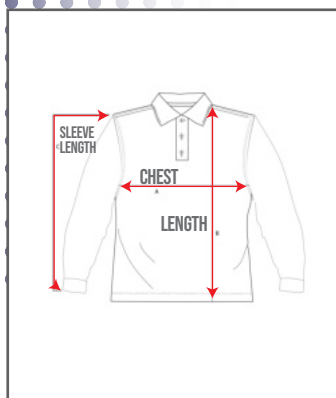
GRADES 1-10 UNISEX NAVY POLO SHIRT S/S

SIZE		2	4	6	8	10	12	14	16	18	20	22	24	26
	AGE IN YEARS	3Y	4Y	5-6Y	7-8Y	9-10Y	11-12Y	13-14Y	15-16	M	L	XL	2XL	3XL
A	HALF CHEST	12	13	14	15	16	17	18	19	20	21	22	23	24
B	TOTAL LENGTH (SNP)	18	19	20	21	22	23	25	26	27	28	29	29	30



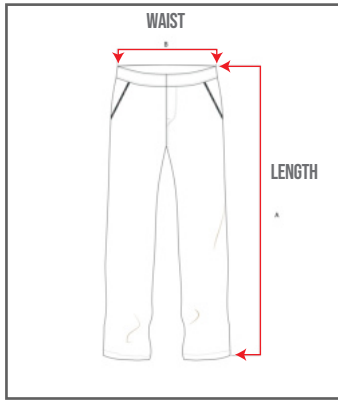
GRADES 1-10 UNISEX NAVY POLO SHIRT L/S

SIZE		2	4	6	8	10	12	14	16	18	20	22	24	26
	AGE IN YEARS	3Y	4Y	5-6Y	7-8Y	9-10Y	11-12Y	13-14Y	15-16	M	L	XL	2XL	3XL
A	HALF CHEST	12	13	14	15	16	17	18	19	20	21	22	23	24
B	TOTAL LENGTH (SNP)	18	19	20	21	22	23	25	26	27	28	29	29	30
C	SLEEVE LENGTH	15	16	17	18	19	20	21.5	23	24	25	26	27	28



*DISCLAIMER:- +/-5% variation from the actual garment in line with the international tolerance level

SIZE GUIDE - G 11 - G 12 (CORE UNIFORM - GIRLS)

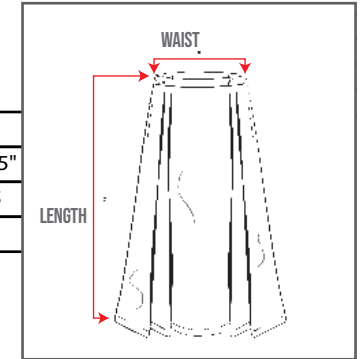


GRADES 1-12 UNISEX TROUSER

SIZE	8	10	12	14	16	18	20	22	24	26
TO FIT WAIST	20"-24"	22"-26"	24"-28"	26"-30"	28"-32"	30"-34"	32"-36"	34"-38"	36"-40"	40"-44"
OUTSIDE LEG LENGTH	12	13	14	15	16	17	18	19	20	22
HALF WAIST RELAXED	29	31	33	35	37	39	40	41	42	42

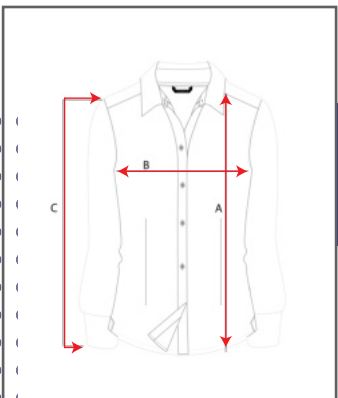
GRADES 1-12 GIRLS SKIRT

SIZE	6	8	10	12	14	16	18	20	22	24
TO FIT WAIST	20"-23"	21"-25"	23"-27"	25"-29"	28"-32"	31"-35"	34"-38"	36"-40"	38"-42"	41"-45"
A HALD WAIST RELAXED	11.5	12.5	13.5	14.5	16	17.5	19	20	21	22.5
B SIDE SEAM LENGTH	29.5	31	33	35	37	39	41	42	42	43



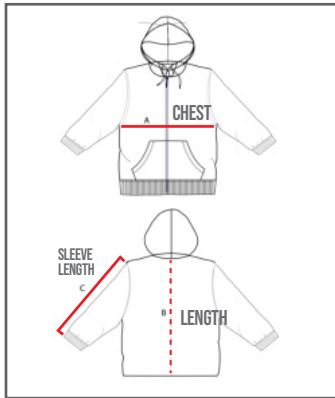
GRADES 11-12 GIRLS BLOUSE

SIZE	14	16	18	20	22	24
A TOTAL LENGTH (SNP)	25.5	27	28	29	30	31
B HALF CHEST	15	16.5	17.5	18	18.5	19
C SLEEVE LENGTH	22	23	24	25	26	26.5



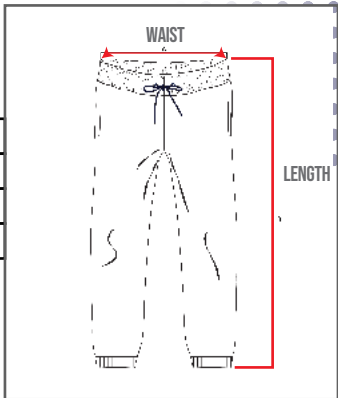
*DISCLAIMER:- +/-5% variation from the actual garment in line with the international tolerance level

SIZE GUIDE - ALL GRADES (PE & WINTER- GIRLS)



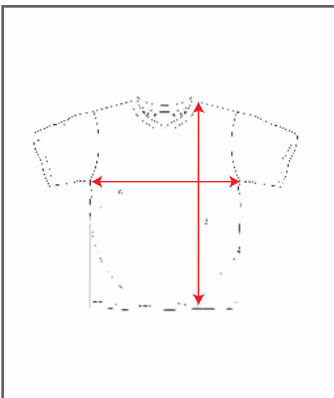
ALL GRADES UNISEX HOODIE

SIZE	2	4	6	8	10	12	14	16	18	20	22
AGE IN YEARS	3Y	4Y	5-6Y	7-8Y	9-10Y	11-12Y	13-14Y	15-16	M	L	XL
A HALF CHEST	13	14	15.5	17	18	20	21	22	23.5	25	26
B TOTAL LENGTH (SNP)	19	20	21	23	24	25	27	28	29	30	31
C SLEEVE LENGTH	16	17	18	19	20	21.5	23	24	25	26	27



ALL GRADES UNISEX TRACK PANT

SIZE	2	4	6	8	10	12	14	16	18	20	22	24
TO FIT WAIST	18"-22"	20"-24"	22"-26"	22"-26"	24"-28"	24"-28"	26'-30"	28"-32"	30"-34"	32"-36"	34"-38"	36"-40"
A HALF WAIST RELAXED	9	10	11	11	12	12	13	14	15	16	17	18
B LENGTH INCLUDING WAIST BAND	22	23	25	27	29	31	33	35	38	40	42	44

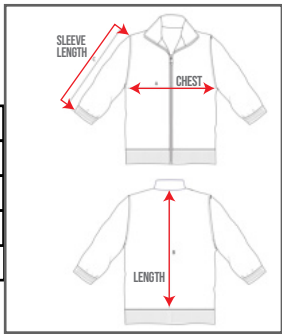


ALL GRADES UNISEX PET T SHIRT

SIZE	2	4	6	8	10	12	14	16	18	20	22	24	26
AGE IN YEARS	3Y	4Y	5-6Y	7-8Y	9-10Y	11-12Y	13-14Y	15-16	M	L	XL	2XL	3XL
A HALF CHEST	12	13	14	15	16	17	18	19	20	21	22	23	24
B TOTAL LENGTH (SNP)	18	19	20	21	22	23	25	26	27	28	29	29	30

ALL GRADES UNISEX WINTER JACKET

SIZE	2	4	6	8	10	12	14	16	18	20	22
AGE IN YEARS	3Y	4Y	5-6Y	7-8Y	9-10Y	11-12Y	13-14Y	15-16	M	L	XL
A HALF CHEST	13	14	15.5	17	18	20	21	22	23	24	25
B TOOTAL LENGTH INCL RIB	19	20	21	23	24	25	27	28	29	30	30
C SLEEVE LENGTH	16	17	18	19	20	21.5	23	24	25	26	27



*DISCLAIMER:- +/-5% variation from the actual garment in line with the international tolerance level



AL FAISAILIAH SCHOOL

THANK
YOU!

 THE STITCH CART
TRADING COMPANY

www.stichcart.com