

ADAPTA

1 TURN CONFIGURATION WITH 12 STEPS



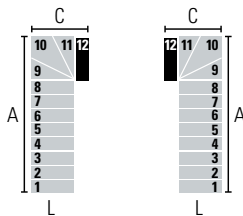
LEGENDA:

- Arrival step to upper floor
- Other steps

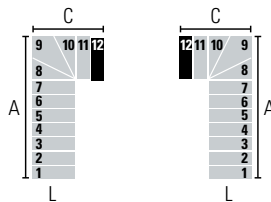
Using the following configurations, it is possible to determine the direction of climbing, entry and exit of the stair based on the number of steps.

The measurements indicate the footprint of the stair on the ground.

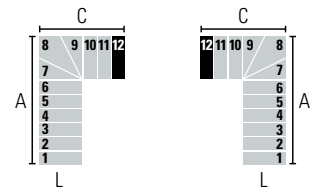
12 STEPS (13 RISERS) • Height between floors: Min. 228 cm - Max. 286 cm (Max. 318 cm with 'Extra Spacers' accessory)



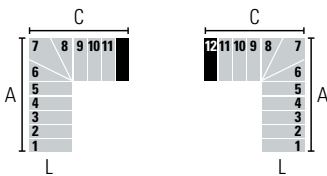
| L (cm) | A (cm) | | C (cm) | |
|--------|--------|-----|--------|-----|
| | Min | Max | Min | Max |
| 74 | 262 | 280 | 99 | 103 |
| 84 | 272 | 290 | 109 | 113 |
| 94 | 282 | 300 | 119 | 123 |



| L (cm) | A (cm) | | C (cm) | |
|--------|--------|-----|--------|-----|
| | Min | Max | Min | Max |
| 74 | 239 | 255 | 122 | 128 |
| 84 | 249 | 265 | 132 | 138 |
| 94 | 259 | 275 | 142 | 148 |



| L (cm) | A (cm) | | C (cm) | |
|--------|--------|-----|--------|-----|
| | Min | Max | Min | Max |
| 74 | 216 | 230 | 145 | 153 |
| 84 | 226 | 240 | 155 | 163 |
| 94 | 236 | 250 | 165 | 173 |



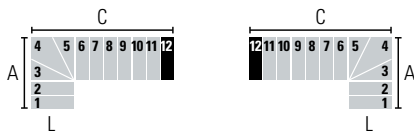
| L (cm) | A (cm) | | C (cm) | |
|--------|--------|-----|--------|-----|
| | Min | Max | Min | Max |
| 74 | 193 | 205 | 168 | 178 |
| 84 | 203 | 215 | 178 | 188 |
| 94 | 213 | 225 | 188 | 198 |



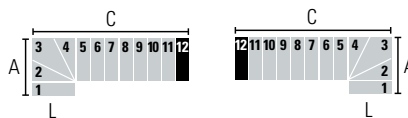
| L (cm) | A (cm) | | C (cm) | |
|--------|--------|-----|--------|-----|
| | Min | Max | Min | Max |
| 74 | 170 | 180 | 191 | 203 |
| 84 | 180 | 190 | 201 | 213 |
| 94 | 190 | 200 | 211 | 223 |



| L (cm) | A (cm) | | C (cm) | |
|--------|--------|-----|--------|-----|
| | Min | Max | Min | Max |
| 74 | 147 | 155 | 214 | 228 |
| 84 | 157 | 165 | 224 | 238 |
| 94 | 167 | 175 | 234 | 248 |



| L (cm) | A (cm) | | C (cm) | |
|--------|--------|-----|--------|-----|
| | Min | Max | Min | Max |
| 74 | 124 | 130 | 237 | 253 |
| 84 | 134 | 140 | 247 | 263 |
| 94 | 144 | 150 | 257 | 273 |



| L (cm) | A (cm) | | C (cm) | |
|--------|--------|-----|--------|-----|
| | Min | Max | Min | Max |
| 74 | 101 | 105 | 260 | 278 |
| 84 | 111 | 115 | 270 | 288 |
| 94 | 121 | 125 | 280 | 298 |