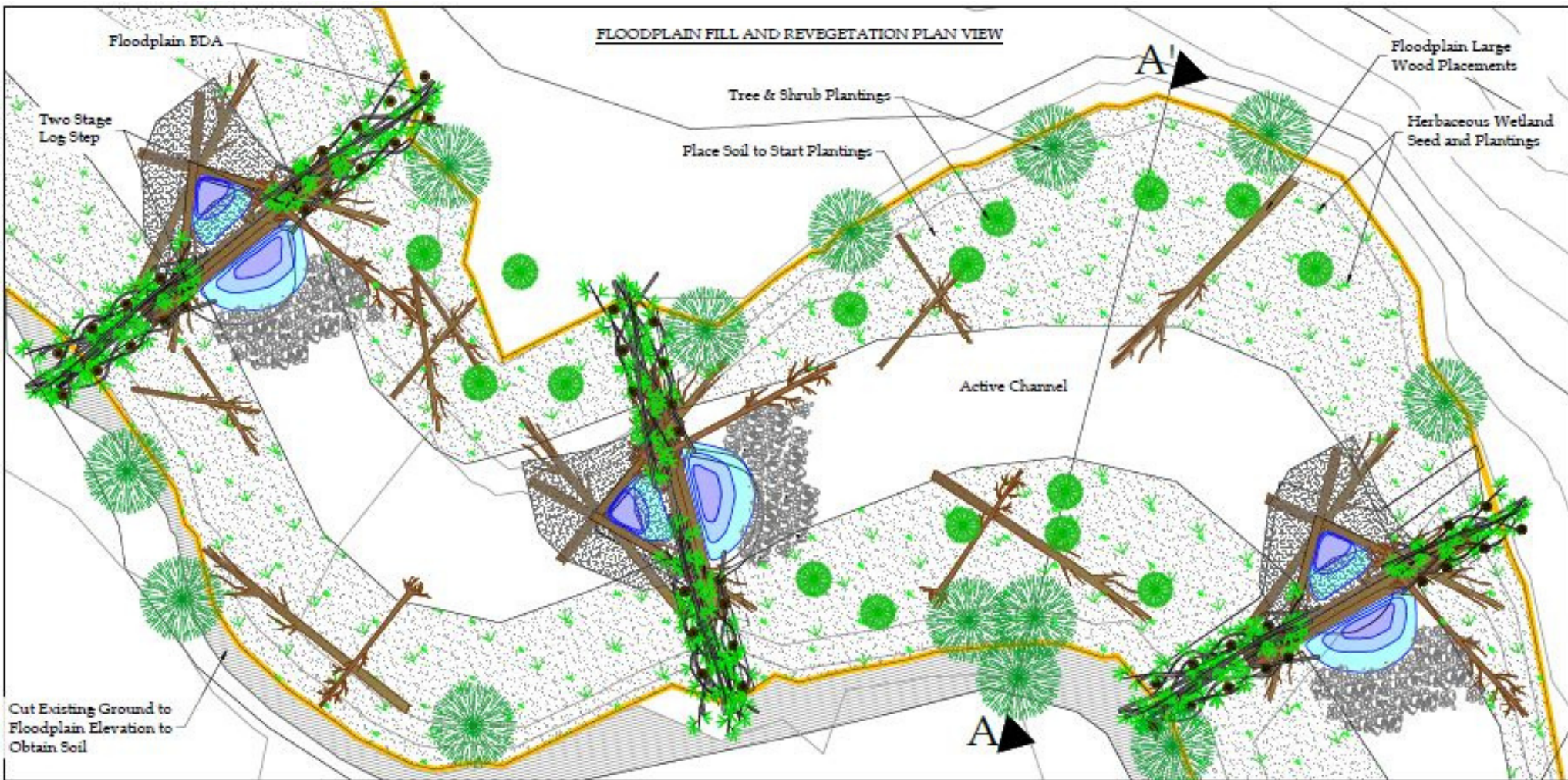




Dartford Creek Floodplain Reconnection Project Nov. 2023





This project will improve streamflow of approx. 700 linear feet of Dartford Creek, a tributary to the Little Spokane River, through installation of a series of post-assisted beaver dam analogs, large woody debris, riparian plantings, and bank restructuring.



Ten piezometers were installed along two transects perpendicular to the creek.





The piezometers will track how ground water levels fluctuate throughout the year and before and after the project to see if the reconnection of the floodplain raises the water table over time.

