

Liquitex

BASICS™ ACRYLIC

ACRYLICS 101: THE FUNDAMENTALS

There's no more versatile paint system in the world.

Acrylic paint is made of two carefully balanced elements – pigments and a water-based acrylic emulsion, which binds it all together. When you squeeze the paint out of the tube, the water in the emulsion starts evaporating into the air. Once it's all evaporated you're left with a dry, flexible acrylic film of color which is permanent, water-resistant and extremely stable.

Dries quickly

Cleans up with water while wet

Adjusts with mediums

Flexible

Permanent when dry

Low odor

Sticks to almost any surface

TECHNIQUES

Basics acrylic colors are ideal for all painting techniques plus:

Sketching & underpainting	✓
Color theory & mixing	✓
Collage & mixed media	✓

SURFACES

If your paint sticks to it, you can use it.*

Canvas	✓
Paper & board	✓
Wood	✓
Masonry	✓
Metal	✓
Styrofoam	✓
Stone	✓
Ceramics	✓
Textiles	✓

*If applying on a slick surface, sand or prime with gesso first.

TERMS EXPLAINED

AP SEAL

Liquitex Basics colors are independently tested by the Art and Creative Materials Institute at Duke University, and hold the Approved Product (AP) safety seal. This means they are certified to contain no materials in sufficient quantities to be toxic or harmful to humans or to cause health problems.

PIGMENT

Pigments are particles that dictate a paint color. Some paints contain just a single pigment, others more than one. The individual pigments are listed on the tube and color chart.

OPACITY/TRANSPARENCY

Each pigment has its own character so the symbol tells you if it's opaque, semi-opaque or transparent.

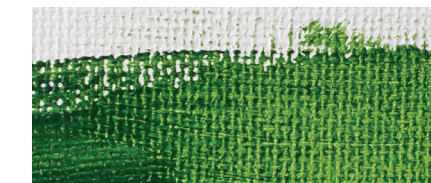
LIGHTFASTNESS

Lightfastness is how long the color resists fading. Each pigment is rated on scale by the American Society for Testing & Materials (ASTM). Basics paints are all ASTM I (excellent) or II (very good) and considered permanent and lightfast* for 50-100+ years in gallery conditions.

*Fluorescent and metallic paints are not given a rating by the ASTM.



MASSTONE
When a color is straight from the tube – rich and concentrated.



UNDERTONE
When a color is applied thinly or diluted with water – generally more transparent.



TINT
When a color is mixed with white.



SHADE
When a color is mixed with black.

MEDIUMS

How do you make your acrylic paint work harder?

These mediums cover all the bases and are a good introduction before you enter the world of professional mediums. They let you prep your surfaces, adjust viscosity, flow and sheen. You can change paint opacity, drying time and texture, or protect your finished work.



GESSO
An opaque matte white ground. Apply to surfaces to seal and prepare before painting.



GLOSS FLUID MEDIUM
A colorless acrylic medium. Mix with color to thin and add transparency or use on its own as a collage adhesive. Gives an archival gloss finish.



GLOSS GEL MEDIUM
A colorless acrylic gel medium. Mix with color to thicken, add transparency and slow drying time. Gives an archival gloss finish.



GLOSS HEAVY GEL
As Gloss Gel Medium, but thicker. Ideal for impasto applications.



MATTE FLUID MEDIUM
A colorless acrylic medium. Mix with color to thin and add transparency or use on its own as a collage adhesive. Gives an archival matte finish.



MATTE GEL
A colorless acrylic gel medium. Mix with color to thicken, add transparency and slow drying time. Gives an archival matte finish.



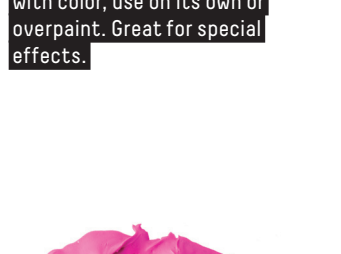
IRIDESCENT MEDIUM
A reflective metallic medium. Mix with color or use on its own.



COARSE TEXTURE MEDIUM
A gritty effects medium. Mix with color, use on its own or overpaint. Great for special effects.



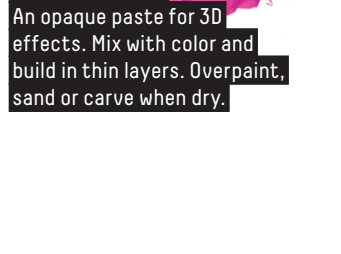
LIGHT MODELING PASTE
A lightweight opaque paste for 3D effects. Mix with color and build in thin layers, or overpaint once dry.



MODELING PASTE
An opaque paste for 3D effects. Mix with color and build in thin layers. Overpaint, sand or carve when dry.



GLOSS VARNISH
Protects your finished work from UV damage, dirt and dust, with an archival gloss finish.



MATTE VARNISH
Protects your finished work from UV damage, dirt and dust, with an archival matte finish.

LIQUITEX BASICS ACRYLIC

Everyday acrylic paints, mediums and tools. For all types of artists. All types of painting. Formulated with artist-grade pigments.

Paint character

Medium viscosity	✓
Fine art pigments	✓
Satin finish	✓
Easy blending	✓
Range of opacities	✓
Essential mediums & tools	✓
Fully AP certified for safety and educational use	✓

*Fluorescent and metallic paints are naturally less lightfast.

COLOR CHART

A palette of 72 colors made with the highest quality fine art pigments.

You'll find all your essentials as well as some specialty colors, all with a good pigment load. It's balanced for beginners and artists with more experience, for fine art and design work.



159 Cadmium Yellow Light Hue PY2	045 Transparent Yellow PY18	410 Primary Yellow PY8	830 Cadmium Yellow Medium Hue PY11 + PY13	163 Cadmium Yellow Deep Hue PY14 + PY16	620 Vivid Red Orange PY19 + PY17	720 Cadmium Orange Hue PY15	510 Cadmium Red Light Hue PY18 + PY19	351 Cadmium Red Medium Hue PY10 + PY11	321 Pyrrrole Red PY54
282 Naphthol Crimson PY18	047 Transparent Red PY19	311 Cadmium Red Deep Hue PY19 + PY17	116 Alizarin Crimson Hue PY19 + PY17	415 Primary Red PY19	810 Light Portulac Pink PY18 + PY16 + PY18	046 Rose Pink PY18 + PY16 + PY12	500 Medium Magenta PY18 + PY12	114 Quinacridone Magenta PY12	590 Brilliant Purple PY14 + PY13 + PY15
115 Deep Violet PY12 + PY13 + PY15	391 Prism Violet PY12 + PY13 + PY15	263 Purple Gray PY13 + PY18 + PY16	108 Dioxazine Purple PY13 + PY15	880 Light Blue Violet PY19 + PY13 + PY15	320 Prussian Blue Hue PY15 + PY13 + PY16 + PY17	380 Ultramarine Blue PY19	381 Cobalt Blue Hue PY19 + PY13 + PY16	318 Phthalocyanine Blue PY13	420 Primary Blue PY13
470 Cerulean Blue Hue PY19 + PY13 + PY16 + PY17	570 Brilliant Blue PY19 + PY13 + PY16	770 Light Blue Permanent PY19 + PY13 + PY16	046 Turquoise Blue PY19 + PY13 + PY16	860 Bright Aqua Green PY19 + PY13 + PY16	142 Blue Gray PY15 + PY13 + PY16 + PY17	317 Phthalocyanine Green PY19	224 Hooker's Green Hue PY19 + PY13 + PY16	350 Permanent Green Deep PY19 + PY13	312 Light Green Permanent PY19 + PY13 + PY16
218 Light Olive Green PY19 + PY13 + PY16 + PY17	222 Lime Green PY19 + PY13 + PY16	840 Brilliant Yellow Green PY19 + PY13 + PY16 + PY17	205 Green Gray PY19 + PY13 + PY16	530 Bronze Yellow PY19 + PY13 + PY16 + PY17	416 Yellow Oxide PY19	601 Naples Yellow Hue PY19 + PY13 + PY16	330 Raw Senna PY19 + PY13 + PY16 + PY17	335 Red Oxide PY19 + PY13	127 Burnt Senna PY19 + PY13 + PY16
331 Raw Umber PY19	128 Burnt Umber PY19	134 Unleached Titanium PY19 + PY13 + PY16 + PY17	436 Parment PY19 + PY13 + PY16 + PY17	430 Transmix White PY19	432 Titanium White PY19	599 Neutral Gray 5 PY19 + PY13 + PY16	210 Pavane's Gray PY19 + PY13 + PY16 + PY17	244 Ivory Black PY19	270 Nix Black PY19
238 Iridescent White PY19	049 Iridescent Graphite PY19	052 Silver PY19	051 Gold PY19	054 Bronze PY19	053 Copper PY19	091 Fluorescent Yellow PY19	092 Fluorescent Orange PY19	093 Fluorescent Red PY19	097 Fluorescent Pink PY19
		094 Fluorescent Blue PY19	095 Fluorescent Green PY19						

KEY TO CODING

OPACITY RATING	ASTM LIGHTFASTNESS RATING
■ Opaque	⊙ Excellent
■ Semi-Opaque	⊙ Very good
□ Transparent	⊙ Not ASTM rated

BRUSHES

Liquitex Basics brushes are the perfect way to begin.

Made with long handles and white nylon bristles, they're durable, easy to clean and hold good amounts of color. Their medium-soft texture bristles give the ideal responsiveness for Liquitex Basics paints and any soft/medium-bodied acrylics. Choose from five shapes in a range of sizes.

ROUND
A round or pointed tip bristle for detail, glazing, controlled washes and filling in small areas.

BRIGHT
A short, flat bristle with edges curved in at the tip, great for short, controlled strokes.

FLAT
A rectangular, square-ended bristle for bold strokes and chisel-like lines, great for washes, impasto, filling in wide spaces and straight edges.

FILBERT
A flat, oval-shaped bristle for broad strokes with a soft edge, the filbert is super versatile and great for blending.

FAN
A flat, fan-shaped bristle for smoothing, blending, softening, feathering and adding textural effects.

AS YOU PROGRESS

As you progress, or you get more serious, you may want to start exploring the more specialist lines of Liquitex Professional.

Higher pigment loads give stronger colors, while a wider range of mediums let you create new effects. And you can try different acrylic paint textures and formats – from inks to fine art spray paint.



LIQUITEX BASICS	LIQUITEX PROFESSIONAL
Good pigment load	High pigment load
Good range of colors	Wide range of colors
One consistency of paint (medium viscosity)	Choice of paint viscosities and formats
Straightforward pricing – same prices across all colors of the same size	Different series pricing according to pigment and manufacturing complexity
Choice of 12 mediums	Choice of 48 mediums

The everyday acrylic range.

Learn more at LIQUITEX.COM