

BIHART

HANDMADE LUXURY



LOOKBOOK
COLLECTION 2023



HANDMADE LUXURY

About Bihart

“Art is too important not to share.”

– Romero Britto

The local crafts of any place reflect its history, heritage and culture.

Bihar is an ancient state, rich in history with multiple overlaps of heritage and culture. We have an eclectic mix of local crafts which is buried deep into our traditions.

The world knows only of our two most illustrious crafts - Madhubani and Bhaglapur Tussar silk, and attributes only these to Bihar. The other crafts are either lost or soon dying.

Bihart is an attempt to uplift and revive these crafts. While keeping the soul of the craft intact, we have tried to infuse new styles, motifs and designs and explored them on various media to make functional products.



bihart

HANDMADE LUXURY

A woman with dark hair is wearing a white, short-sleeved, pleated anarkali with a subtle pattern. She is also wearing a vibrant coral-colored shawl with a wide border. The background is a light grey gradient with a white silhouette of a woman's head and shoulders on the right side.

**Ball Gown Pleated Sujani Embroidered
Anarkali In Cotton Silk**

**Minamalistic yet
Detailed Styling**



Versatile Clothing



Mixed crafts - Sujani
with Tie and Dye



Zero Waste - Chindi
with Sujani



A woman with long, wavy brown hair is shown from the back, wearing a white silk kurti and a red dupatta. The kurti features a prominent vertical pleated panel down the center back, which is accented with horizontal red stripes. The dupatta is a vibrant red color and is draped over her shoulders. The entire scene is framed by a thin black border.

Fabric Manipulation
on Silk Kurtas




Bold Colour Fusions

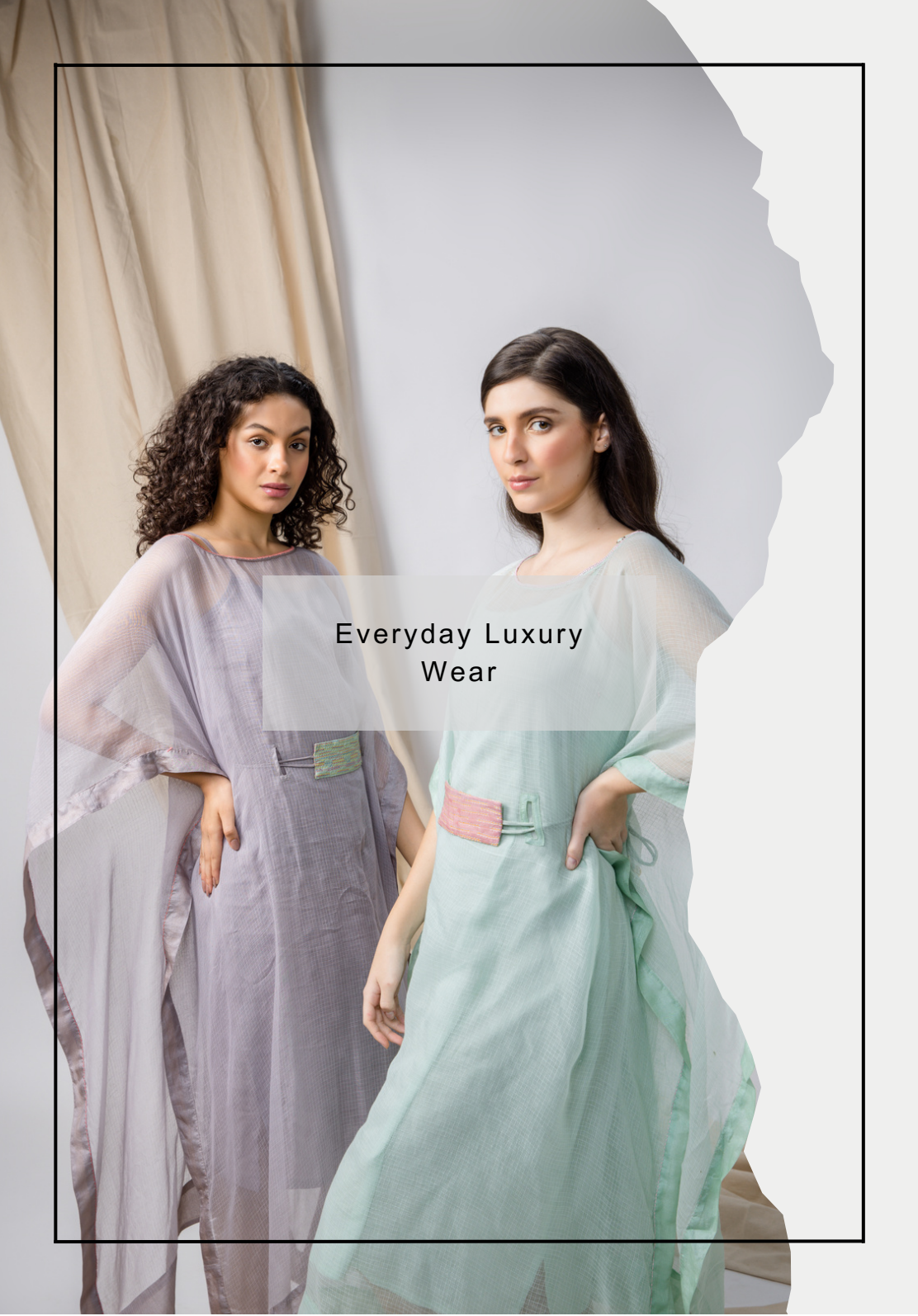


Handcrafted
Luxury

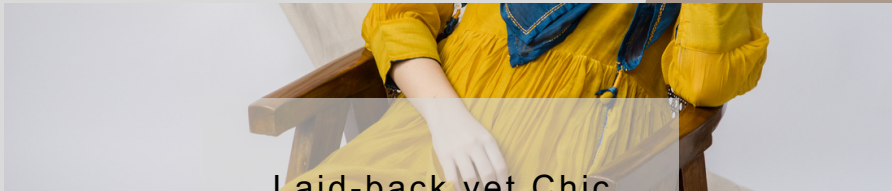




Silk Dresses accented
with our Crafts



Everyday Luxury
Wear




Laid-back yet Chic






Handloom
Redefined



**Handloom Twill
Jacket with Kisan
Charkha Skirt**




Chindi Sujani Jacket
for the sustainability
conscious



Kisan Charkha
western wear



Bold colours with
Delicate
Sujani

A man with dark hair and a beard is wearing a bright yellow kurta with silver geometric patterns. He is standing against a light gray background with a large, dark shadow of his profile cast to the right. The image is framed by a thin black border.

**Sujani And Applique
with an Abstract Twist**



Pure Tussar Silk
Kurta



Quilted Indigo Tie-Dye

Quirky Applique
Tote Bag





Chindi Multi-Purpose
Pouches



Our Bihart Weaves

Bihart's Handwoven textiles or fabrics are created by manually interlacing threads or yarns using a weaving process. This process involves crossing horizontal threads (called weft) through vertical threads (called warp) to create a stable and cohesive piece of fabric. Our Handwoven fabrics are made on a Pit loom, which is a framework that holds the warp threads in place while the weft threads are woven through them.

Our handwoven fabrics have a unique and often textured look due to the manual weaving process. They can vary in texture, color, pattern, and design depending on the type of fibers used, the weaving technique, and the weaver's skill.

Bihart's Handwoven textiles are valued for their craftsmanship, individuality, and the connection they provide to traditional weaving methods infused with modern designs.



HANDMADE LUXURY

Some of our weaving techniques are:

Fish Net Weave

The fishnet weave is a traditional and authentic handweaving technique of Bihar. Unlike other weaving clusters where the weavers use multiple shafts to weave guage fabric, weavers in Bihar weave fishnet using only two shafts.



HANDMADE LUXURY

Extra Weft Weave:

Extra weft weaving is a fascinating display of hand skill, where each motif is created by inserting an extra weft to the standard weft that holds the warp together. When the weaver weaves the weft yarn, the shuttle intertwines with the warp yarn and a base fabric emerges on the loom. It is on this base fabric that an extra weft motif is deftly woven in by using a small spool of yarn.



HANDMADE LUXURY

Twill Weave:

Twill weave is a type of weaving pattern characterized by its diagonal parallel ribs or lines on the fabric's surface. It is created by interlacing the weft thread over and under multiple warp threads in a regular pattern.

This results in a distinctive diagonal pattern that sets twill weave apart from other weaving patterns like plain weave.

In twill weave, each weft thread passes over a certain number of warp threads and then under a certain number of warp threads before starting the pattern again. The point where the weft goes over and under the warp threads creates the diagonal lines. This weaving pattern creates a strong and durable fabric with a textured appearance.



bihart

HANDMADE LUXURY

Bihart Crafts

The two crafts that our artisans specialise in are Sujani and Appliqué.

Sujani: This is a textile expression art embroidery and is centuries old. Bihart works with three clusters of Sujani artisans to create some of the most beautiful and intricate designs.

The embroidery is done in running stitch and is outlined in embroidered chain stitch.

Look out for our 'Village Narrative' bedcovers which are covered in this art form expressing the village life of the artisans. No two bedcovers are the same and it takes them months to make it.

Our modern take on the embroidery embellishes most of our products with its minimalistic yet eye-catching capabilities



HANDMADE LUXURY

Appliqué : It is not your regular patchwork. It is extra-fine. It is detailed and it is (on most products) made with silk.

Bihart artisans are excellent at their skill of surface appliqué and if all goes well, we will soon bring you some reverse appliqué (khatwa) next season.

Check out our human figure Appliqué tote bags - our favourites are the 'Gossip Girls' and the 'Gossip Boys'.



HANDMADE LUXURY





b i h a r t
HANDMADE LUXURY

Get In Touch!

CALL: 9899974414

www.bihart.in

  @bihart.in

Hira Place, Dak Bungalow Road
Patna, Bihar, 800001,
India

Opening Hours:
MON to SAT: 11:00AM - 06:00PM
SUN: Closed