

# FF918C series Bait Boat Fish Finder 500M Wireless Operating Range Manual



[www.luckyfishfinder.com](http://www.luckyfishfinder.com)




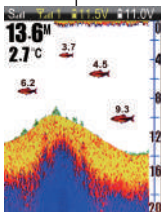
# **LUCKY<sup>®</sup> FF918C series Bait Boat Fish Finder** **500M Wireless Operating Range Manual**

**Thank you for choosing FF918C series  
bait boat fish finder.**

This amazing product is specially designed for amateur and professional fishermen alike, to find out the location of fish, depth, and bottom contour of water. The unit can be used in ocean, river, or lake and is fantastic for detecting schools of fish in any particular area. Using amazing and innovative technology, this portable fish finder is the ideal tool to bring the fish to you!



This user mode allows you to operate the FF918C series long-distance wireless transmitter and cable sonar sensor. When signal indicator {  } is displayed on the screen, the unit is in long-distance wireless mode.



wireless sonar sensor signal  
connect indicator

## Contents

3	Using the wireless user mode
3-4	Display view
5	Installing the batteries
6-7	Powering ON and OFF
7	The menu system
8	User mode
8	Sensitivity
9	Depth low limit
9-10	Depth upper limit
10	Shallow alarm
10-11	Fish icon
11	Fish alarm
11	Units
12	Color tone
12	Battery alarm
12	Language
12	Brightness
13	Chart speed
13-14	Maintenance
14-15	Trouble
16	Product specifications

## 1. Using the wireless user mode

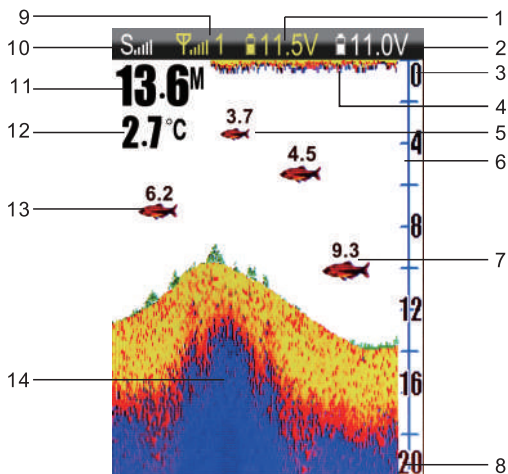
This FF918C series fish finder is designed to be used with a bait boat. You can install the long-distance transmitter to your bait boat, power on the transmitter, then you can power on your fish finder and enjoy fishing.



## 2. Display view

The FF918C series displays underwater information in an easy-to-understand format. The top of the display corresponds to the water surface at the transducer, and the bottom of the display corresponds to the depth range automatically selected for the current water depth. The bottom contour varies as the depth under the boat changes. Digital readouts provide precise information for depth, fish, and water temperature.

As the boat moves, terrain and bottom composition variations are displayed. Fish, baitfish, and thermoclines (underwater temperature changes) are displayed when detected. Underwater conditions vary greatly, so some experience and interpretation are needed to realize all the benefits of the FF918C series use the picture as a guide to the most common conditions and practices using the FF918C series over known bottom types.



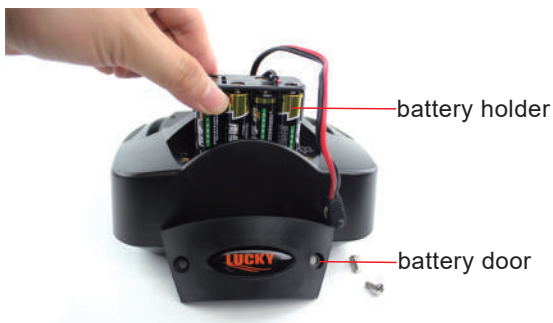
- |                                 |                       |
|---------------------------------|-----------------------|
| 1. Transmitter Battery Capacity | 8. Depth Low Limit    |
| 2. Display Battery Capacity     | 9. Signal Indicator   |
| 3. Depth Upper Limit            | 10. Sensitivity       |
| 4. Water Surface Line           | 11. Water Depth       |
| 5. Small Fish Icon              | 12. Water Temperature |
| 6. Depth Ruler                  | 13. Medium Fish Icon  |
| 7. Large Fish Icon              | 14. Bottom Contour    |

### 3. Installing the batteries (Only for FF918C-WL)

1. With a screwdriver remove both screws located on either side of the battery door.
2. Insert the 8\*AA (not included) into the battery holder like in the picture.

NOTE: It is recommended that only high-quality alkaline batteries to be used.

3. Reattaching the battery door.
4. Reattach the battery door to the case using a screwdriver. Partially insert one screw and then the other. Fully seat the screws.
5. Plug the power cable connector into the fish finder to make it ready for use.



## 4. Powering ON and OFF

Press the bottom for 3 seconds and release the MENU key to power the FF918C series on. Press and hold the MENU key until the unit shuts down to power off.



1. Up arrow key

2. Mode key

3. Power/ Menu key

4. Sensitivity key

5. Down arrow key

6. Light key

When the FF918C-WL/FF918CS-WL powers on, the will temporarily display on the screen and last for 3 seconds. Then will show



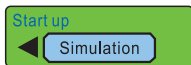
From this menu, use the arrow keys to select either Start Up, Simulation.

If you do nothing, the unit will default to normal on the water use.

**-Use Start-Up for the water use.**



**-Use Simulation for learning how to use the system with simulated sonar data; access Simulator by pressing the Down Arrow Key once**



## 5. The menu system

A simple menu system allows you to access your FF918C series adjustable settings. To activate the menu system, press the MENU key.

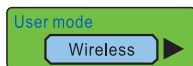
Press the MENU key repeatedly to display the FF918C series menu settings, one at a time. When a menu setting is on the display, use the UP and DOWN Arrow keys to adjust the menu setting. Menus setting are removed from the screen automatically after several seconds. In Normal operating mode, most menu settings saved to memory



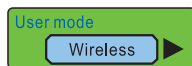
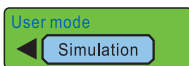
will not return to their default values when the unit is turned off. See individual menu choices for more information.

**NOTE:** Each time the MENU key is pressed, the backlight momentarily illuminates for easy viewing at night. Adjust the Brightness menu setting to keep the backlight on.

## 5.1 User mode



Use the User Mode menu choice to change between these two user modes.



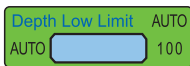
## 5.2 Sensitivity



Press the MENU key until Sensitivity appears. Sensitivity controls how much detail is shown on the display. Increasing the Sensitivity shows more sonar returns from small baitfish and suspended debris in the water; however, the display may become too cluttered. When operating in very clear water or greater depths, increased sensitivity shows weaker returns that may be of interest. Decreasing the sensitivity eliminates the clutter from the display that is sometimes present in murky or muddy water. If Sensitivity is adjusted too low,

the display may not show many sonar returns that could be fish. (1-9).

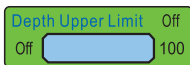
### 5.3 Depth low limit



Press the MENU key until Depth Low Limit appears. Auto is the default setting. When in auto, the lower range will be adjusted by the unit to follow the bottom. (Auto, 1-100)

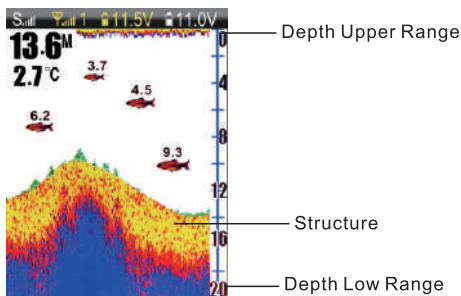
**NOTE:** In manual operation, if the depth is greater than the Depth Low Limit settings, the bottom will not be visible on the display. Select AUTO to return to automatic operation.

### 5.4 Depth upper limit



Press the MENU key until Depth Upper Limit appears. Select Auto to magnify the area around the bottom in order to reveal fish and structures close to the bottom that may not be visible during normal operation.

When Depth Upper Limit is set to Auto, the upper and lower Depth Ranges are automatically adjusted to keep the area above and below the bottom on the display. Select Off to return to normal operation. (Off, 1-100).



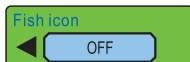
There is also a series of manual ranges that can be selected. The manual depth ranges are determined by the present depth conditions.

## 5.5 Shallow alarm



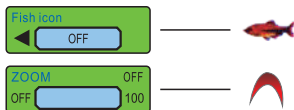
Press the MENU key until Shallow alarm appears. Select OFF for no Depth Alarm, or select 1 to 100 meters to set the alarm depth. An audible alarm sounds when the depth is equal to or less than the setting. (Off, 1-100)

## 5.6 Fish icon

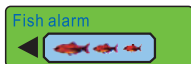


Make sure to press the MENU key until Fish Icon appears. Select either Off to view "raw" sonar returns, or On to view Fish symbols. Fish Icon uses advanced signal processing to interpret sonar returns and will display a Fish Symbol when very selective requirements are met.

A select number of possible fish returns will be displayed with their associated depth. (On, Off).

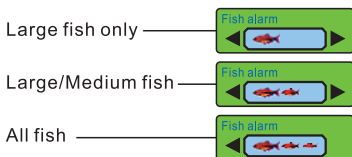


## 5.7 Fish alarm

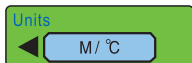


Press the MENU key until Fish alarm appears.

Select Off for no fish alarm, or one of the following symbols to set the alarm. An alarm will sound when the FF918C series detects fish that correspond to the alarm setting. Fish Alarm will only sound if Fish ID+ is also set to On. (Off, Large, Large/Medium, All).



## 5.8 Units



Make sure to press the MENU key until UNITS appears. UNITS select the units of measure. ( Ft/°F, Ft/°C, M/°F, M/°C, where °F stands for Fahrenheit and °C stands for Celsius )

## 5.9 Color tone



Make sure to press the MENU key until Color Tone appears. Selects the method used to represent the bottom and structure of the display. ( Red, Grey, Blue )

## 5.10 Battery alarm



Make sure to press the MENU key until Battery Alarm appears. Select Off or 8.6 to 13.5 Volts. Battery Alarm sounds when the input battery voltage is equal to or less than the menu setting. (OFF, 8.6 to 13.5 Volts )

## 5.11 Language



Press the MENU key until LANGUAGE appears. The FF918C series fish finder has twenty-two language choices. (English, Russian, German, Italian, Spanish, French, Japanese, Polish, Portuguese, Korean, Danish, Dutch, Greek, Swedish, Finnish, Czech, Romanian, Hungarian, Slovak, Bulgarian, Chinese, Ukrainian)

## 5.12 Brightness



Press the MENU key until Brightness appears. Use the backlight for night fishing. Select 1-9 to activate

the backlight at the desired level.

### 5.13 Chart speed



Press the MENU key until CHART SPEED menu appears. Select a setting from 1-9 to increase or decrease the chart speed, where 1 is the slowest and 9 is the fastest chart speed.(1 to 9)

## 6. Maintenance

Follow these simple procedures to ensure your FF918C series continues to deliver top performance.

**6.1** If the unit comes into contact with salt spray, wipe the affected surfaces with a cloth dampened in fresh water.

**6.2** Do not use a chemical glass cleaner on the lens - this may cause cracking in the lens.

**6.3** When cleaning the LCD protective lens, use a chamois and non-abrasive, mild cleanser. Do not wipe while dirt or grease is on the lens. Be careful to avoid scratching the lens.

**6.4** If your boat remains in the water for a long period, marine growth can reduce the effectiveness of the transducer. Periodically clean the face of the transducer with liquid detergent.

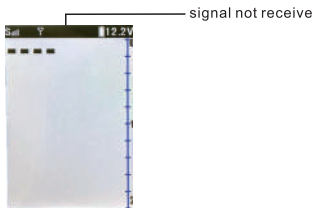
**6.5** If your boat remains out of the water for a long period of time, it may take some time to wet the transducer when returned to the water. Small air bubbles can cling to the surface of the transducer and interfere with proper operation. These bubbles dissipate with time, or you can wipe the face of the transducer with your fingers after the transducer is in the water.

**6.6** Never leave the unit in a closed car or trunk - the extremely high temperatures generated in hot weather can damage the electronics.

## 7. Trouble

### The FF918C series loses signal in wireless User Mode.

If the FF918C series, while in Wireless user mode, is not able to get an RF signal from the Wireless sonar sensor, the display will stop updating and the NO SIGNAL will be displayed after several seconds. Whenever reception is lost or the Wireless sonar sensor pulled out from the water for more than a few seconds, the picture will be



displayed until the Wireless sonar sensor is placed back in the water and reception is regained.

**7.1** The Wireless sonar sensor uses line-of-sight wireless technology. If objects are placed between the FF918C series and the Wireless sonar sensor, reception may be lost.

**7.2** The Wireless sonar sensor depth range is 3 to 328feet (1 to 100 meters). Erratic readings may occur in water that is shallower than 3 feet. In addition, because of the nature of sonar, this product is not intended for use in swimming pools or small enclosed bodies of water.

**7.3** Reeling the Wireless sonar sensor too fast can cause loss of signal and the screen will freeze.

**7.4** The Wireless sonar sensor may not obtain its maximum RF distance of 1640 feet unless the water is smooth. Waves or chops may reduce the RF range significantly.

**7.5** The display shows fluctuating depth readings and excessive clutter, including vertical bars that may be drawn on top of fish icons.

**7.6** The screen jumps and the bottom has an abrupt change; sometimes a vertical line is missing or a black line from top to bottom is displayed.

**7.7** This screen image jump is due to an automatic change in depth. New returns graphed at a different scale will not match up with the historic data already graphed at a higher or lower scale. Vertical lines can also occur as the radio signal from the Wireless sonar sensor is lost and then regained in rough water conditions.



## **8. Product specifications**

- 1) Display: 3.5inch MVA TFT LCD
- 2) Sonar operation frequency: 200KHz
- 3) Back lighting: On/off White LED
- 4) Power requirement:11.5-13.5V DC / 8xAA
- 5) Sensor coverage: 45 degrees
- 6) Depth range max/min: 328feet(100meters)  
/3 feet(1meter)
- 7 ) Operational range: 1640 feet (500meters)