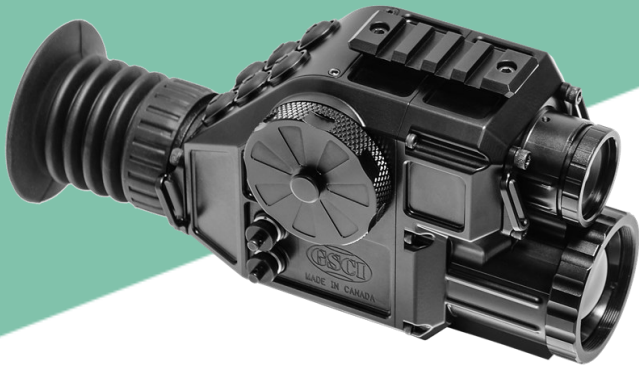


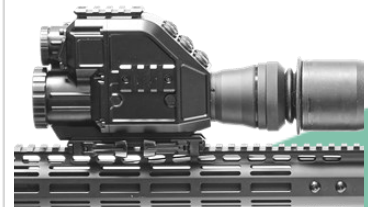


ADVANCED PHOTONICS

FUSION MULTI-CHANNEL SIGHT QUADRO-S



The QUADRO-S is the augmented vision multi-purpose system for tactical surveillance, observation, as well as aiming and engagement at short- and medium-range distances. Along with selecting between visible/near-infrared and far-infrared (thermal) channels individually, GSCI's Unique Patented technology allows to produce and display real-time, delay-free *fusion* image that superimposes all ranges of the spectrum from its sensors to successfully detect any target and defy poor lighting or weather conditions. Wide field of view allows for better situation awareness. The unit is small and lightweight, and yet made of a hard-anodized aluminum for added strength and shock resistance.



KEY FEATURES

- ◆ 100% Target Detection Capability
- ◆ Compact and Versatile
- ◆ Multi-Mode 24/7 Operation
- ◆ High Situational Awareness
- ◆ Auto-NUC: No Calibration Needed
- ◆ Universal Power Solution

MAIN APPLICATIONS

- ◆ Defence
- ◆ Security
- ◆ Border Patrol
- ◆ Special Forces
- ◆ Surveillance
- ◆ Reconnaissance



Designed, Developed, Manufactured by GENERAL STARLIGHT COMPANY INC.

120 WHITMORE ROAD, UNIT 20, WOODBRIDGE, ONTARIO, L4L6A5, CANADA

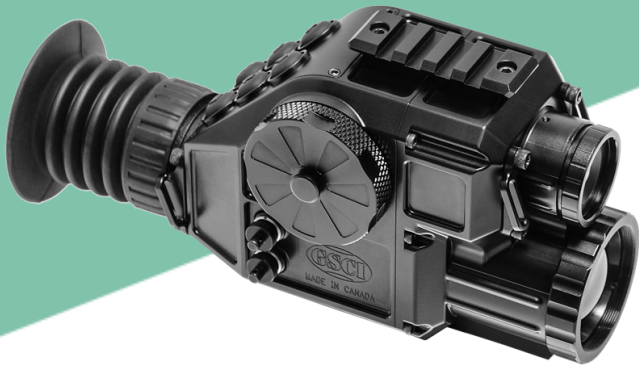
WWW.GSCI1.COM | GSCI@GSCI1.COM | +1.905.850.0990

DISCLAIMER. Technical description, certain optical-electronic-mechanical features of the product shown herein and/or some of its parts/components may not precisely represent the actual device and are subject to change without prior notice by the sole discretion of General Starlight Company, Inc. Mass of the product represents measurable weight of all components this product consists of, such as optics, mechanics and electronics. Weight of Image Intensifier tubes may vary depending on the type and make of Image Intensifier tube being used and therefore is listed separately. Dimensions of the product represents measurable size of the body, including all optical components attached and in fully folded position. Dimensions of additions such as mounting brackets, eyecups, objective lens covers, and/or battery extensions may vary and therefore are not listed herein. Copyright © 1992-2021 General Starlight Co., Inc. Canada. All rights reserved.



ADVANCED PHOTONICS

FUSION MULTI-CHANNEL SIGHT QUADRO-S



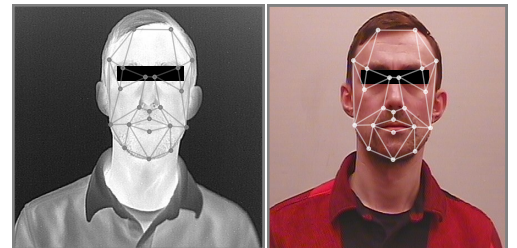
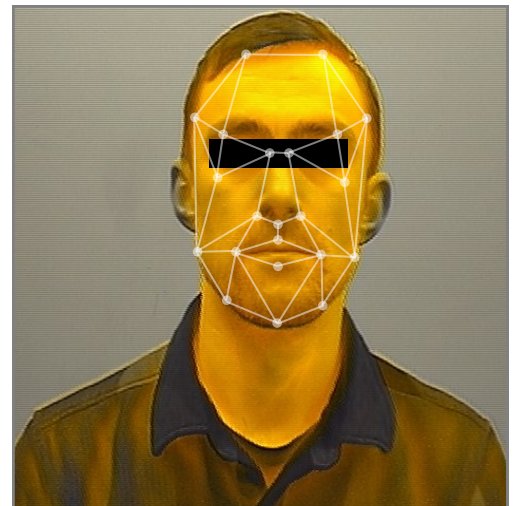
FACE RECOGNITION TECHNOLOGY READY.

The QUADRO lineup is designed utilizing GSCI's patented technology that produces and displays real-time, delay free fusion image that superimposes both spectral ranges covered by its sensors. Besides a number of unique features, this device combines consequential technologies to produce an image allowing for facial recognition in low light or night conditions. The data recorded can be used for enhanced real-time biometrics and post mission forensic analysis for covert nighttime operations. Using this type of technology for recognition at nighttime has revolutionized warfare as it has proven extremely beneficial for informing a soldier that the individual is someone of interest and reducing risk of misidentification.

Fused images can be used in combination with biometric face databases/watch lists that only contain visible face imagery. The fusion technology allows taking advantage of both technologies and combining thermal and visible imagery to jointly preserve the shape of the entire face and appearance of the local identifying details.

Detecting objects that were difficult, or impossible, to see using current state-of-the-art thermal cameras was the main objective behind the design of the QUADRO systems, and all the functions can be done with a simple press of a button.

Additional Features such as Digital Edge Detection and Digital Detail Enhancement make Face Recognition even more effective

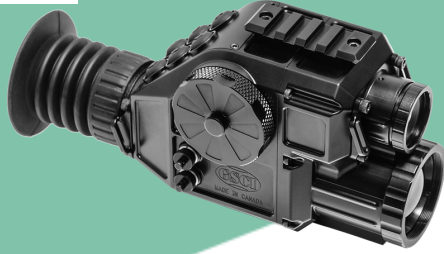


DISCLAIMER. Technical description, certain optical-electronic-mechanical features of the product shown herein and/or some of its parts/components may not precisely represent the actual device and are subject to change without prior notice by the sole discretion of General Starlight Company, Inc. Mass of the product represents measurable weight of all components this product consists of, such as optics, mechanics and electronics. Weight of Image Intensifier tubes may vary depending on the type and make of Image Intensifier tube being used and therefore is listed separately. Dimensions of the product represents measurable size of the body, including all optical components attached and in fully folded position. Dimensions of additions such as mounting brackets, eyecups, objective lens covers, and/or battery extensions may vary and therefore are not listed herein. Copyright © 1992-2021 General Starlight Co., Inc. Canada. All rights reserved.



ADVANCED PHOTONICS

FUSION MULTI-CHANNEL SIGHT QUADRO-S



OPTICAL PARAMETERS	Optical Magnification	1.4X
	Field of View	17.7°x13.3°
	Focusing Range	0.5m .. Infinity
	Eyepiece	Single
	Diopter Adjustment Range	-6 .. +4
	Eyere relief	Min. 50mm
SYSTEM PARAMETERS: CAPABILITIES AND SPECIAL FEATURES	Shot-Initiated FOV Feature (SIF)	Optional: Built-In Adjustable Shock Sensor
	Digital Passive Stadiametric Rangefinder (SRF)	Yes
	Digital Detail Enhancement Feature (DDE)	Yes
	Digital Edge Detection Feature (DED)	Yes
	Wide Dynamic Range Feature (WDR)	Yes
	Stow Safety Feature (SSF)	Yes
	Integrated 9-Axis Absolute Orientation HUD (Heads-Up Display)	Optional: 3-Axis Sensors - Magnetometer, Accelerometer and Gyroscope
	Integrated Compass	Optional
	Pitch / Roll / Azimuth Indications	Optional
	Power Saving Mode	Yes
	Real-Time Date-Time Stamp	Yes: Simplified, Extended, DTG Formats
	Digital Video Recorder with Real-Time Stamp	Optional: Comes with Removable 32GB microSD Card
	Electronic Reticules	Optional: 8+8 Patterns, Easy Zeroing / Calibration
	Detection Capability: Man (1.7x0.5m) / NATO Target (2.3x2.3m)	1660m / 2250m
	Hand-Held Configuration	Yes
	Conversion to Clip-On (In-Line) Sight	Yes
	Conversion to Standalone (Direct-View) Sight	Yes
	Tripod-Mountable	Yes
	User Profiles (Configurable)	Yes: 8
	Automatic/Manual Pixel Masking	Yes
Reset to Factory Defaults	Yes	
External Video Feed Protection	Yes	
Automatic Power Down Control	User-Configurable: 10 .. 60 minutes of inactivity	
THERMAL (LWIR) CHANNEL	FPA Type	Uncooled, a-Si, Shutterless, Silent, Auto-NUC (Uninterrupted Operation)
	FPA Resolution and Pitch	640x480, 17µm
	FPA Sensitivity (NETD)	<50mK
	FPA Refresh Rate	50Hz
	Digital Zoom	1X, 2X, 4X
	Imaging Modes	Monochrome (White-Hot / Black-Hot) and 8 Colour Palettes
DAY/NIGHT (VNIR) CHANNEL	Sensor Type	High-Performance CCD
	Sensor Size	1/3"
	Resolution	800x600
	Sensitivity	Up to 0.1 Lux
	Night Boost Mode	Yes
	VNIR Modes	Day/Night

DISPLAY	Internal Display	Full Size: 0.6-Inch Diagonal, AMOLED, Colour, 800x600
	Internal Display Contrast	>10000:1
IMAGE FUSION	Type	Real-time, Electronic
	Fused Channels	LWIR + VNIR
	Parallax Compensation	Electronic, Adjustable
	Heat Signature Opacity Range	User Adjustable: 0% .. 100%
ELECTRONICS, MECHANICAL, ENVIRONMENTAL FEATURES	Accepted Batteries	4 (Four) AA: Lithium Recommended
	Universal Port	Video-Out, Remote Control and External Power (4VDC .. 15VDC)
	Video Output Signal	CVBS 1Vpp @ 75 Ohm
	Battery Life on 4x AA	Up to 7 Hours
	Environmental Protection	Min. IP67, Nitrogen-Purged Housing
	Dimensions	170x91x70mm
	Weight	750 grams
	Operating Temperature	-40°C .. +50°C
	Storage Temperature	-55°C .. +65°C
	Body Material	Hard-Anodized Aluminum
Warranty	7 Years, Limited	

QUADRO-S is Available for Export Worldwide. Canadian Export Permit Required. GSCI provides assistance in obtaining the Permit.

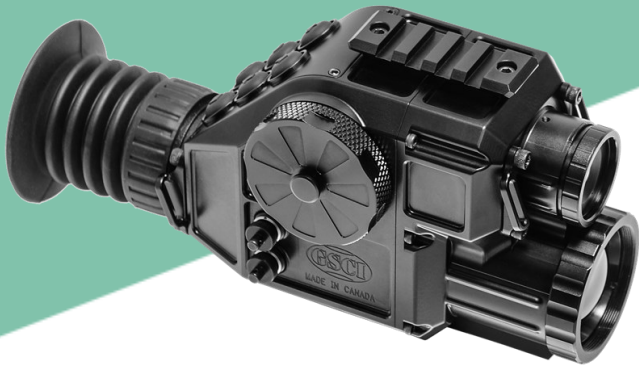


DISCLAIMER: Technical description, certain optical-electronic-mechanical features of the product shown herein and/or some of its parts/components may not precisely represent the actual device and are subject to change without prior notice by the sole discretion of General Starlight Company, Inc. Mass of the product represents measurable weight of all components this product consists of, such as optics, mechanics and electronics. Weight of Image Intensifier tubes may vary depending on the type and make of Image Intensifier tube being used and therefore is listed separately. Dimensions of the product represents measurable size of the body, including all optical components attached and in fully folded position. Dimensions of additions such as mounting brackets, eyecups, objective lens covers, and/or battery extensions may vary and therefore are not listed herein. Copyright © 1992-2021 General Starlight Co., Inc. Canada. All rights reserved.



ADVANCED PHOTONICS

FUSION MULTI-CHANNEL SIGHT QUADRO-S



MAIN CONFIGURATIONS



Hand-Held



Standalone Sight



Tripod-Mountable



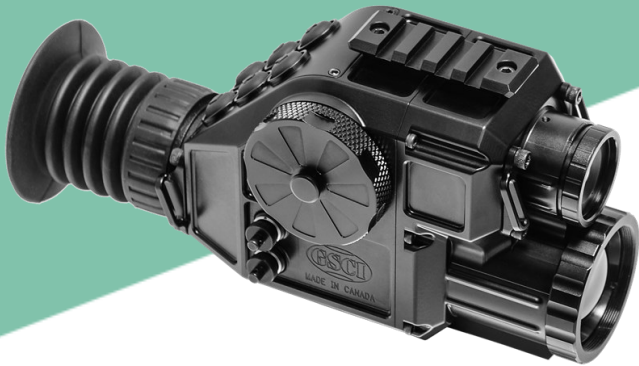
*Clip-On Sight
QUADRO-SC*

DISCLAIMER: Technical description, certain optical-electronic-mechanical features of the product shown herein and/or some of its parts/components may not precisely represent the actual device and are subject to change without prior notice by the sole discretion of General Starlight Company, Inc. Mass of the product represents measurable weight of all components this product consists of, such as optics, mechanics and electronics. Weight of Image Intensifier tubes may vary depending on the type and make of Image Intensifier tube being used and therefore is listed separately. Dimensions of the product represents measurable size of the body, including all optical components attached and in fully folded position. Dimensions of additions such as mounting brackets, eyecups, objective lens covers, and/or battery extensions may vary and therefore are not listed herein. Copyright © 1992-2021 General Starlight Co., Inc. Canada. All rights reserved.



ADVANCED PHOTONICS

FUSION MULTI-CHANNEL SIGHT QUADRO-S



STANDARD EQUIPMENT: WHAT'S IN THE BOX

1	Fusion Unit
2	Rubber Eyecup (Attached) + Spare
3	Front Lenses Protective Cover (Attached)
4	Hand Strap (for hand-held application)
5	Neck Cord
6	Quick Swap Battery Containers
7	USB Power Cable
8	Video-Out Cable
9	Soft Carrying Pouch
10	User Manual
11	7-Year Warranty with Activation Form
12	Waterproof Hard Carrying Case
13	Cleaning Kit (3-in-1 Multi-Pen + Cleaning Cloth)

OPTIONAL EQUIPMENT

A	Universal Remote Control Unit TRC-120 (Comes with connection cable)
B	Universal Multi-Voltage Battery Pack MVP-240 (Comes with connection cable)
C	Built-In Digital Video Recorder GS-DVR-INT (Comes with 32GB microSD card and SD adapter)
D	External Digital Video Recorder GS-EDVR (Comes with set of cables and 32GB SD card)
E	Portable Head-Mounted Display HMD-800-MOD (streams thermal video directly from the device, comes with connection cable)
F	Integrated 9-Axis Absolute Orientation HUD (Heads-Up Display), 3-Axis Sensors for Compass Reading, Inclinometer/Pitch Reading, and Level/Roll Reading
G	Dual Lever Adjustable Rifle Mount DLM (Picatinny, with fine-tune knobs for tolerance adjustments)
H	Heavy-Duty Quick Release Rifle Mount MAK-QR-BLASER (Blaser, Adapter included)
I	Heavy-Duty Quick Release Rifle Mount MAK-QR-PICATINNY (PICATINNY, Adapter included)
J	Heavy-Duty Rifle Mount MAK-PICATINNY (PICATINNY, Adapter included, Allen Key Included)
K	Adapter for MAK Mount: Regular Length (ADAPTER-REG) or Extended Length (ADAPTER-EXT)
L	Clip-On Adapter COA with Rubber Shroud
M	Recoil Absorbing System GSCI-RMS-50, Picatinny
N	Day Scope Adapter Clamp for COA for direct mounting onto daytime optics, CO-DSA (various sizes available)
O	Long Eyerelief Rubber Eyecup GSCI-EYECUP-LR
P	Tactical Infrared Illuminator IR-250S. Kit Includes IR-250S Unit (850nm), Remote Control, Picatinny Mount

DISCLAIMER: Technical description, certain optical-electronic-mechanical features of the product shown herein and/or some of its parts/components may not precisely represent the actual device and are subject to change without prior notice by the sole discretion of General Starlight Company, Inc. Mass of the product represents measurable weight of all components this product consists of, such as optics, mechanics and electronics. Weight of Image Intensifier tubes may vary depending on the type and make of Image Intensifier tube being used and therefore is listed separately. Dimensions of the product represents measurable size of the body, including all optical components attached and in fully folded position. Dimensions of additions such as mounting brackets, eyecups, objective lens covers, and/or battery extensions may vary and therefore are not listed herein. Copyright © 1992-2021 General Starlight Co., Inc. Canada. All rights reserved.