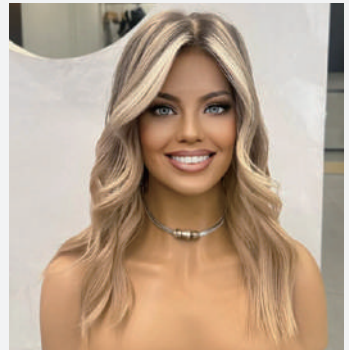
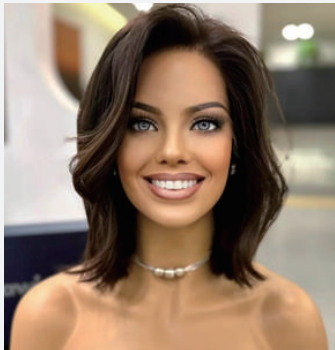


[www.vexorawigs.com](http://www.vexorawigs.com)

# vexorawigs

Wigvest In Your Style



[vexorawigs](#)



[hey@vexorawigs.com](mailto:hey@vexorawigs.com)



[vexorawigs](#)

VEXORAWIGS

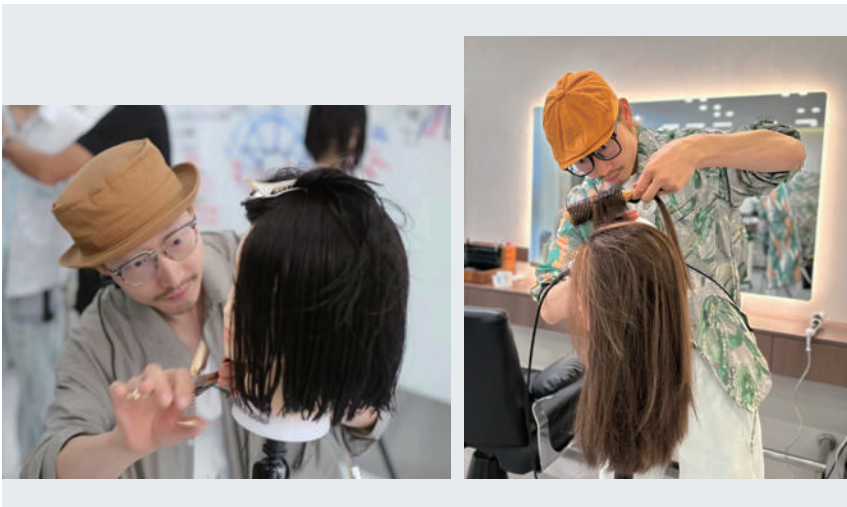
## Our Story

---

Wigs have a rich history, tracing back to ancient times, yet finding a wig that truly embodies quality and beauty has always been a challenge.

For too long, the wig industry has been marked by subpar products and inflated prices, leaving many women with limited options, particularly those facing hair loss challenges.

Adam Rao, the visionary behind VexoraWigs. Inspired by his wife's struggle with hormone-induced hair loss after childbirth, Adam embarked on a mission to create a wig brand that redefined standards.



VEXORAWIGS

## How It All Began

---

Adam witnessed firsthand the emotional toll his wife endured due to hair loss following childbirth. Determined to find a solution, he immersed himself in the world of wig craftsmanship and design.

Driven by love and empathy, Adam poured his heart and soul into establishing VexoraWigs. With a background in design and a keen eye for detail, he set out to create wigs that not only looked natural but also provided unparalleled comfort and confidence.



VEXORAWIGS

## Following His Passion

Adam's commitment to helping his wife and countless others facing similar challenges fueled the creation of VexoraWigs. Each wig is a testament to his dedication to excellence and his unwavering belief in the transformative power of quality hairpieces.

Not content with merely offering standard products, Adam opened a salon where he personally dyes each wig. This hands-on approach ensures that every VexoraWig is infused with Adam's meticulous attention to detail and his passion for helping women feel beautiful and empowered.



VEXORAWIGS

## Our Mission

At VexoraWigs, we believe that every woman deserves to feel confident and beautiful, regardless of her circumstances. Our mission is to provide high-quality wigs that empower women to embrace their unique beauty and live life to the fullest.



VEXORAWIGS

## Our Products

---

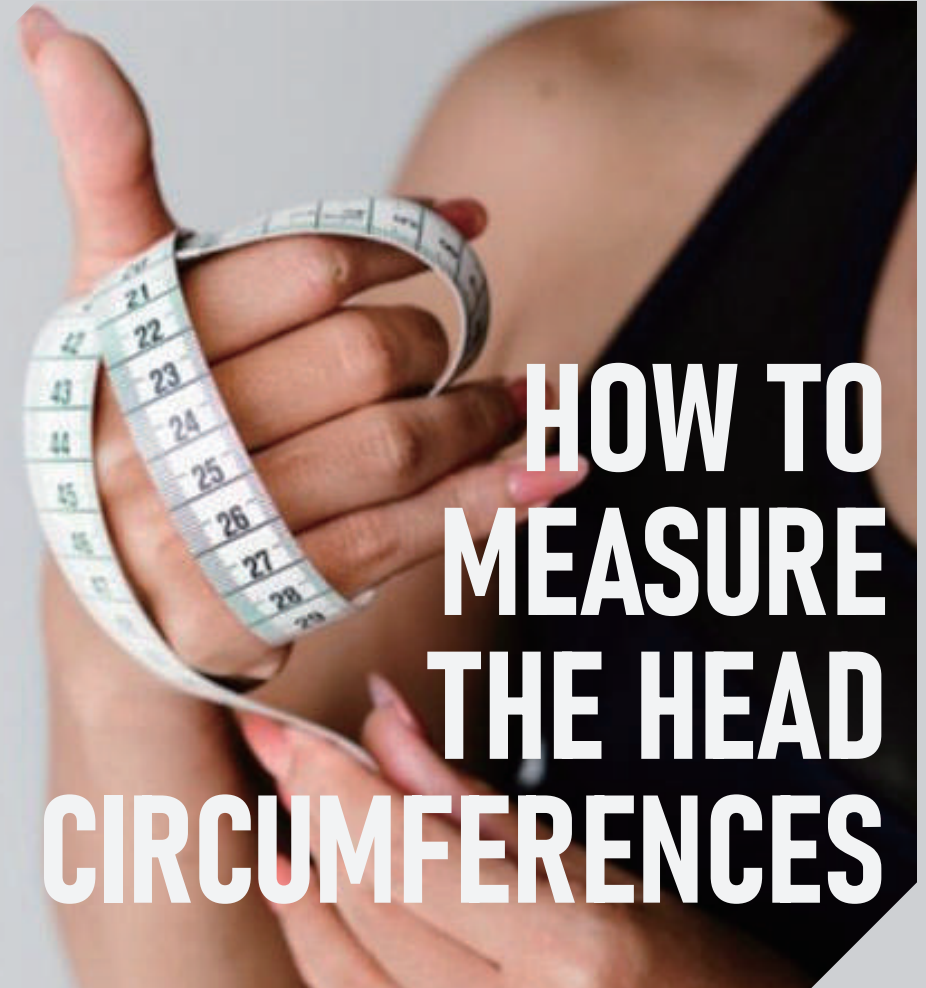
Each VexoraWig is a labor of love, meticulously crafted to replicate the look and feel of natural hair. Every wig undergoes Adam's expert dyeing process, resulting in vibrant, natural-looking colors that enhance the wearer's beauty.

Whether you're seeking a subtle enhancement or a complete transformation, VexoraWigs offers a range of styles, colors, and textures to suit every preference. With Adam's personal touch and commitment to excellence, VexoraWigs is more than just a wig brand—it's a symbol of strength, beauty, and empowerment.



---

## CHAPTER 1



---

© 2024, VexoraWigs



# How to Measure Your Head Circumferences?



Measuring head circumference before buying a wig is crucial for several reasons:

- 1. Ensuring the Right Fit: Wig sizes vary, so measuring ensures a comfortable fit.*
- 2. Enhancing Comfort: Proper fit means increased comfort.*
- 3. Increasing Safety: A well-fitting wig is safer, especially for activities like performances or daily wear.*
- 4. Saving Time & Money: Measuring avoids the need for returns or repurchases, saving both time and money.*

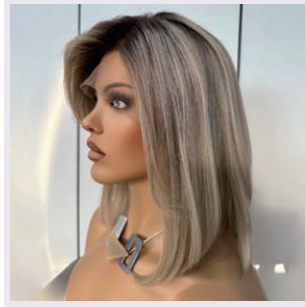
In summary, measuring head circumference before purchasing a wig is essential for comfort, safety, and cost-effectiveness.

## Vexorawigs Cap Size Chart

Currently, our website offers Small and Medium sizes that cater to the needs of most customers. However, if you require other sizes, we can customize Extra Small and Large wig caps based on the head circumference measurements you provide. Please feel free to contact our customer service team at [hey@vexorawigs.com](mailto:hey@vexorawigs.com) if needed.

CAP SIZE	EXTRA SMALL	SMALL	MEDIUM	LARGE
Circumference	20"-20.5"	21.5"	22.5"	23.5"
Front to Nape	12"-12.5"	14"	14.5"	14.5"
Ear to Ear across Forehead	10"-10.5"	12"	12.5"	13"
Ear to Ear Over top	10.5"-11"	12.9"	13.3"	13.7"
Temple to Temple around Back	12.5"-13"	14"-14.5"	15"	15.5"
Nape of Neck	4"-4.5"	5"	5.5"	6"





**Wig Name:** AVERY

**Available Length:** 14" 15"

**Wig Color:** Cool Blonde Balayage with Brown Root

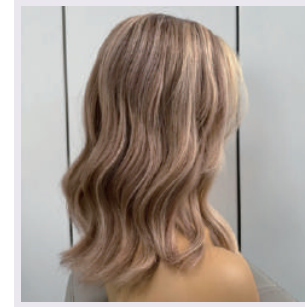
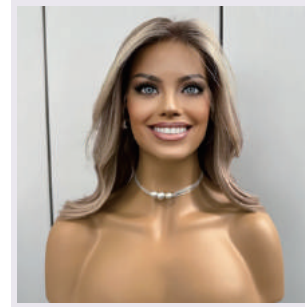
**Hair Material:** High quality remy human hair

**Density:** Medium Density approx 140% (Average density for wigs is anywhere from 130-140%)

**Cap Size:** Small Medium (Extra Small and Large Can Be Customized)

**Wave:** Can be curled and Straightened

**Durability:** 1-2 years with good care



**Wig Name:** CAROL

**Available Length:** 16"

**Wig Color:** Warm Blonde Hair With Highlights

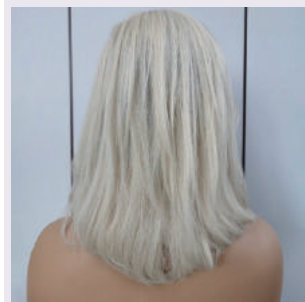
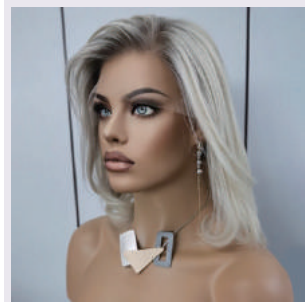
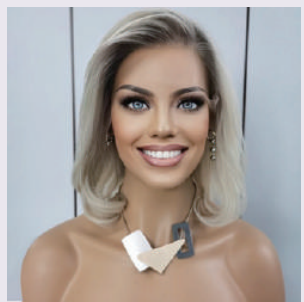
**Hair Material:** High quality remy human hair

**Density:** Medium Density approx 140% (Average density for wigs is anywhere from 130-140%)

**Cap Size:** Small Medium (Extra Small and Large Can Be Customized)

**Wave:** Can be curled and Straightened

**Durability:** 1-2 years with good care



**Wig Name:** CAMILA

**Available Length:** 14"

**Wig Color:** Icy Blonde Balayage with Brown Root

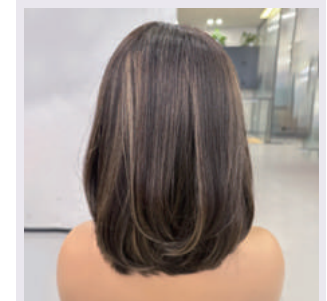
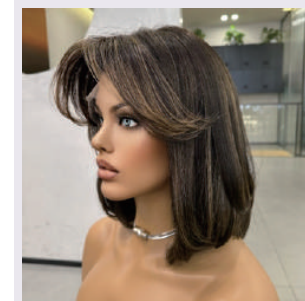
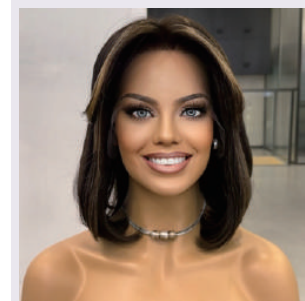
**Hair Material:** High quality remy human hair

**Density:** Medium Density approx 140% (Average density for wigs is anywhere from 130-140%)

**Cap Size:** Small Medium (Extra Small and Large Can Be Customized)

**Wave:** Can be curled and Straightened

**Durability:** 1-2 years with good care



**Wig Name:** CHLOE

**Available Length:** 14" 16" 18"

**Wig Color:** Honey Blonde Highlights On Dark Brown Hair

**Hair Material:** High quality remy human hair

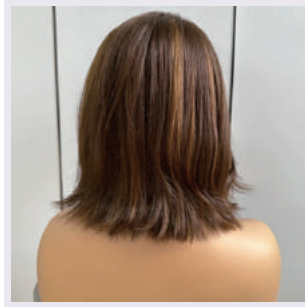
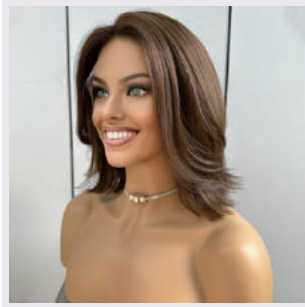
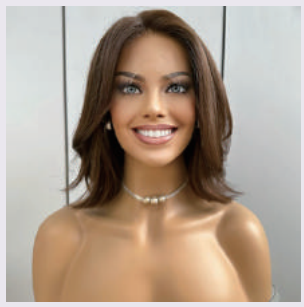
**Density:** Medium Density approx 140% (Average density for wigs is anywhere from 130-140%)

**Cap Size:** Small Medium (Extra Small and Large Can Be Customized)

**Wave:** Can be curled and Straightened

**Durability:** 1-2 years with good care





**Wig Name:** *CLAIRE*

**Available Length:** 14"

**Wig Color:** *Chocolate Brown Highlights (Level 5-6 Base)*

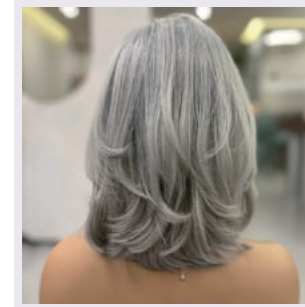
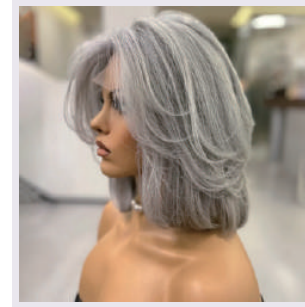
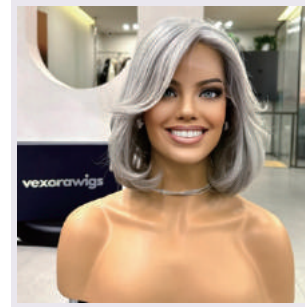
**Hair Material:** *High quality remy human hair*

**Density:** *Medium Density approx 145% (Average density for wigs is anywhere from 135-145%)*

**Cap Size:** *Small Medium (Extra Small and Large Can Be Customized)*

**Wave:** *Can be curled and Straightened*

**Durability:** *1-2 years with good care*



**Wig Name:** *COLETTE*

**Available Length:** 15"

**Wig Color:** *Natural Silver Salt and Light Pepper*

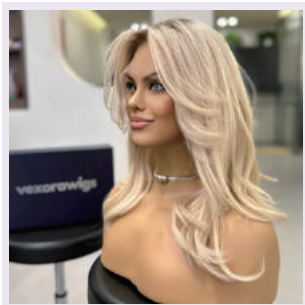
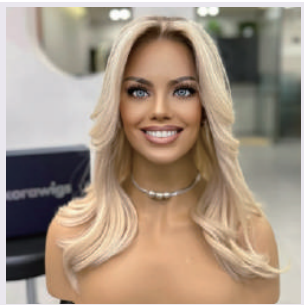
**Hair Material:** *High quality remy human hair*

**Density:** *Medium Density approx 140% (Average density for wigs is anywhere from 130-140%)*

**Cap Size:** *Small Medium (Extra Small and Large Can Be Customized)*

**Wave:** *Can be curled and Straightened*

**Durability:** *1-2 years with good care*



**Wig Name:** *CLORIS*

**Available Length:** 18" 20" 22"

**Wig Color:** *Light Neutral Cream Blonde with Light Neutral Root*

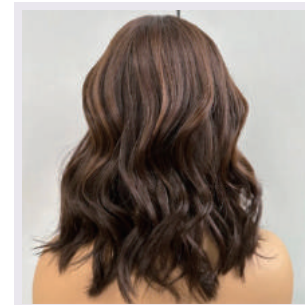
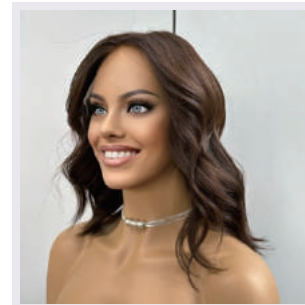
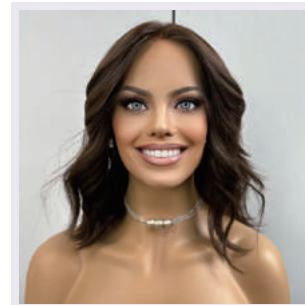
**Hair Material:** *High quality remy human hair*

**Density:** *Medium Density approx 145% (Average density for wigs is anywhere from 135-145%)*

**Cap Size:** *Small Medium (Extra Small and Large Can Be Customized)*

**Wave:** *Can be curled and Straightened*

**Durability:** *1-2 years with good care*



**Wig Name:** *DOREEN*

**Available Length:** 14"

**Wig Color:** *Natural Dimensional Dark Brown (Level 3-4 Base)*

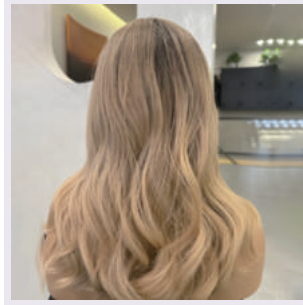
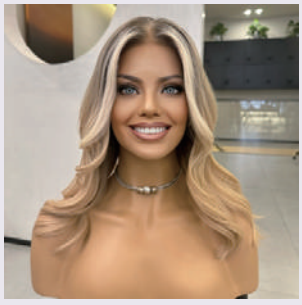
**Hair Material:** *High quality remy human hair*

**Density:** *Medium Density approx 135% (Average density for wigs is anywhere from 125-135%)*

**Cap Size:** *Small Medium (Extra Small and Large Can Be Customized)*

**Wave:** *Can be curled and Straightened*

**Durability:** *1-2 years with good care*



**Wig Name:** ELARA

**Available Length:** 18"

**Wig Color:** Highlights Cali Blonde

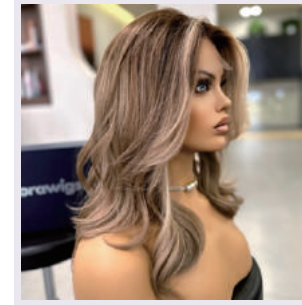
**Hair Material:** High quality remy human hair

**Density:** Medium Density approx 140%  
(Average density for wigs is anywhere from 130-140%)

**Cap Size:** Small Medium (Extra Small and Large Can Be Customized)

**Wave:** Can be curled and Straightened

**Durability:** 1-2 years with good care



**Wig Name:** FIORELLA

**Available Length:** 18"

**Wig Color:** Honey Blonde with Dramatic Money Piece Balayage

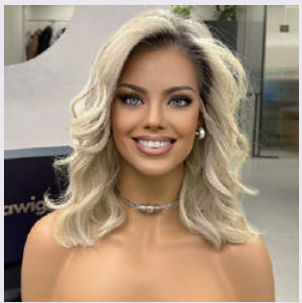
**Hair Material:** High quality remy human hair

**Density:** Medium Density approx 140%  
(Average density for wigs is anywhere from 130-140%)

**Cap Size:** Small Medium (Extra Small and Large Can Be Customized)

**Wave:** Can be curled and Straightened

**Durability:** 1-2 years with good care



**Wig Name:** ELISE

**Available Length:** 16"

**Wig Color:** Vanilla Cream Blonde Hair Color with Warm Coppery Brown Roots

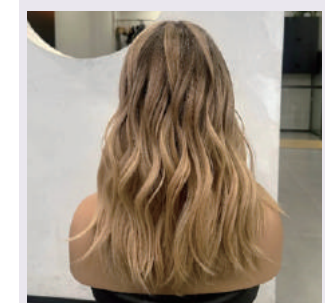
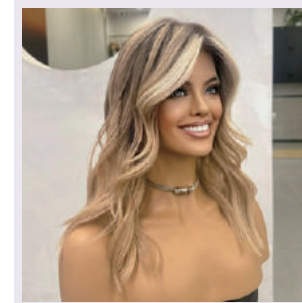
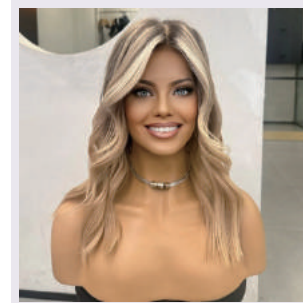
**Hair Material:** High quality remy human hair

**Density:** Medium Density approx 145%  
(Average density for wigs is anywhere from 135-145%)

**Cap Size:** Small Medium (Extra Small and Large Can Be Customized)

**Wave:** Can be curled and Straightened

**Durability:** 1-2 years with good care



**Wig Name:** GISELLE

**Available Length:** 18"

**Wig Color:** Baby Lights California Blonde

**Hair Material:** High quality remy human hair

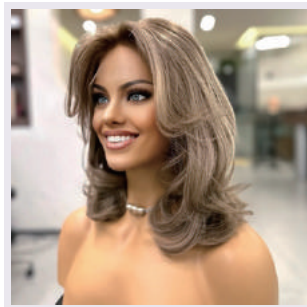
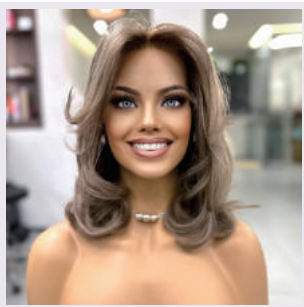
**Density:** Medium Density approx 140%  
(Average density for wigs is anywhere from 130-140%)

**Cap Size:** Small Medium (Extra Small and Large Can Be Customized)

**Wave:** Can be curled and Straightened

**Durability:** 1-2 years with good care





**Wig Name:** ISABELLA

**Available Length:** 16"

**Wig Color:** Two-Toned Dirty Blonde with Light Neutral Root

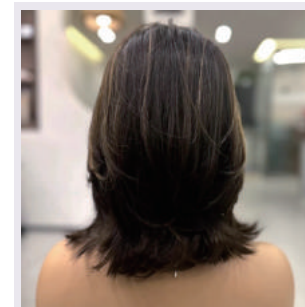
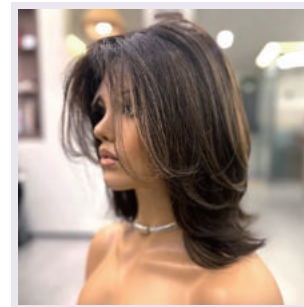
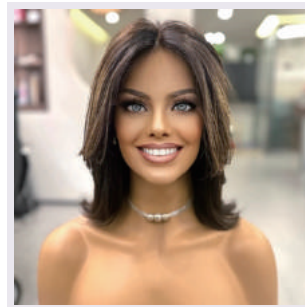
**Hair Material:** High quality remy human hair

**Density:** Medium Density approx 140% (Average density for wigs is anywhere from 130-140%)

**Cap Size:** Small Medium (Extra Small and Large Can Be Customized)

**Wave:** Can be curled and Straightened

**Durability:** 1-2 years with good care



**Wig Name:** KARINA

**Available Length:** 15"

**Wig Color:** Dark Brown with Highlights

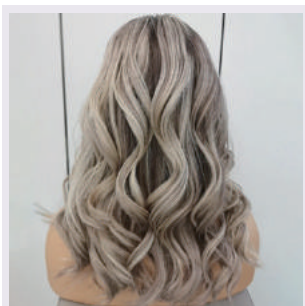
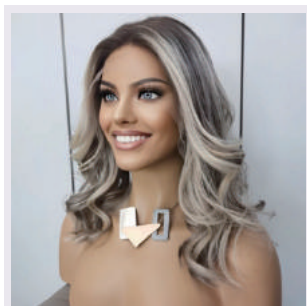
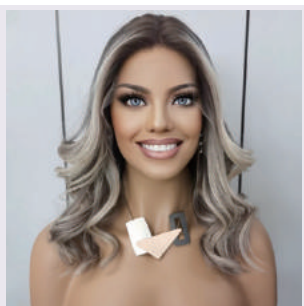
**Hair Material:** High quality remy human hair

**Density:** Medium Density approx 145% (Average density for wigs is anywhere from 135-145%)

**Cap Size:** Small Medium (Extra Small and Large Can Be Customized)

**Wave:** Can be curled and Straightened

**Durability:** 1-2 years with good care



**Wig Name:** JOYCE

**Available Length:** 18" 20" 22"

**Wig Color:** Light Sandy and Warm Blonde Balayage

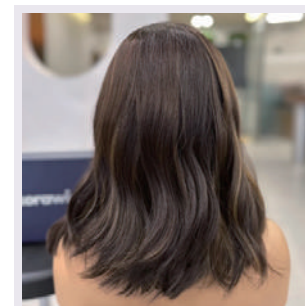
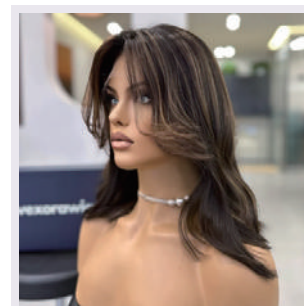
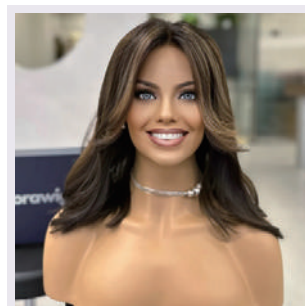
**Hair Material:** High quality remy human hair

**Density:** Medium Density approx 140% (Average density for wigs is anywhere from 130-140%)

**Cap Size:** Small Medium (Extra Small and Large Can Be Customized)

**Wave:** Can be curled and Straightened

**Durability:** 1-2 years with good care



**Wig Name:** LACIE

**Available Length:** 16"

**Wig Color:** Balayage Dark Brown Highlights

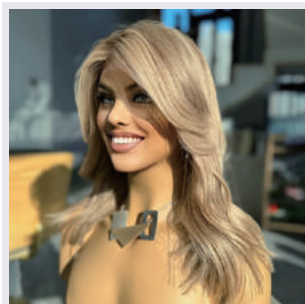
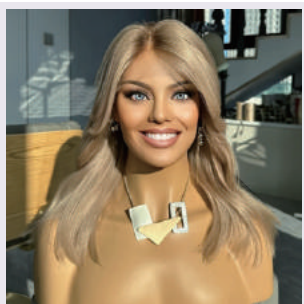
**Hair Material:** High quality remy human hair

**Density:** Medium Density approx 145% (Average density for wigs is anywhere from 135-145%)

**Cap Size:** Small Medium (Extra Small and Large Can Be Customized)

**Wave:** Can be curled and Straightened

**Durability:** 1-2 years with good care



**Wig Name:** *MAGGIE*

**Available Length:** 18" 20" 22"

**Wig Color:** *Creamy Blonde Balayage with Roots*

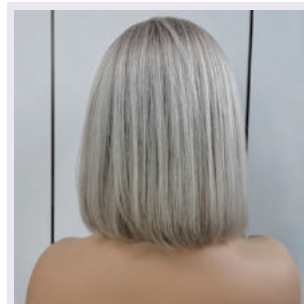
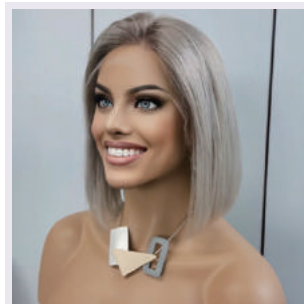
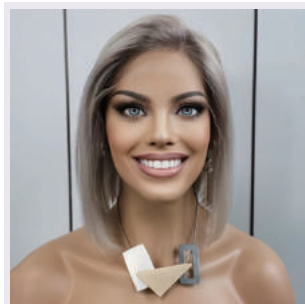
**Hair Material:** *High quality remy human hair*

**Density:** *Medium Density approx 140% (Average density for wigs is anywhere from 130-140%)*

**Cap Size:** *Small Medium (Extra Small and Large Can Be Customized)*

**Wave:** *Can be curled and Straightened*

**Durability:** *1-2 years with good care*



**Wig Name:** *NADIA*

**Available Length:** 14"

**Wig Color:** *Medium ice blonde with light neutral root*

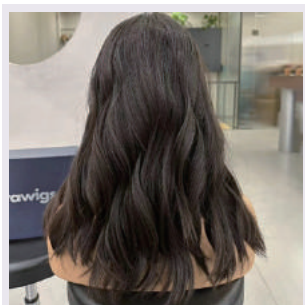
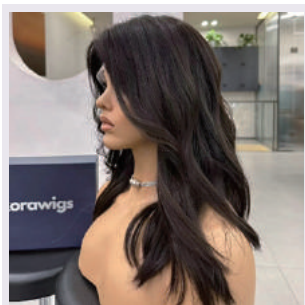
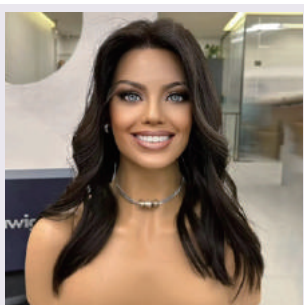
**Hair Material:** *High quality remy human hair*

**Density:** *Medium Density approx 140% (Average density for wigs is anywhere from 130-140%)*

**Cap Size:** *Small Medium (Extra Small and Large Can Be Customized)*

**Wave:** *Can be curled and Straightened*

**Durability:** *1-2 years with good care*



**Wig Name:** *MARTA*

**Available Length:** 14" 16" 18" 20" 22"

**Wig Color:** *Natural Black*

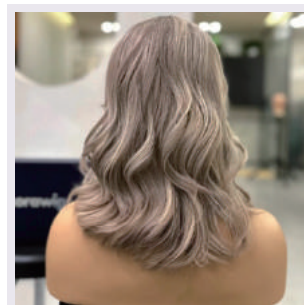
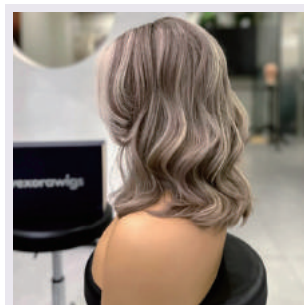
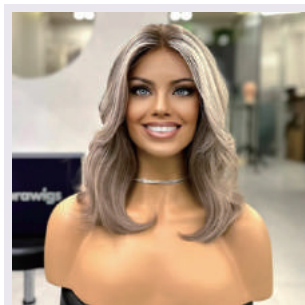
**Hair Material:** *High quality remy human hair*

**Density:** *Medium Density approx 145% (Average density for wigs is anywhere from 140-145%)*

**Cap Size:** *Small Medium (Extra Small and Large Can Be Customized)*

**Wave:** *Can be curled and Straightened*

**Durability:** *1-2 years with good care*



**Wig Name:** *SARAH*

**Available Length:** 16" 18" 20" 22"

**Wig Color:** *Neutral Blonde Balayage*

**Hair Material:** *High quality remy human hair*

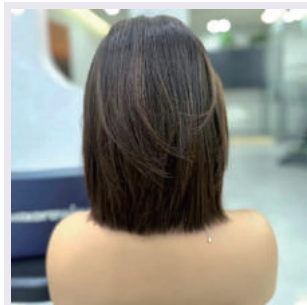
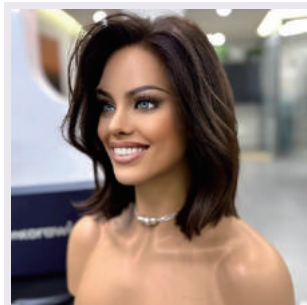
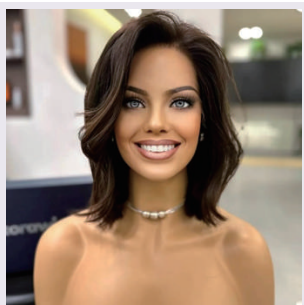
**Density:** *Medium Density approx 145% (Average density for wigs is anywhere from 135-145%)*

**Cap Size:** *Small Medium (Extra Small and Large Can Be Customized)*

**Wave:** *Can be curled and Straightened*

**Durability:** *1-2 years with good care*





**Wig Name:** SEVIM

**Available Length:** 14"

**Wig Color:** *Chocolate Gradient Brunette Lob Layers with Highlights*

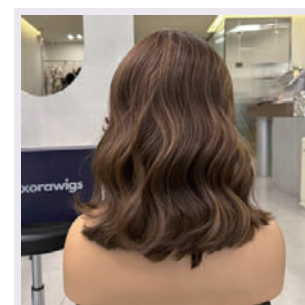
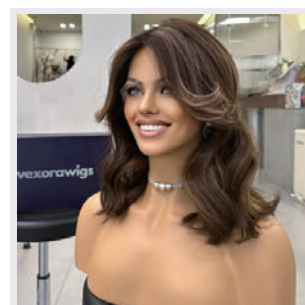
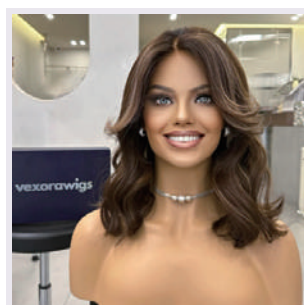
**Hair Material:** *High quality remy human hair*

**Density:** *Medium Density approx 140% (Average density for wigs is anywhere from 130-140%)*

**Cap Size:** *Small Medium (Extra Small and Large Can Be Customized)*

**Wave:** *Can be curled and Straightened*

**Durability:** *1-2 years with good care*



**Wig Name:** SYLVIA

**Available Length:** 16"

**Wig Color:** *Natural Brown Subtle Highlights with Natural Dark Brown Root*

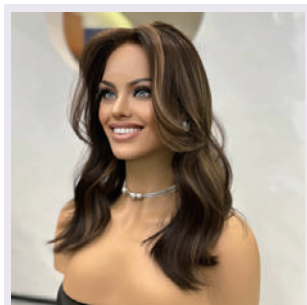
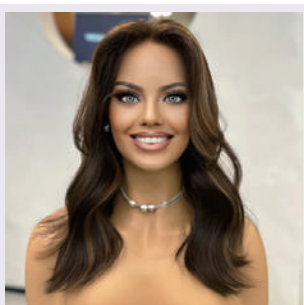
**Hair Material:** *High quality remy human hair*

**Density:** *Medium Density approx 140% (Average density for wigs is anywhere from 130-140%)*

**Cap Size:** *Small Medium (Extra Small and Large Can Be Customized)*

**Wave:** *Can be curled and Straightened*

**Durability:** *1-2 years with good care*



**Wig Name:** SHARON

**Available Length:** 14" 16" 18"

**Wig Color:** *Brown Brunette Highlights Balayage*

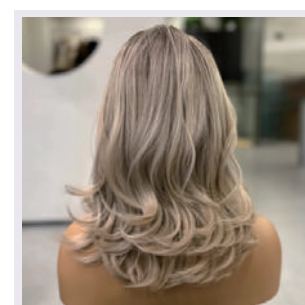
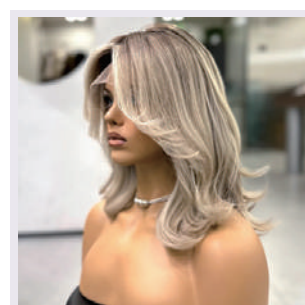
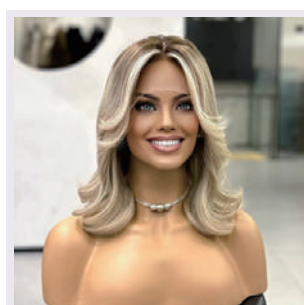
**Hair Material:** *High quality remy human hair*

**Density:** *Medium Density approx 145% (Average density for wigs is anywhere from 140-145%)*

**Cap Size:** *Small Medium (Extra Small and Large Can Be Customized)*

**Wave:** *Can be curled and Straightened*

**Durability:** *1-2 years with good care*



**Wig Name:** TAYLOR

**Available Length:** 16"

**Wig Color:** *Ombre Creamy Blonde Balayage*

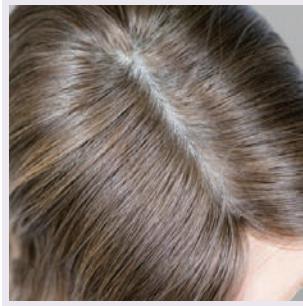
**Hair Material:** *High quality remy human hair*

**Density:** *Medium Density approx 140% (Average density for wigs is anywhere from 130-140%)*

**Cap Size:** *Small Medium (Extra Small and Large Can Be Customized)*

**Wave:** *Can be curled and Straightened*

**Durability:** *1-2 years with good care*



**Topper Name:** SHERRY

**Available Length:** 16" 18" 20"

**Topper Color:** Light Caramel Blonde Balayage

**Hair Material:** High quality remy human hair

**Density:** Medium Density approx 125% (Average density for toppers is anywhere from 120-125%)

**Cap Size:** 6\*6 / 7\*7 / 8\*8 / 9\*9 / 10\*10 Base

**Wave:** Can be curled and Straightened

**Durability:** 1-2 years with good care



**Topper Name:** DEBBY

**Available Length:** 16" 18" 20"

**Topper Color:** Natural Dimensional Darkest Brown (Level 4)

**Hair Material:** High quality remy human hair

**Density:** Medium Density approx 125% (Average density for toppers is anywhere from 120-125%)

**Cap Size:** 6\*6 / 7\*7 / 8\*8 / 9\*9 / 10\*10 Base

**Wave:** Can be curled and Straightened

**Durability:** 1-2 years with good care



**Topper Name:** EDITH

**Available Length:** 16" 18" 20"

**Topper Color:** Dimensional Natural Toned "Dark Bronde" with a Medium Brown

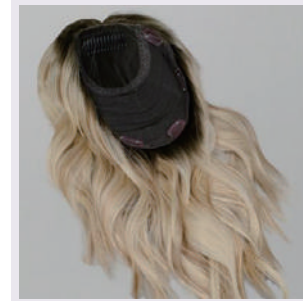
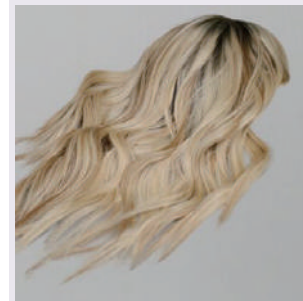
**Hair Material:** High quality remy human hair

**Density:** Medium Density approx 125% (Average density for toppers is anywhere from 120-125%)

**Cap Size:** 6\*6 / 7\*7 / 8\*8 / 9\*9 / 10\*10 Base

**Wave:** Can be curled and Straightened

**Durability:** 1-2 years with good care



**Topper Name:** CARLIN

**Available Length:** 16" 18" 20"

**Topper Color:** Blonde Balayage with Rooted Medium Chestnut Brown

**Hair Material:** High quality remy human hair

**Density:** Medium Density approx 125% (Average density for toppers is anywhere from 120-125%)

**Cap Size:** 6\*6 / 7\*7 / 8\*8 / 9\*9 / 10\*10 Base

**Wave:** Can be curled and Straightened

**Durability:** 1-2 years with good care





**Topper Name:** LIANE

**Available Length:** 16" 18" 20"

**Topper Color:** Light Blonde with Light Neutral Root

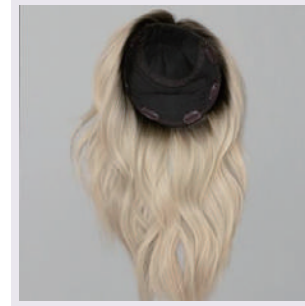
**Hair Material:** High quality remy human hair

**Density:** Medium Density approx 125% (Average density for toppers is anywhere from 120-125%)

**Cap Size:** 6\*6 / 7\*7 / 8\*8 / 9\*9 / 10\*10 Base

**Wave:** Can be curled and Straightened

**Durability:** 1-2 years with good care



**Topper Name:** ISABEL

**Available Length:** 16" 18" 20"

**Topper Color:** Neutral to ash toned Dark Blonde (Level 6-7) Root

**Hair Material:** High quality remy human hair

**Density:** Medium Density approx 125% (Average density for toppers is anywhere from 120-125%)

**Cap Size:** 6\*6 / 7\*7 / 8\*8 / 9\*9 / 10\*10 Base

**Wave:** Can be curled and Straightened

**Durability:** 1-2 years with good care



**Topper Name:** JESSICA

**Available Length:** 16" 18" 20"

**Topper Color:** Mocha Bronde Balayage

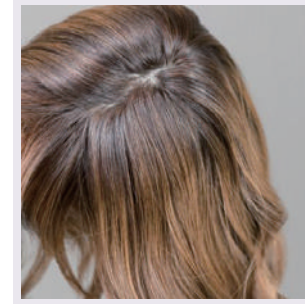
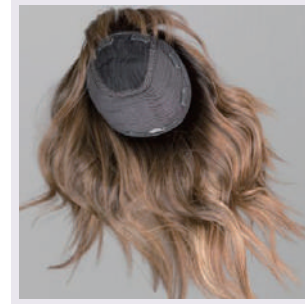
**Hair Material:** High quality remy human hair

**Density:** Medium Density approx 125% (Average density for toppers is anywhere from 120-125%)

**Cap Size:** 6\*6 / 7\*7 / 8\*8 / 9\*9 / 10\*10 Base

**Wave:** Can be curled and Straightened

**Durability:** 1-2 years with good care



**Topper Name:** CARMEN

**Available Length:** 17"

**Topper Color:** Dark Brown Rooted Melting to Auburn Brown with Copper Balayage

**Hair Material:** High quality remy human hair

**Density:** Medium Density approx 125% (Average density for toppers is anywhere from 120-125%)

**Cap Size:** 6\*6 / 7\*7 / 8\*8 / 9\*9 / 10\*10 Base

**Wave:** Can be curled and Straightened

**Durability:** 1-2 years with good care



**Topper Name:** ATHENA

**Available Length:** 16" 18" 20"

**Topper Color:** *Natural Dimensional Dark Brown (Level 4-5 Base)*

**Hair Material:** *High quality remy human hair*

**Density:** *Medium Density approx 125% (Average density for toppers is anywhere from 120-125%)*

**Cap Size:** 6\*6 / 7\*7 / 8\*8 / 9\*9 / 10\*10 Base

**Wave:** *Can be curled and Straightened*

**Durability:** *1-2 years with good care*



**Topper Name:** CALLIOPE

**Available Length:** 16" 18" 20"

**Topper Color:** *Natural Dimensional Dark Brown (Level 4 Root and Base) with both Blonde & Caramel Balayage*

**Hair Material:** *High quality remy human hair*

**Density:** *Medium Density approx 125% (Average density for toppers is anywhere from 120-125%)*

**Cap Size:** 6\*6 / 7\*7 / 8\*8 / 9\*9 / 10\*10 Base

**Wave:** *Can be curled and Straightened*

**Durability:** *1-2 years with good care*



WIG  
CAP  
DESIGN



## Lace Top Wig Cap Design



This cap typically includes a lace top and an elastic wig cap to ensure softness and comfort against the skin. The lace top facilitates scalp breathability, enhancing comfort and minimizing heat buildup, particularly suitable for hot climates. However, the lace portion is delicate and prone to damage, such as tearing or harming the lace grid, necessitating careful handling and maintenance.

## Silk Top Wig Cap Design



This wig cap design features a seamless silk lining and luxurious velvet integrated into the lace top wig, effortlessly achieving a flawless, undetectable transition from the silk liner to the scalp. This enhancement elevates the wig's natural allure to a whole new level. Additionally, a removable silk liner is included to protect the knots at the top of the lace. Should you prefer, the liner can be effortlessly detached, converting the wig into a velvet lace variant. What's more, there's no need for glue or tape to secure the wig in place.

## Medical Grade Silk Top Wig Cap Design



This medical-grade silicone wig cap is ideal for individuals experiencing total or partial hair loss, such as alopecia. Crafted with comfort in mind, this wig boasts a breathable silk top that is gentle on the skin, making it particularly suitable for sensitive scalps. Strategically positioned medical-grade silicone panels are incorporated throughout the cap, including at the front, sides, and back, ensuring a secure fit without the need for any glue or adhesive tape.

PROFESSIONAL HAIRSTYLIST  
COLORING







## OUR PRODUCTS



We utilize high-quality European hair, renowned for its ability to achieve a flawless natural look that is softer and smoother. All of our products undergo dyeing in the brand's owned salons, resulting in superior dyeing effects and increased durability.



Before dyeing, we confirm the desired color and assess the hair's quality through washing and care. This helps determine the suitable dye. We then test a small strand to ensure compatibility and effectiveness. Upon success, we apply the chosen color to the entire head. This method minimizes hair damage and boosts success chances, reflecting our commitment to customer satisfaction despite the time investment.

We utilize high-quality European hair, renowned for its ability to achieve a flawless natural look that is softer and smoother. All of our products undergo dyeing in the brand's owned salons, resulting in superior dyeing effects and increased durability.



Once dyeing is complete, we'll wash the wig again and apply a final color-fixing treatment for long-lasting color stability. This meticulous care ensures customers receive a product with vibrant color that won't fade easily, prolonging its lifespan and winning their satisfaction.







© 2024, VexoraWigs



### Step 1: Gather Your Supplies

Before you begin, gather all the necessary supplies: Wig brush or wide-tooth comb, Mild shampoo formulated for human hair, Moisturizing conditioner, Cold water, Wig stand or mannequin head, Towel.

### Step 2: Detangle the Wig

Start by gently detangling the wig using a wig brush or wide-tooth comb. Begin at the ends and work your way up to the roots, being careful not to pull or tug on the hair.



### Step 3: Prepare the Washing Solution

Fill a basin or sink with cold water and add a small amount of mild shampoo. Swirl the water to create suds and ensure the shampoo is evenly distributed.





### Step 4: Wash the Wig

Submerge the wig in the shampoo solution and gently agitate it with your fingers. Pay particular attention to the cap and hairline, where dirt and oils tend to accumulate. Avoid rubbing or twisting the hair, as this can cause tangling and damage.

### Step 5: Rinse Thoroughly

Once the wig is clean, rinse it thoroughly under cold running water. Continue rinsing until all the shampoo is removed, and the water runs clear.



### Step 6: Condition the Wig

Apply a generous amount of moisturizing conditioner to the wig, focusing on the mid-lengths and ends. Avoid applying conditioner to the roots or cap, as this can weigh down the hair and cause it to become greasy. Leave the conditioner on for a few minutes to penetrate the hair shaft, then rinse it out with cold water.



### Step 8: Style as Desired

Once the wig is dry, style it as desired using heat styling tools or products formulated for human hair. Avoid using high heat settings on the wig to prevent damage, and always use a heatprotectant spray before heat styling.



### Step 7: Pat Dry

Gently pat the wig with a towel to remove excess water. Avoid wringing or squeezing the wig, as this can damage the hair fibers. Place the wig on a wig stand or mannequin head to air dry completely.



To keep your human hair wig looking great and feeling soft, wash and maintain it regularly. Follow these steps and make caring for your wig part of your routine to maintain its natural shine and longevity. Treat it well, and you'll enjoy versatile styling options and confidence in your appearance for years to come.





Leane was diagnosed with ovarian cancer in 2017, at the age of 49. The disease caused her premature death on Tuesday 5th September. She was only 55 years of age.

She became a fierce advocate, spreading the message that ovarian cancer needed greater community focus to grow public awareness and to channel funds into research that would change the outlook for women like her. The White Shirt Campaign was the ideal platform for Leane to share this message. It was the perfect marriage of her love of fashion and the opportunity to use her voice for change. Leane became one of the primary faces of the campaign over the past 5 years.

"Honestly, me of all people should have better perspective than to worry about all these irrelevant things! So I made the decision to close my eyes and truly be in the moment, to stop overthinking everything, and to just enjoy. I think this is something we all need to do more often." Leane said.

She told us that adopting such an attitude can be beneficial for reducing stress, enhancing happiness, and promoting mental well-being. We should prioritize focusing on what we can control in the present moment rather than excessively worrying about things that haven't happened yet.





**JESS**

I'm Jess, your wig wearing, champagne drinking, Bravo TV obsessed, side part and skinny jean wearing, telogen effluvium and androgenetic alopecia hair loss BFF. When my hair loss was at its worst, I spent many a late night jumping head first into the rabbit hole of Google searches using every iteration of "why is my hair falling out." I so desperately wanted to find something, anything, that made me feel just a little bit better, that made me feel not so alone. But all I found was information on hair loss causes and treatments, or sites selling some sort of magic potion (onion juice seemed to be a popular one). Oh, and of course I should mention that wigs are completely awesome and amazing. They're kind of my thing.



**Olivia McVeigh**

She commented on our Sharon wig: "Wow!! That's my fav wig so far!! Very rich!"

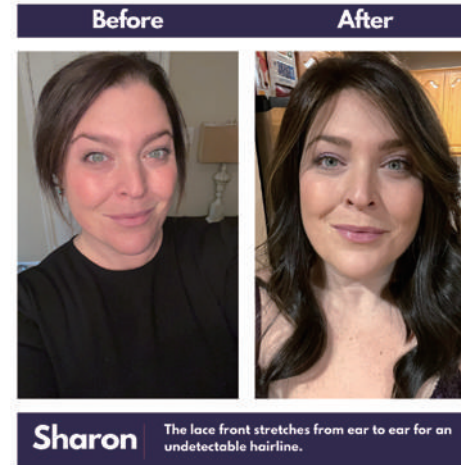
"Losing my hair was one of the most life changing experiences for me & having Androgenic Alopecia is a constant journey, but a journey that has shaped me for the better. I love my hair and that I get to wear different wigs everyday, the silver lining of my condition sharing that part of me online has helped me discover women in a similar situation to me that are so inspiring."



**Mel Boersma**

She commented on our Colette wig: "It's beautiful! The cap fits like a glove. It is simple the best I've ever worn!" @mesbeageless shares her journey of hair loss and resilience. At 39, her hair melted off after a salon visit, revealing underlying health issues including fibroid tumors and Crohn's disease. Despite a bleak prognosis, she defied odds and continues thriving 17 years later. Hair loss led her to rely on extensions and wigs, intensified by a battle with COVID-19. Creating a YouTube channel, she empowers others to embrace wigs and regain confidence.

"Getting replies and messages or hearing from others their hair journey and how I help in sharing mine, makes the effort a joy and my mission." Mel said. Her mission is fueled by positive impact on others' hair journeys, reminding them they're not alone.

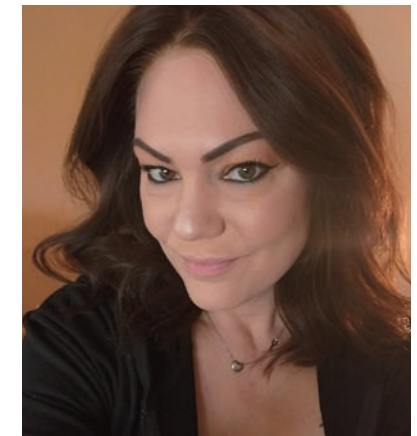


"The hair quality is excellent, I had trimmed a bit in the front to blend the curtain bangs, the color is gorgeous, can't wait to buy another piece!"

----Erica

"I am so pleased with my vexora wig!! Emma was amazing with her communication and honored my request for a picture and video of my wig before it was shipped. The knots are beautifully bleached, the hairline is perfection and the hair is sooooo soft!!! Highly recommend!!!"

----Jessica M.



## Frequently Questions & Answers

### Q: Can wigs or toppers be dyed again?

A: Our premium human hair wigs and toppers can be dyed like natural hair, but caution is needed to avoid damage. While some products are pre-colored, we advise against further dyeing. For best results, consult a skilled professional or use our hairstylists for coloring.

### Q: How long will a wig or topper last?

A: Our wigs and toppers feature top-quality remy human hair, ensuring smooth and healthy strands with the cuticle aligned in one direction. With proper care, they can last 1 to 2 years or even longer. Use suitable hair care products, limit heat styling, and avoid damaging the lace to prolong their lifespan.

### Q: Do you offer hair care or hair repair services?

A: At Vexoraiwgs, we aim to meet our customers' diverse needs with a range of tailored services for wigs and toppers. These services provide ongoing support post-purchase, exclusively for Vexoraiwgs products. Visit [www.vexorawigs.com](http://www.vexorawigs.com) or reach out [hey@vexorawigs.com](mailto:hey@vexorawigs.com) for more details.

### Q: Is Shedding Normal?

A: Yes, Just like with your natural hair, shedding is completely normal and should be expected even with wigs. Overtime hair will shed with wear, washing, styling and day to day activities. Bleached knots will speed this up.

### Q: How Do I Cut The Lace?

A: We recommend you use a smaller pair of scissors to cut your lace for precision and accuracy.

1. Begin by using some clips and clipping all the hair away from the lace. This prevents you from accidentally cutting any hair.
2. Slowly trim around the hairline, starting at one ear and finishing at the other.
3. Aim to leave about 1/4 - 1/2 inch of lace beyond the hairline. If you cut directly to the hairline, you may find you have issues with the lace sitting flat against your forehead.
4. Once you've made your cuts, try the wig on and see how it looks. From there, you can choose to cut more if necessary.

### Q: What Are Return Hairs?

A: Return hairs are shorter strands of hair resulting from hand-tied techniques used to knot the hair to the base of your cap. These hairs are completely normal and are not the same as damaged "split" or "broken" ends. These short hairs are easily concealed with light plucking, heat styling. You can also use hair spray, wax spray or pomade to lay them down.

### Q: Can human hair wigs be styled with heat tools?

A: Generally, low-temperature heat tools such as curling irons or straighteners can be used to style real human hair wigs, but caution is advised to avoid using high-temperature tools to prevent damaging the hair strands.

### Q: Can human hair wigs be trimmed?

A: Real hair wigs can be trimmed to suit different hairstyle needs, but it's recommended to have it done by a professional hairstylist to ensure a natural-looking result after trimming.

### Q: How to choose the right wig for yourself?

A: When selecting a human hair wig, consider factors such as your hairstyle, head circumference, desired length, and color. It's best to choose a product that meets your personal needs and is of reliable quality.

### Q: Can human hair wigs be worn for long periods?

A: Wearing human hair wigs for extended periods may cause discomfort to the scalp. Therefore, it's recommended to remove the wig daily to allow the scalp to breathe and to avoid wearing it continuously for more than 8 hours.



# **vexorawigs**

**Wigvest In Your Style**

**Vexorawigs is dedicated to inspiring people to discover the endless possibilities in life because we believe that every step is a starting point towards success.**

**Let's always hold onto our dreams, forge ahead, and create a future full of vitality and hope together! Together, let's seize every opportunity, embrace every moment, and unlock the extraordinary together with Vexorawigs.**

**Life is an adventure, let's make it remarkable!**

**[www.vexorawigs.com](http://www.vexorawigs.com)**