

ochain

OCHAIN active spider:
elastomers and limit switch replacement*



Elastomers replacement

Elastomers play an important role in OCHAIN and they need to be replaced every 150 hours of use on your mtb in order to preserve the product and to keep high standards of performance.

Pedal kickback is measured in degrees, indicating how much the pedals rotate backwards at a given point in the suspension travel.

OCHAIN comes with a ready to ride 6° setup and two alternative setup kits.

Tailor your OCHAIN settings by changing provided OCHAIN elastomers: 4°, 6° and 9°. If you wish to try 12° setup, you will find the 12° Kit on our online store. Refer to our website or to your local bike shop for detailed setup suggestions and for extra replacement kits.

Warranty is guaranteed only if this service is provided.

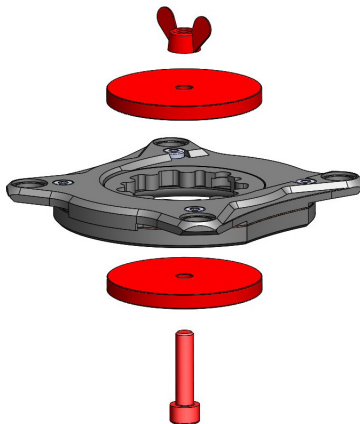
Disassemble your crankset, always referring to the manufacturer's manual or to a professional bicycle mechanic. Remove OCHAIN from the crank arm.

For a quick elastomers replacement is possible to do this work without removing the chainring from OCHAIN.

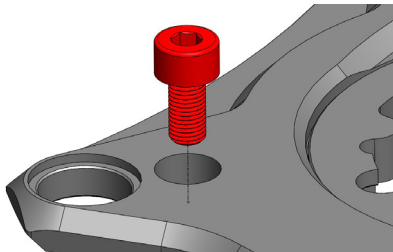
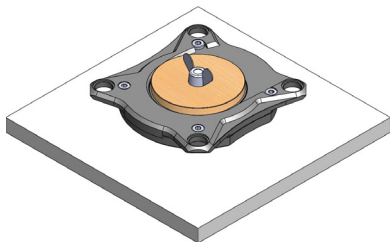
Clean OCHAIN perfectly from dust and mud with a clean cloth.

NOTE: Please do not use any chemical products to preserve our environment.

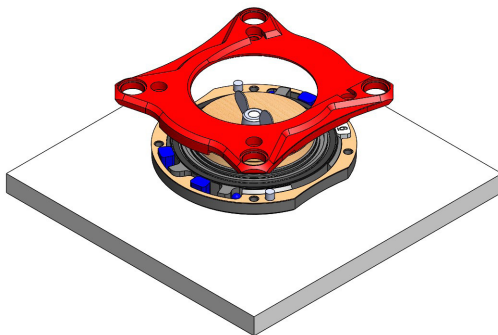
Mount and tighten the elastomers replacement tool included in the packaging.



Place OCHAIN on a clean working flat and stable surface.
Unscrew all four m4x8 mm bolts using a 2.5 mm hex wrench.



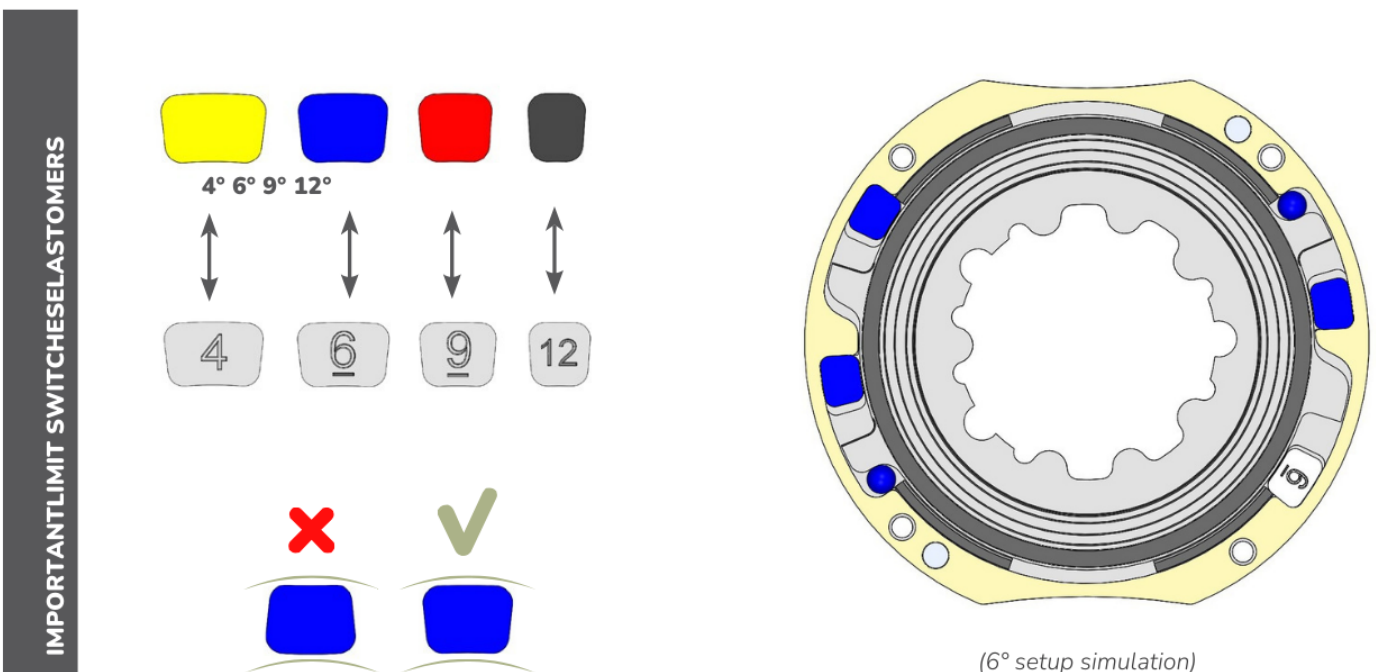
Lift and remove the OCHAIN upper element.



Every time you open OCHAIN take the opportunity to wipe it with a clean cloth from eventual dirt and old grease, then regrease with commercial lithium grease as shown on maintenance video on OCHAIN Youtube channel.

Once you chose your setup remove the used elastomers and limit switch and save them for later taking note of the amount of hours on service or dispose them if they are exhausted.

Place the exact limit switch according to lasered mark “end stroke” then position all three elastomers from the chosen kit on the right side as shown.



Close OCHAIN referring to lasered alignment marks “>>>”

IMPORTANT: Check OCHAIN is perfectly closed.

Use Loctite medium on bolts. Tighten all four m4x8 mm bolts with 4Nm using a 2,5 mm hex wrench. Align OCHAIN with your crank arm. Lasered mark signs “>>>” on OCHAIN surface show the correct crank arm positioning.

Finally re-assemble your crank referring to the manufacturer’s manual or to a professional bicycle mechanic.

** you can find the video instructions at www.ochain.bike/service*