



**Certificate of Analysis**  
Compliance Test

Client Information:

**GETHEMPD**  
1799 ISABEL RD OESTE  
BOCA RATON, FL 33486

Batch # GH.3.8.23.D8Dist  
Batch Date: 2023-03-08  
Extracted From: Hemp

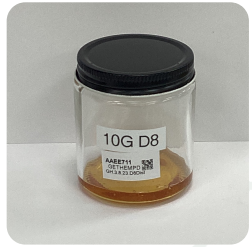
Test Reg State: Florida

Order # GET230308-020001  
Order Date: 2023-03-08  
Sample # AAEE711

Sampling Date: 2023-03-09  
Lab Batch Date: 2023-03-09  
Completion Date: 2023-03-14

Initial Gross Weight: 133.300 g  
Net Weight: 10.297 g

Number of Units: 1  
Net Weight per Unit: 10297.000 mg  
Sampling Method: MSP 7.3.1



Product Image

**Potency Tested** **Heavy Metals Passed** **2,3-Butanedione Passed** **Mycotoxins Passed** **Pesticides Passed**  
**Residual Solvents Passed** **Pathogenic Microbiology Passed** **Listeria Monocytogenes Passed** **Vitamin E Passed**

**Delta 8/Delta 10 Potency 13 - (LCUV)** **Tested**  
SOP13.052 (LCUV)

Specimen Weight: 56.200 mg

Analyte	LOD (%)	LOQ (%)	Result (mg/g)	(%)
Delta-8 THC	2.60E-5	0.0015	891.530	89.153
CBC	1.80E-5	0.0015	<LOQ	<LOQ
CBD	5.40E-5	0.0015	<LOQ	<LOQ
CBDa	1.00E-5	0.0015	<LOQ	<LOQ
CBDV	6.50E-5	0.0015	<LOQ	<LOQ
CBG	2.48E-4	0.0015	<LOQ	<LOQ
CBGA	8.00E-5	0.0015	<LOQ	<LOQ
CBN	1.40E-5	0.0015	<LOQ	<LOQ
Delta-10 THC	3.00E-6	0.0015	<LOQ	<LOQ
Delta-9 THC	1.30E-5	0.1	<LOQ	<LOQ
Delta6a10a-THC	8.47E-5	0.0015	<LOQ	<LOQ
THCA-A	3.20E-5	0.0015	<LOQ	<LOQ
THCV	7.00E-6	0.0015	<LOQ	<LOQ
Total Active CBD			<LOQ	<LOQ
Total Active THC			<LOQ	<LOQ

**Potency Summary**

<b>Total Delta 8</b> 89.153%	9,180.080	-	<b>Total Delta 10</b> None Detected
<b>Total Active THC</b> None Detected	-	-	<b>Total Active CBD</b> None Detected
<b>Total CBG</b> None Detected	-	-	<b>Total CBN</b> None Detected
<b>Other Cannabinoids</b> None Detected	-	-	<b>Total Cannabinoids</b> 89.153% 9,180.080

**Mycotoxins**  
Specimen Weight: 263.600 mg

Dilution Factor: 5.690

Analyte	LOD (ppb)	LOQ (ppb)	Action Level (ppb)	Result (ppb)	Analyte	LOD (ppb)	LOQ (ppb)	Action Level (ppb)	Result (ppb)
Aflatoxin B1	3.0400E-1	6	20	<LOQ	Aflatoxin G2	2.7100E-1	6	20	<LOQ
Aflatoxin B2	7.7000E-2	6	20	<LOQ	Ochratoxin A	7.5400E-1	3.8	20	<LOQ
Aflatoxin G1	3.0400E-1	6	20	<LOQ					

**Passed** **Pathogenic Microbiology SAE (MicroArray)**  
SOP13.007 (LCMS)

Specimen Weight: 1018.920 mg

Dilution Factor: 1.000

Analyte	Result (cfu/g)	Analyte	Result (cfu/g)
Aspergillus flavus	Absence in 1g	Aspergillus terreus	Absence in 1g
Aspergillus fumigatus	Absence in 1g	Salmonella	Absence in 1g
Aspergillus niger	Absence in 1g	STEC E. Coli	Absence in 1g

*Aixia Sun*  
Aixia Sun Lab Director/Principal Scientist  
D.H.Sc., M.Sc., B.Sc., MT (AAB)

Definitions and Abbreviations used in this report: Total Active CBD = CBD + (CBD-A \* 0.877), \*Total CBDV = CBDV + (CBDVA \* 0.87), Total Active THC = THCA-A \* 0.877 + Delta 9 THC, Total THC = THCV + (THCVA \* 0.87), CBG Total = (CBGA \* 0.877) + CBG, CBN Total = (CBNA \* 0.877) + CBN, Total CBC = CBC + (CBCA \* 0.877), Total THC-O-Acetate = Delta 8 THC-O-Acetate + Delta 9 THC-O-Acetate, Total THCP = Delta8-THCP + Delta9-THCP, Other Cannabinoids Total = Total Cannabinoids - All the listed cannabinoids on the summary section, Total Detected Cannabinoids = Delta6a10a-THC + Delta8-THC + Total CBN + CBT + CBE + Delta8-THCV + Total CBG + Total CBD + Total THCV + CBL + Total THC + Total CBC + Total CBDV + Delta10-THC + Total THC-O-Acetate + Total THCP. (mg/ml) = Milligrams per Milliliter, LOQ = Limit of Quantitation, LOD = Limit of Detection, Dilution = Dilution Factor (ppb) = Parts per Billion, (%) = Percent, (cfu/g) = Colony Forming Unit per Gram (cfu/g) = Colony Forming Unit per Gram, , LOD = Limit of Detection, (µg/g) = Microgram per Gram (ppm) = Parts per Million, (ppm) = (µg/g), (aw) = aw (area ratio) = Area Ratio, (mg/Kg) = Milligram per Kilogram, Passed - Analyte/microbe is non-detected or at the level below the action limit, Failed - Analyte/microbe is at the level that equal or above the action limit, \*Measurement of Uncertainty = +/- 10%

This report shall not be reproduced, without written approval, from ACS Laboratory. The results of this report relate only to the material or product analyzed. Test results are confidential unless explicitly waived otherwise. ACS Laboratory is accredited to the ISO/IEC 17025:2017 Standard.





**Certificate of Analysis**  
Compliance Test

Client Information:

**GETHEMPD**  
1799 ISABEL RD OESTE  
BOCA RATON, FL 33486

Batch # GH.3.8.23.D8Dist  
Batch Date: 2023-03-08  
Extracted From: Hemp

Test Reg State: Florida

Order # GET230308-02001  
Order Date: 2023-03-08  
Sample # AAEE711

Sampling Date: 2023-03-09  
Lab Batch Date: 2023-03-09  
Completion Date: 2023-03-14

Initial Gross Weight: 133.300 g  
Net Weight: 10.297 g

Number of Units: 1  
Net Weight per Unit: 10297.000 mg  
Sampling Method: MSP 7.3.1

**Pesticides**  
Net Weight: 10.297 g

Dilution Factor: 5.690

Analyte	LOD (ppb)	LOQ (ppb)	Action Level (ppb)	Result (ppb)	Analyte	LOD (ppb)	LOQ (ppb)	Action Level (ppb)	Result (ppb)
Abamectin	2.8800E-1	28.23	100	<LOQ	Fludioxonil	1.7400E+0	48	100	<LOQ
Acephate	2.3000E-2	30	100	<LOQ	Hexythiazox	4.9000E-2	30	100	<LOQ
Acequinocyl	9.5640E+0	48	100	<LOQ	Imazalil	2.4800E-1	30	100	<LOQ
Acetamiprid	5.2000E-2	30	100	<LOQ	Imidacloprid	9.4000E-2	30	400	<LOQ
Aldicarb	2.6000E-2	30	100	<LOQ	Kresoxim Methyl	4.2000E-2	30	100	<LOQ
Azoxystrobin	8.1000E-2	10	100	<LOQ	Malathion	8.2000E-2	30	200	<LOQ
Bifenazate	1.4150E+0	30	100	<LOQ	Metalaxyl	8.1000E-2	10	100	<LOQ
Bifenthrin	4.3000E-2	30	100	<LOQ	Methiocarb	3.2000E-2	30	100	<LOQ
Boscalid	5.5000E-2	10	100	<LOQ	Methomyl	2.2000E-2	30	100	<LOQ
Captan	6.1200E+0	30	700	<LOQ	methyl-Parathion	1.7100E+0	10	100	<LOQ
Carbaryl	2.2000E-2	10	500	<LOQ	Mevinphos	2.1500E+0	10	100	<LOQ
Carbofuran	3.4000E-2	10	100	<LOQ	Myclobutanil	1.0290E+0	30	100	<LOQ
Chlorantraniliprole	3.3000E-2	10	1000	<LOQ	Naled	9.5000E-2	30	250	<LOQ
Chlordane	1.0000E+1	10	100	<LOQ	Oxamyl	2.5000E-2	30	500	<LOQ
Chlorfenapyr	3.4000E-2	30	100	<LOQ	Pacllobutrazol	6.5000E-2	30	100	<LOQ
Chloromequat Chloride	1.0800E-1	10	1000	<LOQ	Pentachloronitrobenzene	1.3200E+0	10	150	<LOQ
Chlorpyrifos	3.5000E-2	30	100	<LOQ	Permethrin	3.4300E-1	30	100	<LOQ
Clofentezine	1.1900E-1	30	200	<LOQ	Phosmet	8.2000E-2	30	100	<LOQ
Coumaphos	3.7700E+0	48	100	<LOQ	Piperonylbutoxide	2.9000E-2	30	3000	<LOQ
Cyfluthrin	3.1100E+0	30	500	<LOQ	Prallethrin	7.9800E-1	30	100	<LOQ
Cypermethrin	1.4490E+0	30	500	<LOQ	Propiconazole	7.0000E-2	30	100	<LOQ
Daminozide	8.8500E-1	30	100	<LOQ	Propoxur	4.6000E-2	30	100	<LOQ
Diazinon	4.4000E-2	30	100	<LOQ	Pyrethrins	2.3593E+1	30	500	<LOQ
Dichlorvos	2.1820E+0	30	100	<LOQ	Pyridaben	3.2000E-2	30	200	<LOQ
Dimethoate	2.1000E-2	30	100	<LOQ	Spinetoram	8.0000E-2	10	200	<LOQ
Dimethomorph	5.8300E+0	48	200	<LOQ	Spinosad	8.8000E-2	30	100	<LOQ
Ethoprophos	3.6000E-1	30	100	<LOQ	Spiromesifen	2.6100E-1	30	100	<LOQ
Etofenprox	1.1600E-1	30	100	<LOQ	Spirotetramat	8.9000E-2	30	100	<LOQ
Etoxazole	9.5000E-2	30	100	<LOQ	Spiroxamine	1.3100E-1	30	100	<LOQ
Fenhexamid	5.1000E-1	10	100	<LOQ	Tebuconazole	6.7000E-2	30	100	<LOQ
Fenoxycarb	1.0700E-1	30	100	<LOQ	Thiacloprid	6.4000E-2	30	100	<LOQ
Fenpyroximate	1.3800E-1	30	100	<LOQ	Thiamethoxam	5.0000E-2	30	500	<LOQ
Fipronil	1.0700E-1	30	100	<LOQ	Trifloxystrobin	3.7000E-2	30	100	<LOQ
Fonicamid	5.1700E-1	30	100	<LOQ					

**Passed**  
SOP13.007  
(LCMS/GCMS)

**2,3-butanedione(Diacetyl)**  
Specimen Weight: 300.000 mg

Dilution Factor: 50.000

Analyte	LOD (ppm)	LOQ (ppm)	Result (ppm)
2,3-Butanedione	.024	0.024	<LOQ

**Listeria Monocytogenes**  
Specimen Weight: 1015.000 mg

Dilution Factor: 1.000

Analyte	Action Level (cfu/g)	Result
Listeria Monocytogenes	1	Absence in 1g

**Vitamin E (Tocopheryl Acetate)**  
Specimen Weight: 263.600 mg

Dilution Factor: 5.690

Analyte	LOD (ppb)	Result (ppb)
Tocopheryl Acetate (Vitamin E Acetate)	.705	<LOQ

*Aixia Sun*  
Aixia Sun Lab Director/Principal Scientist  
D.H.Sc., M.Sc., B.Sc., MT (AAB)

Definitions and Abbreviations used in this report: Total Active CBD = CBD + (CBD-A \* 0.877), \*Total CBDV = CBDV + (CBDVA \* 0.87), Total Active THC = THCA-A \* 0.877 + Delta 9 THC, Total THC = THCV + (THCVA \* 0.87), CBG Total = (CBGA \* 0.877) + CBG, CBN Total = (CBNA \* 0.877) + CBN, Total CBC = CBC + (CBCA \* 0.877), Total THC-O-Acetate = Delta 8 THC-O-Acetate + Delta 9 THC-O-Acetate, Total THCP = Delta8-THCP + Delta9-THCP, Other Cannabinoids Total = Total Cannabinoids - All the listed cannabinoids on the summary section, Total Detected Cannabinoids = Delta6a10a-THC + Delta8-THC + Total CBN + CBT + CBE + Delta8-THCV + Total CBG + Total CBD + Total THCV + CBL + Total THC + Total CBC + Total CBDV + Delta10-THC + Total THC-O-Acetate + Total THCP. (mg/ml) = Milligrams per Milliliter, LOQ = Limit of Quantitation, LOD = Limit of Detection, Dilution = Dilution Factor (ppb) = Parts per Billion, (%) = Percent, (cfu/g) = Colony Forming Unit per Gram (cfu/g) = Colony Forming Unit per Gram, , LOD = Limit of Detection, (µg/g) = Microgram per Gram (ppm) = Parts per Million, (µg/g) = (µg/g), (aw) = aw (area ratio) = Area Ratio, (mg/Kg) = Milligram per Kilogram, Passed - Analyte/microbe is non-detected or at the level below the action limit, Failed - Analyte/microbe is at the level that equal or above the action limit, \*Measurement of Uncertainty = +/- 10%

This report shall not be reproduced, without written approval, from ACS Laboratory. The results of this report relate only to the material or product analyzed. Test results are confidential unless explicitly waived otherwise. ACS Laboratory is accredited to the ISO/IEC 17025:2017 Standard.





**Certificate of Analysis**  
Compliance Test

Client Information:

**GETHEMPD**  
1799 ISABEL RD OESTE  
BOCA RATON, FL 33486

Batch # GH.3.8.23.D8Dist  
Batch Date: 2023-03-08  
Extracted From: Hemp

Test Reg State: Florida

Order # GET230308-020001  
Order Date: 2023-03-08  
Sample # AAEE711

Sampling Date: 2023-03-09  
Lab Batch Date: 2023-03-09  
Completion Date: 2023-03-14

Initial Gross Weight: 133.300 g  
Net Weight: 10.297 g

Number of Units: 1  
Net Weight per Unit: 10297.000 mg  
Sampling Method: MSP 7.3.1

**Residual Solvents - FL (CBD)**  
Specimen Weight: 300.000 mg

**Passed**  
SOP13.039 (GCMS)

Dilution Factor: 50.000

Analyte	LOD (ppm)	LOQ (ppm)	Action Level (ppm)	Result (ppm)	Analyte	LOD (ppm)	LOQ (ppm)	Action Level (ppm)	Result (ppm)
1,1-Dichloroethene	0.0094	0.16	8	<LOQ	Heptane	0.0013	1.39	5000	<LOQ
1,2-Dichloroethane	0.0003	0.04	5	<LOQ	Hexane	0.068	1.17	290	<LOQ
Acetone	0.015	2.08	5000	<LOQ	Isopropyl alcohol	0.0048	1.39	500	<LOQ
Acetonitrile	0.06	1.17	410	<LOQ	Methanol	0.0005	0.69	3000	<LOQ
Benzene	0.0002	0.02	2	<LOQ	Methylene chloride	0.0029	2.43	600	<LOQ
Butanes	0.4167	2.5	2000	<LOQ	Pentane	0.037	2.08	5000	<LOQ
Chloroform	0.0001	0.04	60	<LOQ	Propane	0.031	5.83	2100	<LOQ
Ethanol	0.0021	2.78	5000	<LOQ	Toluene	0.0009	2.92	890	<LOQ
Ethyl Acetate	0.0012	1.11	5000	<LOQ	Total Xylenes	0.0001	2.92	2170	<LOQ
Ethyl Ether	0.0049	1.39	5000	<LOQ	Trichloroethylene	0.0014	0.49	80	<LOQ
Ethylene Oxide	0.0038	0.1	5	<LOQ					

**Heavy Metals**  
Specimen Weight: 246.600 mg

**Passed**  
SOP13.048 (ICP-MS)

Dilution Factor: 202

Analyte	LOD (ppb)	LOQ (ppb)	Action Level (ppb)	Result (ppb)	Analyte	LOD (ppb)	LOQ (ppb)	Action Level (ppb)	Result (ppb)
Arsenic (As)	4.83	100	1500	<LOQ	Lead (Pb)	11.76	100	500	<LOQ
Cadmium (Cd)	.64	100	500	<LOQ	Mercury (Hg)	.58	100	3000	<LOQ

*Aixia Sun*  
Aixia Sun Lab Director/Principal Scientist  
D.H.Sc., M.Sc., B.Sc., MT (AAB)



Definitions and Abbreviations used in this report: Total Active CBD = CBD + (CBD-A \* 0.877), \*Total CBDV = CBDV + (CBDVA \* 0.87), Total Active THC = THCA-A \* 0.877 + Delta 9 THC, Total THC = THC + (THCVA \* 0.87), CBG Total = (CBGA \* 0.877) + CBG, CBN Total = (CBNA \* 0.877) + CBN, Total CBC = CBC + (CBCA \* 0.877), Total THC-O-Acetate = Delta 8 THC-O-Acetate + Delta 9 THC-O-Acetate, Total THCP = Delta8-THCP + Delta9-THCP, Other Cannabinoids Total = Total Cannabinoids - All the listed cannabinoids on the summary section, Total Detected Cannabinoids = Delta6a10a-THC + Delta8-THC + Total CBN + CBT + CBE + Delta8-THCV + Total CBG + Total CBD + Total THC + Total CBC + Total CBDV + Delta10-THC + Total THC-O-Acetate + Total THCP. (mg/ml) = Milligrams per Milliliter, LOQ = Limit of Quantitation, LOD = Limit of Detection, Dilution = Dilution Factor (ppb) = Parts per Billion, (%) = Percent, (cfu/g) = Colony Forming Unit per Gram (cfu/g) = Colony Forming Unit per Gram, , LOD = Limit of Detection, (µg/g) = Microgram per Gram (ppm) = Parts per Million, (ppm) = (µg/g), (aw) = aw (area ratio) = Area Ratio, (mg/Kg) = Milligram per Kilogram, Passed - Analyte/microbe is non-detected or at the level below the action limit, Failed - Analyte/microbe is at the level that equal or above the action limit, \*Measurement of Uncertainty = +/- 10%

This report shall not be reproduced, without written approval, from ACS Laboratory. The results of this report relate only to the material or product analyzed. Test results are confidential unless explicitly waived otherwise. ACS Laboratory is accredited to the ISO/IEC 17025:2017 Standard.