

---

## Chocolates

Seasonal and guest chocolates are stocked in addition to our year-round chocolate collection below. Our chocolates are prepared and packed in an environment where ALLERGENS are present, therefore, our loose chocolates may contain traces of these allergens even if they are not listed specifically as an ingredient.

Cross contaminants: NUTS, SESAME, GLUTEN, EGG, SOYA, MILK, SULPHITES

---

## Butter Creams

Fresh cream is blended with cocoa butter resulting in a truly indulgent tasting chocolate. Cocoa Butter is a costly ingredient and some manufacturers will substitute with less expensive vegetable oils and fats in place of cocoa butter.



### White Raspberry

( Contains: Milk Soya | <1% Alcohol )

A zingy raspberry butter cream in decorated white chocolate



### Raspberry Bombe

( Contains: Milk Soya )

An indulgent raspberry infused butter cream in white chocolate (V)



### Strawberry Cream

( Contains: Milk Soya )

Real strawberry fruit & butter cream in dark chocolate (V)

---

## Ganaches

Real cream melted with chocolate forming a wonderfully smooth and velvety texture, which is then blended with other ingredients to flavour. A good ganache should be slightly firm to the bite, melting in the mouth.



### Apricot Ganache

( Contains: Milk Soya | <1% Alcohol )

White chocolate apricot ganache filling in white chocolate (V)



### Dark Salted Caramel Ganache

( Contains: Milk Soya )

Salted caramel ganache in dark chocolate (V)



### Lemon Yogurt Ganache

( Contains: Gluten Milk Soya | <1% Alcohol )

Lemon yoghurt ganache in white chocolate (V)



## Milk Salted Caramel Ganache

( Contains: Milk Soya )

Sea salted caramel ganache  
in milk chocolate (V)



## Coffee Ganache

( Contains: Gluten Milk Soya )

A smooth milk chocolate  
coffee-infused ganache cup in  
milk & white chocolate (V)



## Cherry Ganache

( Contains: Milk Soya )

Cherry pulp (no stone) in a  
smooth ganache in  
dark chocolate

## Raspberry Ganache

( Contains: Milk Soya )

Intense raspberry ganache  
with fruit décor in  
dark chocolate (V)



## Irish Cream Ganache

( Contains: Milk Soya | Alcohol )

Irish Cream liqueur  
infused ganache in  
milk chocolate (V)



## Advocaat Ganache

( Contains: Egg Milk Soya | Alcohol )

Brandy & vanilla cream centre in  
dark chocolate (V)

## Rum & Raisin Barrel

( Contains: Milk Soya | Alcohol )

Fine Rum and raisin  
ganache  
in milk chocolate (V)



## Pear Ganache

( Contains: Milk Soya )

Pear syrup  
infused ganache  
in milk chocolate (V)

---

# Caramels

A popular selection of milk, dark and white chocolate all filled with gooey, soft caramel centres.

---



## Dark Salted Caramel

( Contains: Milk Soya | <1% Alcohol )

Exquisite soft salted caramel  
with gold sugar décor in  
dark chocolate (V)



## Marbled Heart Caramel

( Contains: Milk Soya | <1% Alcohol )

Soft caramel in marbled  
white chocolate (V)



## Boat Caramel

( Contains: Milk Soya | <1% Alcohol )

Soft caramel in  
milk chocolate (V)

### Artist's Palette Caramel

( Contains: Milk Soya | <1% Alcohol )

Soft caramel in  
dark chocolate (V)

### Toffee Caramel

( Contains: Milk Soya | <1% Alcohol )

Soft buttery caramel in  
white chocolate (V)

## Fondants

These chocolates have a flavoured fondant cream centre. Stroop fondants have more of a syrup or slightly runny consistency.



### Cherry Liqueur

( Contains: Milk Soya | Alcohol )

Liqueur syrup &  
whole fruit (no stone) in  
dark chocolate (V)



### Orange Cream Fondant

( Contains: Milk Soya )

Orange fondant with  
a striped decor in  
dark chocolate (V)



### Dark Mint Fondant

( Contains: Milk Soya )

Mint flavour stroop fondant in  
dark chocolate (V)



### Coffee Cream Fondant



### Dark Mint Cream Fondant



### Violet Cream Fondant

### Artist's Palette Caramel

( Contains: Milk Soya | <1% Alcohol )

Soft caramel in  
dark chocolate (V)

### Toffee Caramel

( Contains: Milk Soya | <1% Alcohol )

Soft buttery caramel in  
white chocolate (V)

## Fondants

These chocolates have a flavoured fondant cream centre. Stroop fondants have more of a syrup or slightly runny consistency.



### Cherry Liqueur

( Contains: Milk Soya | Alcohol )

Liqueur syrup & whole fruit (no stone) in dark chocolate (V)



### Orange Cream Fondant

( Contains: Milk Soya )

Orange fondant with a striped decor in dark chocolate (V)



### Dark Mint Fondant

( Contains: Milk Soya )

Mint flavour stroop fondant in dark chocolate (V)



### Coffee Cream Fondant

( Contains: Soya )

A solid chocolate bean on a coffee infused fondant in dark chocolate



### Dark Mint Cream Fondant

( Contains: Milk Soya )

Fluffy peppermint fondant in dark chocolate (V)



### Violet Cream Fondant

( Contains: Soya )

Petal topped violet fondant cream in dark chocolate

### Rose Cream Fondant

( Contains: Soya )

Petal topped rose fondant cream in dark chocolate

### Royal Vanilla Fondant

( Contains: Milk Soya )

Goosey vanilla crème in milk chocolate (V)

## Marzipans

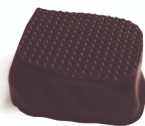
The key to a good marzipan is all down to a high nut content without the vegetable oils and synthetic flavourings you will find in low grade marzipan.



### Champagne Marzipan

( Contains: Milk Nuts Soya | Alcohol )

Marzipan with Champagne in a thick dark chocolate casing finished in a thin layer of white chocolate (V)



### Ginger Marzipan

( Contains: Nuts Soya Sulphites )

Marzipan with ginger in dark chocolate (Ve)



### Kaneel (Spiced) Marzipan

( Contains: Milk Nuts Soya )

Marzipan with nutmeg and cinnamon spices in milk chocolate (V)







### Marzipan Strawberry

( Contains: Nuts )

Pure ground almonds sprinkled with a sugar décor



### Coffee Marzipan

( Contains: Milk Nuts Soya )

Coffee infused marzipan in milk chocolate



### Orange Marzipan

( Contains: Milk Nuts Soya )

Marzipan with orange in dark chocolate (Ve)



### Almond Marzipan

( Contains: Nuts Soya )

Whole almond on marzipan in dark chocolate (V)



### Pistachio Marzipan

( Contains: Milk Nuts Soya )

Pistachio marzipan dipped in dark chocolate (V)

## Pralines & Giandujas

Praline...a comforting blend of chocolate, hazelnuts and sugar ground into a smooth consistency. Gianduja...(Gi-an-doo-ha) is praline but with extra cocoa for an ultra smooth taste.



### Nougatine

( Contains: Gluten Milk Nuts Soya )

Praline subtly infused with nougatine pieces in milk chocolate (V)



### Red Heart Praline

( Contains: Milk Nuts Soya | <1% Alcohol )

A milk chocolate praline centre in decorated white chocolate



### Coconut Praline

( Contains: Milk Nuts Soya )

A smooth coconut infused milk chocolate praline milk chocolate (V)



### Fleur Brasil Praline

( Contains: Milk Nuts Soya )

A whole hazelnut suspended in smooth praline in milk chocolate (V)



### Dark Heart Praline

( Contains: Milk Nuts Soya )

A smooth milk chocolate praline centre in dark chocolate (V)



### Seashell Praline

( Contains: Milk Nuts Soya )

A smooth milk chocolate praline centre in marbled white or milk chocolate (V)





### Almond Praline

( Contains: Milk Nuts Soya )

A smooth milk chocolate



### White Swan Praline

( Contains: Milk Nuts Soya )

A smooth milk chocolate



### Milk Amaretti Praline

( Contains: Gluten Milk Nuts Soya )

A smooth gianduia topped with



### Champagne Truffle (Dark)

( Contains: Milk Soya | Alcohol )

Marc de Champagne infused dark chocolate ganache in white chocolate (V)



### Lemon Cheesecake Truffle

( Contains: Milk Soya )

Lemon cheesecake flavoured white ganache centre in white chocolate (V)



### Praline Truffle

( Contains: Milk Nuts Soya )

Smooth hazelnut praline truffle in milk chocolate (V)



### Pink Gin Truffle

( Contains: Milk Soya | Alcohol )

Pink gin infused white chocolate ganache in white chocolate (V)



### Champagne Truffle (Milk)

( Contains: Milk Soya | Alcohol )

Marc de Champagne infused milk chocolate ganache in white chocolate (V)



### Raspberry & Champagne Truffle

( Contains: Milk Soya | Alcohol )

Marc de Champagne & raspberry infused white chocolate ganache in white chocolate (V)



### Strawberry & Champagne Truffle

( Contains: Milk Soya | Alcohol )

Marc de Champagne & strawberry infused white chocolate ganache in white chocolate



### Rum Truffle (Dark)

( Contains: Milk Soya | Alcohol )

Rum infused dark chocolate ganache in dark chocolate (V)



### Rum Truffle (Milk)

( Contains: Milk Soya | Alcohol )

Rum infused milk chocolate ganache in flaked milk chocolate (V)



### Baileys Truffle

( Contains: Milk Soya | Alcohol )

Baileys Irish Cream infused  
milk chocolate ganache in  
white chocolate (V)



### Whisky Truffle

( Contains: Milk Soya | Alcohol )

Whisky infused  
milk chocolate ganache in  
milk chocolate (V)



### Amaretto Truffle

( Contains: Milk Nuts Soya | Alcohol )

Almond liqueur infused  
dark chocolate ganache  
rolled in flaked almonds (V)



### Vanilla Truffle

( Contains: Milk Soya | <1% Alcohol )

Vanilla & white chocolate ganache in  
white chocolate (V)



### Sea Salt & Caramel Truffle

( Contains: Milk Soya )

Mildly runny, sea salted caramel in  
a cocoa dusted  
milk chocolate (V)



### Dark Chocolate Truffle

( Contains: Milk Soya | <1% Alcohol )

A dark ganache in  
dark chocolate (72%) (V)

### Caramel Truffle

( Contains: Milk Soya )

Soft caramel in sugar-rolled  
milk chocolate (V)

### Milk Chocolate Truffle

( Contains: Milk Soya | <1% Alcohol )

A milk ganache in  
milk chocolate (34%) (V)

## Speciality / Others



### Dark Fig

( Contains: Soya )

Dried whole fig in  
Belgian dark chocolate (V)



### Dipped Orange Slice

( Contains: Soya Sulphites )

Sweet orange slices  
half-dipped in  
Belgian dark chocolate (Ve)



### Dark Cerisette

( Contains: Milk Soya | Alcohol )

Whole cherry (with stone)  
in brandy liqueur  
enrobed in  
Belgian dark chocolate (V)



### Belgian Florentines /



## Belgian Florentines /

### Mendiants

( Contains: Milk Nuts Soya Sulphites )

Milk, dark or white chocolate topped  
with mixed fruit & nuts **(V)**

### Orangettes

( Contains: Soya Sulphites )

Sweet candied orange peel batons  
enrobed in  
milk **(V)** or dark **(Ve)** chocolate

### Dark Ginger

( Contains: Soya Sulphites )

Succulent ginger pieces  
covered in Belgian  
dark chocolate **(Ve)**