



<http://support.optimumtime.co.uk/ot3servicekit>

The OS3 / OE3 Battery Replacement Kit contains everything you could need to easily change your watch battery.

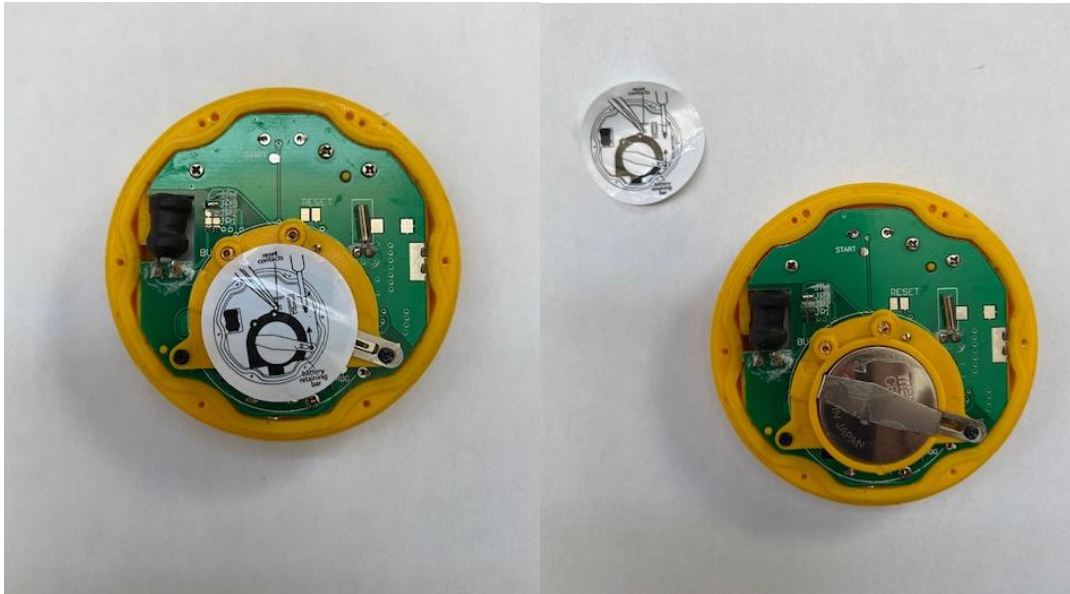
Battery, screwdriver, rubber seal, silicone gel, tweezers, spare screws

Instructions to replace your battery and rubber seal

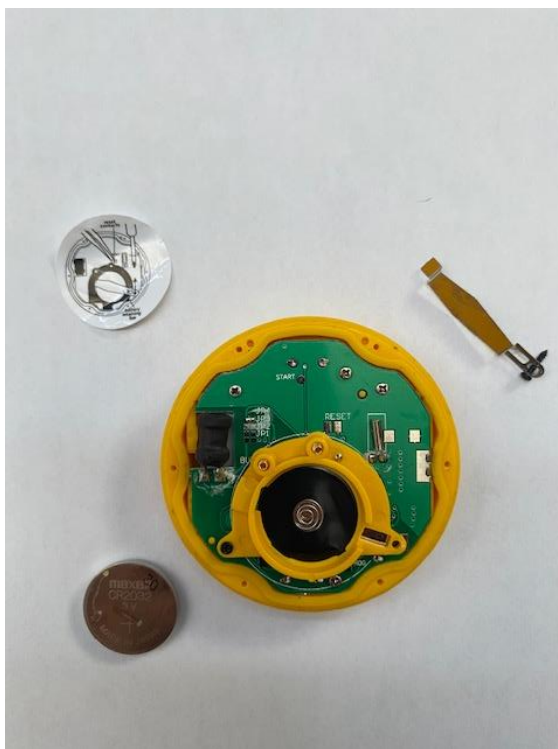
1. Remove the screws from the back of the watch using the screwdriver supplied and carefully take off the back of the watch case.



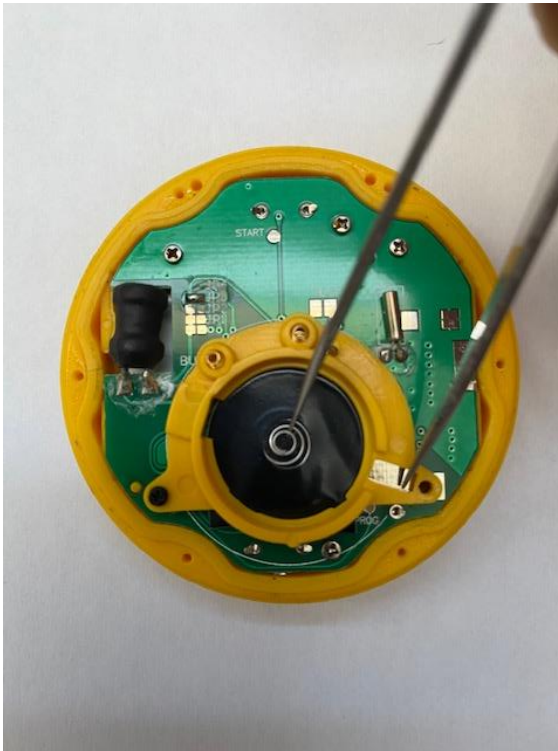
2. Carefully remove the battery contact sticker from on top of the battery using the tweezers and save to replace later.



3. Loosen the battery retaining bar and remove the old battery



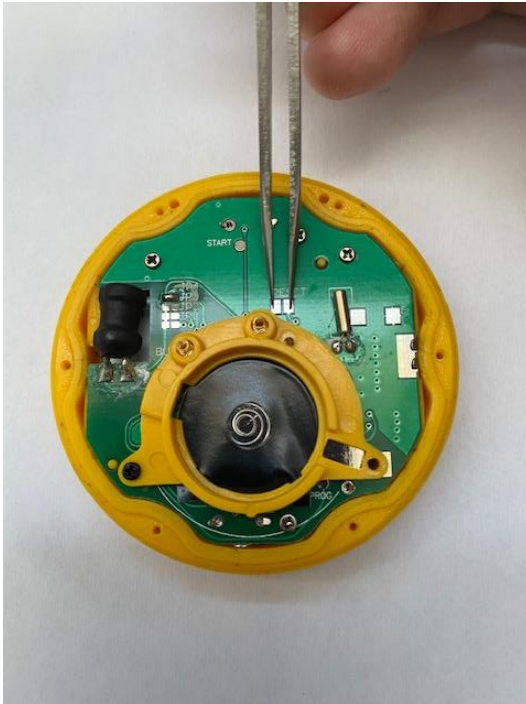
4. Important Discharge any remaining current from the watch. Do this by using the tweezers supplied, place one leg of the tweezers where the battery coil is sited and the other on the battery housing below the battery arm (see photo).



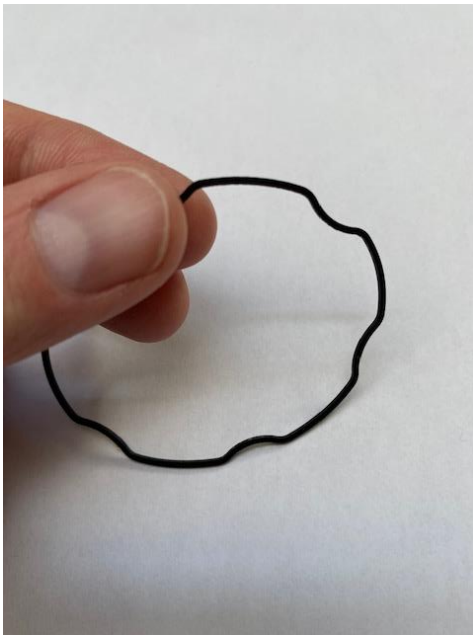
5. Insert the new battery with the positive side / text side facing up. Handle the new battery as little as possible, holding it on the sides. If necessary, wipe with a soft cloth



6. Replace the battery retaining arm.
7. Important Replace the battery contact sticker to ensure the watch operates correctly.
8. Reset the watch. Using the tweezers touch the two contact points at the reset point. Your watch display will reset to 12.00 (see below how to reset your time)



9. Prior to replacing the back case inspect the rubber seal ensuring the seal sits comfortably in its groove with no cracks or signs of perishing and replace if necessary. If you need, or wish, to replace the rubber seal put some silicone gel on your fingers and pull the new rubber seal through your fingers, ensuring the seal is lightly coated. Carefully replace the rubber seal in its groove with the tweezers, ensuring it's correctly fitted in its groove.



10. Replace the back case ensuring the cover is aligned appropriately. Ensure that the 'TOP' marked on the back aligns with the Stop / Start button on the front.



11. Carefully replace the screws

To reset to the correct time

1. Hold CLEAR for 3 seconds
2. Hour will flash, press MIN button to set correct hour.
3. Press MODE to confirm the hour and minutes will then flash
4. Press MIN button to set correct minutes.
5. Press CLEAR button to confirm