

Learning About Mast Ancestry Through DNA



Mennonite and Amish Immigrants to Pennsylvania

423 members

[JOIN](#)

Darvin L Martin

Aug 3, 2019

Mast Reunion, Morgantown, PA

<https://www.familytreedna.com/groups/mennoniteand-amish-immigrants/about/background>



Mennonite and Amish Immigrants to Pennsylvania

423 members

JOIN

Darvin L Martin

March 30, 2019

Lancaster Family History Conference

Purpose: To determine specific DNA signatures (both yDNA and mtDNA) emphasizing the families of 17th and 18th century Mennonite and Amish families to Pennsylvania, some of whom later migrated west across the United States and Canada. These families are predominately from Swiss, German, or Dutch origin.



Mennonite and Amish Immigrants to Pennsylvania

423 members

JOIN

Purpose: To determine specific DNA signatures (both yDNA and mtDNA) emphasizing the families of 17th and 18th century Mennonite and Amish families to Pennsylvania, some of whom later migrated west across the United States and Canada. These families are predominately from Swiss, German, or Dutch origin.

These signatures can then be used to enhance family history:

- 1) to better determine the lineages of unidentified families
- 2) to link families together who we otherwise could not consider linked
- 3) to determine which families relate more closely in cluster groups
- 4) to assess and categorize genetic diversity among Swiss, German and Dutch families.



Mennonite and Amish Immigrants to Pennsylvania

423 members

JOIN

Common Derivatives

- Souder
- Souter
- Sauter
- Sauder
- Sauders
- Sutter
- Suter



Common Derivatives

- Zimmerman
- Carpenter
- Timmerman
- Zimmerly
- Zimmerli



Common Derivatives

- Wenger
- Wanger
- Winger
- Wingerd
- Wingart
- Vinger
- Vineyard



Common Derivatives

- Hochstetler
- Hostettler
- Hostetler
- Hostedler
- Hochstedler
- Huffstetler
- Hoffstetler



Common Derivatives

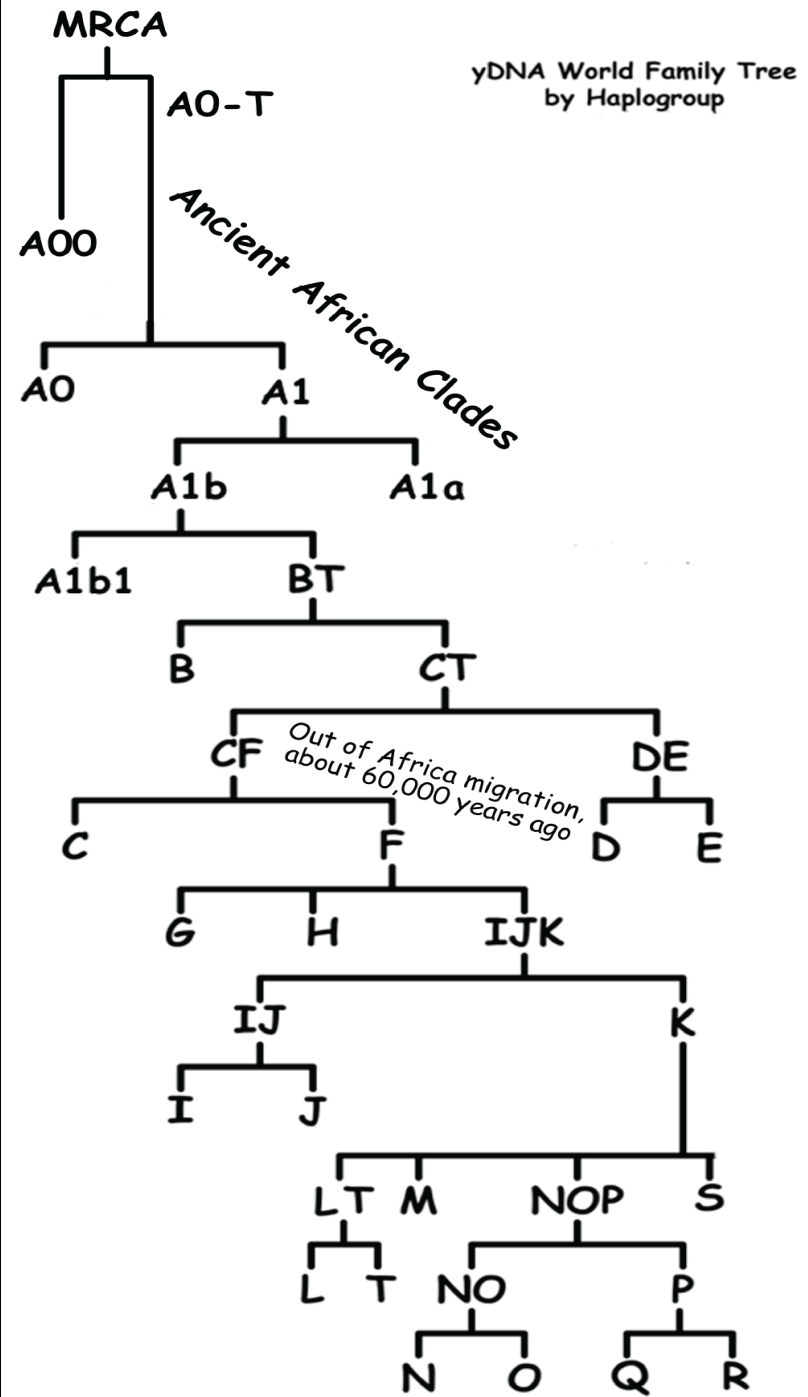
- Mast
- Maust





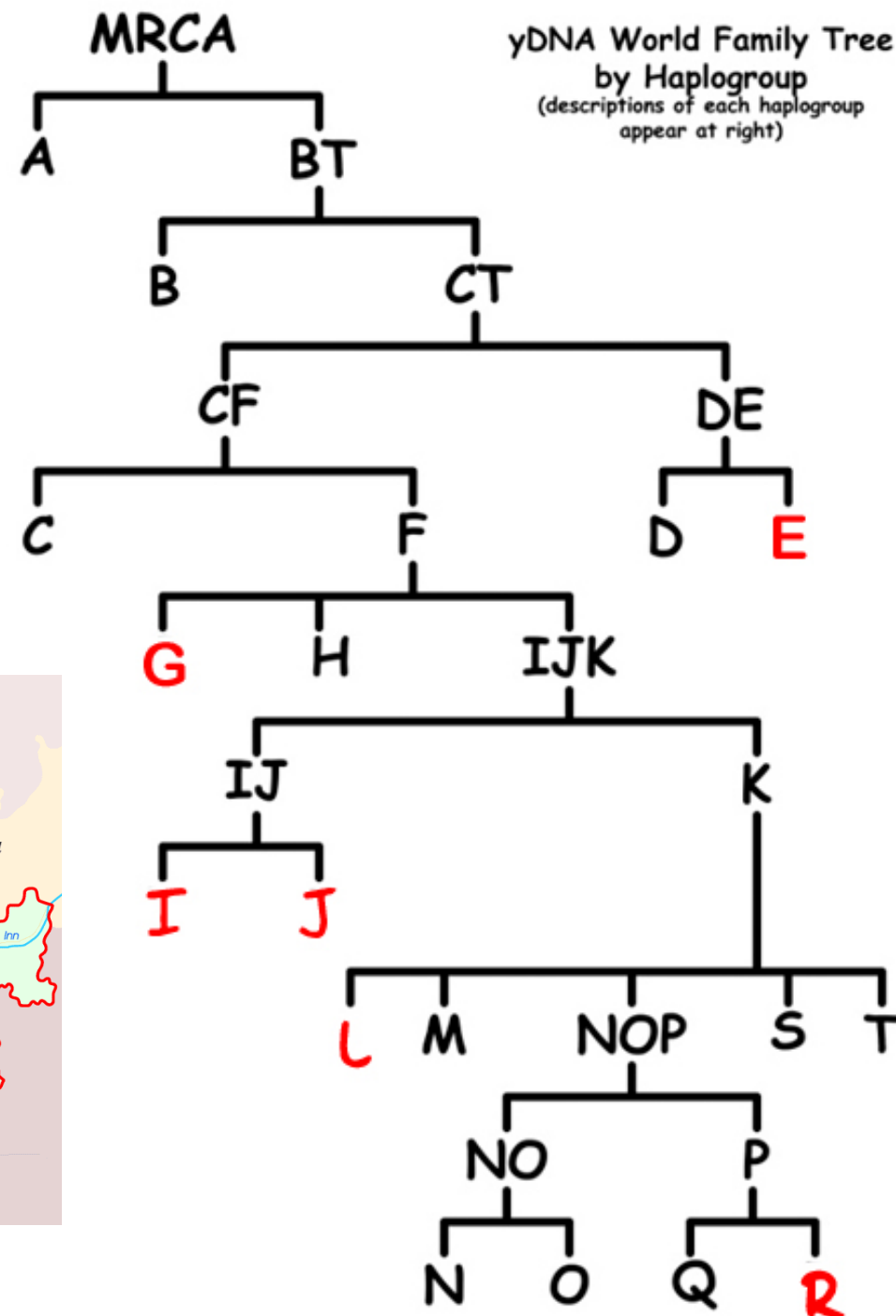
Paternally, all humans descend through one of twenty haplogroups, all interconnected through a common origin.

Your haplogroup is determined by a DNA test.



Regardless of whether your ancestry is African, Asian or European, you fall into one of these haplogroups.

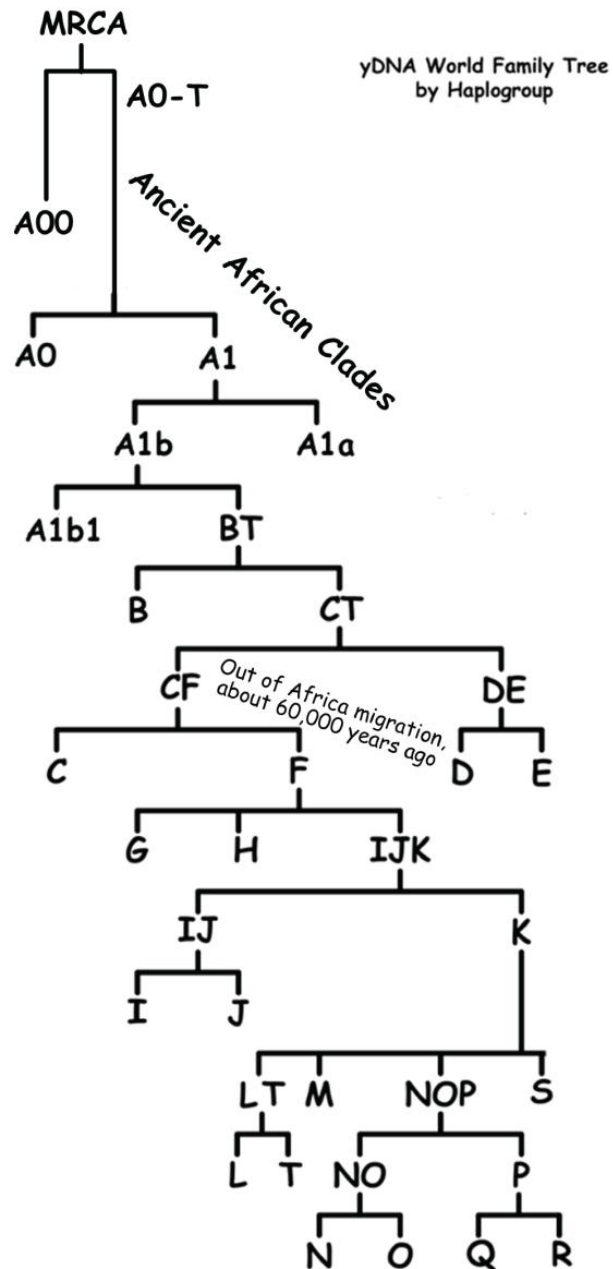
Ironically, Swiss families appear quite diverse, and fall within at least six of these 20 haplogroups.



We can confirm which ancestors were the original Germanic tribes, which were Roman, and which lived in Alpine Europe long before any of these.

Who were the “recent” colonizers of Switzerland and who lived in the Alps for thousands of years?





MRCA = MOST RECENT COMMON ANCESTOR

E-V13 – BRENNEMAN, GROFF,
GINGERICH, SHELLY

F – M89 – ROTH LISBERGER

G- L42 – BEILER, KREIDER, KURTZ,
WITWER, SOUDER

I1- M235 – BACHMAN, BOWER,
CHARLES, BOWMAN, HESS, LANDIS,
LONG, MUSSER, SIEGRIST, SNYDER,
TROYER

I2A1B – M423 – OBER, RUTT

I2A2A – M223 – MARTIN, YODER,
ZIMMERMAN

J2A – L581 – ESCH/OESCH,
SCHRAG

J2A4H2 – L25 – HOLLINGER,
METZLER

J2B2 – M241 – NEWCOMER, NISLEY

L-M349 – GOOD

Q1 – L232 – BASINGER

R1A1A1 – M417 – HARNISH,
HERTZLER, JOHNS

R1B1A2 – M269 (UNGROUPED) –
ERB, GLICK, LONGENECKER, ZOOK,
SAUDER, BRICKER, LICHTY, AMMON,
BUCKWALTER, EBERSOLE, NEFF,
HILDEBRAND, KNEISLEY, MUMMA,

R1B1A2A – L23 – SHOWALTER

R1B1A2A1 – P310 –
HERSHBERGER

R1B1A2A1A1 – U106 –
AUGSBURGER, GLICK, LEHMAN,
STAHLY, KOLB

R1B1A2A1A1A1A – L48 –
UMBLE, KESSLER, HORST,
SNAVELY, SMOKER,
HOSTETLER, KAUFFMAN

R1B1A2A1A1B – P312 – MAST,
BEAR, WEBER, HERR, WENGER,
STAUFFER, BRACKBILL,
HERSHEY

R1B1A2A1A1B3 – U152 –
BRUBAKER, LAPP, STRICKLER,
KAUFFMAN, MOSEMAN,
GRAYBILL STONER, BINKLEY,
SOLLENBERGER, SHEARER

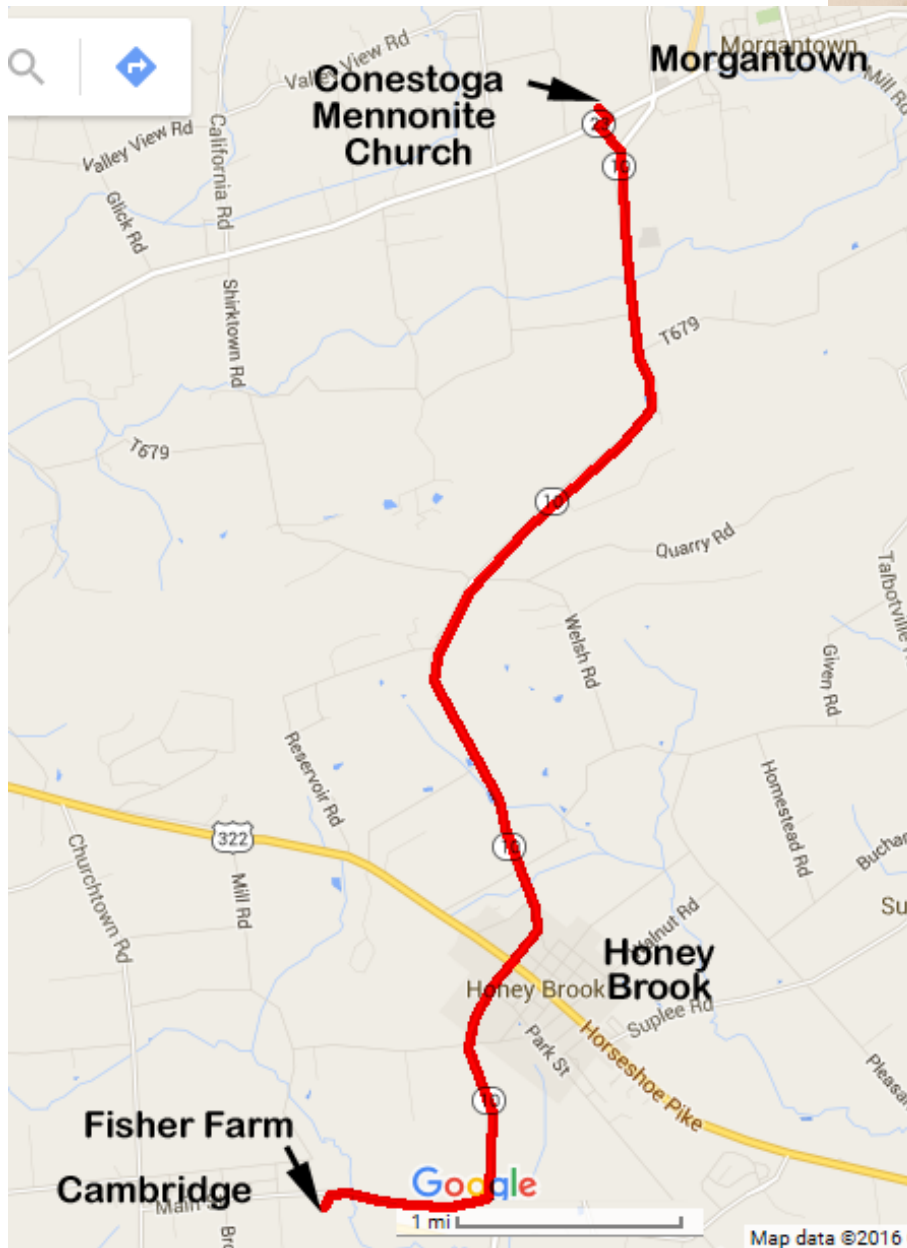
R1B1A2A1A1B4 – L21- MEILI,
GERBER, HABECKER

R1B1A2A2 – L23 –
BURKHOLDER

Elias E. Fisher (1855-1940) and Hannah M. Kurtz (1855-1937)



Elias E. Fisher (1855-1940) and Hannah M. Kurtz (1855-1937)

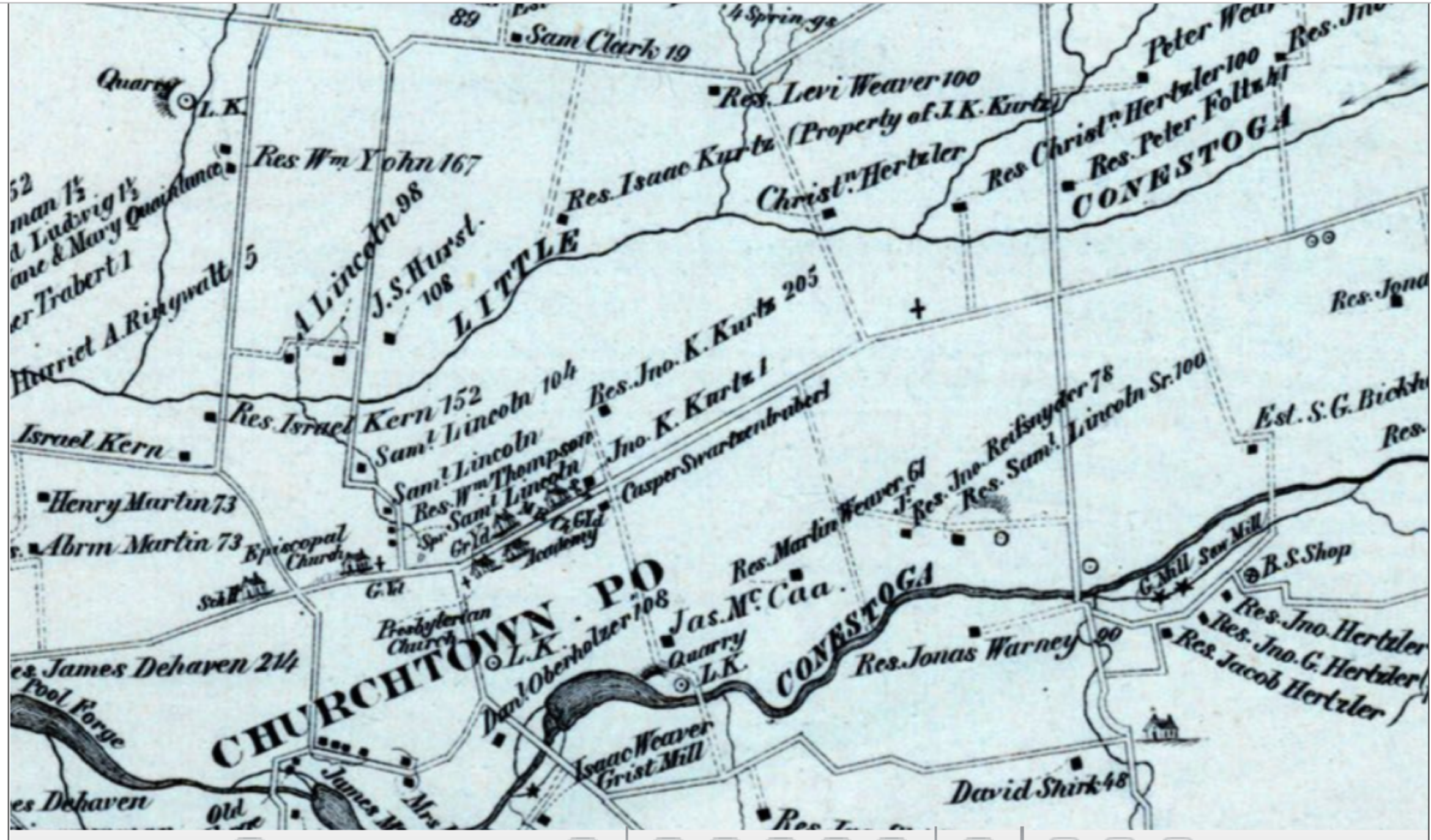


Sixth Generation - Hannah M. Kurtz

- **42. Kurtz, John K.**, b. Aug 16, 1810; Berks Co., Pa.; d. May 26, 1886; m. 1843; Elizabeth M. Mast; bur. at Pine Grove Cemetery
- **43. Mast, Elizabeth M.**, b. Mar 24, 1826; Caernarvon Twp., Berks Co., Pa.; d. Feb 24, 1861; bur. at Pine Grove Cemetery
- They owned two farms in Caernarvon Twp., Lancaster Co., PA; the first of 113 acres, he bought from Caleb Evans Apr 1, 1840 (Deed C-7-26), and the second of 80 acres he bought from James H. Jacobs on Apr 1, 1846 (Deed C-7-223).



1827



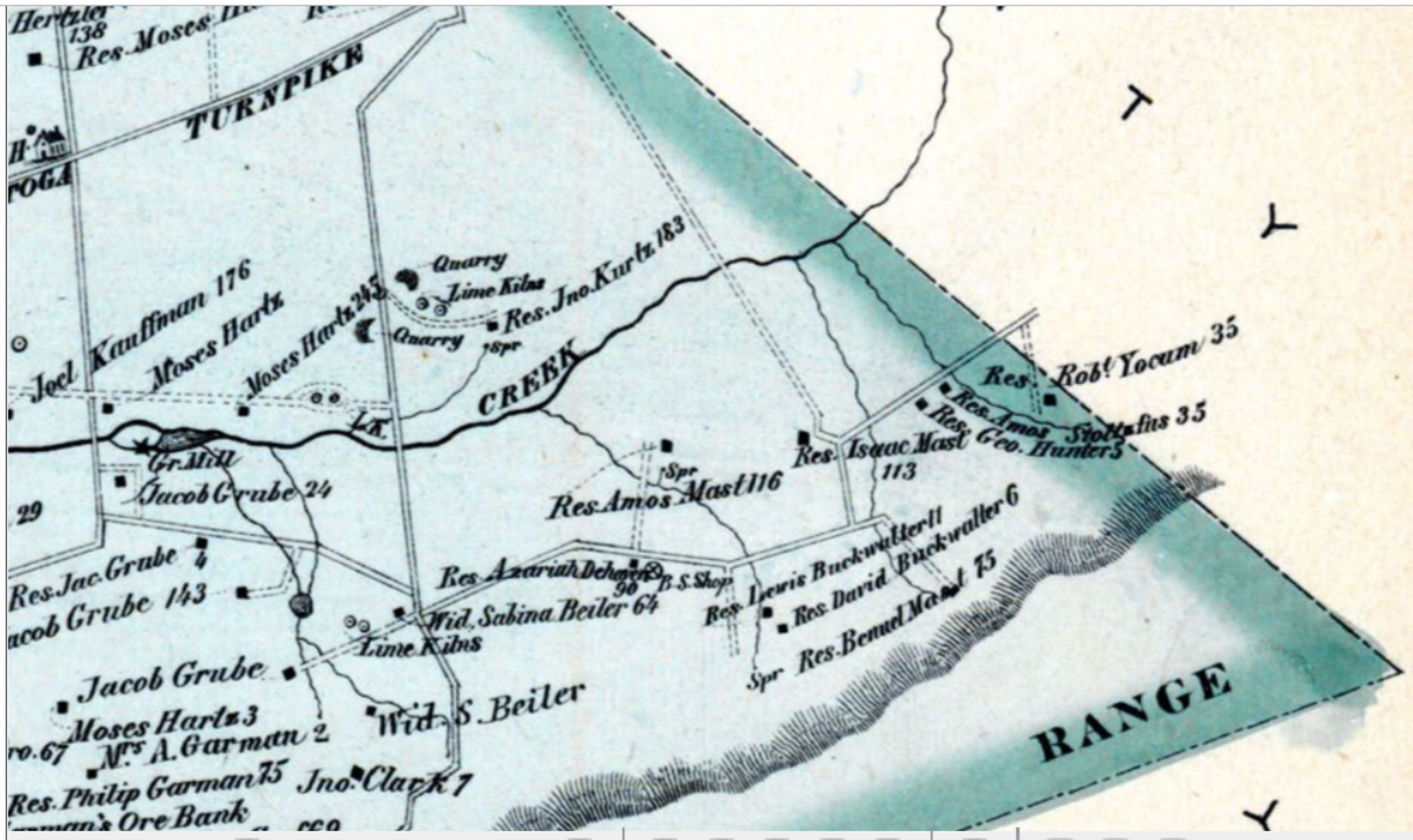
rtz

Seventh Generation - Elizabeth M. M

- **86. Mast, Stephen**, b. Sep 8, 1800; Caernarvon Twp., Berks Co., Pa.; d. Nov 8, 1868; Caernarvon Twp., Berks Co., Pa.; bur. at Pine Grove Cemetery
- **87. Miller, Hannah**, b. Mar 18, 1805; Cumru Twp., Berks Co., Pa.; d. Mar 18, 1866; Caernarvon Twp., Berks Co., Pa.; bur. at Pine Grove Cemetery.
- Their farm of 89 acres 117 perches was bought Apr 1, 1844 (Deed Y-6-594) from Christian Kurtz, and then transferred to their son Isaac in 1848. They lived on the farm at Masthof through the 1830, 1840, and 1850 census. In 1860 they are living on the farm they bought for their son Isaac.



1800



artz

Eighth Generation - Stephen Mast's

- **172.Mast, John**, b. Feb 24, 1763; d. Nov 5, 1832; Caernarvon Twp.; Berks Co., Pa. Bur Pine Grove Cemetery, Berks Co., Pa. Deacon in the Amish Church
- **173.Kurtz, Mary**, b. May 17, 1765; Northkill Amish Settlement; Heildelburg Twp., Lebanon Co., Pa.; d. Aug 5, 1845; Caernarvon Twp., Berks Co., Pa.; bur. Pine Grove Cemetery, Berks Co., Pa.
- They lived on the farm at Masthof, which was then transferred to their son Levi Mast, and then to his son Daniel Z. Mast.



1763

Ninth Generation - John Mast's par

- **344. Mast, Jacob**, (MS14), b. c1732; d. Feb 8, 1808; Caernarvon Twp., Berks Co., Pa. Arrived in Philadelphia with his uncle Johannes Mast on Nov. 3, 1750, on the ship *Brotherhood* with a large group of Amish. His parents had died young in Europe. He was first ordained to serve the Conestoga congregation at Morgantown in 1765. He became the first Amish bishop ordained in America in 1788; following the death of Jacob Hertzler. Bur. at Pine Grove Cemetery, Caernarvon Twp., Berks Co., Pa.
- **345. Hooley, Magdalena**, b. Jan 26, 1739; d. Oct 25, 1820; Caernarvon Twp., Berks Co., Pa. She arrived in Philadelphia with her parents and family on Nov. 3, 1750 on the ship *Brotherhood* with a large group of Amish. Her parents were Johannes and Veronica Hooley.



c1732

Tenth Generation - Jacob Mast's pa

- **688. Mast, ?[Joseph/Yost]** (MS1) b. c1704; d. by 1750; probably the brother of 1737 immigrant Jacob Mast (MS3) and his wife Barbara Berkey. Probably also the brother of Johannes Mast (MS2) and his wife Barbara Risser, who brought the six orphaned Mast children to Pennsylvania Nov. 3, 1750, on the ship *Brotherhood*. They left their home a Le Hang, high in the Vosges Mountains in Alsace. He is probably the son of Hans Mast and Anna Mishler of Guggisberg, Bern, Switzerland. We assume his wife came from the same community: Anabaptist names from Guggisburg include: Beiler, Binkely, Hochstettler, and Stockli. Or maybe a Berkey or Risser like his brothers.
- **689. ?[unknown]**, b. c1710; d. by 1750; (did she come to Pennsylvania with her sons? There's no tradition saying so, I think she died before immigration as well). married ?[Joseph] Mast about 1730; probably in the Le Hang Amish community in Alsace. She could be the sister to Christian Reusser (c1705-1757), who died in Le Hang, Alsace, France. Or possibly a daughter of Hans Schörtz of Ste. Marie aux Mines.



c1704

11th Generation - Jacob Mast's gra

- **1376. Mast, Hans**, b. Oct 10, 1664; Guggisberg, Switz. [d. c1731] He married Mar 3, 1693; in Guggisberg, to Anna Mischler. He was the son of Ulrich Mast and Elsi Beyeler.
- **1377. Mischler, Anna**, b. c1670; d. c1737



c1664

12th Generation - Hans Mast's parents

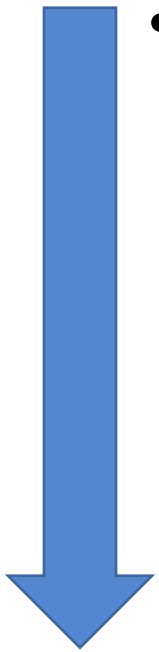
- **2752. Mast, Uli**, bapt. Mar 13, 1636; Guggisberg, Switz. [d. c] He married Jan 18, 1660/61; in Guggisberg, to Elsbeth Beyeler.
- **2753. Elsbeth Beyeler**, bapt. Mar 21, 1640/41; Guggisberg; daughter of Hans Beyeler and Elsbeth Marti



c1636

13th Generation - Uli Mast's parents

- **5504. Mast, Peter**, bapt. May 18, 1600; Guggisberg, Switz. [d. c] He married Jul 6, 1629; in Guggisberg, to Anna Zwahlen
- **5505. Zwahlen, Anna**, b. c1605; Guggisberg;



c1600

14th Generation - Peter Mast's parents

- **11 008. Mast, Bendikt**, b. c1570; Guggisberg, Switz.
- **11 009. Zwahlen, Anna**, b. c1572; Guggisberg

The church books in Guggisberg start in 1591, but the village itself is as old as 1076.



c1570



Search

Last search result

Workbooks

Shopping cart

Info Corner

- Switch to list view
- Switch to image list
- Switch to image overview
- Display as PDF
- Place in shopping cart
- Place in workbook
- Localize in archive plan
- Help

Navigation

- Go to the previous entry in the results list
- Go to the next entry in the results list
- For entry at previous level
- Go to the lower-level entry
- Go to the previous entry in the archive plan

Urfehden Pauli (Paul) Mast, der wegen allerlei ungebührlicher "Misshändel" zu Grasburg im Gefängnis lag, schwört den Städten Bern und Freiburg Urfehde., 1480.12.20 (Archiveinheit)

Archive plan context

- Staatsarchiv des Kantons Bern
 - C Staatliche Sammlungen
 - Urkundenarchiv
 - Urkunden (C I a) Urkundensammlung
 - F. Urfehden Fach Urfehden (1347-1660)
 - 15. Jahrhundert (1400-1499)
 - Urfehden Heini (Heinrich) im Varnj, Landmann im Niedersimmental, der in seiner Kindheit sich in Diebstahl verstrickt hatte und de... (1480.12.09)
 - Urfehden Pauli (Paul) Mast, der wegen allerlei ungebührlicher "Misshändel" zu Grasburg im Gefängnis lag, schwört den Städten Bern... (1480.12.20)
 - Urfehden Ruofli (Rudolf) Burgenstein, gesessen zu Bümpliz, der wegen widerrechtlicher Entfremdung und Verkauf eines Pferdes der S... (1481.04.13)

Ref. code:	Urfehden
Box:	Urfehden
Creation date(s):	12/20/1480
Title:	Pauli (Paul) Mast, der wegen allerlei ungebührlicher "Misshändel" zu Grasburg im Gefängnis lag, schwört den Städten Bern und Freiburg Urfehde.
Sealer:	Anton Striffeler (II)
Archival material types:	Urkunde

URL for this unit of description

URL: <https://www.query.sta.be.ch/detail.aspx?ID=65944>



google translate

All Books News Shopping Images More Settings Tools

About 529,000,000 results (0.64 seconds)

German

English

Urfehden Pauli (Paul) Mast, der wegen allerlei ungebührlicher "Misshändel" zu Grasburg im Gefängnis lag, schwört den Städten Bern und Freiburg Urfehde., 1480.12.20 (Archiveinheit)

Urfehden Pauli (Paul) Mast, who was imprisoned for all manner of improper "misconduct" at Grasburg, swears to the cities of Bern and Freiburg Urfehde., 1480.12.20 (Archive unit)

Did you mean: Urfehden Pauli (Paul) Mast, ...

Open in Google Translate

Feedback

Google Translate

https://translate.google.com/

Google's free service instantly translates words, phrases, and web pages between English and over 100 other languages.

Clipboard: Cut, Copy, Format Painter

Font: Calibri, 11, Bold, Italic, Underline, Text Color, Background Color

Alignment: Wrap Text, Merge & Center

Number: General, Currency, Percentage, Decimals

Styles: Conditional Formatting, Format as Table, Cell Styles

Cells: Insert, Delete, Format

Editing: AutoSum, Fill, Clear, Sort & Filter, Find & Select

UPDATES AVAILABLE Updates for Office are ready to be installed, but first we need to close some apps. Update now

Formula bar: X, ✓, fx

Column headers: B, C, D, E, F, G, H, I, J, K, L, M, N, O, P, Q, R, S, T, U, V, W, X, Y, Z, AA, AB, AC, AD, AE, AF, AG, AH, AI, AJ, AK, AL, AM, AN, AO, AP, AQ, AR, AS

14 Bendikt Mast (b. c1570) m. Anna Zwahlen

13 Peter Mast (b. 1600) m. Anna Zwahlen

12 Ulrich Mast (b. 1636), Guggisberg, Switzerland; m. Elsi Beyeler

11 Hans Mast (b. 1664); Guggisberg, Switzerland m. Anna Mischler

10 ?[Joseph/Jost] Mast [MS1]

9 Jacob Mast (c1738-1808) immigrant of Nov 3, 1750 on ship *Brotherhood* m. Magdalena Hooley

¹[34]CDYa=38→37

8 John Mast (1763-1832) m. Mary Kurtz

7 Stephen Mast (1800-1868) m. Hannah Miller

6 Isaac M. Mast (1823-1907) m. Mary Kurtz

5 Benuel Mast (1847-1931) m. Sarah Stoltzfus

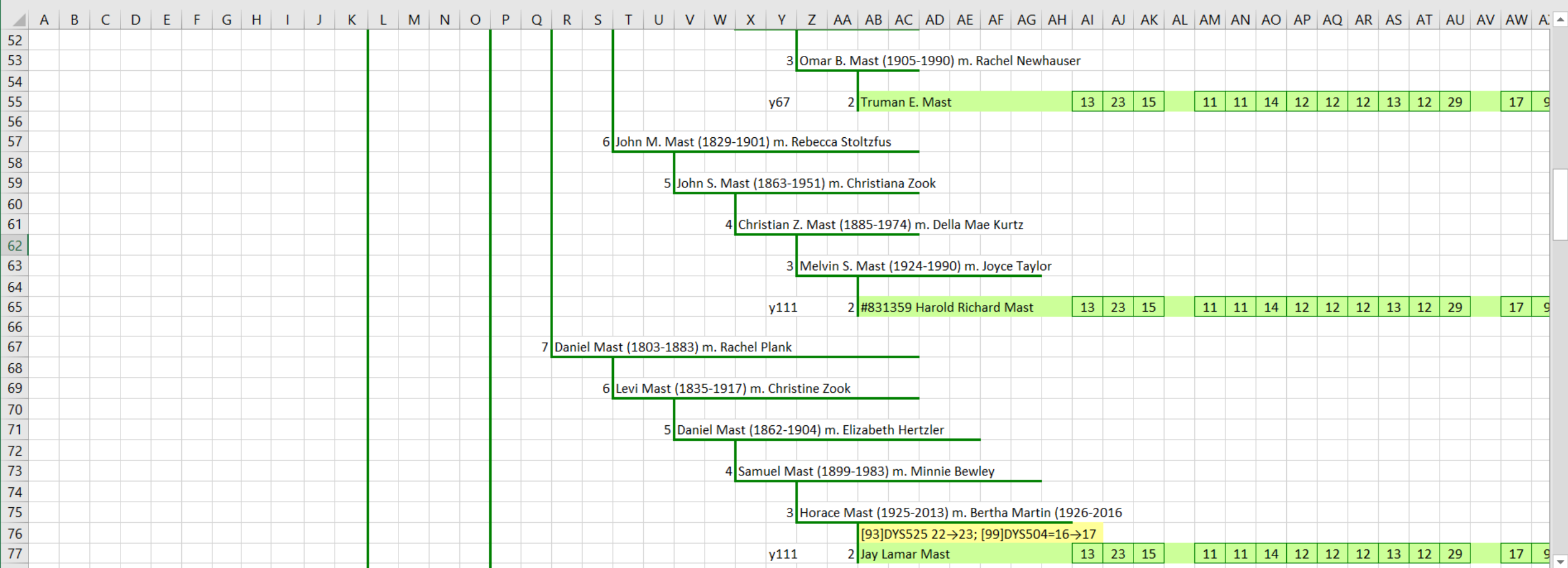
4 Emanuel Mast (1872-1844) m. Annie Blank

3 Omar B. Mast (1905-1990) m. Rachel Newhauser

Normal Page Break Preview Page Custom Gridlines Headings Ruler Formula Bar Zoom 100% Zoom to Selection New Window Arrange All Freeze Panes Split Hide Unhide View Side by Side Synchronous Scrolling Reset Window Position Switch Windows Macros

UPDATES AVAILABLE Updates for Office are ready to be installed, but first we need to close some apps. Update now

AY62



Normal Page Break Preview Page Custom Views

Ruler Formula Bar Gridlines Headings

Zoom 100% Zoom to Selection

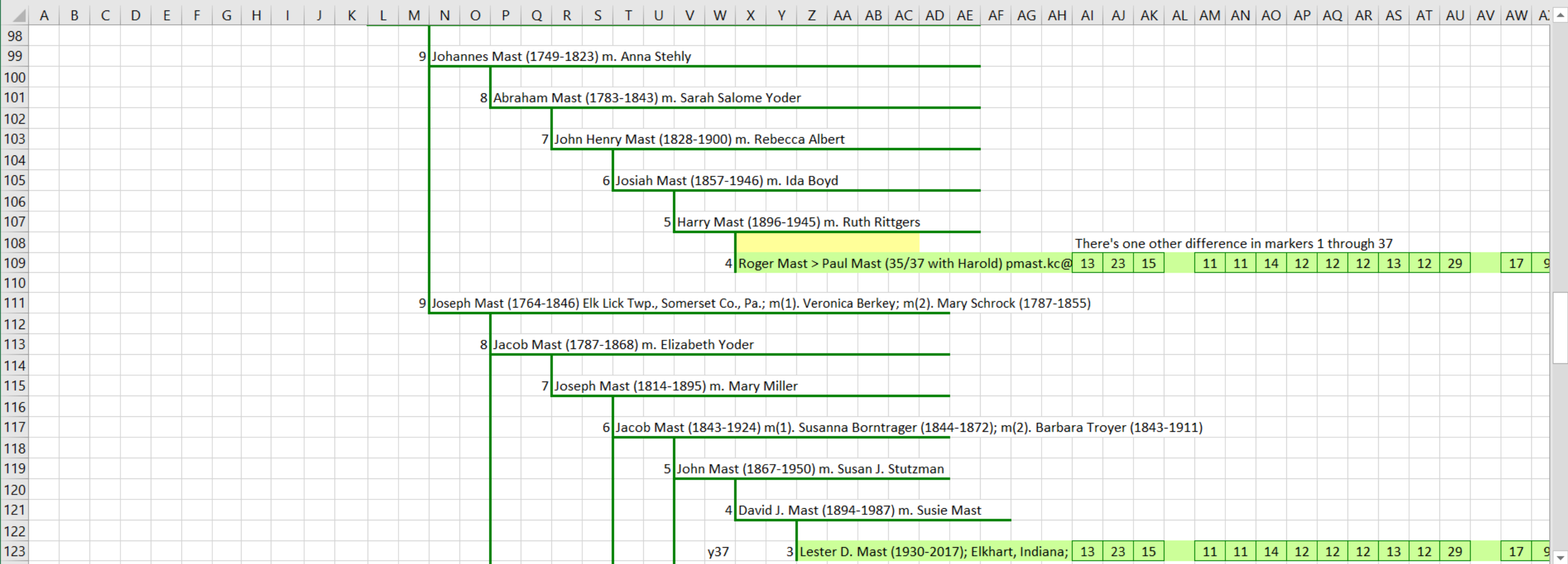
New Window Arrange All Freeze Panes Split Hide Unhide

View Side by Side Synchronous Scrolling Reset Window Position

Switch Windows Macros

UPDATES AVAILABLE Updates for Office are ready to be installed, but first we need to close some apps. Update now

AY62



87035	Binkley	Johannes (John) Binkley b.c 1680 Bern d 1749 PA	Switzerland	R-M269	13	24	15	11	11-14	12	1
204013	Musselman	Jacob Musselman b c1698, to Bucks Co, PA c1724	Switzerland	R-FGC6419	13	24	15	11	11-15	12	1
R1b1a1a2-M269 > L23 > L51 > L151 > P312 > U152 > Z56 > Z43 > BY3538 > BY38805											
467866	Kaal	John Schenk (c1696-1744; Lancaster Twp., Lanc Co.	Switzerland	R-BY38805	13	24	14	11	11-11	12	1
R1b1a1a2-M269 > L23 > L51 > L151 > P312 > U152 > Z56 > Z43 > Z145 > BY1823 > BY28794 > BY41133											
693179	Martin			R-M269	13	24	14	11	11-14	12	1
R1b1a1a2-M269 > L23 > L51 > L151 > P312 > U152 > Z56 > Z43 > Z46											
890471	Sollenberger	Jost Solbeg/Zolberg b c1544 Bern Switzerland	Switzerland	R-M269	13	24	14	11	11-14	12	1
R1b1a1a2-M269 > L23 > L51 > L151 > P312 > ZZ11 > DF27 > Z195 > Z272 > Z209 > S450 > ZZ40_1 > S21184 > FGC13557 > BY32742											
292026	Wenger	Christian Wenger, b. 1698 and d. 1772	Switzerland	R-M269	13	25	14	10	11-14	12	1
551235	Wenger	Ulrich Christian Wenger (1667-1759)	Switzerland	R-M269	13	25	14	10	11-14	12	1
888103	Wanger		United States	R-M269	13	25	14	11	11-14	12	1
756537	Whanger			R-M269	13	25	14	11	11-14	12	1
B10880	Wenger	Christian Wenger, b. 1596 and d. 1671	Switzerland	R-BY56823	13	25	14	11	11-14	12	1
125042	Vineyard	Ishmeal Vineyard	Germany	R-BY56823	13	25	14	11	11-14	12	1
R1b1a1a2-M269 > L23 > L51 > L151 > P312 > ZZ11 > DF27 > Z195 > Z272 > Z209 > Z295 > S25783 > CTS4065 > BY12176											
B110977	Warfel	Würffel, Joh, b. 1647 Sinsheim, Rhein-Neckar-Kreis	Germany	R-BY62780	13	24	14	11	11-14	12	1
R1b1a1a2-M269 > L23 > L51 > L151 > P312 > ZZ11 > DF27 > Z195 > Z274 > DF17 > Y14050											
831359	Mast	Jacob Mast, b. 1738 and d. 1808		R-Y14050	13	23	15	11	11-14	12	1
677079	Mast	Jacob Mast, b. 1738 and d. 1808	Switzerland	R-M269	13	23	15	11	11-14	12	1
335670	Mast	Hans Jacob Mast, b.1664 and d. 1759	Switzerland	R-M269	13	23	15	11	11-14	12	1
R1b1a1a2-M269 > L23 > L51 > L151 > P312 > ZZ11 > DF27 > Z195 > Z274 > Z209 > Z295 > Z270 > Z211 > Z278 > CTS12074 > BY36223											
192017	Herr	Michel Herr, 1849-1912	Germany	R-BY36223	13	24	14	11	11-14	12	1
R1b1a1a2-M269 > L23 > L51 > L151 > P312 > ZZ11 > DF27 > Z195 > Z274 > Z209 > Z295 > Z270 > Z211 > Z278 > CTS12074 > PH1171 > S8067 > BY36229 > BY36211											
19872	Graves	Gen. 169, Capt. Thomas Graves of VA	Unknown Origin	R-BY36211	13	24	14	10	11-14	12	1
R1b1a1a2-M269 > L23 > L51 > L151 > P312 > ZZ11 > DF27 > ZZ12_1											
304527	Wismer	Johan Jacob Wismer, b. ca 1659 and d. ca 1725	Switzerland	R-ZZ12_1	13	24	15	10	11-14	12	1
900963	Wismer		Unknown Origin	R-M269	13	24	15	10	11-14	12	1
R1b1a1a2-M269 > L23 > L51 > L151 > P312 > ZZ11 > DF27 > ZZ12_1 > FGC23071 > BY42720											
391337	Bare	Owen C. Bare b. 1782 PA d. 1865 IL m. Pierce	Switzerland	R-BY43425	13	24	14	10	11-13	12	1
B88200	Bair	Rudolph Bair (Bär), 1722-1788 Rifferswil Zurich	Switzerland	R-FGC23071	13	24	14	10	11-13	12	1

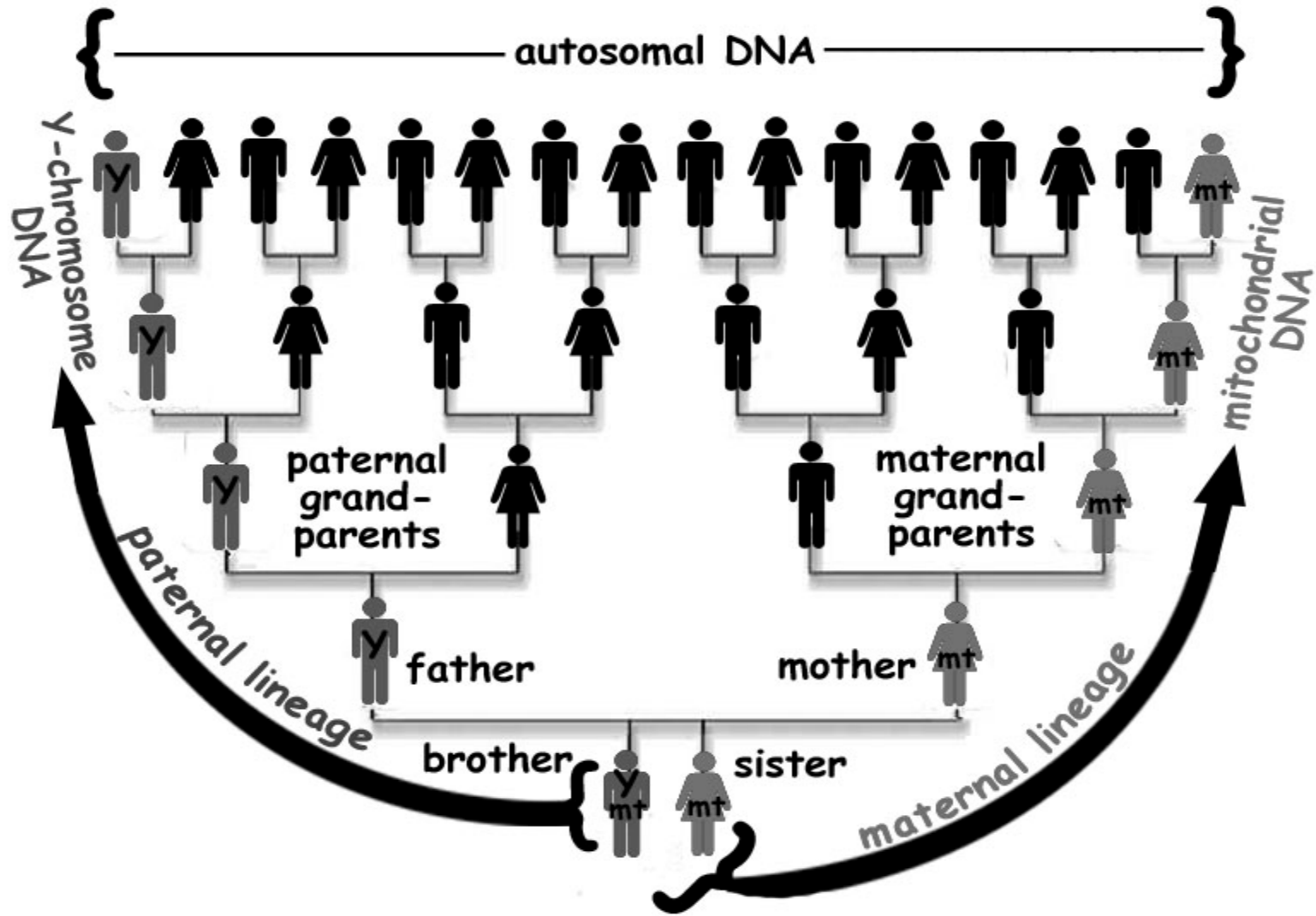
Myth #1 - Your DNA is private.



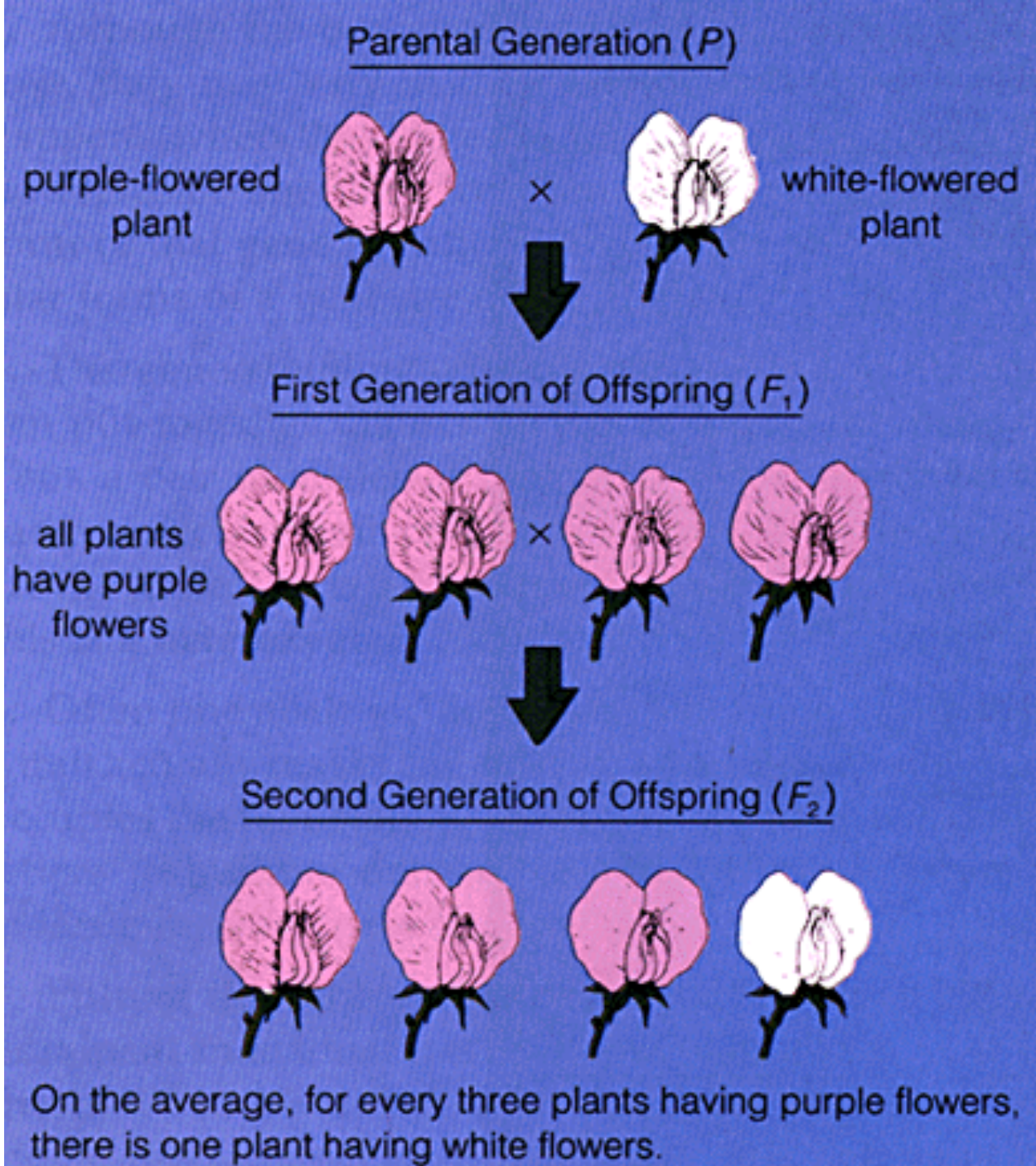
Myth #1 - Your DNA is private.



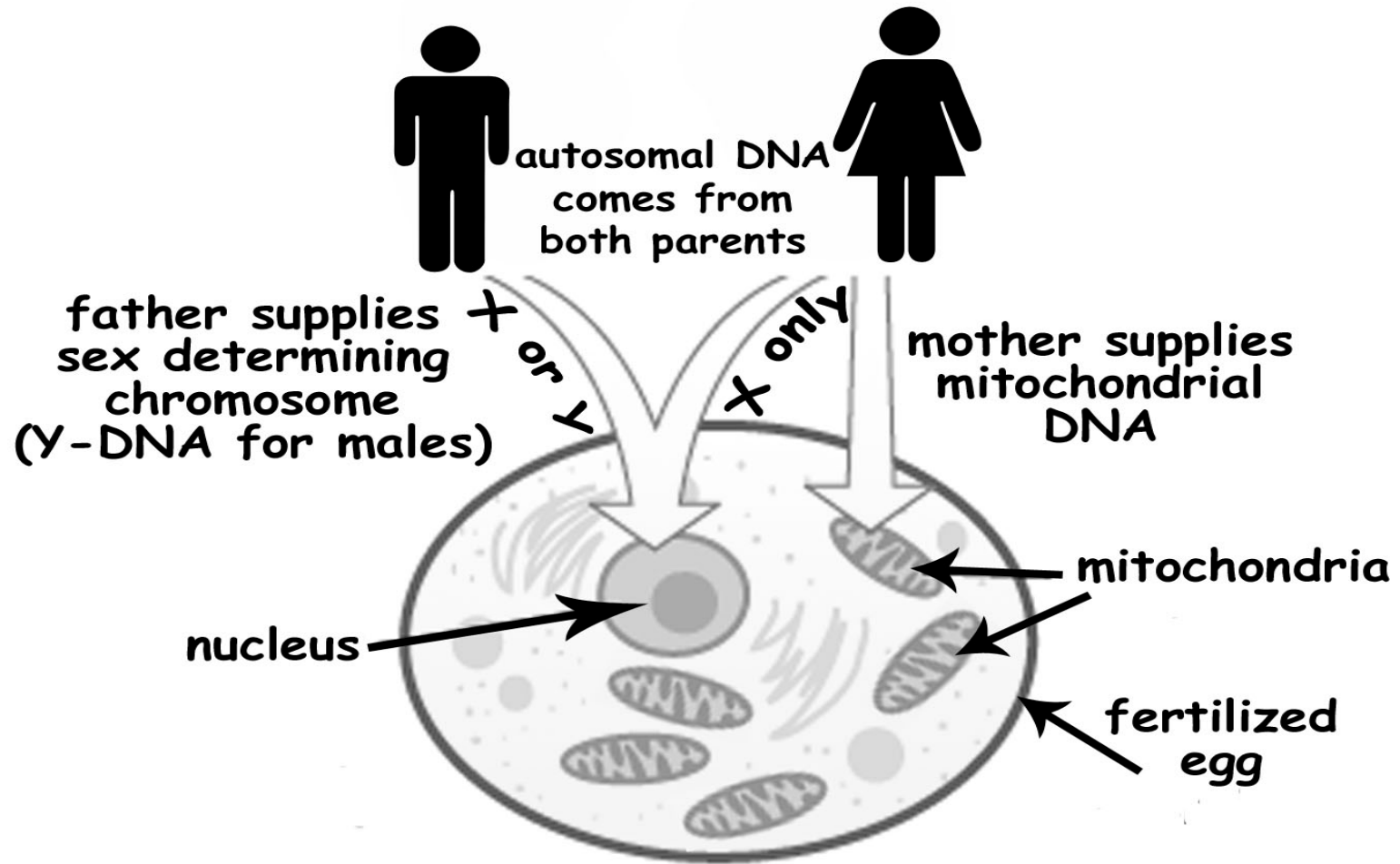
Actually, your DNA is a composite of your ancestors



Mendel found that some traits skipped a generation. Somehow the skipped generation contained the trait, and passed it to some offspring, although it was not visible.



Three Types of DNA...



Myth #2 - Your DNA test can quantify ethnicity.



Myth #2 - Your DNA test can quantify ethnicity.



What is ethnicity?



What is ethnicity?

Ethnicity - the fact or state of belonging to a social group that has a common national or cultural tradition.

Ethnic Group:

a community or group made up of people who share a common history, distinctive culture, and language.

Is biological ancestry different from ethnicity?

Is biological ancestry different from ethnicity?

Did your parents, grandparents, or great-grandparents stress one tradition over others?

Is biological ancestry different from ethnicity?

Did your parents, grandparents, or great-grandparents stress one tradition over others?

Does your ethnicity directly reflect your biological ancestry?

Is biological ancestry different from ethnicity?

Did your parents, grandparents, or great-grandparents stress one tradition over others?

Does your ethnicity directly reflect your biological ancestry?

Adoption? How does Adoption change ethnicity?

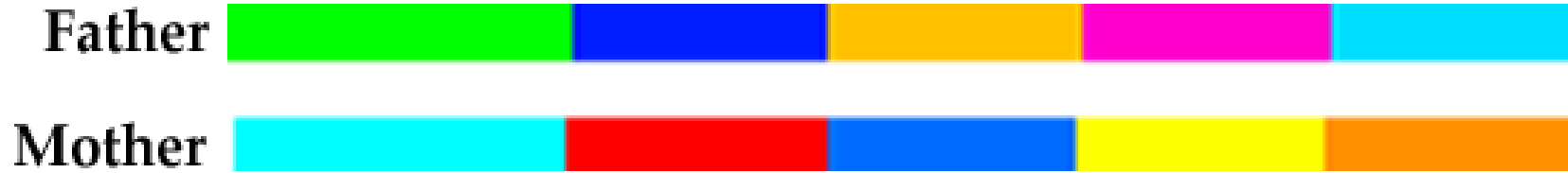
Is biological ancestry different from ethnicity?

Did your parents, grandparents, or great-grandparents stress one tradition over others?

Does your ethnicity directly reflect your biological ancestry?

Adoption? How does Adoption change ethnicity? What if your grandmother or great-grandmother was adopted?

Your DNA is a scramble of your parents



Your DNA is a scramble of your parents



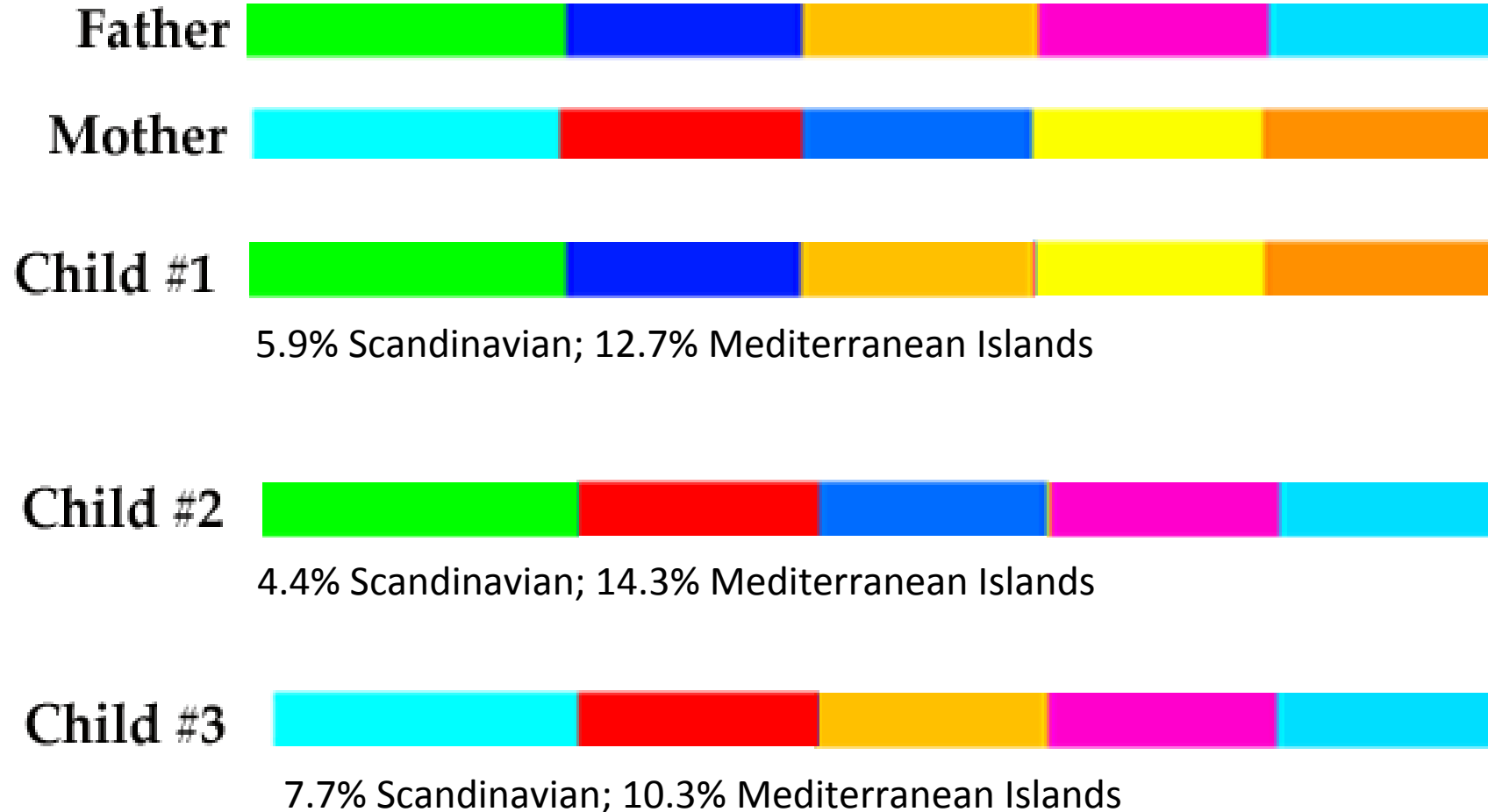
Your DNA is a scramble of your parents



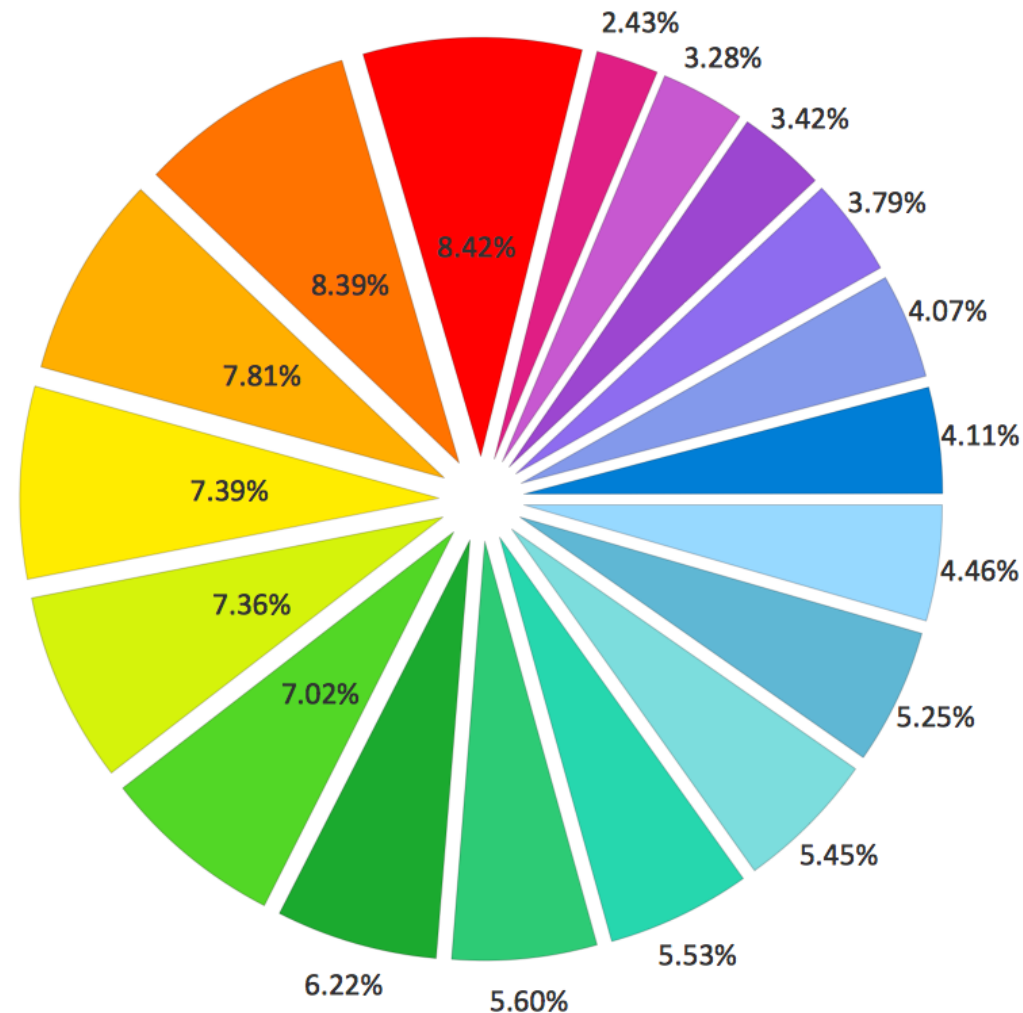
Your DNA is a scramble of your parents



Your DNA is a scramble of your parents



Your DNA is a composite of “pieces” of your ancestors, but not every “piece” is represented equally.



YDNA HAPLOGROUP MIGRATIONS ACROSS THE WORLD

