



nutlock

INSTALLATION GUIDE



CONTENTS

Page	Section	Purpose
3	Caution - Safety Precautions & Warranty	Protect yourself by doing a proper installation
4	Nutlock Testing	Displays that Nutlock is CPSC Tested
5	Key Registration and Replacment	Have a backup plan if your key gets lost
6-7	Front Wheel Quick Release Replacement	How to install Nutlock Quick Release Skewer replacements
8-9	Solid Axle (Hex Nut) Replacement	How to install Nutlock Hex- Nut Replacements



CAUTION

CAUTION!

- Nutlock recommends that a bicycle dealer / mechanic perform the installation to ensure each Nutlock nut has been fastened properly.
 - Make sure to check each Nutlock nut is sufficiently tightened before each ride.
 - If you ever feel your wheels are wobbling or are misaligned, stop riding immediately! Check to make sure Nutlock is properly fastened on both wheels.
 - Improper installation may result in a malfunction, causing serious physical injury.
- Note: Use of Nutlock may void your bike's current warranty.

CHECK YOUR RIDE!

Assure the Nutlock nuts are tightly fastened before each bike ride by lifting your front wheel into the air and giving it a strong downward strike. Make sure the wheel is still secure and in place. Repeat this process for the rear wheel.

WARRANTY

Nutlock will replace any defective units, under normal use, within a two year period from the date of purchase. This warranty excludes any damage resulting from improper use or improper repair.



NUTLOCK TESTING

U.S. Consumer Product Safety Commission (CPSC)

CPSC 16 CFR 1512 test was performed according to the CPSC Bicycle Compliance Test Manual (1976) Requirements for Bicycles standard and all other standards referenced within.

Accreditation of Testing Facility

The laboratory, ACT Lab LLC, is accredited in accordance with the recognized International Standard ISO/IEC 17025:2005. This accreditation demonstrates technical competence for a defined scope and the operation of a laboratory quality management system (refer joint ISO-ILAC-IAF Communiqué dated January 2009.)

Accreditation listing and certificate can be found at <http://www.iasonline.org>.



REGISTER YOUR KEY

KEY REGISTRATION

Take a picture of the back of your key now!

Every Nutlock key is etched with a unique key code on the back, located beneath the phrase "BE AWESOME". It is very important to register your key code online so we can always have you in our database in case you need a replacement.

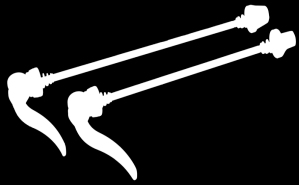
Please visit www.nutlock.co to register your key.

IMPORTANT: If you lose your key and do not have your keycode, we won't be able to provide you a replacement key and the nuts will be very hard to remove from your bike!

Ordering an Extra Key

After registering your key code on www.nutlock.co, you can order an extra key on the site.





QUICK RELEASE INSTALLATION

1. Fully remove your front wheel's quick release system.
2. **Safety Check:** Most likely, your bike has a dropout with tabs that stick out (see figures 2a or 2b). This, or any sort of protruding fixture that prevents the Nutlock nut from fitting flush **NEEDS** the provided washers for proper installation. It is extremely unsafe to tighten the Nutlock nut just against just the tabs.
3. Take the one washer and slide it all the way down your front skewer.

Figure 2a

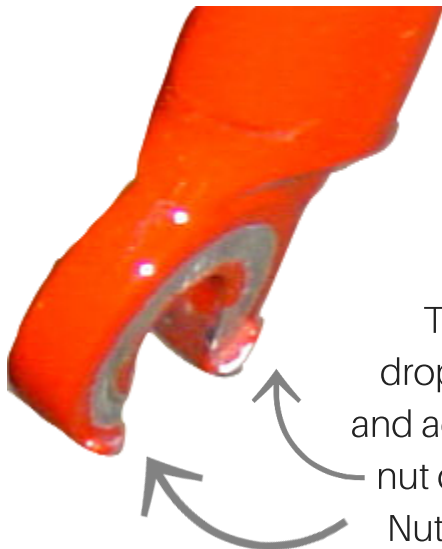
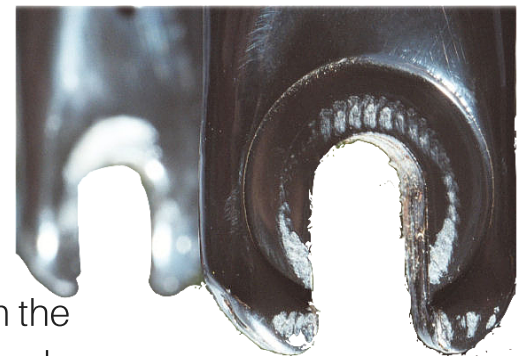
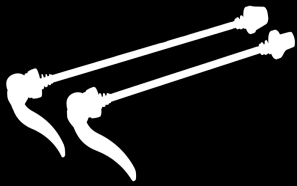


Figure 2b



These are lawyer tabs sticking out from the dropouts. Please make sure to use your washers and add extra washers (if necessary) so the Nutlock nut does not tighten against the lawyer tabs. The Nutlock nut should instead rest on the washers.

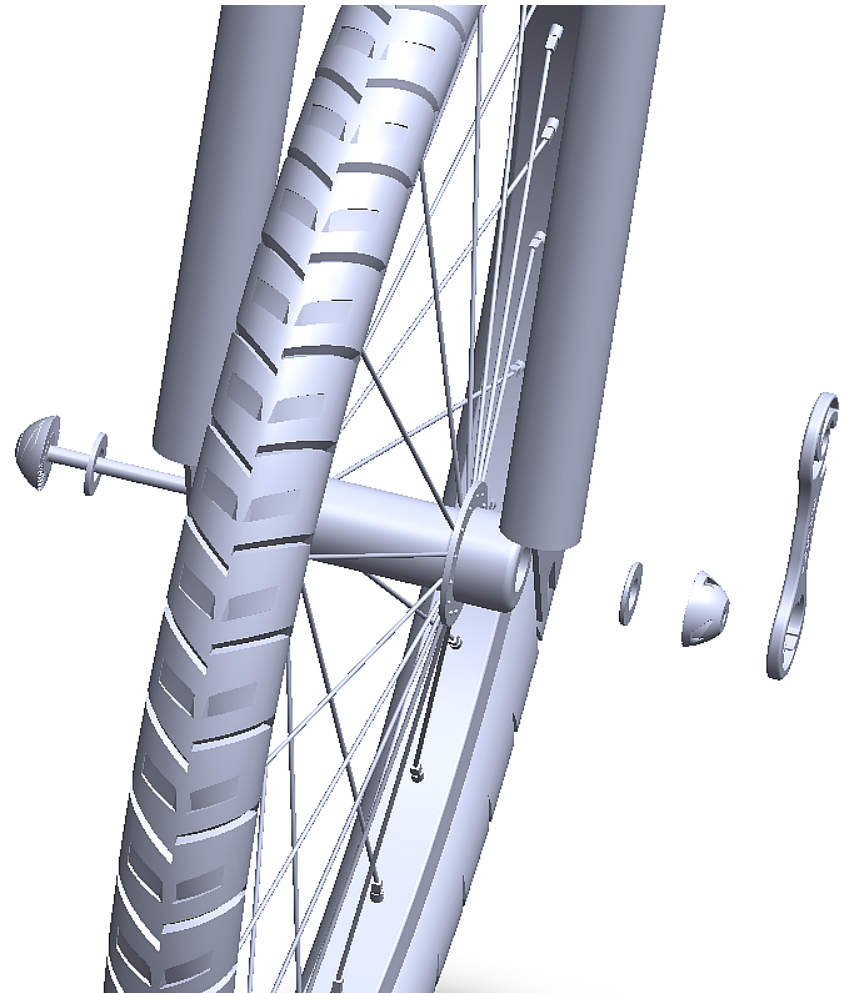


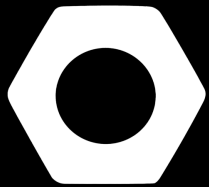
QUICK RELEASE INSTALLATION

4. Insert the Nutlock front skewer (with the washer).
5. Add the second washer to the other side of the skewer.
6. Add the Nutlock nut. Spin it on to your axle by hand until it is snug against the washer.

Safety Check: If the Nutlock nut is still interfering with the tabs, or anything, you will need to include another washer to create full clearance.

7. Use the key to finish tightening the nut 180 degrees (0.5 turns) to 540 degrees (1.5 turns).
8. Repeat all steps for your rear skewer.
9. Put your key on your key chain and use the handy bottle-opener as needed!





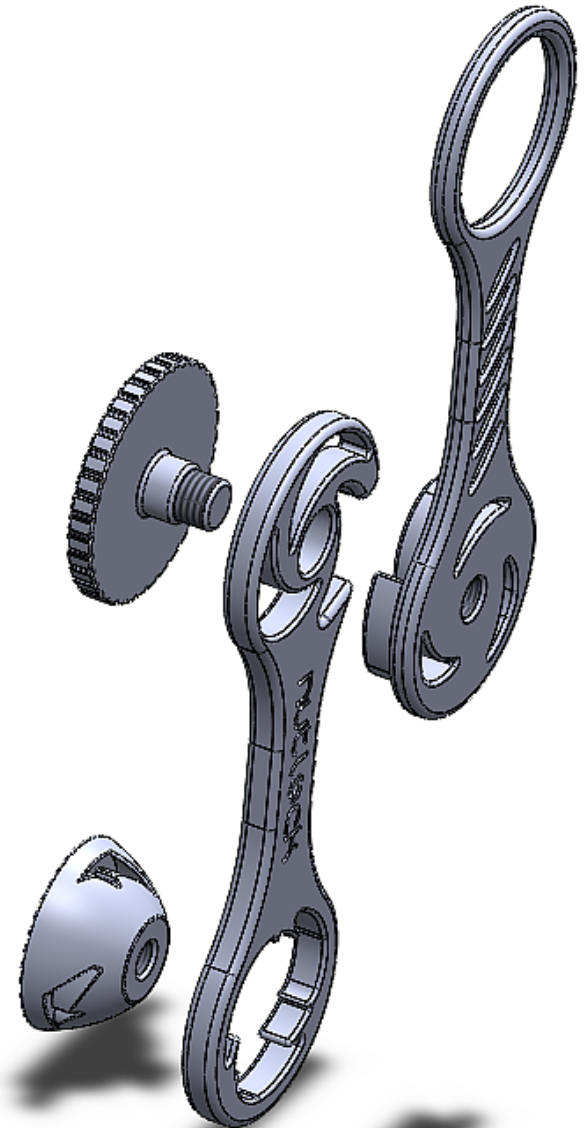
SOLID AXLE INSTALLATION

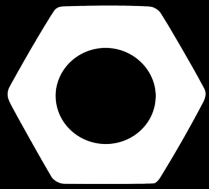
1. Assemble the Nutlock extension tool by interlinking the flat crescents on the key with the protruding crescents of the extension tool. They should fit together perfectly. Secure them together by twisting in the extension cap into the center hole.

2. On the right side of your front wheel, remove your hexagon-shaped nut using a regular wrench. If you have an existing washer installed behind your nut, leave it in place.

Safety check: Look to see if your bike has a dropout with tabs that stick out (see figures 2a or 2b), or any sort of interruption that prevents the Nutlock nut from fitting flush. If so, you need to use the provided washers for proper installation. It is extremely unsafe to tighten the Nutlock nut just against just the tabs. If your bike does not have these tabs, skip to step four.

3. Install the washer by sliding it onto the axle with the serrated part facing outwards.





SOLID AXLE INSTALLATION

4. Add the Nutlock nut by spinning it on to your axle by hand until it is snug against the washer/frame. If you are struggling to do it by hand, use the Nutlock key + extension to spin it until it is snug against the washer/frame.
5. **Safety check:** see if the Nutlock nut is not sitting flush or is interfering with the tabs, or anything else. If so, you will need to include another washer to create full clearance.
6. Use the combined key + extension to finish tightening the nut 180 degrees (0.5 turns) to 540 degrees (1.5 turns)
7. Repeat this process for each side remaining of your front and rear wheels.
8. Put your key on your key chain and use the handy bottle-opener as needed!

