

SEA EAGLE[®].com



Fishing Explorer[™]

350fx

Instruction & Owner's Manual

For video instructions visit SeaEagle.com/Instructions

Sea Eagle Boats Inc.

19 N. Columbia Street, Suite 1

Port Jefferson, NY 11777

1-800-748-8066

August 2019

Congratulations on purchasing a Sea Eagle!

With 50 years of experience in designing, selling and using these quality inflatables, we're confident that you are going to love your Sea Eagle and we're ready to proudly stand behind them.

Sea Eagle Warranty

All Sea Eagle products come standard with a 3 year warranty against manufacturing defects. The warranty begins the date that your product is delivered.

Warranty does not cover damage from use, neglect, or abuse such as but not limited to abrasions, punctures and tears.

If you receive a damaged item, please call the shipping carrier to report the issue. Do not return damaged merchandise until it has been inspected by the carrier. Sea Eagle will be notified by the carrier when they have completed their inspection and if necessary, Sea Eagle will arrange for the repair or replacement of damaged merchandise.

See complete warranty details at SeaEagle.com/Warranty.

Decals, Stickers & Registration

Always contact your state boating authorities for information on boating registration and regulations. Most states require you to register your boat if you are using a motor. ****The Sea Eagle Fishing Explorer is rated for use with electric trolling motors only.***

Upon registration it may be required to provide the Manufacturer's Statement of Origin. Purchases made through an authorized dealer or reseller may require for you to contact them directly in order to obtain this. You may be charged your own state sales tax if you were not charged sales tax at the time of purchase.

Registered boats generally require for the registration number to be applied to the boat. We do not recommend the use of decals or stickers as they tend to crack and peel over time with the repeated inflation and deflation of your Sea Eagle. Instead we suggest applying these numbers to a small piece of hard plastic or marine plywood and hanging it from your boat like a license plate if permitted by your state. Another method is to apply the numbers to the hull using either PVC based paint or permanent marker.

Contact Us

Unlike many other companies today we pride ourselves on answering the phone and helping you with any concerns, questions or special ordering needs that you may have! Feel free to give us a call at **1-800-748-8066** and we will be happy to talk with you! Our business hours are Monday to Friday from 9AM to 5PM, EST.

Sea Eagle Boats Inc.
19 N. Columbia Street, Suite 1
Port Jefferson, NY 11777
1-800-748-8066
Staff@SeaEagle.com

Safety

In a manual of this type it is impossible to give adequate space to the topic of water safety. For further information on boating safety, visit USCGBoating.org or enroll in a water safety course given by a local provider.

As a safety reminder, each Sea Eagle has a safety summary we call Boating Safety Basics printed on it. Please follow these suggestions and use good boating safety practices. In addition to the basics, we suggest you have a reasonable swimming ability and know that it is safer to go boating with a buddy. If you go alone, tell someone your float plan as described below. When possible, plan your trip so you go upwind on the way out and downwind on the way back.

Remember, boating is inherently dangerous, appropriate training and experience is required especially in white water. Follow safe boating practices, Be physically fit enough to meet the challenges, prepared for any weather conditions that might be anticipated, and follow the safety basics. Protect all personal items in a waterproof bag. Secure all accessories to the boat.

Boating Safety Tips

- Always wear a USCG approved PFD (life vest) at all times while on the water.
- Be aware of your local boating rules and regulations and abide by them accordingly.
- Check inflation levels each time before you go out and inflate your boat for a full 24 hours before undertaking long trips.
- DO NOT allow children to use your Sea Eagle unsupervised.
- DO NOT consume alcohol while boating or operating a boat while under the influence of alcohol or drugs.
- DO NOT exceed the certified maximum capacities of this boat under any circumstance.
- DO NOT go paddling alone.
- DO NOT use compressors, CO₂ or compressed air for inflation, only use Sea Eagle recommended pumps.
- DO NOT use your Sea Eagle Boat as a personal flotation device as they are not rated for that use.
- DO NOT sleep inside of your Sea Eagle while on the water.
- Bring a fully charged cell phone or other emergency contact device in a waterproof bag.
- Always tell someone of your boating plans.

Safety Equipment & Important Safety Items

Water conditions will determine the type of safety equipment needed. At a minimum have a PFD (personal flotation device) and a whistle for each passenger. PFDs are required by law in most places. White water requires special equipment such as helmets, etc.

Drinking Water & Snacks: Paddle boating is a physical activity that can deplete your reserves. Have enough water and snacks to prevent dehydration and loss of stamina. Bring enough water for all passengers. Know the warning signs of dehydration and heat sickness such as dizziness and shaking.

Extra Clothes/Layers: Avoid deadly hypothermia. Water conducts heat faster than air, so go prepared with weather proof clothing especially if the water is cold. Use a "dry bag" to store extra clothing inside so they're not damp when needed. Wear a wetsuit or drysuit when warranted.

First Aid-Kit: Contents of the kit may vary depending on your preferences but be sure to include items that match the hazards you are likely to encounter. A waterproof container is recommended.

Manual Pump/Repair Kit: Although our boats are both durable and rugged, it may be possible that you need to make a repair while on the water in which case you'll need the repair kit and a manual pump to re-inflate the boat. If this is your first repair, you may also want to bring this instruction manual with you.

Sun/Rain Protection: A hat can protect both your face and head from the rain or sun. Sunscreen will help prevent serious damage to your skin from the sun and the sun's reflection from the water. Reapply sunscreen as needed.

Whistle: Having a whistle readily available to you in case of emergency is a great way to attract the attention of others if assistance is needed.

Float Plan: Similar to a pilot's Flight Plan, consider having a Float Plan (www.floatplancentral.org). Always tell someone where you are going to be boating and what time you plan to return. Keep a cell phone in a waterproof container that will float if it falls in the water.

Safety Training

Completion of an approved boating safety course is recommended for all operators of powered boats, and is required for junior operators in many jurisdictions.

OPERATING YOUR SEA EAGLE

BEFORE & DURING USE: Avoid damage. Do not drag your Sea Eagle over abrasive surfaces like asphalt parking lots, gravel or concrete boat ramps, whether the boat is in its bag or inflated. Carry or wheel your Sea Eagle from the car to the setup point, and then to the water when assembled.

Rocks and sticks usually will not damage a Sea Eagle but be alert for partially hidden or submerged hazards like metal signs, shopping carts and other debris especially during periods of low water. Be careful of docks which may have exposed nails or screws.

FISH SPINES: Many species of fish have sharp spines than can cause small punctures in the Fishing Explorer. Do not allow fighting fish to bump the boat. Land fish onto the EVA pad.

BALANCE: To avoid being capsized by large boat wake, paddle directly into the oncoming waves. In moving water situations, avoid being swept into low branches or fallen trees and do not hold onto low branches over moving water because both can capsize the boat. Make sure bags, coolers, water bottles and other gear are secure so they won't float away if you capsize.

YAW: Yaw is the side to side motion produced by paddling causing the boat to zig-zag. To minimize, install the skegs into the base on the bottom of the boat. The skegs will improve tracking and are ideal for use in flat water areas like bays, lakes and rivers. In narrow areas like streams, you may need to remove the skegs to make the tight turns required. Remove skegs to cross shallow sections, too.

PADDLING: Most of the power should come from your torso. Your arms contribute, but too much reliance on your arms will cause you to tire quickly. For good balance, keep your head up and eyes focused on the horizon. Start paddling gently and smoothly. As the boat picks up speed it will maintain a truer heading. If you dig in hard at first you will create more yaw. Course corrections can be made by easing up or bearing down on one side or the other. Gentle turns can be made by sweeping water behind the boat. Sharp turns can be made by using the paddle as a brake on one side. Braking will allow you to maneuver sharp bends in a stream, for example, but kills forward speed.

If you or a passenger falls overboard, approach the boat on the side opposite the motor to avoid injury. For tips on getting back in, see our How to Reenter an Inflatable Kayak video on SeaEagle.com

FISHING: The 350fx Angler is optimized for fishing and hunting. Dark green color provides stealth. The thick EVA foam pad has been added to prevent punctures, especially from fish spines. Perforation on the spray skirt are for hanging lures and holding tools like pliers. Base cups on the drop-stitch floor combined with rod holder openings in the extended sprayskirt, hold up to four fishing rods.

Innovative New Features of the Fishing Explorer 350fx



FlexBrace™ adjustable foot brace



40" on board fish ruler



Customized front & rear spray skirts with built-in rod holders, tool, hook & lure holders

OPERATING YOUR SEA EAGLE

Features and Safety for Trolling Motors

- Positive (+) red wire connects to positive (+) battery terminal. Black wire to negative terminal (-).
- To calculate a battery's charge life, divide the amp hour rating by the motor amperage. For example, a battery rated at 60 Ah connected to a 30 amp motor will last approximately two hours at full speed. Note: this number will vary depending on conditions.
- Running the battery all the way down will shorten its life. Not more than 85% discharge is recommended. Multiply the above by 0.85 to get best run time.
- Charge battery after each use. Lead acid batteries like to be kept charged.
- Exposure to excessive heat will shorten battery life.
- Cold Cranking Amps (CCA) and starting power are not a consideration for trolling.
- 12v automobile, lawn tractor and motorcycle batteries can be used but are not designed for deep discharge and will wear out more quickly.
- A battery box like the Minn Kota Power Center is recommended, especially around aluminum paddle shafts which could cause an electrical short. It has a built-in circuit breaker and will keep bare skin and clothes protected if any acid leaks from the battery.
- A circuit breaker or fuse is required by the Coast Guard. Check the trolling motor manual for the size circuit interrupter needed. Some of these conveniently bolt to the battery terminal. They are intended to protect against reverse polarity and shorts.
- In the event the motor wires are placed on the wrong terminals, reversing the polarity, the wires heat up and can melt the insulation and cut through the boat.
- A 12v battery charger will be needed. Chargers are widely available and prices range widely. Inexpensive chargers are usually sufficient.
- Choose gel cell over wet cell. Gel will be less likely to leak acid if the case seal is broken.
- Lithium or AGM batteries can be a good choice even if they are more expensive. They are generally lighter, discharge evenly for longer run times, and charge evenly for a longer life.
- In a small boat, two small batteries may be better than one large, heavy one.
- More technical and safety information is available from battery and motor manufacturer's, boating organizations and publications.

Motor Safety and Reboarding

- Spinning propellers and carbon monoxide produced by gas engines can cause serious injury or death.
- Do not approach a running motor from the water.
- If you or your passenger falls overboard, do not attempt to reboard in the motor mount area.
- Turn engine off at a safe distance when approaching a swimmer in the water.

Install propeller guard on gas motors. If the motor is equipped with an engine safety cutoff (kill) switch, the driver must attach the cable to themselves, either around the thigh or wrist, or to clothing (preferably a life jacket). In addition:

- Test regularly to ensure that the engine stops when the kill cord is pulled from the switch.
- Make sure that the kill cord is in good condition.
- Always attach the kill cord securely to the driver, ideally before the engine is started, but certainly before the boat is put in gear.
- Stop the engine before transferring the kill cord to another driver.
- Wireless kill switches are available and each passenger can wear one.

Capacity Ratings and Dimensions

Persons: 1 Person

Total Weight Capacity: 575 lbs

Maximum Engine Rating: 2 HP

Chambers: 3

Length: 11'-6"

Boat Weight: 51 lbs

Width: 3'-3"

Max. Tube Diameter: 11.5"



WARNING: This product contains one or more phthalate chemicals known to the State of California to cause cancer, or birth defects or other reproductive harm.

Fishing Explorer | SETUP: VALVES & PUMPS



Using the Recessed Valve
The 350fx has one valve for each side chamber & one valve for the removable floor.
Remove the cap to access the valve stem.



The correct adapter for the valves is pre-installed in the hose. If adapter is too tight, stretch red gasket to soften it.

The groove in gasket faces outward.



Press and turn the stem counterclockwise so it can pop UP. When the stem is up, the valve is closed and will hold air.
To let air escape for deflation, press and turn the stem clockwise until locked open.



WARNING:

Air compressors that are designed for other uses like tire inflation (usually over 30 psi) can easily over-inflate and cause harm to your Sea Eagle that uses a much lower pressure. For this reason, we recommend using only Sea Eagle manual or electric pumps.

Fishing Explorer | ASSEMBLY & INFLATION



Using the Two Stage Pump (Bravo 4)
In the double action mode the pump inflates on the up and down strokes. Automatically switches to single action mode if inflating beyond 6 psi (pounds per square inch).



Locate an area large enough to unfold the 350fx avoiding hazards that could damage the kayak or injure you.



Twist the pressure gauge into "Inflation" port on the handle. Twist hose onto gauge. Inner red numbers indicate PSI pressure.



Installing the Skag

Slide skag into base. Secure skag with clip. If skag will not slide into the base, do not force it. Refer to troubleshooting section.
Do not use skag in whitewater.



Installing the Flex Brace

Remove metal bar from the clips on back of pedal.

Insert rod through pedal.



Insert rod with pedal into Flex Brace base end nearest to valve.



Place one knee behind Flex Brace base as shown here. Pull side of boat away from Flex Brace, bending the base while pulling rod to the hole. Release boat. At this point, rod may not be engaged in hole.




Engage rod fully into hole by pressing rod against base until it slides in.

Adjust pedal position for fit. Align pedals with each other using the raised number scale on each base.




Floor Drains

Sixteen drains are located along edge of floor. Screw floor drain caps down tightly. Drains should be closed during use except in whitewater situations.

 **Caution:** Boat will partially fill with water with drains open.



Before entering white water, unscrew caps. Pull caps off their retainer ring to keep cap from covering opening as water rushes out. Stow caps in seat back zippered pocket or other secure location.

 **Caution:** Do not tuck cap under inflatable floor, damage to the black fabric floor may result.

If drains leak, refer to Troubleshooting section.



INFLATION

Starting with the sides, insert the adapter into the valve, turn it to the right until it is fully seated and then begin inflation. Valve stem should be in the **up** position



Inflate sides to 3.2 psi (225m Bar). PSI is marked in red.

Note: Pressure gauge will not begin to register until boat begins to get pressurized.



Completely tuck edge of floor under sides. Inflate floor to 3.2 psi.

Floor can be inflated up to 10 psi, pressure higher than 3.2 psi will not improve performance, but will make floor more stable to stand on.



When inflated, the floor should make a "chine" below the sides. If floor needs to be pushed down, turn boat on its side, push downward on the side and hit the floor with a fist.



Floor straps hold the floor in place even if boat is flexing in extreme white water hydraulics.

To attach, run strap over top of floor through D-rings. Free end goes up through middle slot of buckle and down through front slot.




Tall Back Seat (TBS) (OPTIONAL)

Place seat between the D-rings in the middle of the boat. Clip straps to D-rings. Adjust straps so seat works with Flex Brace footrest. Seat base can be placed under floor strap.



For use with motor mount, Tall Back Seat or Deluxe Kayak Seat can be installed further back in the boat as shown here.

 **Caution:** Moving the seat back can make the boat more difficult to control, especially in windy conditions.



Green Deluxe Kayak Seat (OPTIONAL)

The Green Deluxe Kayak Seat (DKSG) has two internal bladders, two one-way air valves and two straps with clips for securing the seat to the D-rings.



One-Way Air Valve (Found only on DKSG)

Tether the valve onto the valve bases by stretching the retainer rings to fit over the groove in the bases.

Note: Stretch the rings or use a hairdryer or hot running water to warm ring if too tight.



Attach the hose with the wide ended adapter to the Bravo hand pump.



Insert wide ended adapter into seat valve. Inflate until comfortably firm. Tighten valve caps securely to avoid deflation.



Lay board over rear D-rings.

Position motor mount block close to strap. For best steering and stability, motor needs to be close to side of boat.



Fishing Rig (OPTIONAL)

To assemble and install the Swivel Seat Fishing Rig, please refer to the supplemental instructions page 15 of this manual.



Run strap through D-rings with the buckle upside down. Mounting block should be close to the D-ring. Run the free end of the strap through the buckle and pull tight.




Kayak Motor Mount (Optional)

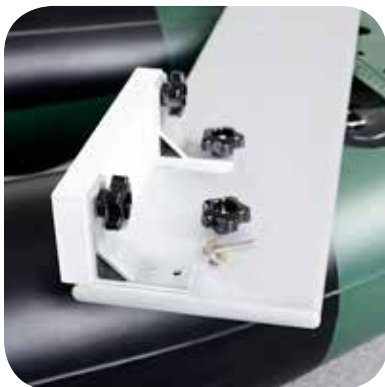
Kayak Motor Mount for small trolling motors includes an aluminum board, L-brackets, 4' straps, mounting block and hardware.



Run the free end through the back of the buckle and tuck excess strap under buckle. Strap can be trimmed down for convenience. Repeat on other side.

 Caution: Straps stretch when wet, check tension frequently.

Note: Motor mount block can be mounted on front edge of board by flipping board upside down.



Kayak Motor Mount (Optional)

Use the short (M8x40) bolts to secure brackets to the board. Use long (M8x50) bolts to secure mounting block. A tool may be needed to hold bolt head. Board can be flipped over longways for left handed operation.

Fishing Explorer | ASSEMBLY & INFLATION

All of our kayak paddles assemble in the same manner. Below, the AB30 7'10" paddle is shown.



Kayak Paddle (OPTIONAL)

The asymmetrical spoon blade design of this kayak paddle will allow for a smooth entry and an even pull, maximizing the power from each stroke. They will also require less gripping force.



Put the shaft together first. Insert the shaft piece with the button into the piece with three holes. Lock the button in the middle hole.



Next, slide the drip guards up the shaft to about an inch above the button hole. Insert the blades into the shaft and adjust until the button locks the blade in place.



The additional holes in the shaft are for "feathering" the blades. Blades can be offset 45° from each other. This makes paddling into a stiff breeze easier as the blade that is not in the water will be able to slice through the wind with little resistance.



Rod Holders

The front and rear spray skirt can accommodate up to three rod holders each. Check that rod engages in base on floor. Slot shaped holes are for tools, triangles are for hanging lures.



Kayak Anchor Trolley

Front and rear D-rings are located on the side of the boat. They are intended to be used as an adjustable anchor arrangement.

An anchor trolley can be configured in several ways. In this example we ran a 24' line through the D-rings and tied both ends to a 2" plastic ring.

An anchor line with a float is clipped to the ring. The ring can be pulled forward and back to adjust the anchor position.

*Anchor trolley systems currently not sold by Sea Eagle.

Fully assembled and ready to go.

Deluxe Solo



Pro Solo



Swivel Seat Fishing Rig



Pro Motor Fish Rig



Fishing Explorer | DEFLATION




To deflate, push down on the valve stem and quarter turn it to the right. The stem will stay in the down position, allowing the air to escape.

Warning: Air escapes with force, do not place face directly over valve.



Remove skeg and Flex Brace bars with pedals. To remove Flex Brace, press a knee against Flex Brace. Pull side of boat until bar pops out of hole.

Snap rod into retainer clips on back of pedal.

 **Caution:** DO NOT pull on center of rod. Rod will bend.



Fold rear end of boat at keel base.



Fold first fold in half, folding the tip of the kayak under. Continue folding toward the front of boat pushing air out as you go.

Fishing Explorer | DEFLATION



Place bag under bow. Finish folding boat onto bag.

Run strap through both loops and back through first loop.

Pro Tip: Run strap through both loops. Then fold strap and run fold through front loop. To remove strap pull free end until loop pulls through.

Fishing Explorer | CLEANING & PROTECTING

Dry after each use to avoid mold. **While washing or rinsing: close the valve and twist the cap on so water cannot not enter the chamber.** Sea Eagles can be cleaned very effectively with general purpose cleaning products and a scrub brush. Towel dry.

Protection from the Sun and Heat

Avoid leaving the boat in direct sunlight when ashore. Temperatures on a beach, dock, davit, etc. can get very high, which could affect the vinyl or glue. Excessive exposure to sun and heat can cause your Sea Eagle to become sticky or cause the glue to fail.

Treat the boat with a UV protectant such as 303 Aerospace Protectant. Generally, protectants are a thin film of oil, which will help keep your Sea Eagle clean. Avoid applying protectant on the EVA pad or places where foot traction is needed. Treated boat will repel sand, water scum and tar stains.

Fishing Explorer | STORAGE

If you're planning to leave your Sea Eagle outside, keep it raised off the ground and covered so it is not exposed to sunlight, rain, leaves, berries, bird droppings, etc.

Storage Tips: *"The best way to store a Sea Eagle is folded up in it's bag".* - Cecil Hoge, Jr., Sea Eagle President

- Check for water in the chambers. Water will leak out of open valves when it is rolled up.

- Water left inside can leak out and cause a lot of mold. Dry thoroughly to prevent mold.

- Rodent-proof the storage area. Mice, squirrels and other small rodents can do a lot of damage.

- Avoid excess heat. Do not store in direct sunlight, in an attic or a metal shed.

- In temperatures below freezing, do not drop, strike or unroll until it is brought to room temperature.

- It can be stored inflated. If hung, support it along its length.

- After storage, inspect for loose items, damage and leaks.

Fishing Explorer | TROUBLE SHOOTING

Floor Drains

If you suspect the drains are leaking water into the boat, prop boat off the ground, and fill it with enough water to cover the drains. If water leaks out, remove caps:

- Clear any sand in the threads
- Heat bases with a hair dryer

Bases can become misshapen when boat is tightly folded for long periods. Heating will return base to its original shape. Replace cap when done.



Caution: Do not allow hair dryer heating element to touch base. Hot element will melt base.

If your Sea Eagle has lost pressure, it does not necessarily mean it is leaking. If it is inflated during the heat of the day and the temperature drops during the night it will be softer in the morning. If launching in very cold water, the air inside may contract and cause a loss of pressure. Add more air to restore to full pressure. If temperature is not a factor and your boat is losing air pressure, it's time to look for a leak. Follow these 4 steps:

Step #1. LOOK

Visually inspect the boat close up and if necessary, flip it over and closely check the outside. Any large leaks when your boat loses a considerable amount of air should be clearly visible.

Step #2. LISTEN

If you have a rough idea of where your leak is but can't see it, you may want to try listening for it as you may be able to hear the air escaping and pinpoint the leak.

Step #3. TIGHTEN

Check the tightness of the one-way recessed valves as well and if necessary, tighten them with the valve wrench included in the repair kit canister.

Step #4. SOAPY WATER TEST

You'll need a bucket and liquid dish washing soap. Fill the bucket with clear water, and add a good squirt of soap (couple of tablespoons) to the water. Inflate the leaking chamber to full pressure. Spread lots of soapy water on the leaking chamber

Fishing Explorer| TROUBLESHOOTING

with a hand towel or large sponge. Don't assume the leak is coming from the valve or seams. The leak may produce bubbles, make hissing or sputtering noises, or spray water. Spray bottles are not effective at locating many leaks.



Fishing Explorer| REPAIRS

Even though Sea Eagles are very rugged and tough, you may still experience the occasional puncture. Fortunately most repairs are fairly easy and only take a few minutes. For extensive repairs, please contact us directly to provide you with further assistance. The best way to do this is to e-mail us a digital photo of the area in question along with your hull identification number to staff@seaeagle.com.

You can also call us directly at **1-800-748-8066 ex. 314** and ask to speak with Technical Support for further assistance or a quote for having your boat mailed to our facilities for our professional repair services.

Sea Eagle repair fees start at \$75.00 and does not include return shipping charges. Please note that Sea Eagle does not service any other brand other than our own. All items sent to our repair facilities must have prior authorization in the form of a Return Authorization Number.

Repair Kit

All Sea Eagles come standard with a repair kit which includes PVC patches and PVC glue. Repair kits also include a valve tool.



Fishing Explorer| REPAIRS

PVC Based Glue

To patch your Sea Eagle, use an adhesive for PVC boats. Plumber's cement, epoxy, Flex Seal, waterproofing sprays and Gorilla Glue do not work.



Pinholes

Deflate the boat and thoroughly clean and dry the area that is to be repaired.

For small punctures less than 1/8" apply a small drop of glue and allow 24 hours to cure.



For immediate use allow 30 minutes to dry and then inflate the compartment only 3/4 full and if necessary make a more permanent repair later.



Patching

The most common repairs are a puncture or small cut. A penny size patch is sufficient for repairs of this type.





Trace the outline of a penny on the patch material and on the boat. If a larger patch is needed, use a larger item as a template.



Cut patch along the outline with scissors.



Pro Tip: Trace the outline of the penny on masking tape and cut with a utility knife. Apply tape to the boat instead of tracing on the boat.



Apply glue to the patch and boat. Allow to dry 15 minutes. Glue must be dry to the touch. If glue layer is thin, apply second coat, allow to dry 15 minutes.



Apply patch to the boat. Smooth with finger or a smoothing tool such as a spoon, handle of a utility knife, or screwdriver. For best results, heat patch with a hair dryer 10-20 seconds and smooth with tool.

Patching Tips:

- The chamber must be deflated or the air will force a path through the glue.
- Keep the patch size to a minimum, the bigger the patch, the harder it is to seal. The most common repair failures occur because the patch is too big.
- For repairs larger than a puncture, overlap the damage area by about ½" on each side.
- Do not apply the patch while the glue is wet.
- Covering a leaking patch with another patch rarely fixes the problem. To remove a patch, heat it with a hair dryer and peel it off.
- For field repairs, allow at least an hour to cure. Other repairs, allow to cure overnight.
- Patches can be removed by heating with a hairdryer.
- **Never** use a heat gun on your boat.
- Clamps and weights are not needed.

For a demonstration of good patching technique, please view the **How to Repair** video on the instruction page of our web site. There is a link at the bottom of every page at SeaEagle.com or type "instructions" into the search box.

Warped Skeg or Skeg Base

If the skeg base is bent from storage or use, heat it up with a hair dryer and bend it back into shape. It will hold its shape after it cools. If not folded properly, the base can get warped in storage. Never hammer the skeg into a warped base as it will break the base.

Floor Drains

If you suspect the drains are leaking, prop the boat up and fill it with enough water to cover the drains. If water is leaking:

- Clear any sand in the threads
- Heat drain bases with a hair dryer. Bases can become misshapen when boat is tightly folded for long periods. Heating will return base to its original shape.



Sea Eagle offers a large array of accessories for your Fishing Explorer.



Personal Flotation Devices (OPTIONAL)

U.S.C.G. approved. Life jackets, paddling vest, PFD Belts available in various sizes.



See-me Safety Light (OPTIONAL)

Coast Guard approved LED personal safety light emits a 360° light visible up to 3.4 miles. It also attaches to a PFD!



Squid Anchor Kit (OPTIONAL)

Extends the life of your Sea Eagle. Simply spray on every 30-45 days to improve resistance to UV, chemical & other types of harmful exposure.



EZ Cart Small (OPTIONAL)

Transport your kayak from your car to the water and back with ease. Quickly assembles & disassembles.



303 Protectant (OPTIONAL)

Extends the life of your Sea Eagle. Simply spray on every 30-45 days to improve resistance to UV, chemical & other types of harmful exposure.

Contact Us

Unlike many other companies today we pride ourselves on answering the phone and helping you with any concerns, questions or special ordering needs that you may have!

Feel free to give us a call at **1-800-748-8066** and we will be happy to talk with you! Our business hours are Monday to Friday from 9AM to 5PM, EST.

Assembly Instructions **Explorer 350FX Angler** *Swivel Seat Fishing Rig (SSFR)*

The Swivel Seat Fishing Frame provides a higher seat with rod holders for improved comfort and capability.



Rod Holder Screws

8 #6 x 1" phillips head

Needed: Drill Driver with #2 bit or phillips head screwdriver.

Base Screws:

4 - 1" Hex head screws

4 - Wingnuts

Fishing Rig:

Swivel Seat

Aluminum Frame

2 - Scotty Rod Holders with push button mounts

2 - 4' Straps with Buckles

One-Time Setup

Attach Scotty Rod Holder bases to rear rod holder crossbar.

Use the #6 stainless steel screws to secure Scotty bases onto rod holder bar. This step is easier done with a drill and screwdriver tip than a screwdriver. This is a one-time task.



Aluminum Frame

Attach seat to aluminum H-frame plate. Run the 1" hex screws up through swivel base. Tighten wing nuts onto hex head screws.



Mounting Fishing Rig

Place the Fishing Rig between the center D-rings.

Note: The rig is held on by straps. Straps stretch when wet. Wet straps before attaching Fishing Rig.

Check straps during use and tighten as necessary.



The idea is to make two loops in the strap to secure the front and rear bar.

With the buckle upside down, run strap through the D-ring and under rod holder bar.

Run strap end back through D-ring.

Pull it tight around the bar.



Make a loop with end of the strap.

Run loop under front bar and through D-ring.

Pull on the loop so strap is taut between front and rod holder bars.



Bring the loop forward. Lift the bar and move the loop around the bar.

Do not twist the strap.



Pull loop tight around front bar. Use two hands. Use one hand to pull the end and the other to pull the strap from the rod holder bar.

Run the free end through the buckle and pull it tight.



Push the extra strap length through the rear of the buckle.

Repeat for the strap on the other side.

Caution! Fishing Rig raises center of gravity making boat more tippy. Stay centered and keep gear centered in boat.



Scotty Baitcaster Rod Holder

Install

To install rod holder in the mount, push stem into base until it clicks in.

Rotate or Remove

To rotate or remove rod holder from mount, press **white button** and pull rod holder upward.

Rod Angle

To adjust the rod angle, loosen the large **black knob** on the side until the teeth clear the grooves. Adjust angle and retighten.