



FW24 - FOOTWEAR



## THEO PRESENTS FALL 2024

---

A natural evolution of our premiere collection, Fall 2024 offers the same high-quality craftsmanship with added playfulness and whimsy. Inspired by feminine, fantastical works of art, including those of fashion photographer Tim Walker, each piece features elements of modern romance.

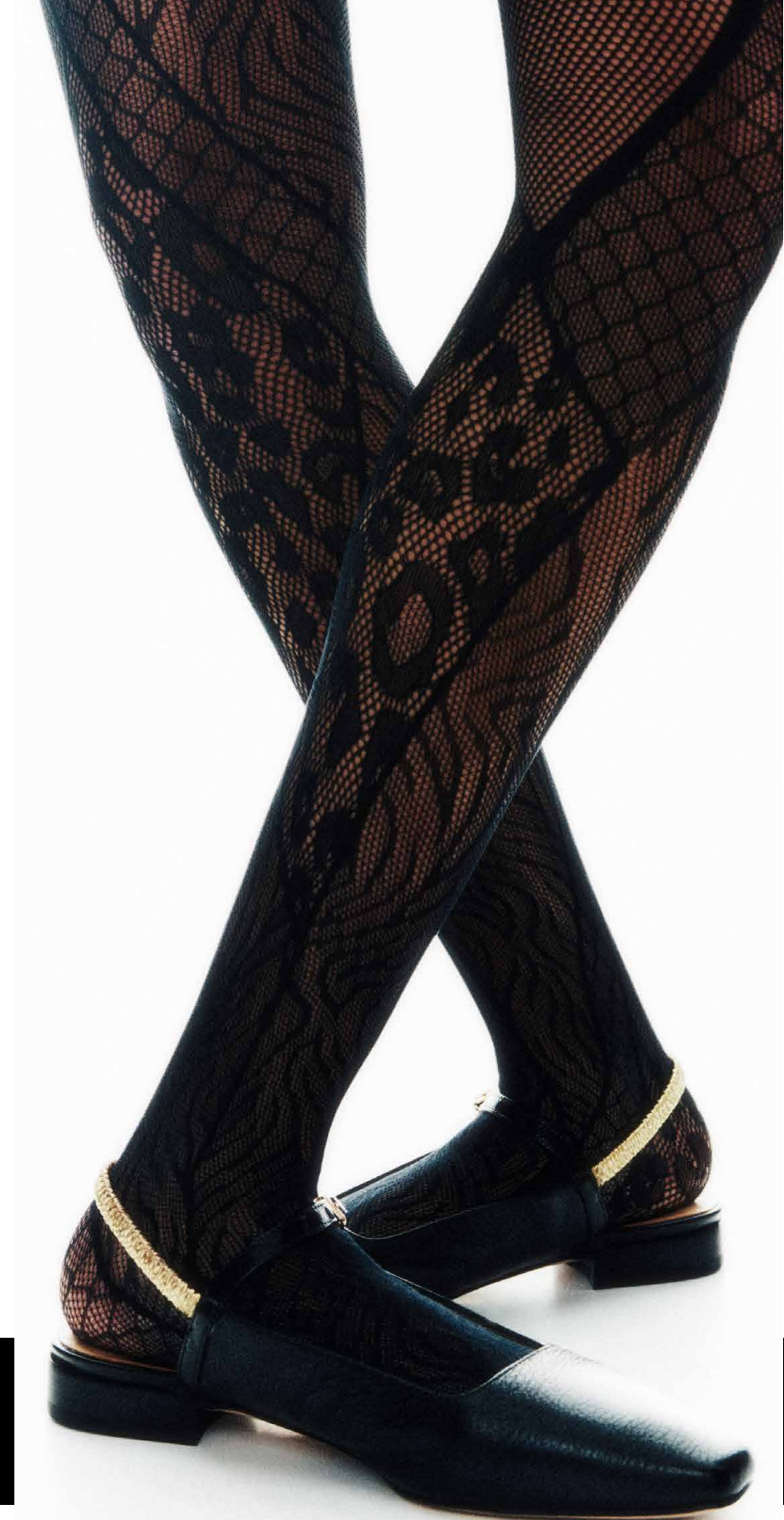
Ruffles, textured lace, rosettes, and piping offer soft, unexpected touches to structured cuts, while elongated hems enhance fluidity. Together, the 2024 line is an expression of contemporary luxury.

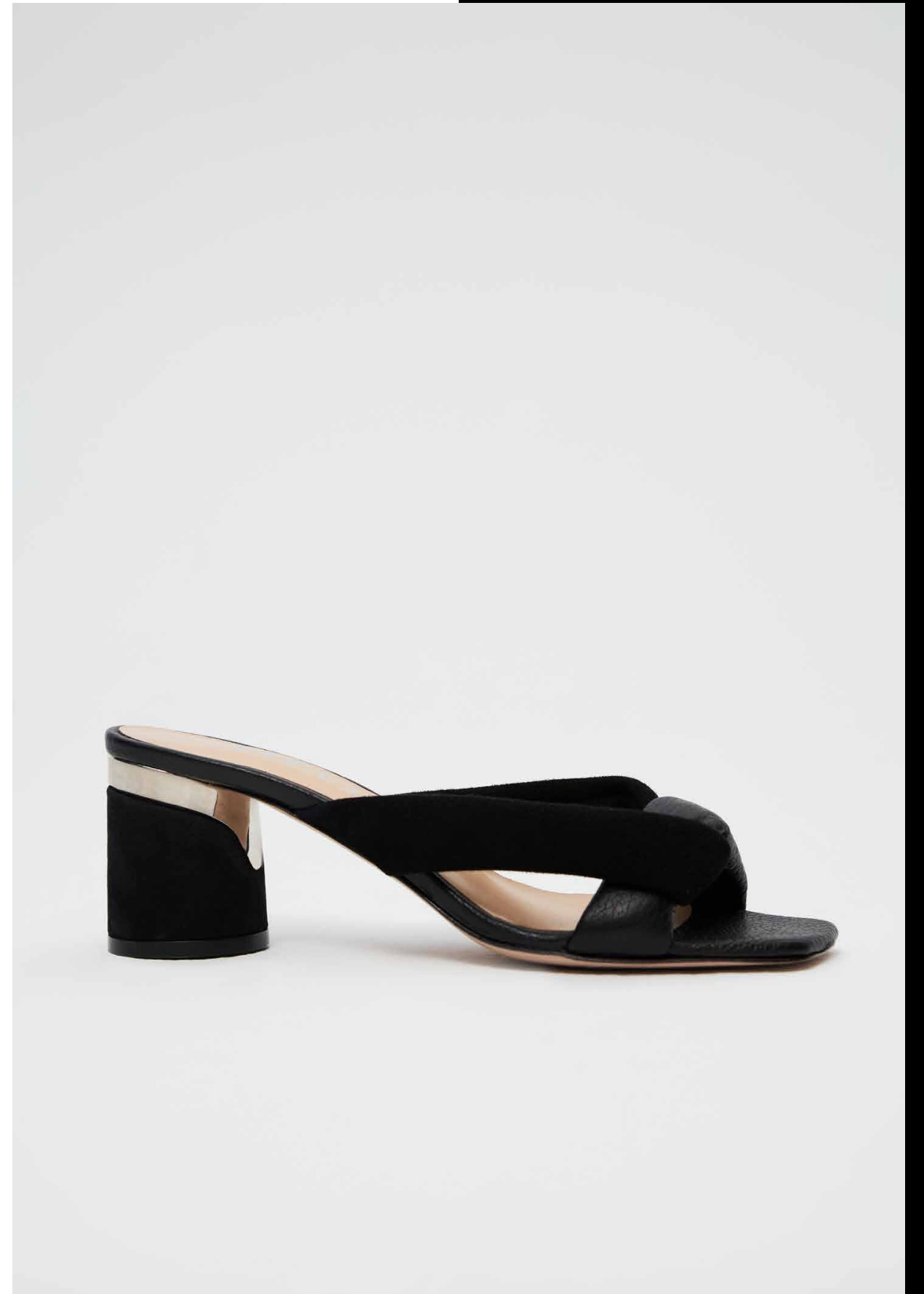
The collection's color gradation reflects the changing season, transitioning from reds, pinks and sunset orange to shades of brown to deeper blues, grays and greens. The accompanying capsule denim collection and outerwear pieces perfectly complement the clothing, shoes, and accessories to complete the look of fall chic.

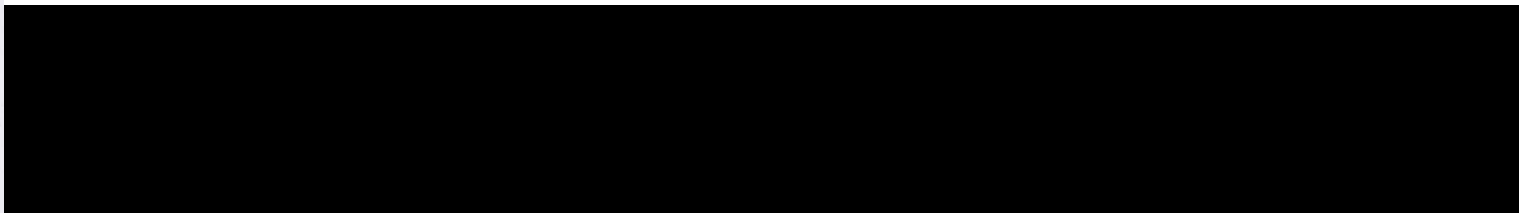
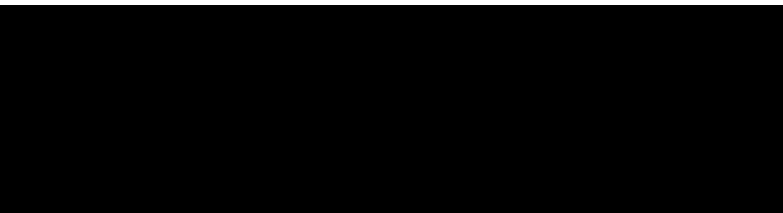
Fall 2024's three deliveries will begin shipping in June through September in-store and online.

[WWW.THEOTHELABEL.COM](http://WWW.THEOTHELABEL.COM)











THEO





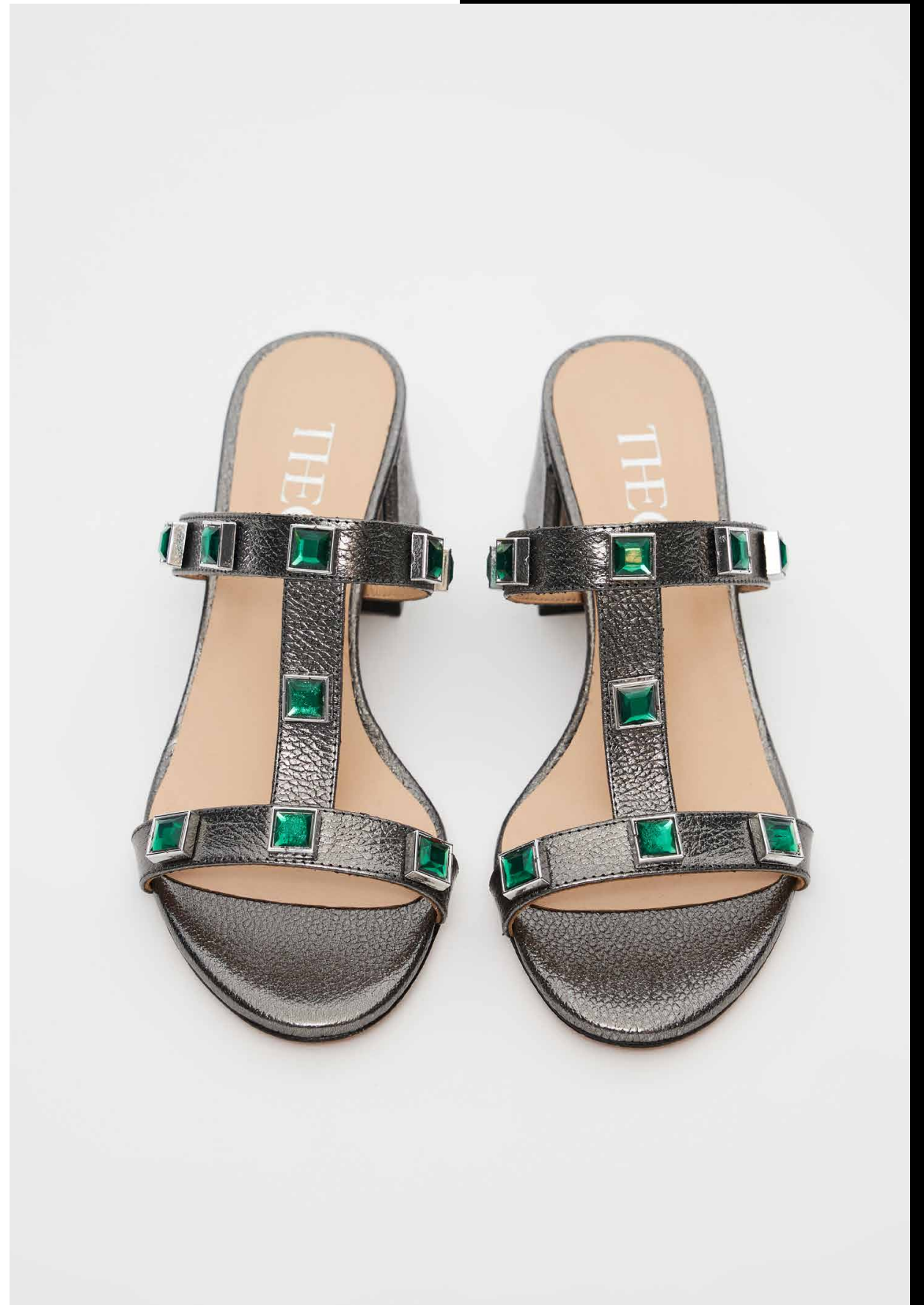






THEO







**THEO**



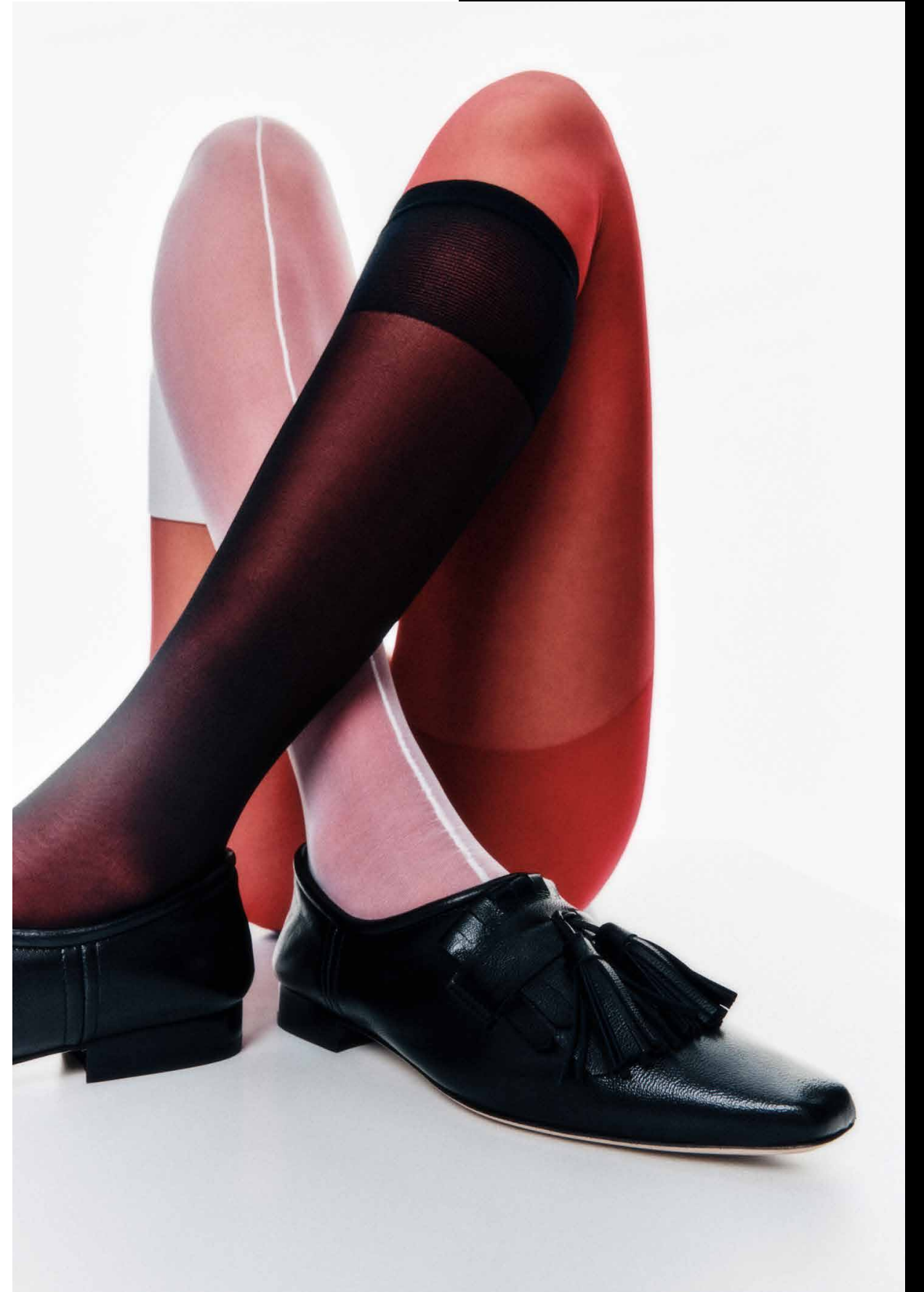














THEO













# THEO™

T H E L A B E L

WHOLESALE@THEOTHELABEL.COM  
WWW.THEOTHELABEL.COM