



## Yabby for 4G

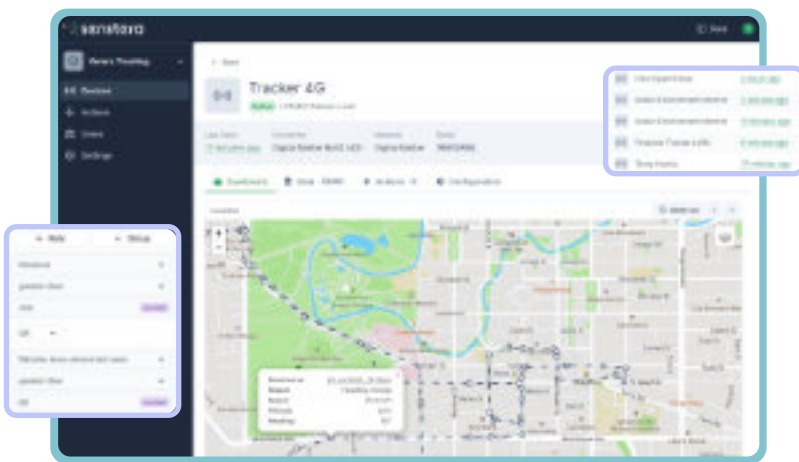
The Yabby is an ultra-rugged, long-life battery-powered GPS tracking device for asset tracking, management, theft recovery, and more on 4G LTE, LTE-M and NB-IoT networks.

Whether you are managing a fleet of vehicles, equipment or valuable assets, the Yabby can help you streamline operations, increase security and make data-driven decisions.

## Data Visualization Platform

Our monthly subscription includes access to the Senstera platform to provide real-time insights, analytics and data visualization with an easy-to-use dashboard.

The Senstera platform is a robust, secure, scalable, centralized data aggregation and management platform with a user-friendly Interface allowing you to remotely monitor your assets with easy to set up features like geofencing, email and/or TXT alerts (additional costs for some services may apply). Integrate your data with other business systems to better plan and enhance your compliance, reporting and overall workflows.



## Hardware Costs

Yabby3 4G \$315 plus 3 x AAA batteries \$27, Animal Collar Housing for Yabby \$35 (if required).

## Ongoing Costs

Choose a 5MB monthly subscription for asset tracking and vehicles traveling less than 1000 km per month or a 10 MB monthly subscription for high use cases. Monthly subscriptions include access to the Senstera platform.

**5MB** subscription  
from  
**\$12.50** per month  
or **\$150** annually

**10MB** subscription  
from  
**\$13.50** per month  
or **\$162** annually

## Use cases are...

### Asset Security & Recovery

Implement anti-theft measures by attaching the Yabby to valuable assets like generators, trailers and high-value equipment.

### Construction Equipment Tracking

Keep tabs on construction machinery and equipment to deter theft, monitor utilization and improve maintenance scheduling.

### Agricultural Equipment Monitoring

Track agricultural machinery, such as tractors and harvesters, to optimize field operations, ensure timely tasks and enhance productivity.

### Events & Exhibitions

Track valuable equipment and assets during events and exhibitions to prevent loss or theft and assist with asset recovery.

### Rental Equipment Management

Monitor the location and usage of rental equipment to enforce rental agreements and prevent unauthorized use.

### Insurance & Risk Management

Use the Yabby to assess risk, monitor high-value assets and determine insurance premiums based on asset usage patterns.

### Environmental Monitoring

Use the Yabby in environmental research to track pets, livestock or wildlife movements, monitor remote sites and study ecological patterns.

### Logistics & Supply Chain

Track shipments and cargo in real-time to enhance visibility, streamline logistics operations and ensure timely deliveries.

### Waste Management

Optimize waste collection routes and schedules by tracking waste collection vehicles and containers.

## Set-up & Installation

When you receive your order just follow the activation instructions to turn on your device, attach it to the asset you want to track and login to your Senstera account to monitor its location.

You can also set up geofencing, email and/or TXT alerts to advise you if a condition needs attention.