



# 2022+ TUNDRA DEBRIS SHIELD INSTALLATION INSTRUCTIONS, REAR

VER R230805

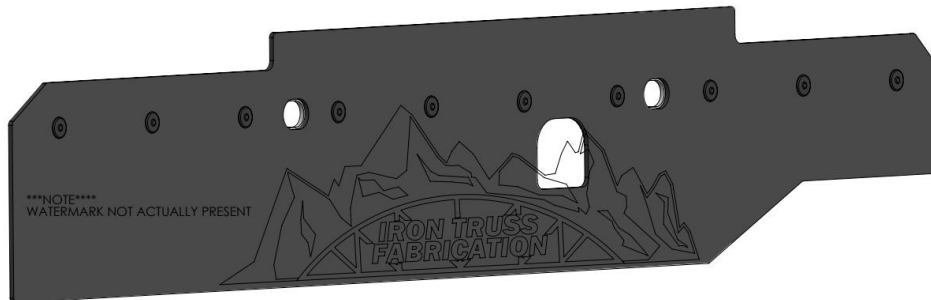
## REAR DEBRIS SHIELDS

**\*\*\*ENSURE YOUR VEHICLE IS SECURED IN PLACE AND THE PARKING BRAKE IS ENGAGED\*\*\***

**\*\*\*YOU DO NOT NEED TO REMOVE THE WHEELS FOR THIS INSTALLATION\*\*\***

**\*\*\*WORKING ON A MOTOR VEHICLE HAS INHERENT RISKS. PROCEED WITH CAUTION\*\*\***

1. Verify contents of package.
  - a. 2022+ Tundra Rear Debris Shield Parts/Materials Bag
    - i. 4 Rear Bed Frame Brackets W/ PEM
    - ii. 4 1/4 Flat Washers, Stainless Steel
    - iii. 4 M6 Hex Head Bolts, Stainless Steel
    - iv. 4 10-24 Button Head Screws, Stainless Steel, Black
    - v. 4 Fender Washers, Stainless Steel, Black
  - b. 1 Rear Debris Shield Passenger



- c. 1 Rear Debris Shield Driver



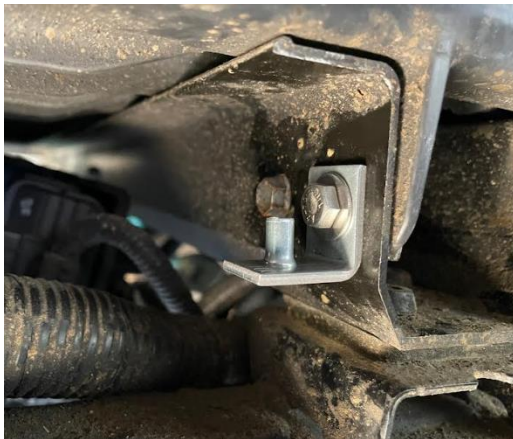
2. Locate the Rear Passenger Bed supports.



3. Remove the 2 front most bolts utilizing a 10mm socket or wrench.



4. Loosely Secure 1 Rear Bed Frame Brackets W/ PEM in place utilizing 1/4 Flat Washer and 1 M6 Hex Head Bolt onto the left most bed support. Repeat on the right most bed support.





# 2022+ TUNDRA DEBRIS SHIELD INSTALLATION INSTRUCTIONS, REAR

VER R230805

5. Rotate the Left Most Bracket up as shown and hand tighten the M6 Hex Bolt in place.



6. You might have to remove the rear bolt in order to get a 10mm wrench in place.



7. Rotate the Right most bracket up as shown and hand tighten the M6 Hex Bolt in place. This side is accessible from the bottom with a 10mm wrench.





# 2022+ TUNDRA DEBRIS SHIELD INSTALLATION INSTRUCTIONS, REAR

VER R230805

8. Feed the Rear Debris Shield Passenger into the wheel well.



9. Secure each side of the debris shield in place with 1 10-24 Screw and 1 Fender Washer.



10. Slide the front most side of the debris shield behind the bed rib as shown. Adjust the Debris shield until adequate fitment is achieved and hand tighten the 10-24 screws in place.





# 2022+ TUNDRA DEBRIS SHIELD INSTALLATION INSTRUCTIONS, REAR

VER R230805

11. The Rear Debris Shield Passenger is now installed. Move onto the Driver's side.



12. Locate the Rear Passenger Bed supports.



13. Remove the 2 front most bolts utilizing a 10mm socket or wrench.



14. Loosely Secure 1 Rear Bed Frame Brackets W/ PEM in place utilizing 1/4 Flat Washer and 1 M6 Hex Head Bolt onto the left most bed support. Repeat on the right most bed support.





# 2022+ TUNDRA DEBRIS SHIELD INSTALLATION INSTRUCTIONS, REAR

VER R230805

15. Rotate the brackets up and hand tighten the M6 Bolts in place.



16. Feed the Rear Debris Shield Driver into the wheel well.



17. Secure each side of the debris shield in place with 1 10-24 Screw and 1 Fender Washer.





# 2022+ TUNDRA DEBRIS SHIELD INSTALLATION INSTRUCTIONS, REAR

VER R230805

18. Slide the front most side of the debris shield behind the bed rib as shown. Adjust the Debris shield until adequate fitment is achieved and hand tighten the 10-24 screws in place.



19. The Rear Debris Shield Driver is now installed.