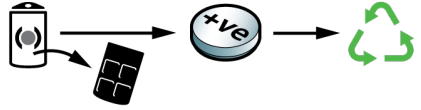


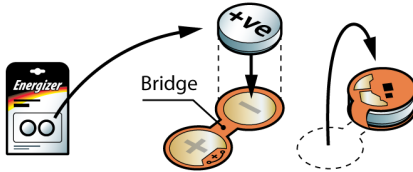
1 Check your fob is working correctly before installing **KEYSHIELD**. To replace battery, consult your owner's manual.



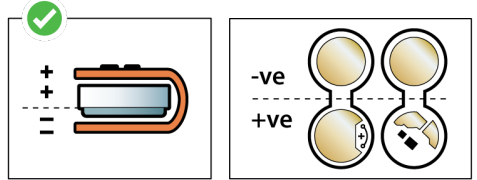
2 Open fob, discard old battery responsibly*



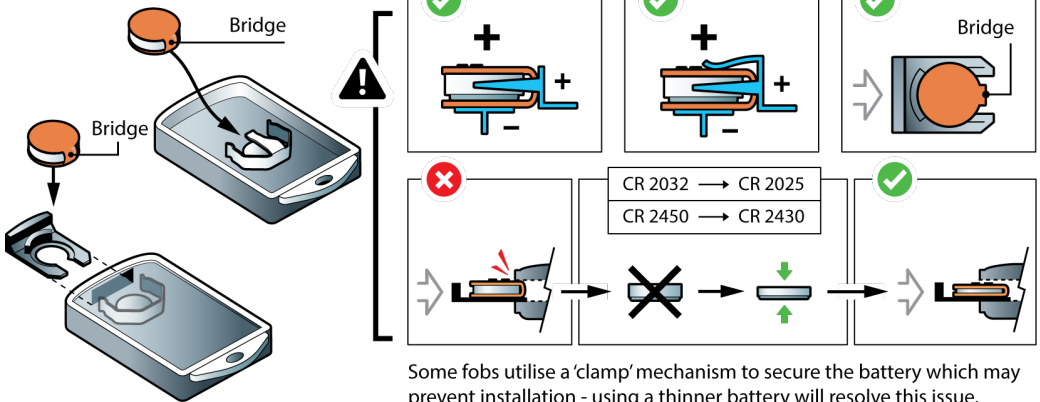
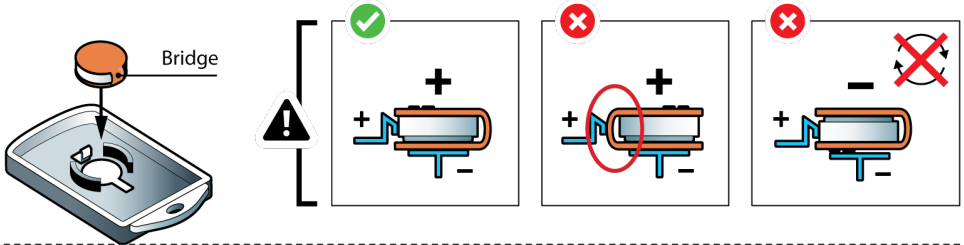
3 Wrap security sleeve around new battery* - match terminals with sleeve markings correctly



*We recommend a new battery for first time **KEYSHIELD** installation to ensure maximum performance



4 Fobs vary between car brands, with different methods used to secure the battery. Please take care not to force the battery & sleeve into the casing to avoid damage.



Some fobs utilise a 'clamp' mechanism to secure the battery which may prevent installation - using a thinner battery will resolve this issue.

5 Close fob



When you fob is stationary for 20 seconds, **KEYSHIELD** will automatically switch off battery power, disabling signal transmission. Moving the fob will instantly reactivate the battery power and restore full functionality.

How does KEYSHIELD work?

- **KEYSHIELD** wraps around your key fob battery and uses advanced motion sensor technology to detect periods of key fob inactivity to disable signal transmission, protecting against relay theft & key cloning.
- When stationary for 20 seconds, **KEYSHIELD** automatically disables your key fob battery power, preventing signal transmission. When motion is applied to the key fob, battery power is automatically re-activated, enabling signal to be emitted.

How do I fit KEYSHIELD?

- Consult your owner's manual to open your key fob and access & remove the coin cell battery. We recommend installing a new battery for maximum performance.
- Following the instructions overleaf, fold **KEYSHIELD** around your battery, ensuring correct orientation (Fig. 3), before carefully re-inserting both the battery & sleeve into your key fob.

How do I use KEYSHIELD?

- No further action is required – once installed, **KEYSHIELD** will work automatically, with no impact to your key fob functionality or external appearance.

'Key Not Detected' message appears when driving

- Some cars display this message if the key fob is not constantly detected - this may occur if the fob is stationary, and the signal has been disabled.
- Simply applying motion to the fob will reactivate signal transmission, allowing your vehicle to re-detect the key fob and remove the message

Symptom and Cause:	Corrective Action:
The fob does not work after fitting	Check the security sleeve is folded correctly around battery – sleeve circuitry should be facing outwards, above the positive terminal
Cause: Flat Fob Battery	Replace the current battery with a new one – this is recommended in all cases to ensure maximum performance
Cause: Battery or security sleeve not fitted correctly	Ensure the battery is orientated correctly – sleeve circuitry should be facing outwards, above the positive terminal Re-insert the battery & sleeve correctly & carefully into the fob – for most fobs, the positive terminal (and sleeve circuitry) should be facing outwards. Reference your owner's manual if required.
Cause: The security sleeve 'bridge' is preventing contact between battery and fob terminal	Check the battery is in contact with the fob terminals and is not blocked by the 'bridge'. Repositioning by a slight rotation will usually correct this.
Cause: The security sleeve has been damaged during fitting.	Do not excessively force the battery + sleeve into the fob casing as this may cause damage. If this occurred, a replacement will need to be re-ordered from our website.
Cause: The battery no longer fits into the fob with the sleeve attached	Some fobs utilise a 'clamp' mechanism to secure the battery which may prevent effective installation with the sleeve attached - using a thinner battery will resolve this issue. <ul style="list-style-type: none"> • CR2032 replace with CR2025 • CR2450 replace with CR2430