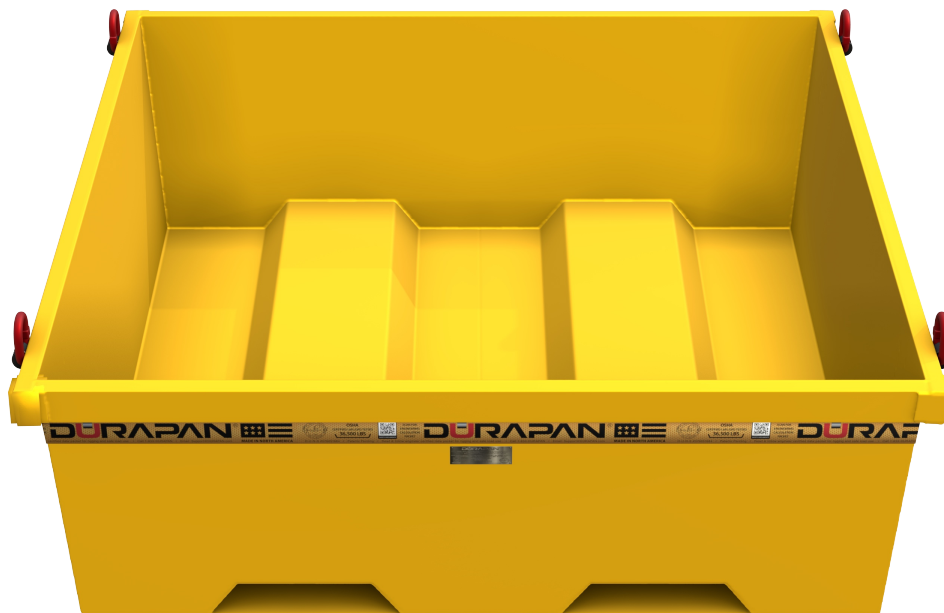




Structural Design Calculations for  
Consolidated Fabricators ConFab  
DURAPAN®

Devco Job # 15-641  
July 9, 2015

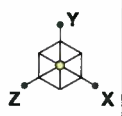


## Table of Contents

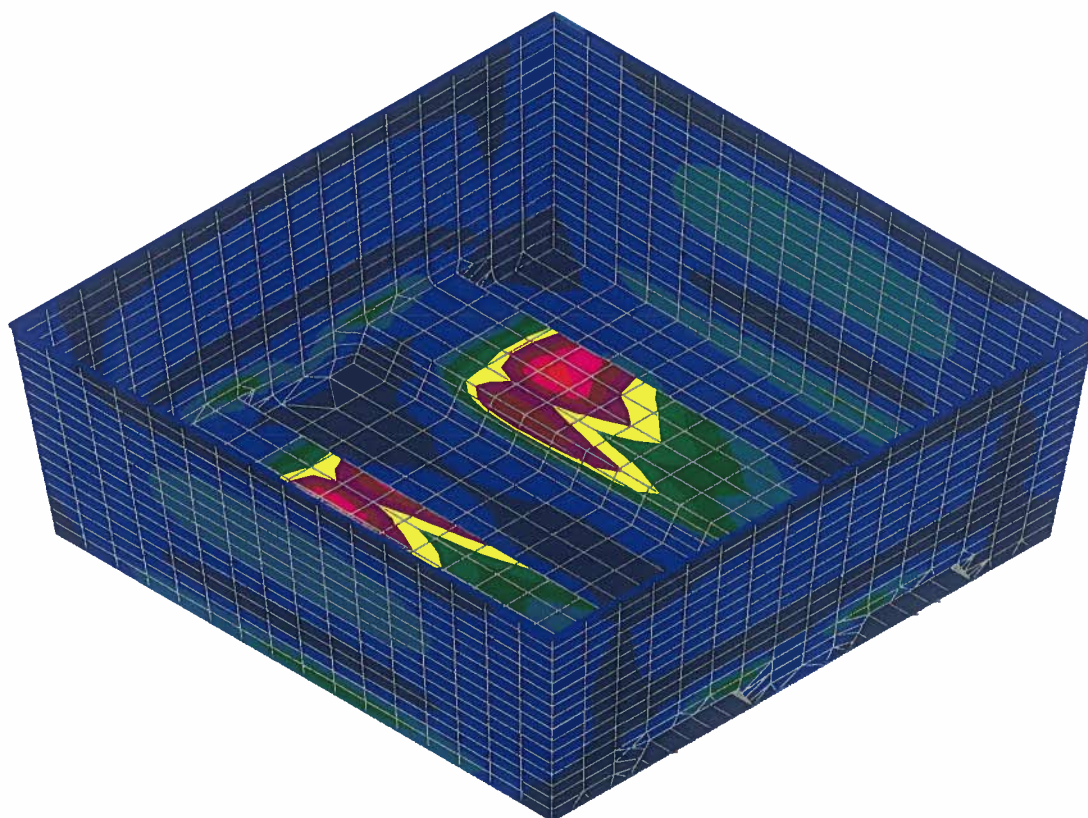
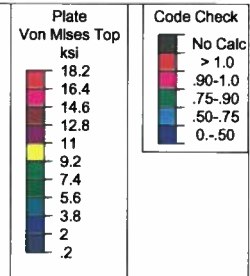
Structural Design Calculations for  
Consolidated Fabricators ConFab  
DURAPAN®

<u>Subject</u>	<u>Page</u>
727224PRO Forklift Pick	SK1-SK3
727224PRO Single Pick	SK4-SK9
727224PRO Spreader Bar Pick	SK10-SK12



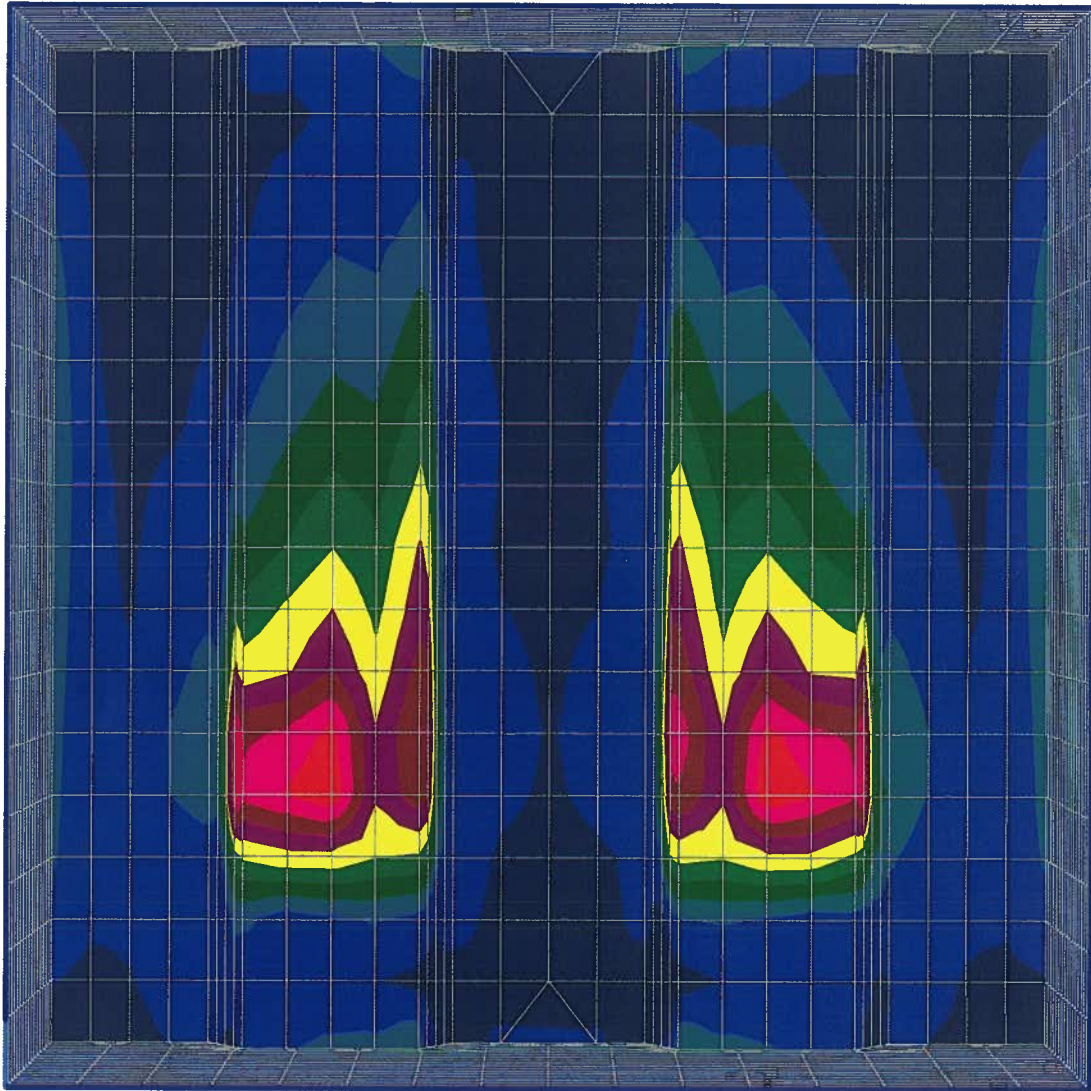
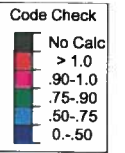
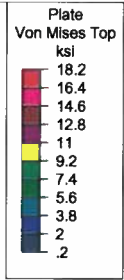


LIVE LOAD = 16,500lb



Results for LC 1, DL + Live Load

Devco	72724PRO Forklift	SK - 1
B.J.P.		July 9, 2015 at 2:53 PM
15-641		931 Forklift.r3d



Results for LC 1, DL + Live Load

Devco

B.J.P.

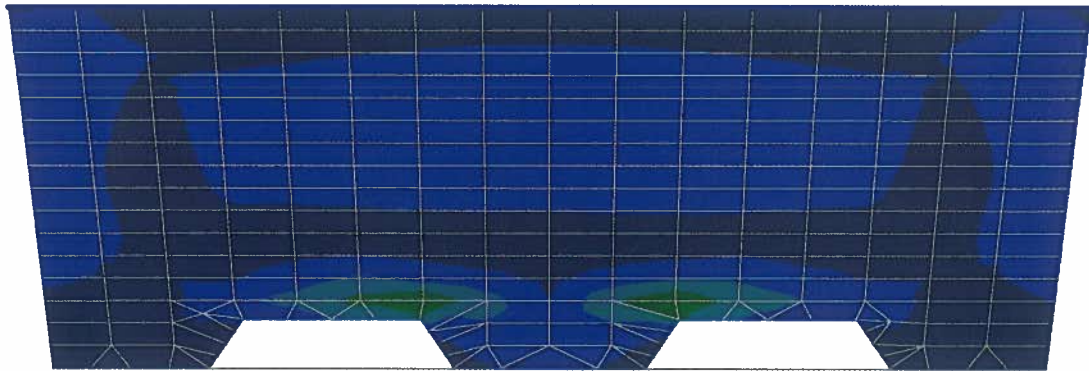
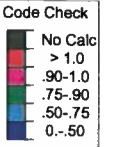
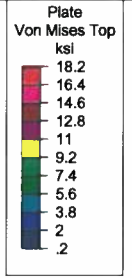
15-641

72724PRO Forklift

SK - 2

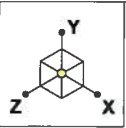
July 9, 2015 at 2:53 PM

931 Forklift.r3d

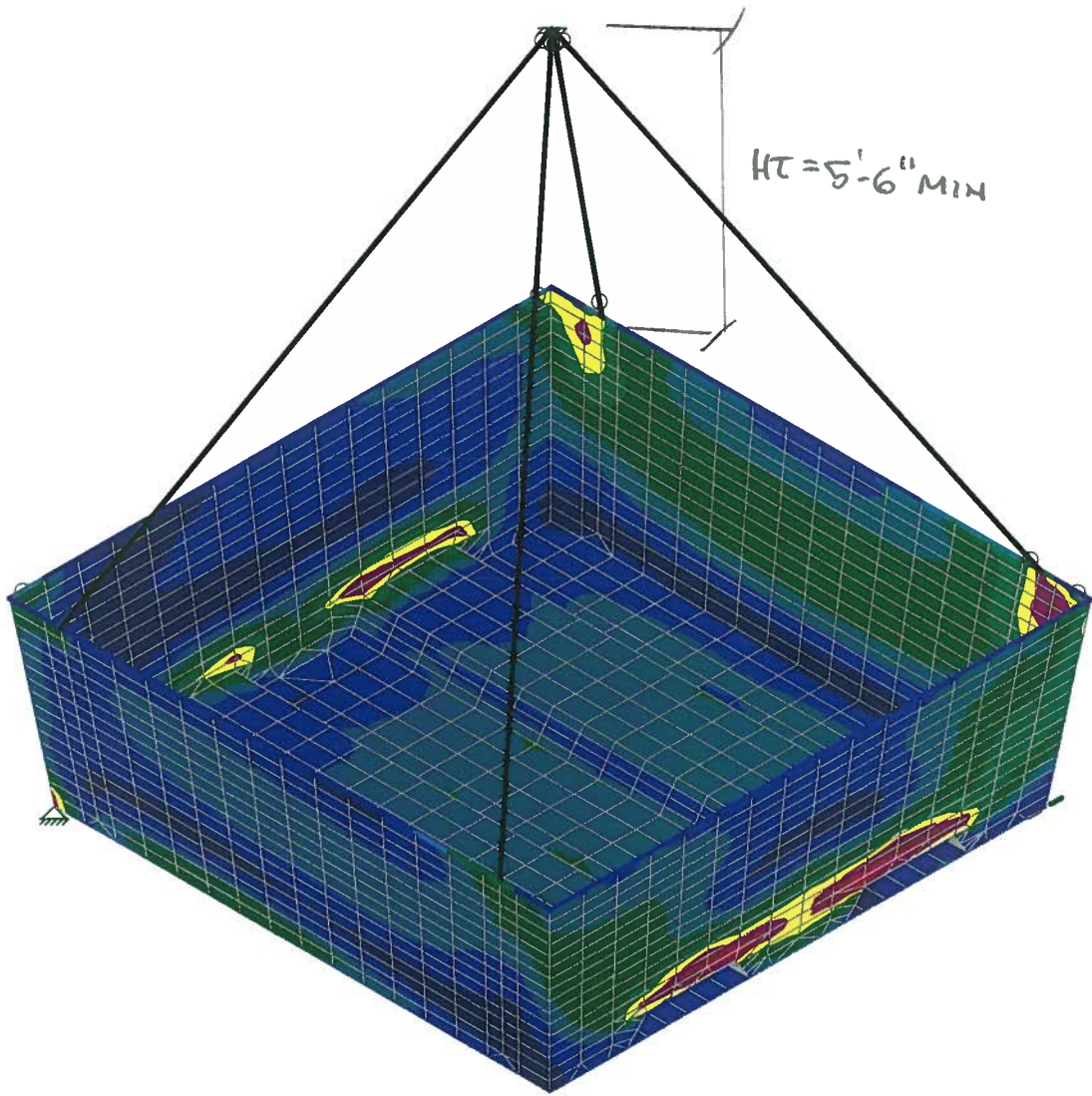
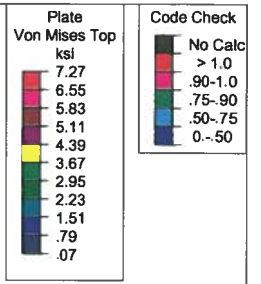


Results for LC 1, DL + Live Load

Devco	727224PRO Forklift	SK - 3
B.J.P.		July 9, 2015 at 2:53 PM
15-641		931 Forklift.r3d

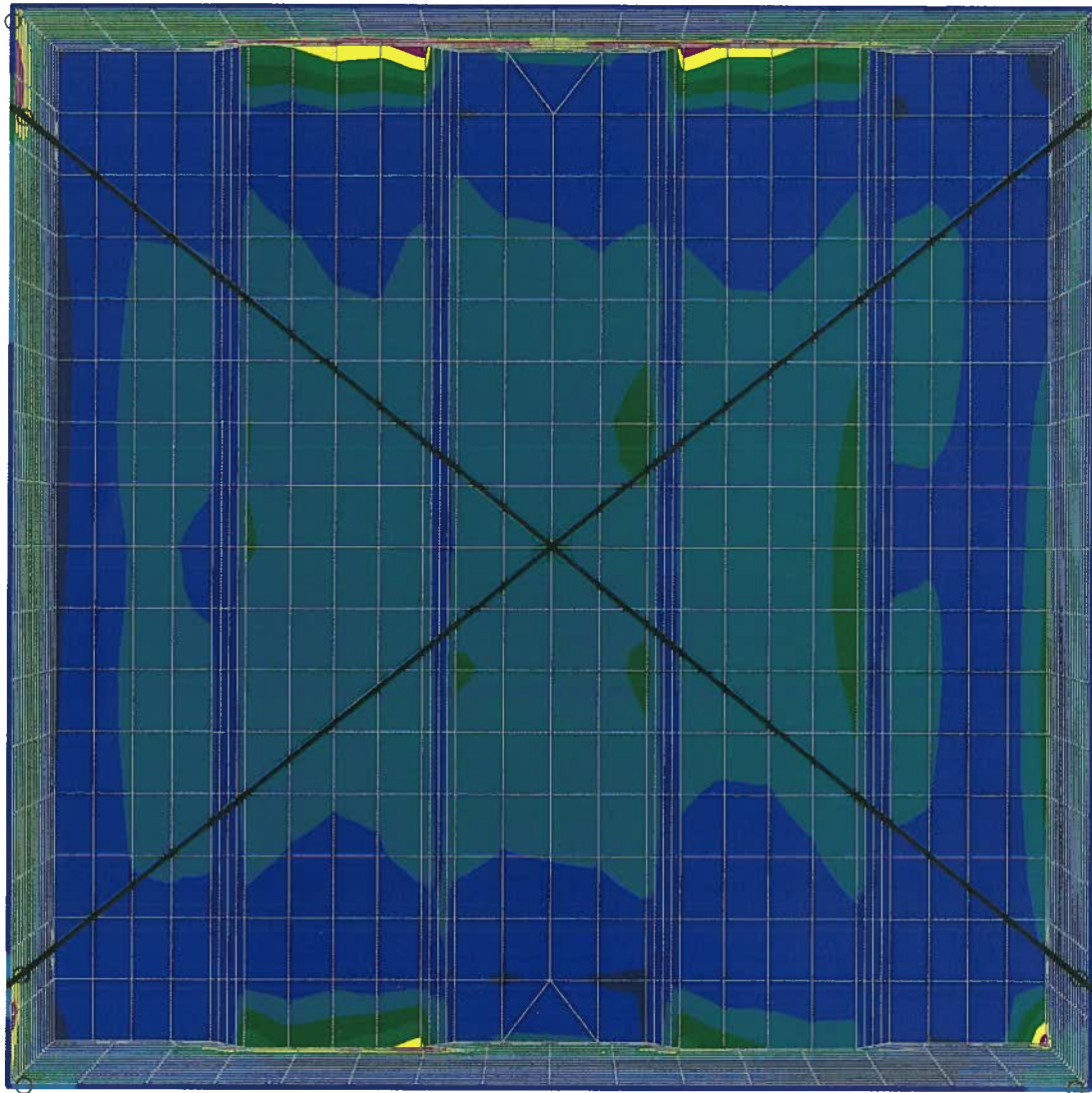
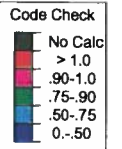
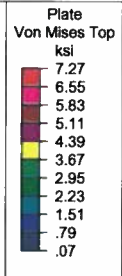


LIVE LOAD = 6,300lb



Results for LC 1, DL + Live Load

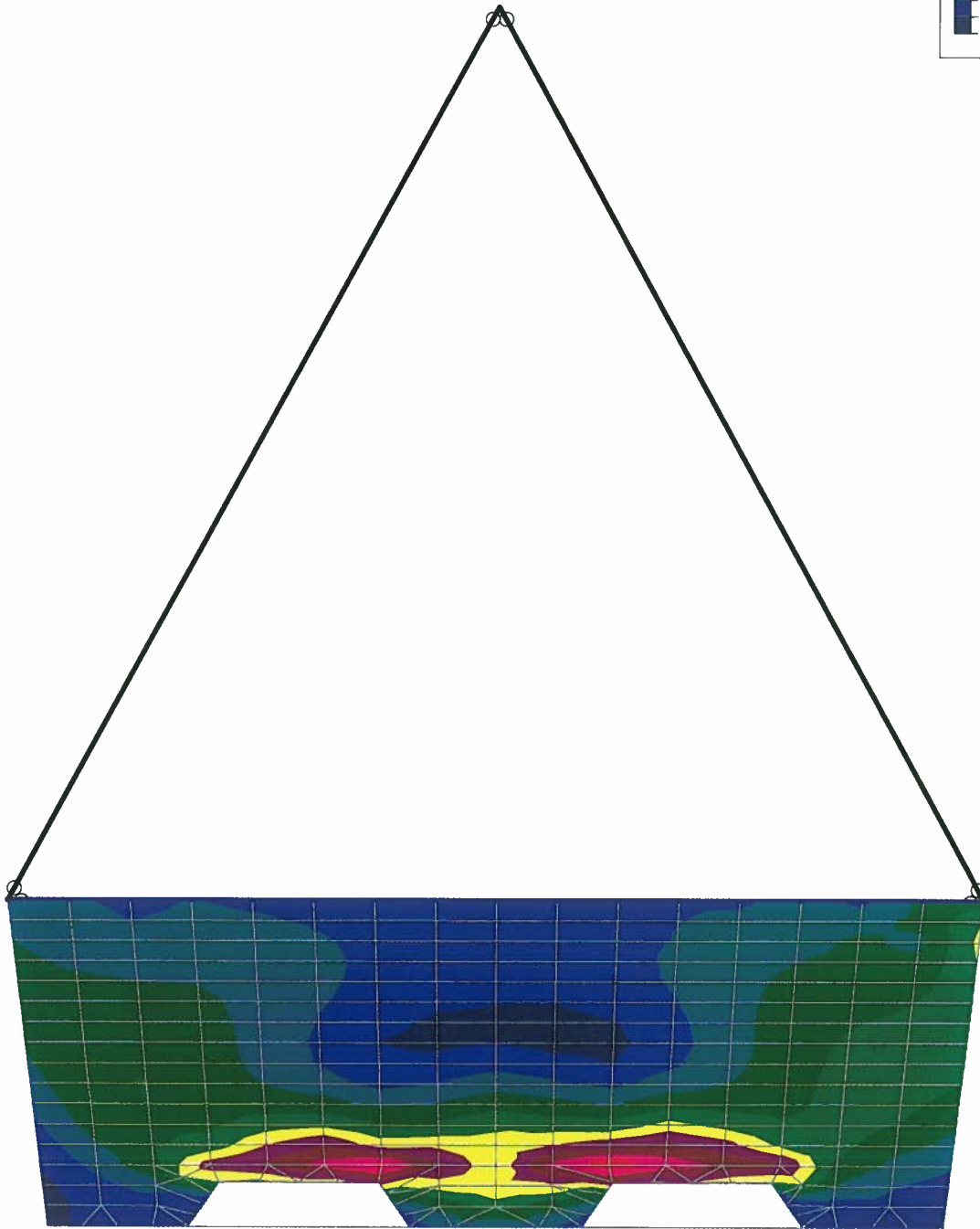
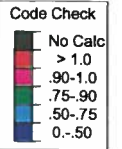
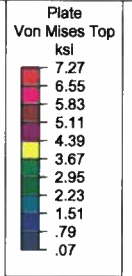
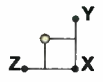
Devco	727224PRO Single Pick Point	SK - 4
B.J.P.		July 9, 2015 at 3:01 PM
15-641		931 Single Pick 5ft - 6in HT.r3d



Results for LC 1, DL + Live Load

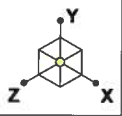
Devco	727224PRO Single Pick Point	SK - 5
B.J.P.		July 9, 2015 at 3:01 PM
15-641		931 Single Pick 5ft - 6in HT.r3d



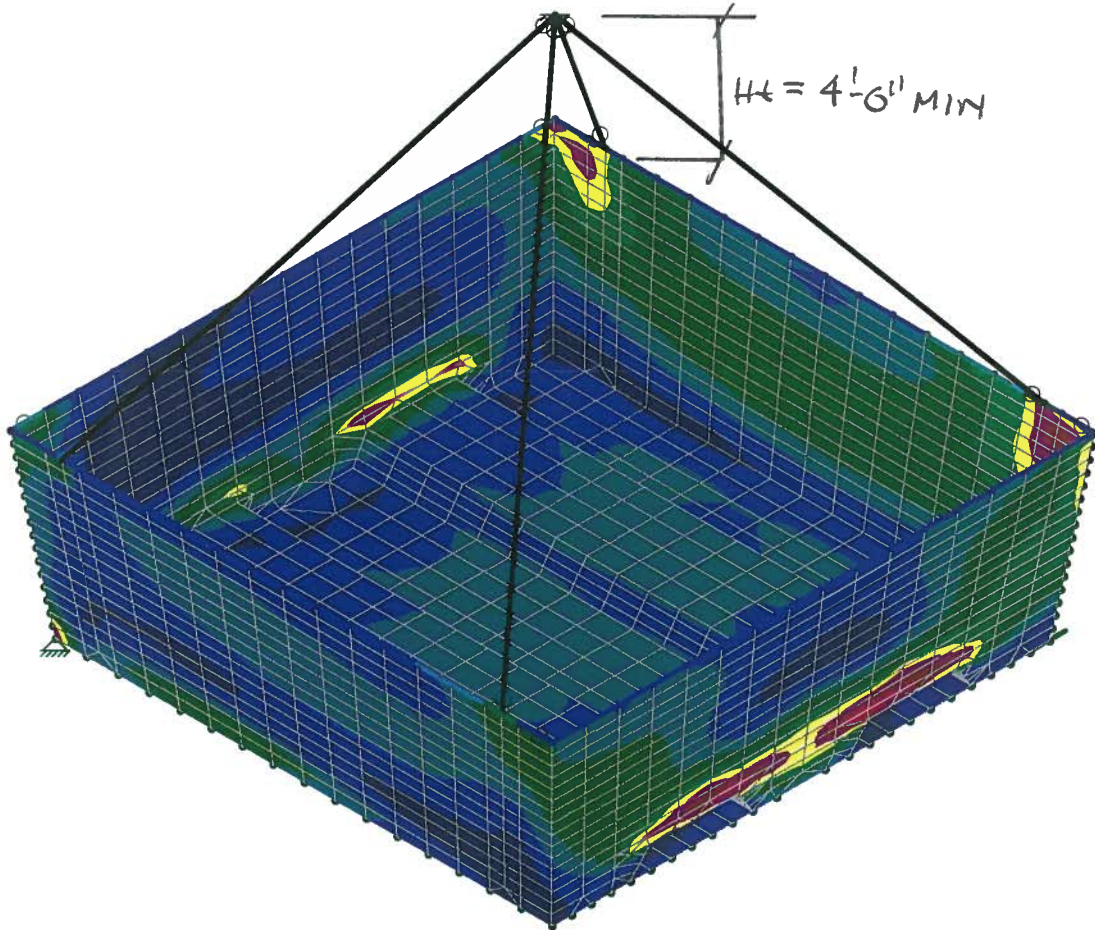
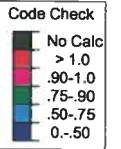
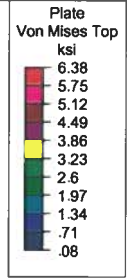


Results for LC 1, DL + Live Load

Devco	727224PRO Single Pick Point	SK - 6
B.J.P.		July 9, 2015 at 3:02 PM
15-641		931 Single Pick 5ft - 6in HT.r3d

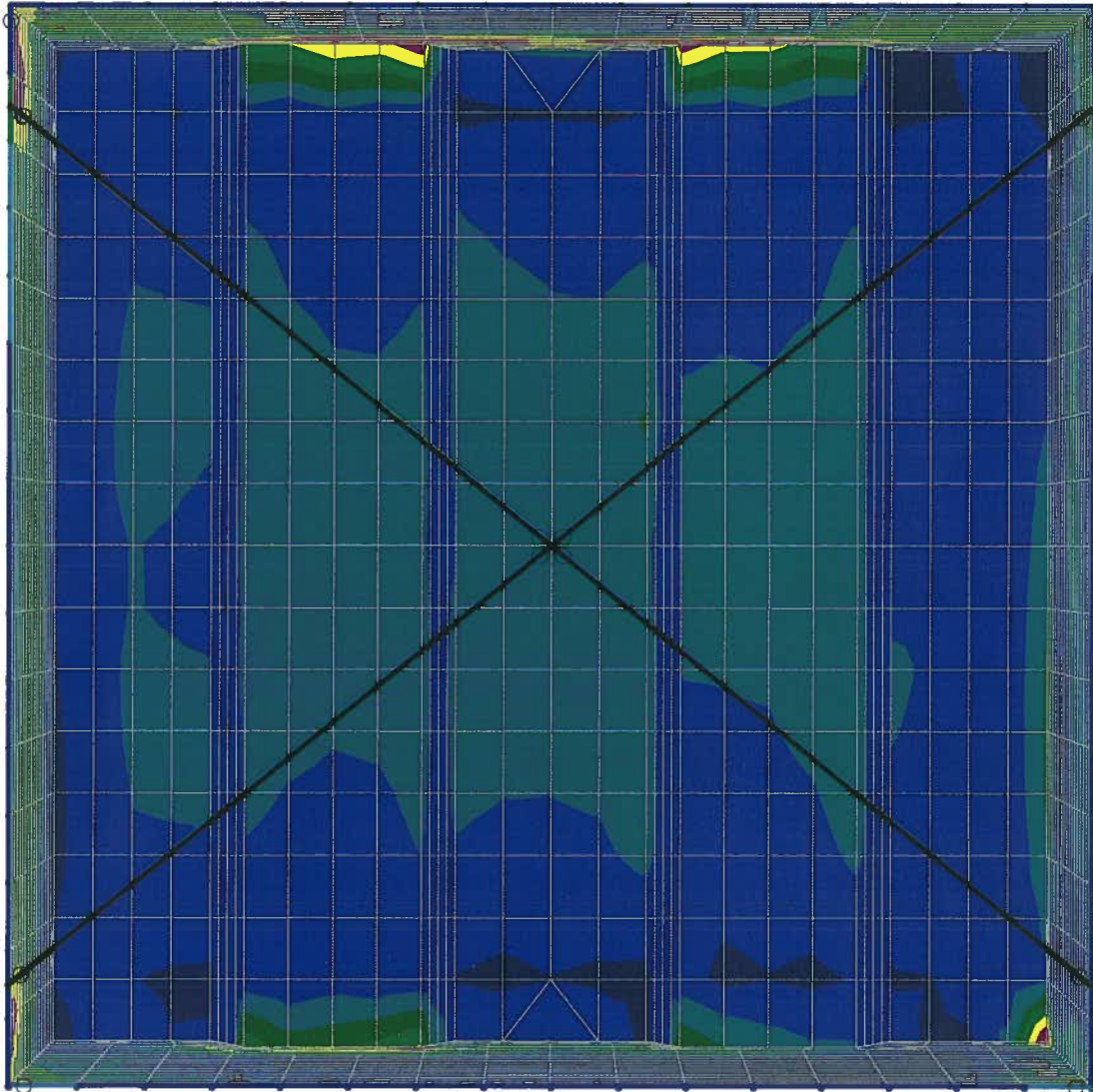
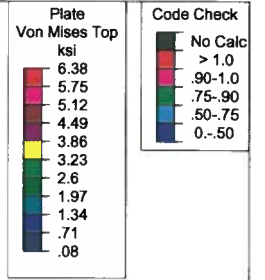


LIVE LOAD = 4,700lb



Results for LC 1, DL + Live Load

Devco	.727224PRO Single Pick Point	SK - 7
B.J.P.		July 9, 2015 at 3:04 PM
15-641		931 Single Pick 5ft - 6in HT.r3d



Results for LC 1, DL + Live Load

Devco

B.J.P.

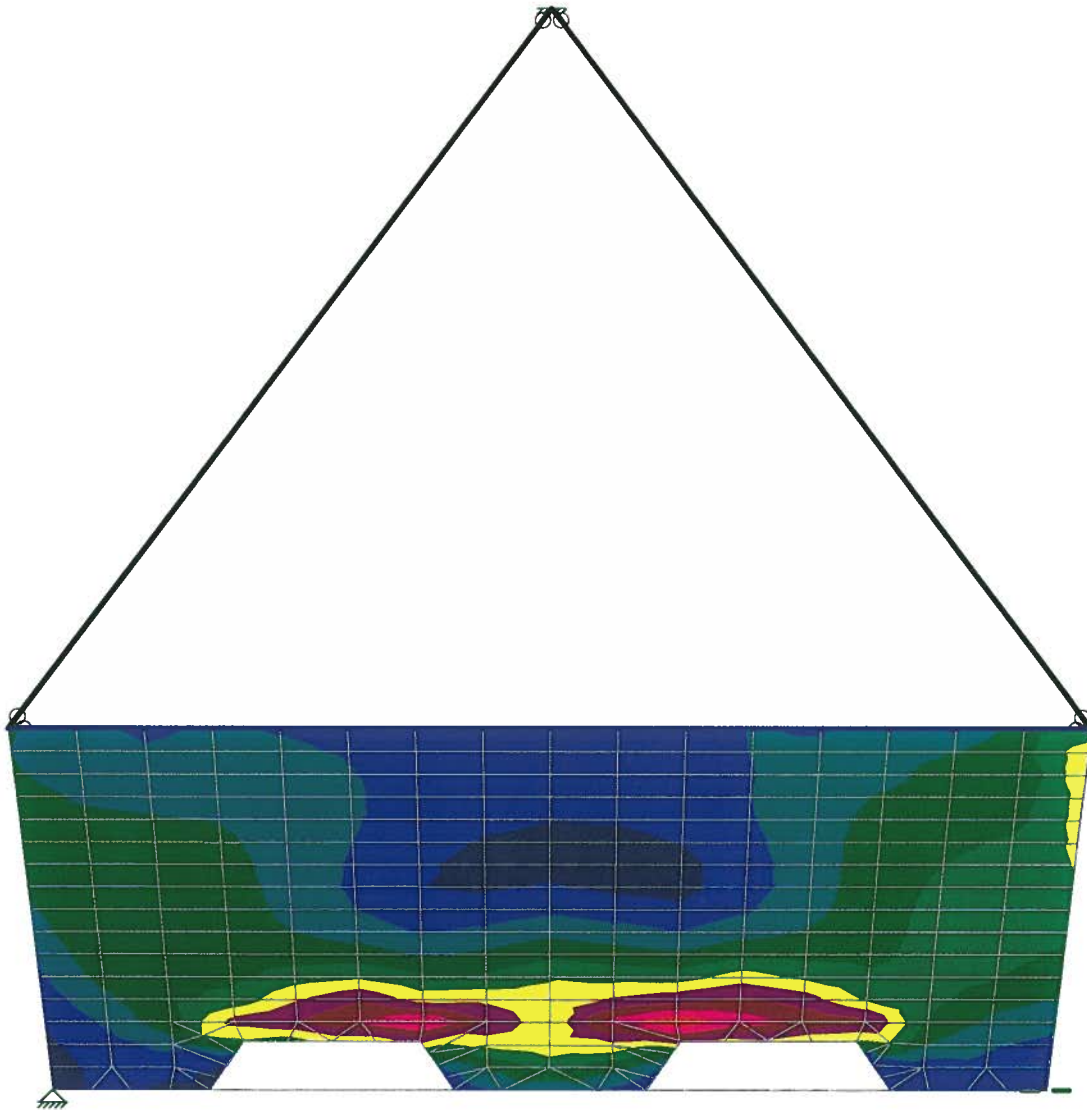
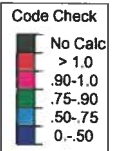
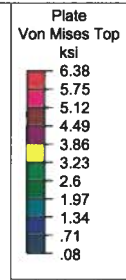
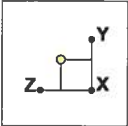
15-641

727224PRO Single Pick Point

SK - 8

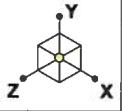
July 9, 2015 at 3:04 PM

931 Single Pick 5ft - 6in HT.r3d

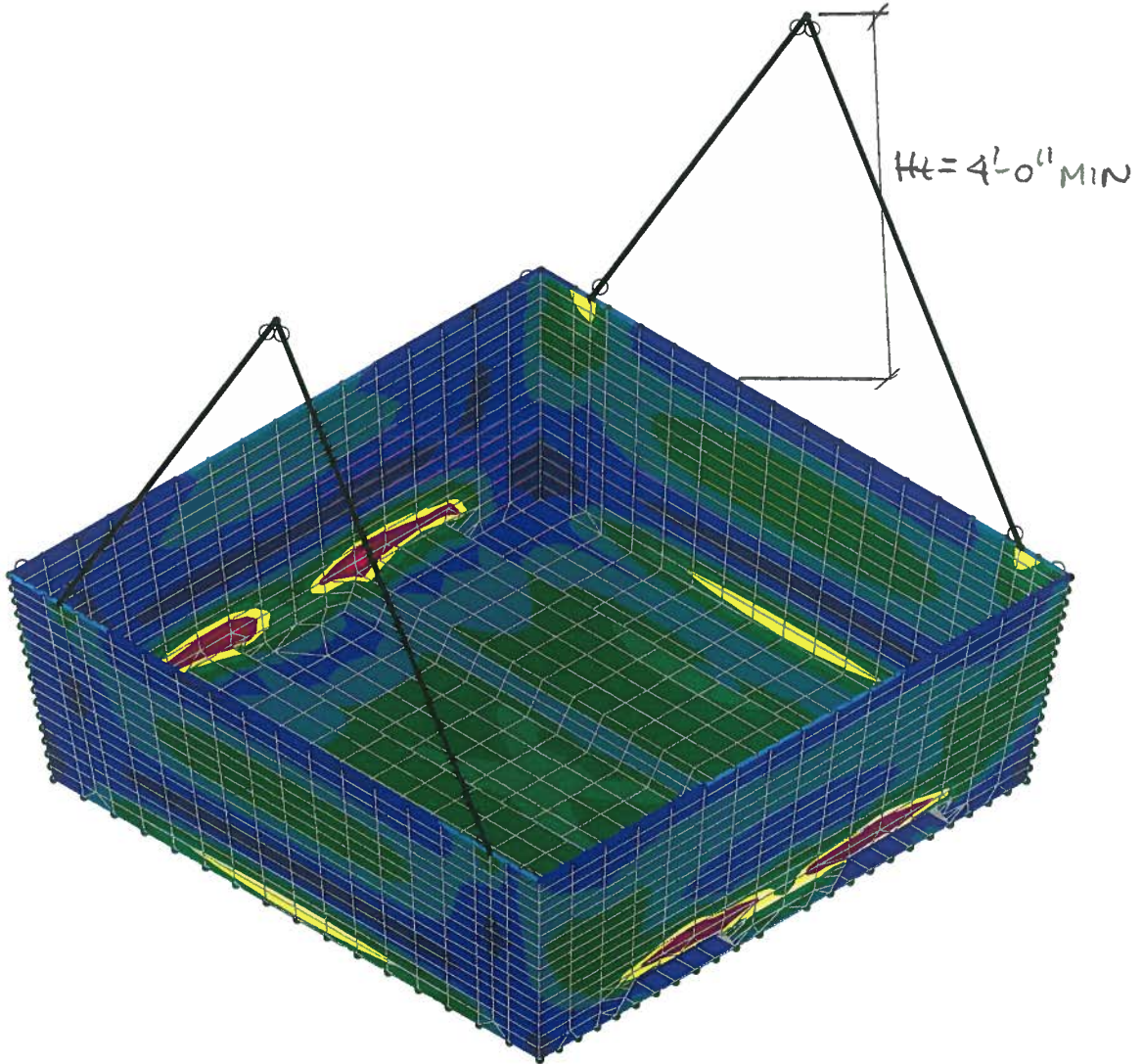
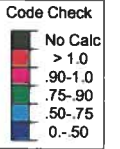
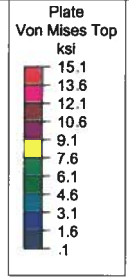


Results for LC 1, DL + Live Load

Devco	727224PRO Single Pick Point	SK - 9
B.J.P.		July 9, 2015 at 3:05 PM
15-641		931 Single Pick 5ft - 6in HT.r3d

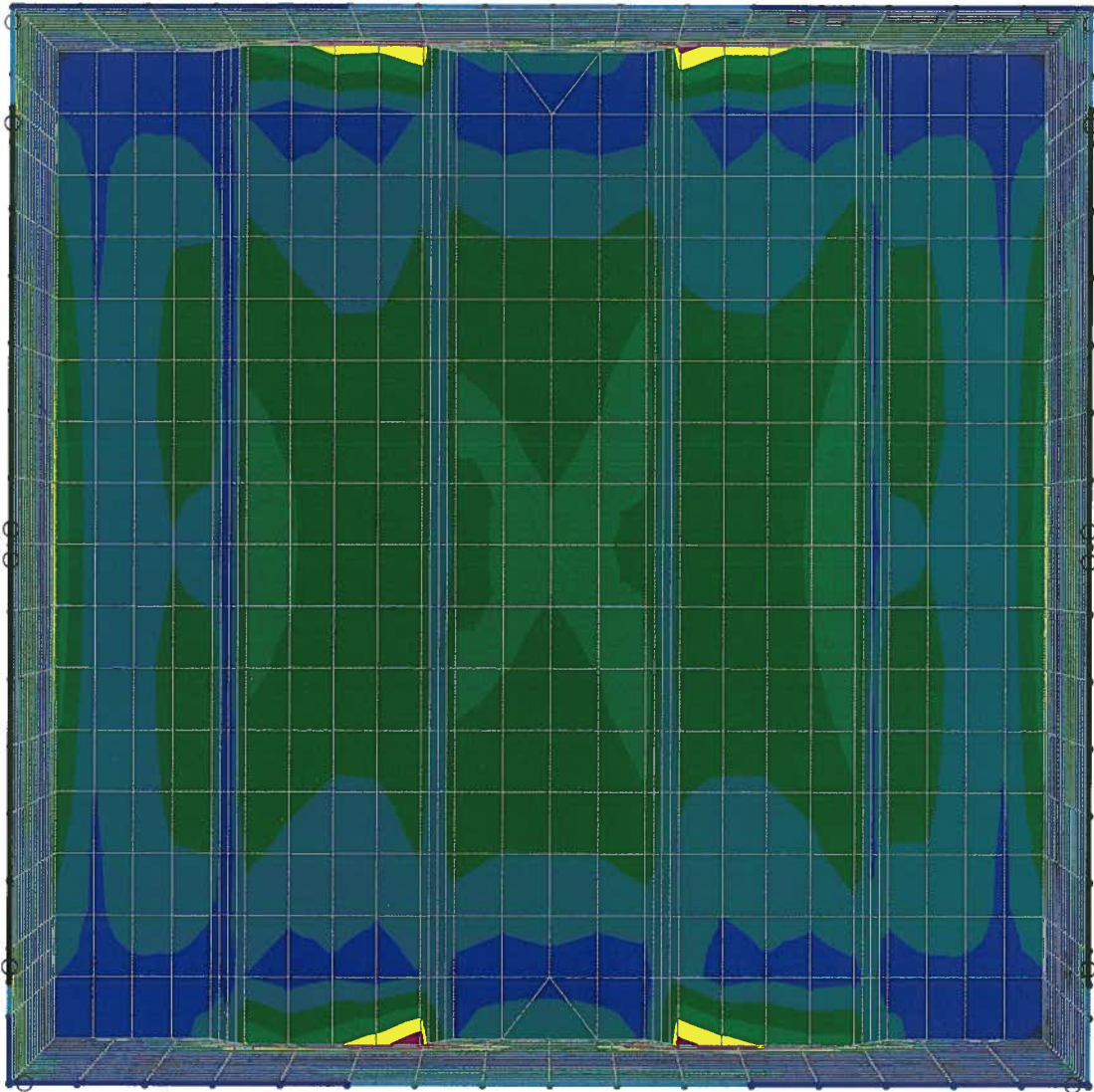
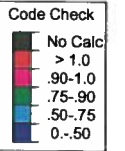
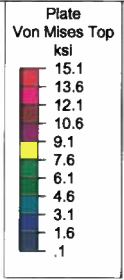


LIVE LOAD = 19,000lb



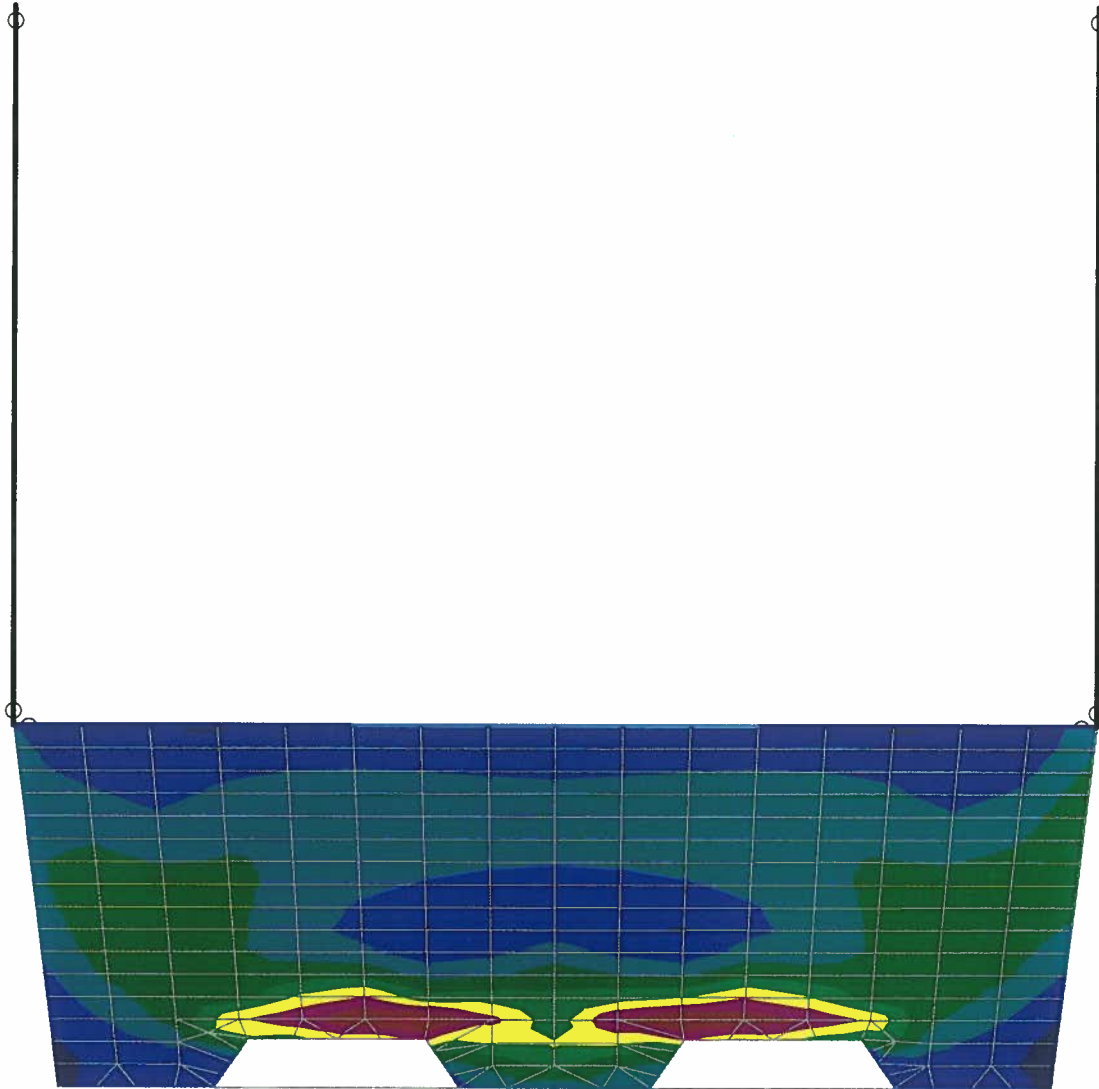
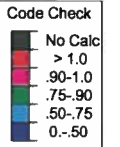
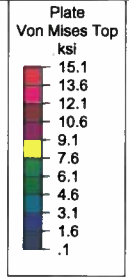
Results for LC 1, DL + Live Load

		SK - 10
	727224PRO Spreader Bar	July 9, 2015 at 4:20 PM
		931 Spreader Bar.r3d



Results for LC 1, DL + Live Load

		SK - 11
	.727224PRO Spreader Bar	July 9, 2015 at 4:20 PM
		931 Spreader Bar.r3d



Results for LC 1, DL + Live Load

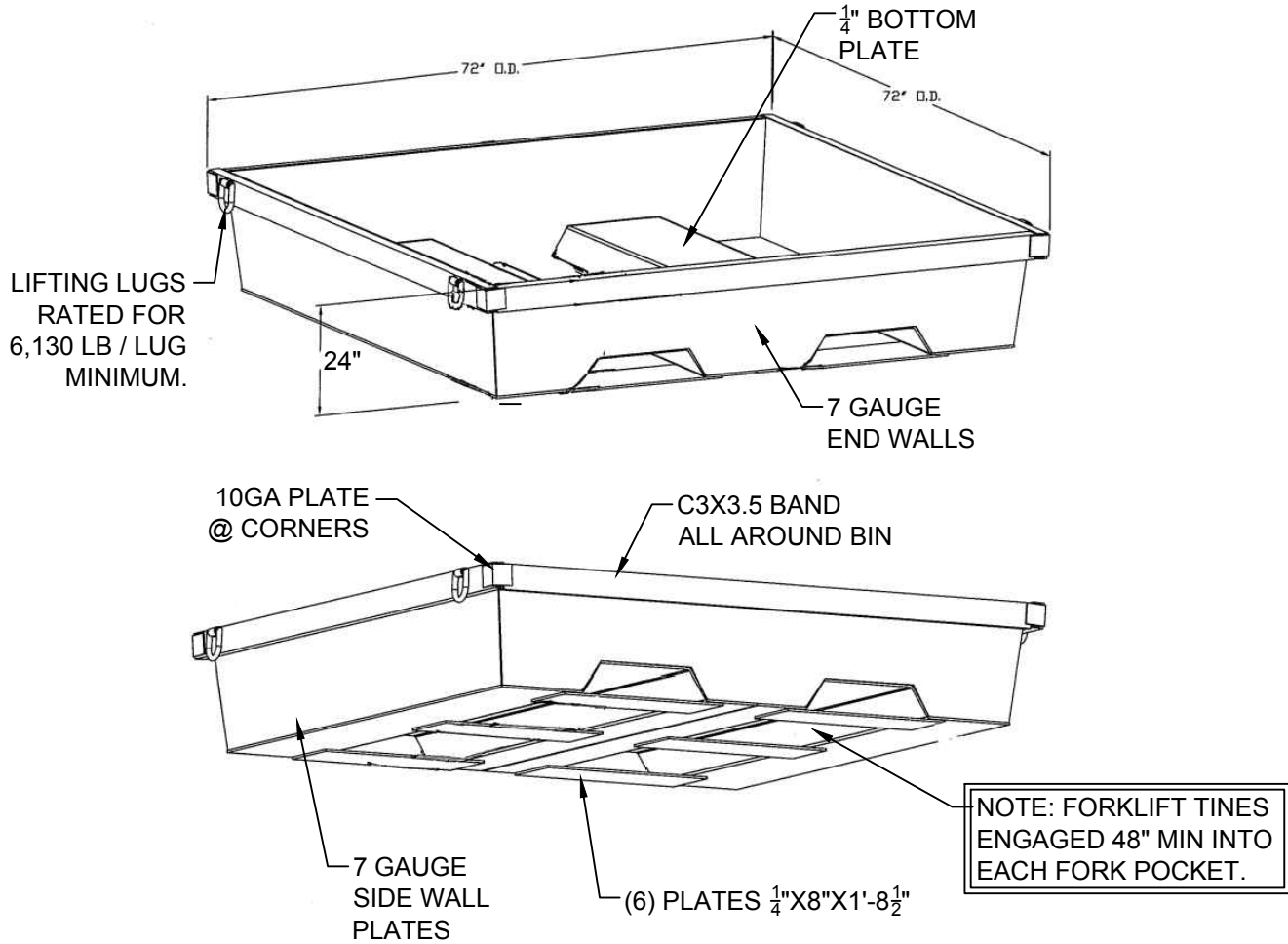
	727224PRO Spreader Bar	SK - 12
		July 9, 2015 at 4:20 PM
		931 Spreader Bar.r3d

PROJECT: CONCRETE TRAY LIFTING RATING

PROJECT NO: 15-641

DESIGN: B.J.P.

DATE: 7/09/15



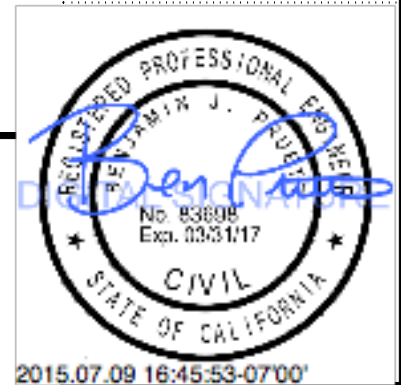
TARE WEIGHT = 833LB  
ALLOWABLE LIVE LOAD W/ FORKLIFT = 16,500LB

727224PRO

LIFTING CAPACITY WITH FORKLIFT

1

SCALE: N.T.S.



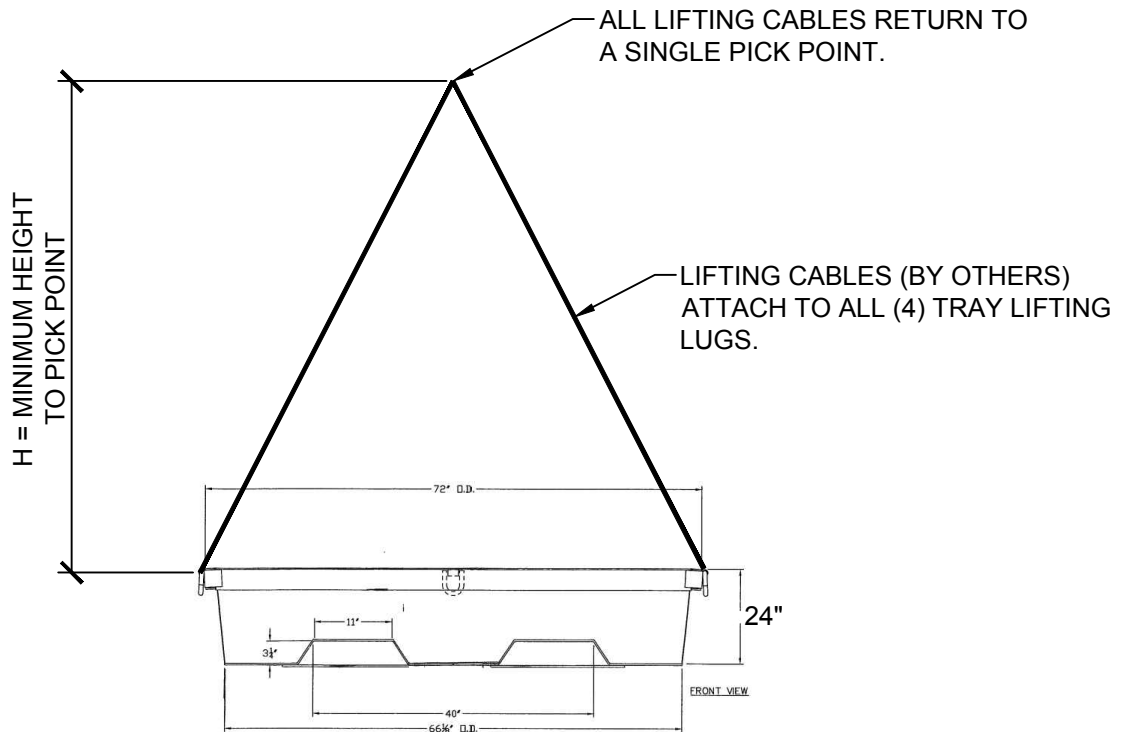


PROJECT: CONCRETE TRAY LIFTING RATING

PROJECT NO: 15-641

DESIGN: B.J.P.

DATE: 7/09/15



TARE WEIGHT = 833LB  
ALLOWABLE LIVE LOAD = 6,300LB @ H = 5'-6" MIN  
ALLOWABLE LIVE LOAD = 4,700LB @ H = 4'-0" MIN

727224PRO  
LIFTING CAPACITY WITH FORKLIFT

SCALE: N.T.S.



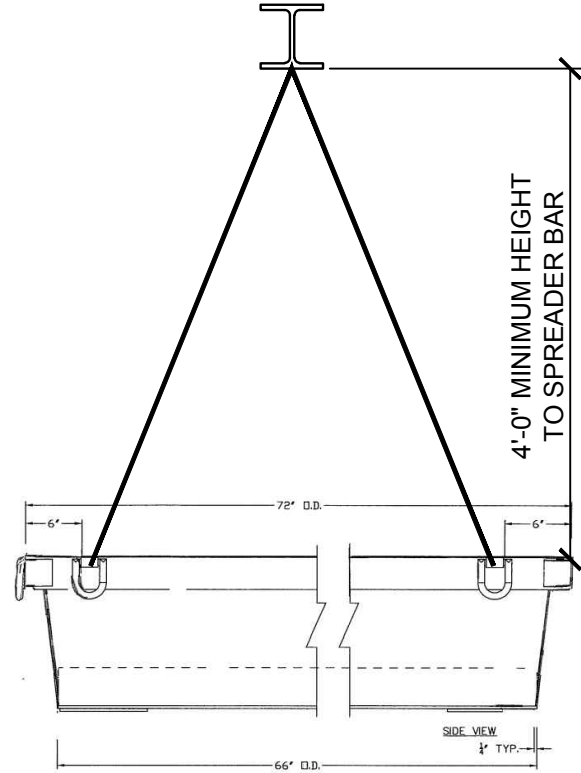
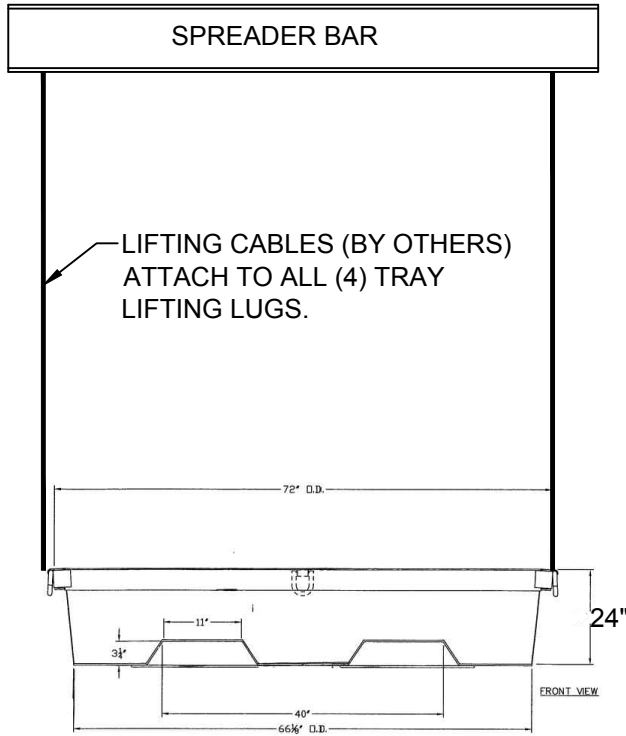
FILE: J:\15\600\15641 Concrete Nestable Trays\931\931 - SK8 -SINGLE PICK POINT.dwg 7/9/2015 4:04 PM - Ben

PROJECT: CONCRETE TRAY LIFTING RATING

PROJECT NO: 15-641

DESIGN: B.J.P.

DATE: 7/09/15

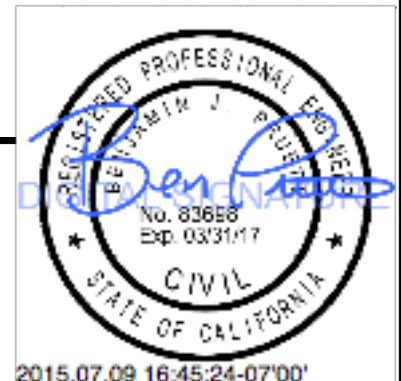


TARE WEIGHT = 833LB  
 ALLOWABLE LIVE LOAD = 19,000LB

1

727224PRO  
 LIFTING CAPACITY WITH FORKLIFT

SCALE: N.T.S.



2015.07.09 16:45:24-07'00'

FILE: J:\15\600\15641 Concrete Nestable Trays\931\931 - SK9 -SPREADER BAR.dwg 7/9/2015 4:00 PM - Ben