



Structural Design Calculations for  
Consolidated Fabricators ConFab  
DURAPAN®

Devco Job # 15-641  
June 3, 2015



## Table of Contents

Structural Design Calculations for  
Consolidated Fabricators ConFab  
DURAPAN®

<u>Subject</u>	<u>Page</u>
935 - Forklift Pick	SK1-SK3
935 - Single Pick Point w/ 4ft Height	SK4-SK6
935 - Single Pick Point w/ 5.5ft Height	SK7-SK8
927 - Forklift Pick	SK10-SK12
927 - Single Pick Point w/ 4ft Height	SK13-SK15
927 - Single Pick Point w/ 5.5ft Height	SK16-SK18
935 - Spreader Bar Pick	SK19-SK21
927 - Spreader Bar Pick	SK22-SK24

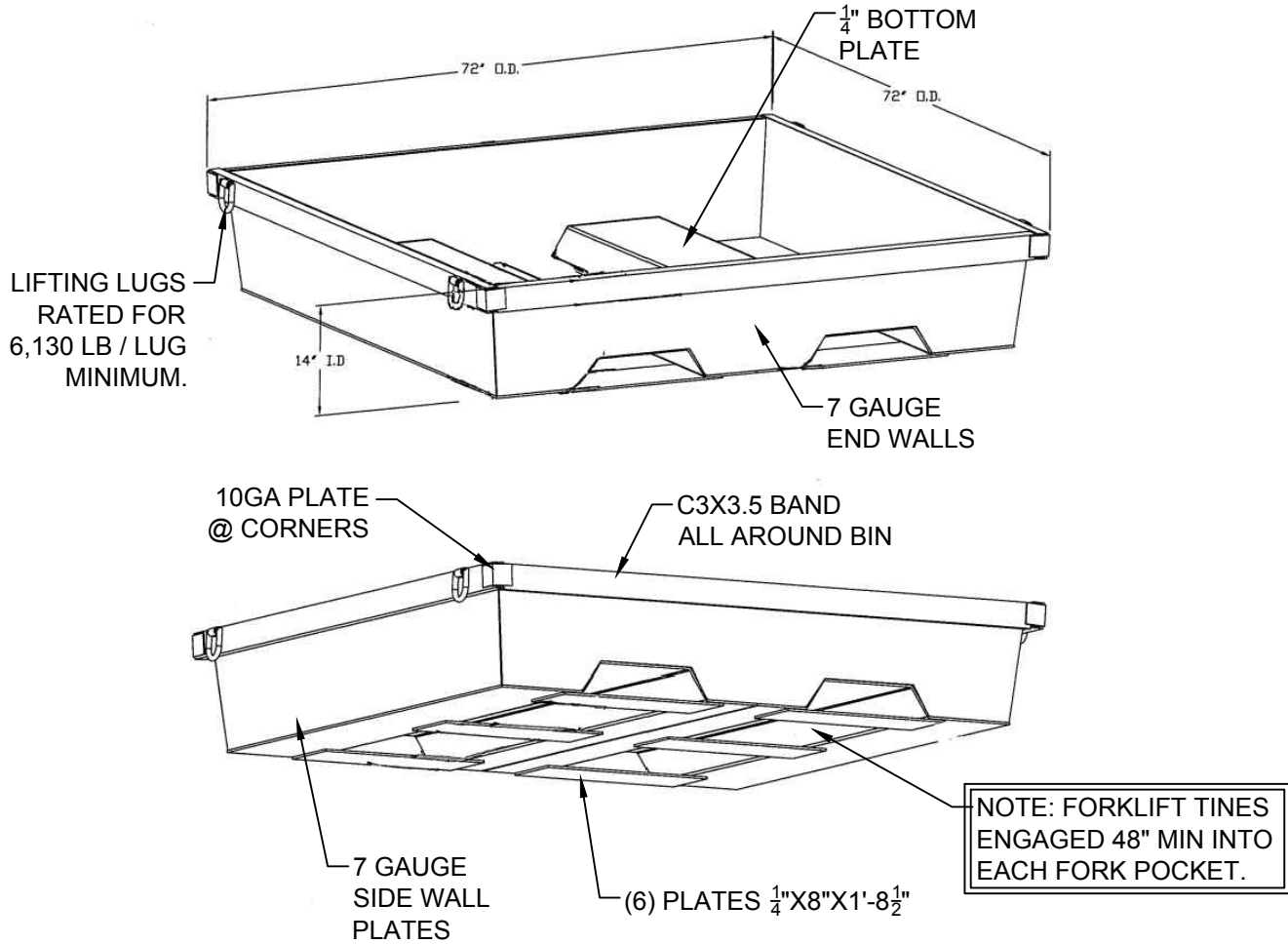


PROJECT: CONCRETE TRAY LIFTING RATING

PROJECT NO: 15-641

DESIGN: B.J.P.

DATE: 05/14/15



935 TARE WEIGHT = 689LB  
 ALLOWABLE LIVE LOAD W/ FORKLIFT = 17,500LB

1

CONCRETE TRAY - 935  
 LIFTING CAPACITY WITH FORKLIFT

SCALE: N.T.S.



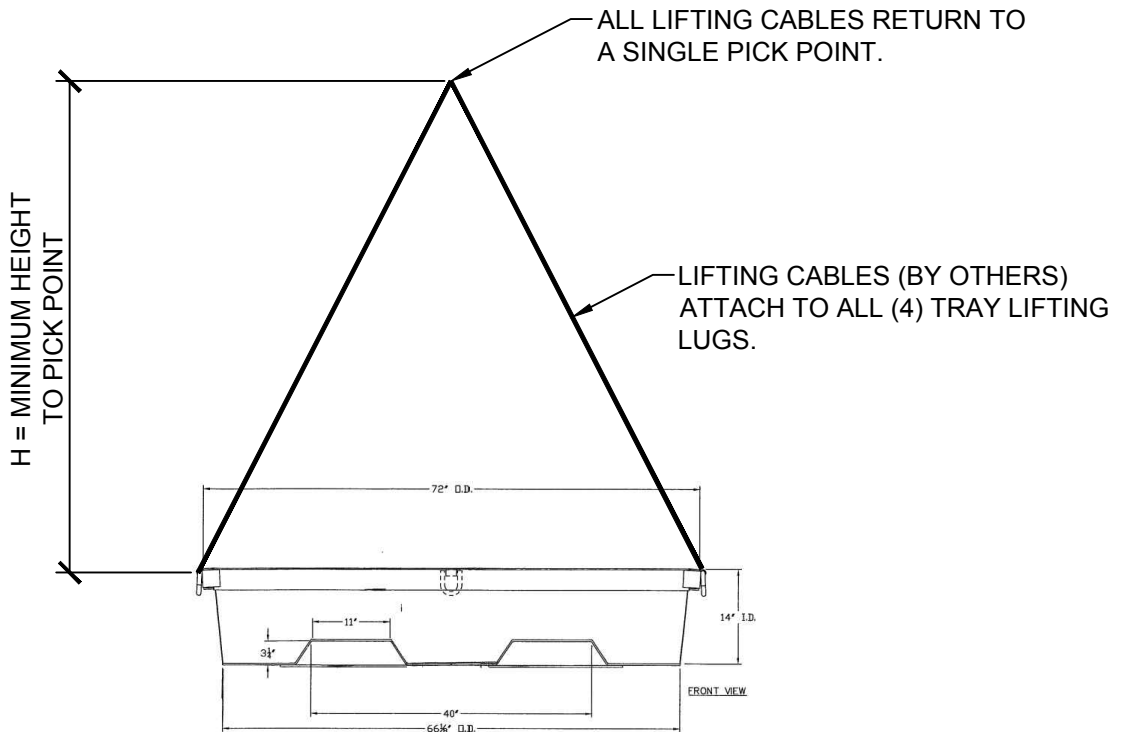
FILE: J:\15\600\15641 Concrete Nestable Trays\CAD\935 - SK1 - FORKLIFT.dwg 6/3/2015 4:03 PM - Ben

PROJECT: CONCRETE TRAY LIFTING RATING

PROJECT NO: 15-641

DESIGN: B.J.P.

DATE: 05/14/15



935 TARE WEIGHT = 689LB  
 ALLOWABLE LIVE LOAD = 6,500LB @ H = 5'-6" MIN  
 ALLOWABLE LIVE LOAD = 4,900LB @ H = 4'-0" MIN

**CONCRETE TRAY - 935**  
**LIFTING CAPACITY WITH SINGLE PICK POINT**

1

SCALE: N.T.S.



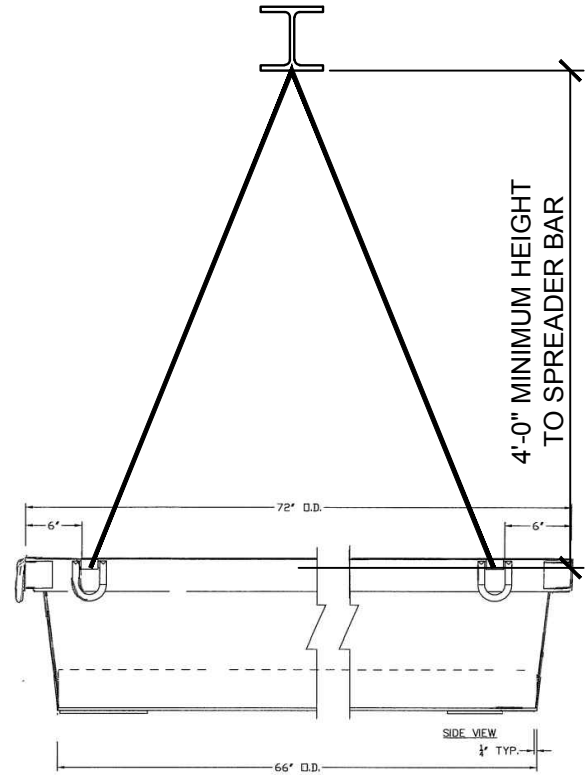
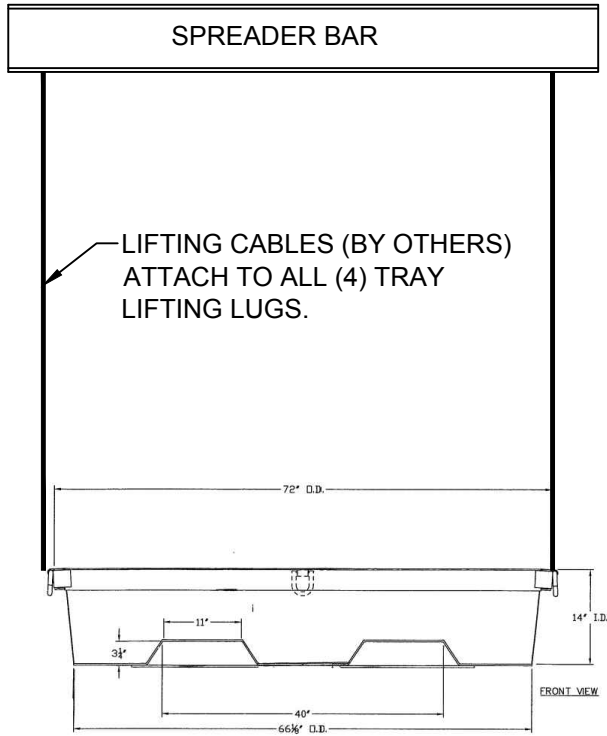
FILE: J:\15\600\15641 Concrete Nestable Trays\CAD\935 - SK2 -SINGLE PICK POINT.dwg 6/3/2015 4:03 PM - Ben

PROJECT: CONCRETE TRAY LIFTING RATING

PROJECT NO: 15-641

DESIGN: B.J.P.

DATE: 05/14/15



935 TARE WEIGHT = 689LB  
ALLOWABLE LIVE LOAD = 23,000LB

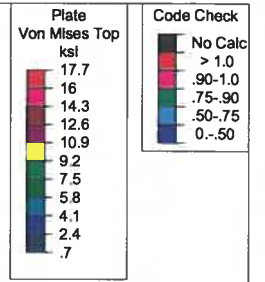
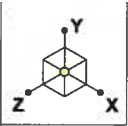
1

CONCRETE TRAY - 935  
LIFTING CAPACITY WITH SPREADER BAR

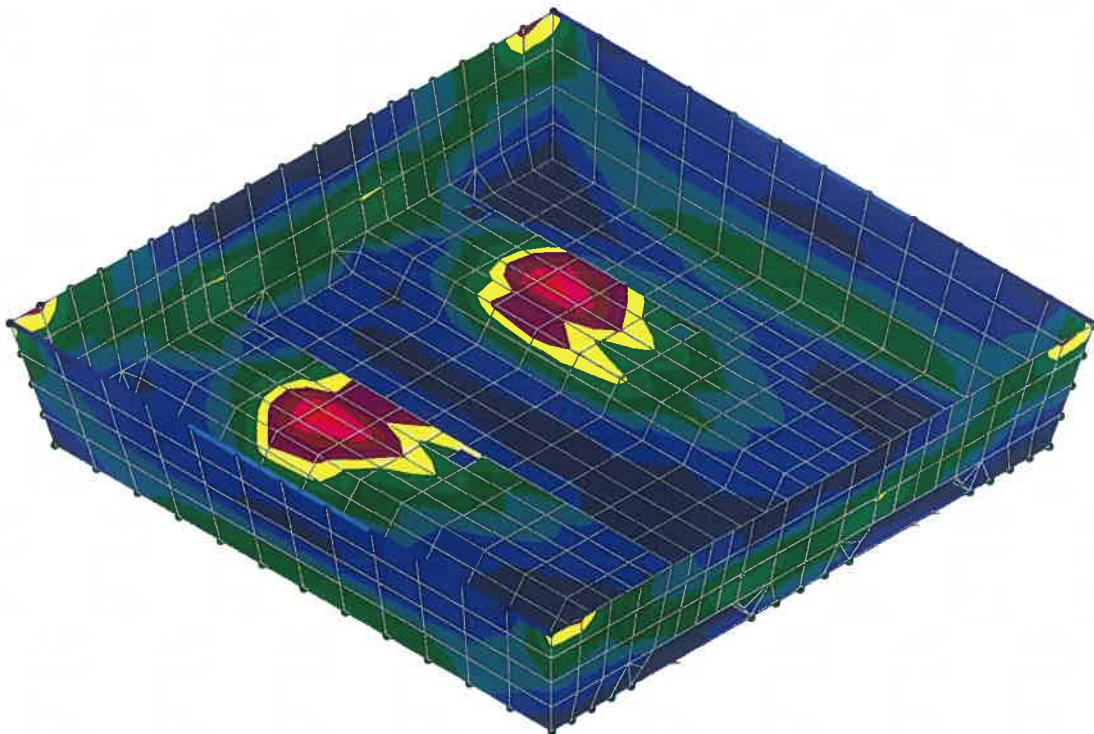
SCALE: N.T.S.



FILE: J:\15\600\15641 Concrete Nestable Trays\CAD\935 - SK3 -SPREADER BAR.dwg 6/3/2015 4:03 PM - Ben



LIVE LOAD = 17,500lb



Results for LC 1, DL + LL

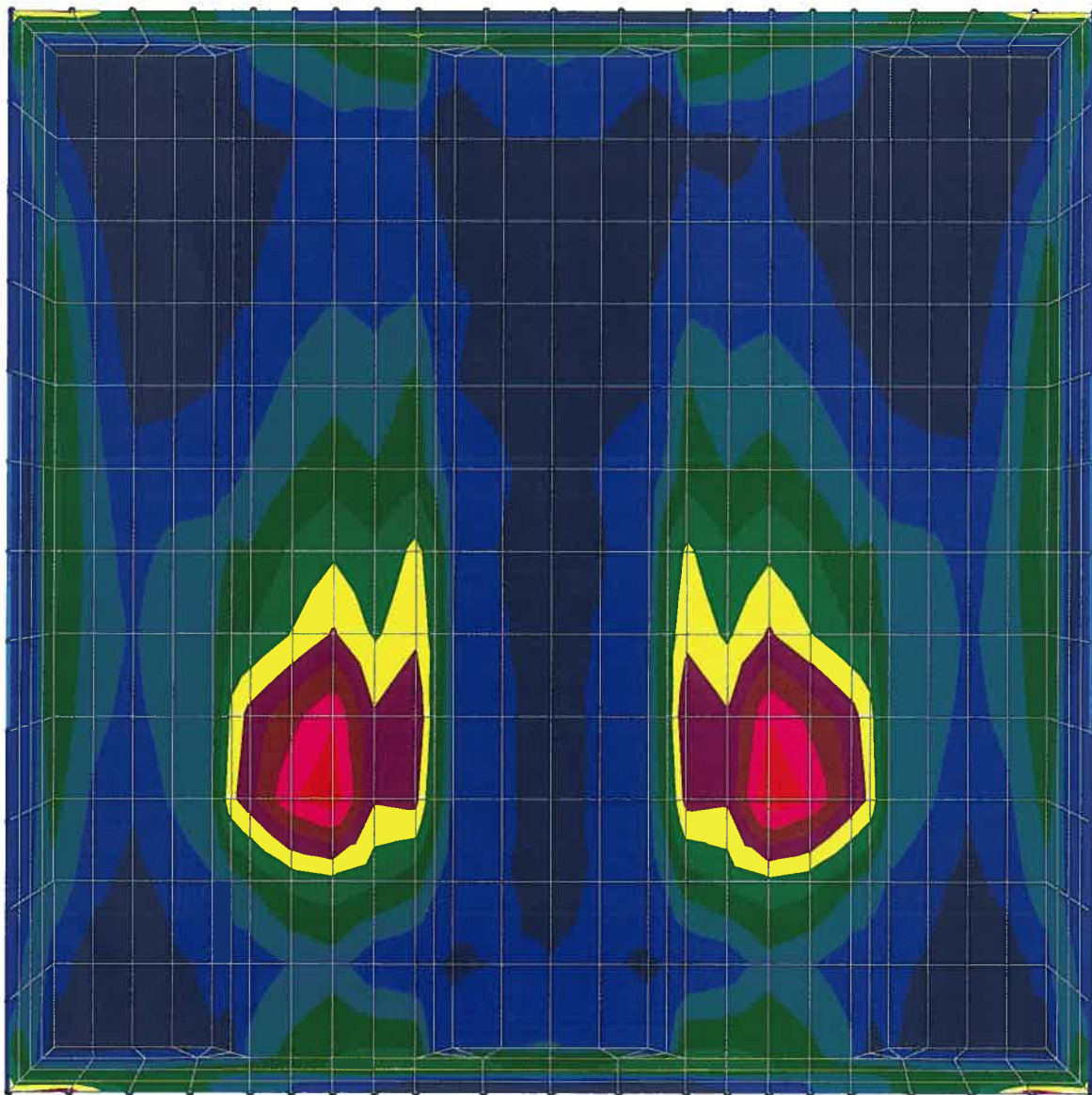
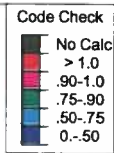
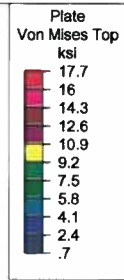
DEVCO ENGINEERING

B.J.P.

CONCRETE TRAY - - FORKLIFT PICK

SK - 1

May 15, 2015 at 3:42 PM



Results for LC 1, DL + LL

DEVCO ENGINEERING

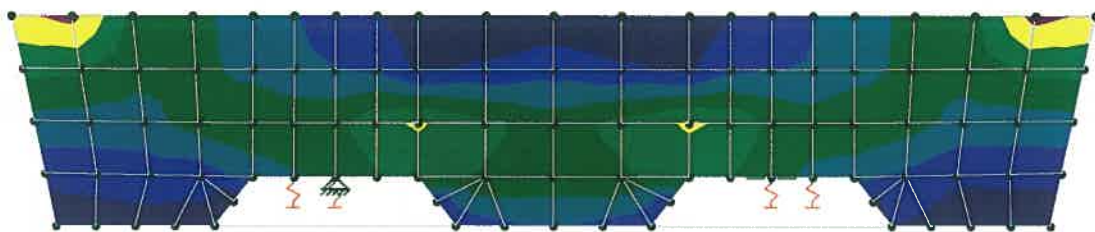
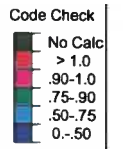
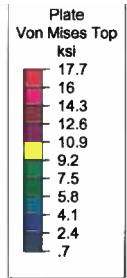
B.J.P.

CONCRETE TRAY - - FORKLIFT PICK

SK - 2

May 15, 2015 at 3:42 PM





Results for LC 1, DL + LL

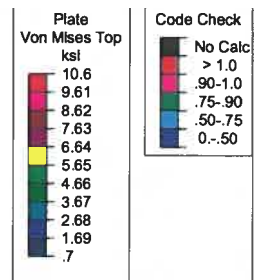
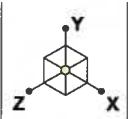
DEVCO ENGINEERING

B.J.P.

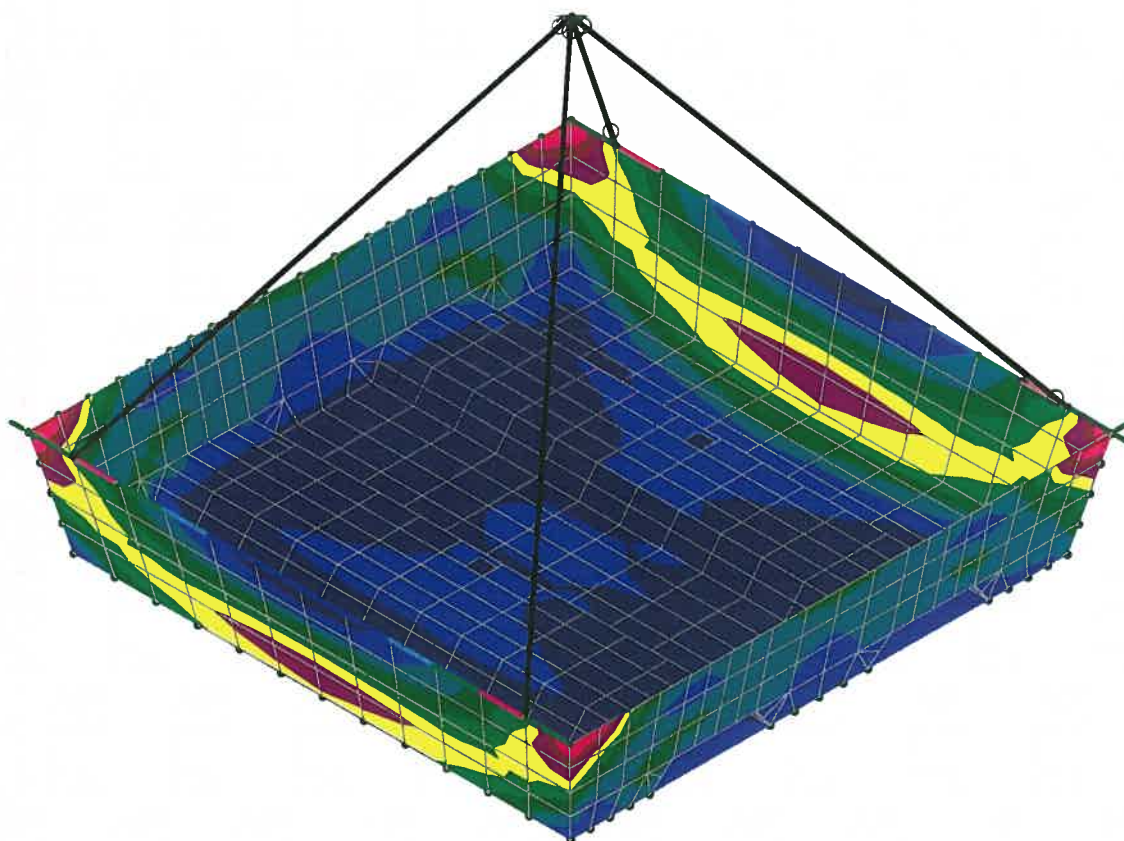
CONCRETE TRAY - - FORKLIFT PICK

SK - 3

May 15, 2015 at 3:44 PM



LIVE LOAD = 4,900lb



Results for LC 1, DL + LL

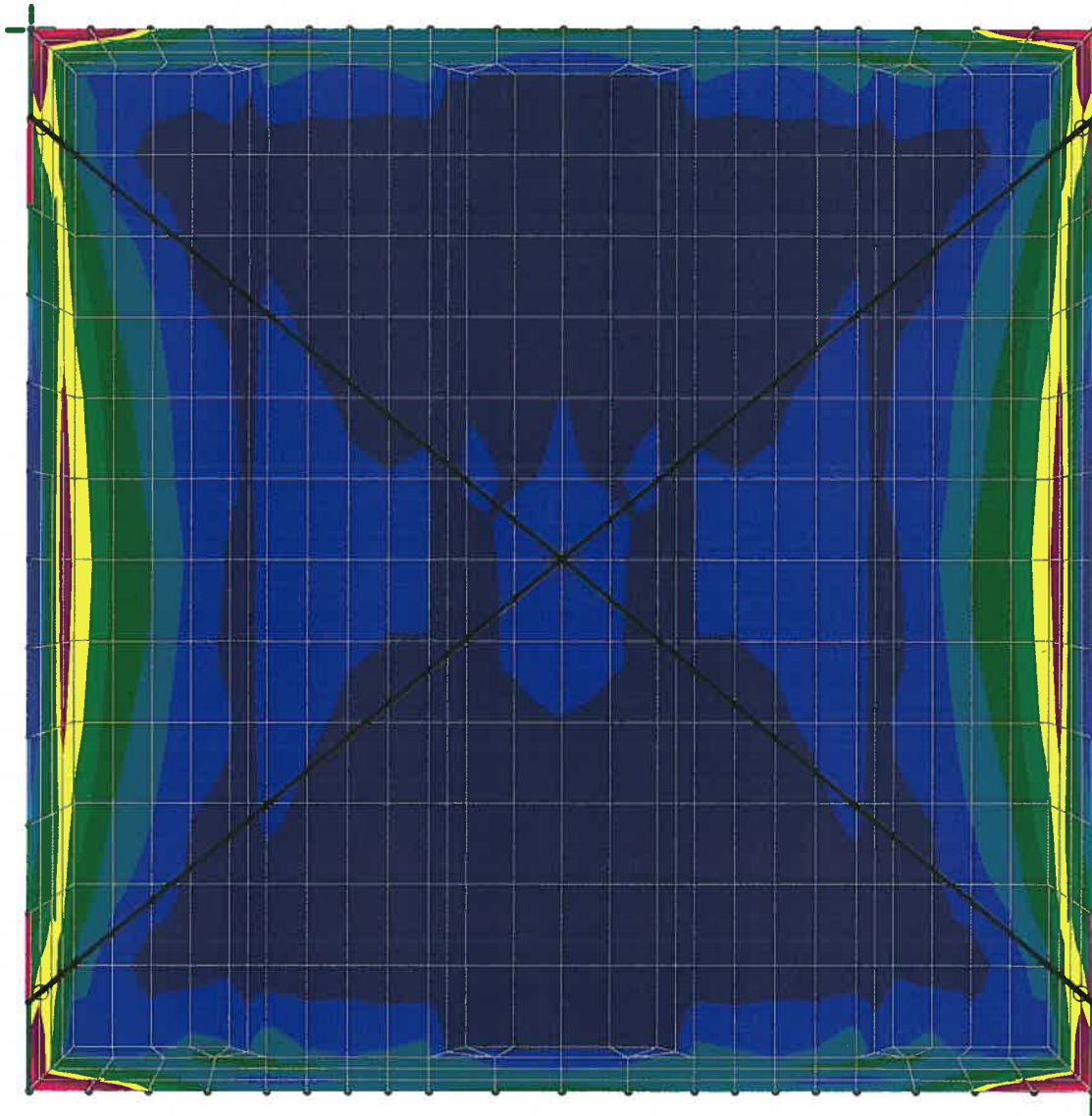
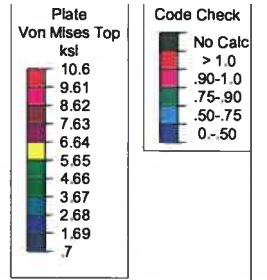
DEVCO ENGINEERING

B.J.P.

CONCRETE TRAY - - SINGLE PICK POINT HT=4'...

SK - 4

May 15, 2015 at 4:01 PM



Results for LC 1, DL + LL

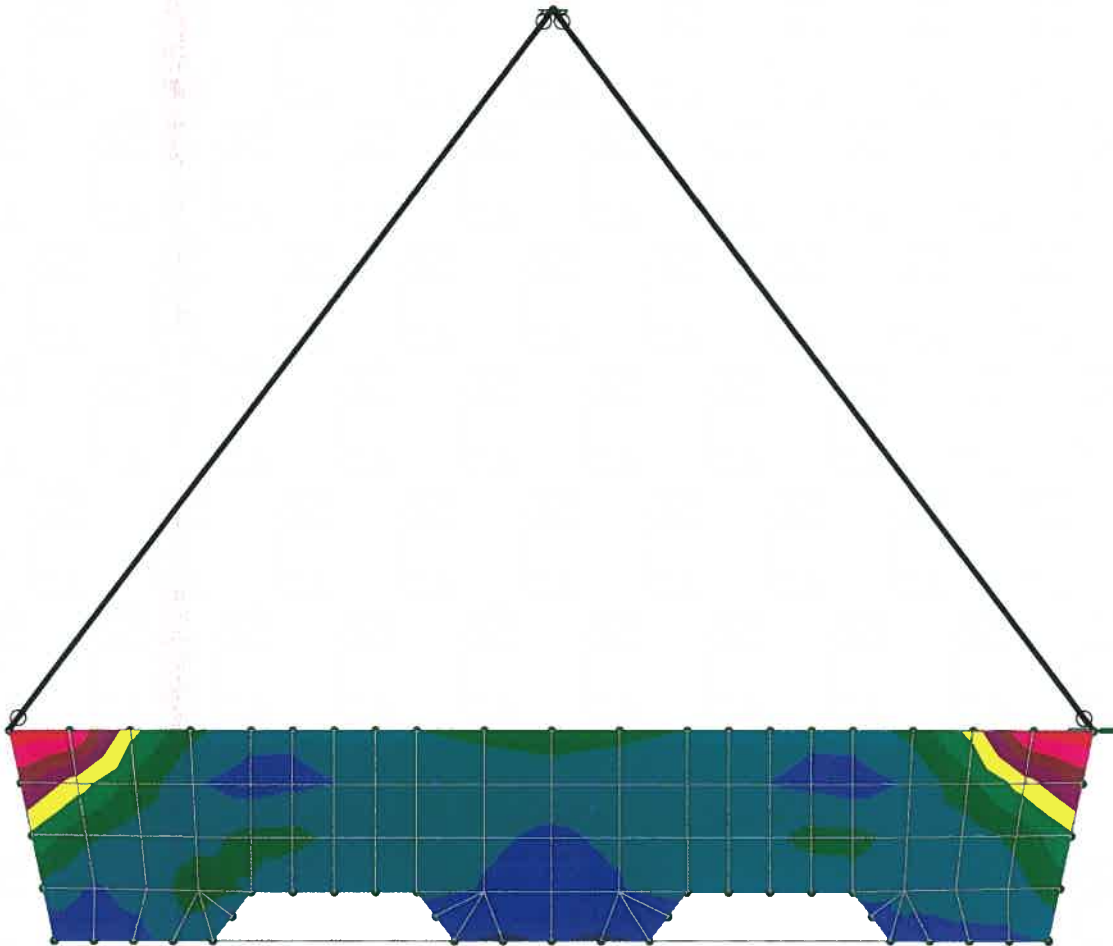
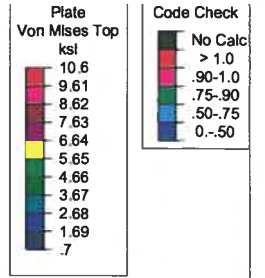
DEVCO ENGINEERING

B.J.P.

CONCRETE TRAY - SINGLE PICK POINT HT=4'...

SK - 5

May 15, 2015 at 4:02 PM



Results for LC 1, DL + LL

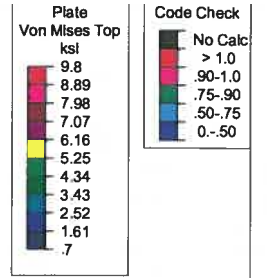
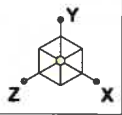
DEVCO ENGINEERING

B.J.P.

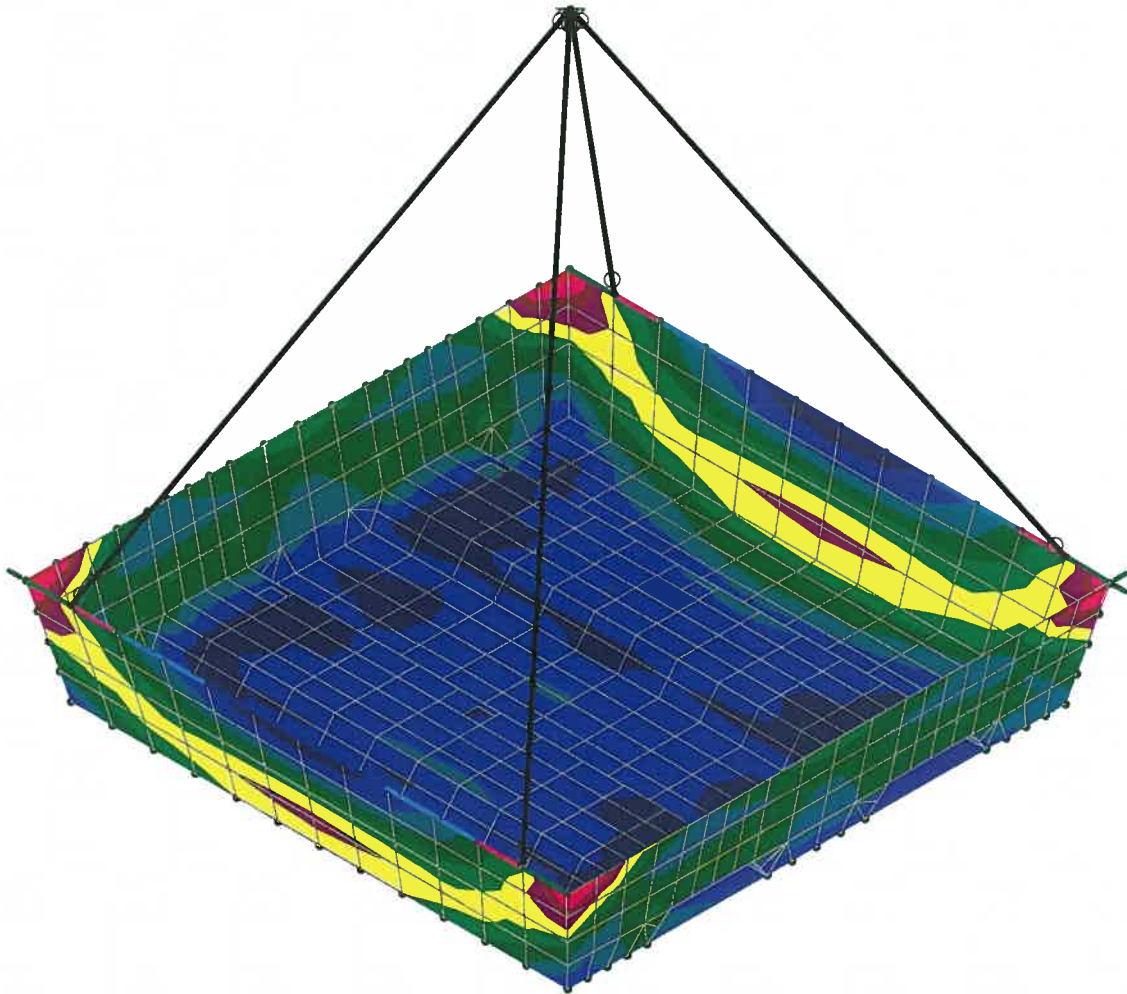
CONCRETE TRAY - SINGLE PICK POINT HT=4'...

SK - 6

May 15, 2015 at 4:02 PM



LIVE LOAD = 6,500lb



Results for LC 1, DL + LL

DEVCO ENGINEERING

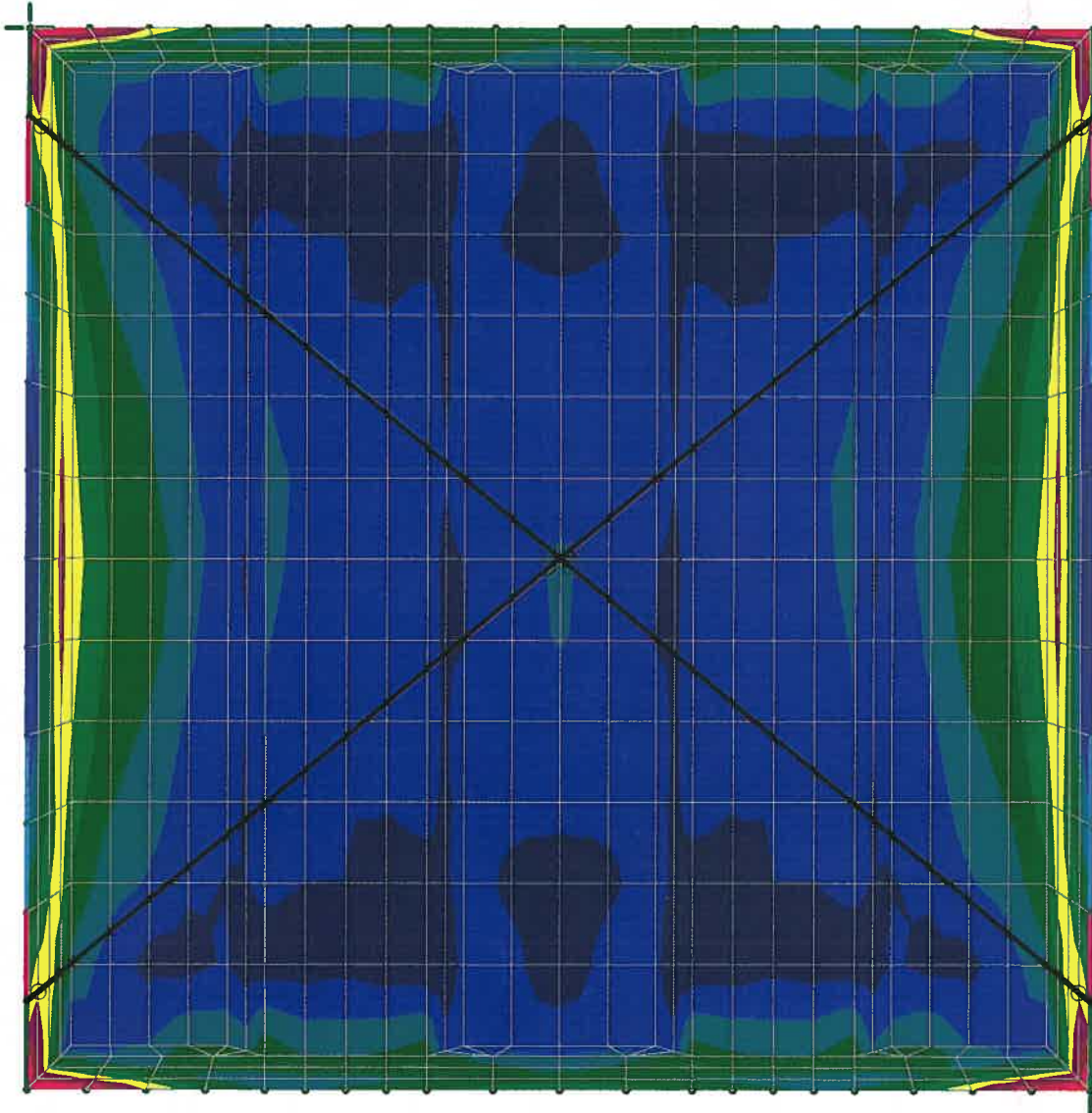
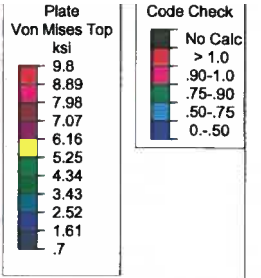
B.J.P.

CONCRETE TRAY

SINGLE PICK POINT HT=5'...

SK - 7

May 15, 2015 at 4:05 PM



Results for LC 1, DL + LL

DEVCO ENGINEERING

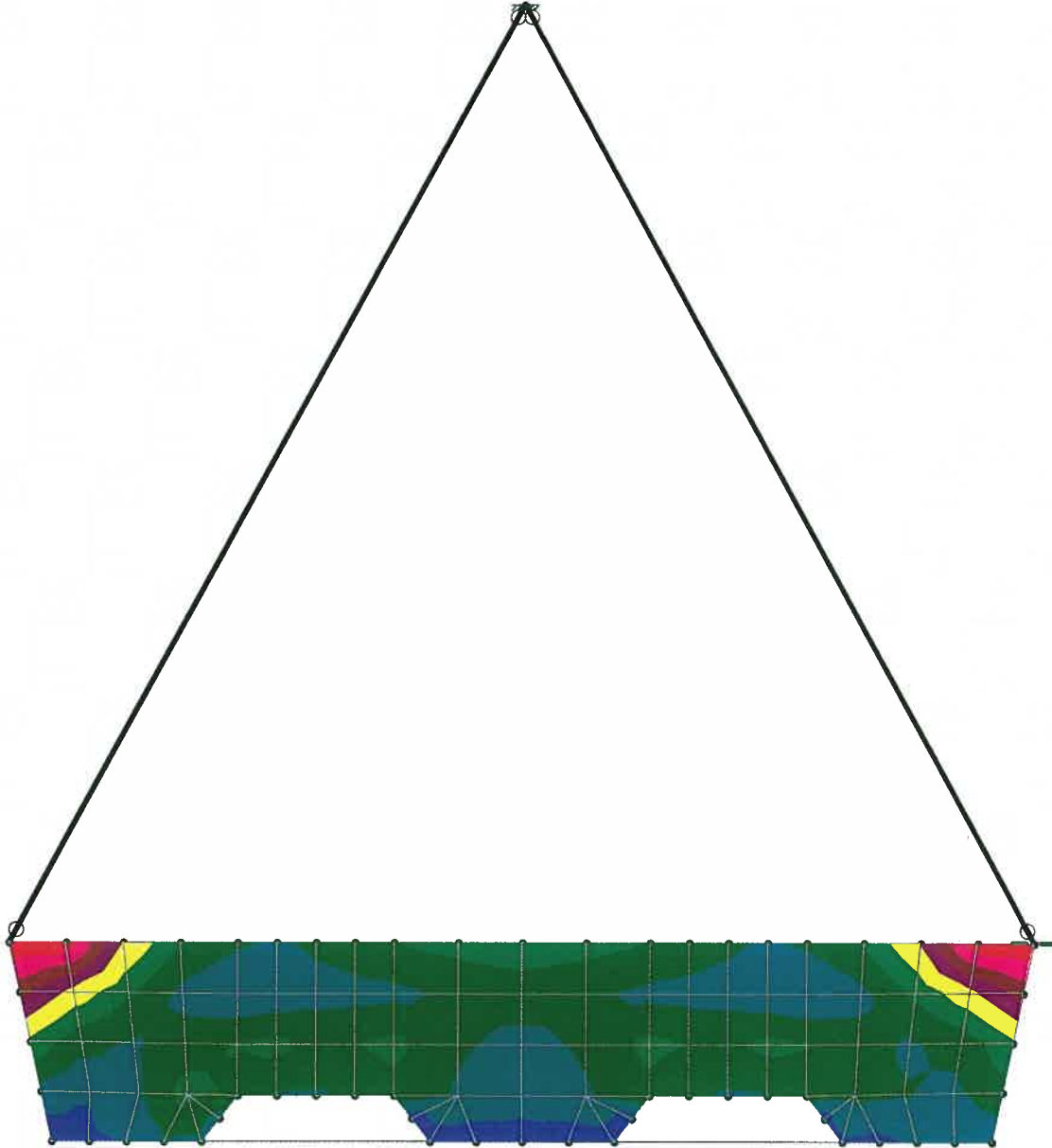
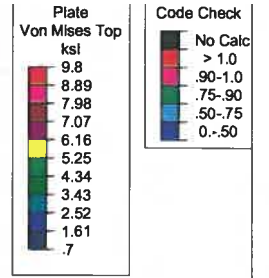
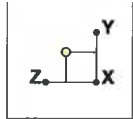
B.J.P.

CONCRETE TRAY

SINGLE PICK POINT HT=5'...

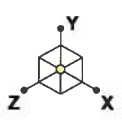
SK - 8

May 15, 2015 at 4:05 PM

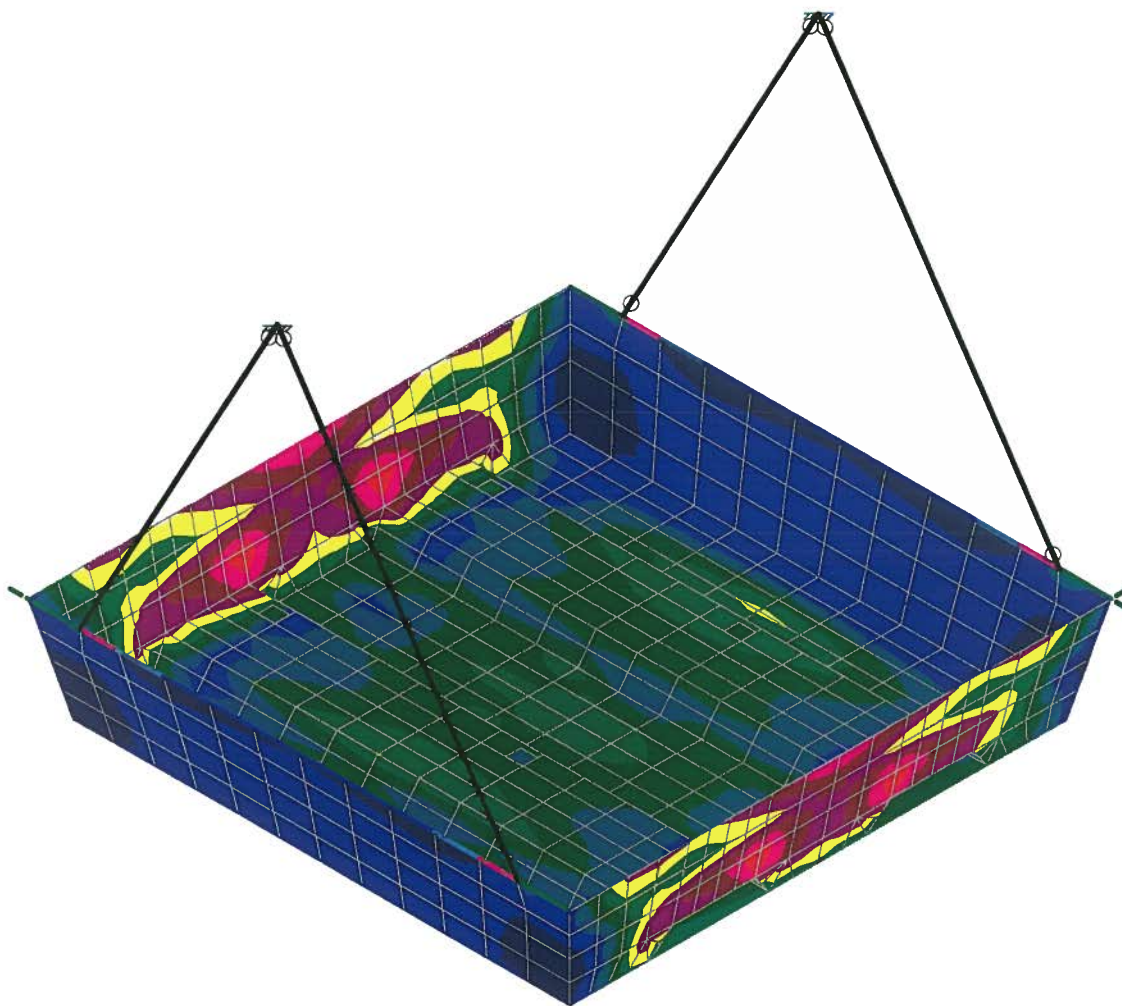
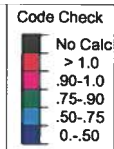
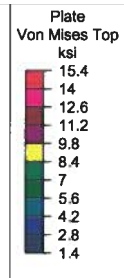


Results for LC 1, DL + LL

DEVCO ENGINEERING		SK - 9
B.J.P.	CONCRETE TRAY · SINGLE PICK POINT HT=5'...	May 15, 2015 at 4:05 PM



LIVE LOAD = 23,000lb



Results for LC 1, DL + LL

Devco Engineering

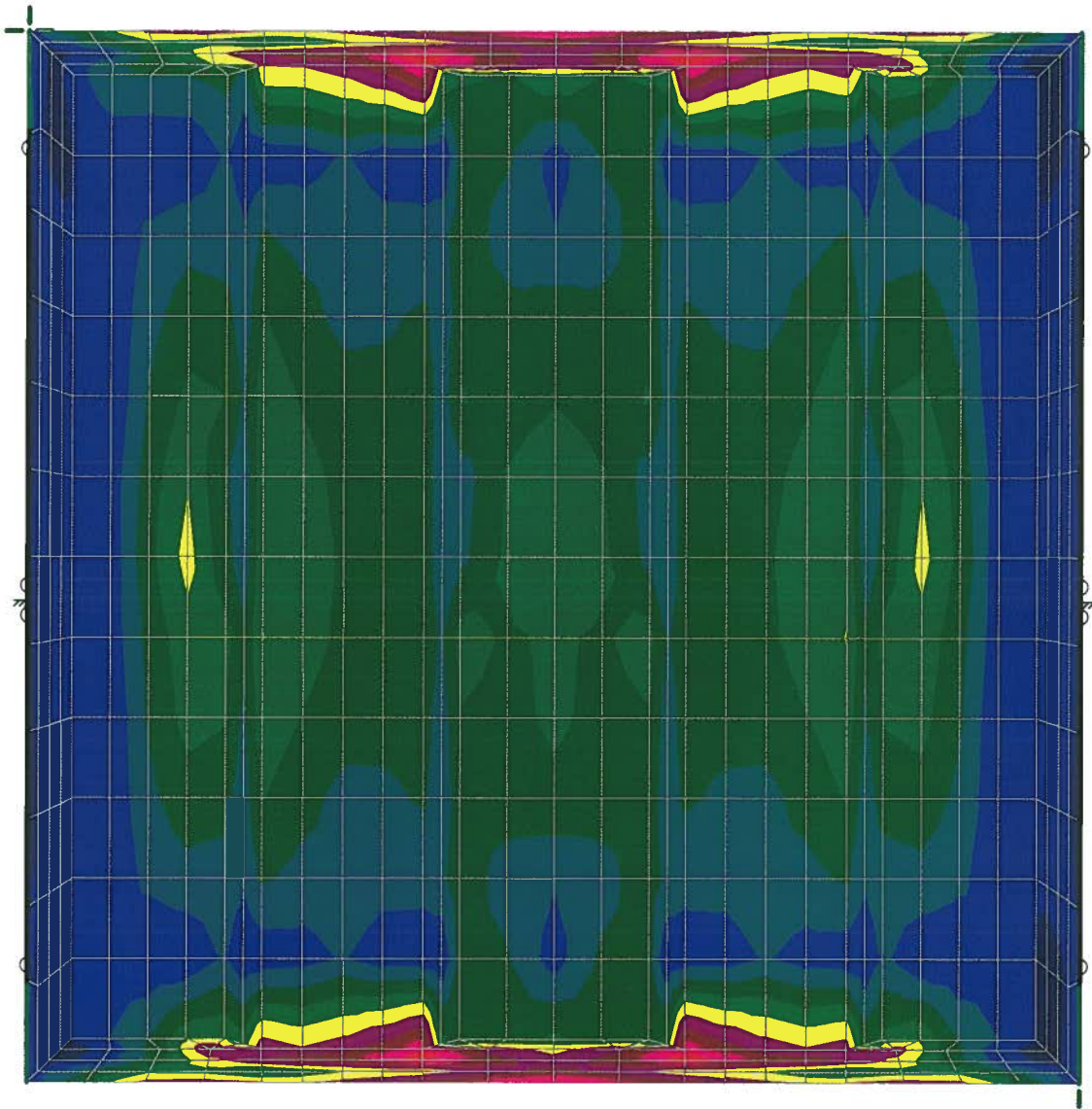
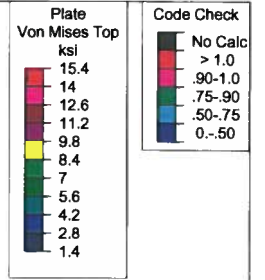
B.J.P.

Spreader Bar @ 4'-0" Ht

SK - 19

June 3, 2015 at 2:14 PM





Results for LC 1, DL + LL

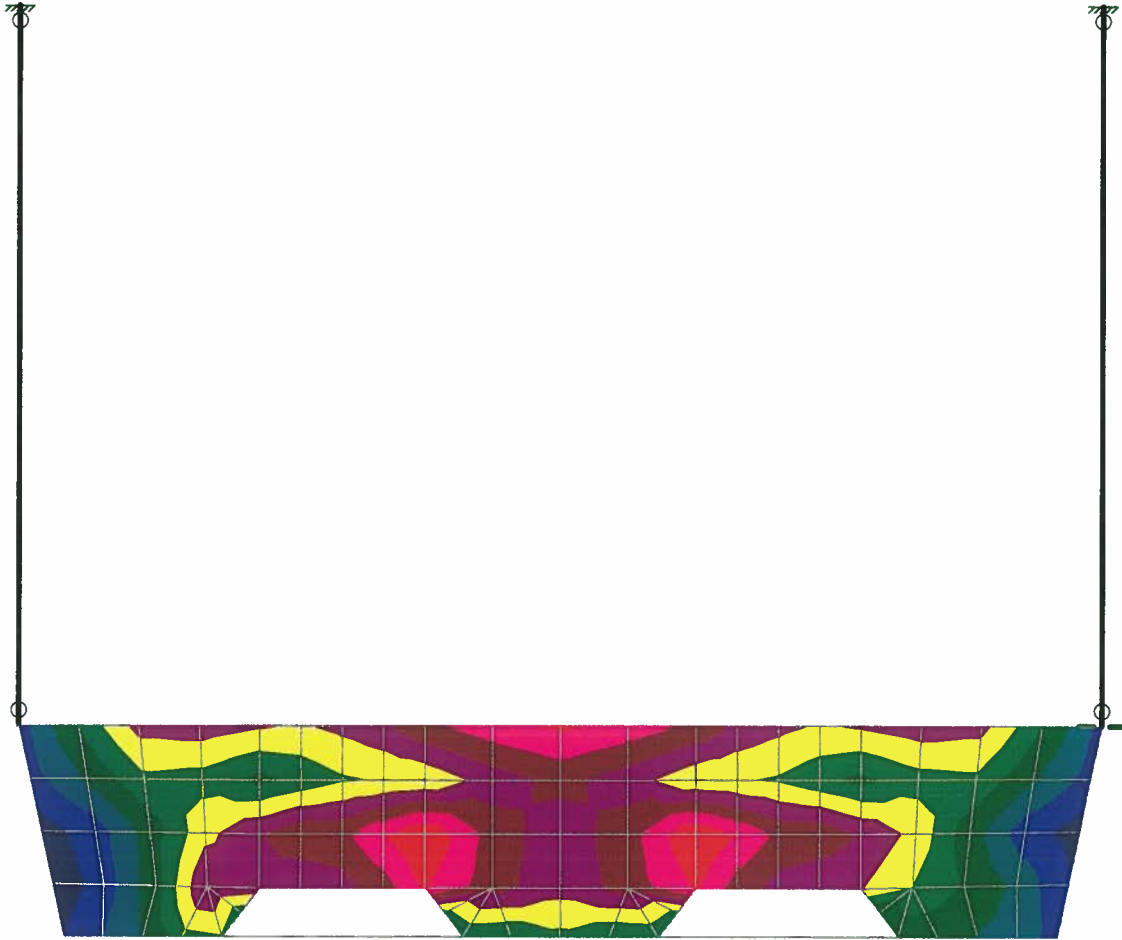
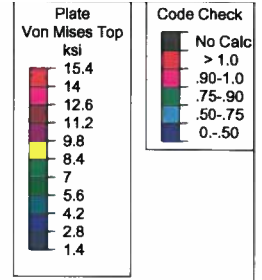
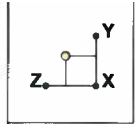
Devco Engineering

B.J.P.

Spreader Bar @ 4'-0" Ht

SK - 20

June 3, 2015 at 2:14 PM



Results for LC 1, DL + LL

Devco Engineering
B.J.P.

Spreader Bar @ 4'-0" Ht

SK - 21
June 3, 2015 at 2:15 PM