



Structural Design Calculations for
Consolidated Fabricators ConFab
DURAPAN®

Devco Job # 15-641
June 3, 2015



Table of Contents

Structural Design Calculations for
Consolidated Fabricators ConFab
DURAPAN®

<u>Subject</u>	<u>Page</u>
935 - Forklift Pick	SK1-SK3
935 - Single Pick Point w/ 4ft Height	SK4-SK6
935 - Single Pick Point w/ 5.5ft Height	SK7-SK8
927 - Forklift Pick	SK10-SK12
927 - Single Pick Point w/ 4ft Height	SK13-SK15
927 - Single Pick Point w/ 5.5ft Height	SK16-SK18
935 - Spreader Bar Pick	SK19-SK21
927 - Spreader Bar Pick	SK22-SK24

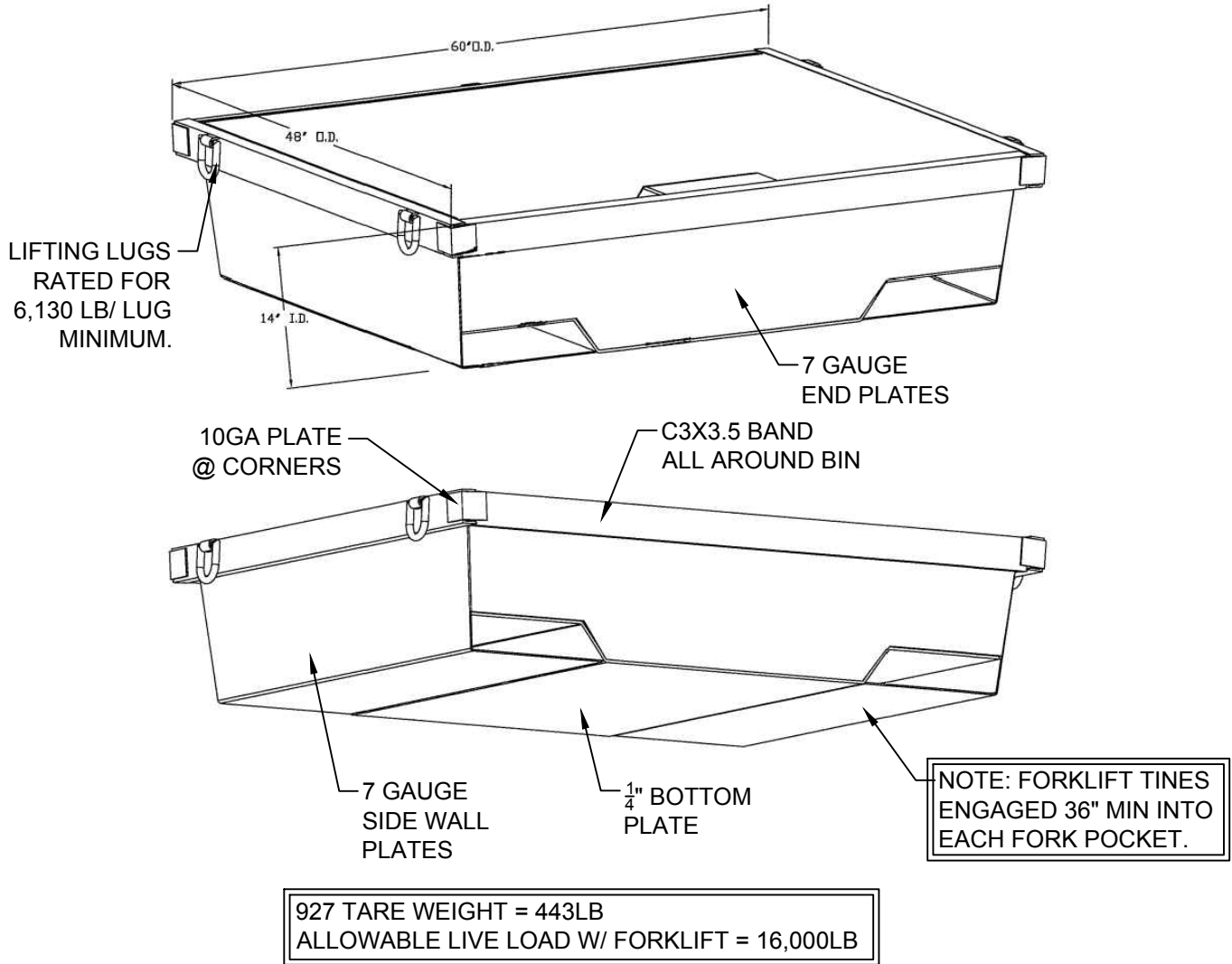


PROJECT: CONCRETE TRAY LIFTING RATING 927

PROJECT NO: 15-641

DESIGN: B.J.P.

DATE: 05/14/15



CONCRETE TRAY - 927
LIFTING CAPACITY W/ FORKLIFT

1

SCALE: N.T.S.

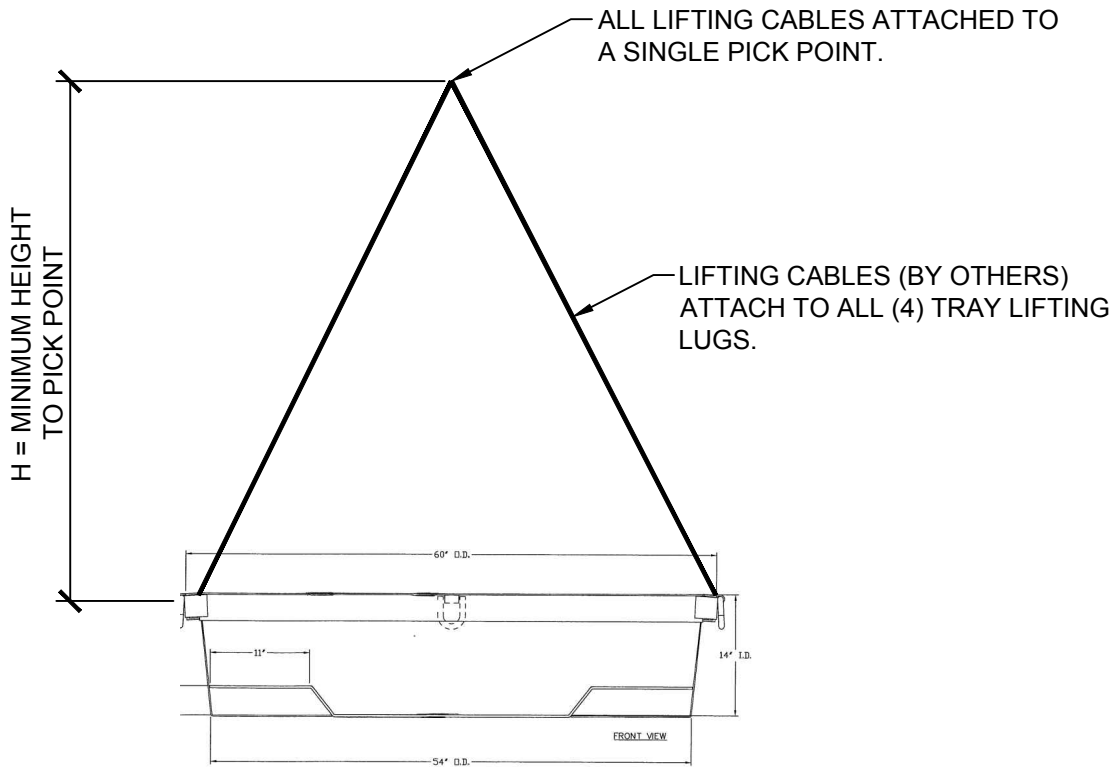


PROJECT: CONCRETE TRAY LIFTING RATING 927

PROJECT NO: 15-641

DESIGN: B.J.P.

DATE: 05/14/15



927 TARE WEIGHT = 443LB
ALLOWABLE LIVE LOAD = 7,200LB @ H = 5'-6" MIN
ALLOWABLE LIVE LOAD = 5,700LB @ H = 4'-0" MIN

1

CONCRETE TRAY - 927
LIFTING CAPACITY WITH SINGLE PICK POINT

SCALE: N.T.S.



2015.06.03 16:17:51-07'00'

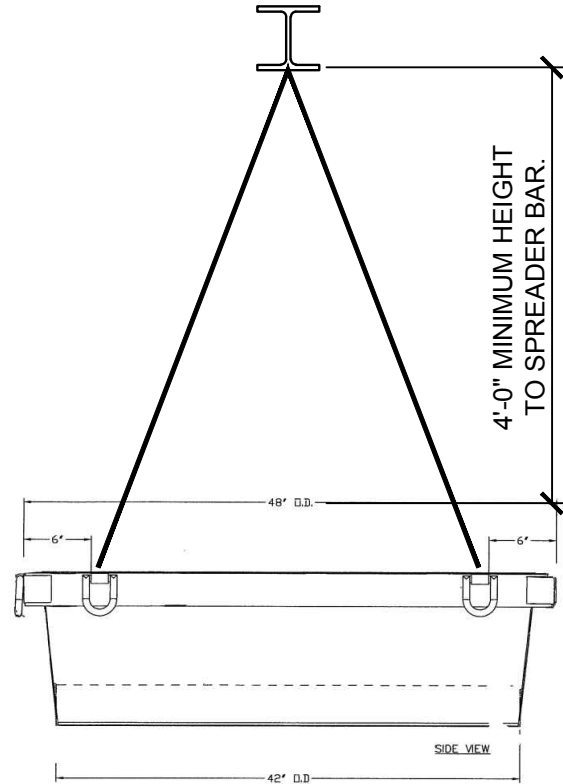
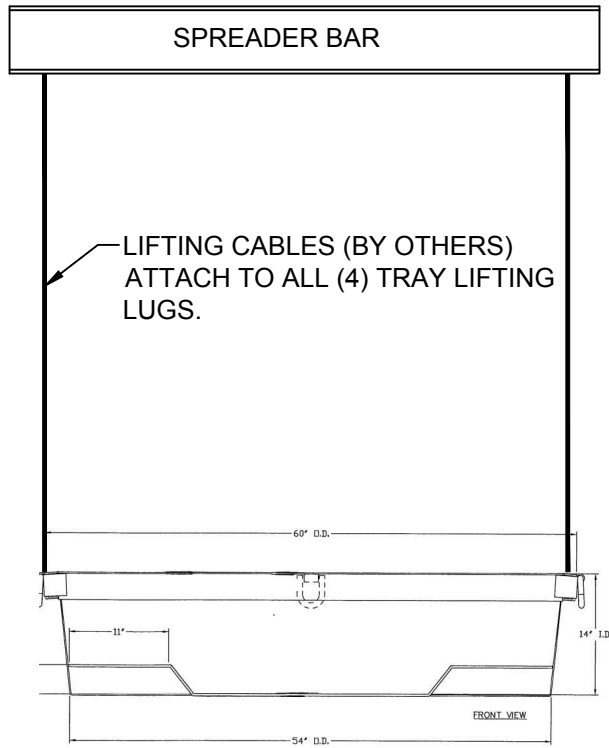
FILE: J:\15\600\15641 Concrete Nestable Trays\CAD\927 - SK5 -SINGLE PICK POINT.dwg 6/3/2015 4:03 PM - Ben

PROJECT: CONCRETE TRAY LIFTING RATING 927

PROJECT NO: 15-641

DESIGN: B.J.P.

DATE: 05/14/15



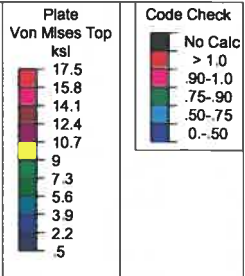
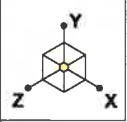
927 TARE WEIGHT = 443LB
ALLOWABLE LIVE LOAD = 12,500LB

CONCRETE TRAY - 927
LIFTING CAPACITY WITH SPREADER BAR

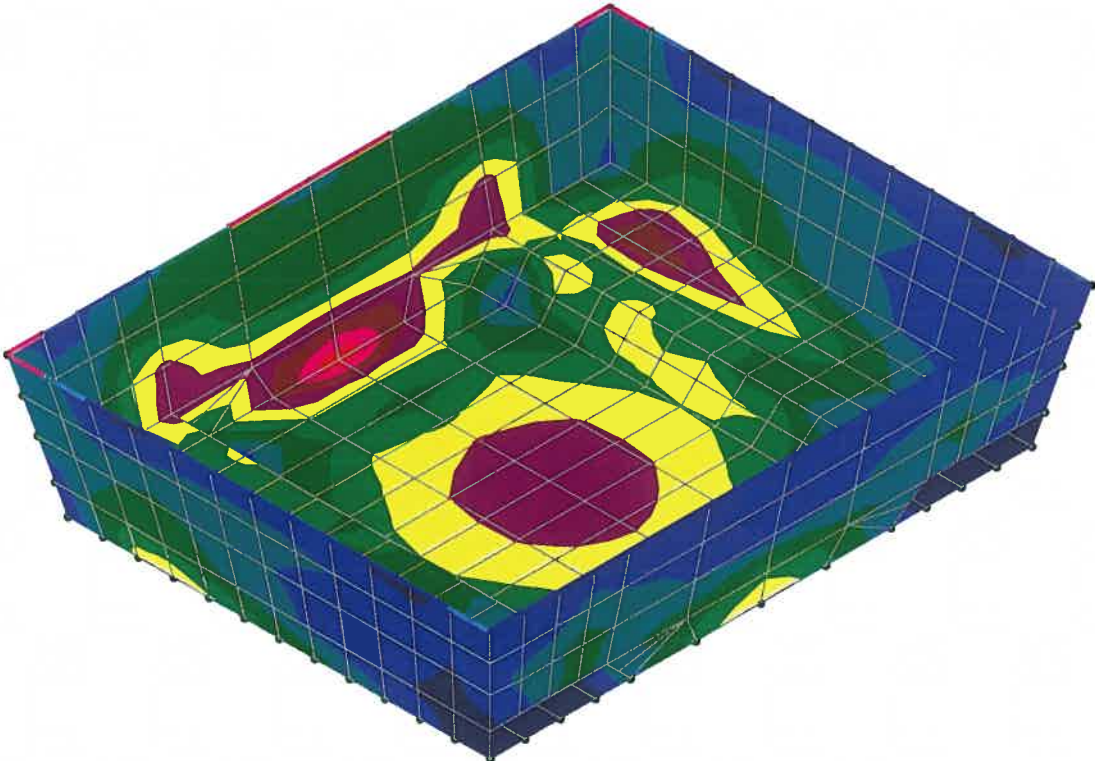
1

SCALE: N.T.S.





LIVE LOAD = 16,000lb



Results for LC 1. DL + LL

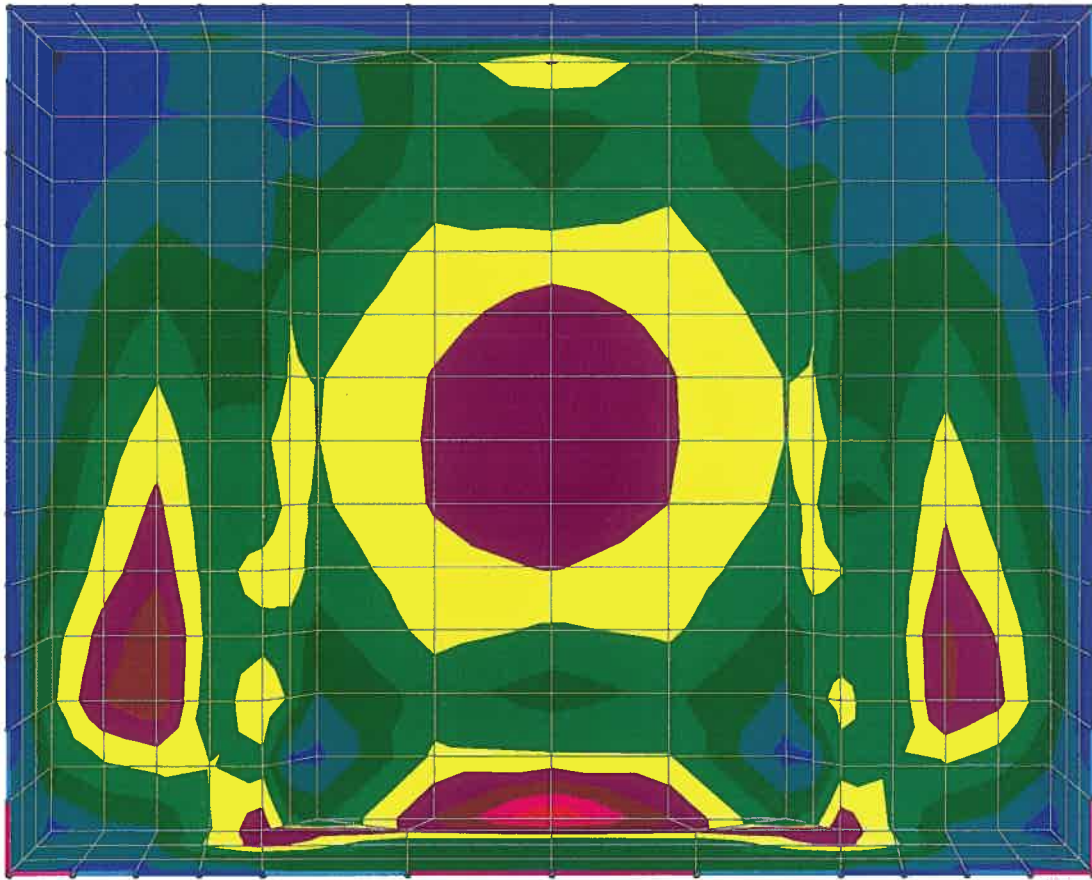
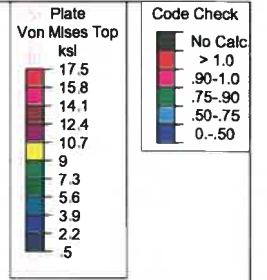
Devco Engineering

B.J.P.

CONCRETE TRAY · FORKLIFT PICK

SK - 10

May 15, 2015 at 4:24 PM



Results for LC 1, DL + LL

Devco Engineering

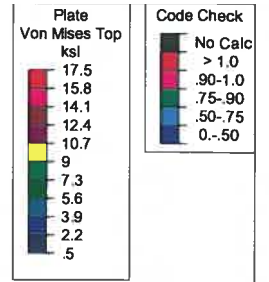
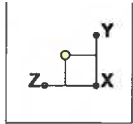
B.J.P.

CONCRETE TRAY

FORKLIFT PICK

SK - 11

May 15, 2015 at 4:24 PM



Results for LC 1, DL + LL

Devco Engineering

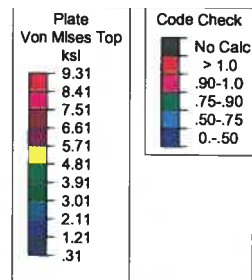
B.J.P.

CONCRETE TRAY -

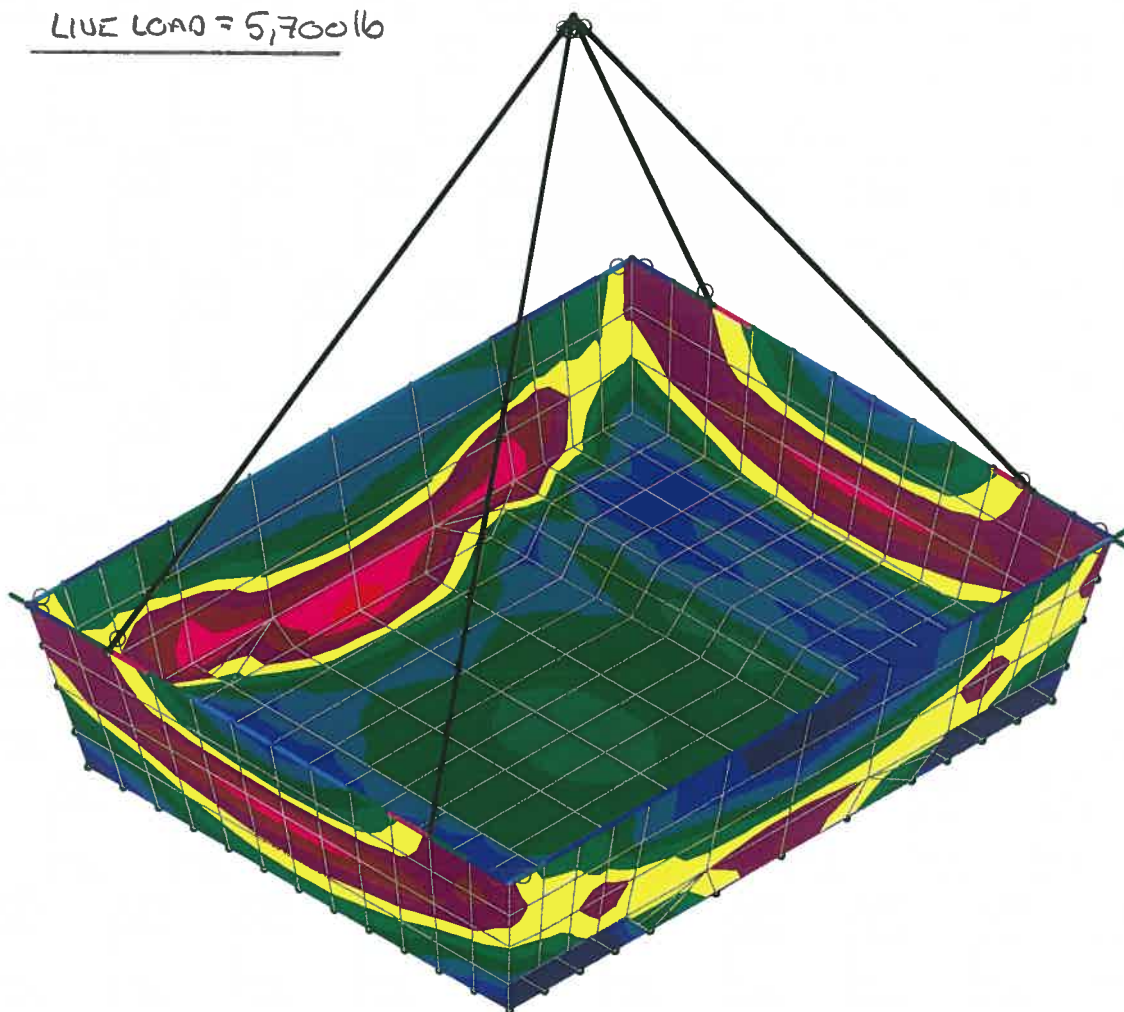
FORKLIFT PICK

SK - 12

May 15, 2015 at 4:24 PM



LIVE LOAD = 5,700 lb



Results for LC 1, DL + LL

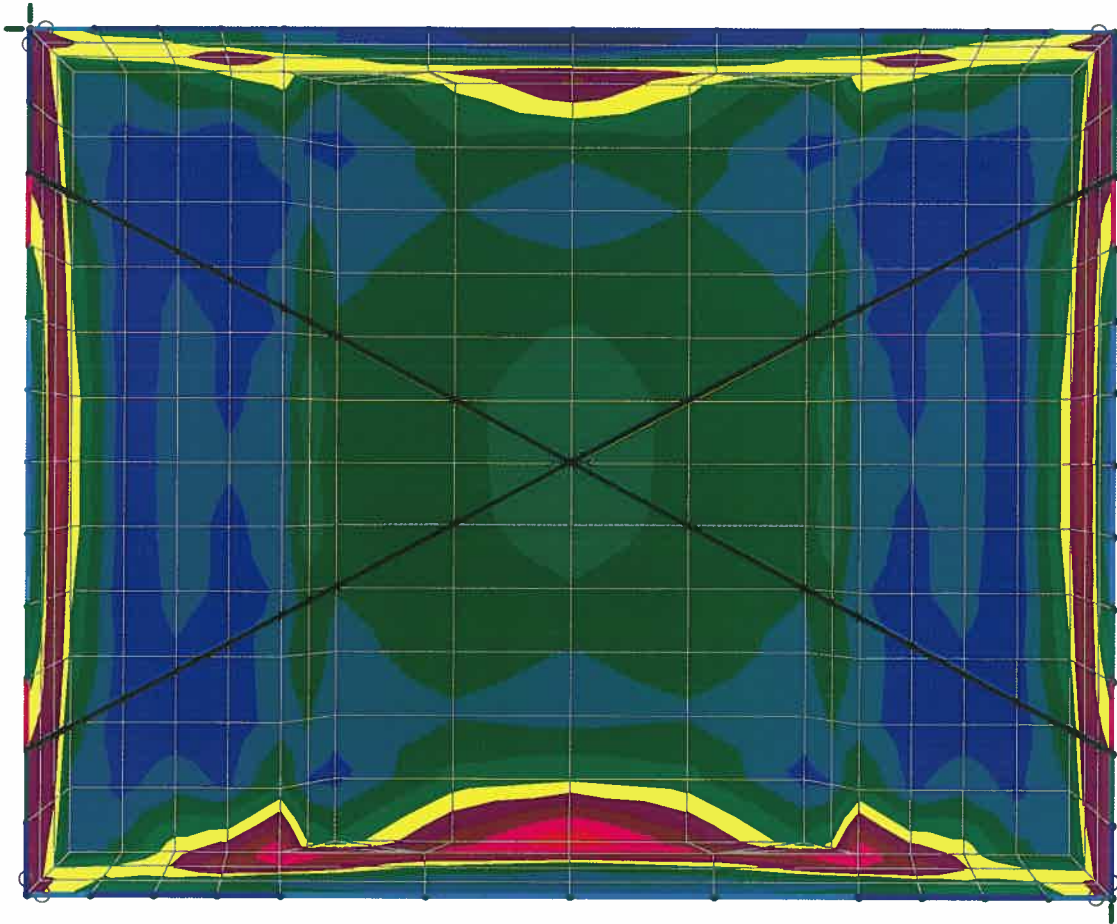
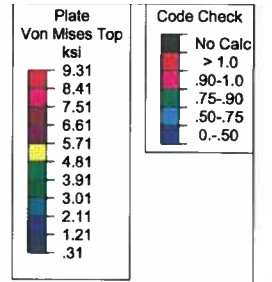
Devco Engineering

B.J.P.

CONCRETE TRAY - - SINGLE PICK POINT HT=4'...

SK - 13

May 15, 2015 at 4:31 PM



Results for LC 1, DL + LL

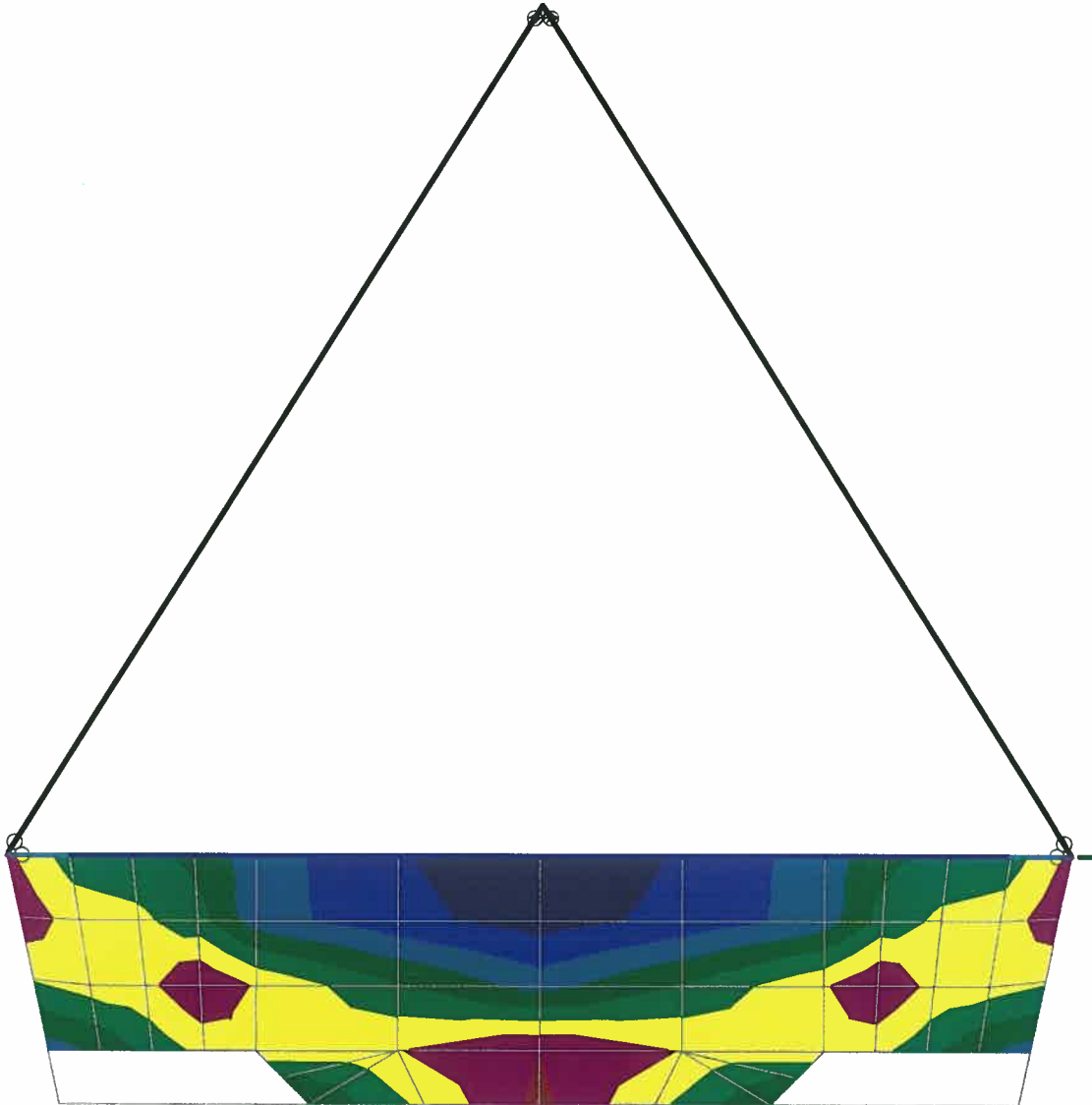
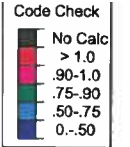
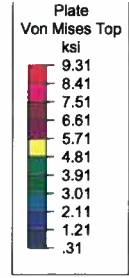
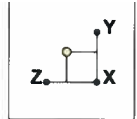
Devco Engineering

B.J.P.

CONCRETE TRAY - SINGLE PICK POINT HT=4'...

SK - 14

May 15, 2015 at 4:31 PM



Results for LC 1, DL + LL

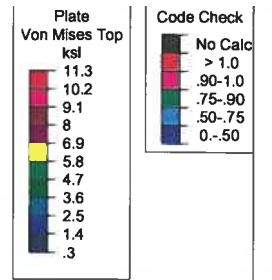
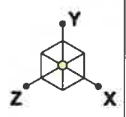
Devco Engineering

B.J.P.

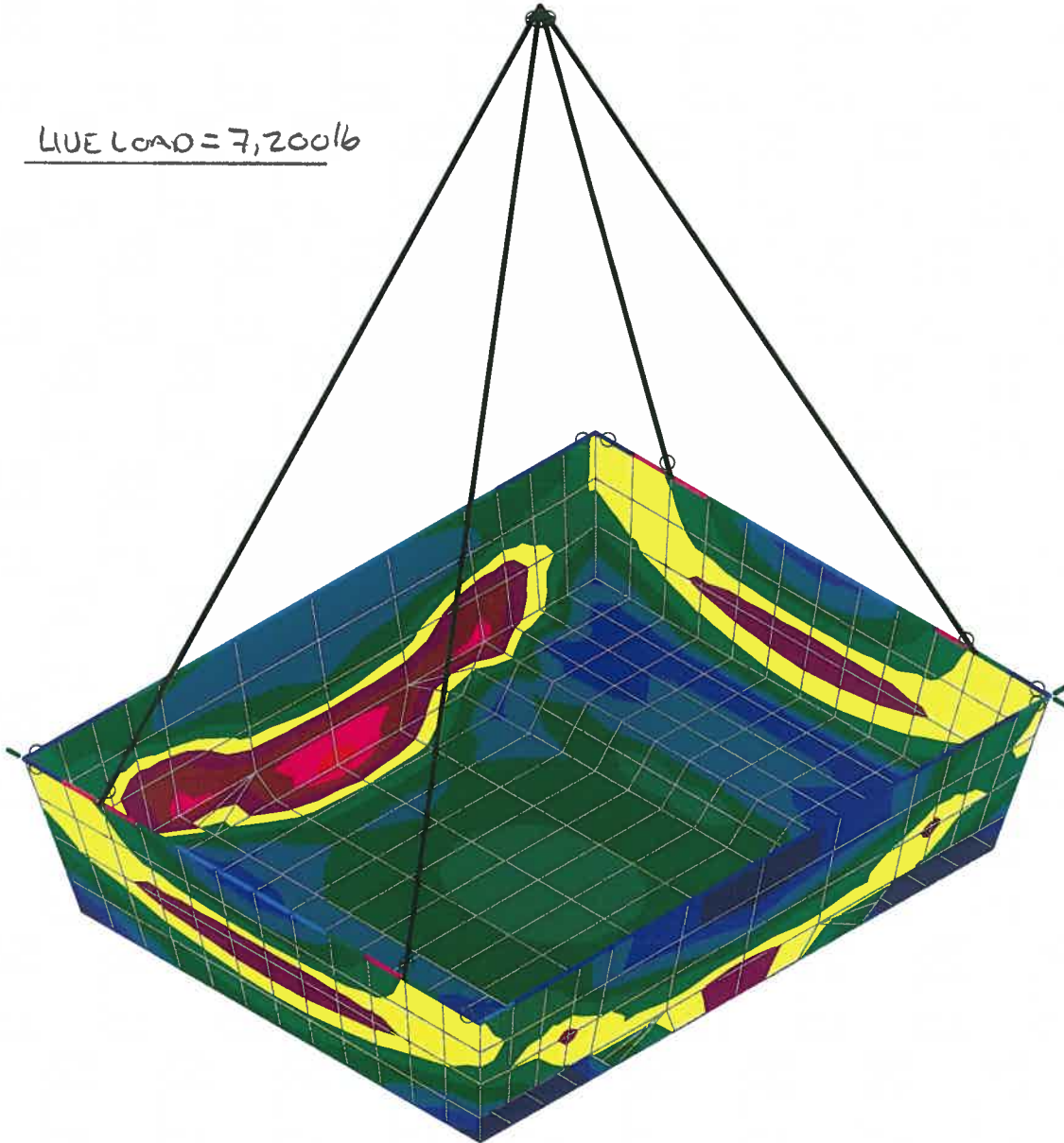
CONCRETE TRAY - SINGLE PICK POINT HT=4'...

SK - 15

May 15, 2015 at 4:31 PM



LIVE LOAD = 7,200lb



Results for LC 1, DL + LL

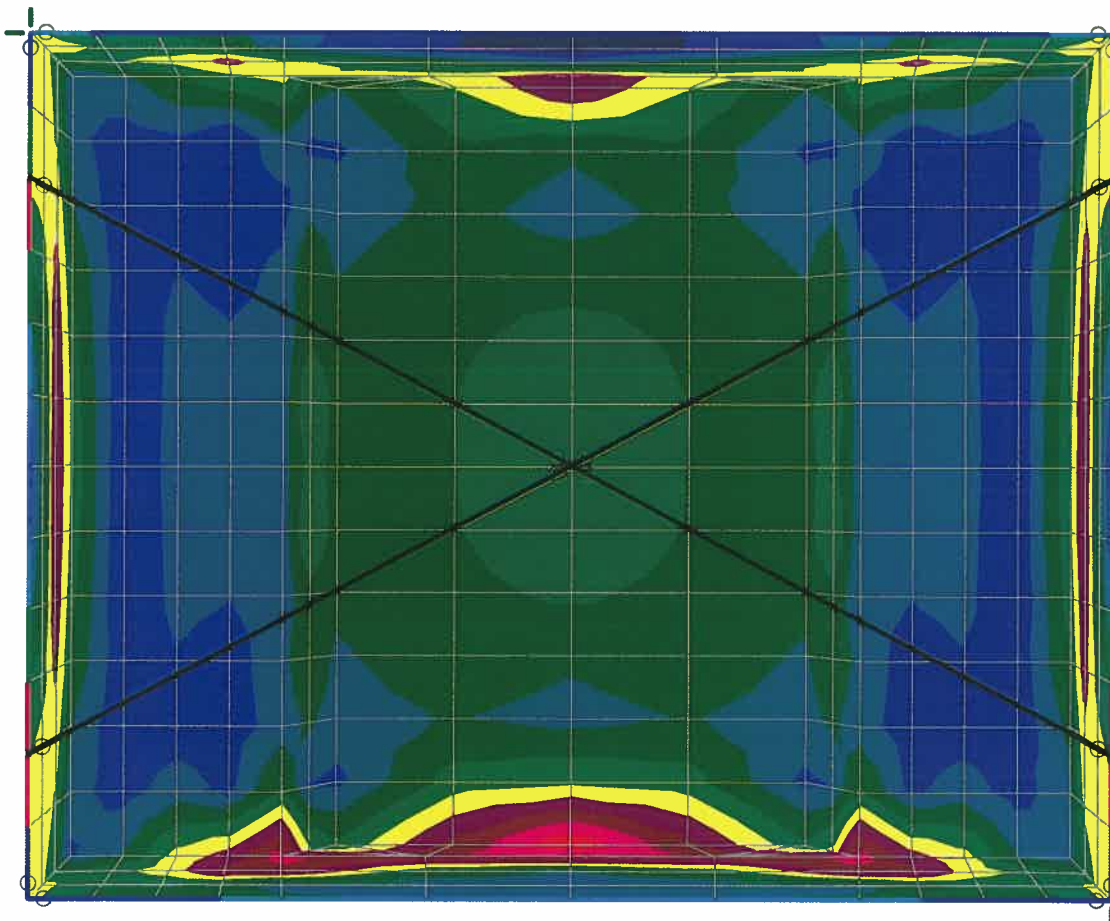
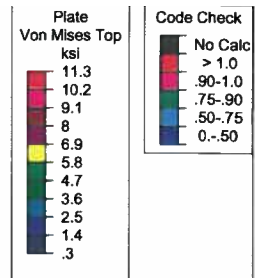
Devco Engineering

B.J.P.

CONCRETE TRAY - - SINGLE PICK POINT HT=5'...

SK - 16

May 15, 2015 at 4:36 PM



Results for LC 1, DL + LL

Devco Engineering

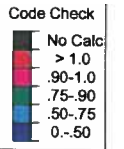
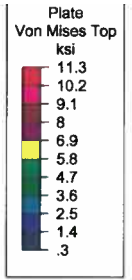
B.J.P.

CONCRETE TRAY

SINGLE PICK POINT HT=5'...

SK - 17

May 15, 2015 at 4:36 PM



Results for LC 1, DL + LL

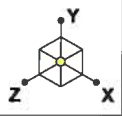
Devco Engineering

B.J.P.

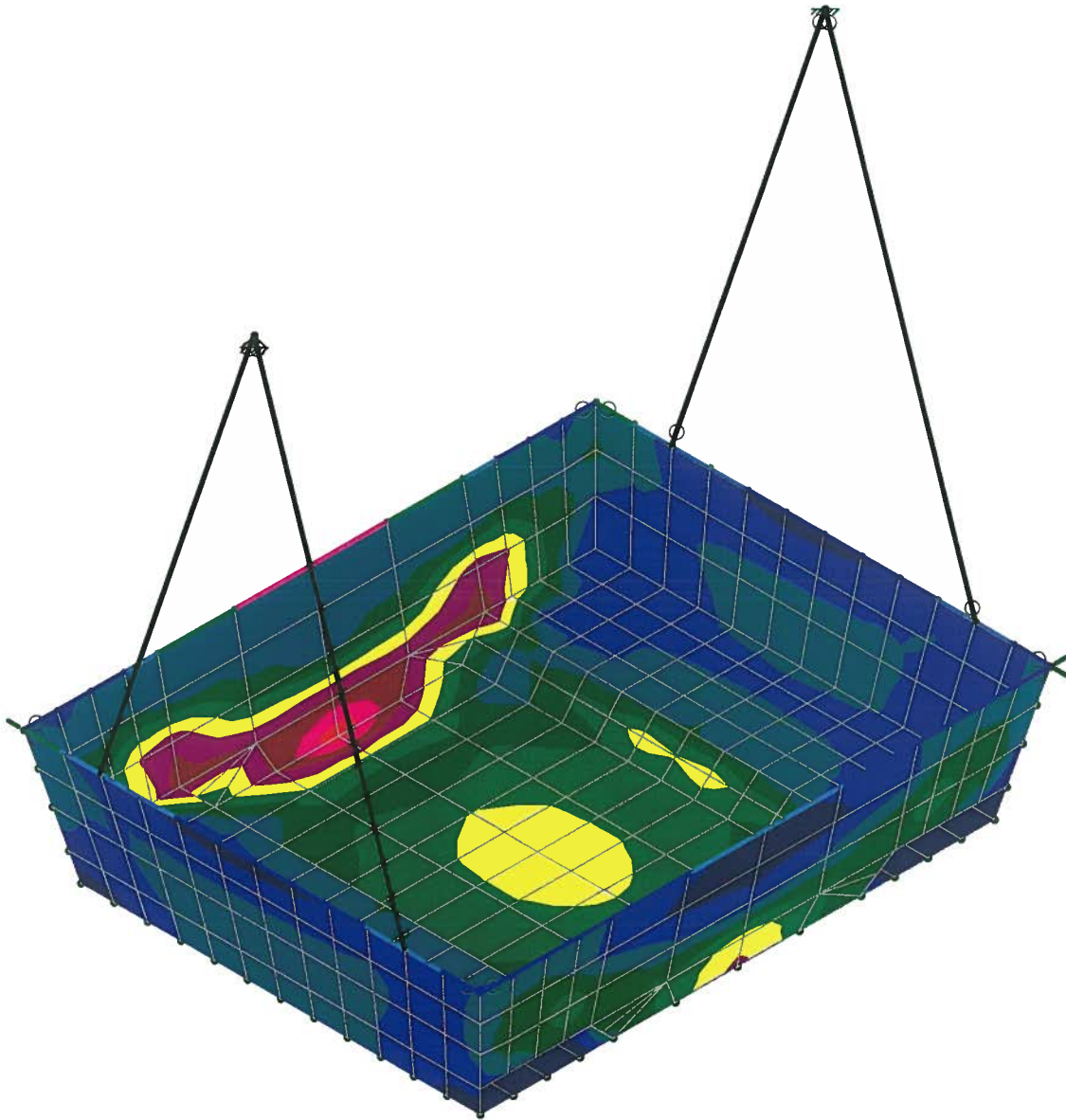
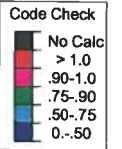
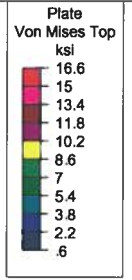
CONCRETE TRAY - - SINGLE PICK POINT HT=5'...

SK - 18

May 15, 2015 at 4:36 PM



LIVE LOAD = 12,500lb



Results for LC 1, DL + LL

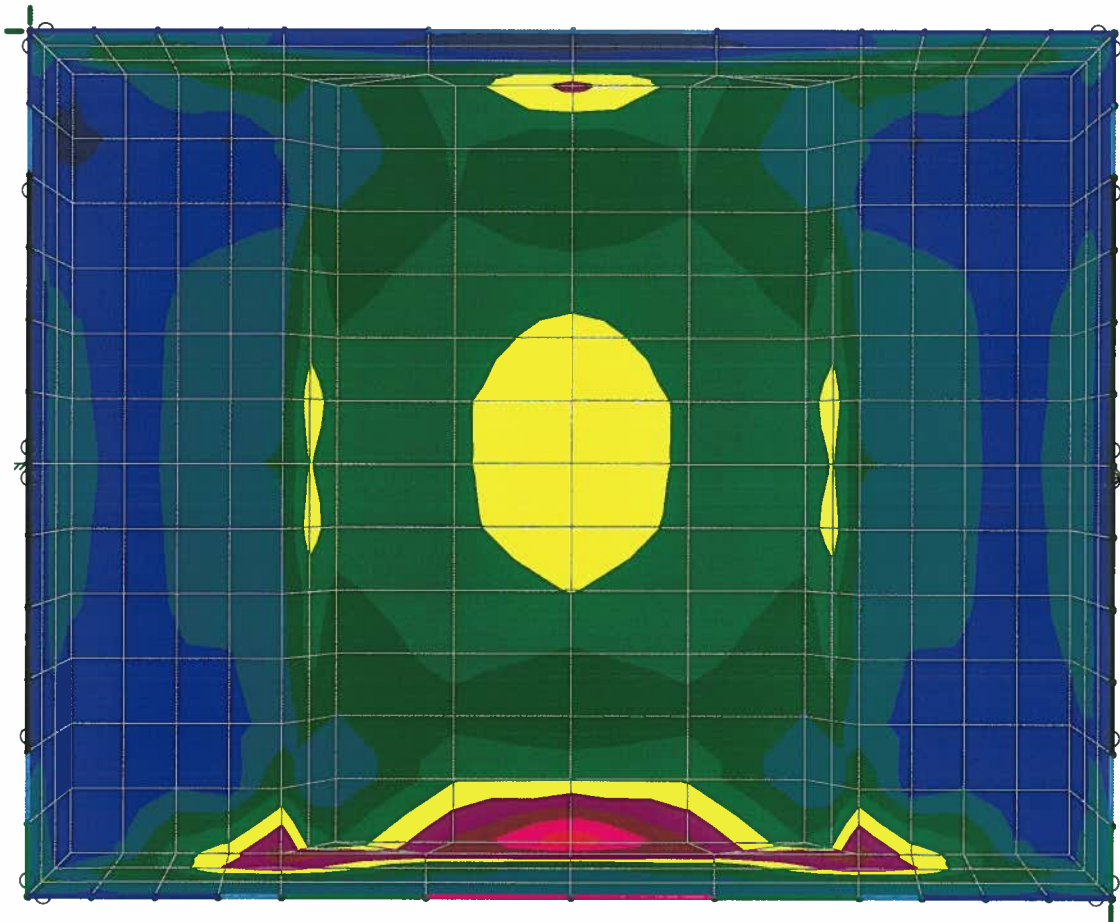
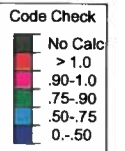
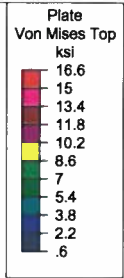
Devco Engineering

B.J.P.

Spreader Bar @ 4'-0" Ht

SK - 22

June 3, 2015 at 3:34 PM



Results for LC 1, DL + LL

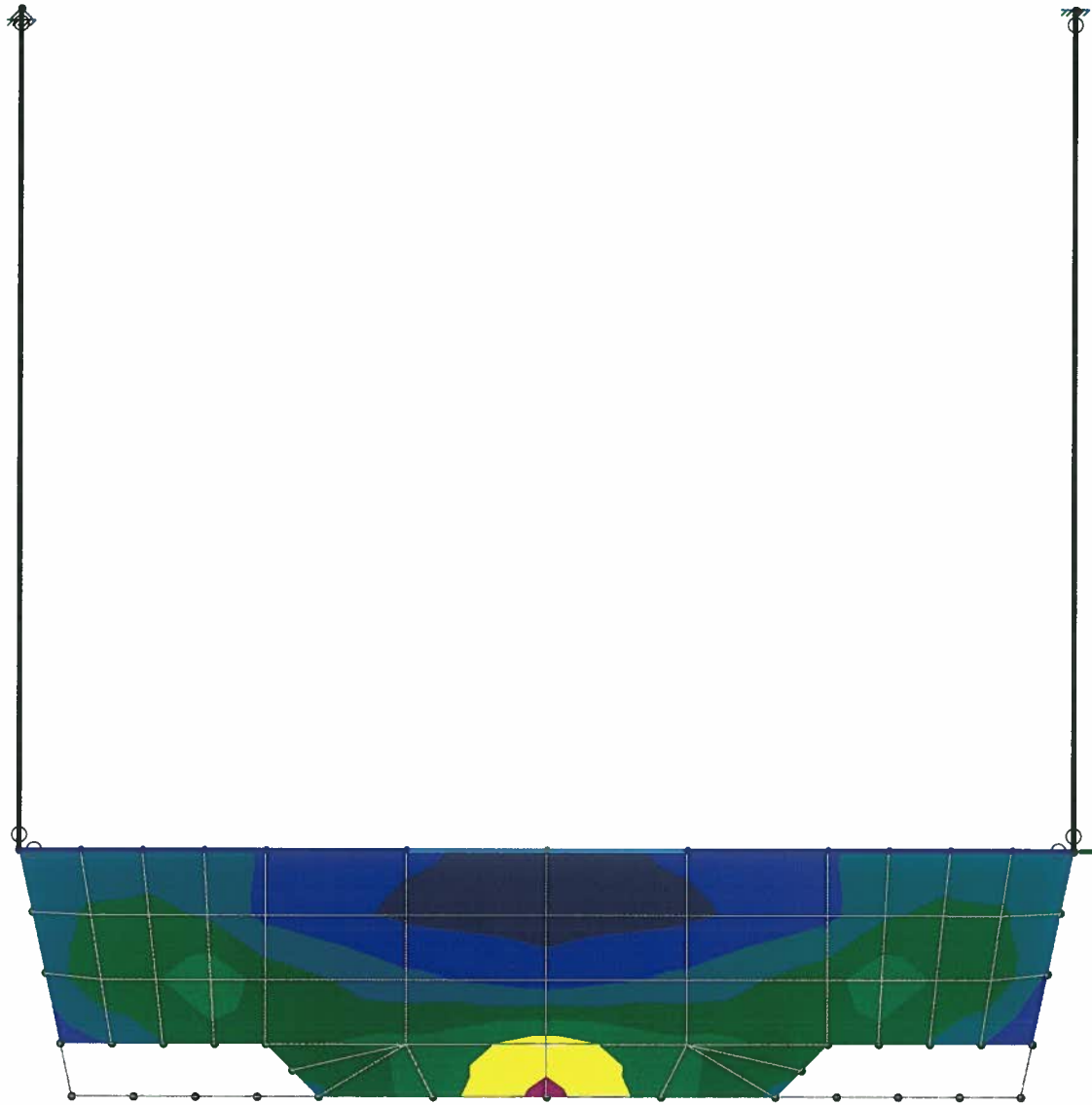
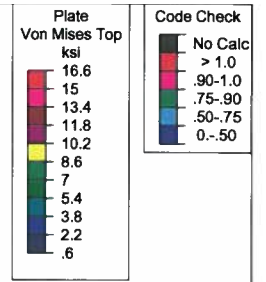
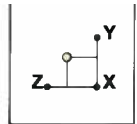
Devco Engineering

B.J.P.

- Spreader Bar @ 4'-0" Ht

SK - 23

June 3, 2015 at 3:34 PM



Results for LC 1, DL + LL

Devco Engineering

B.J.P.

- Spreader Bar @ 4'-0" Ht

SK - 24

June 3, 2015 at 3:34 PM