



Structural Design Calculations for
Consolidated Fabricators ConFab
DURAPAN®

Devco Job # 15-641
June 30, 2015



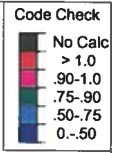
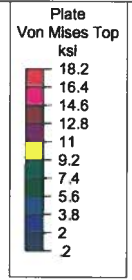
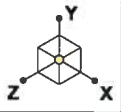


Table of Contents

Structural Design Calculations for
Consolidated Fabricators ConFab
DURAPAN® AIRBORNE HEAVY LIFT SERIES
MADE IN NORTH AMERICA

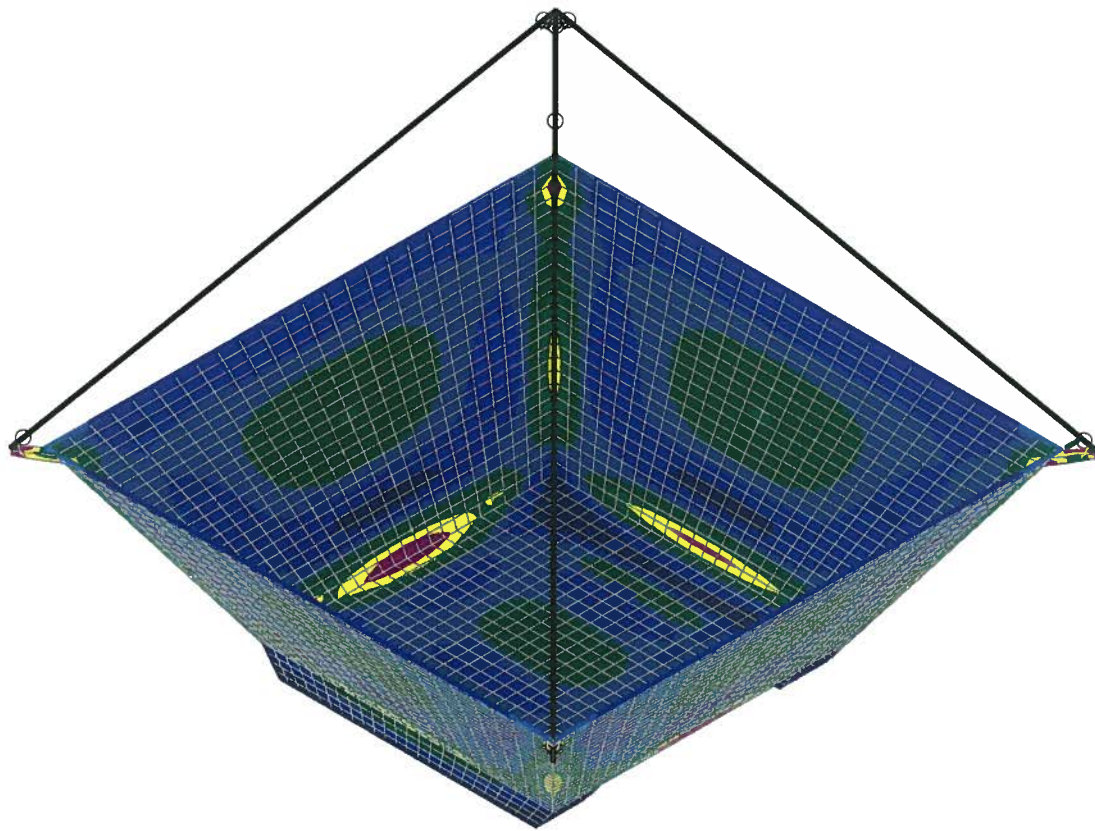
<u>Subject</u>	<u>Page</u>
727224HD Single Pick Point	SK1-SK3
727224HD Forklift Pick	SK4-SK6
727214HD Single Pick Point	SK7-SK8
727214HD Forklift Pick	SK10-SK12





LIVE LOAD = 12,500lb

F.S. = 2.0 BASED ON YIELD STRENGTH



Results for LC 1, DL + LL

Devco Engineering

B.J.P.

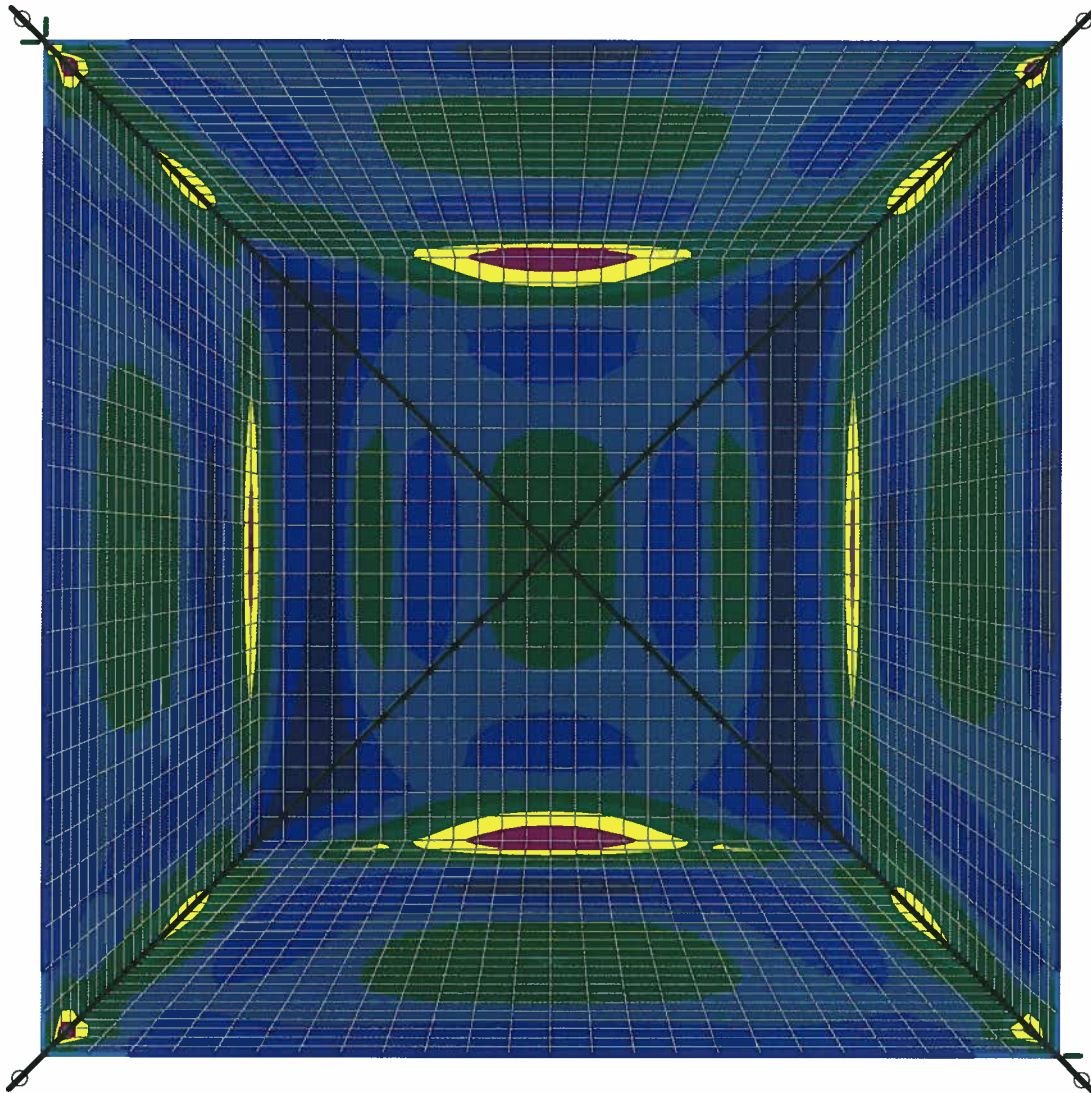
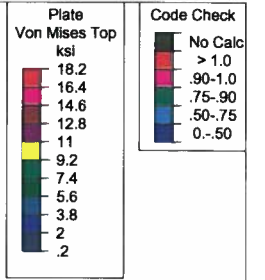
15-641

727224HD - Single Pick Point

SK - 1

June 30, 2015 at 2:27 PM

1446 _ Single Pick Point.r3d



Results for LC 1, DL + LL

Devco Engineering

B.J.P.

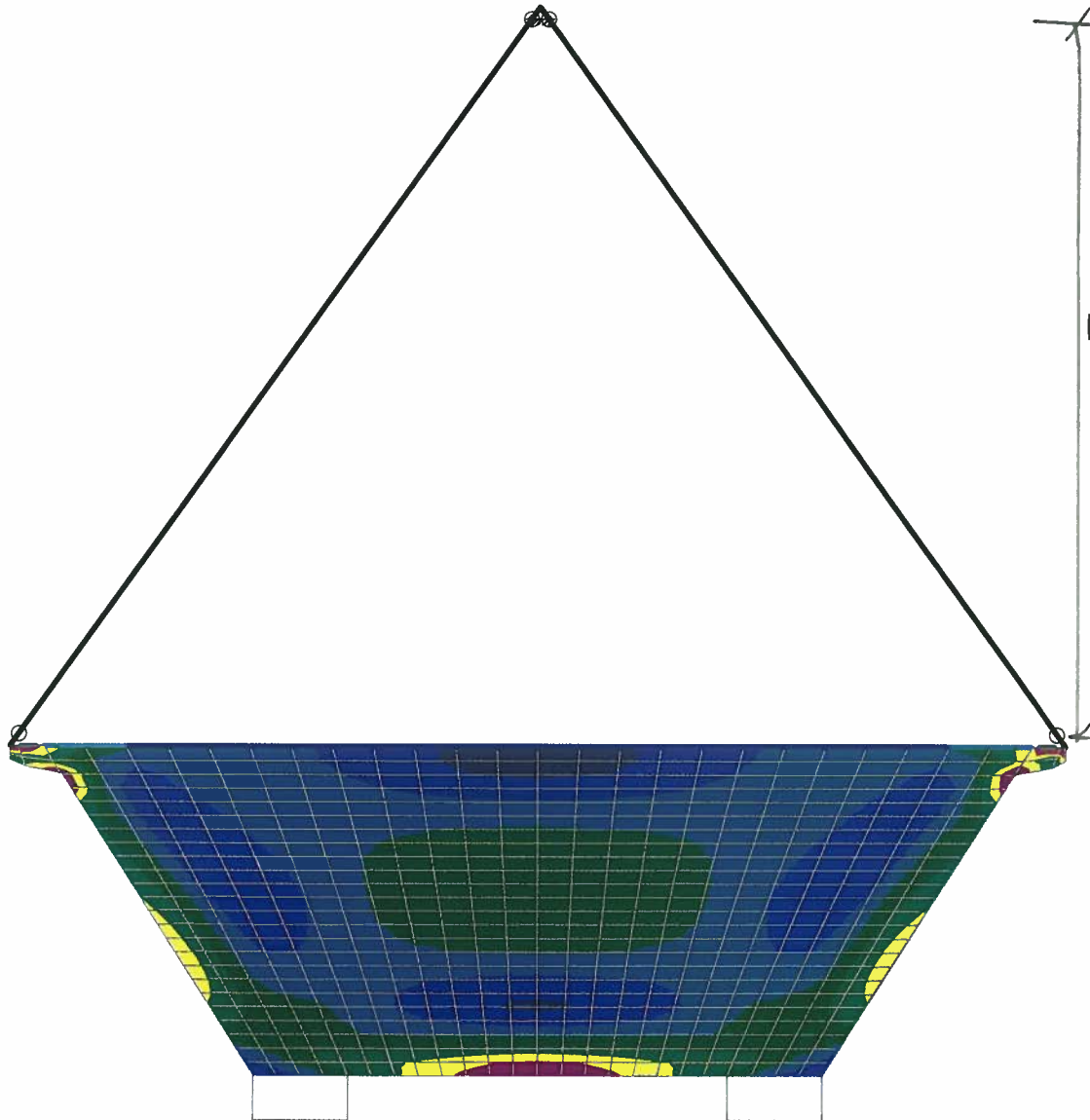
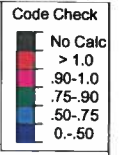
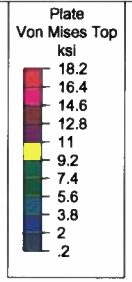
15-641

727224HD - Single Pick Point

SK - 2

June 30, 2015 at 2:27 PM

1446 _ Single Pick Point.r3d



$H_c = 4'-6''$

Results for LC 1, DL + LL

Devco Engineering

B.J.P.

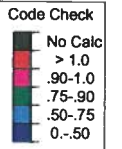
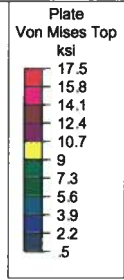
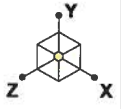
15-641

727224HD - Single Pick Point

SK - 3

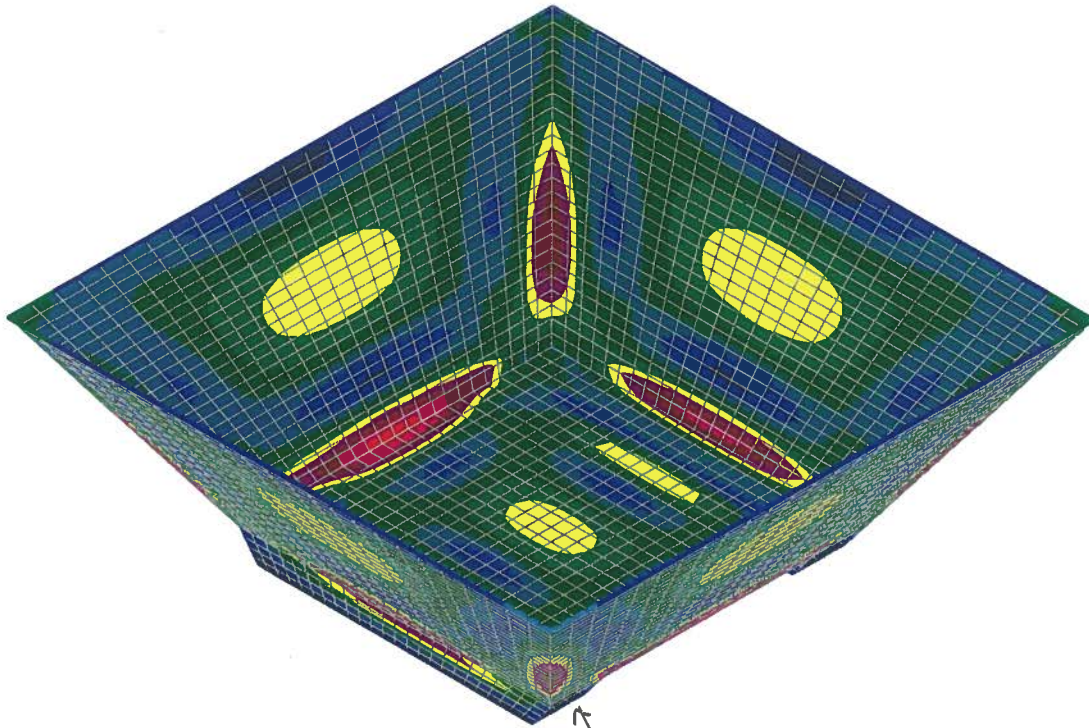
June 30, 2015 at 2:27 PM

1446_Single Pick Point.r3d



LIVE LOAD = 18,000 lb

F.S. = 2.0 BASED ON YIELD STRENGTH



← FORK TINES FULLY ENGAGED

Results for LC 1, DL + LL

Devco Engineering

B.J.P.

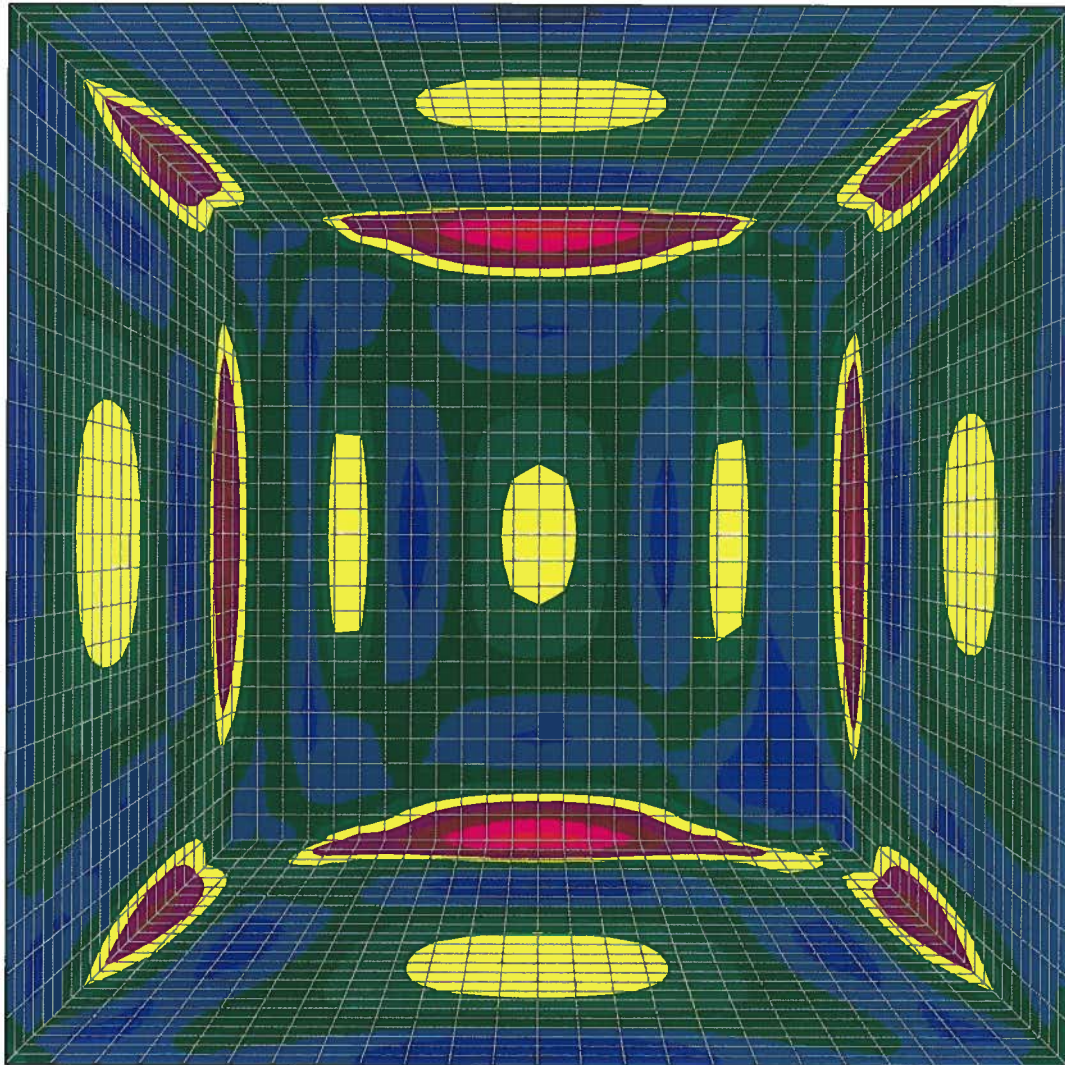
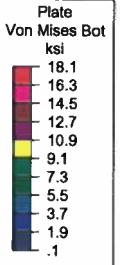
15-641

727224HD - Forklift Pick

SK - 4

June 30, 2015 at 3:00 PM

1446 _Forklift.r3d



Results for LC 1, DL + LL

Devco Engineering

B.J.P.

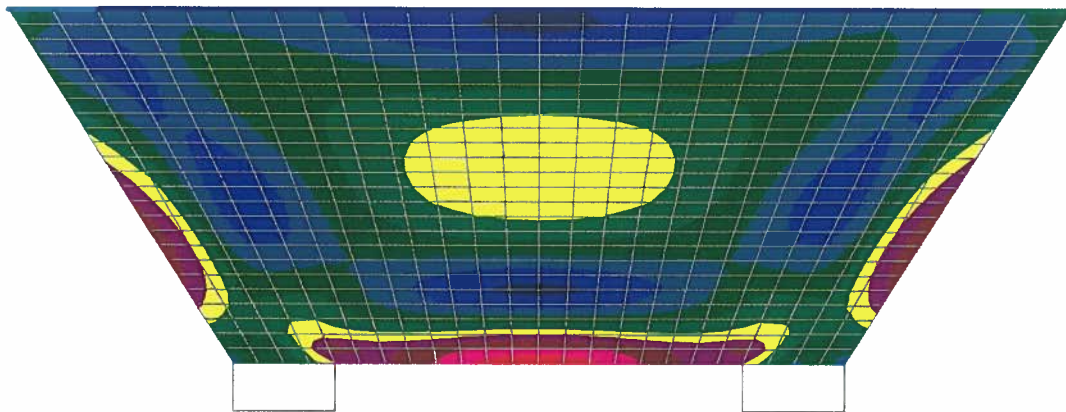
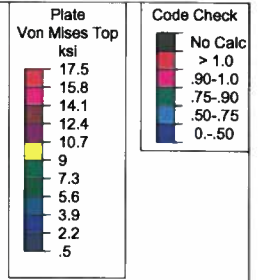
15-641

727224HD - Forklift Pick

SK - 5

June 30, 2015 at 2:40 PM

1446 _ Forklift.r3d



Results for LC 1, DL + LL

Devco Engineering

B.J.P.

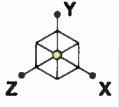
15-641

727224HD - Forklift Pick

SK - 6

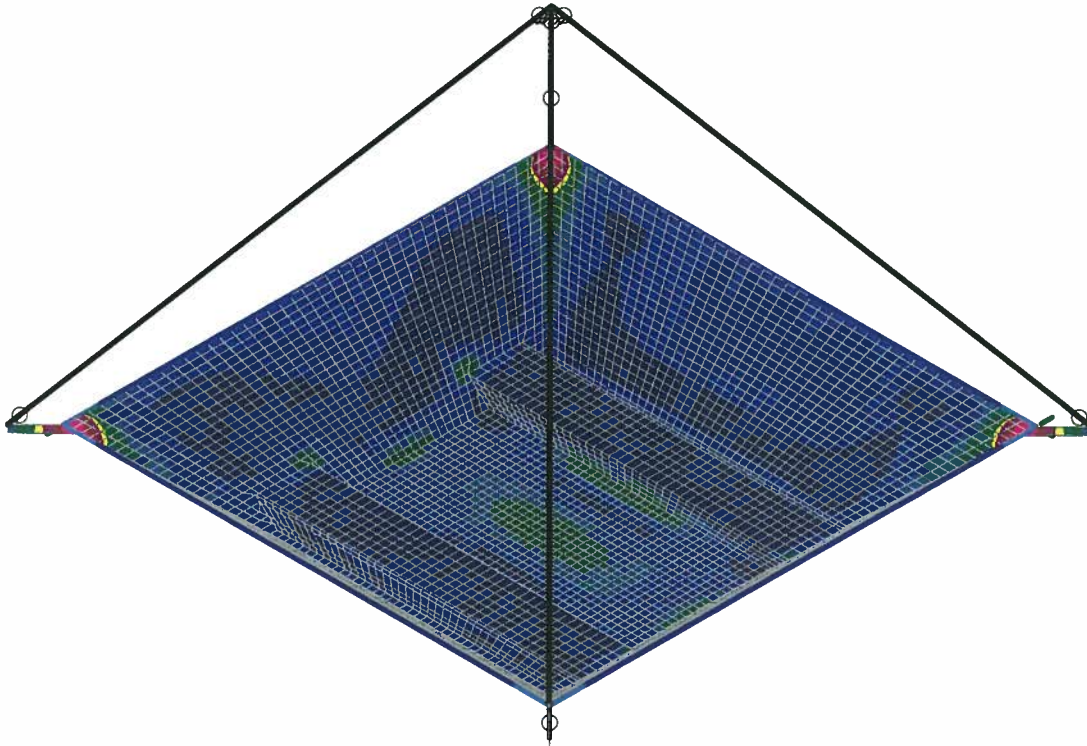
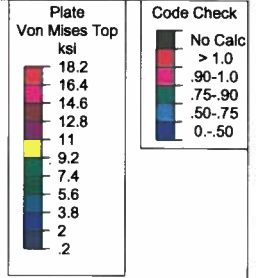
June 30, 2015 at 2:59 PM

1446 _ Forklift.r3d



LIVE LOAD = 9,600lb

F.S. = 2.0 BASED ON YIELD STRENGTH



Results for LC 1, DL + LL

Devco Engineering

B.J.P.

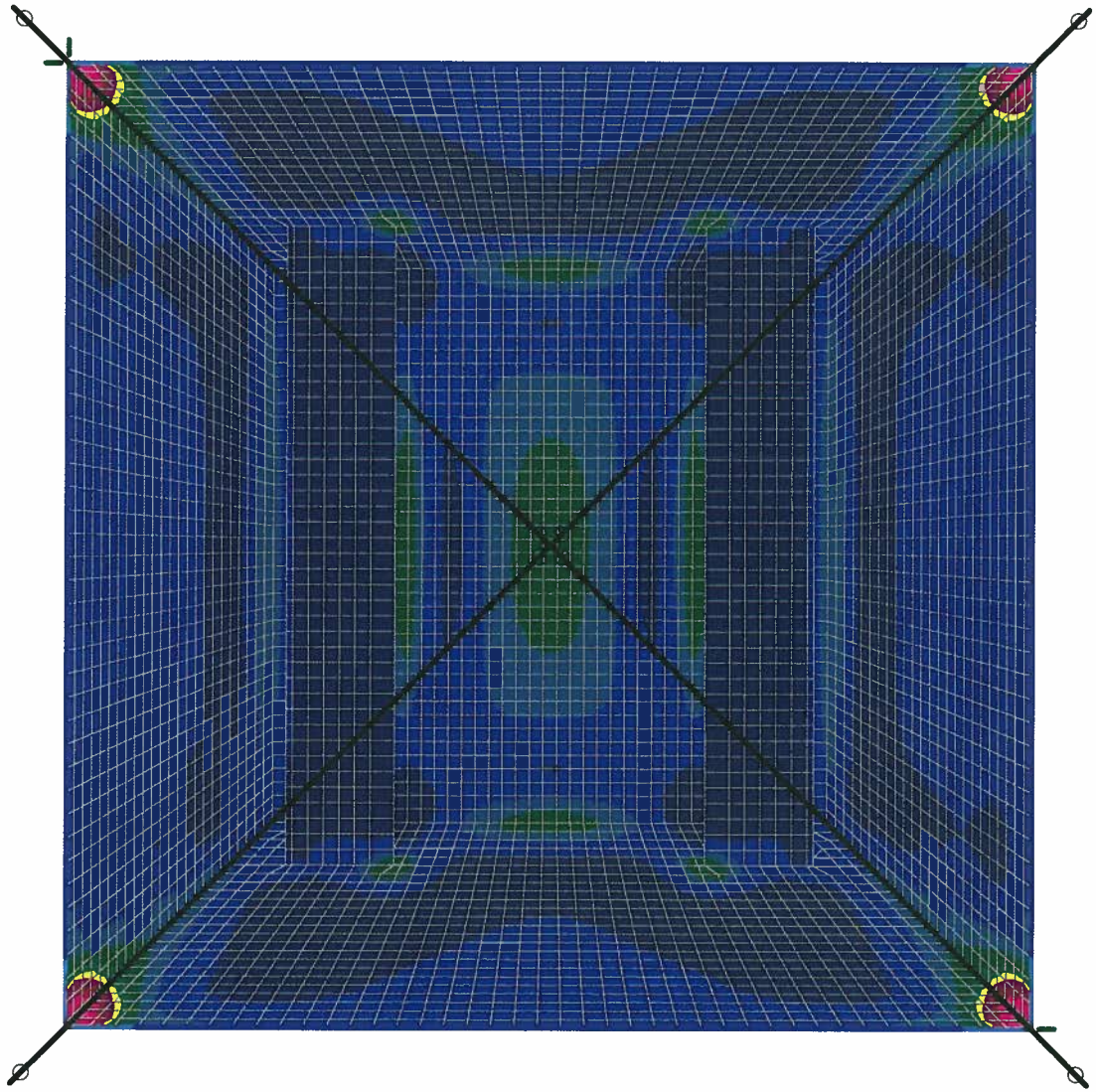
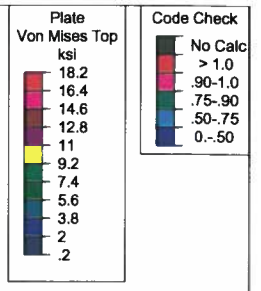
15-641

727214HD - Single Pick Point

SK - 7

June 30, 2015 at 2:56 PM

1445 _ Single Pick Point.r3d



Results for LC 1, DL + LL

Devco Engineering

B.J.P.

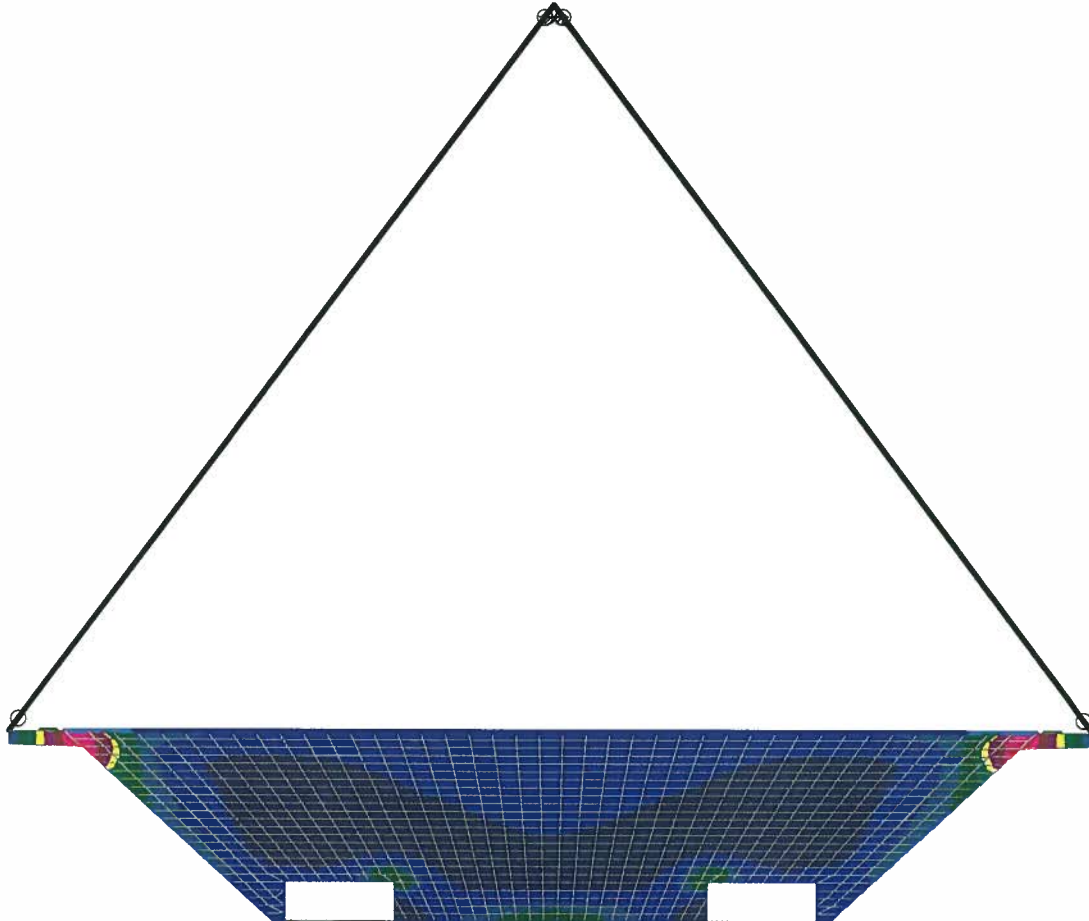
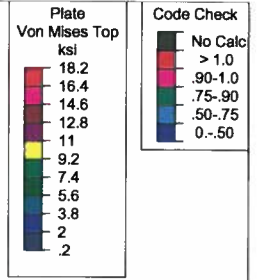
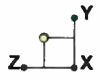
15-641

727214HD - Single Pick Point

SK - 8

June 30, 2015 at 2:55 PM

1445 _ Single Pick Point.r3d



Results for LC 1, DL + LL

Devco Engineering

B.J.P.

15-641

727214HD - Single Pick Point

SK - 9

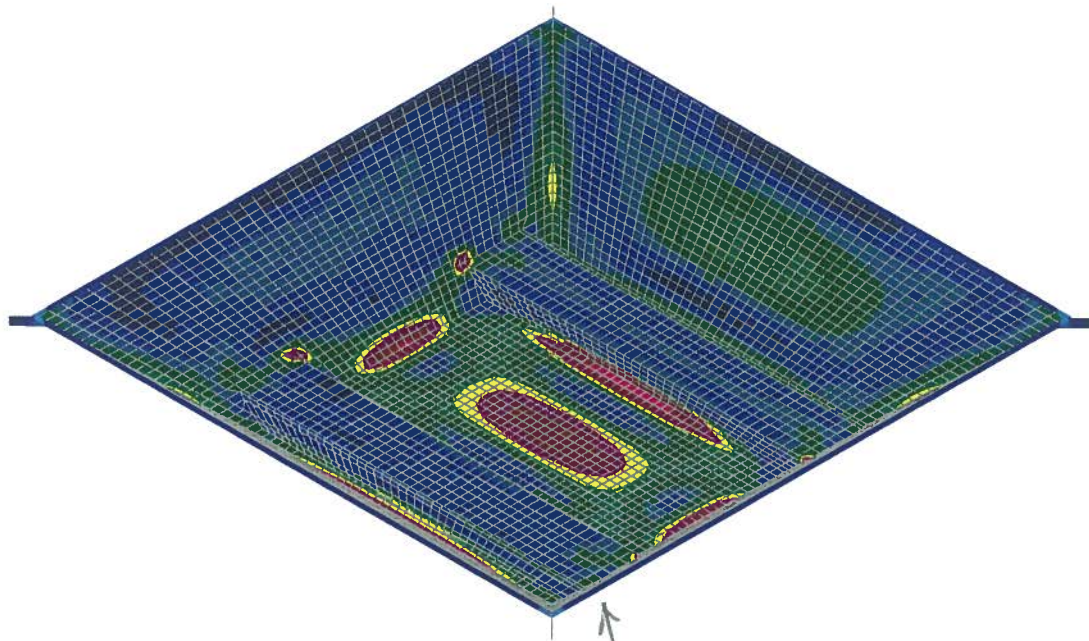
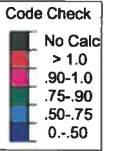
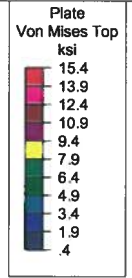
June 30, 2015 at 2:53 PM

1445 _ Single Pick Point.r3d



LIVE LOAD = 18,000lb

F.S. = 2.0 BASED ON YIELD STRENGTH



← FORK TINES FULLY ENGAGED

Results for LC 1, DL + LL

Devco Engineering

B.J.P.

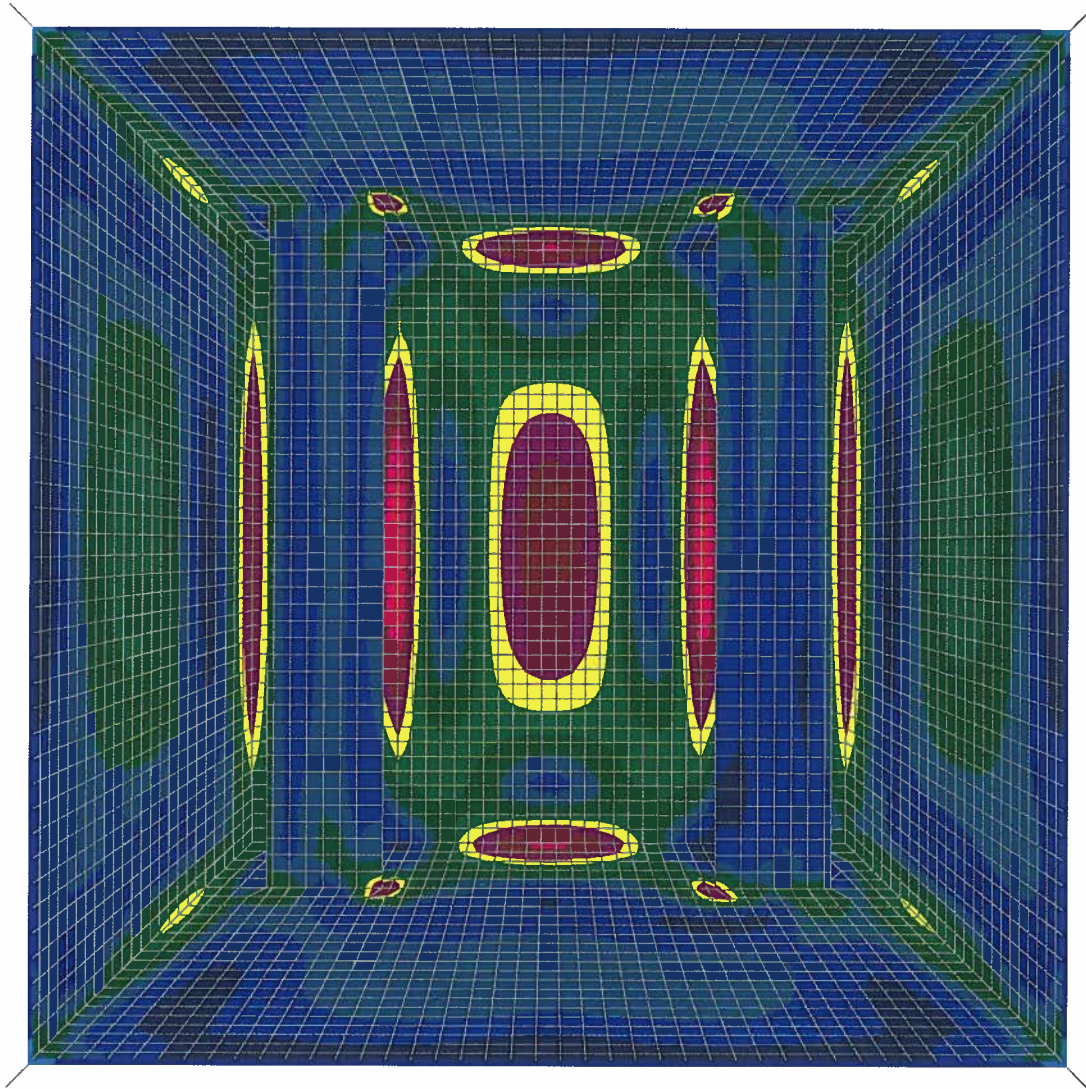
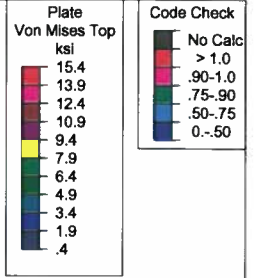
15-641

727214HD - Forklift Pick

SK - 10

June 30, 2015 at 3:01 PM

1445 _ Forklift.r3d



Results for LC 1, DL + LL

Devco Engineering

B.J.P.

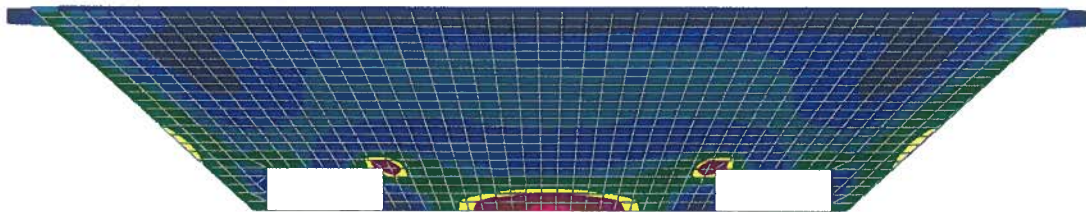
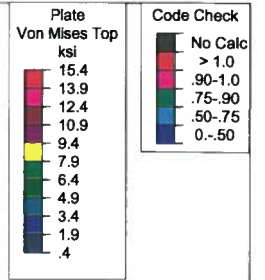
15-641

727214HD - Forklift Pick

SK - 11

June 30, 2015 at 2:57 PM

1445_Forklift.r3d



Results for LC 1, DL + LL

Devco Engineering

B.J.P.

15-641

727214HD - Forklift Pick

SK - 12

June 30, 2015 at 2:58 PM

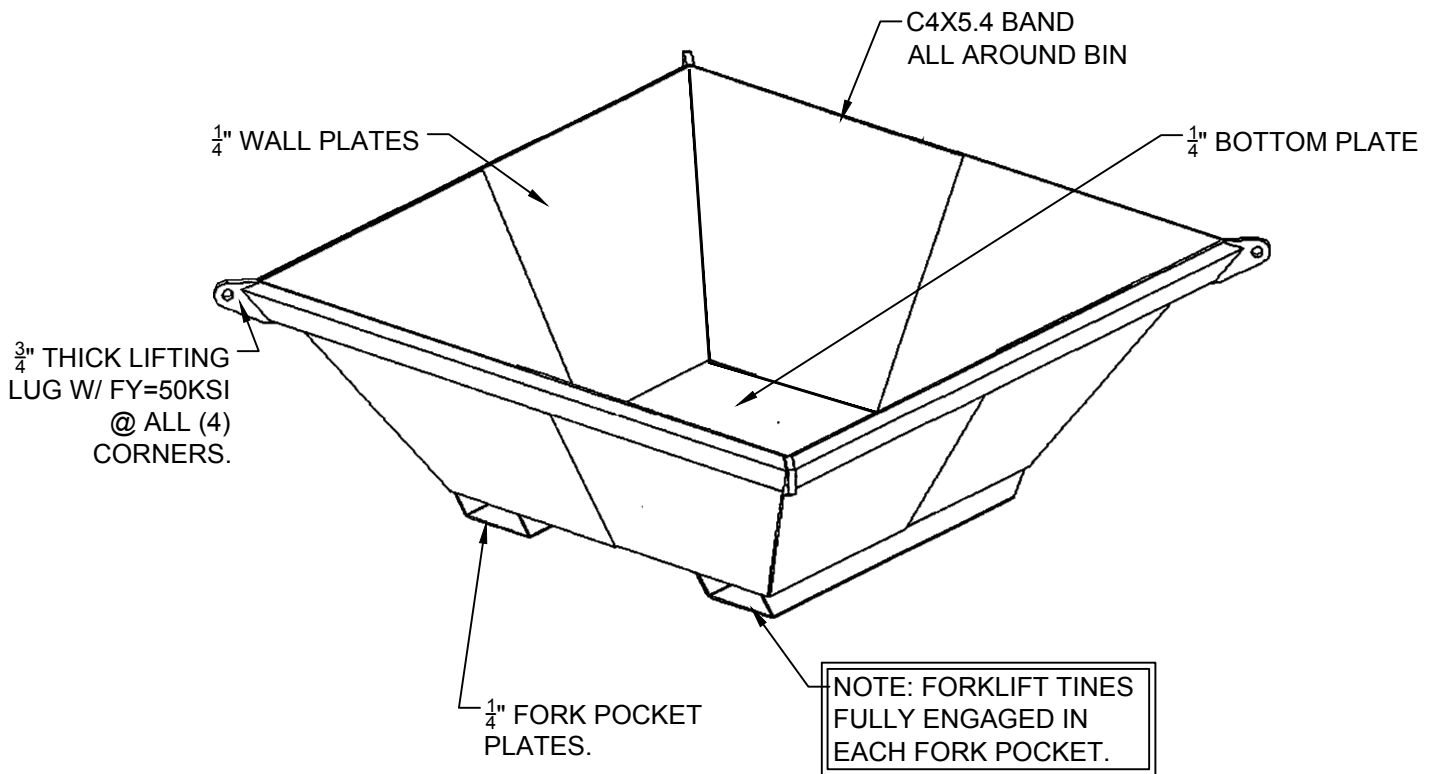
1445 _ Forklift.r3d

PROJECT: CONCRETE TRAY LIFTING RATING

PROJECT NO: 15-641

DESIGN: B.J.P.

DATE: 06/30/15



TRAY TARE WEIGHT = 911LB
ALLOWABLE LIVE LOAD = 18,000LB
ALLOWABLE STRESS BASED ON A FACTOR OF SAFETY =2.0 BASED ON YEILD STRENGTH.

727224HD

SK1

LIFTING CAPACITY WITH FORKLIFT

SCALE: N.T.S.



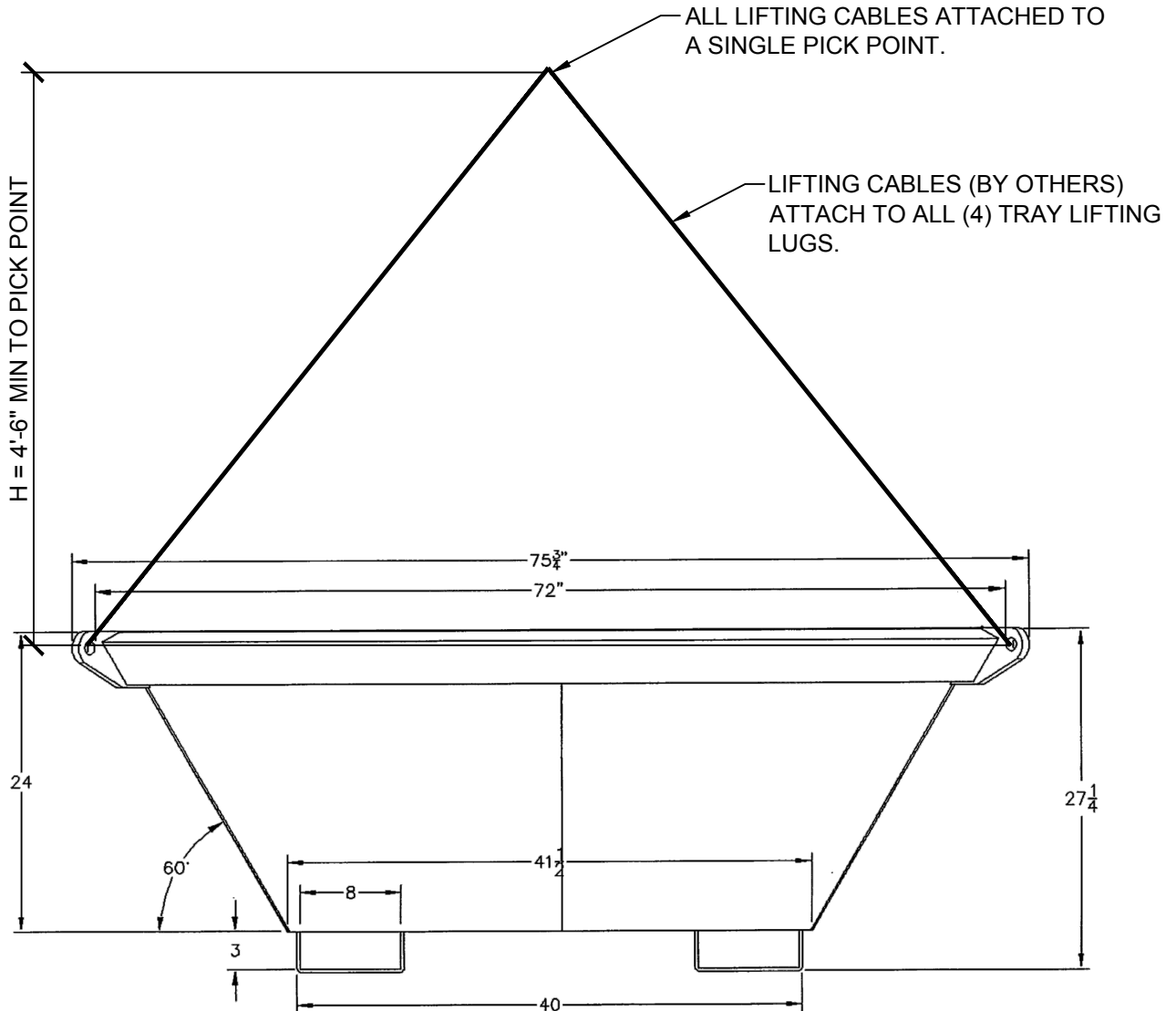
FILE: J:\15\600\15641 Concrete Nestable Trays\New folder\1446\1446 - SK1 - FORKLIFT.dwg 6/30/2015 4:20 PM - Ben

PROJECT: CONCRETE TRAY LIFTING RATING

PROJECT NO: 15-641

DESIGN: B.J.P.

DATE: 06/30/15



TRAY TARE WEIGHT = 911LB
 ALLOWABLE LIVE LOAD = 12,500LB
 ALLOWABLE STRESS BASED ON A FACTOR OF
 SAFETY = 2.0 BASED ON YEILD STRENGTH.

SK2

727224HD
 LIFTING CAPACITY WITH SINGLE PICK POINT

SCALE: N.T.S.



2015.06.30 16:41:09-07'00'

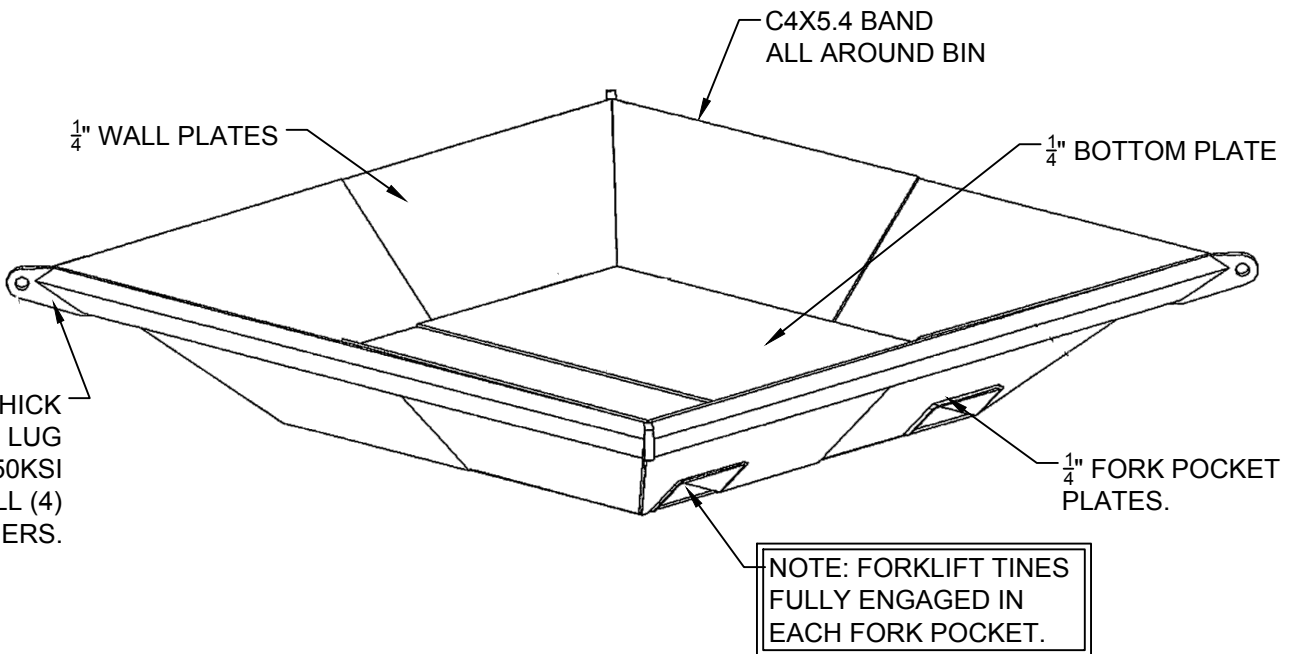
FILE: J:\15\600\15641 Concrete Nestable Trays\New folder\1446\1446 - SK2 - SINGLE PICK POINT.dwg 6/30/2015 4:18 PM - Ben

PROJECT: CONCRETE TRAY LIFTING RATING

PROJECT NO: 15-641

DESIGN: B.J.P.

DATE: 06/30/15



TRAY TARE WEIGHT = 942LB
 ALLOWABLE LIVE LOAD = 18,000LB
 ALLOWABLE STRESS BASED ON A FACTOR OF SAFETY =2.0 BASED ON YEILD STRENGTH.

SK3

727214HD
 LIFTING CAPACITY WITH FORKLIFT

SCALE: N.T.S.



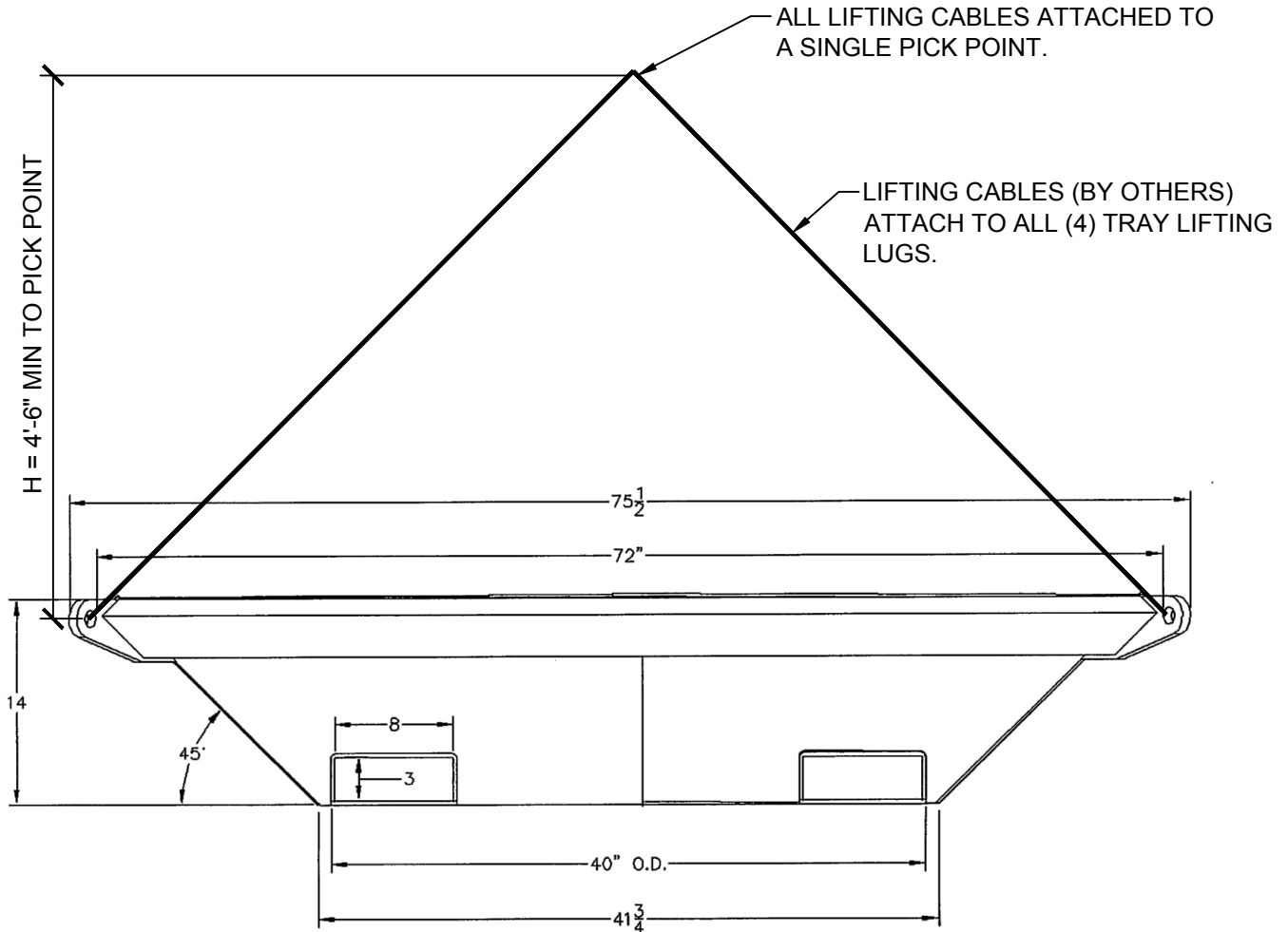
FILE: J:\15\600\15641 Concrete Nestable Trays\New folder\1445 - SK3 - FORKLIFT.dwg 6/30/2015 4:20 PM - Ben

PROJECT: CONCRETE TRAY LIFTING RATING

PROJECT NO: 15-641

DESIGN: B.J.P.

DATE: 06/30/15



TRAY TARE WEIGHT = 942LB
 ALLOWABLE LIVE LOAD = 9,600LB
 ALLOWABLE STRESS BASED ON A FACTOR OF SAFETY = 2.0 BASED ON YEILD STRENGTH.

SK4

727214HD
 LIFTING CAPACITY WITH SINGLE PICK POINT

SCALE: N.T.S.



FILE: J:\15\600\15641 Concrete Nestable Trays\New folder\1445 - SK4 - SINGLE PICK POINT.dwg 6/30/2015 4:20 PM - Ben