

THE CLASSIC

CLASSIC MPPT CHARGE CONTROLLER

The most powerful MPPT charge controller on the market at a great price!

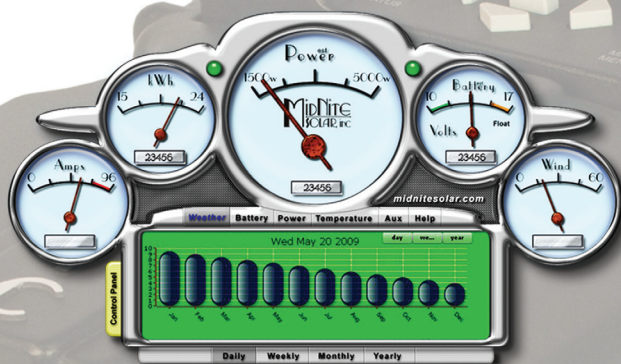
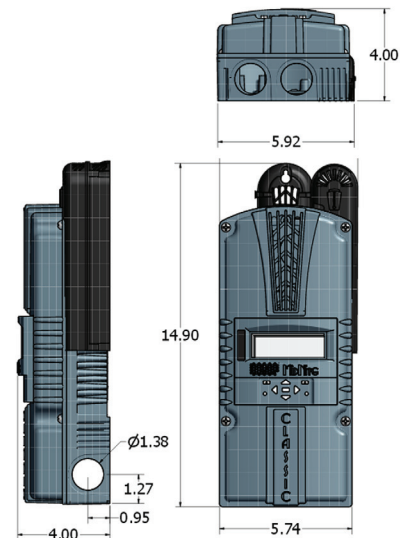
The Classic substantially increases the flexibility, features and range currently found on MPPT controllers at an incredible price. With all the Classics you receive reliability, functionality and an incredibly powerful MPPT charge controller!

PRODUCT FEATURES

- Manual and Auto EQ
- Built in DC-GFP
- Arc Fault Protection
- Communicates with the Clipper
- Communicates with the Whizbang Jr.
- Mymidnite.com: Online Status Monitoring
- Full Internet capability
- Remote and local displays possible
- 150, 200 & 250VDC operating voltage
- Exclusive HyperVOC extends VOC limits
- 380 days of daily history, 24 hours of data at 5 minute intervals
- 12-72V battery charging standard
- Solar, Wind and Hydro MPPT modes
- Communications is Modbus over Ethernet and RS232
- Parallel operation for multiple Classic systems
- ETL Listed for the US & Canada
- Made in America

The Classic Now Speaks in English!

More languages coming soon!



Included: Local Application for local network or worldwide command and control of all Classic functions.



Designed and built in the U.S.A.

CAUTION SURFACES CHARGE HOT SURFACES



www.midnitesolar.com/classic

19115 - 62nd Ave. NE., Arlington, WA. 360-403-7207 FAX: 360-691-6862

Classic 150, 200 or 250 MPPT Charge Controllers

Nominal Battery Voltage	12 Through 72 volts on Classic's
Maximum Output Current	Classic 150 = 96A on 12V, 94A on 24V and 86A on 48V battery Classic 200 = 79A on 12V, 78A on 24+48V and 65A on 72V battery Classic 250 = 61A on 12V, 62A on 24V, 55A on 48V and 43A on 72V battery
PV Open Circuit Voltage VOC <i>(NOTE: See HyperVOC at bottom)</i>	Classic150 = 150V + HyperVOC (battery voltage up to 48V) Example 150V + 48V = 198VOC Classic200 = 200V + HyperVOC (battery voltage up to 48V) Classic250 = 250V + HyperVOC (battery voltage up to 48V) <i>(NOTE: See HyperVOC at bottom)</i>
Power Conversion Efficiency	98% (Typical system)
Maximum Stand-By Self-Consumption (12V)	2.8W - 4W
Reverse Current At Night	Zero - Internal relay for reverse current
Low Battery Voltage	Low Battery voltage disconnect and re-connect of loads fully programmable with 2 Auxiliary outputs to control external load disconnect / re-connect switches
HyperVOC <i>(NOTE: See HyperVOC at bottom)</i>	Standard all models - Extended VOC range for cold climates
Arc Fault Protection	Standard on Classic, 0.25 second detect and trip speed
Ground Fault Protection	Standard all models - resettable, no fuse to blow
Charging Regulation	Bulk, Absorb, Float as well as Equalization
Battery Voltage Regulation Set Points	10-100VDC
Equalization Charging	Adjustable Voltage and Duration, Manual or Auto
PV Reverse Polarity	Protected to Max VOC (Classic MPPT Charger Controllers are fully protected from reverse current on both input and output)
Battery Reverse Polarity	Fully protected (Classic MPPT Charger Controllers are fully protected from reverse current on both input and output)
Battery Over Voltage	Fully protected (Classic MPPT Charger Controllers are fully protected from over current on both input and output)
Battery Short Circuit	Fully protected
Battery Temp Compensation	Automatic when BTS is installed, Adjustable mV per degree C per 2V cell
Programmable Auxiliary Control Output	2 Auxiliary outputs, Aux1 can be 12V out or dry contact, Aux2 is 12V out or Logic IN
Graphic Display	Graphical display
Stacking cables for Follow Me	Standard 4 conductor phone cable, no hub needed
Communications	ModBus openly published over Ethernet and RS232
Remote Display	Display (MNGP) can be relocated and a second display can be added
Remote Monitoring And Control	Local Application software included allows viewing and control from the network or over the Internet. MyMidNite.com - online status monitoring
Terminal Rating	75 C
Internet Ready	All models
Data Logging	380 days of daily history, 24 hours of data at 5 minute intervals
Wind And Hydro Applications	Standard on all models
Positive Ground Applications	Requires 2 pole input and output breakers
Operating Temperature	Minimum of -40C to 50C - Controller will auto derate as temperature rises above 25C
Environmental Rating	Indoor type IP30 (The Classic is IP22 Rated to 60529 when used with Classic Drip Shield)
Conduit knock Outs	Single 1" conduit (35.05mm) on left and right sides. Two 1" conduit (35.05mm) on bottom. Two 3/4" conduit (27.76mm) on back.
Warranty	5 Year
Weight & Dimensions	12 Lbs. (5.45 kgs) - 14.9" x 6" x 4" (378mm x 152mm x 102mm)
Shipping Dimensions HxWxD	19" x 8.5" x 5.7" (482.6mm x 215.9mm x 144.78mm)
Options	MNGP graphical display, 3ft networking cable
Certifications	Listed by ETL for US & Canada, CE Certified, FCC Class B
HyperVOC: A non-operative VOC safety zone over and above the maximum input voltage for cold climates. NOTE: Turbine short circuit protection is provided by the additional MidNite Clipper Turbine voltage and speed protection provided when used with MidNite Clipper	

To ensure proper start up and MPPT operation, the minimum initial PV input voltage should be at least 30% higher than the highest expected battery voltage.