

Instructions for Buddy Kick Smoked Windshield
SKU# 0700-1027



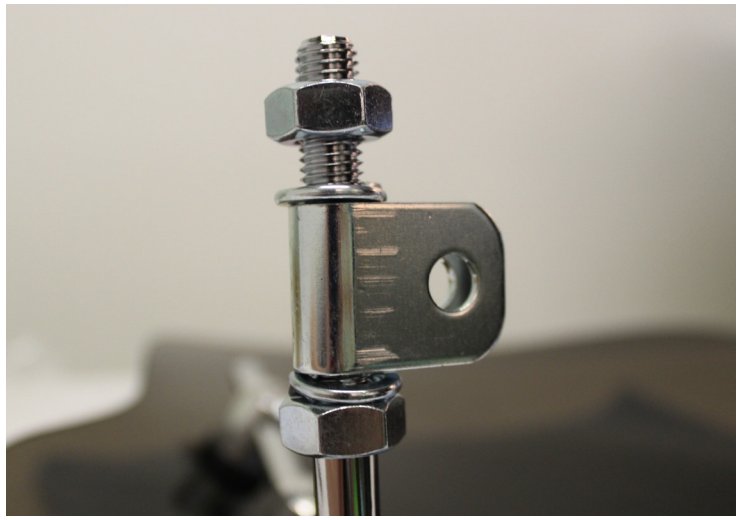
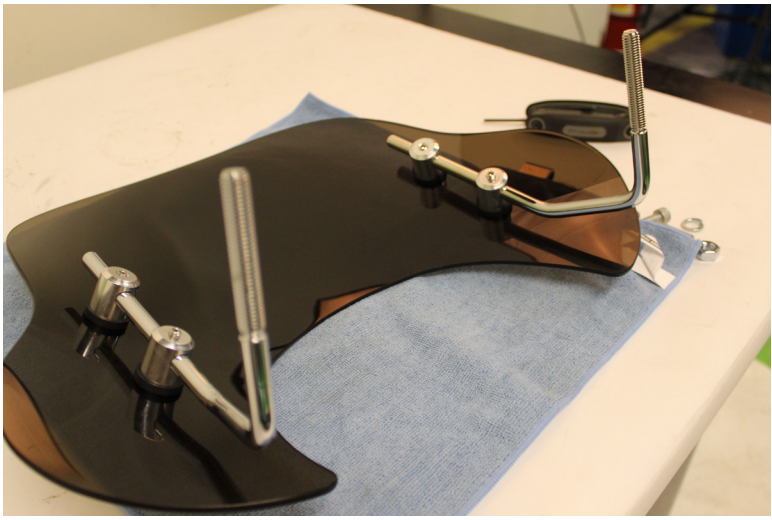
Step 1:
Remove parts from packaging



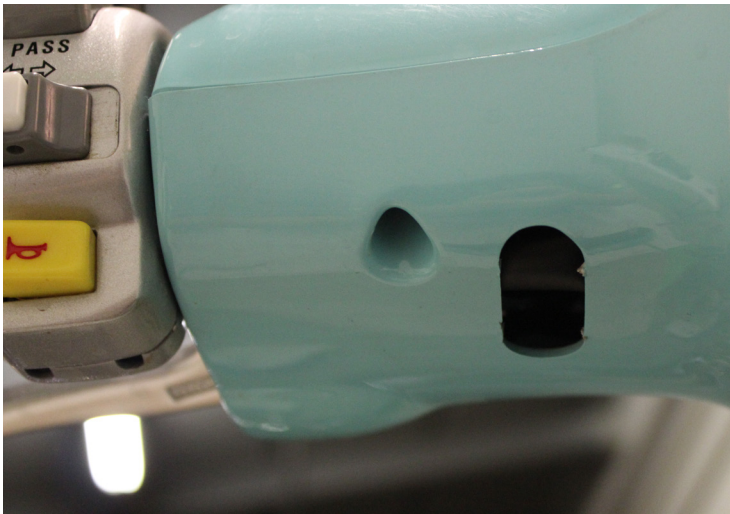
Step 2:
Open hardware packages and create 4 separate groups of parts as shown.
Begin assembling windshield mounts as illustrated.
*(Hardware shown above is different color)



Step 3:
Install hardware on windshield and align strut mount holes



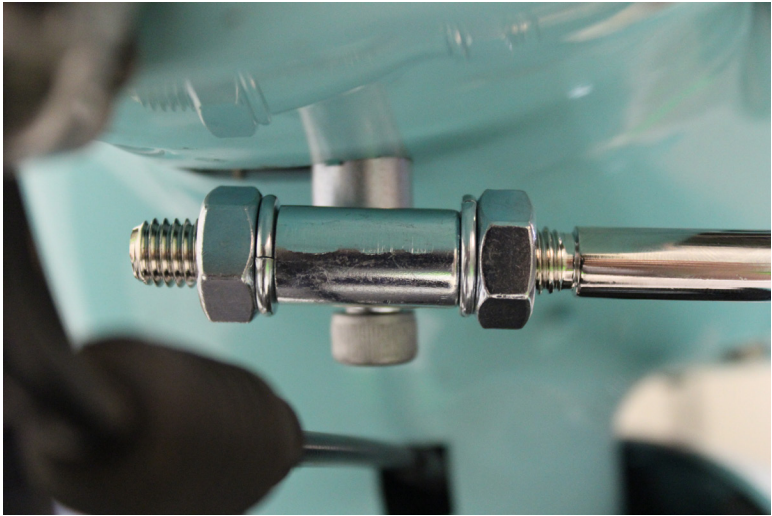
Step 4:
Assemble end of the strut



Step 5:
Punch out perforated headset pieces with a utility knife, razor blade, or dremel. Be careful not to punch too hard so as not to damage headset cover.



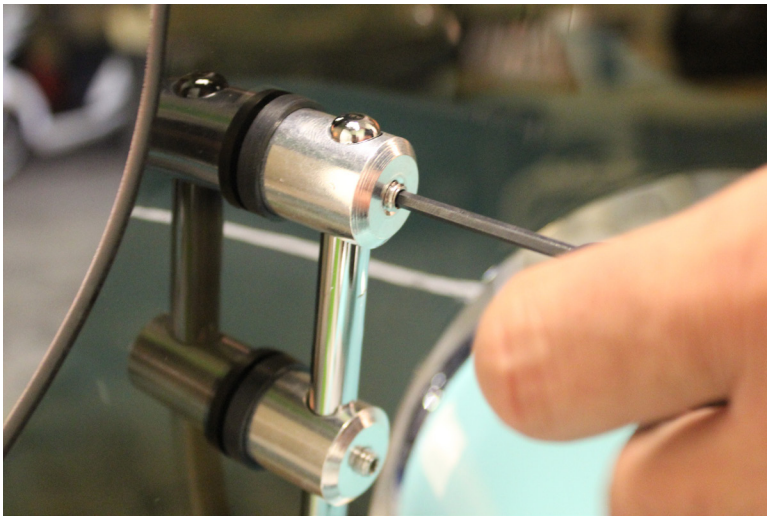
Step 6:
Insert strut into headset and screw into existing threaded frame.



Step 7:
Line up hardware with end of bracket and nut pointing towards the back of the bike.



Step 8:
Tighten strut hardware



Step 9:
Set desired windshield height and tighten up



Step 9:
This is how the installed windshield should look. The windshield height is adjustable and be set to your preference. Double check all the set screws, bolts and nuts making sure they are all tight.

Enjoy your new windshield!