

4

3

2

1

D

D

C

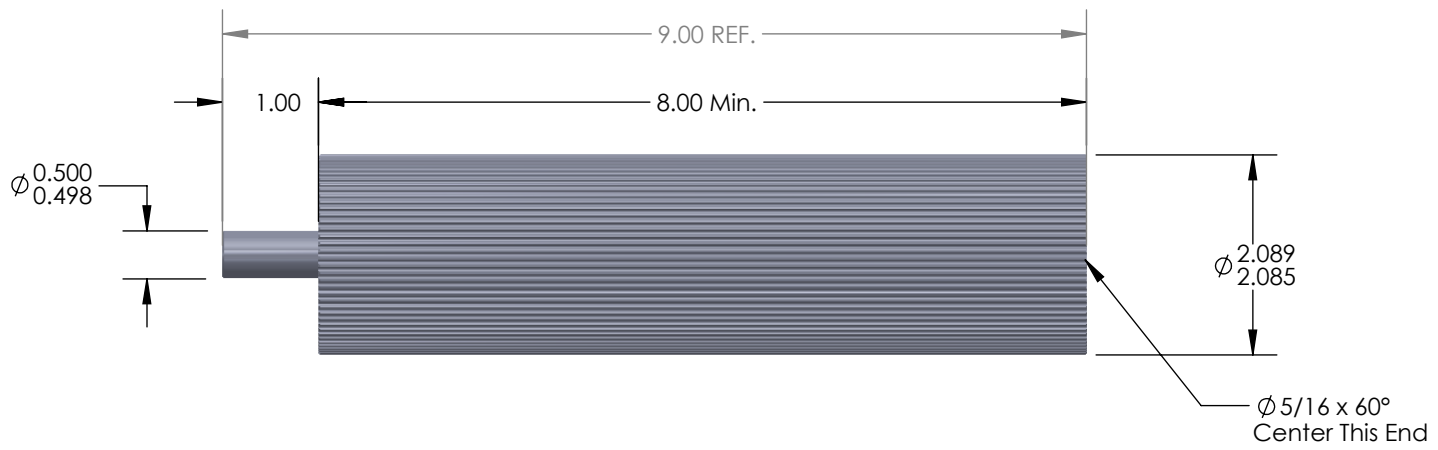
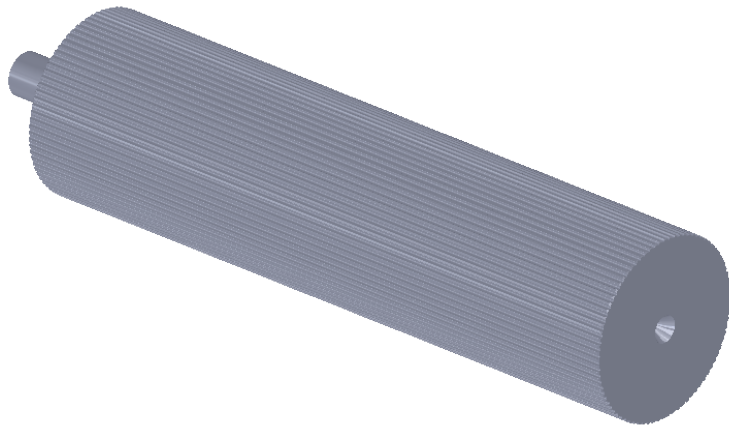
C


B

B

A

A



DO NOT SCALE DRAWING Flanges:	Tooth Information: 2mm PowerGrip GT 84 Teeth	UNLESS OTHERWISE SPECIFIED: DIMENSIONS ARE IN INCHES TOLERANCES: FRACTIONAL ±0.015 ANGULAR: MACH ±1° BEND ±2° TWO PLACE DECIMAL ±0.010 THREE PLACE DECIMAL ±0.005 SURFACE FINISH: $\sqrt{63}$	Serial # of Hob Used:	 Illinois Pulley & Gear, Inc. 611 Lunt Ave., Schaumburg, IL 60193		
	Inspection Notes:		MATERIAL 2 1/8" Rd. 6061 Aluminum FINISH None - As Machined	Flanges Installed:	TITLE: 2mm PowerGrip GT Aluminum Pulley Stock 84 Teeth	
PROPRIETARY AND CONFIDENTIAL THE INFORMATION CONTAINED IN THIS DRAWING IS THE SOLE PROPERTY OF ILLINOIS PULLEY & GEAR, INC. ANY REPRODUCTION IN PART OR AS A WHOLE WITHOUT THE WRITTEN PERMISSION OF ILLINOIS PULLEY & GEAR, INC. IS PROHIBITED.			Plating / Surface Treatment Performed:	Sundrys Installed:	COMMENTS: 1. Break all sharp corners.	
				SIZE A	DWG. NO. 84-2MR-PS-8A	REV 01
				SCALE: 1:2	WEIGHT:	SHEET 1 OF 1

4

3

2

1