

4

3

2

1

D

D

C

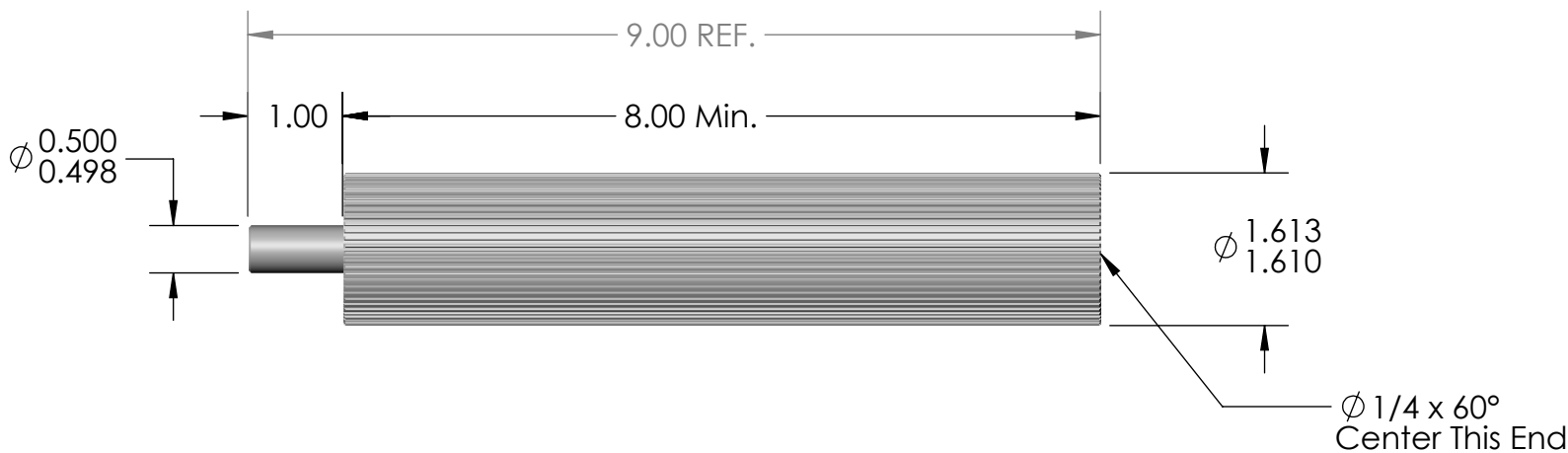
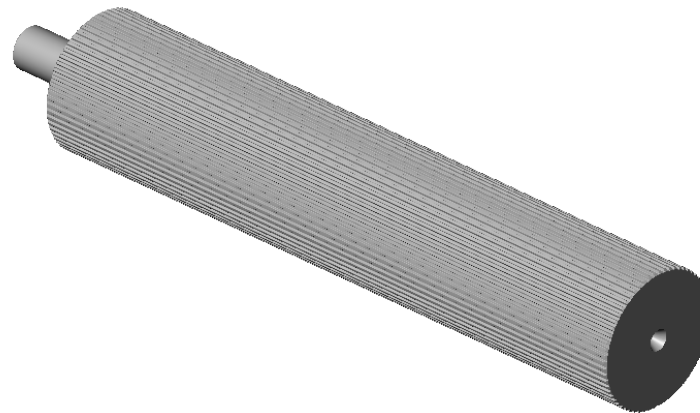
C

B

B

A

A



<b>DO NOT SCALE DRAWING</b> Flanges:	Tooth Information: MXL 64 Teeth	UNLESS OTHERWISE SPECIFIED: DIMENSIONS ARE IN INCHES TOLERANCES: FRACTIONAL ±0.015 ANGULAR: MACH ±1° BEND ±2° TWO PLACE DECIMAL ±0.010 THREE PLACE DECIMAL ±0.005 SURFACE FINISH: $\sqrt{63}$	Serial # of Hob Used:	Illinois Pulley & Gear, Inc. 611 Lunt Ave., Schaumburg, IL 60193		
	<b>PROPRIETARY AND CONFIDENTIAL</b> THE INFORMATION CONTAINED IN THIS DRAWING IS THE SOLE PROPERTY OF ILLINOIS PULLEY & GEAR, INC. ANY REPRODUCTION IN PART OR AS A WHOLE WITHOUT THE WRITTEN PERMISSION OF ILLINOIS PULLEY & GEAR, INC. IS PROHIBITED.		Inspection Notes:	MATERIAL 1 3/4" Rd. 6061 Aluminum	Flanges Installed:	TITLE: MXL Aluminum Pulley Stock 64 Teeth
FINISH None - As Machined		Plating / Surface Treatment Performed:		SIZE <b>A</b>	DWG. NO. 64-MXL-PS-8A	REV 01
		Sundrys Installed:		COMMENTS: 1. Break all sharp corners.	SCALE: 1:2	WEIGHT:

4

3

2

1