

4

3

2

1

D

D

C

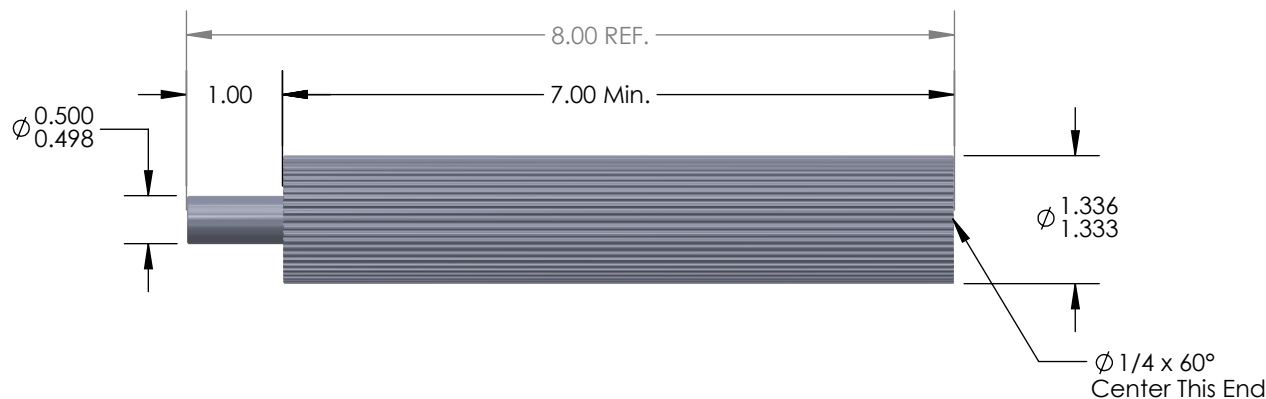
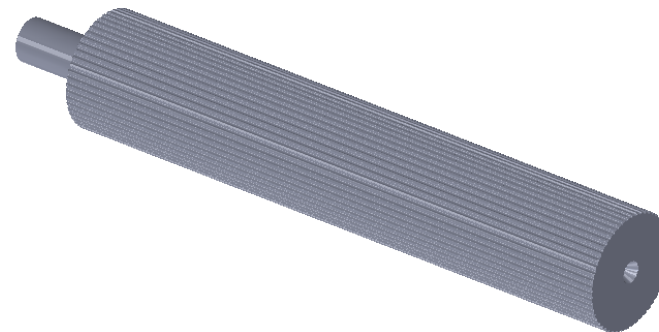
C

B

B

A

A

**DO NOT SCALE DRAWING**

Flanges:

Tooth Information:

2mm PowerGrip GT  
54 Teeth

UNLESS OTHERWISE SPECIFIED:

DIMENSIONS ARE IN INCHES  
TOLERANCES:  
FRACTIONAL  $\pm 0.015$   
ANGULAR: MACH  $\pm 1^\circ$  BEND  $\pm 2^\circ$   
TWO PLACE DECIMAL  $\pm 0.010$   
THREE PLACE DECIMAL  $\pm 0.005$ SURFACE FINISH:  $\sqrt{63}$ MATERIAL  
1 3/8" Rd. 6061 AluminumFINISH  
None - As Machined

Serial #. of Hob Used:

Flanges Installed:

Plating / Surface Treatment Performed:

Sundries Installed:

COMMENTS:

1. Break all sharp corners.



Illinois Pulley &amp; Gear, Inc.

611 Lunt Ave., Schaumburg, IL 60193

TITLE:

2mm PowerGrip GT  
Aluminum Pulley Stock  
54 Teeth

SIZE

A

DWG. NO.

54-2MR-PS-7A

REV

01

SCALE: 1:2

WEIGHT:

SHEET 1 OF 1

Inspection Notes:

**PROPRIETARY AND CONFIDENTIAL**THE INFORMATION CONTAINED IN THIS  
DRAWING IS THE SOLE PROPERTY OF  
ILLINOIS PULLEY & GEAR, INC. ANY  
REPRODUCTION IN PART OR AS A WHOLE  
WITHOUT THE WRITTEN PERMISSION OF  
ILLINOIS PULLEY & GEAR, INC. IS  
PROHIBITED.

4

3

2

1