

4

3

2

1

D

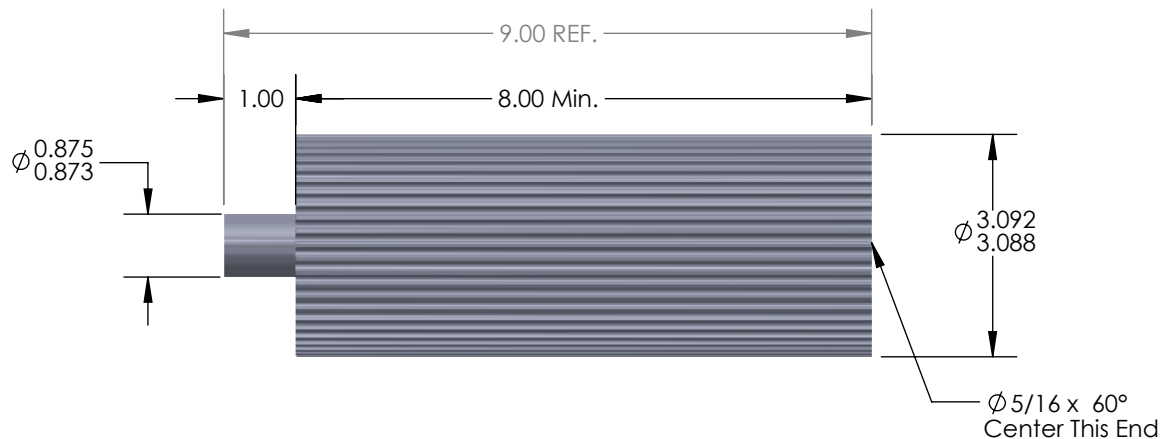
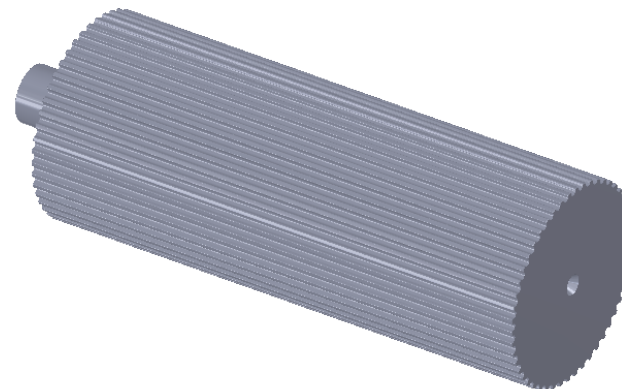
D


C

C

B

B



<b>DO NOT SCALE DRAWING</b>	Tooth Information: 5mm PowerGrip GT 50 Teeth	UNLESS OTHERWISE SPECIFIED: DIMENSIONS ARE IN INCHES TOLERANCES: FRACTIONAL ±0.015 ANGULAR: MACH ±1° BEND ±2° TWO PLACE DECIMAL ±0.010 THREE PLACE DECIMAL ±0.005 SURFACE FINISH: $\sqrt{63}$	<u>Serial # of Hob Used:</u>	 Illinois Pulley & Gear, Inc. 611 Lunt Ave., Schaumburg, IL 60193 TITLE: 5mm PowerGrip GT Aluminum Pulley Stock 50 Teeth
Flanges:	Inspection Notes:	MATERIAL 3 1/4" Rd. 6061 Aluminum FINISH None - As Machined	Flanges Installed: <input type="text"/>	
<b>PROPRIETARY AND CONFIDENTIAL</b> THE INFORMATION CONTAINED IN THIS DRAWING IS THE SOLE PROPERTY OF ILLINOIS PULLEY & GEAR, INC. ANY REPRODUCTION IN PART OR AS A WHOLE WITHOUT THE WRITTEN PERMISSION OF ILLINOIS PULLEY & GEAR, INC. IS PROHIBITED.			<u>Plating / Surface Treatment Performed:</u>	
				Sundries Installed: <input type="text"/>
			COMMENTS: 1. Break all sharp corners.	SCALE: 1:2 WEIGHT: SHEET 1 OF 1

4

3

2

1

A

A