

4

3

2

1

D

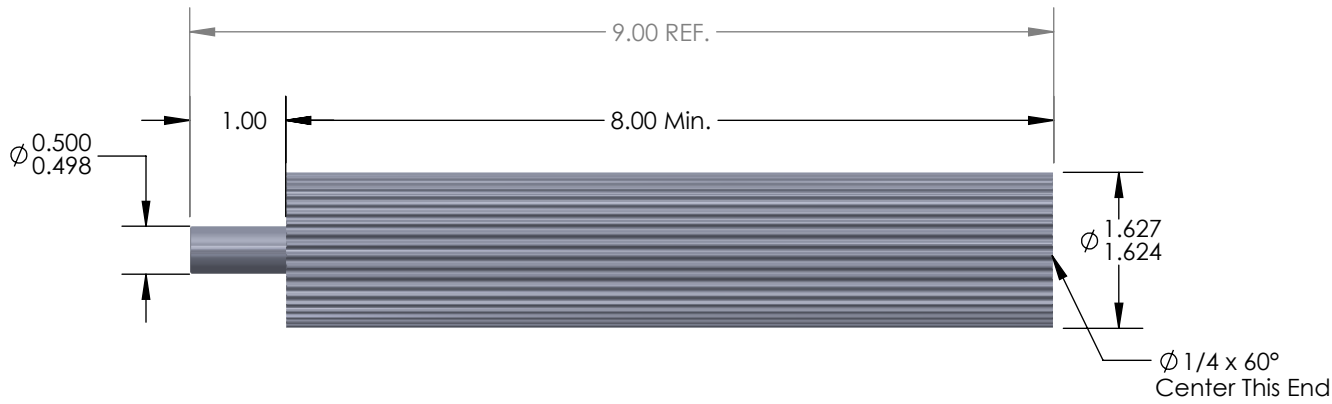
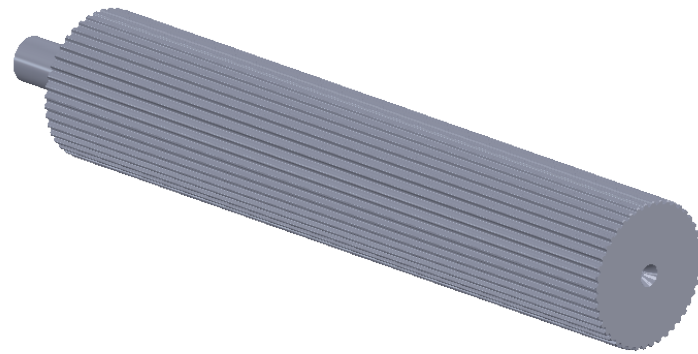
D

C

C

B

B



<b>DO NOT SCALE DRAWING</b> Flanges:	Tooth Information: 3mm PowerGrip GT 44 Teeth	UNLESS OTHERWISE SPECIFIED: DIMENSIONS ARE IN INCHES TOLERANCES: FRACTIONAL ±0.015 ANGULAR: MACH ±1° BEND ±2° TWO PLACE DECIMAL ±0.010 THREE PLACE DECIMAL ±0.005 SURFACE FINISH: $\sqrt{63}$	Serial # of Hob Used:	Illinois Pulley & Gear, Inc. 611 Lunt Ave., Schaumburg, IL 60193 TITLE: 3mm PowerGrip GT Aluminum Pulley Stock 44 Teeth
	Inspection Notes:		MATERIAL 1 3/4" Rd. 6061 Aluminum FINISH None - As Machined	
<b>PROPRIETARY AND CONFIDENTIAL</b> THE INFORMATION CONTAINED IN THIS DRAWING IS THE SOLE PROPERTY OF ILLINOIS PULLEY & GEAR, INC. ANY REPRODUCTION IN PART OR AS A WHOLE WITHOUT THE WRITTEN PERMISSION OF ILLINOIS PULLEY & GEAR, INC. IS PROHIBITED.			Plating / Surface Treatment Performed:	SIZE <b>A</b> DWG. NO. 44-3MR-PS-8A REV 01
			Sundries Installed:	SCALE: 1:2 WEIGHT: SHEET 1 OF 1
			COMMENTS: 1. Break all sharp corners.	

4

3

2

1

A

A