

4

3

2

1

D

D

C

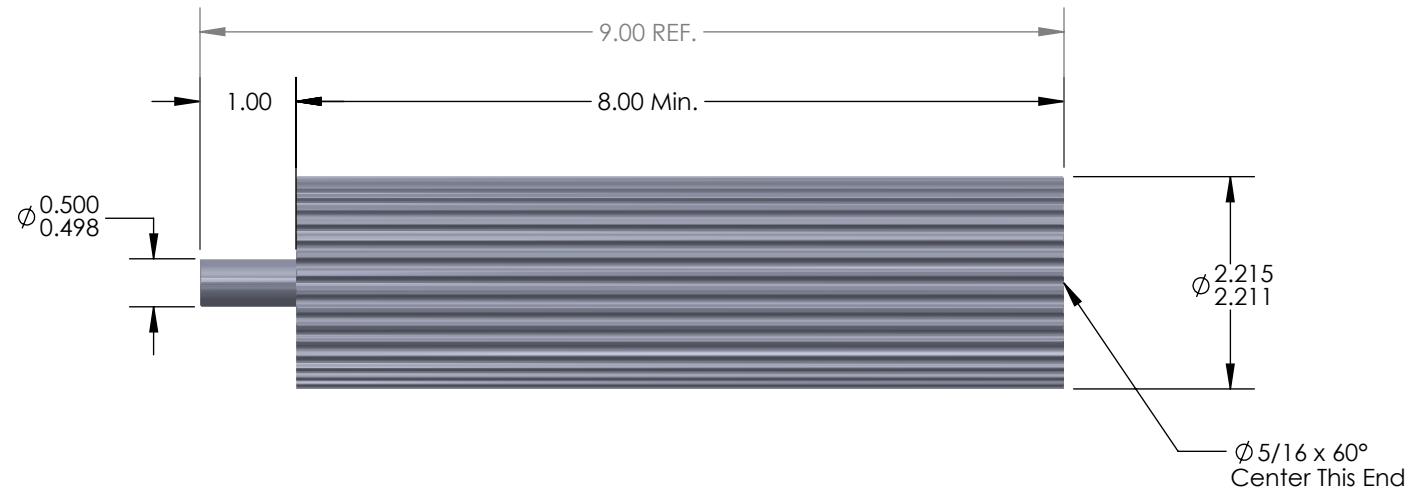
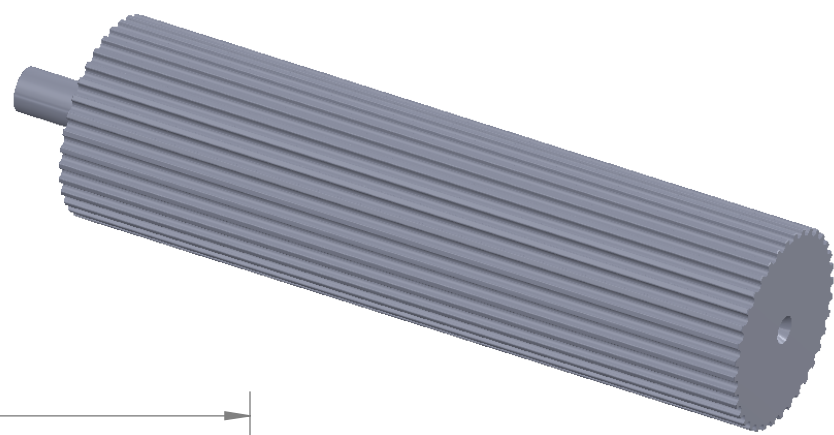
C

B

B

A

A



DO NOT SCALE DRAWING Flanges:	Tooth Information: 5mm HTD 36 Teeth	UNLESS OTHERWISE SPECIFIED: DIMENSIONS ARE IN INCHES TOLERANCES: FRACTIONAL ± 0.015 ANGULAR: MACH $\pm 1^\circ$ BEND $\pm 2^\circ$ TWO PLACE DECIMAL ± 0.010 THREE PLACE DECIMAL ± 0.005 SURFACE FINISH: $\sqrt{63}$	Serial # of Hob Used:	Illinois Pulley & Gear, Inc. 611 Lunt Ave., Schaumburg, IL 60193 TITLE: 5mm HTD Aluminum Pulley Stock 36 Teeth		
	Inspection Notes:		Flanges Installed:		Plating / Surface Treatment Performed:	
PROPRIETARY AND CONFIDENTIAL THE INFORMATION CONTAINED IN THIS DRAWING IS THE SOLE PROPERTY OF ILLINOIS PULLEY & GEAR, INC. ANY REPRODUCTION IN PART OR AS A WHOLE WITHOUT THE WRITTEN PERMISSION OF ILLINOIS PULLEY & GEAR, INC. IS PROHIBITED.		MATERIAL 2 1/4" Rd. 6061 Aluminum FINISH None - As Machined	Sundries Installed:	SIZE A	DWG. NO. 36-5M-PS-8A	REV 01
			COMMENTS: 1. Break all sharp corners.	SCALE: 1:2	WEIGHT:	SHEET 1 OF 1

4

3

2

1