

4

3

2

1

D

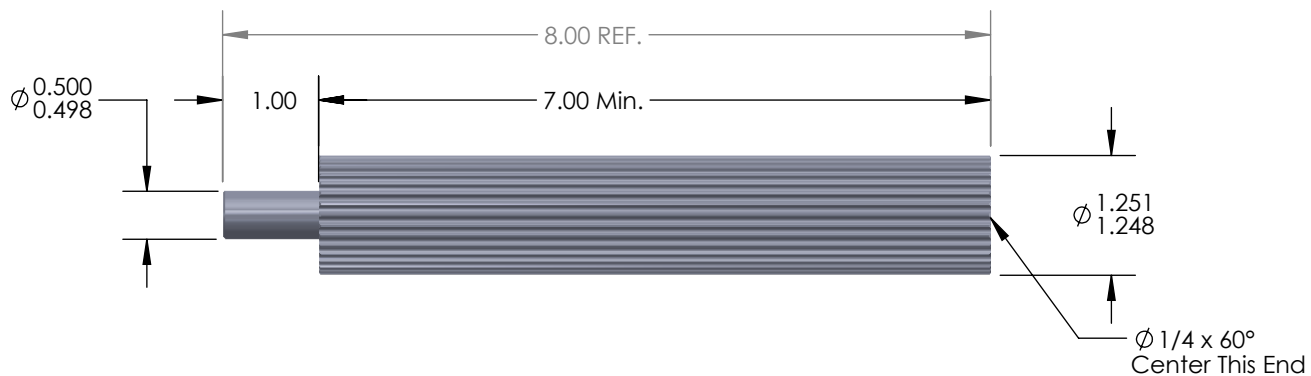
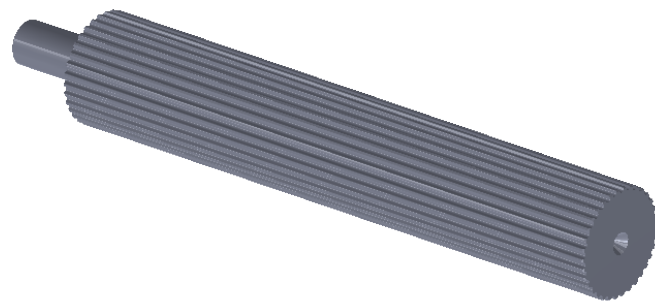
D


C

C

B

B



DO NOT SCALE DRAWING	Tooth Information:	UNLESS OTHERWISE SPECIFIED:	Serial # of Hob Used:	 Illinois Pulley & Gear, Inc. 611 Lunt Ave., Schaumburg, IL 60193						
Flanges:	3mm HTD 34 Teeth	DIMENSIONS ARE IN INCHES TOLERANCES: FRACTIONAL ± 0.015 ANGULAR: MACH $\pm 1^\circ$ BEND $\pm 2^\circ$ TWO PLACE DECIMAL ± 0.010 THREE PLACE DECIMAL ± 0.005 SURFACE FINISH: $\sqrt{63}$	Flanges Installed:		TITLE: 3mm HTD Aluminum Pulley Stock 34 Teeth					
PROPRIETARY AND CONFIDENTIAL THE INFORMATION CONTAINED IN THIS DRAWING IS THE SOLE PROPERTY OF ILLINOIS PULLEY & GEAR, INC. ANY REPRODUCTION IN PART OR AS A WHOLE WITHOUT THE WRITTEN PERMISSION OF ILLINOIS PULLEY & GEAR, INC. IS PROHIBITED.	Inspection Notes:	MATERIAL	Plating / Surface Treatment Performed:	<table border="1"> <tr> <td>SIZE</td> <td>DWG. NO.</td> <td>REV</td> </tr> <tr> <td>A</td> <td>34-3M-PS-7A</td> <td>01</td> </tr> </table>		SIZE	DWG. NO.	REV	A	34-3M-PS-7A
		SIZE	DWG. NO.		REV					
A	34-3M-PS-7A	01								
1 3/8" Rd. 6061 Aluminum	Sundries Installed:	FINISH	COMMENTS:	SCALE: 1:2 WEIGHT: SHEET 1 OF 1						
None - As Machined	1. Break all sharp corners.									

4

3

2

1

A

A