

4

3

2

1

D

D

C

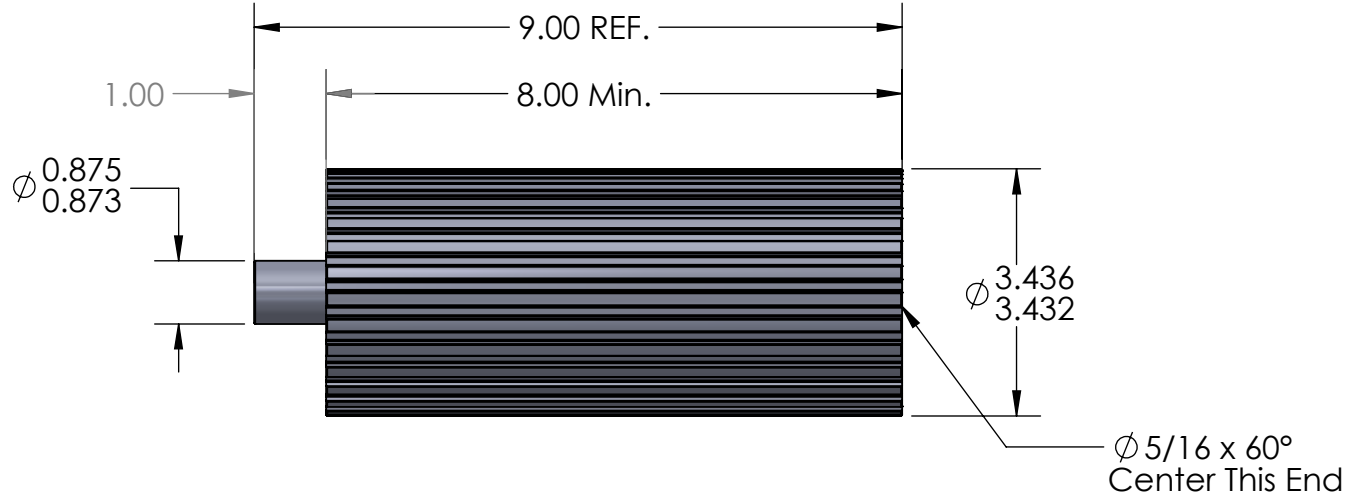
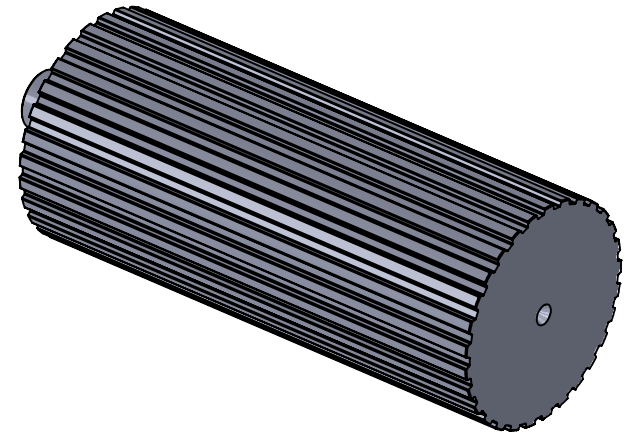
C

B

B

A

A



DO NOT SCALE DRAWING Flanges:	Tooth Information: L 29 Teeth	UNLESS OTHERWISE SPECIFIED: DIMENSIONS ARE IN INCHES TOLERANCES: FRACTIONAL ±0.015 ANGULAR: MACH ±1° BEND ±2° TWO PLACE DECIMAL ±0.010 THREE PLACE DECIMAL ±0.005 SURFACE FINISH: $\sqrt{63}$	Serial # of Hob Used:	Illinois Pulley & Gear, Inc. 611 Lunt Ave., Schaumburg, IL 60193		
	PROPRIETARY AND CONFIDENTIAL THE INFORMATION CONTAINED IN THIS DRAWING IS THE SOLE PROPERTY OF ILLINOIS PULLEY & GEAR, INC. ANY REPRODUCTION IN PART OR AS A WHOLE WITHOUT THE WRITTEN PERMISSION OF ILLINOIS PULLEY & GEAR, INC. IS PROHIBITED.		Inspection Notes:	MATERIAL 3 1/2" Rd. 6061 Aluminum	Flanges Installed:	TITLE: L Aluminum Pulley 29 Stock Teeth
FINISH None - As Machined		Plating / Surface Treatment Performed:		SIZE DWG. NO. REV A 29-L-PS-8A 01		
		Sundrys Installed:		COMMENTS: 1. Break all sharp corners.		
			SCALE: 3:8 WEIGHT: SHEET 1 OF 1			

4

3

2

1