

4

3

2

1

D

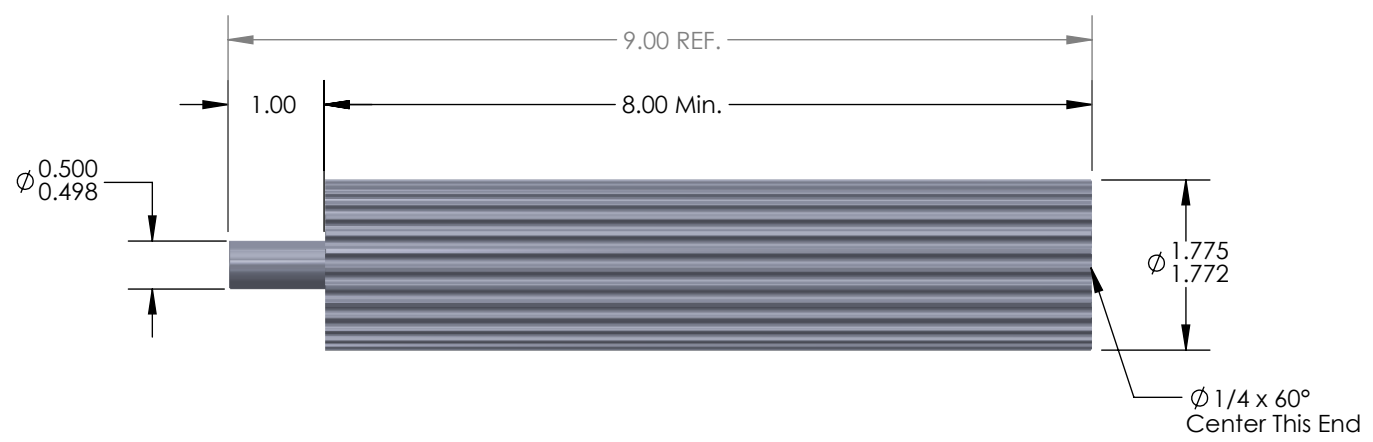
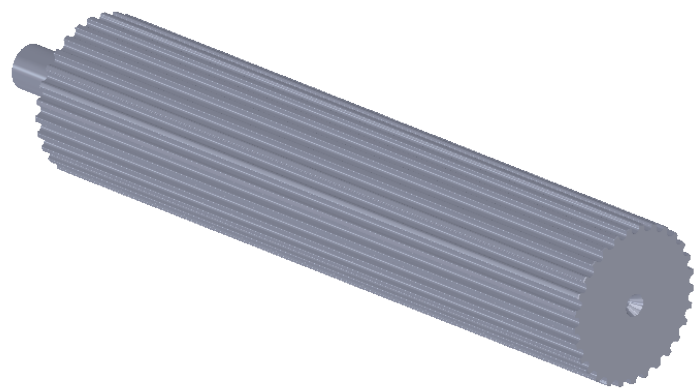
D

C

C

B

B



DO NOT SCALE DRAWING Flanges:	Tooth Information: 5mm PowerGrip GT 29 Teeth	UNLESS OTHERWISE SPECIFIED: DIMENSIONS ARE IN INCHES TOLERANCES: FRACTIONAL ±0.015 ANGULAR: MACH ±1° BEND ±2° TWO PLACE DECIMAL ±0.010 THREE PLACE DECIMAL ±0.005 SURFACE FINISH: $\sqrt{63}$	<u>Serial # of Hob Used:</u>	Illinois Pulley & Gear, Inc. 611 Lunt Ave., Schaumburg, IL 60193 TITLE: 5mm PowerGrip GT Aluminum Pulley Stock 29 Teeth
	Inspection Notes:		MATERIAL 1 7/8" Rd. 6061 Aluminum FINISH None - As Machined	
PROPRIETARY AND CONFIDENTIAL THE INFORMATION CONTAINED IN THIS DRAWING IS THE SOLE PROPERTY OF ILLINOIS PULLEY & GEAR, INC. ANY REPRODUCTION IN PART OR AS A WHOLE WITHOUT THE WRITTEN PERMISSION OF ILLINOIS PULLEY & GEAR, INC. IS PROHIBITED.				SCALE: 1:2 WEIGHT: SHEET 1 OF 1

4

3

2

1

A

A