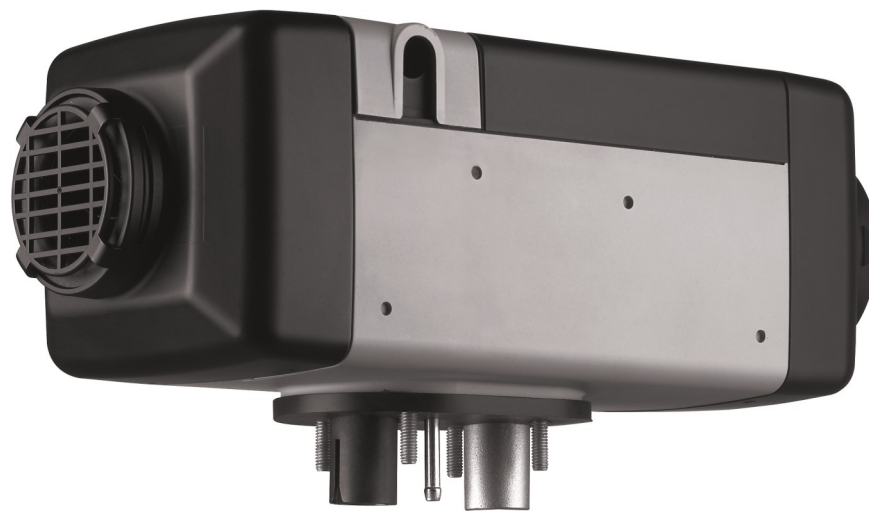


# Air Heating

## Air Top Series



Webasto air heating systems are the ultimate choice when it comes to heating your leisure vehicle's interiors efficiently and economically.

The light weight and compact air heaters are easy and quick to install and can be used even whilst driving ensuring that you and your passengers arrive at your destination in a pre-warmed vehicle.

They quickly heat up the interior to the temperature you require, quietly ensuring that you enjoy constant, cozy warmth on board, where ever you choose to rest.

The Air Top range of heaters are cost efficient as they have low power and fuel consumption and operate independently to heat up the interior without having to have the engine running.

### Advantages of Webasto Air Heaters:

- High comfort due to the very quiet operation and step-less power control
- Easy Installation in virtually all vehicles due to compact dimensions
- No engine idling
- Can be used whilst driving
- User-friendly operation
- Powerful with short heat up times
- Proven technology - Made in Germany
- Low fuel and power consumption
- Fuel supplied from motorhome's own tank
- Optional fuel tank available for caravans
- In-Built Diagnostic capability as standard on both controls



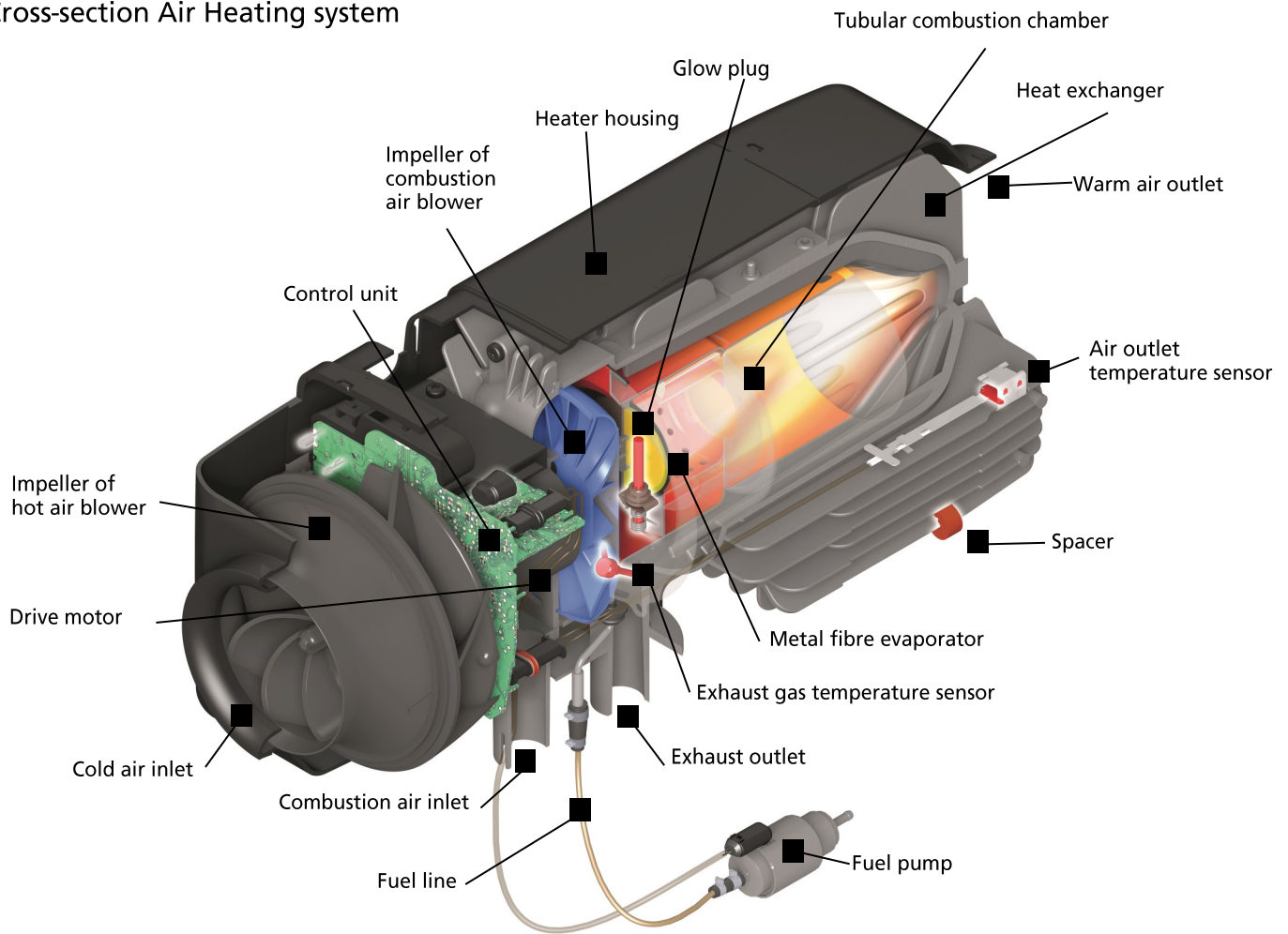
#### Standard Control

Simple turn the hand control dial to start the heater and warm up to set your desired temperature.



**Programmable Digital Multi Control**  
Digital controller with easy to read screen, programming knob and Timer function.

## Cross-section Air Heating system



## Technical Specifications

	Air Top 2000STC		Air Top EVO 40		Air Top EVO 55	
Voltage (V)	12	24	12	24	12	24
Fuel Type	Diesel		Diesel		Diesel	
Heat Output (kW) Partial Load - Full Load/Boost	0.9 - 2.0		1.5 - 3.5 / 4.0		1.5 - 5.0 / 5.5	
Fuel Consumption (L / hr) Partial Load - Full Load/Boost	0.12 - 0.24		0.18 - 0.43 / 0.49		0.18 - 0.61 / 0.67	
Power Consumption (W) Partial Load - Full Load/Boost	14 - 29		15 - 40 / 55		15 - 95 / 130	
Dimensions (LxWxH mm) Weight (kg)	311 x 120 x 121 2.6		423 x 148 x 162 5.9		423 x 148 x 162 5.9	